

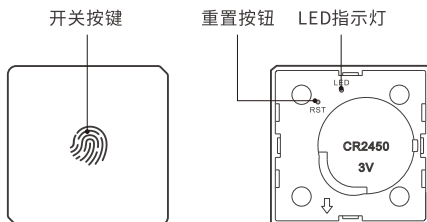


SNZB-01P

User manual V1.0



Zigbee Wireless Switch



SNZB-01P 是一款低功耗遥控无线开关, 可任意移动位置, 即贴即用, 还可通过添加场景联动设置控制其他设备。



低功耗



低电量消息推送



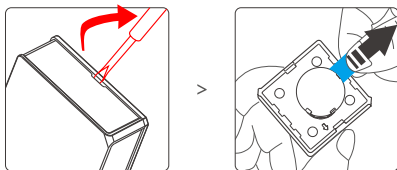
场景联动

1. 下载易微联App



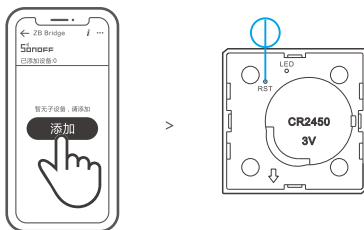
2. 添加 SONOFF Zigbee网关

3. 取出电池绝缘片



⚠ 设备分带电池和不带电池版本。

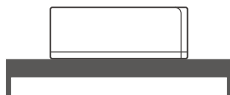
4. 添加子设备



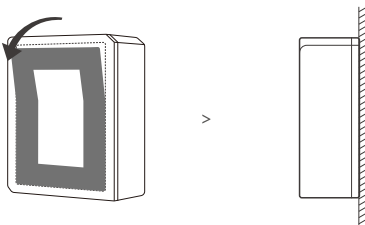
打开eWeLink App, 选择要连接的网关, 点击 "添加" 子设备, 然后长按子设备 "RST" 重置按钮 5秒直至LED指示灯呈慢闪状态, 子设备进入配对状态, 等待设备连接。

⚠ 如添加失败, 请将设备移近网关后再重新添加。

1. 直接放置桌面使用



2. 撕下3M胶保护膜, 粘贴在所需区域即可



⚠ 请勿安装在金属表面, 否则会影响无线通讯距离。

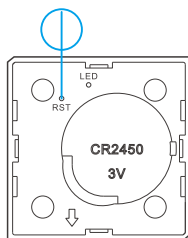
⚠ 设备重量<1Kg, 建议安装高度<2米。

在选定的设备安装位置, 短按设备的重置按键, 设备指示灯双闪, 表明该设备和Zigbee网络下的设备(路由设备或网关)处于有效通讯距离。

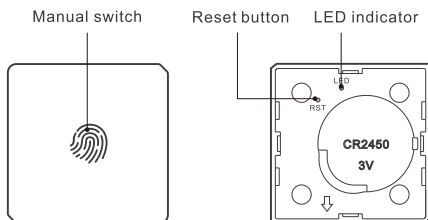
产品型号	SNZB-01P
电池型号	CR2450(3V)
无线连接	Zigbee 3.0
工作温度	0°C~40°C
工作湿度	10-90%RH(无冷凝)
外壳材料	PC V0
产品规格	43x43x16mm

用户可根据需要选择单击、双击或者长按让设备执行设置的指令。

长按子设备重置按钮5秒直到LED指示灯闪烁3下, 此时子设备已在网关中删除。



⚠用户还可在APP子设备界面中删除子设备。



SNZB-01P is a Zigbee low-energy wireless switch that allows you to move to any place. Peel and stick. Connect it with the Bridge and you can create a smart scene to trigger other devices.



Low-energy



Low battery notification



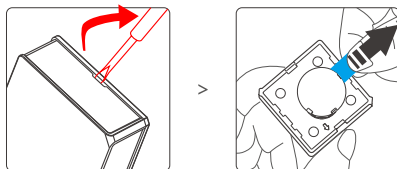
Smart scene

1. Download the eWeLink App



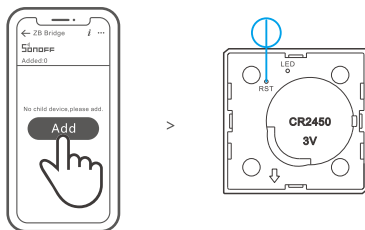
2. Pair SONOFF ZB Bridge to your eWeLink account

3. Pull out the battery insulation sheet



⚠ The device has the version with battery and without battery.

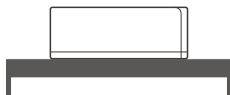
4. Add sub-devices



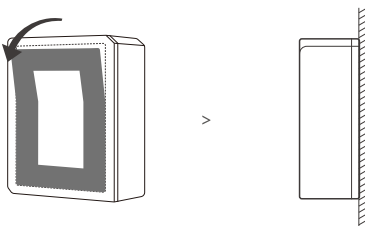
Access eWeLink App, select the Bridge that you want to connect, and tap "Add" to add a sub-device. Then long press "RST" reset button on the device for 5s until the LED indicator flashes slowly, which means the device has entered the pairing mode, and be patient until pairing completes.

⚠ If the addition failed, move the sub-device closer to the Bridge and try again.

1. Placed on the desktop for use.



2. Tear off the protective film of the 3M adhesive and stick the device on the desired area.



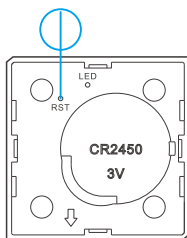
- ⚠ Do not install on the metal surface, otherwise it will affect the wireless communication distance.
- ⚠ The device weight is less than 1 kg. The installation height of less than 2 m is recommended.

Install the device in the desired place, then press the "Reset" button on the device. The LED indicator flashes twice means the device and the device under the same ZigBee network (the router device or hub) are in the effective communication distance.

Model	SNZB-01P
Battery model	CR2450(3V)
Wireless connection	Zigbee 3.0
Working temperature	0°C~40°C
Working humidity	10-90%RH(non-condensing)
Material	PC V0
Dimension	43x43x16mm

You can select to press once, press twice or long press the wireless switch to control the connected device for various functions.

Long press the reset button on the sub-device for 5s until the LED indicator flashes three times. In this case, the sub-device is deleted from the Bridge successfully.



⚠ Users can delete sub-devices directly from the sub-device page on APP.

FCC Warning

Changes or modifications not expressly approved by the party responsible for compliance could avoid the user's authority to operate the equipment.

This device complies with part 15 of the FCC Rules. Operation is subject to the following two conditions: (1) This device may not cause harmful interference, and (2) this device must accept any interference received, including interference that may cause undesired operation.

FCC Radiation Exposure Statement:

This equipment complies with FCC radiation exposure limits set forth for an uncontrolled environment. This transmitter must not be co-located or operating in conjunction with any other antenna or transmitter.

This equipment should be installed and operated with minimum distance 20cm between the radiator & your body.

Note:

This equipment has been tested and found to comply with the limits for a Class B digital device, pursuant to part 15 of the FCC Rules. These limits are designed to provide reasonable protection against harmful interference in a residential installation. This equipment generates, uses and can radiate radio frequency energy and, if not installed and used in accordance with the instructions, may cause harmful interference to radio communications. However, there is no guarantee that interference will not occur in a particular installation. If this equipment does cause harmful interference to radio or television reception, which can be determined by turning the equipment off and on, the user is encouraged to try to correct the interference by one or more of the following measures:

- Reorient or relocate the receiving antenna.
- Increase the separation between the equipment and receiver.
- Connect the equipment into an outlet on a circuit different from that to which the receiver is connected.
- Consult the dealer or an experienced radio/TV technician for help.

Hereby, Shenzhen Sonoff Technologies Co., Ltd. declares that the radio equipment type SNZB-01P is in compliance with Directive 2014/53/EU. The full text of the EU declaration of conformity is available at the following internet address:

<https://www.sonoff.tech/usermanuals>



Shenzhen Sonoff Technologies Co., Ltd.

1001, BLDG8, Lianhua Industrial Park, shenzhen, GD, China
ZIP code: 518000

Website: [sonoff.tech](https://www.sonoff.tech)

MADE IN CHINA

