

VDLive **10** USB

Versatile 2.4G Wireless USB Microphone

**User Manual**

## Foreword

Thanks for purchasing Comica VDLive10 USB

## Main Features

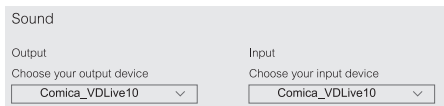
- Dual-channel 2.4G Wireless USB Microphone, Global Free Frequency
- Wide Compatibility for Phone, Computer, Camera, etc.
- Innovative Switchable Simplex/Duplex Communication&Monitoring
- Intelligent Noise Reduction, Working Distance Up to 30m (Open Area)
- 3.5mm Analog and USB Digital Two Output Modes
- Support Stereo Output for all Compatible Devices
- Rechargeable Storage Case
- IPS Screen for Intuitive Operation and Usage
- Mono/Stereo Switch, Volume Adjustment and Mute Functions,etc.
- Internal and External MIC Two Input Modes
- Low Latency<20ms, Stable Transmission

## Notice

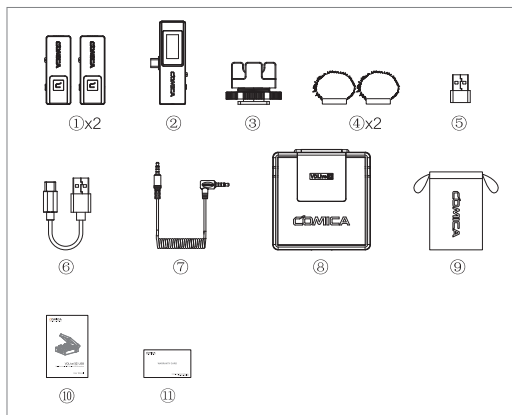
- ⚠ Some cameras are not compatible with 3.5mm TRRS-TRRS audio cable, it's necessary to purchase 3.5mm TRS-TRS audio cable by yourself
- ⚠ Don't block the antenna position to avoid any poor signal generated when using
- ⚠ Please power the transmitter and receiver off when charging

## Tips

1. VDLive10 USB is universal for USB and 3.5mm interface devices.  
When used in smartphone, the system will compulsorily choose VDLive10 USB
2. When used in computer, please follow the steps below:
  - ① Insert VDLive10 USB into the computer
  - ② Click sound setting and set the “Comica\_VDLive10” as the input and output device



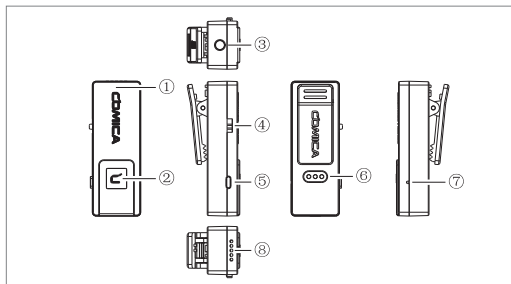
## Packing List



- ① Transmitter(TX)
- ② Receiver (RX)
- ③ Cold Shoe Mount
- ④ Wind Muff
- ⑤ USB C-USB A Adapter
- ⑥ Charging Cable
- ⑦ 3.5mm TRRS-TRRS Audio Cable
- ⑧ Charging Case
- ⑨ Carry Case
- ⑩ User Manual
- ⑪ Warranty Card

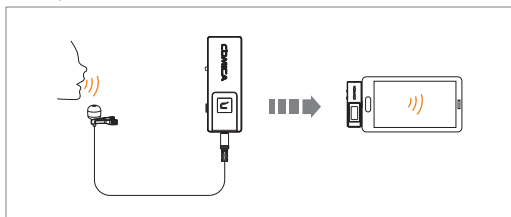
# Components and Instruction

## Transmitter(TX):



- ① Built-in Antenna
- ② Working Status Indicator Light (Orange light on: paired; Orange light flashing: unpaired; Red light on: MIC mute)
- ③ 3.5mm TRS External Mic Port (Simplex Mode)  
Monitoring Port (Duplex Mode)
- ④ S ↑ / OFF / D ↑ ↓ Switch Button ( S ↑ : Simplex mode;  
OFF: Power off; D ↑ ↓ : Duplex mode)
- ⑤ Volume / Mute Adjustment Button (Short press to adjust 4-level  
volume; long press to mute)
- ⑥ Charging Metal Contact
- ⑦ Reset Hole
- ⑧ Internal Mic

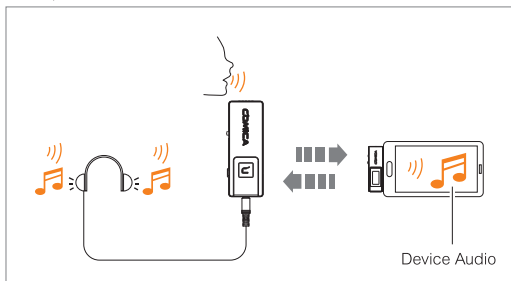
Simplex mode:



The transmitter audio is transmitted to the receiver unidirectionally, audio can only be monitored in receiver

👉 Simplex mode monitoring: audio of transmitter

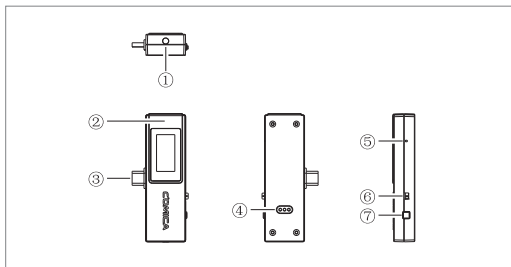
Duplex mode:



Two way transmission of audio between transmitter and receiver, audio can be monitored in transmitter and receiver

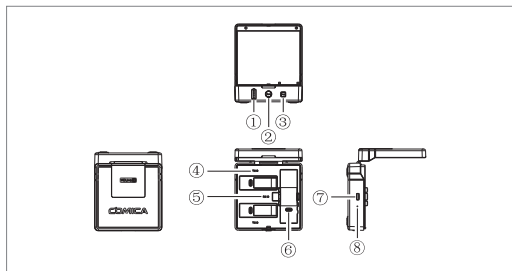
👉 Duplex mode monitoring: audio of transmitter + audio of the platform on the device connected by the receiver

## Receiver (RX)



- ① 3.5mm Audio Output Port ( 3.5mm analog output mode)  
Monitoring Port ( USB digital output mode)
- ② Built-in Antenna
- ③ USB-C Plug
- ④ Charging Metal Contact
- ⑤ Reset Hole
- ⑥ ON/OFF Switch Button (ON: Power on; OFF: Power off )
- ⑦ M/S Switch Button (M: mono mode; S: stereo mode; Short press to switch)

## Charging Case



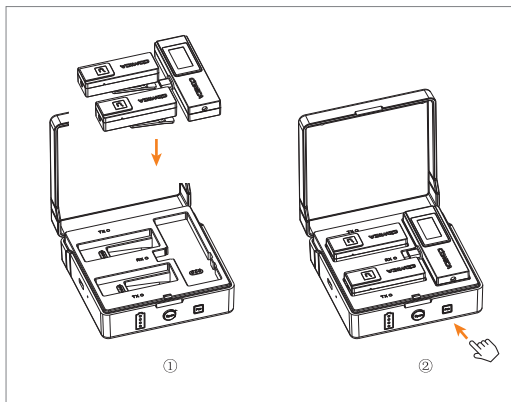
- ① Power Indicator Light (There are four power indicator lights, one of which represents 25% of the power)
- ② Switch Button (Press it to open the charging case)
- ③ Pairing Button (Long press to pair)
- ④ Transmitter Charging Status Indicator Light (Red light on: charging; Blue light on: fully charged)
- ⑤ Receiver Charging Status Indicator Light (Red light on: charging; Blue light on: fully charged)
- ⑥ Charging Metal Contact
- ⑦ USB-C Charging Port
- ⑧ Reset Hole



Please power the transmitter and receiver off when charging

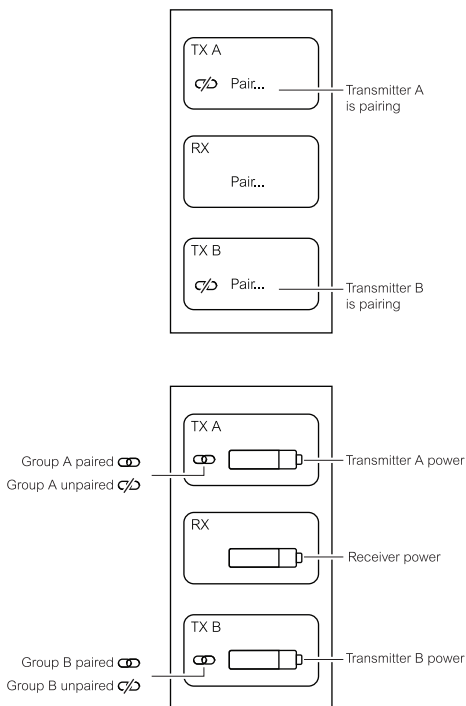


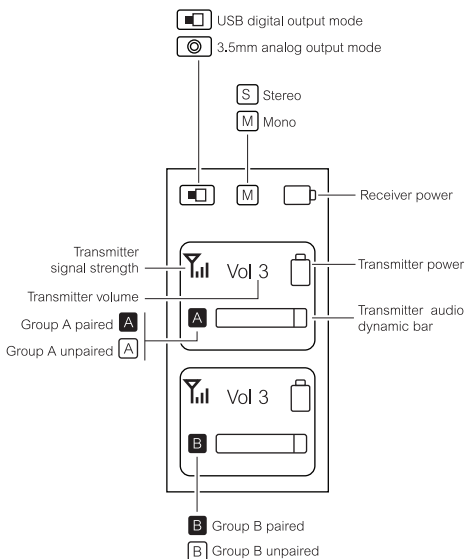
## Pairing Method



- ① Put the transmitter and receiver into the charging case
- ② Long press the pairing button to pair

## Screen Display Instruction of Receiver (RX)

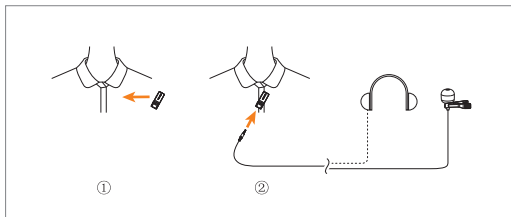




👉 Group A is left channel and group B is right channel

# Installation

## Transmitter(TX)



### 1.In Simplex Mode

- ① Switch the S ↑ /OFF/D ↑ ↓ switch button to S ↑  
(Simplex mode)
- ② You can choose to use internal mic or external mic to satisfy your recording demands

👉 When using an external mic, the internal mic is automatically turned off

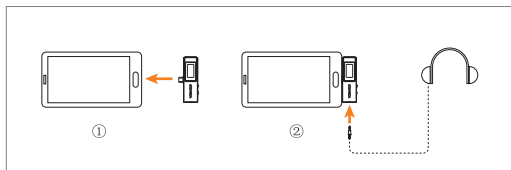
### 2.In Duplex Mode

- ① Switch the S ↑ /OFF/D ↑ ↓ switch button to D ↑ ↓  
(Duplex mode)
- ② Install the transmitter on the collar so that the internal mic points to the sound source
- ③ Insert the headphone into the monitoring port to monitor

## Receiver (RX)

### 1. USB Digital Output Mode

#### ① USB-C device

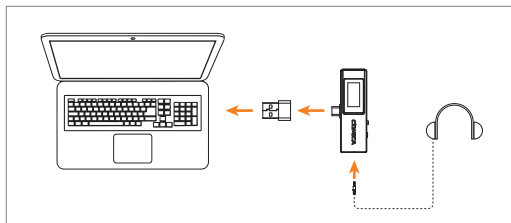


.Insert the receiver to the USB-C device

.You can choose to whether insert the headphone to monitor or not based on your needs

---

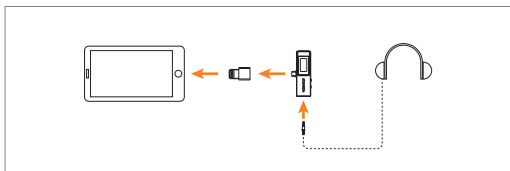
#### ② USB-A device



.Connect the receiver and USB-A device via the USB C-USB A adapter

.You can choose to whether insert the headphone to monitor or not based on your needs

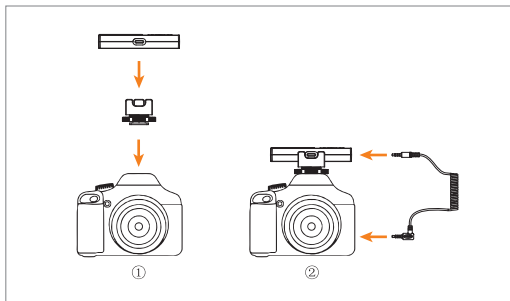
### ③ Lightning device



- . Connect the receiver and Lightning device via the USB C -Lightning adapter(Please purchase USB C-Lightning adapter by yourself)
- . You can choose to whether insert the headphone to monitor or not based on your needs

## 2. 3.5mm Analog Output Mode

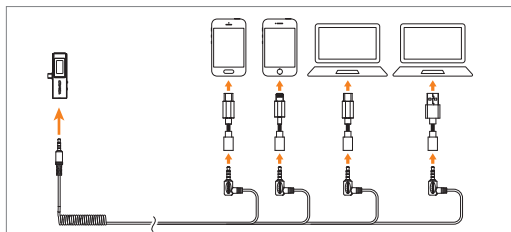
### ① 3.5mm TRS camera



- . Mount the receiver to the camera through the cold shoe mount
- . Connect the receiver and camera via 3.5mm TRRS-TRRS audio cable or 3.5mm TRS-TRS audio cable (Please purchase 3.5mm TRS-TRS audio cable by yourself)

☞ Some cameras are not compatible with 3.5mm TRRS-TRRS audio cable, it's necessary to purchase 3.5mm TRS-TRS audio cable by yourself

## ② USB devices



- . Work with USB devices via corresponding adapter  
(Please purchase adapter by yourself)



# Specification

Wireless Type	2.4GHz
Antenna	Ceramic Antenna
Polar Pattern	Omnidirectional
Frequency Response	80Hz ~ 20kHz
S/N	>60dB
SPL	Internal Mic: 120dB External Mic: 110dB
Dynamic Range	Internal Mic: 86dB External Mic: 86dB
Sound Delay	<20ms
Sensitivity	Internal Mic: -26dBFS±1dB External Mic: -32dB±2dB
Interface	TX: 3.5mm RX: USB-C & 3.5mm Charging Case: USB-C
Battery	TX:90mAh 3.7V RX:90mAh 3.7V Charging Case: 1000mAh 3.7V
Charging Time	TX: 2 Hours RX: 2 Hours Charging Case: 4 Hours
Standby Time	TX: 4 Hours RX: 4 Hours Charging Case:3 times for two transmitters and one receiver charged simultaneously
Net Weight	TX:14g RX: 20g Charging Case: 167g
Dimension	TX: 20x53x21 mm RX: 33x76x13 mm Charging Case: 96x99x37 mm
Operating Temperature	0℃ ~ 50℃
Storage Temperature	-20℃ ~ 60℃

**FCC Statement**

This device complies with part 15 of the FCC rules. Operation is subject to the following two conditions: (1) this device may not cause harmful interference, and (2) this device must accept any interference received, including interference that may cause undesired operation.

Changes or modifications not expressly approved by the party responsible for compliance could void the user's authority to operate the equipment.

NOTE: This equipment has been tested and found to comply with the limits for a Class B digital device, pursuant to part 15 of the FCC Rules. These limits are designed to provide reasonable protection against harmful interference in a residential installation. This equipment generates uses and can radiate radio frequency energy and, if not installed and used in accordance with the instructions, may cause harmful interference to radio communications. However, there is no guarantee that interference will not occur in a particular installation. If this equipment does cause harmful interference to radio or television reception, which can be determined by turning the equipment off and on, the user is encouraged to try to correct the interference by one or more of the following measures:

- Reorient or relocate the receiving antenna.
- Increase the separation between the equipment and receiver.
- Connect the equipment into an outlet on a circuit different from that to which the receiver is connected.
- Consult the dealer or an experienced radio/TV technician for help.

The device has been evaluated to meet general RF exposure requirement. The device can be used in portable exposure condition without restriction.

#### ISED Statement

- English: This device complies with Industry Canada license - exempt RSS standard(s). Operation is subject to the following two conditions: (1) This device may not cause interference, and (2) This device must accept any interference, including interference that may cause undesired operation of the device.

The digital apparatus complies with Canadian CAN ICES - 3 (B)/NMB - 3(B).

- French: Le présent appareil est conforme aux CNR d'Industrie Canada applicables aux appareils radio exempts de licence. L'exploitation est autorisée aux deux conditions suivantes: (1) l'appareil ne doit pas produire de brouillage, et (2) l'utilisateur de l'appareil doit accepter tout brouillage radioélectrique subi, même si le brouillage est susceptible d'en compromettre le fonctionnement.

l'appareil numérique du CIEM conforme canadien peut - 3 (b) / NMB - 3 (b).

This device meets the exemption from the routine evaluation limits in section 2.5 of RSS 102 and compliance with RSS 102 RF exposure, users can obtain Canadian information on RF exposure and compliance.

cet appareil est conforme à l'exemption des limites d'évaluation courante dans la section 2.5 du CNR - 102 et conformité avec RSS 102 de l'exposition aux RF, les utilisateurs peuvent obtenir des données canadiennes sur l'exposition aux champs RF et la conformité.