

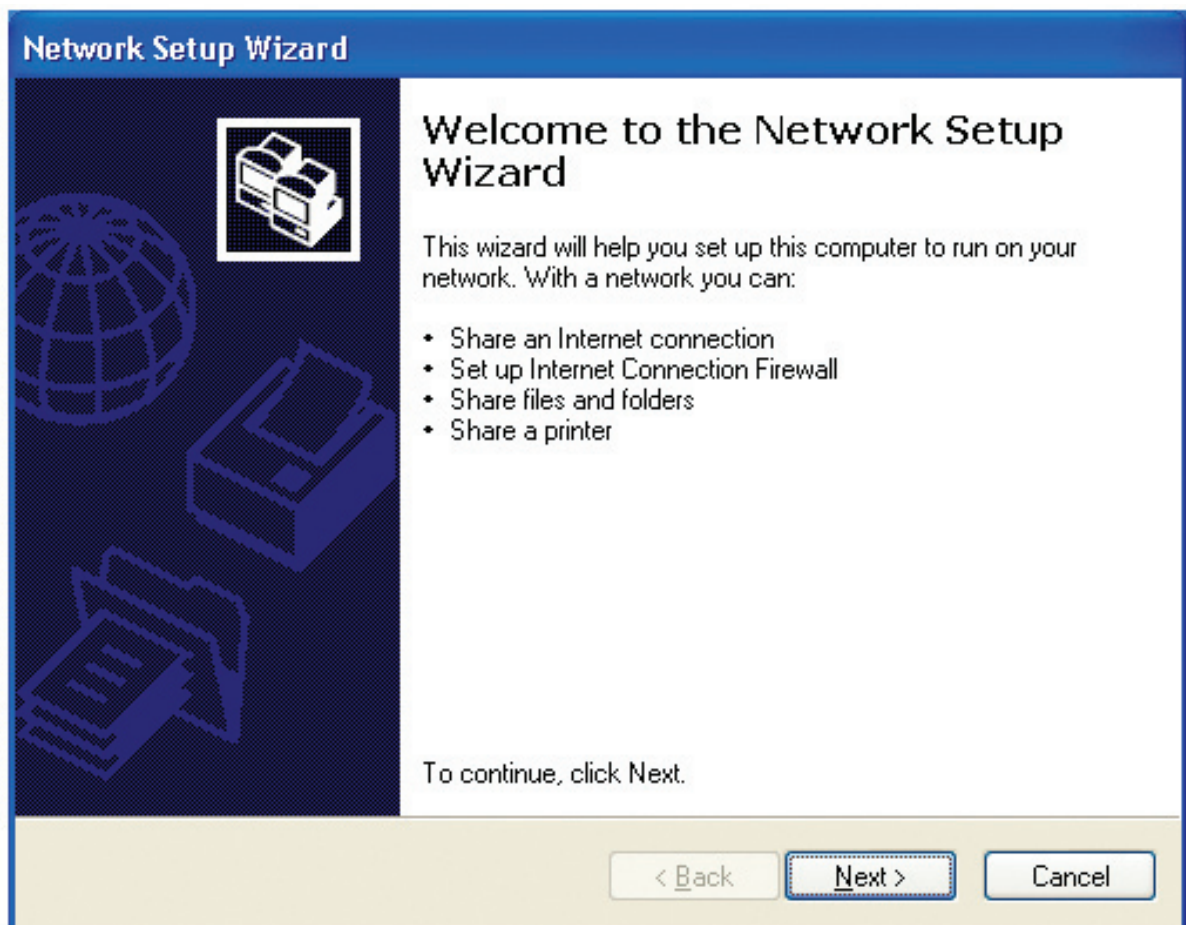
Networking Basics

Using the Network Setup Wizard in Windows XP

In this section you will learn how to establish a network at home or work, using **Microsoft Windows XP**.

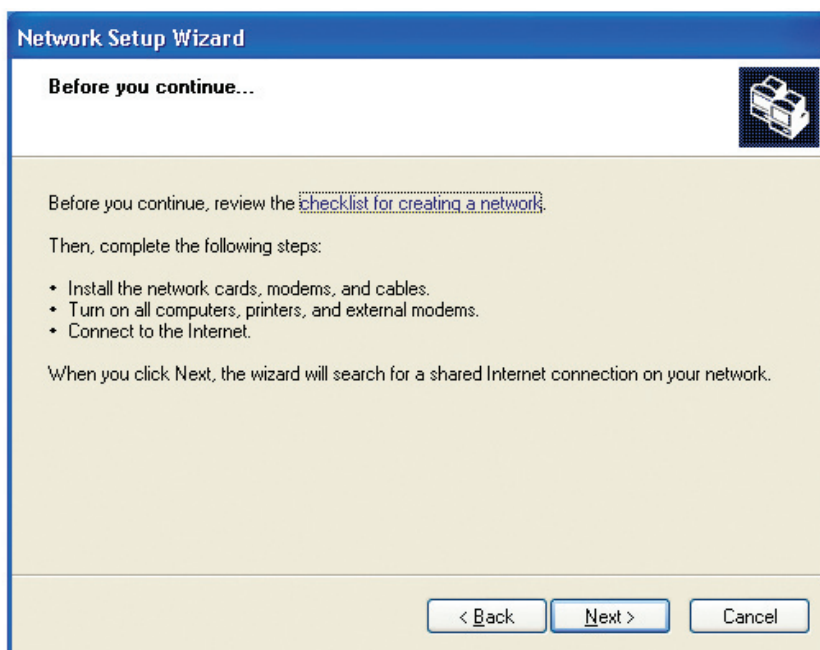
Note: Please refer to websites such as <http://www.homenethelp.com> and <http://www.microsoft.com/windows2000> for information about networking computers using Windows 2000,/Me/98SE.

Go to **Start>Control Panel>Network Connections**
Select **Set up a home or small office network**



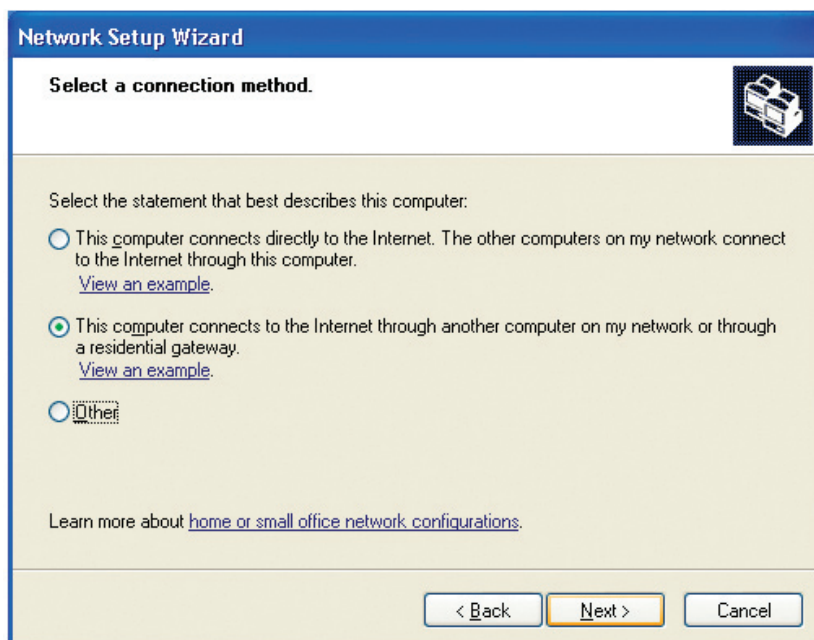
When this screen appears, click **Next**.

Please follow all the instructions in this window:



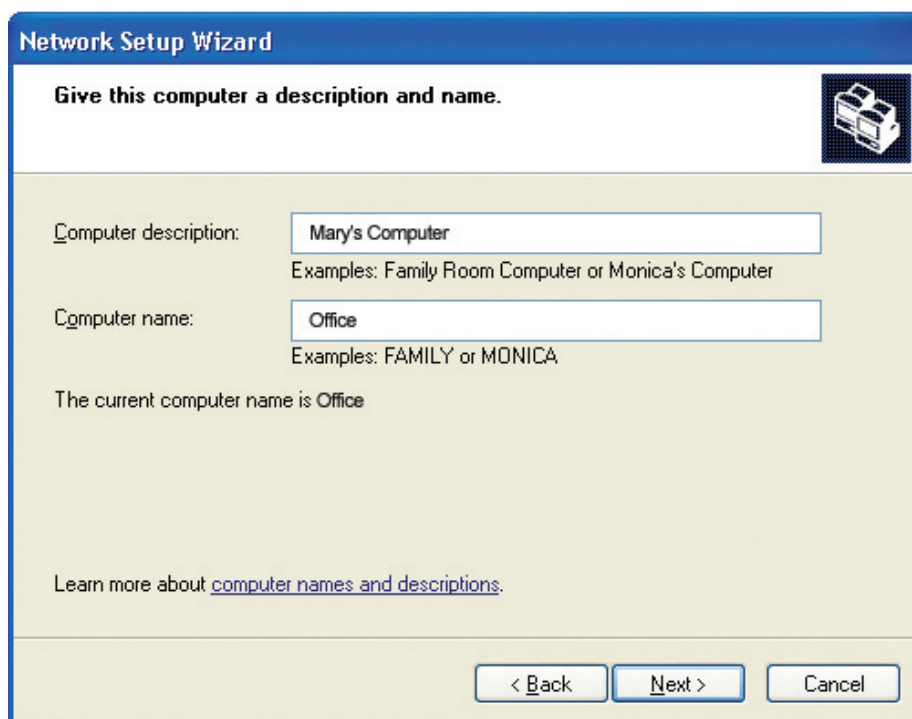
Click **Next**.

In the following window, select the best description of your computer. If your computer connects to the Internet through a router, select the second option as shown.



Click **Next**.

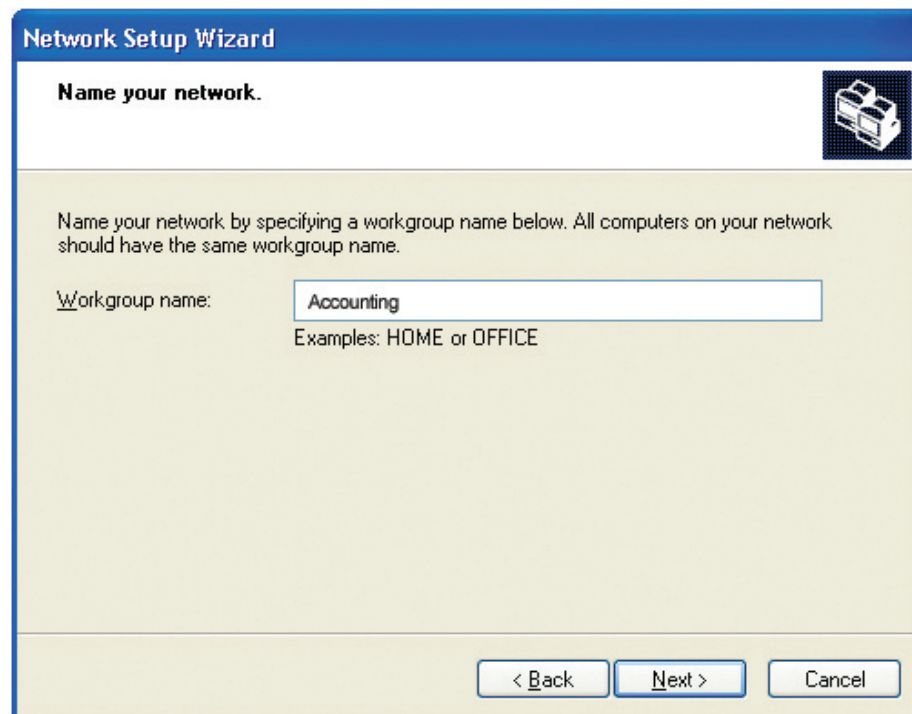
Enter a **Computer description** and a **Computer name** (optional.)



The image shows a screenshot of the 'Network Setup Wizard' dialog box. The title bar is blue with the text 'Network Setup Wizard'. The main area has a light beige background. At the top, it says 'Give this computer a description and name.' with a small icon of a computer. Below this, there are two text input fields. The first is labeled 'Computer description:' and contains the text 'Mary's Computer'. Below it, it says 'Examples: Family Room Computer or Monica's Computer'. The second is labeled 'Computer name:' and contains the text 'Office'. Below it, it says 'Examples: FAMILY or MONICA'. Underneath these fields, it says 'The current computer name is Office'. At the bottom, there is a link that says 'Learn more about [computer names and descriptions.](#)'. At the very bottom, there are three buttons: '< Back', 'Next >', and 'Cancel'.

Click **Next**.

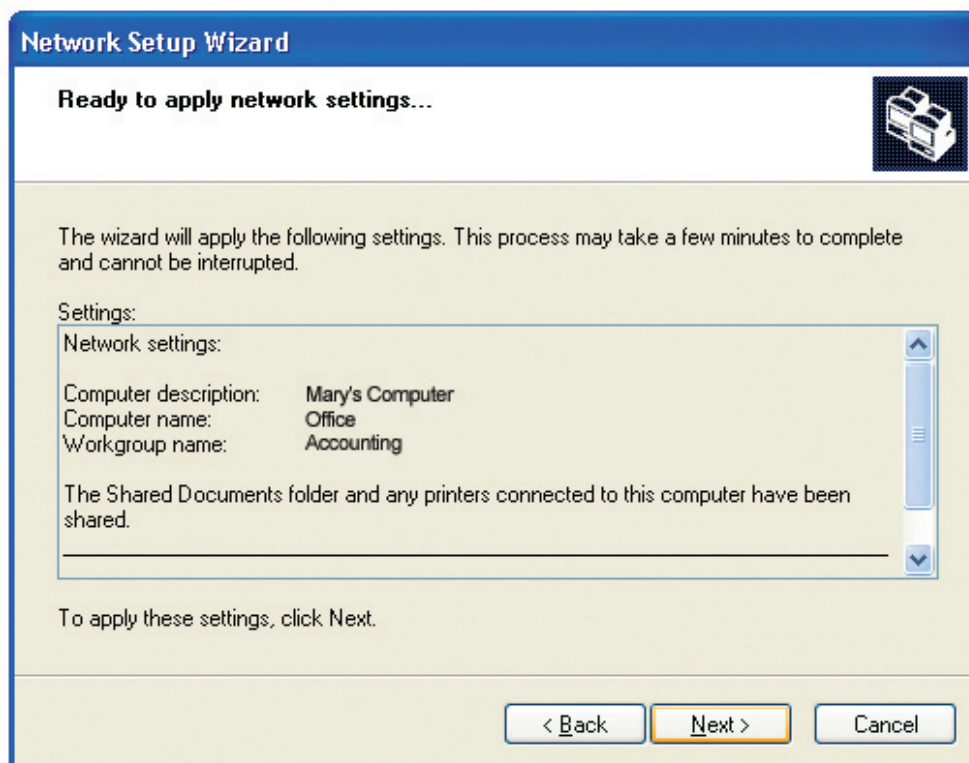
Enter a **Workgroup** name. All computers on your network should have the same **Workgroup name**.



The image shows a screenshot of the 'Network Setup Wizard' dialog box. The title bar is blue with the text 'Network Setup Wizard'. The main area has a light beige background. At the top, it says 'Name your network.' with a small icon of a computer. Below this, it says 'Name your network by specifying a workgroup name below. All computers on your network should have the same workgroup name.' Below this text, there is a text input field labeled 'Workgroup name:' which contains the text 'Accounting'. Below the field, it says 'Examples: HOME or OFFICE'. At the bottom, there are three buttons: '< Back', 'Next >', and 'Cancel'.

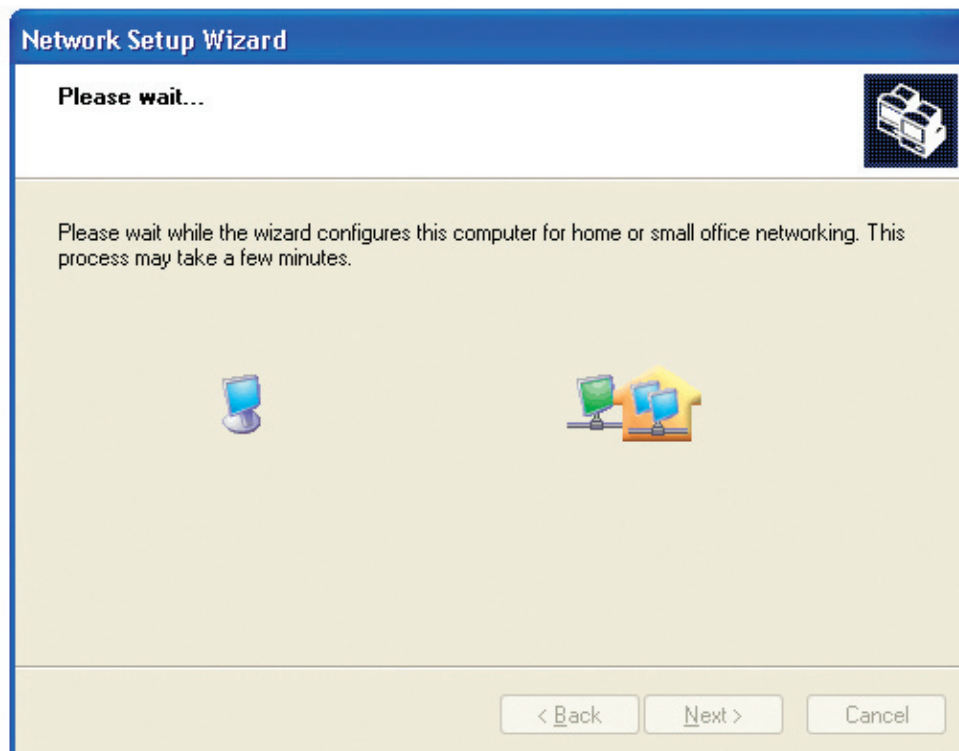
Click **Next**.

Please wait while the **Network Setup Wizard** applies the changes.

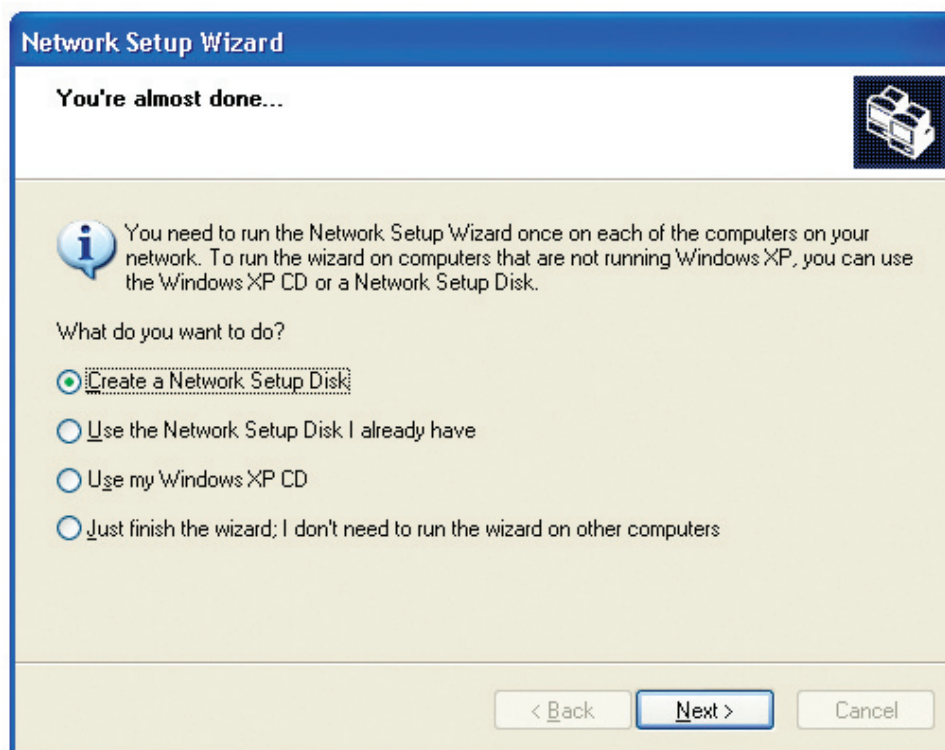


When the changes are complete, click **Next**.

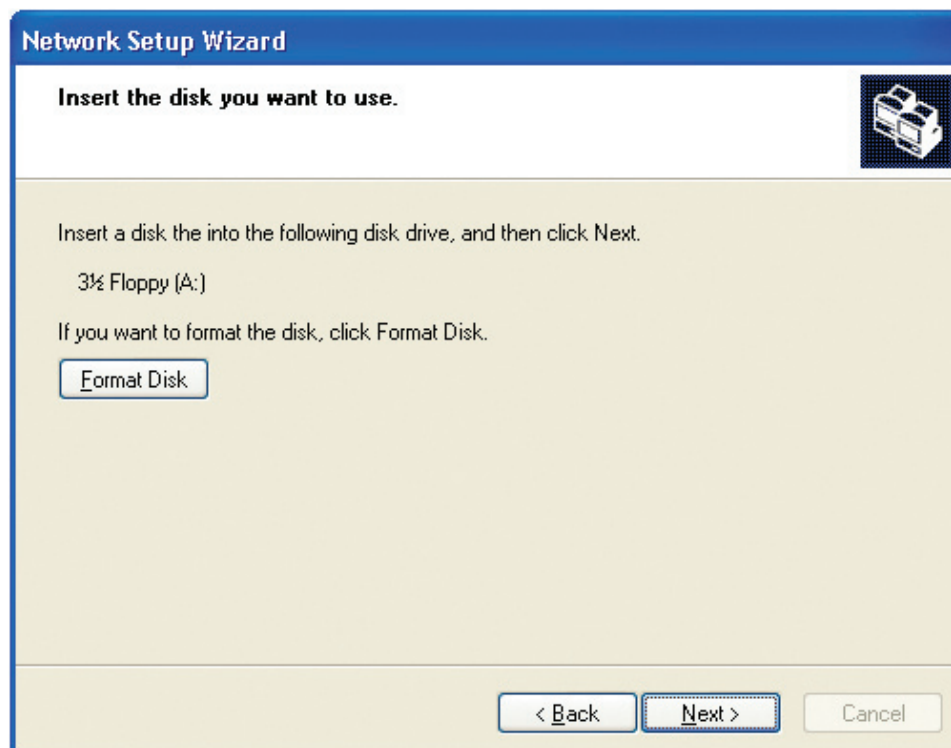
Please wait while the **Network Setup Wizard** configures the computer. This may take a few minutes.



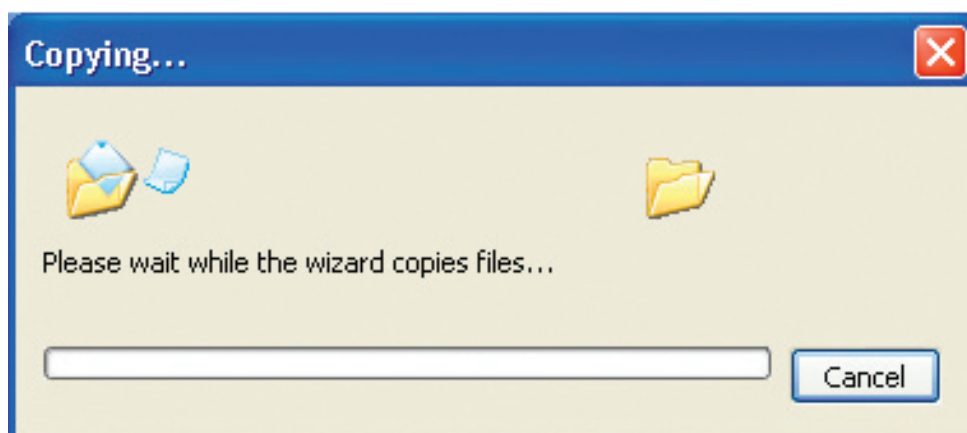
In the window below, select the option that fits your needs. In this example, **Create a Network Setup Disk** has been selected. You will run this disk on each of the computers on your network. Click **Next**.



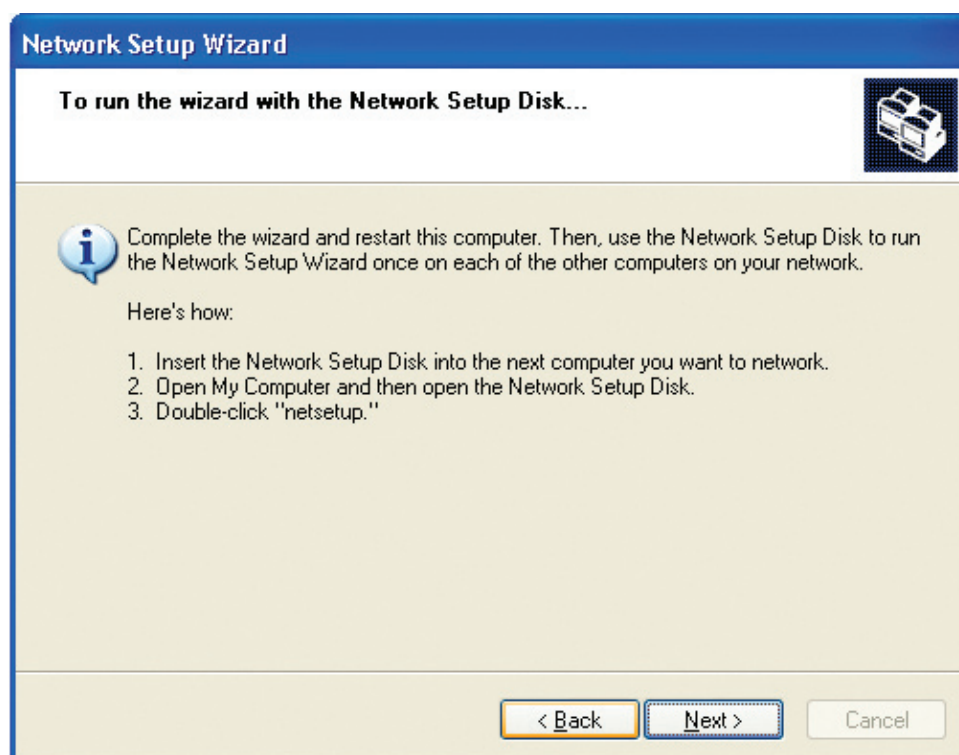
Insert a disk into the Floppy Disk Drive, in this case drive **A**.



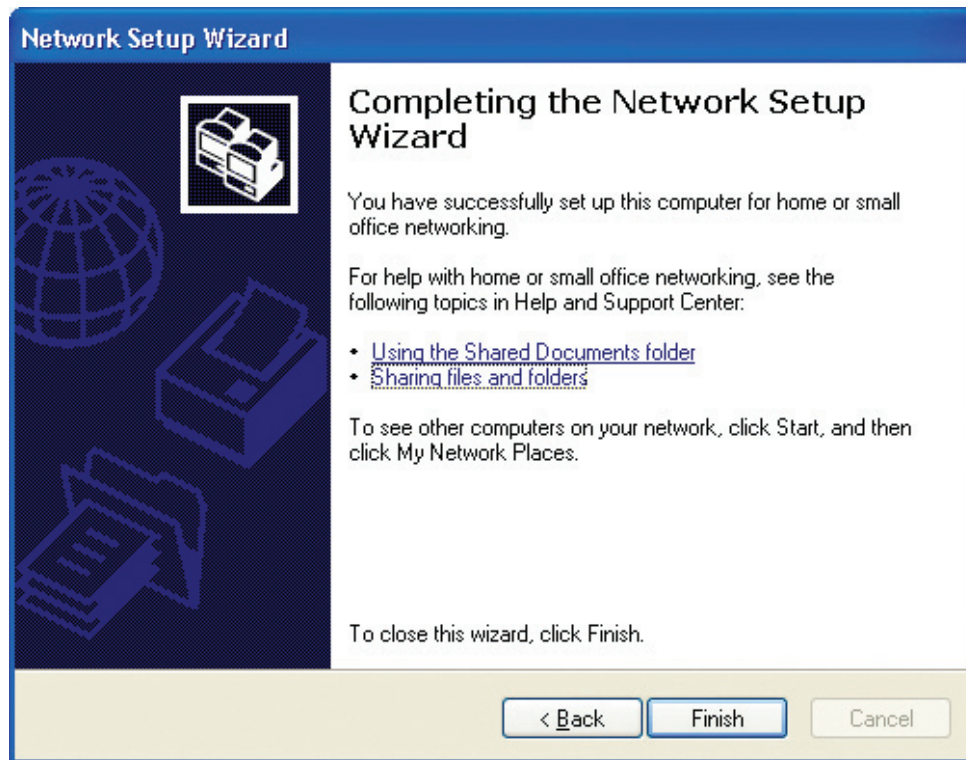
Click **Next**.



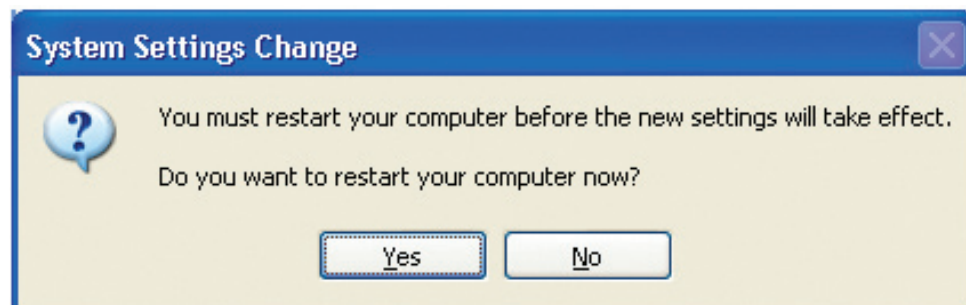
Please read the information under **Here's how** in the screen below. After you complete the **Network Setup Wizard** you will use the **Network Setup Disk** to run the **Network Setup Wizard** once on each of the computers on your network. Click **Next**.



Please read the information on this screen, then click **Finish** to complete the **Network Setup Wizard**.

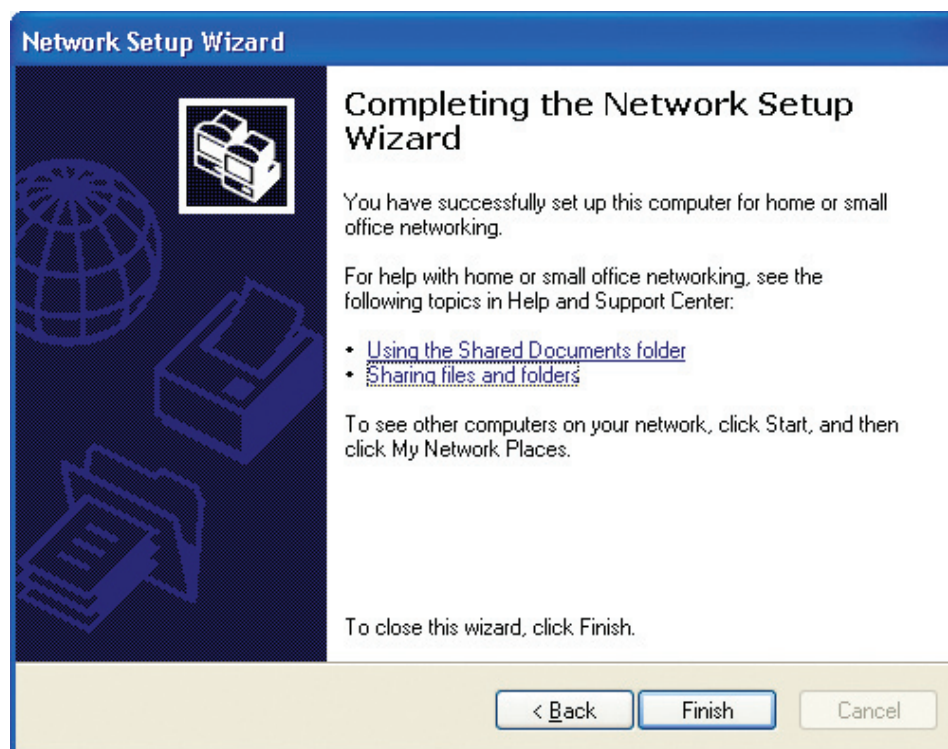


The new settings will take effect when you restart the computer. Click **Yes** to restart the computer.

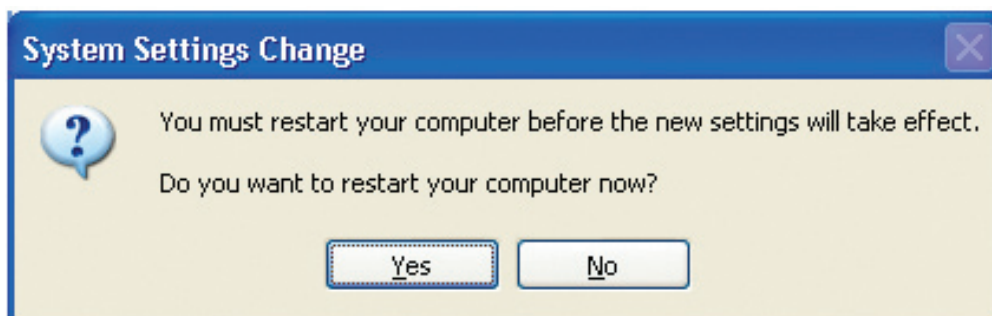


You have completed configuring this computer. Next, you will need to run the **Network Setup Disk** on all the other computers on your network. After running the **Network Setup Disk** on all your computers, your new wireless network will be ready to use.

Please read the information on this screen, then click **Finish** to complete the **Network Setup Wizard**.



The new settings will take effect when you restart the computer. Click **Yes** to restart the computer.



You have completed configuring this computer. Next, you will need to run the **Network Setup Disk** on all the other computers on your network. After running the **Network Setup Disk** on all your computers, your new wireless network will be ready to use.

Naming your Computer

To name your computer using **Windows XP**, please follow these directions:

Click **Start** (in the lower left corner of the screen).

Right-click on **My Computer**.

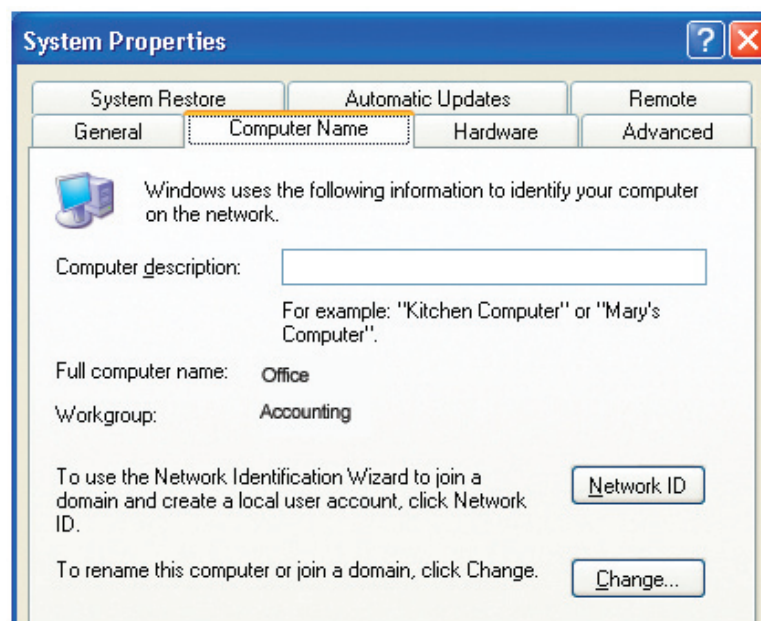
Select **Properties**.



Select the **Computer Name Tab** in the System Properties window.

You may enter a **Computer Description** if you wish; this field is

To rename the computer and join a domain, click **Change**.



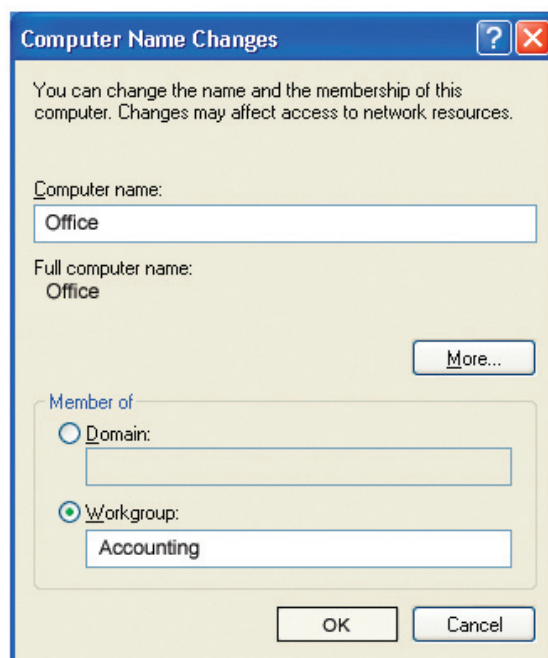
Naming Your Computer

In this window, enter the **Computer name**.

Select **Workgroup** and enter the name of the **Workgroup**.

All computers on your network must have the same **Workgroup** name.

Click **OK**.



Checking the IP Address in Windows XP

All wireless adapter-equipped computers in your network must be in the same IP address range (see **Getting Started** in this manual for a definition of IP address range.) To check on the IP address of an adapter, please do the following:

Right-click on the **Local Area Connection icon** in the task bar.

Click on **Status**.

