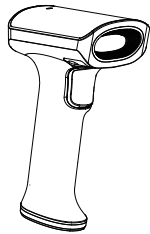


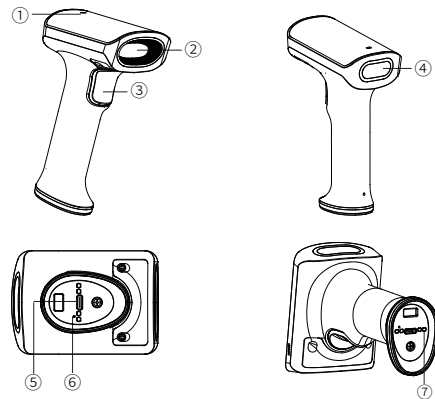
# Handheld Wireless Barcode Scanner

HN 3378SR-000R



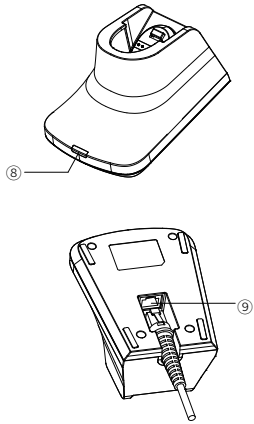
## Instruction Manual

### Appearance



- ① Sound Hole
- ② Scan Window
- ③ Scan Button
- ④ Indicator
- ⑤ Type-C Cable Interface
- ⑥ Power off Button
- ⑦ Charging contacts (It is used with the communication charging base)

### Communication Charging Base



- ⑧ Indicator
- ⑨ RJ45 Cable Interface

### LED Indicator

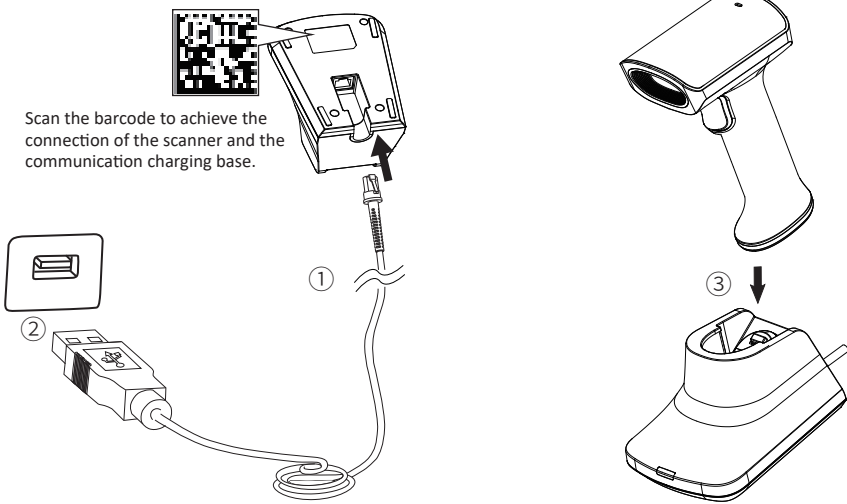
LED Indicator	
Color	Description
Red light always on	Charging
Red light off	Charging completed
Red light flash rapidly	Low power
Green light flash slowly	Bluetooth is not connected
Green light always on	Bluetooth is connected
Red & yellow light flash by turns	Charging and BT is not connected
Yellow light always on	Charging and BT is connected

### Communication Charging Base

Color	Description
Green light always on	Charging
Blue light always on	Bluetooth is connected
Cyan light always on	Charging and BT is connected

### How to Use the Communication Charging Base

- 1) Connect one end of the cable(RJ45) to the charging base.
- 2) Connect the other end of the cable to the HOST.
- 3) Put the scanner into the charging base.



### Power on/off and Restart

- **Power on:**
- 1.After it is connected to the host, it will be automatically power on.
- 2.When it is not connected to the USB cable, you can press and hold the button to power on.
- **Power off:**
- 1.Press and hold for 15s to power off.
- 2.It will be automatically powered off without any touch after 15mins.
- **Restart:**
- If the scanner crashes or does not respond, you can insert the clip into the switch key in the bottom, then press the scanning button to restart the scanner.

### Maintenance

- The reading window must be kept clean.
- Avoid hard and rough objects to scratch the reading window.
- Remove the stains from window with a brush.
- Please use a soft cloth to clean the window, such as glasses cloth.
- Do not spray any liquid on the window.
- Do not use any cleaner other than cleaning water.

### Buzzer

Status	Beeping times
Power on	3 times
Scan Successfully	1

### Restore Factory Deafult

Scan the barcode to restore all settings to the factory default state.



Note: Please use the "factory reset" function carefully. After reading this barcode, the current parameter settings will be lost and replaced with the factory default values.

Interface Settings

The scanner can communicate with the host by RS-232 serial port or USB port. The user can switch to the corresponding interface by replacing the data line and scanning the corresponding barcode below.

(1) USB Virtual Keyboard



(2) USB Virtual Serial Port



(3) Bluetooth



Bluetooth Settings

Set the bluetooth power on/off time



Always on



5mins



10mins



15mins



30mins



60mins

Scanning Mode Setting

► Scan mode settings by scanning the barcode below.

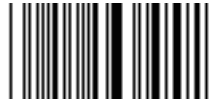
(1)Manual Mode



(2)Sensing Mode



(3)Continuous Mode



► Offline Mode

(1)Offline storage



ON



OFF

(2)Send the offline data



(3)Clear the offline data



(4)Display the quality of offline storage



► Others

(1)Aiming Barcode



ON



OFF

(2)Read Successfully Barcode



ON



OFF

Common Problem(FAQ)

Q: There are some barcodes can not be scanned.

- A:
- a) Firstly, check the barcode type, open the barcode function; if it is verified, try to turn off.
  - b) Unable to know the barcode type, then set all barcodes allowed to be recognized.

Q: The barcode data is incorrect.

- A:
- Check the error display of barcodes (all barcodes errors or specific barcode error)

Q: Barcode can be recognized but not displayed.

- A:
- Firstly, confirm the scanner whether it is in the Bluetooth transferring mode. If yes, the scanner has been connected to the PC.

Q: Aiming Light and LED are not bright.

- A:
- a) Check whether the device is powered on.
  - b) Re-plug the data cable.

State

- Our company does not assume any responsibility for losses caused by natural disasters (such as earthquakes, floods, etc.) that exceed our scope of responsibility.
- In any case, our company does not assume any responsibility for losses caused by using this product, such as loss of profits, loss of reputation, business interruption, loss or change of stored data, and any special, unexpected, associated or intermittent losses caused by the above.
- Our company does not assume the responsibility for the losses caused by due to improper use of hardware or software not specified by the our company .
- Our company does not provide any form of warranty or technical support for the information, data, files, other products, services obtained though the use of this product, and does not assume any responsibility for the use of above description by users.
- Our company are not take any form of guarantee for third-party software used by this product.
- Due to the continuous improvement of the products, the operation and common problems of the models described in the manual are mainly based on actual machines. And it may be changed without notice.

FCC Warning

This device complies with part 15 of the FCC Rules.

Operation is subject to the following two conditions:

- (1) This device may not cause harmful interference, and
- (2) this device must accept any interference received, including interference that may cause undesired operation.

Any Changes or modifications not expressly approved by the party responsible for compliance could void the user's authority to operate the equipment. This equipment has been tested and found to comply with the limits for a Class B digital device, pursuant to part 15 of the FCC Rules. These limits are designed to provide reasonable protection against harmful interference in a residential installation. This equipment generates uses and can radiate radio frequency energy and, if not installed and used in accordance with the instructions, may cause harmful interference to radio communications. However, there is no guarantee that interference will not occur in a particular installation. If this equipment does cause harmful interference to radio or television reception, which can be determined by turning the equipment off and on, the user is encouraged to try to correct the interference by one or more of the following measures:

- Reorient or relocate the receiving antenna.
- Increase the separation between the equipment and receiver.
- Connect the equipment into an outlet on a circuit different from that to which the receiver is connected.
- Consult the dealer or an experienced radio/TV technician for help.

FCC ID: 2AUTE-3378