

H7032说明书

版本:1.0

料号:

折叠尺寸:105×145 (mm)

展开尺寸:420×145 (mm)

材质:80G书页纸

工艺:单色

折叠方式:风琴页

页数:8页



Safety Instructions

- This product is rated as IP65 Waterproof. It can be used outdoors but cannot be immersed in water.
- The power adapter is not waterproof. Avoid exposing it to splashes, water drops, or high-humidity environments.
- Tighten up the waterproof cap before installing the lights.
- The internal light sources of the strip light cannot be replaced. If the light sources sustain damage, the product should be replaced.
- Do not allow children to assemble and install this product without adult supervision.
- Avoid installing this product near major heat sources.
- External dimmers cannot be used with this product.
- Use this product with the provided power adapter only.

Introduction

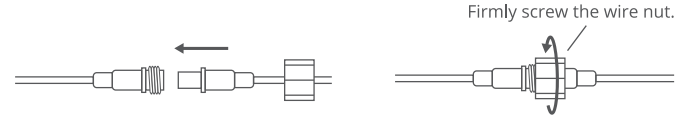
- Thanks for choosing Govee LED strip lights. You can use Govee Home App to adjust brightness, select modes, and set timers.

What You Get

Item	Quantity
Bulb strip lights	2
Adapter & Control Box	1
User Manual	1
Service Card	1

Control String Lights in Series

Connect the string lights as indicated in the picture



Notice: Only 2 string lights can be connected in a series.

Installing Your Device

Installation Steps

Hang the light bulbs onto the rope using the hook.



Notice: When installing the lights, do not leave more than 2 bulbs off the rope as it may affect stability.

Airing Your Device with Govee Home App

What You Need:

- A Wi-Fi router supporting the 2.4GHz and 802.11 b/g/n bands (5GHz is not supported).
- A smartphone or tablet running iOS or Android.

Pairing Instructions

- 1 Download Govee Home App from App Store (IOS) or Google Play (Android).
- 2 Enable your smartphone's Bluetooth.
- 3 Open the app, tap the "+" icon in the top right corner and search for "H7032".
- 4 Tap the device icon and follow the on-screen instructions to complete pairing.



Specifications

Power Input (Adapter)	AC 100-240V 50/60Hz 0.8A Max
Power Output (Adapter)	DC 36V/1A
Length	100ft/30m
Number of Bulbs	50
Light Color	Warm White
Waterproof	Adapter (IPX0) Control Box (IPX5) Bulb String Lights (IP66)
Working Temperature	-20~50°C/-4~122°F

Troubleshooting

- 1 Cannot connect to Govee Home App.
  - Make sure the device is powered on.
  - Make sure your smartphone's Bluetooth has been enabled.
  - Make sure your smartphone is connected to a 2.4GHz WiFi network.
  - Position your smartphone close to the control box, then try connecting again.
- 2 Some of the bulbs do not work.
  - Unplug the adapter, then plug it in again.
  - If the problem persists, please contact Govee Customer Service.

Customer Service

- 🔧 Warranty: 12-Month Limited Warranty
- 🔍 Support: Lifetime Technical Support
- ✉ Email: support@govee.com
- 🌐 Official Website: www.govee.com
- 📺 @Govee   📷 @govee\_official   📺 @govee.official
- 🐦 @Goveeofficial   📘 @Govee.smarthome

# FCC and ISED Canada Statement

This device complies with Part 15 of the FCC Rules and Industry Canada licence-exempt RSS standard(s). Operation is subject to the following two conditions:  
(1) This device may not cause harmful interference, and  
(2) This device must accept any interference received, including interference that may cause undesired operation.  
Warning: Changes or modifications not expressly approved by the party responsible for compliance could void the user's authority to operate the equipment.

Le présent appareil est conforme aux CNR d'Industrie Canada applicables aux appareils radio exempts de licence. L'exploitation est autorisée aux deux conditions suivantes :  
(1) l'appareil nedomit pas produire de brouillage, et  
(2) l'utilisateur de l'appareil doit accepter tout brouillage radioélec trique subi, même si le brouillage est susceptible d'en compromettre le fonctionnement.

**NOTE:** This equipment has been tested and found to comply with the limits for a Class B digital device, pursuant to Part 15 of the FCC Rules.

These limits are designed to provide reasonable protection against harmful interference in a residential installation. This equipment generates uses and can radiate radio frequency energy and, if not installed and used in accordance with the instructions, may cause harmful interference to radio communications. However, there is no guarantee that interference will not occur in a particular installation. If this equipment does cause harmful interference to radio or television reception, which can be determined by turning the equipment off and on, the user is encouraged to try to correct the interference by one or more of the following measures:

1. Reorient or relocate the receiving antenna.
2. Increase the separation between the equipment and receiver.
3. Connect the equipment into an outlet on a circuit different from that to which the receiver is connected.
4. Consult the dealer or an experienced radio/TV technician for help.

This Class B digital apparatus complies with Canadian ICES-005.  
Cet appareil numérique de la classe B est conforme à la norme NMB-005 du Canada.

# FCC and IC Radiation Exposure Statement

This equipment complies with FCC and IC radiation exposure limits set forth for an uncontrolled environment. This equipment should be installed and operated with minimum distance 20cm between the radiator & your body.  
  
la distance entre l'utilisation et l'appareil ne doit pas être inférieure à 20 cm.  
This device uses a non-replaceable light source. When the light source reaches the end of its life cycle, this device should be replaced.  
Not intended for illumination. Only used for creating ambiance.

- 1.Do not connect the rope light to the supply while it is in the packing or wound onto a reel;
- 2.Do not use the rope light when covered or recessed into a surface;
- 3.Do not open or cut the rope light;

**Responsible party :**  
Name: GOVEE MOMENTS(US) TRADING LIMITED  
Address: 13013 WESTERN AVE STE 5 BLUE ISLAND IL 60406-2448  
Email: support@govee.com  
Contact information: https://www.govee.com/support

The Bluetooth® word mark and logos are registered trademarks owned by Bluetooth SIG, Inc. and any use of such marks by Shenzhen Intellirocks Tech. Co., Ltd. is under license.

Govee is a trademark of Shenzhen Intellirocks Tech Co., Ltd.  
Copyright ©2021 Shenzhen Intellirocks Tech Co., Ltd. All Rights Reserved.



# User Manual



Govee Home App

For FAQs and more information,  
please visit: [www.govee.com](http://www.govee.com)

Model: H7032  
Govee LED Bulb String Lights

## FCC WARNING

This device complies with part 15 of the FCC Rules. Operation is subject to the following two conditions: (1) this device may not cause harmful interference, and (2) this device must accept any interference received, including interference that may cause undesired operation.

Any changes or modifications not expressly approved by the party responsible for compliance could void the user's authority to operate the equipment.

NOTE: This equipment has been tested and found to comply with the limits for a Class B digital device, pursuant to Part 15 of the FCC Rules. These limits are designed to provide reasonable protection against harmful interference in a residential installation. This equipment generates, uses and can radiate radio frequency energy and, if not installed and used in accordance with the instructions, may cause harmful interference to radio communications. However, there is no guarantee that interference will not occur in a particular installation.

If this equipment does cause harmful interference to radio or television reception, which can be determined by turning the equipment off and on, the user is encouraged to try to correct the interference by one or more of the following measures:

- Reorient or relocate the receiving antenna.
- Increase the separation between the equipment and receiver.
- Connect the equipment into an outlet on a circuit different from that to which the receiver is connected.
- Consult the dealer or an experienced radio/TV technician for help.

To maintain compliance with FCC's RF Exposure guidelines, This equipment should be installed and operated with minimum distance between 20cm the radiator your body: Use only the supplied antenna.

## **IC Caution:**

This device complies with Industry Canada's licence-exempt RSSs. Operation is subject to the following two conditions:

- (1) This device may not cause interference; and
- (2) This device must accept any interference, including interference that may cause undesired operation of the device.

To maintain compliance with RF exposure guidelines, this equipment should be installed and operated with a minimum distance of 20cm between the radiator and your body.

Le présent appareil est conforme aux CNR d'Industrie Canada applicables aux appareils radio exempts de licence. L'exploitation est autorisée aux deux conditions suivantes:

- (1) l'appareil ne doit pas produire de brouillage, et
- (2) l'utilisateur de l'appareil doit accepter tout brouillage radioélectrique subi, même si le brouillage est susceptible d'en compromettre le fonctionnement.

Pour maintenir la conformité aux directives d'exposition aux radiofréquences, cet équipement doit être installé et utilisé avec une distance minimale de 20 cm entre le radiateur et votre corps.