

7900 MC 75 Terminal



7900 Front and Back Views



7900 Left and Right Side Views





7900 Top and Bottom Views



7900 “LU0E” Unit Configuration
MC75 GSM, 802.11 Radios Included



7900 “LU0E” Label Placement

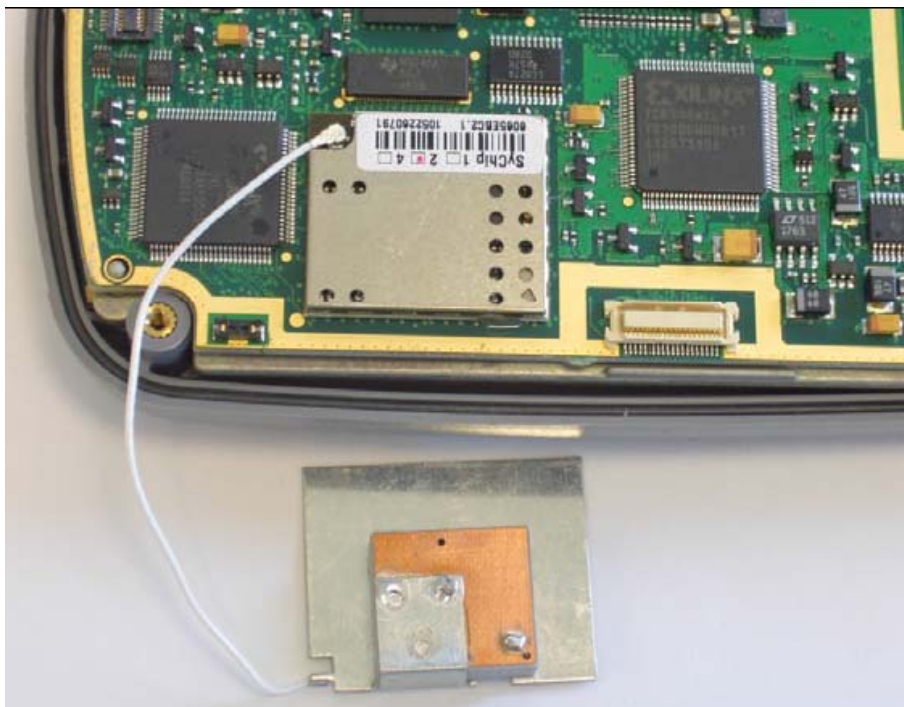


**7900 “LU0E” Radio
Placement Internal**

**Front and Back Views of MC75 GSM
View of 802.11 as Soldered onto Main Board with Antenna Attached**

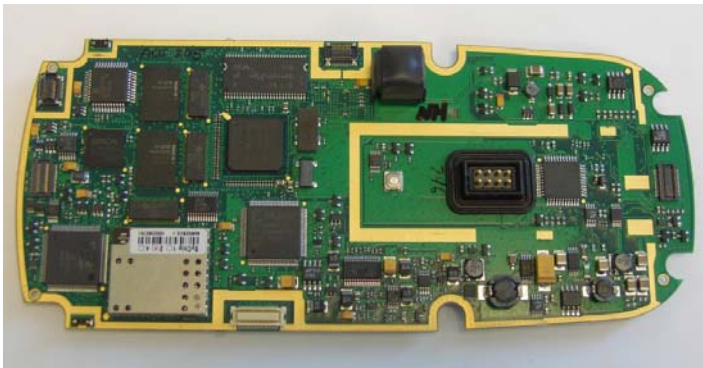


MC75 GSM Radio Front and Back

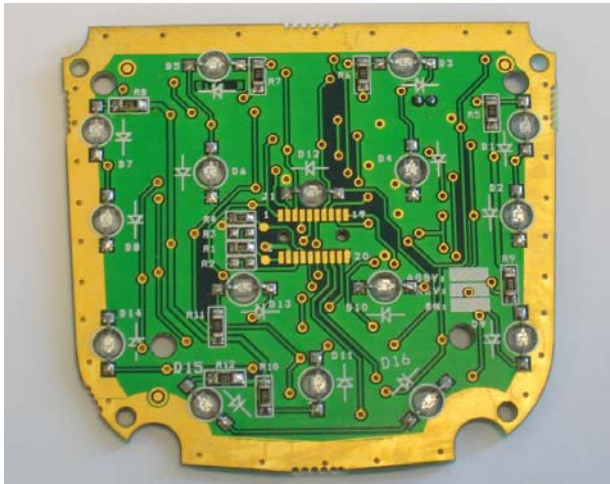
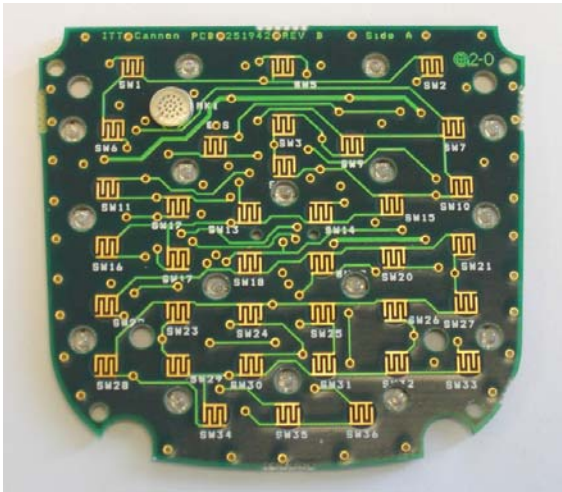


**802.11 Radio as soldered on
Main Board w/ Antenna
attached**

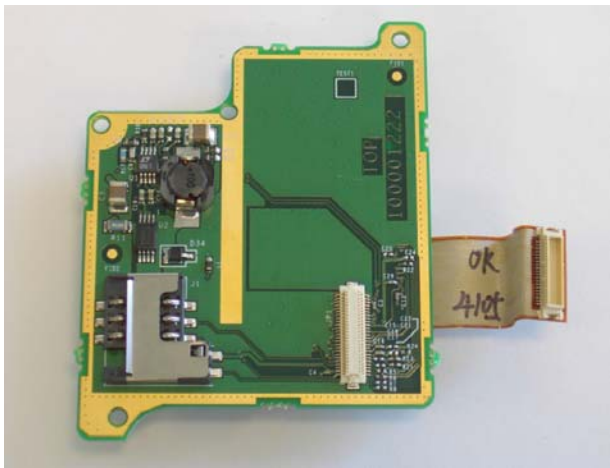
7900 Internal Board Views



Main Board Front and Back Views



Key Board Front and Back Views



GSM Power Board Front and Back Views



7900 view on and placement of GSM module after removal of GSM Power Board