

**EXHIBIT 9****Internal Photographs**

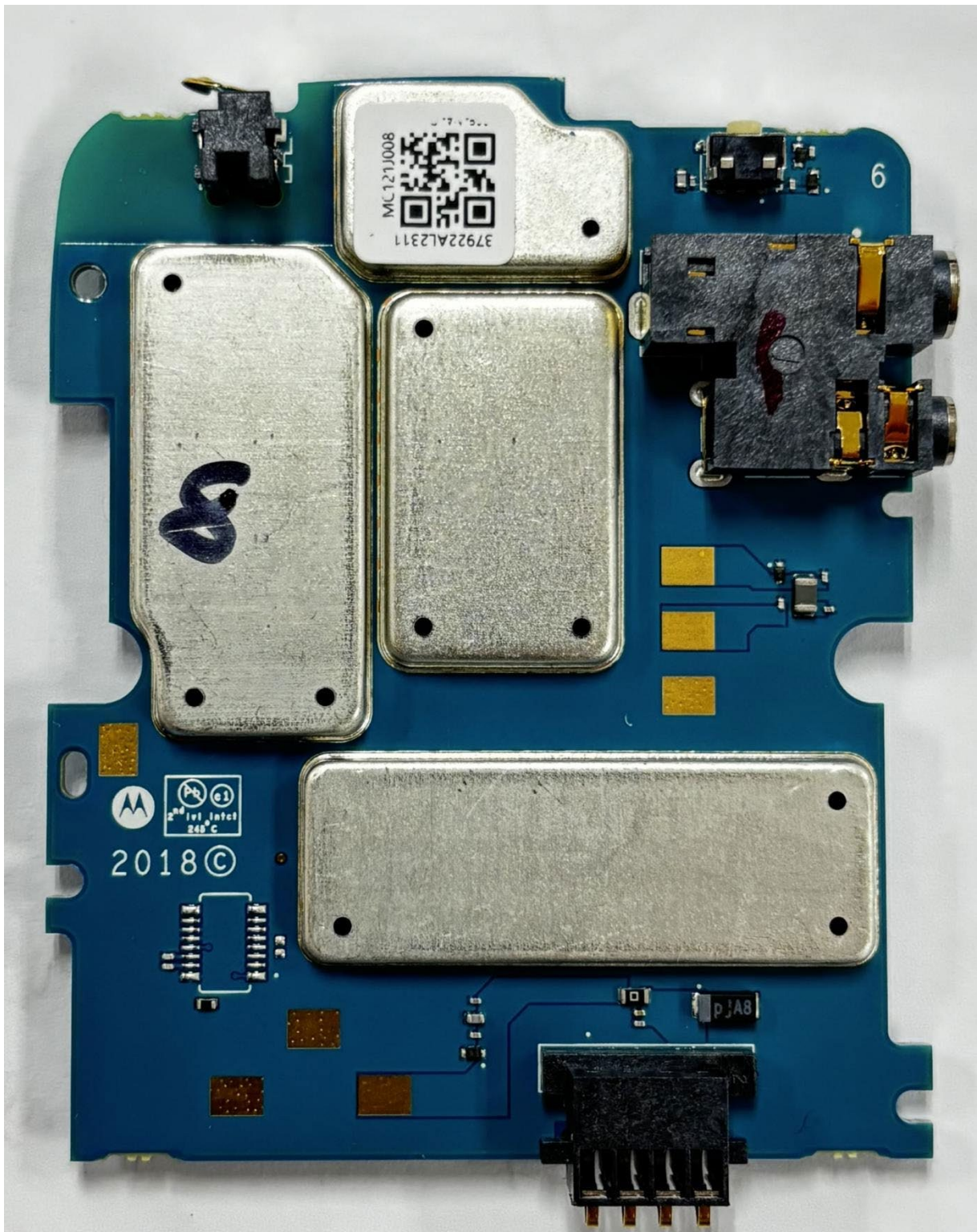
(Pursuant to FCC Part 2.1033(b)(7), 2.1033(c)(12) and RSP 100 Annex C)

The following photographs are attached.

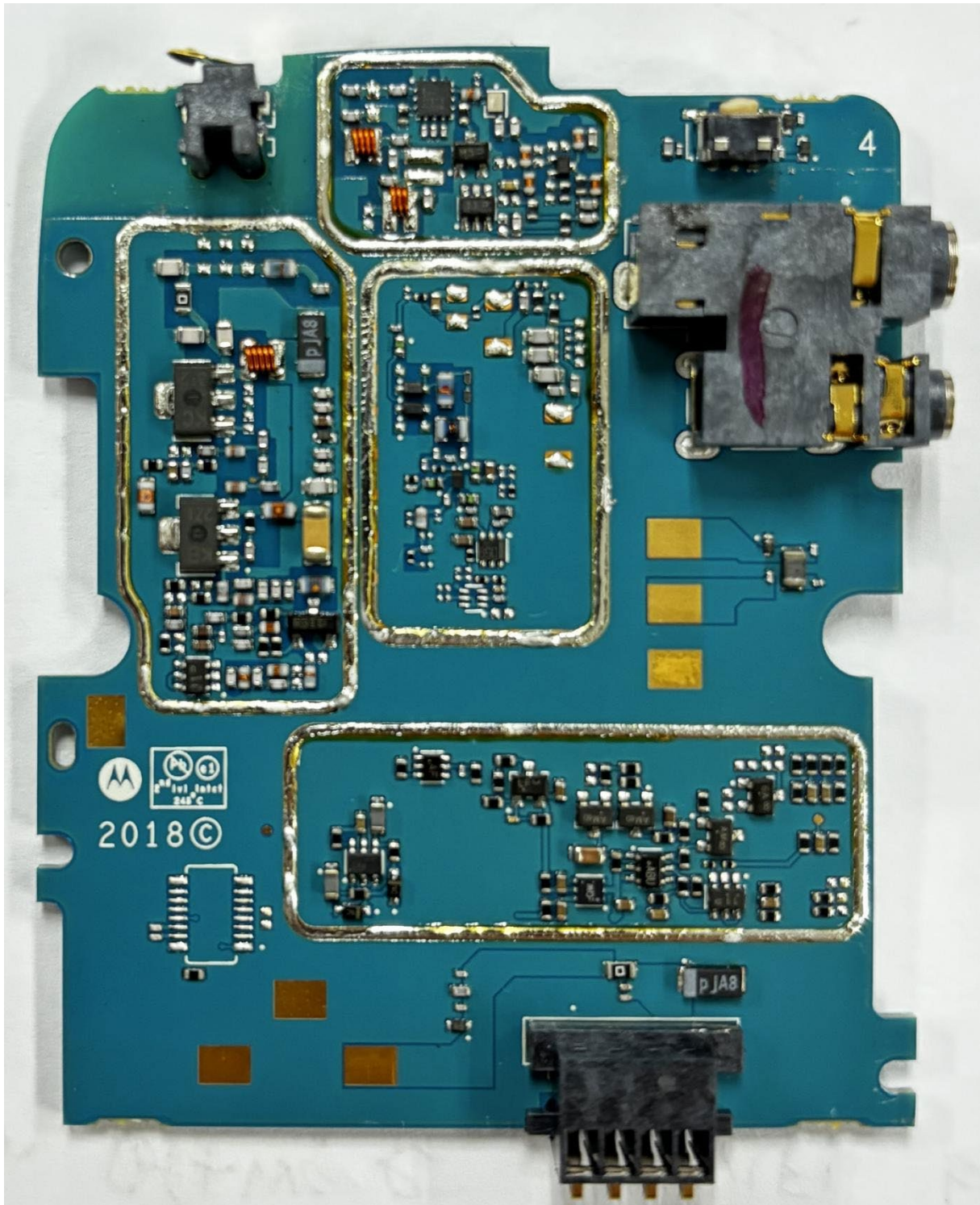
**Exhibit**

- |    |   |    |
|----|---|----|
| 1. | RF board <u>with</u> Shields (Top)                    | 9A |
| 2. | RF board <u>without</u> Shields (Top)                 | 9B |
| 3. | RF board <u>with</u> Shields (Bottom)                 | 9C |
| 4. | RF board <u>without</u> Shields (Bottom)              | 9D |
| 5. | RF board <u>with</u> chassis and housing (Front Side) | 9E |
| 6. | RF board <u>with</u> chassis and housing (Back Side)  | 9F |
| 7. | Keypad Board (Top)                                    | 9G |
| 8. | Keypad Board with Shields (Bottom)                    | 9H |
| 9. | Keypad Board without Shields (Bottom)                 | 9I |

**EXHIBIT 9A - RF board with Shields (Top)**



**EXHIBIT 9B - RF board without Shields (Top)**





**EXHIBIT 9C - RF board with Shields (Bottom)**

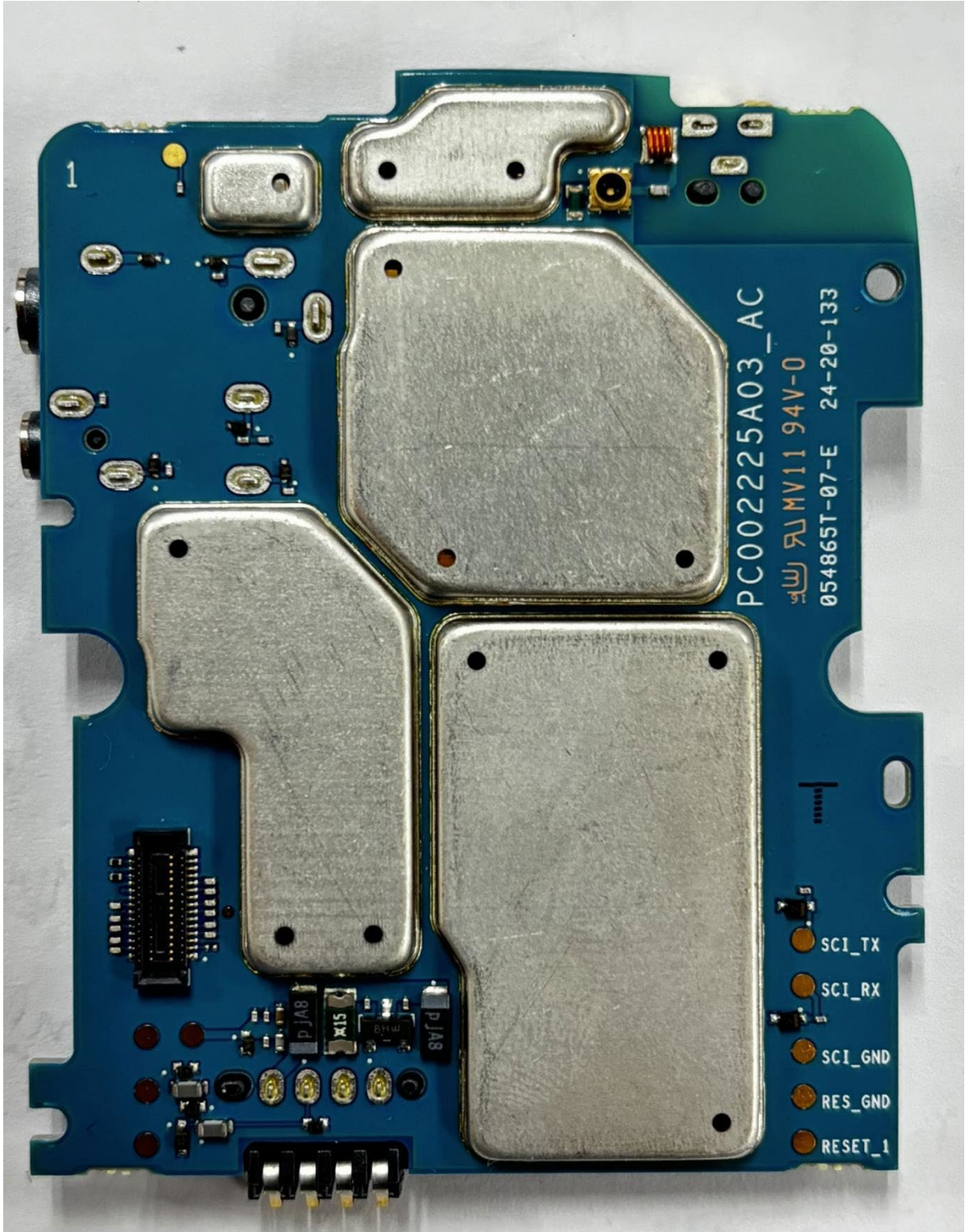
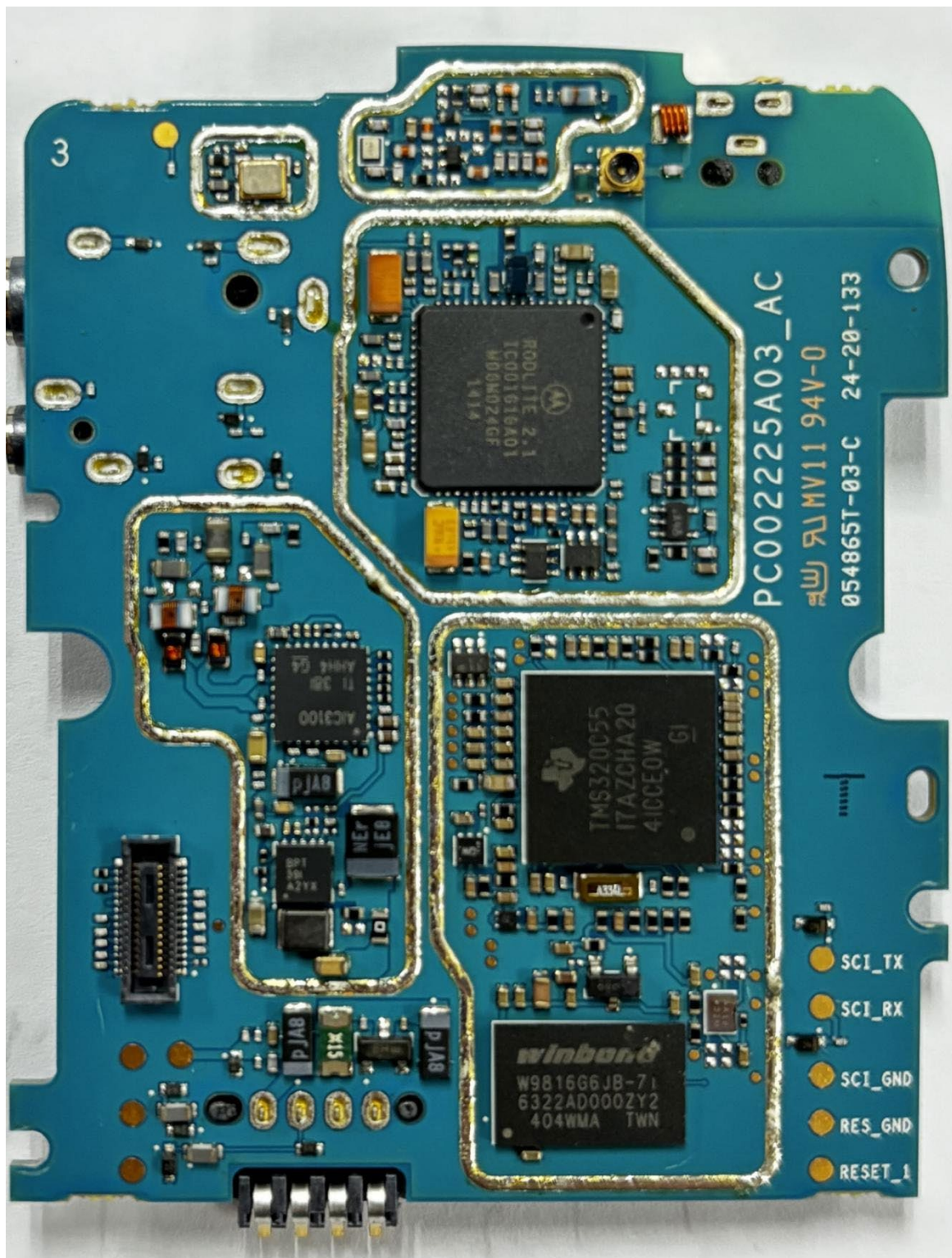




EXHIBIT 9D - RF board without Shields (Bottom)





**EXHIBIT 9E - RF board with chassis and housing (Front Side)**



**EXHIBIT 9F - RF board with chassis and housing (Back Side)**





**EXHIBIT 9G - Keypad Board (Top)**





**EXHIBIT 9H - Keypad Board with Shields (Bottom)**

**EXHIBIT 9I - Keypad Board without Shields (Bottom)**