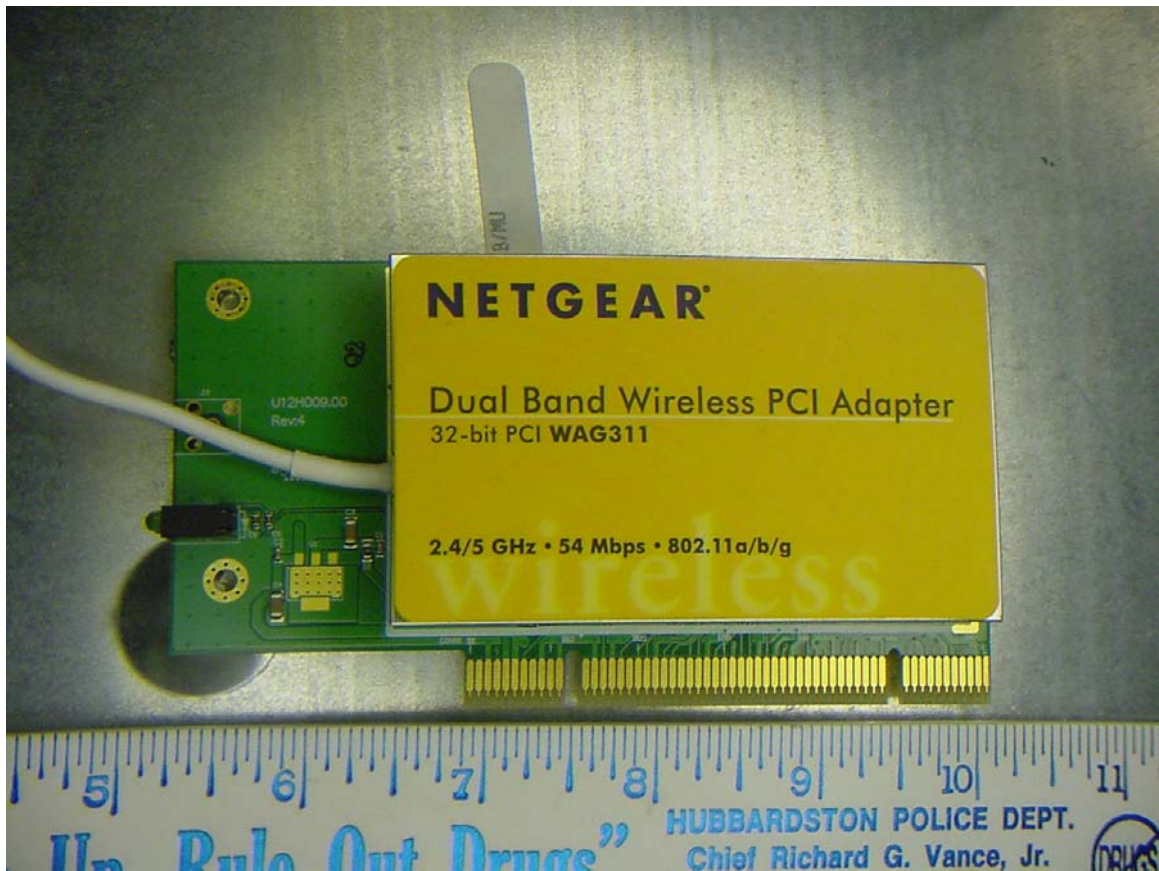


Interior of device enclosure with cover removed.



Interior of device enclosure with cover removed, close up of RF LAN card installation.

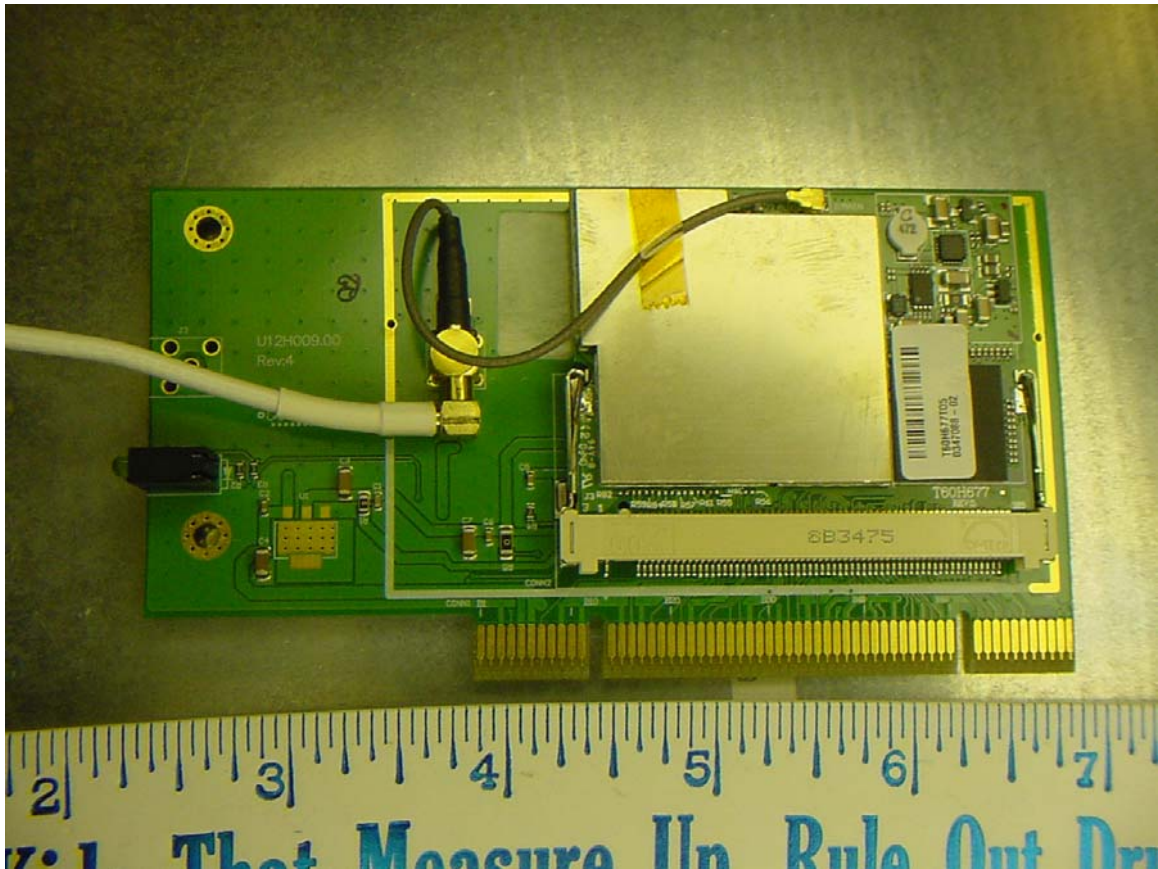


Netgear RF Transceiver top

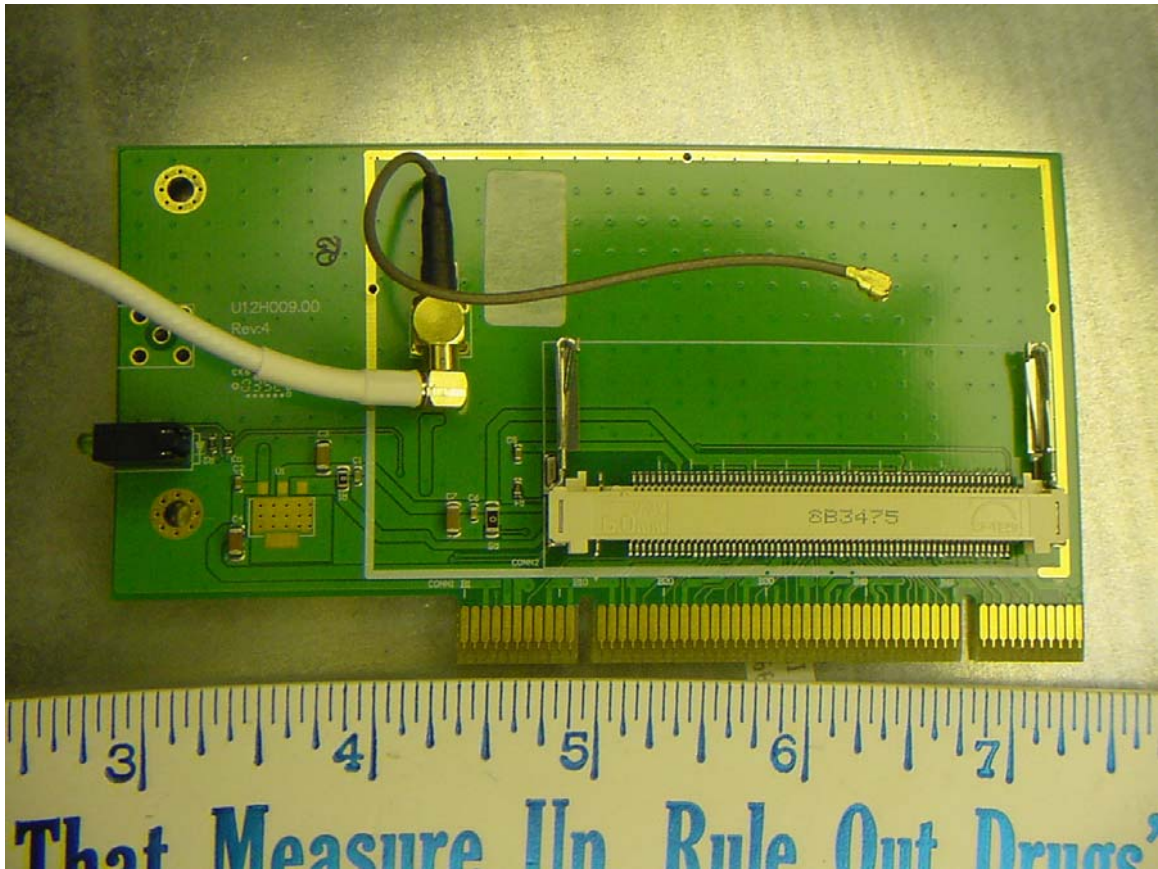




Rear of Radio board

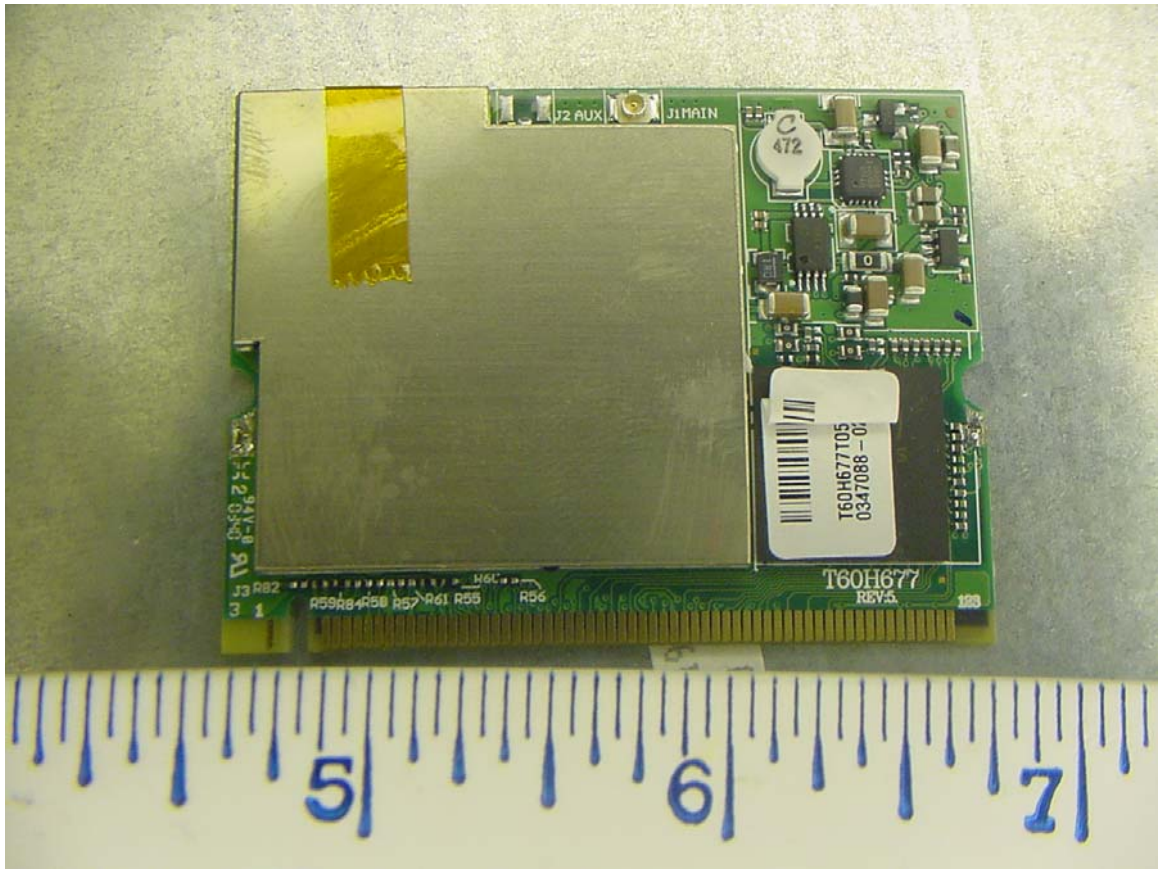


Top of radio board with shield removed, showing module in its slot

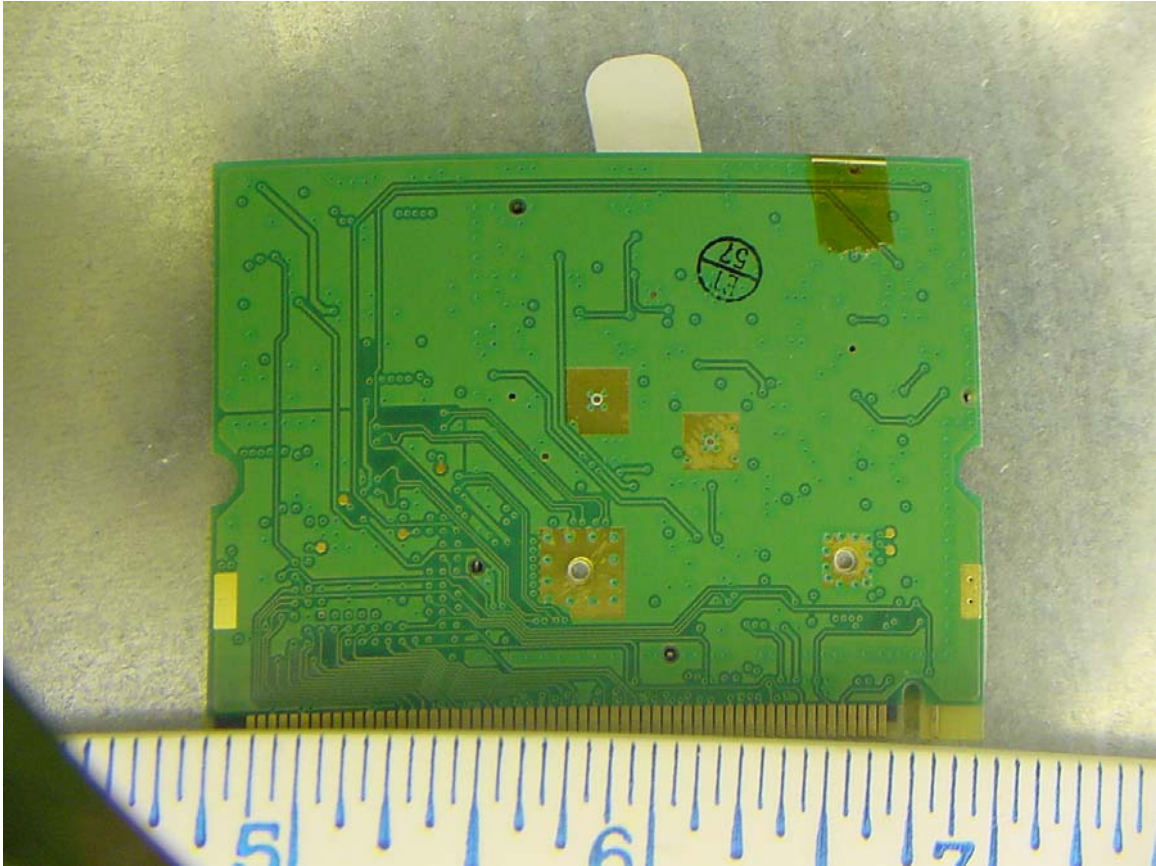


Top of radio board with shield and RF module removed.



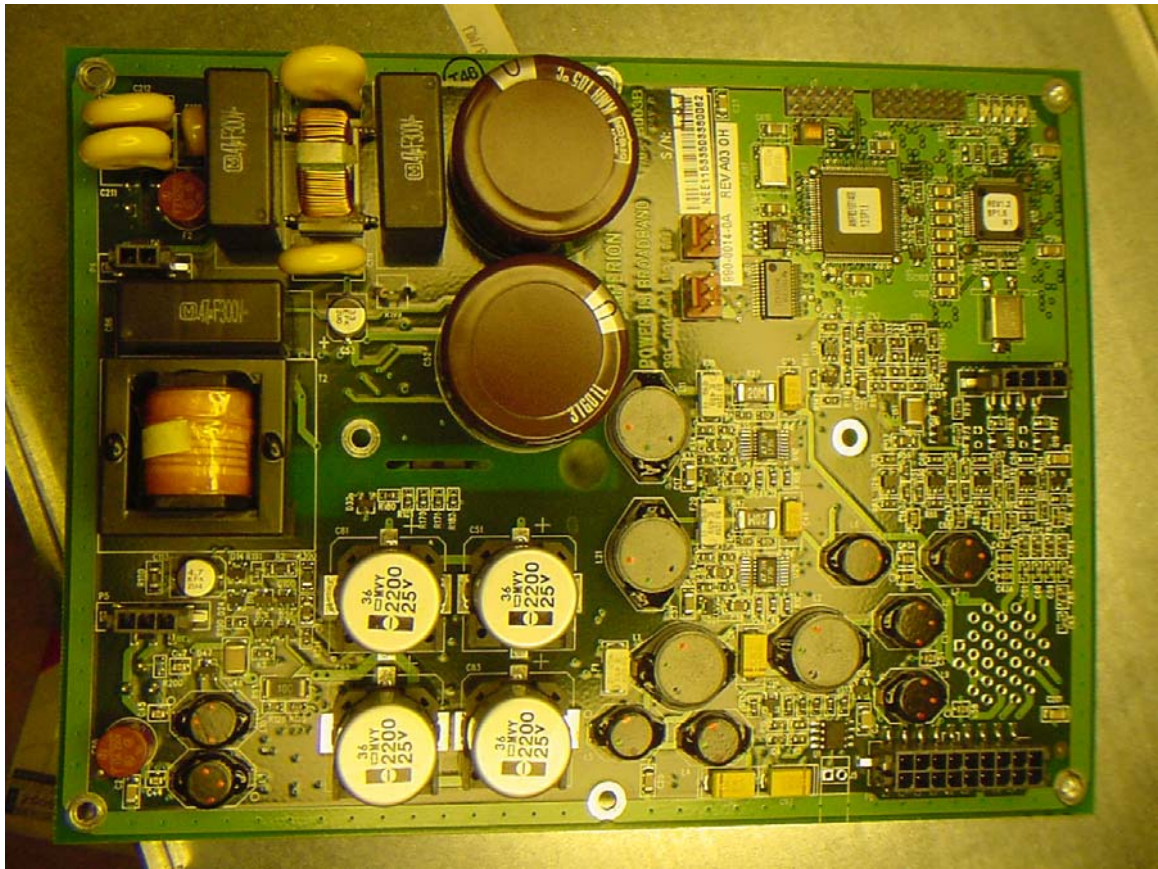


Top of RF module

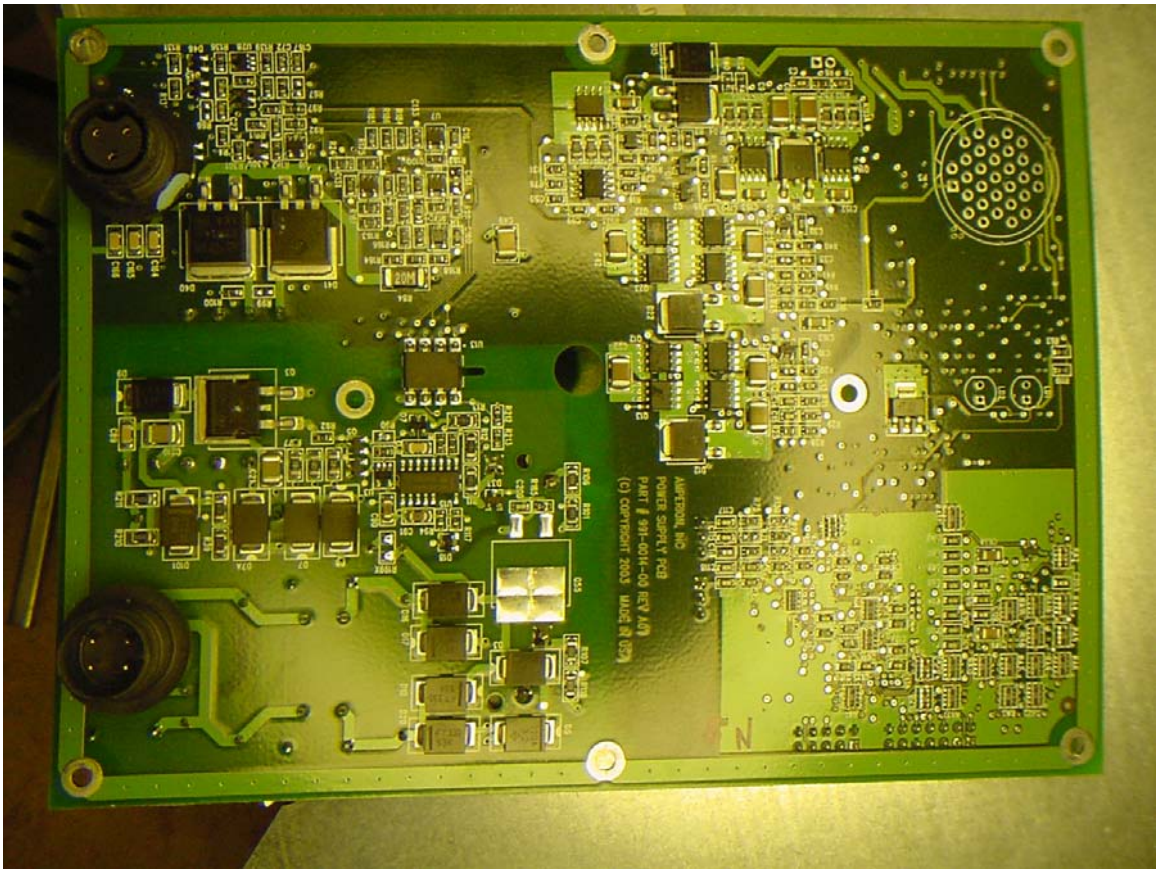


bottom of rf module



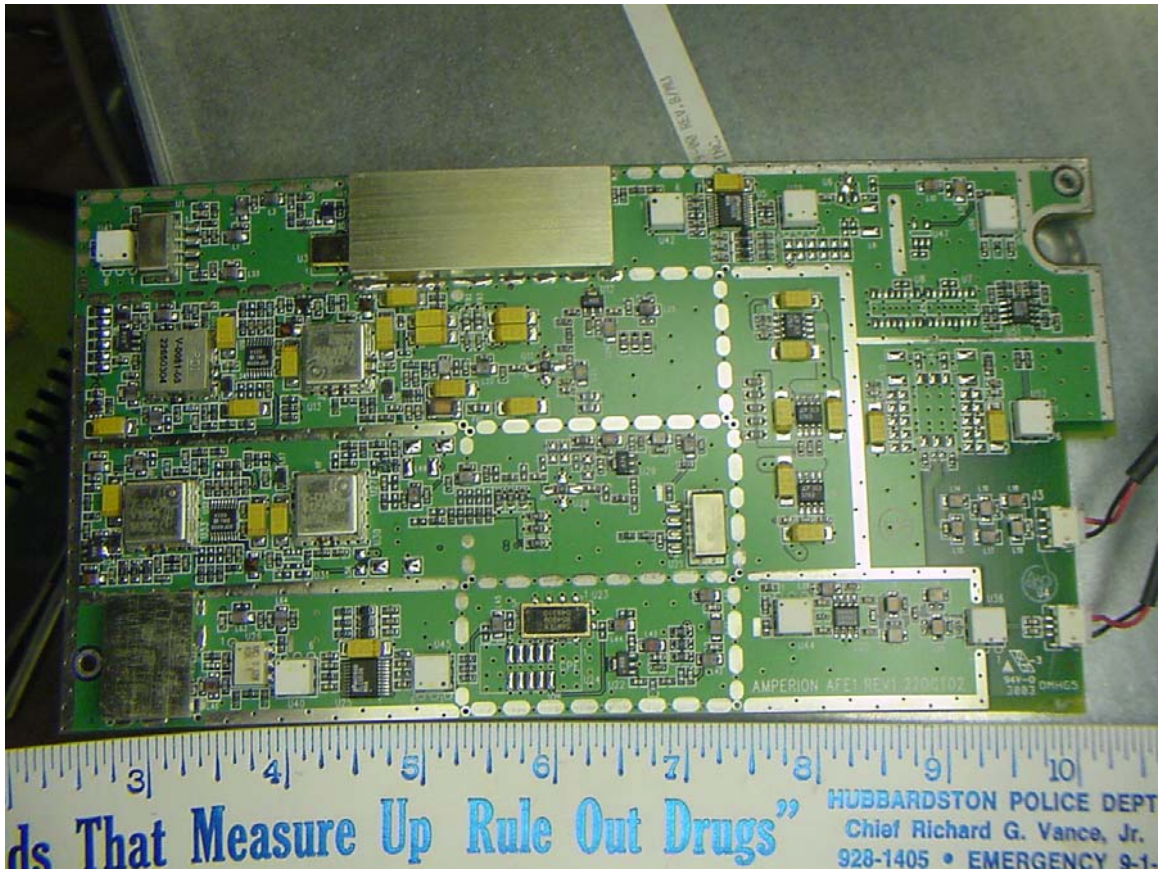


Top of Power Supply Board



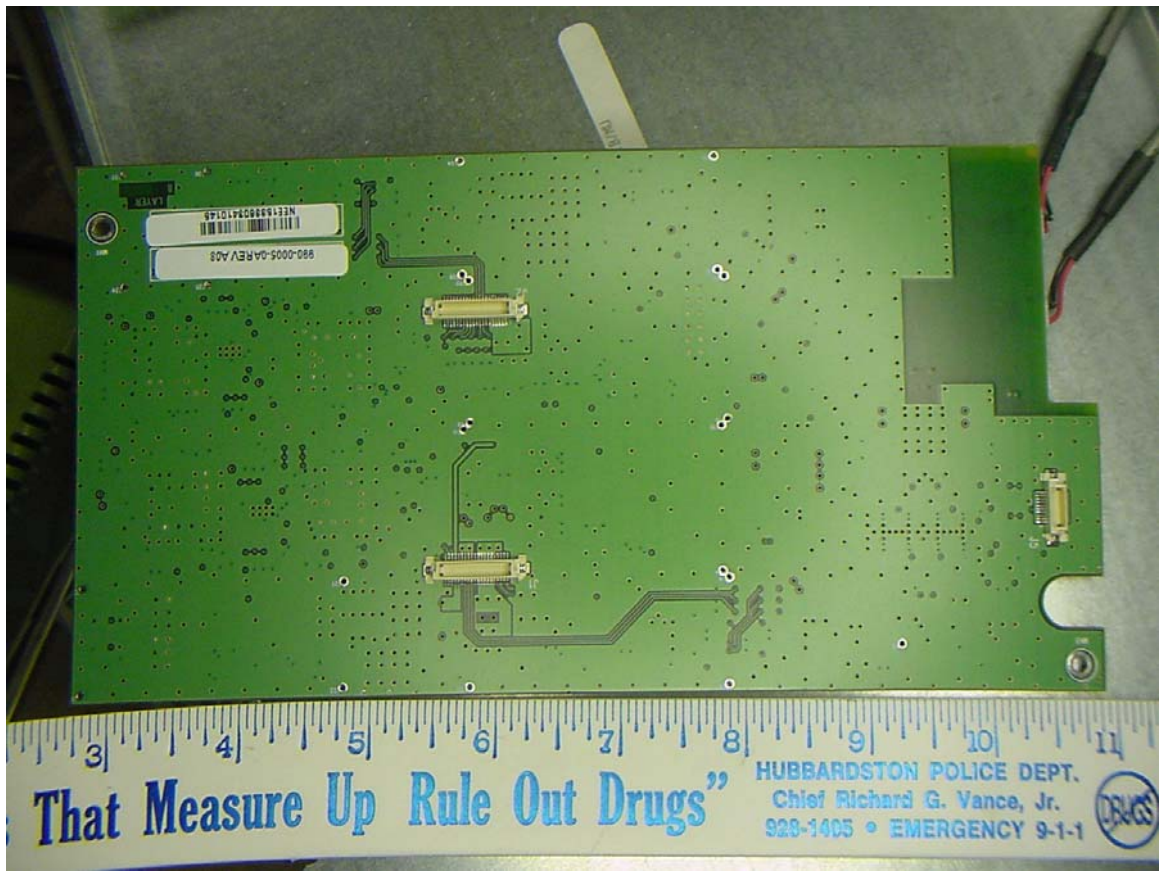
Bottom of power supply board



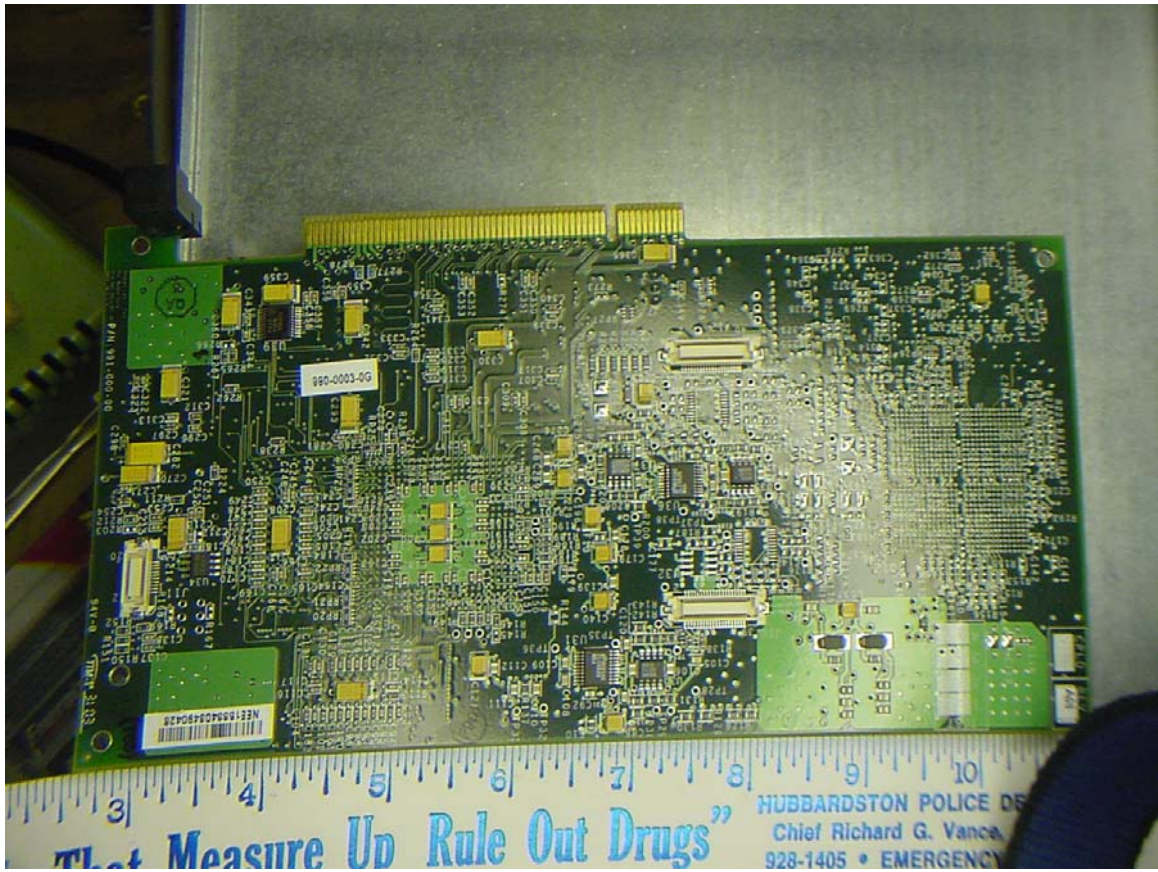


Top of BPL board



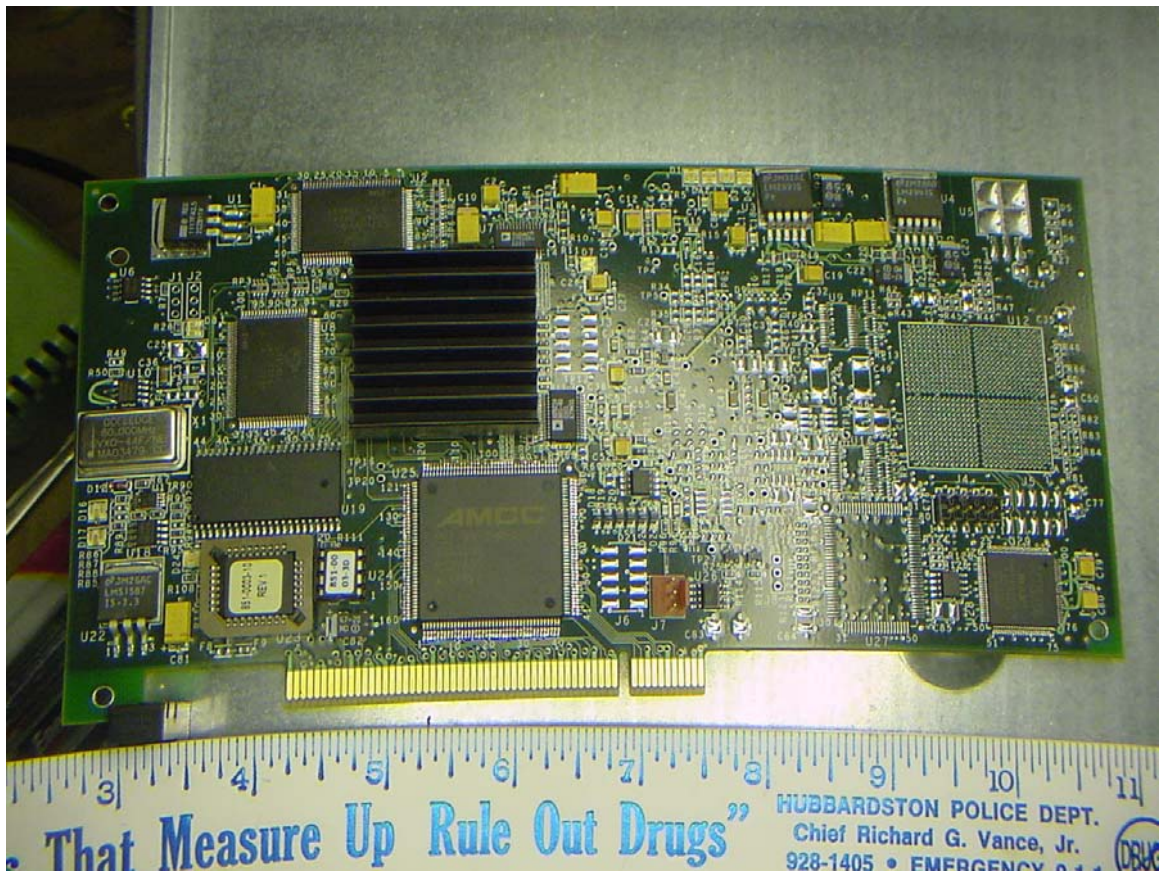


Bottom of BPL board



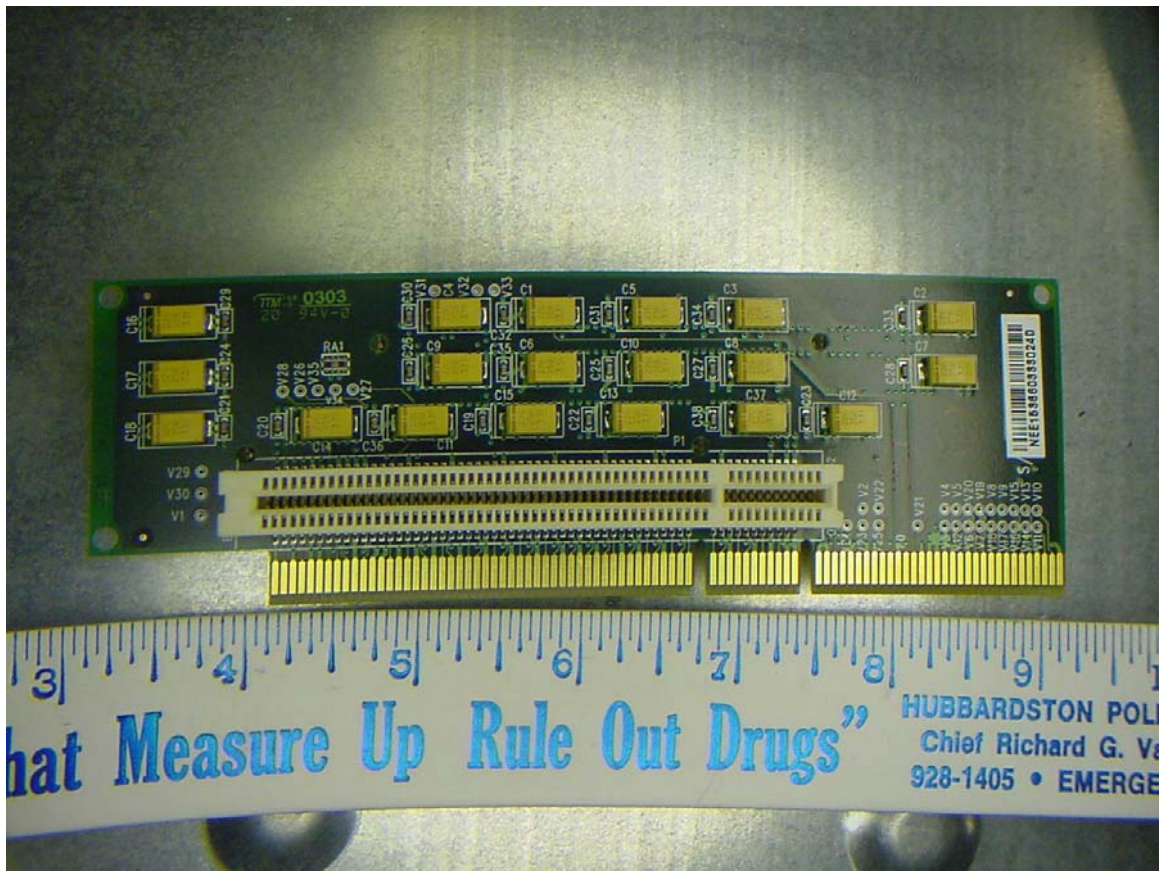
Top of Router Board



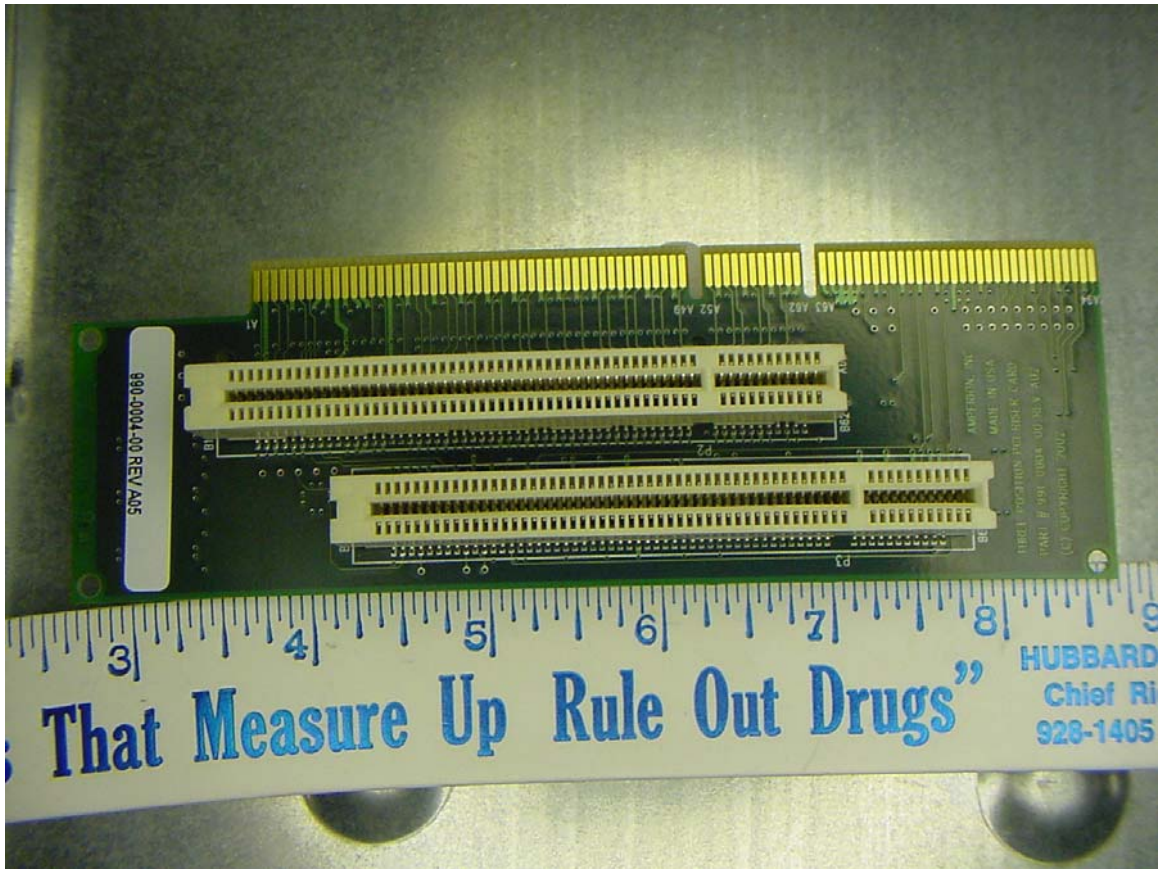


Bottom of router board

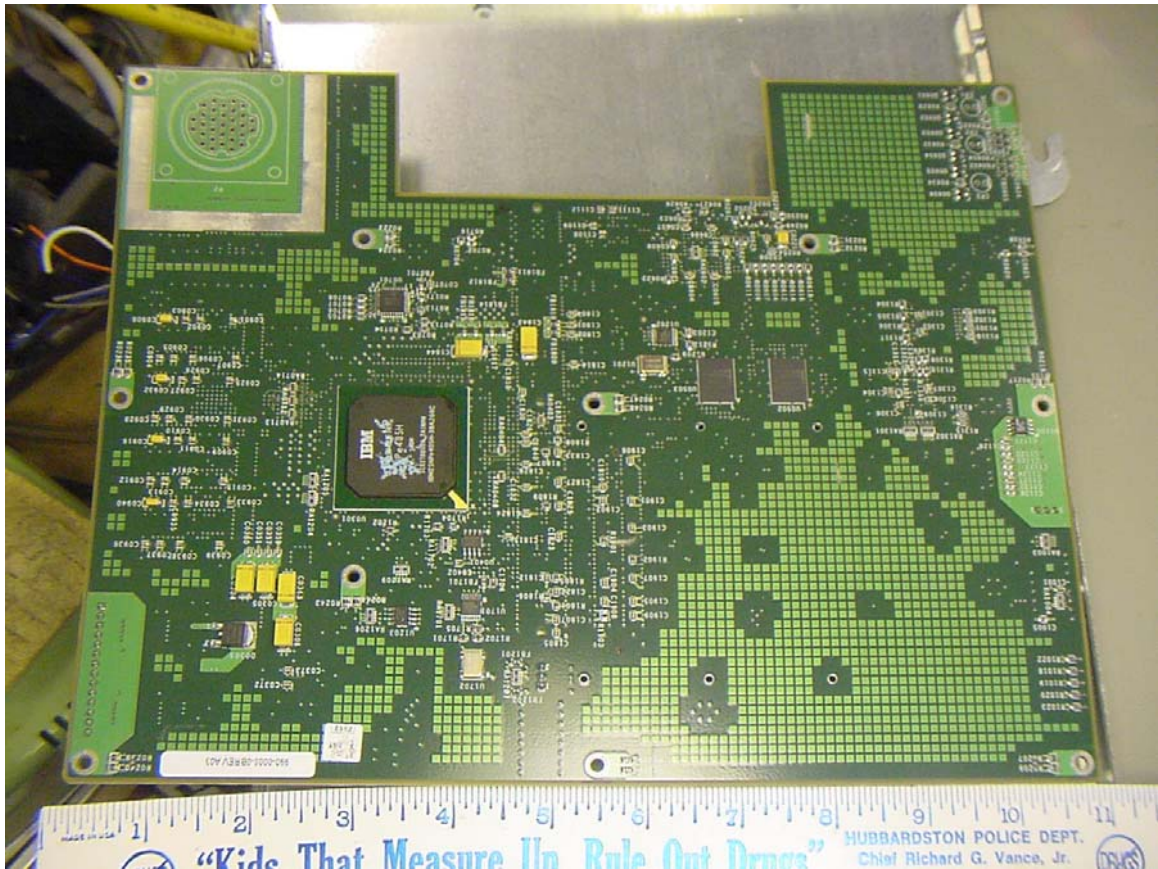




adapter board top

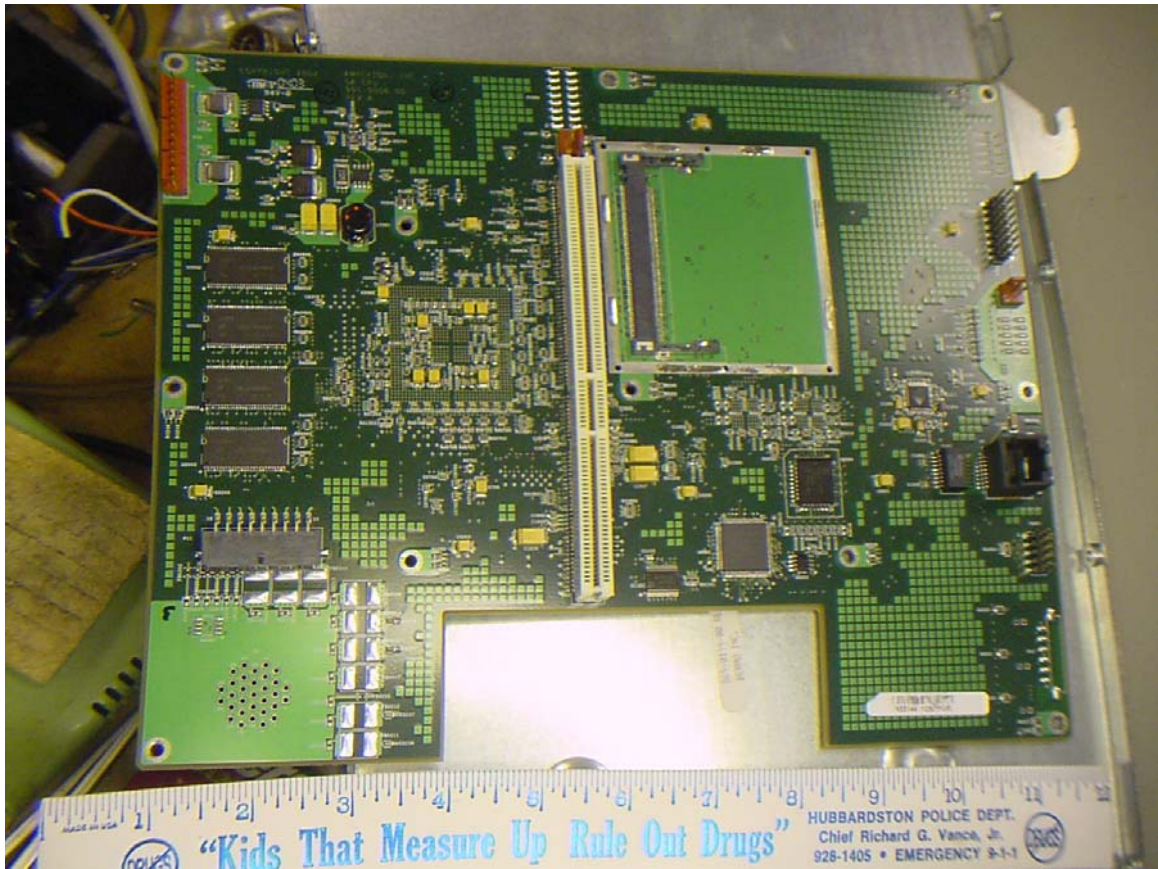


adapter board bottom

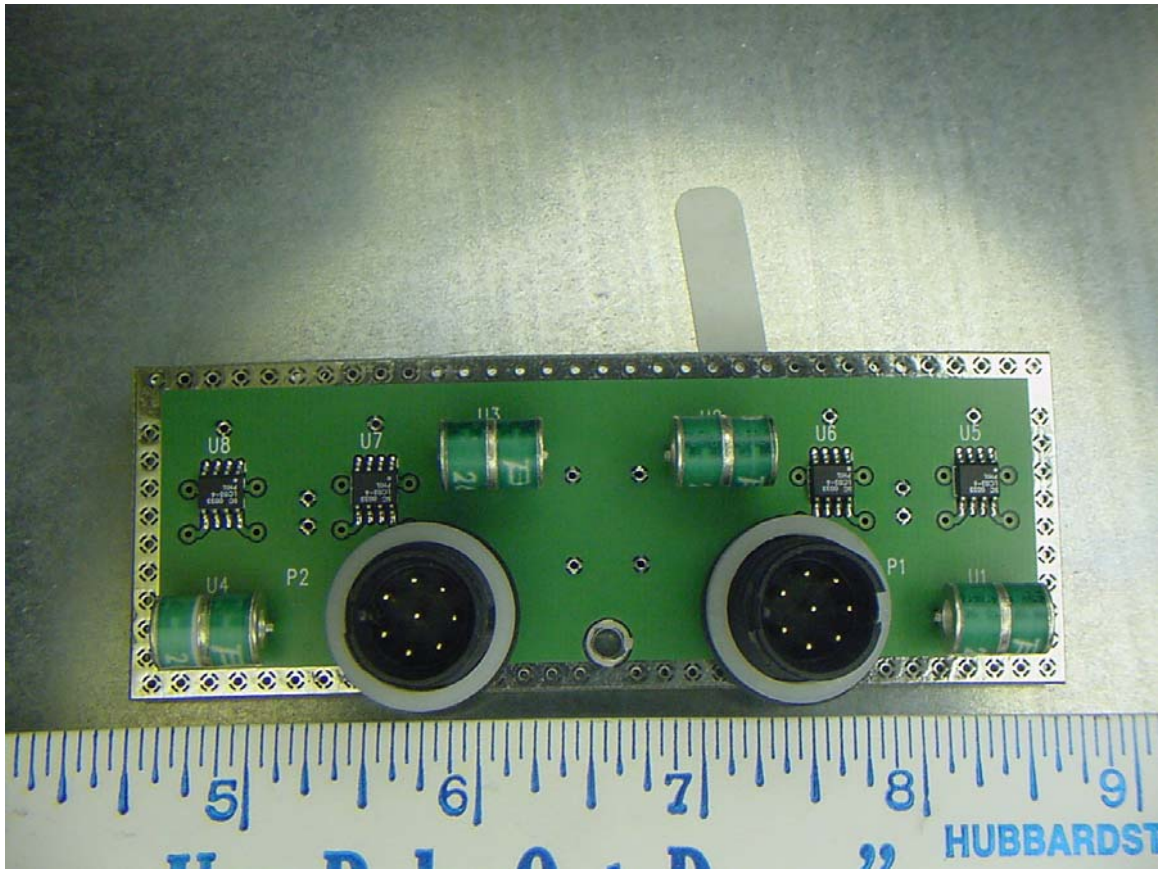


Motherboard bottom

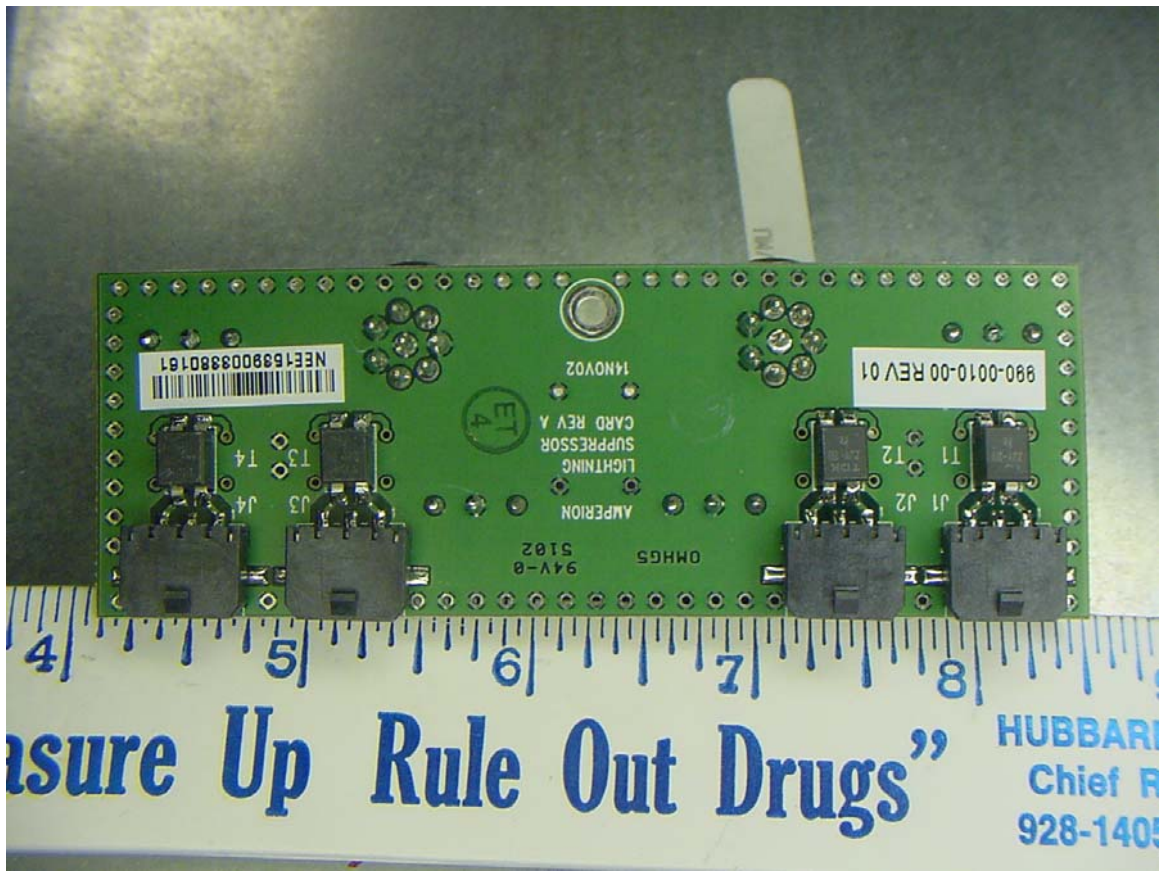




Motherboard Top



Surge suppressor board top



## Surge suppressor board bottom