



**ON!Track  
smart tag  
AI T380**

English



## 1 Information about the documentation




### 1.1 About this documentation

- Read this documentation before initial operation or use. This is a prerequisite for safe, trouble-free handling and use of the product.
- Observe the safety instructions and warnings in this documentation and on the product.
- Always keep the operating instructions with the product and make sure that the operating instructions are with the product when it is given to other persons.

### 1.2 Explanation of symbols used



#### 1.2.1 Warnings

Warnings alert persons to hazards that may occur when handling or using the product. The following signal words are used in combination with a symbol:

	<b>DANGER!</b> Draws attention to an imminent hazard that will lead to serious personal injury or fatality.
	<b>WARNING!</b> Draws attention to a potential hazard that could lead to serious personal injury or fatality.
	<b>CAUTION!</b> Draws attention to a potentially dangerous situation that could lead to minor personal injury or material damage.


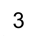


#### 1.2.2 Symbols in the documentation

The following symbols are used in this document:

	Read the operating instructions before use
	Instructions for use and other useful information

#### 1.2.3 Symbols in the illustrations

The following symbols are used in illustrations:

	These numbers refer to the corresponding illustrations found at the beginning of these operating instructions.
	The numbering reflects the sequence of operations shown in the illustrations and may deviate from the steps described in the text.
	Item reference numbers are used in the <b>overview illustration</b> and refer to the numbers used in the key in the <b>product overview</b> section.
	This symbol is intended to draw special attention to certain points when handling the product.

### 1.3 Product information

Hilti products are designed for professional users and only trained, authorized personnel are permitted to operate, service and maintain the products. This personnel must be informed of any particular hazards that may be encountered. The product and its ancillary equipment can present hazards if used incorrectly by untrained personnel or if used not in accordance with the intended use.

### 1.4 Declaration of conformity

We declare, on our sole responsibility, that the product described here complies with the applicable directives and standards. A copy of the declaration of conformity can be found at the end of this documentation.

The technical documentation is filed and stored here:

Hilti Entwicklungsgesellschaft mbH | Tool Certification | Hiltistrasse 6 | D-86916 Kaufering, Germany

## 2 Safety

### 2.1 General safety instructions

Read all safety instructions and other instructions.

Keep all safety instructions and other instructions for future reference.

### General safety instructions

- ▶ Do not cover a type identification plate or other labels.
- ▶ Do not cover any openings in the casing of the item of equipment.
- ▶ Do not obstruct switches, displays and warning lights.
- ▶ To avoid surface damage or chemical reactions, check that the adhesive is compatible with the surface before applying the ON!Track smart tag.
- ▶ Keep away from children.

## 3 Description

### 3.1 Intended use

The **Hilti** AI T380 ON!Track smart tag makes it possible to clearly identify an item of equipment by way of a Bluetooth signal, NFC signal or a 2D-barcode. After activation, the AI T380 continuously transmits a radio signal that allows the user of the Hilti ON!Track system to determine the location of the item of equipment. A smartphone app and a Web application for the management of items of equipment is available from **Hilti**. The battery in the **Hilti** AI T380 ON!Track smart tag is not replaceable.

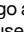
### 3.2 Items supplied

20 x AI T380  
1 x operating instructions

### 3.3 Accessories

An additional adapter that allows the AI T380 to be attached to a cable or tied / clipped to an object is available from **Hilti**.

### 3.4 Third-party wordmarks, trademarks and logos

The **Bluetooth®** wordmark and the  logo are registered trademarks and the property of **Bluetooth SIG, Inc.** and **Hilti** has been granted a license to use these trademarks.

The **Android™** and **Chrome™** trademarks are the property of **Google Inc.**

The **iPhone®** and **iOS** trademarks are the property of **Apple Inc.**

All other trademarks and wordmarks used, even when not expressly stated or marked as such, are the property of their applicable owners.

## 4 Prerequisites

### 4.1 Prerequisites

In order to use the functionality of the AI T380, the **Hilti** ON!Track app is required. In order to use this corresponding app, a user name and a password are required.

The minimum requirements are as follows:

#### System requirements

Smartphone / tablet	Android™ 5 (or higher) iOS® 10 (or higher) Compatible with Bluetooth low energy devices
Near Field Communication (NFC)	Necessary for activation and deactivation Not supported by the iPhone®
Browser	Internet Explorer or Chrome™

For further information about **Hilti** ON!Track, please contact Hilti Service or visit <http://ontrack.hilti.com>.

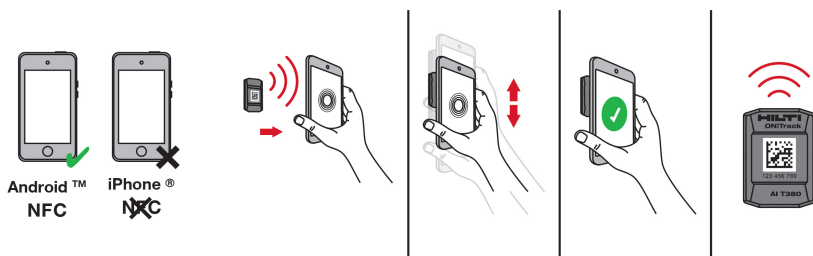
## 5 Technical data

### 5.1 Technical data

Protection class	IP 67
Dimensions	38 mm x 28 mm x 11 mm (1.5" x 1.1" x 0.4")
Operating temperature	-20 °C ... 65 °C (-4 °F ... 149 °F)
Storage temperature	-25 °C ... 80 °C (-13 °F ... 176 °F)
Battery (not replaceable)	CR2032 button cell
Battery life (at room temperature)	3 years
Communication standard	Bluetooth® 4.0
Signal range (can vary greatly depending on surrounding conditions)	30 m (98 ft - 10 in)
Signal interval	5 s
Frequency	2,402 MHz ... 2,480 MHz
Maximum emitted transmission power	3.20 mW

## 6 Operation

### 6.1 Activation



1. Start the **Hilti ON!Track** app and select **Activation** from the menu.



#### Note

The ON!Track smart tag is switched off when supplied and must be activated before use. Activation is possible only using an Android device with NFC functionality.

2. To begin activation, hold the ON!Track smart tag against the back of the smartphone, so that both are in contact.
3. Move the ON!Track smart tag over the back of smartphone in order to find the position of the NFC antenna.

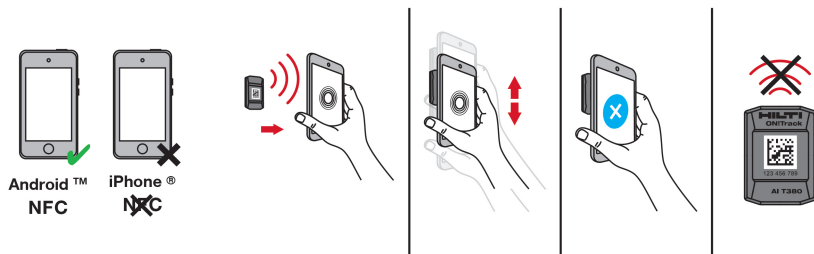


#### Note

The position of the NFC antenna on each smartphone model is different. Search for the right position for activation by moving the ON!Track smart tag around against the back of the smartphone.

4. The smartphone provides confirmation as soon as the ON!Track smart tag has been activated.

## 6.2 Deactivation



1. Start the **Hilti ON!Track** app and select **Deactivation** from the menu.



### Note

Deactivation is possible only using an Android device with NFC functionality.

2. To begin deactivation, hold the ON!Track smart tag against the back of the smartphone, so that both are in contact.
3. Move the ON!Track smart tag over the back of smartphone in order to find the position of the NFC antenna.



### Note

The position of the NFC antenna on each smartphone model is different. Search for the right position for deactivation by moving the ON!Track smart tag around against the back of the smartphone.

4. The smartphone provides confirmation as soon as the ON!Track smart tag has been deactivated.

## 7 Transport

Deactivate the **Hilti AI T380 ON!Track** smart tag before transportation in an aircraft.



### Note

When traveling by air, please observe the regulations regarding restriction of the use of personal electronic devices and **Bluetooth** devices, as issued by the applicable airline.

## 8 RoHS (Restriction of Hazardous Substances)

Click on the link to go to the table of hazardous substances: [qr.hilti.com/r7068430](https://qr.hilti.com/r7068430).

There is a link to the RoHS table, in the form of a QR code, at the end of this document.

## 9 Disposal



The **Hilti AI T380 ON!Track** smart tag contains a battery.



Do not dispose of the **Hilti ON!Track** smart tag AI T380 as household waste. Instead, dispose of it in accordance with national regulations.

## 10 Manufacturer's warranty

- Please contact your local **Hilti** representative if you have questions about the warranty conditions.

**CAUTION**

This equipment has been tested and found to comply with the limits for a class B digital device, pursuant to part 15 of the FCC rules. These limits are designed to provide reasonable protection against harmful interference in a residential installation. This equipment generates, uses and may radiate radio frequency energy. Accordingly, if not installed and used in accordance with the instructions, it may cause harmful interference to radio communications.

However, there is no guarantee that interference will not occur in a particular installation. If this equipment does cause harmful interference to radio or television reception, which can be determined by turning the equipment off and on, the user is encouraged to try to correct the interference by taking the following measures:

Reorient or relocate the receiving antenna.

Increase the separation between the equipment and receiver.

Connect the equipment to a power outlet on a circuit different from that to which the receiver is connected.

Consult your dealer or an experienced TV/radio technician for assistance.

**NOTE**

Changes or modifications not expressly approved by Hilti may restrict the user's authorization to operate the equipment.

This device complies with part 15 of the FCC Rules and RSS-210 of the IC.

Operation is subject to the following two conditions:

This device should cause no cause harmful interference.

This device must accept any interference received, including interference that may cause undesired operation.

**Note**

Changes or modifications not expressly approved by **Hilti** can restrict the user's right to operate the device.







**Hilti Aktiengesellschaft**  
Feldkircherstraße 100  
9494 Schaan | Liechtenstein

**AI T380 (01)**

[2017]

2014/53/EU

EN ISO 12100

2011/65/EU

EN 60950-1:2006 + A11:2009 +  
A1:2010 + A12:2011 + AC:2011 +  
A2:2013  
EN 301 489-1 V2.2.0 (Draft)  
EN 301 489-3 V2.1.1 (Final Draft)  
EN 301 489-17 V3.2.0 (Draft)  
EN 300 328 V2.1.1  
EN 62479:2010  
EN 300 330 v.2.1.1 (2017-02)

Schaan, 12/2017

**Paolo Luccini**

Head of Quality and  
Process-Management  
BA Electric Tools & Accessories

**Thomas Hillbrand**

Head of BU Measuring Systems  
BU Measuring Systems







Hilti Corporation  
LI-9494 Schaan  
Tel.: +423 234 21 11  
Fax: +423 234 29 65  
[www.hilti.group](http://www.hilti.group)

Hilti = registered trademark of Hilti Corp., Schaan



2182310

20171213