

FTLTEF016 Product Specification

Field Theory

1061 High St

Mundelein, IL 60060

Email: info@fieldtheoryinc.com



LTE Antenna with Cable

RADIO SPECIFICATION

LTE Bands: 2, 4Tx, 4Rx, 5, 12, 13, 14, 66Tx, 66Rx, and 71

MECHANICAL

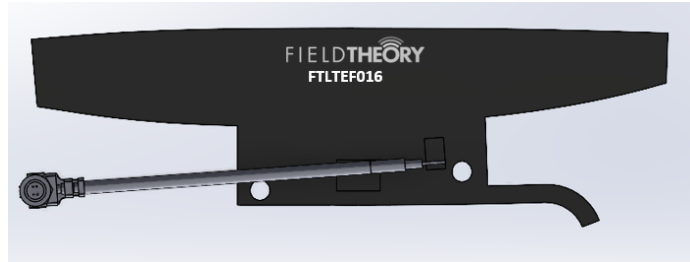
FPC Dimensions (mm): 55.22 x 17.16 x 0.365

Overall Cable Length (mm): 37.00

Cable Standard (mm): 1.13 Diameter

Connector: MHF1 Plug (u.FL Compatible)

Adhesive: 3M 468MP 200MP or Equivalent



ENVIRONMENTAL

Storage Temperature: -10°C to +40°C

Compliance: RoHS

Metrics

Performance (Typical as measured in Device)

Band	2	4 Tx	4 Rx	5	12	13	14	66 Tx	66 Rx	71
Efficiency (%)	53	47	52	43	50	51	50	47	52	41
Peak Gain (dBi)	1.7	0.42	-0.7	-0.3	-0.7	-0.1	-0.7	0.42	-0.7	-1.0
Impedance (ohms)	50	50	50	50	50	50	50	50	50	50
VSWR	≤ 2.5	≤ 2.5	≤ 2.5	≤ 2.5	≤ 2.5	≤ 2.5	≤ 2.5	≤ 2.5	≤ 2.5	≤ 2.5
Polarization	Linear	Linear	Linear	Linear	Linear	Linear	Linear	Linear	Linear	Linear
Maximum Input Power (W)	10	10	10	10	10	10	10	10	10	10

LTE Antenna with Cable

FTLTEF016 Product Specification

Field Theory

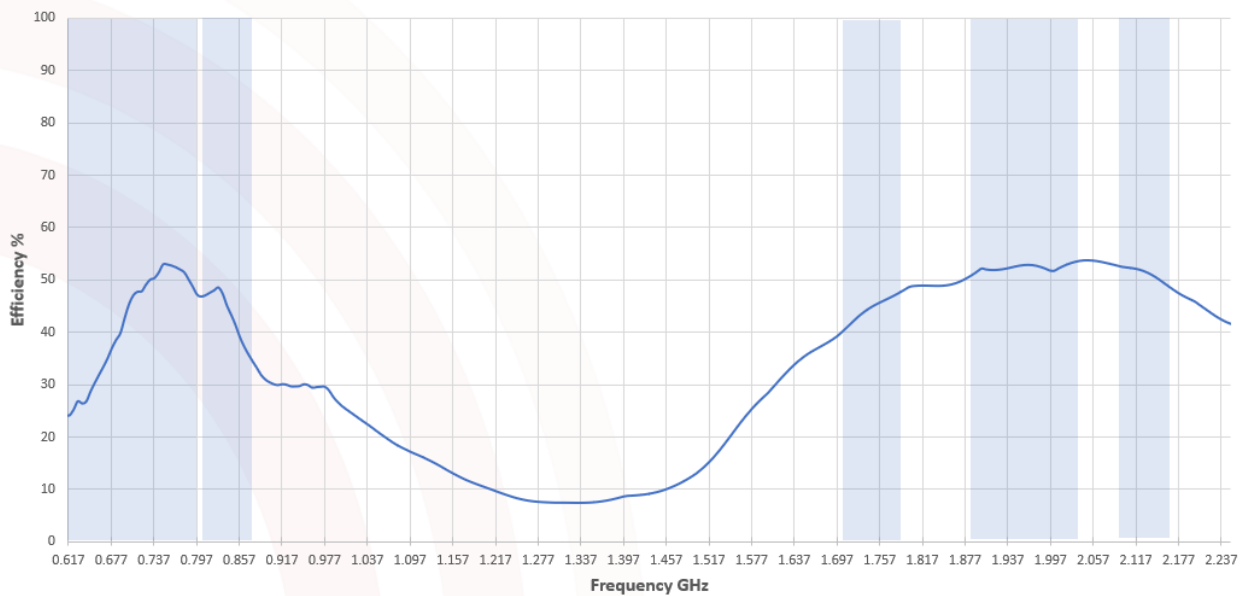
1061 High St

Mundelein, IL 60060

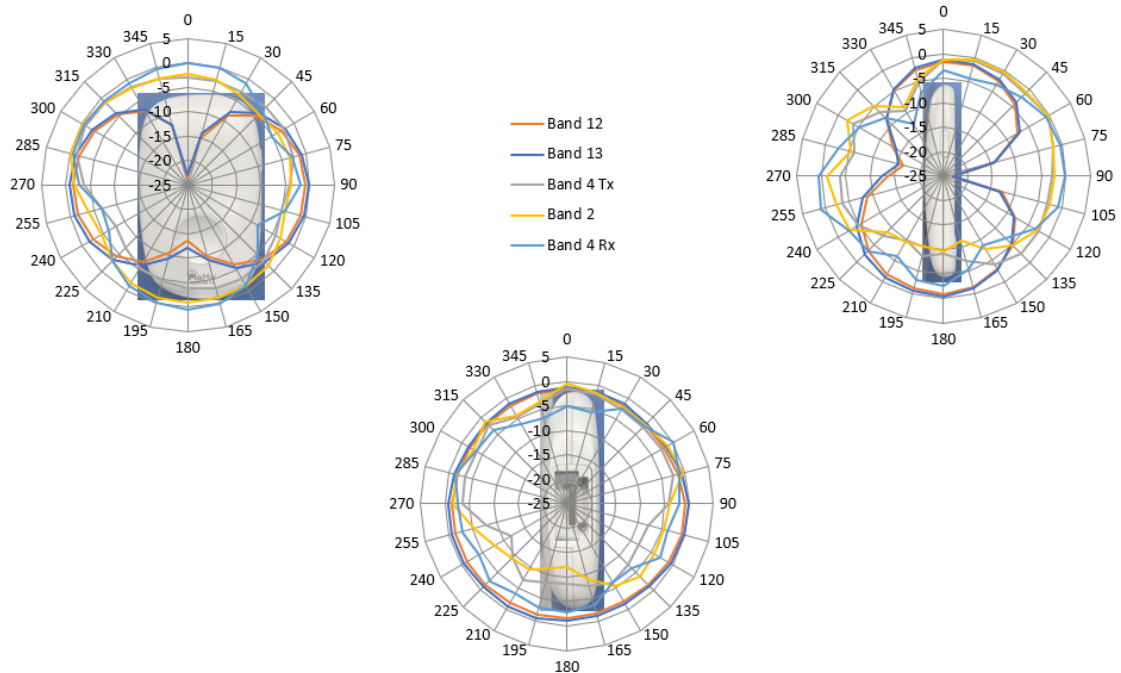
Email: info@fieldtheoryinc.com



Antenna Performance — Passive Efficiency (Typical as measured in Device)



1D Plots and DUT Orientation (Typical as measured in Device)



LTE Antenna with Cable

FTLTEF016 Product Specification

Field Theory

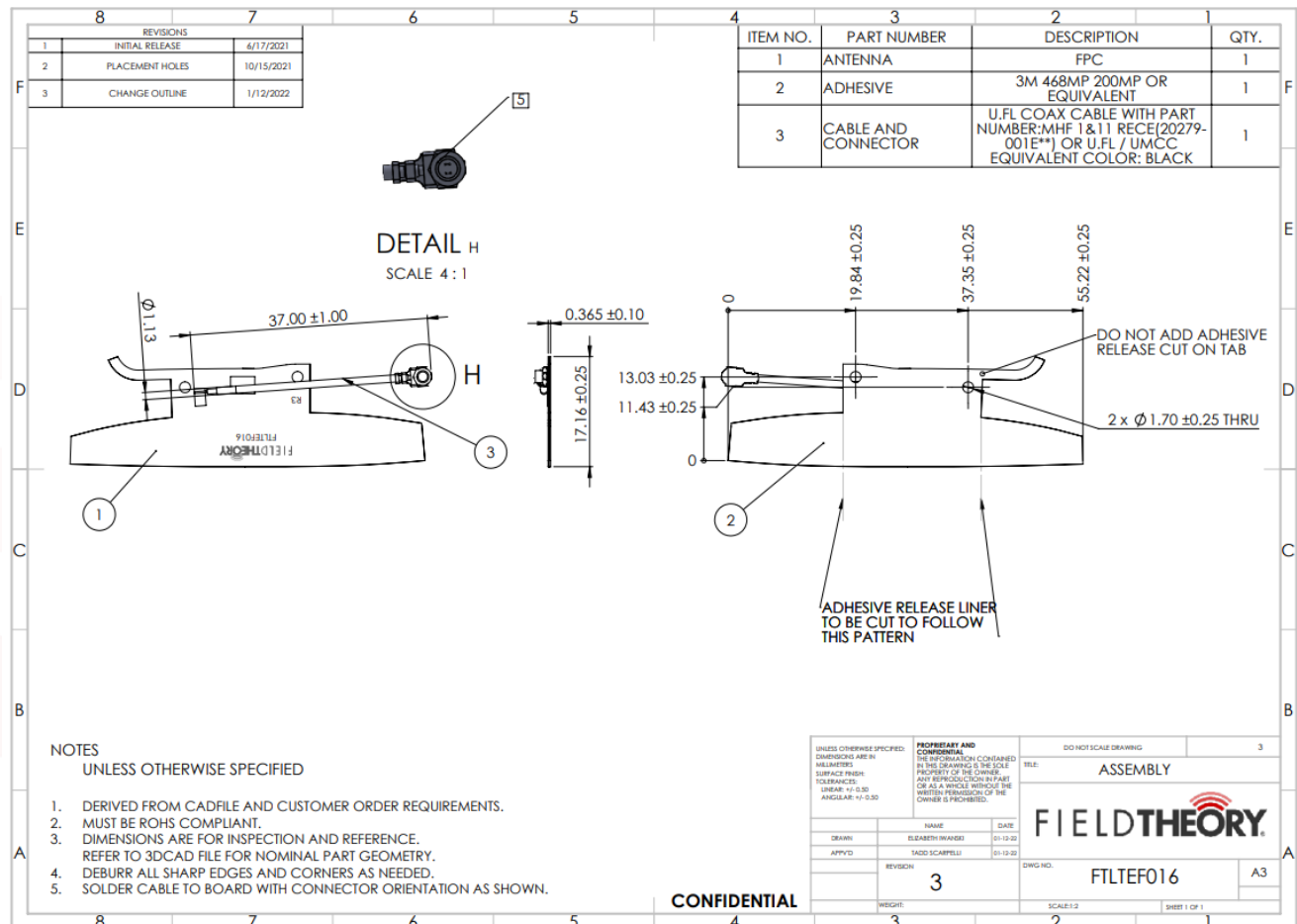
1061 High St

Mundelein, IL 60060

Email: info@fieldtheoryinc.com



Mechanical Drawing



LTE Antenna with Cable