

FCC SAR Test Report

Applicant : Teguar Corporation

Address : 2920 Whitehall Park Drive Charlotte, NC,
Charlotte, North Carolina, United States,
28273

Product Name : Rugged Tablet

Report Date : Nov. 12, 2024

Shenzhen Anbotek Compliance Laboratory Limited



Shenzhen Anbotek Compliance Laboratory Limited

Address: Sogood Industrial Zone Laboratory & 1/F. of Building D, Sogood Science and Technology Park,
Sanwei Community, Hangcheng Subdistrict, Bao'an District, Shenzhen, Guangdong, China
Tel:(86)0755-26066440 Email:service@anbotek.com



Hotline
400-003-0500
www.anbotek.com



Contents

| | |
|--|----|
| 1. Statement of Compliance | 6 |
| 2. General Information | 7 |
| 2.1. Client Information | 7 |
| 2.2. Description of Equipment Under Test (EUT) | 7 |
| 2.3. Device Category and SAR Limits | 8 |
| 2.4. Applied Standard | 8 |
| 2.5. Environment of Test Site | 8 |
| 2.6. Test Configuration | 9 |
| 3. Specific Absorption Rate (SAR) | 10 |
| 3.1. Introduction | 10 |
| 3.2. SAR Definition | 10 |
| 4. SAR Measurement System | 11 |
| 4.1. E-Field Probe | 11 |
| 4.2. Data Acquisition Electronics (DAE) | 12 |
| 4.3. Robot | 13 |
| 4.4. Measurement Server | 13 |
| 4.5. Phantom | 14 |
| 4.6. Device Holder | 15 |
| 4.7. Data Storage and Evaluation | 15 |
| 5. Test Equipment List | 18 |
| 6. Tissue Simulating Liquids | 19 |
| 7. System Verification Procedures | 21 |
| 8. EUT Testing Position | 23 |
| 8.1. Body Position | 23 |
| 9. Measurement Procedures | 24 |
| 9.1. Spatial Peak SAR Evaluation | 24 |
| 9.2. Power Reference Measurement | 25 |
| 9.3. Area Scan Procedures | 25 |
| 9.4. Zoom Scan Procedures | 26 |
| 9.5. Volume Scan Procedures | 27 |
| 9.6. Power Drift Monitoring | 27 |
| 10. Conducted Power | 28 |
| 11. Antenna Location | 30 |
| 12. SAR Test Results Summary | 34 |
| 12.1. Body-worn SAR Results | 35 |
| 13. Simultaneous Transmission Analysis | 36 |
| 14. Measurement Uncertainty | 37 |
| Appendix A. EUT Photos and Test Setup Photos | 39 |
| Appendix B. Plots of SAR System Check | 40 |
| Appendix C. Plots of SAR Test Data | 44 |



Appendix A. DASY System Calibration Certificate48

Shenzhen Anbotek Compliance Laboratory Limited

Address: Sogood Industrial Zone Laboratory & 1/F. of Building D, Sogood Science and Technology Park,
Sanwei Community, Hangcheng Subdistrict, Bao'an District, Shenzhen, Guangdong, China
Tel:(86)0755-26066440 Email:service@anbotek.com



Hotline
400-003-0500
www.anbotek.com



TEST REPORT

Applicant : Teguar Corporation
Manufacturer : Teguar Corporation
Product Name : Rugged Tablet
Model No. : TRT-A5780-10
Trade Mark : Teguar
Rating(s) : Max power 18W, Max 9V/2A

**Test Standard(s) : IEC/IEEE 62209-1528:2020; FCC 47 CFR Part 2.1093;
ANSI/IEEE C95.1:2019; Reference FCC KDB 447498;
KDB 248227; KDB 616217;**

The device described above is tested by Shenzhen Anbotek Compliance Laboratory Limited to determine the maximum emission levels emanating from the device and the severe levels of the device can endure and its performance criterion. The measurement results are contained in this test report and Shenzhen Anbotek Compliance Laboratory Limited is assumed full of responsibility for the accuracy and completeness of these measurements. Also, this report shows that the EUT (Equipment Under Test) is technically compliant with the IEC/IEEE 62209-1528:2020, FCC 47 CFR Part 2.1093, IEEE Std C95.1-2019 requirements.

This report applies to above tested sample only and shall not be reproduced in part without written approval of Shenzhen Anbotek Compliance Laboratory Limited.

Date of Receipt

Spet. 25, 2024

Date of Test

Spet. 25, 2024 to Oct. 11, 2024

Prepared By

Ella Liang

(Ella Liang)

Test Engineer

Joker Huang

(Joker Huang)

Approved & Authorized Signer

Kingkong Jin

(kingkong Jin)




Version

| Version No. | Date | Description |
|-------------|---------------|-------------|
| R00 | Nov. 08, 2024 | Original |
| | | |
| | | |

Shenzhen Anbotek Compliance Laboratory Limited

Address: Sogood Industrial Zone Laboratory & 1/F. of Building D, Sogood Science and Technology Park,
Sanwei Community, Hangcheng Subdistrict, Bao'an District, Shenzhen, Guangdong, China
Tel:(86)0755-26066440 Email:service@anbotek.com

 Hotline
400-003-0500
www.anbotek.com



1. Statement of Compliance

<Highest SAR Summary>

This device is in compliance with Specific Absorption Rate (SAR) for general population/uncontrolled exposure limits (1.6 W/kg) specified in FCC 47 CFR part 2.1093 and IEEE Std C95.1-2019, and had been tested in accordance with the measurement methods and procedures specified in IEC/IEEE 62209-1528:2020. The maximum results of Specific Absorption Rate (SAR) found during testing are as follows.

<Highest SAR Summary>

| Frequency Band | Highest Reported 1g-SAR(W/Kg) | SAR Test Limit (W/Kg) |
|--------------------|-------------------------------|--------------------------|
| | Body-worn (0mm) | |
| WLAN2.4G | 0.399 | 1.6 |
| WLAN5.2G | 0.369 | |
| WLAN5.8G | 0.474 | |
| Test Result | PASS | |

This device is in compliance with Specific Absorption Rate (SAR) for general population/uncontrolled exposure limits (1.6 W/kg) specified in FCC 47 CFR part 2.1093 and IEEE Std C95.1-2019, and had been tested in accordance with the measurement methods and procedures specified in IEC/IEEE 62209-1528:2020.



2. General Information

2.1. Client Information

| | | |
|--------------|---|--|
| Applicant | : | Teguar Corporation |
| Address | : | 2920 Whitehall Park Drive Charlotte, NC, Charlotte, North Carolina, United States, 28273 |
| Manufacturer | : | Teguar Corporation |
| Address | : | 2920 Whitehall Park Drive Charlotte, NC, Charlotte, North Carolina, United States, 28273 |
| Factory | : | Inventec Corporation |
| Address | : | No.349.Sec.2. Renhe Rd. DaDist, Taoyuan City 335, Taiwan |

2.2. Description of Equipment Under Test (EUT)

| | | |
|--------------------|---|---|
| Product Name | : | Rugged Tablet |
| Model No. | : | TRT-A5780-10 |
| Trade Mark | : | Teguar |
| Test Power Supply | : | Max power 18W, Max 9V/2A |
| Test Sample No. | : | 1-2-1(Engineering Sample) |
| Tx Frequency | : | 2.4G WIFI: 2412-2462MHz 5.2G WIFI: 5180-5240MHz 5.8G WIFI: 5745-5825MHz |
| Type of Modulation | : | 2.4G WIFI: CCK, DQPSK, DBPSK,BPSK, QPSK, 16QAM, 64QAM, 256QAM,1024QAM 5G WIFI: BPSK, QPSK, 16QAM, 64QAM, 256QAM,1024QAM |
| Category of device | : | Portable device |

Remark:

The above DUT's information was declared by manufacturer. Please refer to the specifications or user's manual for more detailed description.



2.3. Device Category and SAR Limits

This device belongs to portable device category because its radiating structure is allowed to be used within 20 centimeters of the body of the user. Limit for General Population/Uncontrolled exposure should be applied for this device, it is 1.6 W/kg as averaged over any 1 gram of tissue.

2.4. Applied Standard

The Specific Absorption Rate (SAR) testing specification, method, and procedure for this device is in accordance with the following standards:

- FCC 47 CFR Part 2.1093
- IEEE Std C95.1-2019
- IEC/IEEE 62209-1528:2020
- KDB 865664 D01 SAR Measurement 100 MHz to 6 GHz v01r04
- KDB 865664 D02 RF Exposure Reporting v01r02
- KDB 447498 D01 General RF Exposure Guidance v06
- KDB 248227 D01 802.11 Wi-Fi SAR v02r02

2.5. Environment of Test Site

| Items | Required | Actual |
|------------------|----------|--------|
| Temperature (°C) | 18-25 | 22~23 |
| Humidity (%RH) | 30-70 | 55~65 |



2.6. Test Configuration

The device was controlled by using a base station emulator. Communication between the device and the emulator was established by air link. The distance between the EUT and the antenna of the emulator is larger than 50 cm and the output power radiated from the emulator antenna is at least 30 dB smaller than the output power of EUT. The EUT was set from the emulator to radiate maximum output power during all tests. For WLAN SAR testing, WLAN engineering testing software installed on the EUT can provide continuous transmitting RF signal.



3. Specific Absorption Rate (SAR)

3.1. Introduction

SAR is related to the rate at which energy is absorbed per unit mass in an object exposed to a radio field. The SAR distribution in a biological body is complicated and is usually carried out by experimental techniques or numerical modeling. The standard recommends limits for two tiers of groups, occupational/controlled and general population/uncontrolled, based on a person's awareness and ability to exercise control over his or her exposure. In general, occupational/controlled exposure limits are higher than the limits for general population/uncontrolled.

3.2. SAR Definition

The SAR definition is the time derivative (rate) of the incremental energy (dW) absorbed by (dissipated in) an incremental mass (dm) contained in a volume element (dv) of a given density (ρ). The equation description is as below:

$$SAR = \frac{d}{dt} \left(\frac{dW}{dm} \right) = \frac{d}{dt} \left(\frac{dW}{\rho dv} \right)$$

SAR is expressed in units of Watts per kilogram (W/kg)

SAR measurement can be either related to the temperature elevation in tissue by

$$SAR = C \left(\frac{\delta T}{\delta t} \right)$$

Where: C is the specific heat capacity, δT is the temperature rise and δt is the exposure duration, or related to the electrical field in the tissue by

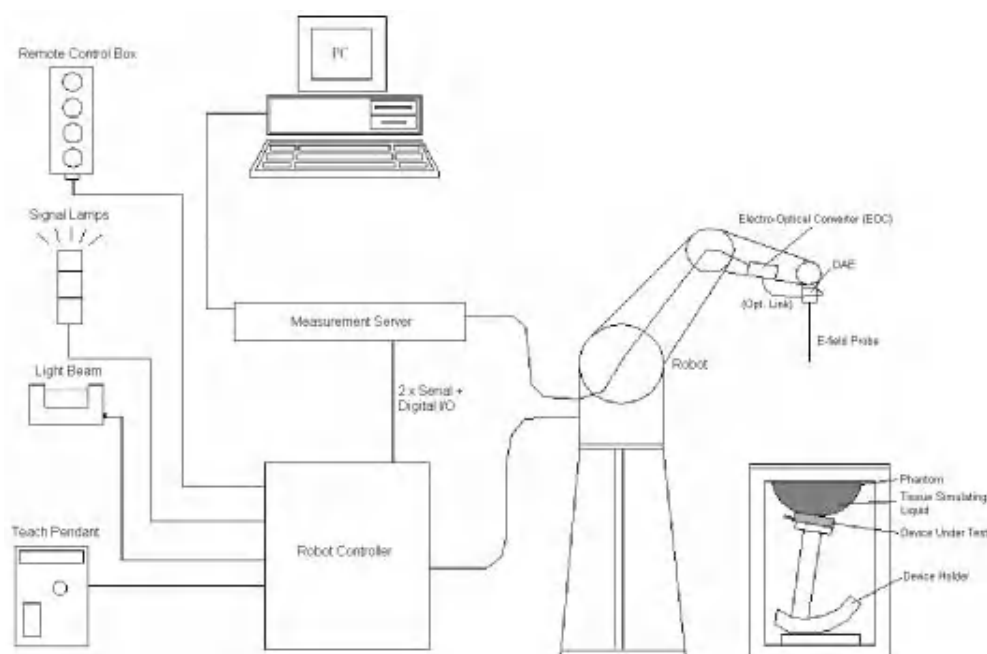
$$SAR = \frac{\sigma |E|^2}{\rho}$$

Where: σ is the conductivity of the tissue, ρ is the mass density of the tissue and E is the RMS electrical field strength.

However for evaluating SAR of low power transmitter, electrical field measurement is typically applied.



4. SAR Measurement System



DASY System Configurations

The DASYsystem for performance compliance tests is illustrated above graphically. This system consists of the following items:

- A standard high precision 6-axis robot with controller, a teach pendant and software
- A data acquisition electronic (DAE) attached to the robot arm extension
- A dosimetric probe equipped with an optical surface detector system
- The electro-optical converter (EOC) performs the conversion between optical and electrical signals
- A measurement server performs the time critical tasks such as signal filtering, control of the robot operation and fast movement interrupts.
- A probe alignment unit which improves the accuracy of the probe positioning
- A computer operating Windows XP
- DASY software
- Remote control with teach pendant and additional circuitry for robot safety such as warning lamps, etc.
- The SAM twin phantom
- A device holder
- Tissue simulating liquid
- Dipole for evaluating the proper functioning of the system

components are described in details in the following sub-sections.

4.1. E-Field Probe


The SAR measurement is conducted with the dosimetric probe (manufactured by SPEAG).The Shenzhen Anbotek Compliance Laboratory Limited



probe is specially designed and calibrated for use in liquid with high permittivity. The dosimetric probe has special calibration in liquid at different frequency. This probe has a built in optical surface detection system to prevent from collision with phantom.

➤ **E-Field Probe Specification**

<EX3DV4 Probe>

| | | |
|----------------------|---|---|
| Construction | Symmetrical design with triangular core Built-in shielding against static charges PEEK enclosure material (resistant to organic solvents, e.g., DGBE) |  Photo of EX3DV4 |
| Frequency | 10 MHz to 6 GHz; Linearity: ± 0.2 dB | |
| Directivity | ± 0.3 dB in HSL (rotation around probe axis) ± 0.5 dB in tissue material (rotation normal to probe axis) | |
| Dynamic Range | 10 μ W/g to 100 W/kg; Linearity: ± 0.2 dB (noise: typically < 1 μ W/g) | |
| Dimensions | Overall length: 330 mm (Tip: 20 mm) Tip diameter: 2.5 mm (Body: 12 mm) Typical distance from probe tip to dipole centers: 1 mm | |

➤ **E-Field Probe Calibration**

Each probe needs to be calibrated according to a dosimetric assessment procedure with accuracy better than $\pm 10\%$. The spherical isotropy shall be evaluated and within ± 0.25 dB. The sensitivity parameters (NormX, NormY, and NormZ), the diode compression parameter (DCP) and the conversion factor (ConvF) of the probe are tested. The calibration data can be referred to appendix C of this report.

4.2. Data Acquisition Electronics (DAE)

The data acquisition electronics (DAE) consists of a highly sensitive electrometer-grade preamplifier with auto-zeroing, a channel and gain-switching multiplexer, a fast 16 bit AD-converter and a command decoder and control logic unit. Transmission to the measurement server is accomplished through an optical downlink for data and status information as well as an optical uplink for commands and the clock.

The input impedance of the DAE is 200M Ω ; the inputs are symmetrical and floating. Common mode rejection is above 80dB.





Photo of DAE

4.3. Robot

The SPEAG DASY system uses the high precision robots (DASY5: TX60XL) type from Stäubli SA (France). For the 6-axis controllersystem, the robot controller version (DASY5: CS8c) from Stäubli is used. The Stäublirobot series have many features that are important for our application:

- High precision (repeatability ± 0.035 mm)
- High reliability (industrial design)
- Jerk-free straight movements
- Low ELF interference (the closed metallic construction shields against motor control fields)



Photo of DASY5

4.4. Measurement Server

The measurement server is based on a PC/104 CPU board with CPU (DASY5: 400 MHz, Intel Celeron), chipdisk (DASY5: 128 MB), RAM (DASY5: 128 MB). The necessary circuits for
Shenzhen Anbotek Compliance Laboratory Limited



communication with the DAE electronic box, as well as the 16 bit AD converter system for optical detection and digital I/O interface are contained on the DASY I/O board, which is directly connected to the PC/104 bus of the CPU board.

The measurement server performs all the real-time data evaluation for field measurements and surface detection, controls robot movements and handles safety operations.



Photo of Server for DASY5

4.5. Phantom

<SAM Twin Phantom>

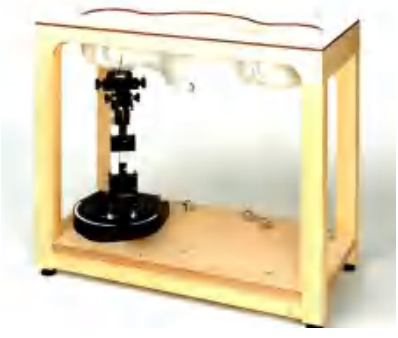

| | | |
|--------------------------|--|---|
| Shell Thickness | 2 ± 0.2 mm; Center ear point: 6 ± 0.2 mm |  |
| Filling Volume | Approx. 25 liters | |
| Dimensions | Length: 1000 mm; Width: 500 mm; Height: adjustable feet | |
| Measurement Areas | Left Hand, Right Hand, Flat Phantom | |

Photo of SAM Phantom

The bottom plate contains three pair of bolts for locking the device holder. The device holder positions are adjusted to the standard measurement positions in the three sections. A white cover is provided to tap the phantom during off-periods to prevent water evaporation and changes in the liquid parameters. On the phantom top, three reference markers are provided to identify the phantom position with respect to the robot.

<ELI4 Phantom>

| | | |
|------------------------|---------------------------|--|
| Shell Thickness | 2 ± 0.2 mm (sagging: <1%) |  |
| Filling Volume | Approx. 30 liters | |



| | | |
|-------------------|---|------------------------------|
| Dimensions | Major ellipse axis: 600 mm Minor axis:400 mm | Photo of ELI4 Phantom |
|-------------------|---|------------------------------|

The ELI4 phantom is intended for compliance testing of handheld and body-mounted wireless devices in the frequency range of 30 MHz to 6 GHz. ELI4 is fully compatible with standard and all known tissue simulating liquids.

4.6. Device Holder

The SAR in the phantom is approximately inversely proportional to the square of the distance between the source and the liquid surface. For a source at 5 mm distance, a positioning uncertainty of $\pm 0.5\text{mm}$ would produce a SAR uncertainty of $\pm 20\%$. Accurate device positioning is therefore crucial for accurate and repeatable measurements. The positions in which the devices must be measured are defined by the standards.

The DASY device holder is designed to cope with different positions given in the standard. It has two scales for the device rotation (with respect to the body axis) and the device inclination (with respect to the line between the ear reference points). The rotation center for both scales is the ear reference point (ERP). Thus the device needs no repositioning when changing the angles.

The DASY device holder is constructed of low-loss POM material having the following dielectric parameters: relative permittivity $\epsilon = 3$ and loss tangent $\delta = 0.02$. The amount of dielectric material has been reduced in the closest vicinity of the device, since measurements have suggested that the influence of the clamp on the test results could thus be lowered.



Device Holder

4.7. Data Storage and Evaluation

➤ Data Storage

The DASY software stores the assessed data from the data acquisition electronics as raw data (in microvolt readings from the probe sensors), together with all the necessary software parameters for the data evaluation (probe calibration data, liquid parameters and device

Shenzhen Anbotek Compliance Laboratory Limited



frequency and modulation data) in measurement files. The post-processing software evaluates the desired unit and format for output each time the data is visualized or exported. This allows verification of the complete software setup even after the measurement and allows correction of erroneous parameter settings. For example, if a measurement has been performed with an incorrect crest factor parameter in the device setup, the parameter can be corrected afterwards and the data can be reevaluated.

The measured data can be visualized or exported in different units or formats, depending on the selected probe type (e.g., [V/m], [A/m], [W/kg]). Some of these units are not available in certain situations or give meaningless results, e.g., a SAR-output in a non-loss media, will always be zero. Raw data can also be exported to perform the evaluation with other software packages.

➤ Data Evaluation

The DASY post-processing software (SEMCAD) automatically executes the following procedures to calculate the field units from the microvolt readings at the probe connector. The parameters used in the evaluation are stored in the configuration modules of the software:

| | | |
|---------------------------|---------------------------|---|
| Probe parameters: | - Sensitivity | Norm _i , a _{i0} , a _{i1} , a _{i2} |
| | - Conversion factor | ConvF _i |
| | - Diode compression point | dcp _i |
| Device parameters: | - Frequency | f |
| | - Crest factor | cf |
| Media parameters: | - Conductivity | σ |
| | - Density | ρ |

These parameters must be set correctly in the software. They can be found in the component documents or they can be imported into the software from the configuration files issued for the DASY components. In the direct measuring mode of the multi-meter option, the parameters of the actual system setup are used. In the scan visualization and export modes, the parameters stored in the corresponding document files are used.

The first step of the evaluation is a linearization of the filtered input signal to account for the compression characteristics of the detector diode. The compensation depends on the input signal, the diode type and the DC-transmission factor from the diode to the evaluation electronics. If the exciting field is pulsed, the crest factor of the signal must be known to correctly compensate for peak power.

The formula for each channel can be given as:

$$V_i = U_i + U_i^2 \cdot \frac{cf}{dcp_i}$$

with V_i = compensated signal of channel i, (i = x, y, z)

U_i = input signal of channel i, (i = x, y, z)



cf = crest factor of exciting field (DASY parameter)

dcp_i = diode compression point (DASY parameter)

From the compensated input signals, the primary field data for each channel can be evaluated:

$$\text{E-field Probes: } E_i = \sqrt{\frac{V_i}{\text{Norm}_i \cdot \text{ConvF}}}$$

$$\text{H-field Probes: } H_i = \sqrt{V_i} \cdot \frac{a_{i0} + a_{i1}f + a_{i2}f^2}{f}$$

with V_i = compensated signal of channel i, (i= x, y, z)

Norm_i= sensor sensitivity of channel i, (i= x, y, z), $\mu\text{V}/(\text{V/m})^2$ for E-field Probes

ConvF= sensitivity enhancement in solution

a_{ij}= sensor sensitivity factors for H-field probes

f = carrier frequency [GHz]

E_i= electric field strength of channel i in V/m

H_i= magnetic field strength of channel i in A/m

The RSS value of the field components gives the total field strength (Hermitian magnitude):

$$E_{\text{tot}} = \sqrt{E_x^2 + E_y^2 + E_z^2}$$

The primary field data are used to calculate the derived field units.

$$\text{SAR} = E_{\text{tot}}^2 \cdot \frac{\sigma}{\rho \cdot 1000}$$

with SAR = local specific absorption rate in W/kg

E_{tot}= total field strength in V/m

σ = conductivity in [mho/m] or [Siemens/m]

ρ = equivalent tissue density in g/cm³

Note that the density is set to 1, to account for actual head tissue density rather than the density of the tissue simulating liquid.



5. Test Equipment List

| Manufacturer | Name of Equipment | Type/Model | Serial Number | Calibration | |
|--------------|-------------------------------|----------------|---------------|---------------|---------------|
| | | | | Last Cal. | Due Date |
| SPEAG | 2450MHz System Validation Kit | D2450V2 | 910 | Jun. 11,2024 | Jun. 10,2027 |
| SPEAG | 5GHz System Validation Kit | D5GHzV2 | 1160 | Oct. 02, 2024 | Oct. 01, 2027 |
| SPEAG | Data Acquisition Electronics | DAE4 | 387 | Sept.02,2024 | Sept.01,2025 |
| SPEAG | Dosimetric E-Field Probe | EX3DV4 | 7396 | May 06,2024 | May 05,2025 |
| Agilent | ENA Series Network Analyzer | E5071C | MY46317418 | Oct.26, 2023 | Oct.25, 2024 |
| SPEAG | DAK | DAK-3.5 | 1226 | NCR | NCR |
| SPEAG | SAM Twin Phantom | QD000P40CD | 1802 | NCR | NCR |
| SPEAG | ELI Phantom | QDOVA004AA | 2058 | NCR | NCR |
| AR | Amplifier | ZHL-42W | QA1118004 | NCR | NCR |
| Agilent | Power Meter | N1914A | MY50001102 | Oct.26, 2023 | Oct.25, 2024 |
| Agilent | Power Sensor | E9323A | US40410647 | Jan. 23, 2024 | Jan. 22, 2025 |
| Agilent | Power Sensor | E9323A | MY53100007 | Jan. 23, 2024 | Jan. 22, 2025 |
| CDKMV | Attenuator | 6610 | 6610-1 | Oct.20, 2024 | Oct.19, 2025 |
| CDKMV | Attenuator | 6606 | 6606-1 | Oct.20, 2024 | Oct.19, 2025 |
| Agilent | Spectrum Analyzer | N9020A | MY51170037 | Oct.26, 2023 | Oct.25, 2024 |
| Agilent | Signal Generation | N5182A | MY48180656 | Oct.26, 2023 | Oct.25, 2024 |
| Worken | Directional Coupler | 0110A05601O-10 | COM5BNW1A2 | Oct.26, 2023 | Oct.25, 2024 |

Note:

1. The calibration certificate of DASY can be referred to appendix C of this report.
2. The dipole calibration interval can be extended to 3 years with justification. The dipoles are also not physically damaged, or repaired during the interval.
3. The Insertion Loss calibration of Dual Directional Coupler and Attenuator were characterized via the network analyzer and compensated during system check.
4. The dielectric probe kit was calibrated via the network analyzer, with the specified procedure (calibrated in pure water) and calibration kit (standard) short circuit, before the dielectric measurement. The specific procedure and calibration kit are provided by Agilent.
5. In system check we need to monitor the level on the power meter, and adjust the power amplifier level to have precise power level to the dipole; the measured SAR will be normalized to 1W input power according to the ratio of 1W to the input power to the dipole. For system check, the calibration of the power amplifier is deemed not critically required for correct measurement; the power meter is critical and we do have calibration for it.



6. Tissue Simulating Liquids

For the measurement of the field distribution inside the SAM phantom with DASY, the phantom must be filled with around 25 liters of homogeneous body tissue simulating liquid. For head SAR testing, the liquid height from the ear reference point (ERP) of the phantom to the liquid top surface is larger than 15 cm, which is shown in Fig. 6.1. For body SAR testing, the liquid height from the center of the flat phantom to the liquid top surface is larger than 15 cm, which is shown as followed:



Photo of Liquid Height for Head SAR

The following table gives the recipes for tissue simulating liquid.

| Frequency (MHz) | Water (%) | Sugar (%) | Cellulose (%) | Salt (%) | Preventol (%) | DGBE (%) | Conductivity (σ) | Permittivity (ϵ_r) |
|--------------------|--------------|--------------|------------------|-------------|------------------|-------------|------------------------------|----------------------------------|
| For Head | | | | | | | | |
| 2450 | 55.0 | 0 | 0 | 0 | 0 | 45.0 | 1.80 | 39.2 |
| 5200 | 65.5 | 0 | 17.2 | 0 | 17.3 | 0 | 4.66 | 36.0 |
| 5800 | 65.4 | 0 | 17.3 | 0 | 17.3 | 0 | 5.27 | 35.3 |

The following table shows the measuring results for simulating liquid.

Shenzhen Anbotek Compliance Laboratory Limited



| Measured Frequency (MHz) | Target Tissue | | Measured Tissue | | | | Liquid Temp. | Test Data |
|--------------------------|---------------|----------|-----------------|----------|----------|----------|--------------|------------|
| | ϵ_r | σ | ϵ_r | Dev. (%) | σ | Dev. (%) | | |
| 2450 | 39.2 | 1.80 | 39.08 | -0.31 | 1.85 | 2.78 | 22.7 | 10/08/2024 |
| 2412 | 39.30 | 1.78 | 39.12 | -0.46 | 1.81 | 1.69 | 22.8 | 10/08/2024 |
| 2437 | 39.26 | 1.81 | 39.03 | -0.59 | 1.89 | 4.42 | 22.8 | 10/08/2024 |
| 2462 | 39.22 | 1.83 | 38.94 | -0.71 | 1.87 | 2.19 | 22.8 | 10/08/2024 |
| 2402 | 39.32 | 1.77 | 39.05 | -0.69 | 1.82 | 2.82 | 22.8 | 10/08/2024 |
| 2441 | 39.25 | 1.81 | 39.08 | -0.43 | 1.86 | 2.76 | 22.8 | 10/08/2024 |
| 2480 | 39.19 | 1.85 | 38.86 | -0.84 | 1.89 | 2.16 | 22.8 | 10/08/2024 |
| 5200 | 36.0 | 4.66 | 36.21 | 0.58 | 4.71 | 1.07 | 22.5 | 10/08/2024 |
| 5180 | 36.00 | 4.63 | 36.15 | 0.42 | 4.70 | 1.51 | 22.5 | 10/08/2024 |
| 5240 | 35.93 | 4.70 | 35.69 | -0.67 | 4.78 | 1.70 | 22.5 | 10/08/2024 |
| 5800 | 35.3 | 5.27 | 35.05 | -0.71 | 5.35 | 1.52 | 22.4 | 10/08/2024 |
| 5745 | 35.36 | 5.21 | 35.08 | -0.79 | 5.29 | 1.54 | 22.4 | 10/08/2024 |
| 5785 | 35.32 | 5.25 | 35.15 | -0.48 | 5.33 | 1.52 | 22.4 | 10/08/2024 |
| 5825 | 35.29 | 5.30 | 35.09 | -0.57 | 5.37 | 1.32 | 22.4 | 10/08/2024 |

Shenzhen Anbotek Compliance Laboratory Limited

Address: Sogood Industrial Zone Laboratory & 1/F. of Building D, Sogood Science and Technology Park, Sanwei Community, Hangcheng Subdistrict, Bao'an District, Shenzhen, Guangdong, China
Tel:(86)0755-26066440 Email:service@anbotek.com



Hotline
400-003-0500
www.anbotek.com



7. System Verification Procedures

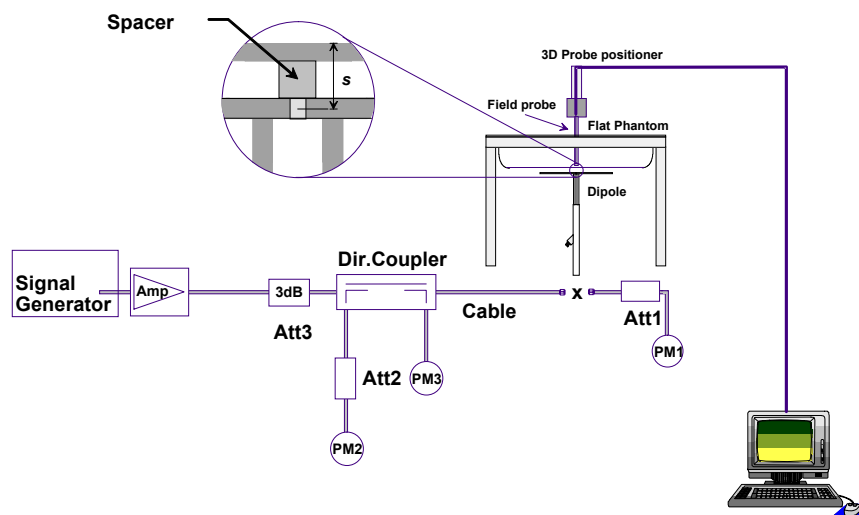
Each DASY system is equipped with one or more system validation kits. These units, together with the predefined measurement procedures within the DASY software, enable the user to conduct the system performance check and system validation. System validation kit includes a dipole, tripod holder to fix it underneath the flat phantom and a corresponding distance holder.

➤ Purpose of System Performance check

The system performance check verifies that the system operates within its specifications. System and operator errors can be detected and corrected. It is recommended that the system performance check be performed prior to any usage of the system in order to guarantee reproducible results. The system performance check uses normal SAR measurements in a simplified setup with a well characterized source. This setup was selected to give a high sensitivity to all parameters that might fail or vary over time. The system check does not intend to replace the calibration of the components, but indicates situations where the system uncertainty is exceeded due to drift or failure.

➤ System Setup

In the simplified setup for system evaluation, the EUT is replaced by a calibrated dipole and the power source is replaced by a continuous wave that comes from a signal generator. The calibrated dipole must be placed beneath the flat phantom section of the SAM twin phantom with the correct distance holder. The distance holder should touch the phantom surface with a light pressure at the reference marking and be oriented parallel to the long side of the phantom. The equipment setup is shown below:



System Setup for System Evaluation



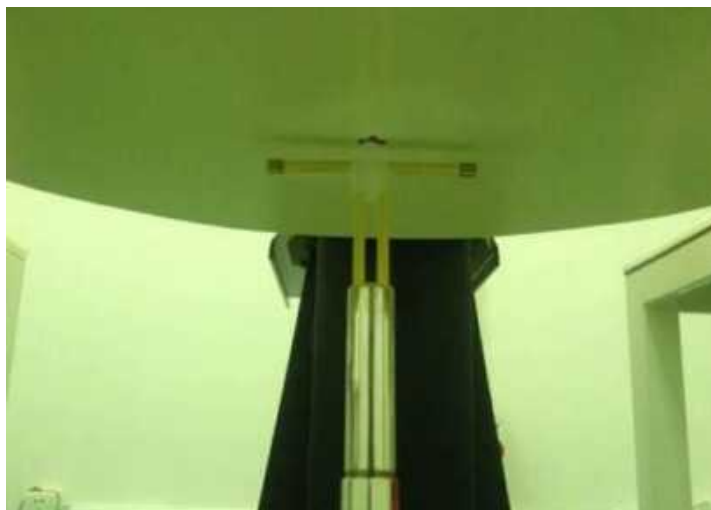


Photo of Dipole Setup

➤ **Validation Results**

Comparing to the original SAR value provided by SPEAG, the verification data should be within its specification of 10%. The table below shows the target SAR and measured SAR after normalized to 1W input power. It indicates that the system performance check can meet the variation criterion and the plots can be referred to Appendix A of this report.

| Date | Frequency (MHz) | Power fed onto reference dipole (mW) | Targeted SAR (W/kg) | Measured SAR (W/kg) | Normalized SAR (W/kg) | Deviation (%) |
|------------|-----------------|--------------------------------------|---------------------|---------------------|-----------------------|---------------|
| 10/08/2024 | 2450 | 250 | 52.4 | 12.95 | 51.8 | -1.15 |
| 10/08/2024 | 5200 | 100 | 77.8 | 7.63 | 76.30 | -1.93 |
| 10/08/2024 | 5800 | 100 | 78.3 | 7.95 | 79.50 | 1.53 |

Target and Measurement SAR after Normalized

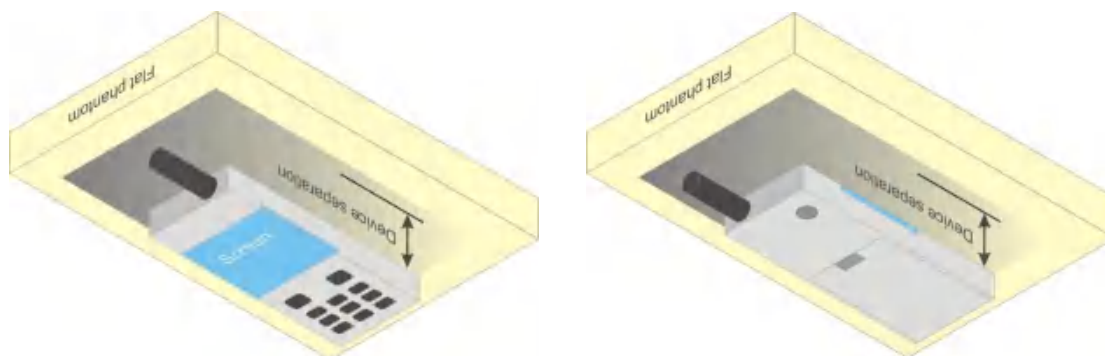


8. EUT Testing Position

8.1. Body Position

Body-worn operating configurations are tested with the belt-clips and holsters attached to the device and positioned against a flat phantom in a normal use configuration. Per KDB 648474 D04, body-worn accessory exposure is typically related to voice mode operations when handsets are carried in body-worn accessories. The body-worn accessory procedures in FCC KDB 447498 D01 v06, 2015 should be used to test for body-worn accessory SAR compliance, without a headset connected to it. This enables the test results for such configuration to be compatible with that required for hotspot mode when the body-worn accessory test separation distance is greater than or equal to that required for hotspot mode, when applicable. When the reported SAR for body-worn accessory, measured without a headset connected to the handset is $< 1.2 \text{ W/kg}$, the highest reported SAR configuration for that wireless mode and frequency band should be repeated for that body-worn accessory with a handset attached to the handset.

Accessories for body-worn operation configurations are divided into two categories: those that do not contain metallic components and those that do contain metallic components and those that do contain metallic components. When multiple accessories that do not contain metallic components are supplied with the device, the device is tested with only the accessory that dictates the closest spacing to the body. Then multiple accessories that contain metallic components are test with the device with each accessory. If multiple accessories share an identical metallic component (i.e. the same metallic belt-clip used with different holsters with no other metallic components) only the accessory that dictates the closest spacing to the body is tested.



Body Worn Position



9. Measurement Procedures

The measurement procedures are as follows:

- (a) Use base station simulator (if applicable) or engineering software to transmit RF power continuously (continuous Tx) in the middle channel.
- (b) Keep EUT to radiate maximum output power or 100% duty factor (if applicable)
- (c) Measure output power through RF cable and power meter.
- (d) Place the EUT in the positions as setup photos demonstrates.
- (e) Set scan area, grid size and other setting on the DASY software.
- (f) Measure SAR transmitting at the middle channel for all applicable exposure positions.
- (g) Identify the exposure position and device configuration resulting the highest SAR
- (h) Measure SAR at the lowest and highest channels at the worst exposure position and device configuration if applicable.

According to the test standard, the recommended procedure for assessing the peak spatial-average SAR value consists of the following steps:

- (a) Power reference measurement
- (b) Area scan
- (c) Zoom scan
- (d) Power drift measurement

9.1. Spatial Peak SAR Evaluation

The procedure for spatial peak SAR evaluation has been implemented according to the test standard. It can be conducted for 1g and 10g, as well as for user-specific masses. The DASY software includes all numerical procedures necessary to evaluate the spatial peak SAR value.

The base for the evaluation is a "cube" measurement. The measured volume must include the 1g and 10g cubes with the highest averaged SAR values. For that purpose, the center of the measured volume is aligned to the interpolated peak SAR value of a previously performed area scan.

The entire evaluation of the spatial peak values is performed within the post-processing engine (SEMCAD). The system always gives the maximum values for the 1g and 10g cubes. The algorithm to find the cube with highest averaged SAR is divided into the following stages:

- (a) Extraction of the measured data (grid and values) from the Zoom Scan
- (b) Calculation of the SAR value at every measurement point based on all stored data (A/D values and measurement parameters)
- (c) Generation of a high-resolution mesh within the measured volume
- (d) Interpolation of all measured values from the measurement grid to the high-resolution grid
- (e) Extrapolation of the entire 3-D field distribution to the phantom surface over the distance from sensor to surface
- (f) Calculation of the averaged SAR within masses of 1g and 10g



9.2. Power Reference Measurement

The Power Reference Measurement and Power Drift Measurements are for monitoring the power drift of the device under test in the batch process. The minimum distance of probe sensors to surface determines the closest measurement point to phantom surface. This distance cannot be smaller than the distance of sensor calibration points to probe tip as defined in the probe properties.

9.3. Area Scan Procedures

The area scan is used as a fast scan in two dimensions to find the area of high field values, before doing a fine measurement around the hot spot. The sophisticated interpolation routines implemented in DASY software can find the maximum found in the scanned area, within a range of the global maximum. The range (in dB) is specified in the standards for compliance testing. For example, a 2 dB range is required in IEEE standard 1528 and IEC 62209 standards, whereby 3 dB is a requirement when compliance is assessed in accordance with the ARIB standard (Japan), if only one zoom scan follows the area scan, then only the absolute maximum will be taken as reference. For cases where multiple maximums are detected, the number of zoom scans has to be increased accordingly.

Area scan parameters extracted from FCC KDB 865664 D01 SAR measurement 100 MHz to 6 GHz.

| | ≤ 3 GHz | > 3 GHz |
|--|--|--|
| Maximum distance from closest measurement point (geometric center of probe sensors) to phantom surface | 5 ± 1 mm | $\frac{1}{2} \cdot \delta \cdot \ln(2) \pm 0.5$ mm |
| Maximum probe angle from probe axis to phantom surface normal at the measurement location | $30^\circ \pm 1^\circ$ | $20^\circ \pm 1^\circ$ |
| Maximum area scan spatial resolution: Δx_{Area} , Δy_{Area} | < 2 GHz: ≤ 15 mm $2 - 3$ GHz: ≤ 12 mm | $3 - 4$ GHz: ≤ 12 mm $4 - 6$ GHz: ≤ 10 mm |
| | When the x or y dimension of the test device, in the measurement plane orientation, is smaller than the above, the measurement resolution must be \leq the corresponding x or y dimension of the test device with at least one measurement point on the test device. | |



9.4. Zoom Scan Procedures

Zoom scans are used to assess the peak spatial SAR values within a cubic averaging volume containing 1 gram and 10gram of simulated tissue. The zoom scan measures points (refer to table below) within a cube whose base faces are centered on the maxima found in a preceding area scan job within the same procedure. When the measurement is done, the zoom scan evaluates the averaged SAR for 1 gram and 10 gram and displays these values next to the job's label.

Zoom scan parameters extracted from FCC KDB 865664 D01 SAR measurement 100 MHz to 6 GHz.

| | | | ≤ 3 GHz | > 3 GHz |
|---|------------------------------------|--|--|---|
| Maximum zoom scan spatial resolution: $\Delta x_{Zoom}, \Delta y_{Zoom}$ | | | ≤ 2 GHz: ≤ 8 mm 2 – 3 GHz: ≤ 5 mm* | 3 – 4 GHz: ≤ 5 mm* 4 – 6 GHz: ≤ 4 mm* |
| Maximum zoom scan spatial resolution, normal to phantom surface | uniform grid: $\Delta z_{Zoom}(n)$ | | ≤ 5 mm | 3 – 4 GHz: ≤ 4 mm 4 – 5 GHz: ≤ 3 mm 5 – 6 GHz: ≤ 2 mm |
| | graded grid | $\Delta z_{Zoom}(1)$: between 1 st two points closest to phantom surface | ≤ 4 mm | 3 – 4 GHz: ≤ 3 mm 4 – 5 GHz: ≤ 2.5 mm 5 – 6 GHz: ≤ 2 mm |
| | | $\Delta z_{Zoom}(n>1)$: between subsequent points | $\leq 1.5 \cdot \Delta z_{Zoom}(n+1)$ | |
| Minimum zoom scan volume | x, y, z | | ≥ 30 mm | 3 – 4 GHz: ≥ 28 mm 4 – 5 GHz: ≥ 25 mm 5 – 6 GHz: ≥ 22 mm |
| Note: δ is the penetration depth of a plane-wave at normal incidence to the tissue medium; see draft standard IEEE P1528-2011 for details. | | | | |
| * When zoom scan is required and the <u>reported</u> SAR from the <u>area scan based 1-g SAR estimation</u> procedures of KDB 447498 is ≤ 1.4 W/kg, ≤ 8 mm, ≤ 7 mm and ≤ 5 mm zoom scan resolution may be applied, respectively, for 2 GHz to 3 GHz, 3 GHz to 4 GHz and 4 GHz to 6 GHz. | | | | |



9.5. Volume Scan Procedures

The volume scan is used for assess overlapping SAR distributions for antennas transmitting in different frequency bands. It is equivalent to an oversized zoom scan used in standalone measurements. The measurement volume will be used to enclose all the simultaneous transmitting antennas. For antennas transmitting simultaneously in different frequency bands, the volume scan is measured separately in each frequency band. In order to sum correctly to compute the 1g aggregate SAR, the EUT remain in the same test position for all measurements and all volume scan use the same spatial resolution and grid spacing. When all volume scan were completed, the software, SEMCAD postprocessor can combine and subsequently superpose these measurement data to calculating the multiband SAR.

9.6. Power Drift Monitoring

All SAR testing is under the EUT install full charged battery and transmit maximum output power. In DASY measurement software, the power reference measurement and power drift measurement procedures are used for monitoring the power drift of EUT during SAR test. Both these procedures measure the field at a specified reference position before and after the SAR testing. The software will calculate the field difference in dB. If the power drift more than 5%, the SAR will be retested.



10. Conducted Power

<WLAN 2.4GHz Conducted Power>

| Mode | Channel | Frequency (MHz) | Conducted Average Output Power(dBm) | Tune-up power(dBm) |
|-----------|---------|-----------------|-------------------------------------|--------------------|
| 802.11b | 1 | 2412 | 11.46 | 11.50 |
| | 6 | 2437 | 12.02 | 12.50 |
| | 11 | 2462 | 11.75 | 12.00 |
| 802.11g | 1 | 2412 | 11.35 | 11.50 |
| | 6 | 2437 | 11.65 | 12.00 |
| | 11 | 2462 | 11.65 | 12.00 |
| 802.11n20 | 1 | 2412 | 11.21 | 11.50 |
| | 6 | 2437 | 11.55 | 12.00 |
| | 11 | 2462 | 11.52 | 12.00 |
| 802.11n40 | 3 | 2422 | 11.68 | 12.00 |
| | 6 | 2437 | 11.72 | 12.00 |
| | 9 | 2452 | 11.62 | 12.00 |

Note:

1. Per KDB 447498 D01, the 1-g SAR test exclusion thresholds for 100 MHz to 6 GHz at *test separation distances* ≤ 50 mm are determined by:

$$[(\text{max. power of channel, including tune-up tolerance, mW}) / (\text{min. test separation distance, mm})] \cdot [\sqrt{f(\text{GHz})}] \leq 3.0 \text{ for 1-g SAR, where}$$

f(GHz) is the RF channel transmit frequency in GHz

Power and distance are rounded to the nearest mW and mm before calculation

The result is rounded to one decimal place for comparison

2. Base on the result of note1, RF exposure evaluation of 2.4G WIFI mode is required.

3. Per KDB 248227 D01, choose the highest output power channel to test SAR and determine further SAR exclusion.

4. Per KDB 248227 D01, In the 2.4 GHz band, separate SAR procedures are applied to DSSS and OFDM configurations to simplify DSSS test requirements. SAR is not required for the following 2.4 GHz OFDM conditions:

- 1) When KDB Publication 447498 SAR test exclusion applies to the OFDM configuration.
- 2) When the highest reported SAR for DSSS is adjusted by the ratio of OFDM to DSSS specified maximum output power and the adjusted SAR is ≤ 1.2 W/kg.



<WLAN 5GHz Conducted Power>

Band 1

| Mode | Channel Frequency (MHz) | Average Power output (dBm) | Tune-up power(dBm) |
|-------------|-------------------------|----------------------------|--------------------|
| 802.11a | 5180 | 12.06 | 12.50 |
| | 5200 | 12.58 | 13.00 |
| | 5240 | 12.76 | 13.00 |
| 802.11n 20 | 5180 | 12.41 | 12.50 |
| | 5200 | 11.39 | 12.00 |
| | 5240 | 12.36 | 12.50 |
| 802.11n 40 | 5190 | 12.36 | 12.50 |
| | 5230 | 12.44 | 12.50 |
| 802.11ac 20 | 5180 | 12.32 | 12.50 |
| | 5200 | 12.24 | 12.50 |
| | 5240 | 12.50 | 13.00 |
| 802.11ac 40 | 5190 | 12.00 | 12.50 |
| | 5230 | 12.16 | 12.50 |
| 802.11ac 80 | 5210 | 11.79 | 12.00 |

Band 4

| Mode | Channel Frequency (MHz) | Average Power output (dBm) | Tune-up power(dBm) |
|-------------|-------------------------|----------------------------|--------------------|
| 802.11a | 5745 | 12.24 | 12.50 |
| | 5785 | 12.61 | 13.00 |
| | 5825 | 12.85 | 13.00 |
| 802.11n 20 | 5745 | 11.91 | 12.00 |
| | 5785 | 12.35 | 12.50 |
| | 5825 | 12.60 | 13.00 |
| 802.11n 40 | 5755 | 12.04 | 12.50 |
| | 5795 | 12.50 | 13.00 |
| 802.11ac 20 | 5745 | 12.01 | 12.50 |
| | 5785 | 12.44 | 12.50 |
| | 5825 | 12.66 | 13.00 |
| 802.11ac 40 | 5755 | 11.75 | 12.00 |
| | 5795 | 12.29 | 12.50 |
| 802.11ac 80 | 5775 | 11.76 | 12.00 |

Note:

1. Per KDB 447498 D01, the 1-g SAR test exclusion thresholds for 100 MHz to 6 GHz at test separation distances ≤ 50 mm are determined by:

Shenzhen Anbotek Compliance Laboratory Limited

Address: Sogood Industrial Zone Laboratory & 1/F. of Building D, Sogood Science and Technology Park, Sanwei Community, Hangcheng Subdistrict, Bao'an District, Shenzhen, Guangdong, China
Tel:(86)0755-26066440 Email:service@anbotek.com



Hotline
400-003-0500
www.anbotek.com



$[(\text{max. power of channel, including tune-up tolerance, mW}) / (\text{min. test separation distance, mm})] \cdot [\sqrt{f(\text{GHz})}] \leq 3.0$ for 1-g SAR, where

f(GHz) is the RF channel transmit frequency in GHz

Power and distance are rounded to the nearest mW and mm before calculation

The result is rounded to one decimal place for comparison

2. Base on the result of note1, RF exposure evaluation of 2.4G/5.2G/5.3G/5.4G/5.8G WIFI mode is required.

3. Per KDB 248227 D01, choose the highest output power channel to test SAR and determine further SAR exclusion.

4. Per KDB 248227 D01, In the 2.4 GHz band, separate SAR procedures are applied to DSSS and OFDM configurations to simplify DSSS test requirements. SAR is not required for the following 2.4 GHz OFDM conditions:

1) When KDB Publication 447498 SAR test exclusion applies to the OFDM configuration.

2) When the highest reported SAR for DSSS is adjusted by the ratio of OFDM to DSSS specified maximum output power and the adjusted SAR is ≤ 1.2 W/kg.

<Bluetooth Conducted Power>

| Mode | Channel | Frequency (MHz) | Conducted Peak Power (dBm) | Conducted Average Power (dBm) | Tune-up power(dBm) |
|--------------------|---------|-----------------|----------------------------|-------------------------------|--------------------|
| BT BDR (GFSK) | 00 | 2402 | 2.17 | 1.68 | 2.00 |
| | 39 | 2441 | 2.34 | 1.94 | 2.00 |
| | 78 | 2480 | 2.72 | 1.98 | 2.00 |
| BT EDR (PI/4DQPSK) | 00 | 2402 | 1.78 | 0.67 | 1.00 |
| | 39 | 2441 | 1.75 | 1.26 | 1.50 |
| | 78 | 2480 | 2.12 | 1.54 | 2.00 |
| BT EDR (8DPSK) | 00 | 2402 | 1.56 | 0.89 | 1.00 |
| | 39 | 2441 | 1.52 | 0.87 | 1.00 |
| | 78 | 2480 | 1.69 | 1.13 | 1.50 |
| BT BLE_1M (GFSK) | 00 | 2402 | 4.10 | 3.54 | 4.00 |
| | 19 | 2440 | 3.70 | 3.21 | 3.50 |
| | 39 | 2480 | 2.26 | 2.23 | 2.50 |
| BT BLE_2M (GFSK) | 00 | 2402 | 4.03 | 3.94 | 4.00 |
| | 19 | 2440 | 3.78 | 3.21 | 3.50 |
| | 39 | 2480 | 3.88 | 2.93 | 3.00 |

Note:

Per KDB 447498 D01v05r02, the 1-g and 10-g SAR test exclusion thresholds for 100 MHz to 6 GHz at test separation distances ≤ 50 mm are determined by:

$[(\text{max. power of channel, including tune-up tolerance, mW})/(\text{min. test separation distance, mm})] \cdot [\sqrt{f(\text{GHz})}] \leq 3.0$ for 1-g SAR and ≤ 7.5 for 10-g extremity SAR

f(GHz) is the RF channel transmit frequency in GHz

Shenzhen Anbotek Compliance Laboratory Limited



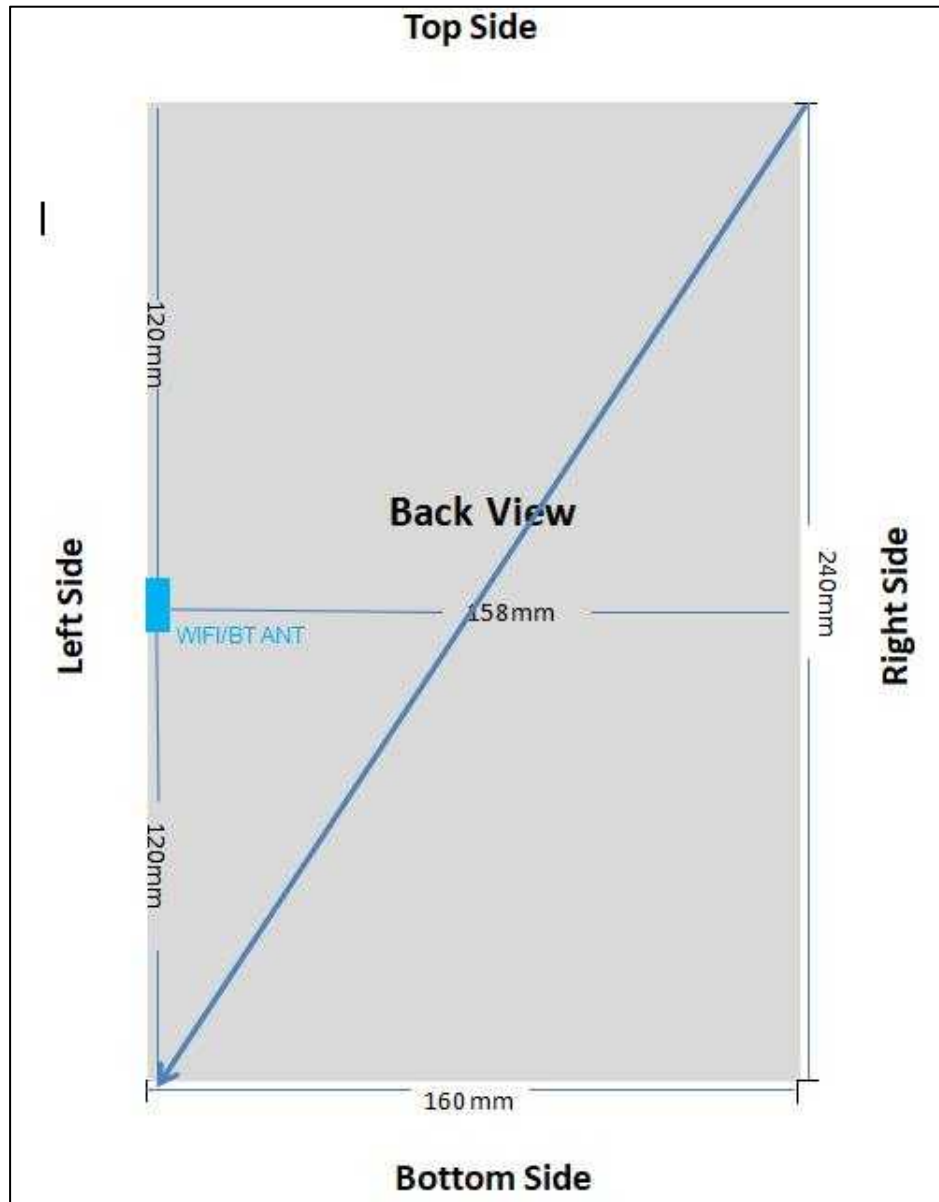
Power and distance are rounded to the nearest mW and mm before calculation
The result is rounded to one decimal place for comparison

| Bluetooth Max. Power (dBm) | Separation Distance (mm) | Frequency (GHz) | exclusion thresholds |
|----------------------------|--------------------------|-----------------|----------------------|
| 4.00 | 5 | 2.402 | 0.988 |

Per KDB 447498 D01, when the minimum test separation distance is <10 mm, a distance of 10 mm is applied to determine SAR test exclusion. The test exclusion threshold is 0.988 which is ≤ 3 , SAR testing is not required.



11. Antenna Location



Distance of The Antenna to the EUT surface and edge

| Antennas | Front | Back | Top Side | Bottom Side | Left Side | Right Side |
|------------|-------|-------|----------|-------------|-----------|------------|
| WIFI 2.4G | <25mm | <25mm | >25mm | >25mm | <25mm | >25mm |
| WIFI 5G/BT | <25mm | <25mm | >25mm | >25mm | <25mm | >25mm |

Positions for SAR tests; Body mode

| Antennas | Front | Back | Top Side | Bottom Side | Left Side | Right Side |
|------------|-------|------|----------|-------------|-----------|------------|
| WIFI 2.4G | Yes | Yes | No | No | Yes | No |
| WIFI 5G/BT | Yes | Yes | No | No | Yes | No |



General Note: According with FCC KDB 447498 D01, appendix A, <SAR test exclusion thresholds for 100MHz~6GHz and≤50mm> table, this device SAR test configurations considerations are shown in the table above.

Per KDB 447498 D01, for larger devices, the test separation distance of adjacent edge configuration is determined by the closest separation between the antenna and the user.



12. SAR Test Results Summary

General Note:

1.Per KDB 447498 D01v06, the reported SAR is the measured SAR value adjusted for maximum tune-up tolerance.

Scaling Factor = tune-up limit power (mW) / EUT RF power (mW), where tune-up limit is the maximum rated power among all production units.

Reported SAR(W/kg)= Measured SAR(W/kg) Scaling Factor*

2.Per KDB 447498 D01v06, for each exposure position, if the highest output channel reported $SAR \leq 0.8W/kg$, other channels SAR testing are not necessary



12.1. Body-worn SAR Results

<WIFI>

| Plot No. | Band | Mode | Test Position | Gap (mm) | Ch. | Freq. (MHz) | Average Power (dBm) | Tune-Up Limit (dBm) | Scaling Factor | Power Drift (dB) | Measured SAR _{1g} (W/kg) | Reported SAR _{1g} (W/kg) |
|----------|------------|---------|---------------|----------|-----|-------------|---------------------|---------------------|----------------|------------------|-----------------------------------|-----------------------------------|
| | WIFI2.4GHz | 802.11b | Left | 0 | 6 | 2437 | 12.02 | 12.50 | 1.117 | 0.06 | 0.113 | 0.126 |
| | WIFI2.4GHz | 802.11b | Right | 0 | 6 | 2437 | 12.02 | 12.50 | 1.117 | N/A | N/A | N/A |
| | WIFI2.4GHz | 802.11b | Top | 0 | 6 | 2437 | 12.02 | 12.50 | 1.117 | N/A | N/A | N/A |
| | WIFI2.4GHz | 802.11b | Bottom | 0 | 6 | 2437 | 12.02 | 12.50 | 1.117 | N/A | N/A | N/A |
| | WIFI2.4GHz | 802.11b | Front | 0 | 6 | 2437 | 12.02 | 12.50 | 1.117 | 0.02 | 0.236 | 0.264 |
| #1 | WIFI2.4GHz | 802.11b | Back | 0 | 6 | 2437 | 12.02 | 12.50 | 1.117 | 0.13 | 0.357 | 0.399 |
| | WIFI5.2GHz | 802.11a | Left | 0 | 48 | 5240 | 12.76 | 13.00 | 1.057 | 0.08 | 0.215 | 0.227 |
| | WIFI5.2GHz | 802.11a | Right | 0 | 48 | 5240 | 12.76 | 13.00 | 1.057 | N/A | N/A | N/A |
| | WIFI5.2GHz | 802.11a | Top | 0 | 48 | 5240 | 12.76 | 13.00 | 1.057 | N/A | N/A | N/A |
| | WIFI5.2GHz | 802.11a | Bottom | 0 | 48 | 5240 | 12.76 | 13.00 | 1.057 | N/A | N/A | N/A |
| | WIFI5.2GHz | 802.11a | Front | 0 | 48 | 5240 | 12.76 | 13.00 | 1.057 | 0.06 | 0.124 | 0.131 |
| #2 | WIFI5.2GHz | 802.11a | Back | 0 | 48 | 5240 | 12.76 | 13.00 | 1.057 | 0.11 | 0.349 | 0.369 |
| | WIFI5.8GHz | 802.11a | Left | 0 | 165 | 5825 | 12.85 | 13.00 | 1.035 | -0.03 | 0.342 | 0.354 |
| | WIFI5.8GHz | 802.11a | Right | 0 | 165 | 5825 | 12.85 | 13.00 | 1.035 | N/A | N/A | N/A |
| | WIFI5.8GHz | 802.11a | Top | 0 | 165 | 5825 | 12.85 | 13.00 | 1.035 | N/A | N/A | N/A |
| | WIFI5.8GHz | 802.11a | Bottom | 0 | 165 | 5825 | 12.85 | 13.00 | 1.035 | N/A | N/A | N/A |
| | WIFI5.8GHz | 802.11a | Front | 0 | 165 | 5825 | 12.85 | 13.00 | 1.035 | 0.02 | 0.245 | 0.254 |
| #5 | WIFI5.8GHz | 802.11a | Back | 0 | 165 | 5825 | 12.85 | 13.00 | 1.035 | 0.06 | 0.458 | 0.474 |

Note:

1. Per KDB 865664 D01V01,for each frequency band ,repeated SAR measurement is required only when the measured SAR is ≥ 0.8 W/Kg.
2. Per KDB 865664 D01V01,if the ratio of largest to smallest SAR for the original and first repeated measurement is ≤ 1.2 and the measured SAR < 1.45 W/Kg, only one repeated measurement is required.
3. Perform a second repeated measurement only if the ratio of largest to smallest SAR for the original and first repeated measurements is > 1.20 or when the original or repeated measurement is ≥ 1.45 W/Kg
4. The ratio is the difference in percentage between original and repeated measured SAR.



13. Simultaneous Transmission Analysis

Simultaneous TX SAR Considerations

| No. | Applicable Simultaneous Transmission |
|-----|--------------------------------------|
|-----|--------------------------------------|

| | |
|----|-----|
| 1. | N/A |
|----|-----|

Note:Bluetooth and WIFI are on the same antenan and cannot be Transmitted Simultaneously.



14. Measurement Uncertainty

| NO | Source | Uncert. ai (%) | Prob. Dist. | Div. | kci (1g) | ci (10g) | Stand.U ncert. ui (1g) | Stand.U ncert. ui (10g) | Veff |
|------------|---|----------------|-------------|------------|----------|----------|------------------------|-------------------------|----------|
| 1 | Repeat | 0.4 | N | 1 | 1 | 1 | 0.4 | 0.4 | 9 |
| Instrument | | | | | | | | | |
| 2 | Probe calibration | 7 | N | 2 | 1 | 1 | 3.5 | 3.5 | ∞ |
| 3 | Axial isotropy | 4.7 | R | $\sqrt{3}$ | 0.7 | 0.7 | 1.9 | 1.9 | ∞ |
| 4 | Hemispherical isotropy | 9.4 | R | $\sqrt{3}$ | 0.7 | 0.7 | 3.9 | 3.9 | ∞ |
| 5 | Boundary effect | 1.0 | R | $\sqrt{3}$ | 1 | 1 | 0.6 | 0.6 | ∞ |
| 6 | Linearity | 4.7 | R | $\sqrt{3}$ | 1 | 1 | 2.7 | 2.7 | ∞ |
| 7 | Detection limits | 1.0 | R | $\sqrt{3}$ | 1 | 1 | 0.6 | 0.6 | ∞ |
| 8 | Readout electronics | 0.3 | N | 1 | 1 | 1 | 0.3 | 0.3 | ∞ |
| 9 | Response time | 0.8 | R | $\sqrt{3}$ | 1 | 1 | 0.5 | 0.5 | ∞ |
| 10 | Integration time | 2.6 | R | $\sqrt{3}$ | 1 | 1 | 1.5 | 1.5 | ∞ |
| 11 | Ambient noise | 3.0 | R | $\sqrt{3}$ | 1 | 1 | 1.7 | 1.7 | ∞ |
| 12 | Ambient reflections | 3.0 | R | $\sqrt{3}$ | 1 | 1 | 1.7 | 1.7 | ∞ |
| 13 | Probe positioner mech. restrictions | 0.4 | R | $\sqrt{3}$ | 1 | 1 | 0.2 | 0.2 | ∞ |
| 14 | Probe positioning with respect to phantom shell | 2.9 | R | $\sqrt{3}$ | 1 | 1 | 1.7 | 1.7 | ∞ |
| 15 | Max.SAR evaluation | 1.0 | R | $\sqrt{3}$ | 1 | 1 | 0.6 | 0.6 | ∞ |



| Test sample related | | | | | | | | | |
|-----------------------------|------------------------------|------------------|-----|---|------|------|-------|-------|----------|
| 16 | Device positioning | 3.8 | N | 1 | 1 | 1 | 3.8 | 3.8 | 99 |
| 17 | Device holder | 5.1 | N | 1 | 1 | 1 | 5.1 | 5.1 | 5 |
| 18 | Drift of output power | 5.0 | R | $\sqrt{3}$ | 1 | 1 | 2.9 | 2.9 | ∞ |
| Phantom and set-up | | | | | | | | | |
| 19 | Phantom uncertainty | 4.0 | R | $\sqrt{3}$ | 1 | 1 | 2.3 | 2.3 | ∞ |
| 20 | Liquid conductivity (target) | 5.0 | R | $\sqrt{3}$ | 0.64 | 0.43 | 1.8 | 1.2 | ∞ |
| 21 | Liquid conductivity (meas) | 2.5 | N | 1 | 0.64 | 0.43 | 1.6 | 1.2 | ∞ |
| 22 | Liquid Permittivity (target) | 5.0 | R | $\sqrt{3}$ | 0.6 | 0.49 | 1.7 | 1.5 | ∞ |
| 23 | Liquid Permittivity (meas) | 2.5 | N | 1 | 0.6 | 0.49 | 1.5 | 1.2 | ∞ |
| Combined standard | | | RSS | $U_c = \sqrt{\sum_{i=1}^n C_i^2 U_i^2}$ | | | 11.4% | 11.3% | 236 |
| Expanded uncertainty(P=95%) | | $U = k U_c$,k=2 | | | | | 22.8% | 22.6% | |



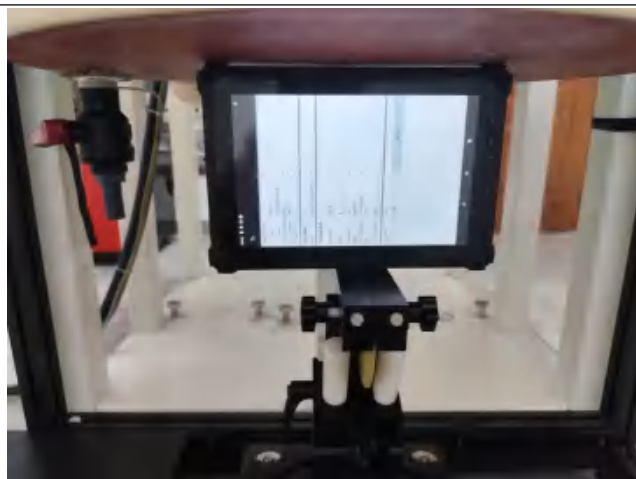
Appendix A. EUT Photos and Test Setup Photos



Body Front(0mm)



Body Back(0mm)



Body Left(0mm)



Appendix B. Plots of SAR System Check



2450MHz Head System Check

Date:10/08/2024

DUT: Dipole 2450 MHz; Type: D2450V2; Serial: 910

Communication System: CW; Frequency: 2450 MHz;Duty Cycle: 1:1

Medium parameters used (interpolated): $f = 2450$ MHz; $\sigma = 1.85$ S/m; $\epsilon_r = 39.08$; $\rho = 1000$ kg/m³

Phantom section: Flat Section

DASY5 Configuration:

Probe: EX3DV4 - SN7396; ConvF(7.57, 7.57, 7.57); Calibrated: May 06, 2024;

Sensor-Surface: 3mm (Mechanical Surface Detection)

Electronics: DAE4 Sn387; Calibrated: Sep.02.2024;

Phantom: SAM 1; Type: SAM;

Measurement SW: DASY52, Version 52.8 (1); SEMCAD X Version 14.6.5 (6469)

Area Scan (61x91x1):Measurement grid: dx=10.00 mm, dy=10.00 mm

Maximum value of SAR (interpolated) = 19.664 W/kg

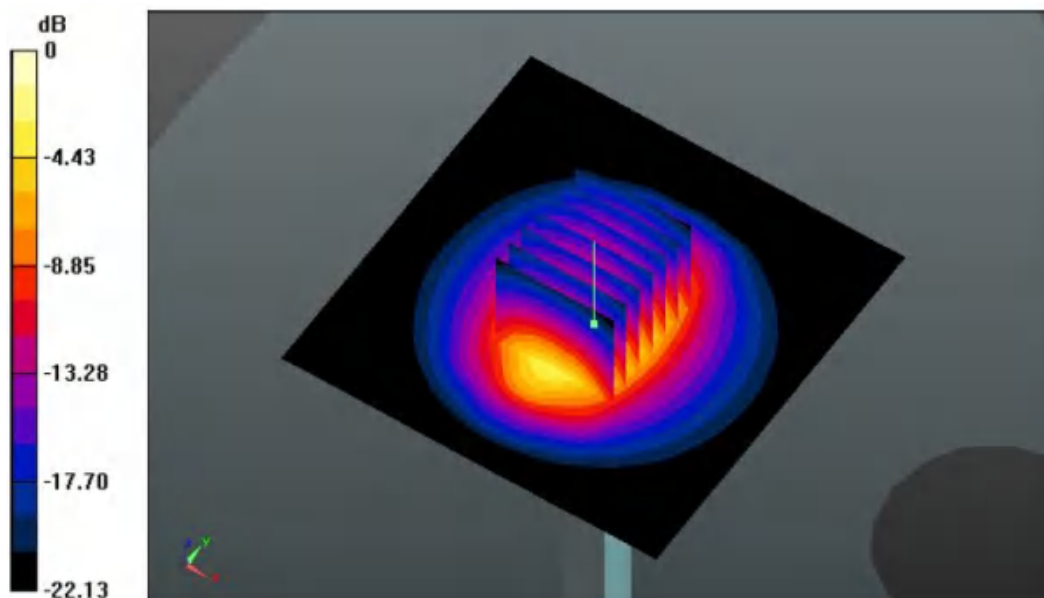
Zoom Scan (7x7x7)/Cube 0: Measurement grid: dx=5mm, dy=5mm, dz=5mm

Reference Value = 84.571 V/m; Power Drift = 0.05 dB

Peak SAR (extrapolated) = 26.125 W/kg

SAR(1 g) = 12.95 W/kg; SAR(10 g) = 5.92 W/kg

Maximum value of SAR (measured) = 19.47W/kg



5200MHz Head System Check

Date:10/08/2024

DUT: Dipole 5GHz; Type: D5GHzV2; Serial: D5GHzV2 - SN:1160

Communication System: UID 0, CW; Frequency: 5200 MHz; Duty Cycle: 1:1

Medium parameters used: $f = 5200 \text{ MHz}$; $\sigma = 4.71 \text{ S/m}$; $\epsilon_r = 36.21$; $\rho = 1000 \text{ kg/m}^3$

Phantom section: Flat Section

DASY5 Configuration:

- Probe: EX3DV4 – SN7396; ConvF(5.33, 5.33, 5.33); Calibrated: May 06, 2024;
- Sensor-Surface: 2mm (Mechanical Surface Detection)
- Electronics: DAE4 Sn387; Calibrated: Sep. 02, 2024
- Phantom: SAM; Type: QD000P40CD; Serial: TP:1670
- Measurement SW: DASY52, Version 52.8 (2); SEMCAD X Version 14.6.10 (7164)

Configuration/Pin=100mW/Area Scan (71x71x1): Interpolated grid: $dx=1.000 \text{ mm}$, $dy=1.000 \text{ mm}$

Maximum value of SAR (interpolated) = 20.9 W/kg

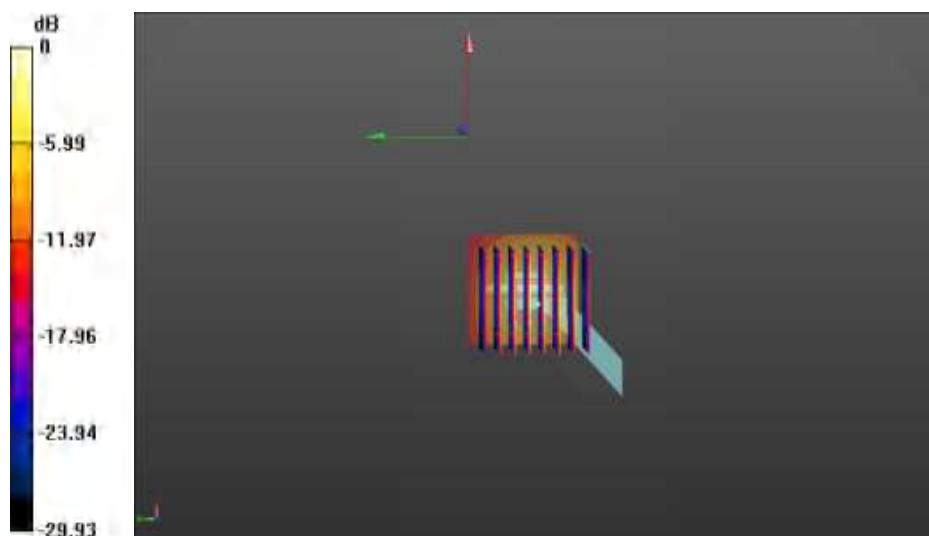
Configuration/Pin=100mW/Zoom Scan (7x7x7)/Cube 0: Measurement grid: $dx=4\text{mm}$, $dy=4\text{mm}$, $dz=1.4\text{mm}$

Reference Value = 59.857 V/m ; Power Drift = 0.04 dB

Peak SAR (extrapolated) = 34.58 W/kg

SAR(1 g) = 7.63 W/kg ; SAR(10 g) = 2.21 W/kg

Maximum value of SAR (measured) = 20.8 W/kg



5800MHz Head System Check

Date:10/08/2024

DUT: Dipole 5800 MHz; Type: D5GHzV2; Serial: D5GHzV2 - SN:1160

Communication System: UID 0, CW; Frequency: 5800 MHz;Duty Cycle: 1:1

Medium parameters used: $f = 5800 \text{ MHz}$; $\sigma = 5.35 \text{ S/m}$; $\epsilon_r = 35.05$; $\rho = 1000 \text{ kg/m}^3$

Phantom section: Flat Section

DASY5 Configuration:

- Probe: EX3DV4 – SN7396; ConvF(4.92, 4.92, 4.92); Calibrated: May 06, 2024;
- Sensor-Surface: 2mm (Mechanical Surface Detection)
- Electronics: DAE4 Sn387; Calibrated: Sep. 02, 2024
- Phantom: SAM; Type: QD000P40CD; Serial: TP:1670
- Measurement SW: DASY52, Version 52.8 (2); SEMCAD X Version 14.6.10 (7164)

Configuration/Pin=100mW/Area Scan (71x71x1): Interpolated grid: $dx=1.000 \text{ mm}$, $dy=1.000 \text{ mm}$

Maximum value of SAR (interpolated) = 18.8 W/kg

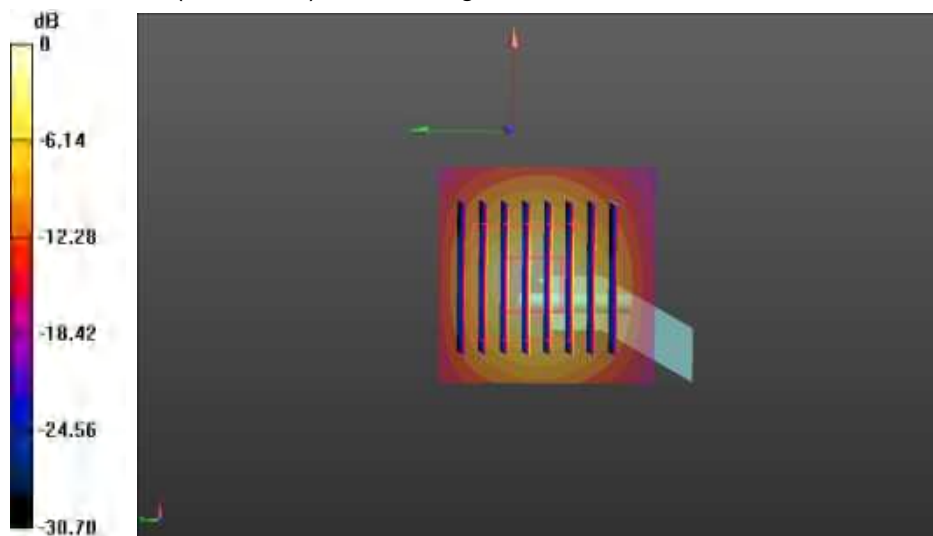
Configuration/Pin=100mW/Zoom Scan (7x7x7)/Cube 0: Measurement grid: $dx=4\text{mm}$, $dy=4\text{mm}$, $dz=1.4\text{mm}$

Reference Value = 56.773 V/m ; Power Drift = 0.08 dB

Peak SAR (extrapolated) = 31.5 W/kg

SAR(1 g) = 7.95 W/kg ; SAR(10 g) = 2.23 W/kg

Maximum value of SAR (measured) = 19.8 W/kg



Shenzhen Anbotek Compliance Laboratory Limited

Address: Sogood Industrial Zone Laboratory & 1/F. of Building D, Sogood Science and Technology Park,
Sanwei Community, Hangcheng Subdistrict, Bao'an District, Shenzhen, Guangdong, China
Tel:(86)0755-26066440 Email:service@anbotek.com



Hotline
400-003-0500
www.anbotek.com



Appendix C. Plots of SAR Test Data

Shenzhen Anbotek Compliance Laboratory Limited

Address: Sogood Industrial Zone Laboratory & 1/F. of Building D, Sogood Science and Technology Park,
Sanwei Community, Hangcheng Subdistrict, Bao'an District, Shenzhen, Guangdong, China
Tel:(86)0755-26066440 Email:service@anbotek.com



Hotline
400-003-0500
www.anbotek.com



#1

Date: 10/11/2024

WIFI 2.4G_802.11b_Body Back _Ch6

Communication System: UID 0, wifi (fcc) (0); Frequency: 2437 MHz;Duty Cycle: 1:1

Medium parameters used (interpolated): $f = 2437$ MHz; $\sigma = 1.89$ S/m; $\epsilon_r = 39.03$; $\rho = 1000$ kg/m³

Phantom section: Flat Section

DASY5 Configuration:

- Probe: EX3DV4 - SN7396; ConvF(7.57, 7.57, 7.57); Calibrated: May 06.2024;
- Sensor-Surface: 4mm (Mechanical Surface Detection)
- Electronics: DAE4 Sn387; Calibrated: Sep.02,2024
- Phantom: SAM 1; Type: SAM;
- Measurement SW: DASY52, Version 52.8 (2); SEMCAD X Version 14.6.10 (7164)

BODY/Back /Area Scan (91x161x1): Measurement grid: dx=1.200mm, dy=1.200mm

Maximum value of SAR (measured) = 0.417 W/kg

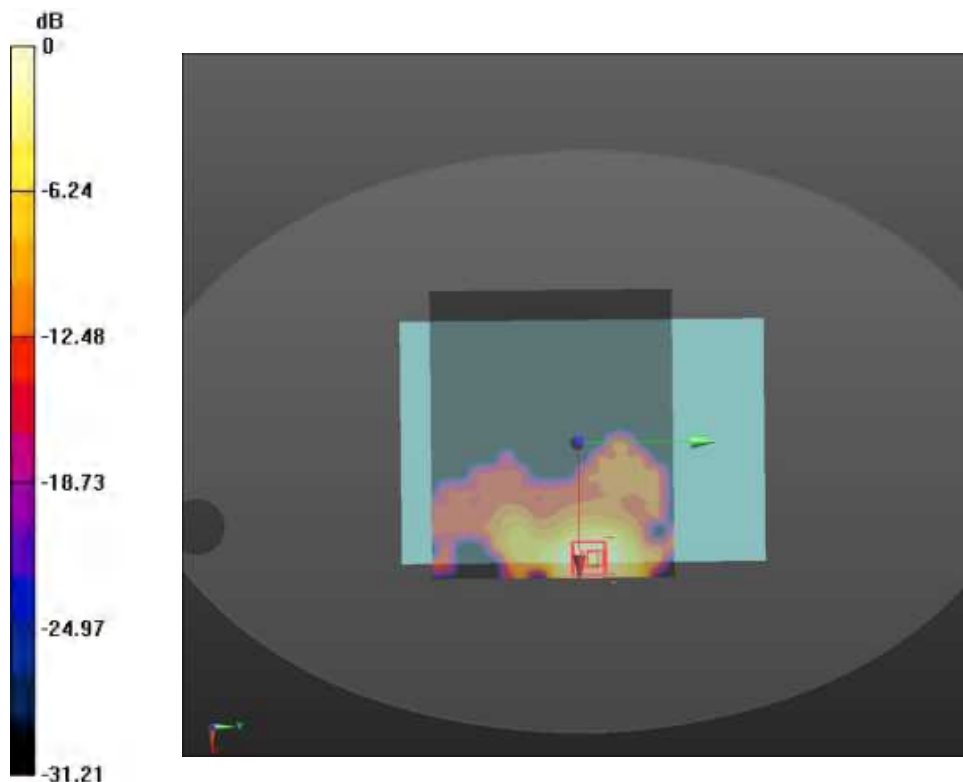
BODY/Back /Zoom Scan (7x7x7)/Cube 0: Measurement grid: dx=5mm, dy=5mm, dz=5mm

Reference Value = 1.806 V/m; Power Drift = -0.08 dB

Peak SAR (extrapolated) = 0.706 W/kg

SAR(1 g) = 0.357 W/kg; SAR(10 g) = 0.192 W/kg

Maximum value of SAR (measured) = 0.387 W/kg



#2

Date: 10/11/2024

WIFI 5.2G_802.11ac40_Body Back _Ch46

Communication System: UID 0, 802.11 (0); Frequency: 5230MHz; Duty Cycle: 1:1

Medium parameters used (interpolated): $f = 5230 \text{ MHz}$; $\sigma = 4.78 \text{ S/m}$; $\epsilon_r = 35.69$; $\rho = 1000 \text{ kg/m}^3$

Phantom section: Flat Section

DASY5 Configuration:

- Probe: EX3DV4 – SN7396; ConvF(5.33, 5.33, 5.33); Calibrated: May 06.2024;
- Sensor-Surface: 2mm (Mechanical Surface Detection)
- Electronics: DAE4 Sn387; Calibrated: Sep.02,2024
- Phantom: SAM2; Type: QD000P40CD; Serial: TP:1670
- Measurement SW: DASY52, Version 52.8 (7); SEMCAD X Version 14.6.10 (7164)

BODY/Back/Area Scan (91x161x1):Measurement grid: $dx=1.500\text{mm}$, $dy=1.500\text{mm}$

Maximum value of SAR (measured) = 0.546 W/kg

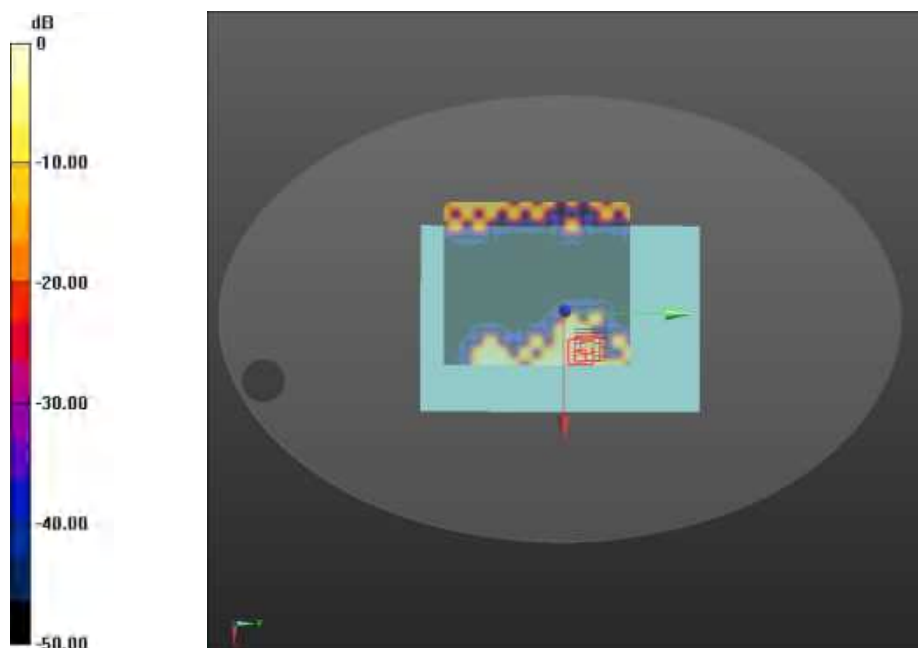
BODY/Back /Zoom Scan (8x8x7)/Cube 0:Measurement grid: $dx=4\text{mm}$, $dy=4\text{mm}$, $dz=1.4\text{mm}$

Reference Value = 1.203V/m; Power Drift = 0.11 dB

Peak SAR (extrapolated) = 1.21 W/kg

SAR(1 g) = 0.349 W/kg; SAR(10 g) = 0.137 W/kg

Maximum value of SAR (measured) = 0.394 W/kg



#3

Date: 10/11/2024

WIFI 5.8G_802.11ac20_Body Back _Ch165

Communication System: UID 0, 802.11 (0); Frequency: 5825MHz; Duty Cycle: 1:1

Medium parameters used (interpolated): $f = 5825 \text{ MHz}$; $\sigma = 5.37 \text{ S/m}$; $\epsilon_r = 35.09$; $\rho = 1000 \text{ kg/m}^3$

Phantom section: Flat Section

DASY5 Configuration:

- Probe: EX3DV4 – SN7396; ConvF(4.92, 4.92, 4.92); Calibrated: May 05,2024;
- Sensor-Surface: 2mm (Mechanical Surface Detection)
- Electronics: DAE4 Sn387; Calibrated: Sep.02,2024
- Phantom: SAM2; Type: QD000P40CD; Serial: TP:1670
- Measurement SW: DASY52, Version 52.8 (7); SEMCAD X Version 14.6.10 (7164)

BODY/ Front /Area Scan (91x161x1):Measurement grid: $dx=1.500\text{mm}$, $dy=1.500\text{mm}$

Maximum value of SAR (measured) =0.468 W/kg

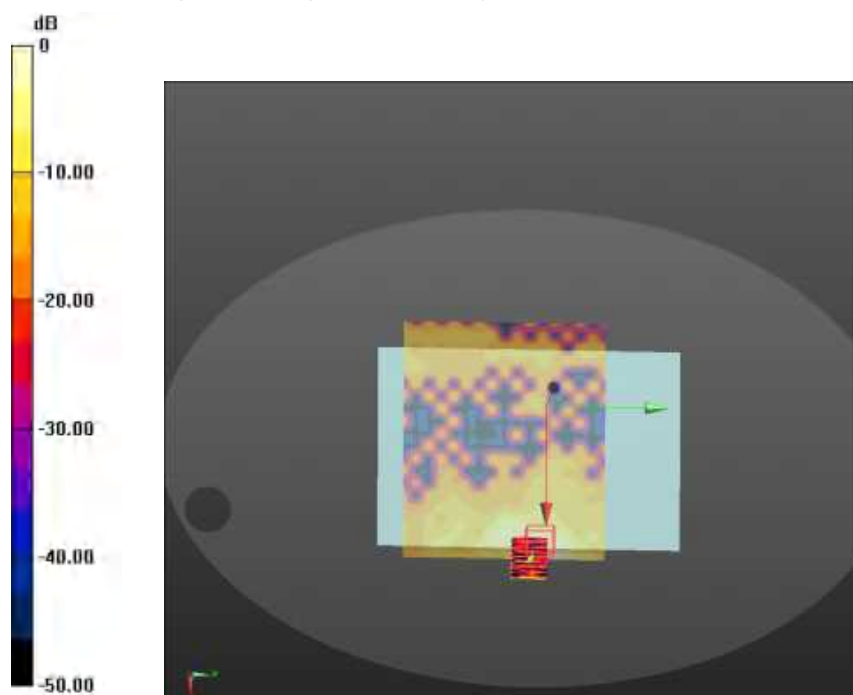
BODY/ Front /Zoom Scan (8x8x7)/Cube 0: Measurement grid: $dx=4\text{mm}$, $dy=4\text{mm}$, $dz=1.4\text{mm}$

Reference Value = 0.763 V/m; Power Drift =0.06 dB

Peak SAR (extrapolated) = 3.35 W/kg

SAR(1 g) = 0.458 W/kg; SAR(10 g) = 0.169W/kg

Maximum value of SAR (measured) = 0.471 W/kg



Appendix A. DASY System Calibration Certificate

Shenzhen Anbotek Compliance Laboratory Limited

Address: Sogood Industrial Zone Laboratory & 1/F. of Building D, Sogood Science and Technology Park,
Sanwei Community, Hangcheng Subdistrict, Bao'an District, Shenzhen, Guangdong, China
Tel:(86)0755-26066440 Email:service@anbotek.com



Hotline
400-003-0500
www.anbotek.com



Schmid & Partner Engineering AG

s p e a gZeughausstrasse 43, 8004 Zurich, Switzerland
Phone +41 44 245 9700, Fax +41 44 245 9779
info@speag.com, http://www.speag.com

IMPORTANT NOTICE

USAGE OF THE DAE 4

The DAE unit is a delicate, high precision instrument and requires careful treatment by the user. There are no serviceable parts inside the DAE. Special attention shall be given to the following points:

Battery Exchange: The battery cover of the DAE4 unit is closed using a screw, over tightening the screw may cause the threads inside the DAE to wear out.

Shipping of the DAE: Before shipping the DAE to SPEAG for calibration, remove the batteries and pack the DAE in an antistatic bag. This antistatic bag shall then be packed into a larger box or container which protects the DAE from impacts during transportation. The package shall be marked to indicate that a fragile instrument is inside.

E-Stop Failures: Touch detection may be malfunctioning due to broken magnets in the E-stop. Rough handling of the E-stop may lead to damage of these magnets. Touch and collision errors are often caused by dust and dirt accumulated in the E-stop. To prevent E-stop failure, the customer shall always mount the probe to the DAE carefully and keep the DAE unit in a non-dusty environment if not used for measurements.

Repair: Minor repairs are performed at no extra cost during the annual calibration. However, SPEAG reserves the right to charge for any repair especially if rough unprofessional handling caused the defect.

DASY Configuration Files: Since the exact values of the DAE input resistances, as measured during the calibration procedure of a DAE unit, are not used by the DASY software, a nominal value of 200 MOhm is given in the corresponding configuration file.

Important Note:

Warranty and calibration is void if the DAE unit is disassembled partly or fully by the Customer.

Important Note:

Never attempt to grease or oil the E-stop assembly. Cleaning and readjusting of the E-stop assembly is allowed by certified SPEAG personnel only and is part of the annual calibration procedure.

Important Note:

To prevent damage of the DAE probe connector pins, use great care when installing the probe to the DAE. Carefully connect the probe with the connector notch oriented in the mating position. Avoid any rotational movement of the probe body versus the DAE while turning the locking nut of the connector. The same care shall be used when disconnecting the probe from the DAE.

Schmid & Partner Engineering

TN_BR040315AD DAE4.doc

11.12.2009

Shenzhen Anbotek Compliance Laboratory Limited

Address: Sogood Industrial Zone Laboratory & 1/F. of Building D, Sogood Science and Technology Park,
Sanwei Community, Hangcheng Subdistrict, Bao'an District, Shenzhen, Guangdong, China
Tel: (86) 0755-26066440 Email: service@anbotek.com



Hotline
400-003-0500
www.anbotek.com



**Calibration Laboratory of
Schmid & Partner
Engineering AG**
Zeughausstrasse 43, 8004 Zurich, Switzerland



S Schweizerischer Kalibrierdienst
C Service suisse d'étalonnage
S Servizio svizzero di taratura
S Swiss Calibration Service

Accredited by the Swiss Accreditation Service (SAS)
The Swiss Accreditation Service is one of the signatories to the EA
Multilateral Agreement for the recognition of calibration certificates

Accreditation No.: SCS 0108

Client **Anbotek (Auden)**

Certificate No: DAE4-387_Sep02

CALIBRATION CERTIFICATE

Object **DAE4 - SD 000 D04 BM - SN: 387**

Calibration procedure(s) **QA CAL-06.v29
Calibration procedure for the data acquisition electronics (DAE)**

Calibration date: **September 02, 2024**

This calibration certificate documents the traceability to national standards, which realize the physical units of measurements (SI).
The measurements and the uncertainties with confidence probability are given on the following pages and are part of the certificate.

All calibrations have been conducted in the closed laboratory facility: environment temperature $(22 \pm 3)^{\circ}\text{C}$ and humidity $< 70\%$.

Calibration Equipment used (M&TE critical for calibration)

| Primary Standards | ID # | Cal Date (Certificate No.) | Scheduled Calibration |
|-------------------------------|--------------------|----------------------------|------------------------|
| Keithley Multimeter Type 2001 | SN: 0810278 | 15-Aug-24 (No:22092) | Aug-24 |
| Secondary Standards | ID # | Check Date (in house) | Scheduled Check |
| Auto DAE Calibration Unit | SE UWS 053 AA 1001 | 05-Jan-24 (in house check) | In house check: Jan-24 |
| Calibrator Box V2.1 | SE UMS 006 AA 1002 | 05-Jan-24 (in house check) | In house check: Jan-24 |

| | | | |
|----------------|----------------------------------|--|---------------|
| Calibrated by: | Name Dominique Steffen | Function Laboratory Technician | Signature |
| Approved by: | Sven Kühn | Deputy Manager | |

Issued: September 02, 2024

This calibration certificate shall not be reproduced except in full without written approval of the laboratory.

Certificate No: DAE4-387_Sep02

Page 1 of 5

Shenzhen Anbotek Compliance Laboratory Limited

Address: Sogood Industrial Zone Laboratory & 1/F. of Building D, Sogood Science and Technology Park,
Sanwei Community, Hangcheng Subdistrict, Bao'an District, Shenzhen, Guangdong, China
Tel:(86)0755-26066440 Email:service@anbotek.com

Hotline
400-003-0500
www.anbotek.com



**Calibration Laboratory of
Schmid & Partner
Engineering AG**
Zeughausstrasse 43, 8004 Zurich, Switzerland



S Schweizerischer Kalibrierdienst
C Service suisse d'étalonnage
S Servizio svizzero di taratura
S Swiss Calibration Service

Accredited by the Swiss Accreditation Service (SAS)
The Swiss Accreditation Service is one of the signatories to the EA
Multilateral Agreement for the recognition of calibration certificates

Accreditation No.: **SCS 0108**

Glossary

DAE data acquisition electronics
Connector angle information used in DASY system to align probe sensor X to the robot coordinate system.

Methods Applied and Interpretation of Parameters

- **DC Voltage Measurement:** Calibration Factor assessed for use in DASY system by comparison with a calibrated instrument traceable to national standards. The figure given corresponds to the full scale range of the voltmeter in the respective range.
- **Connector angle:** The angle of the connector is assessed measuring the angle mechanically by a tool inserted. Uncertainty is not required.
- The following parameters as documented in the Appendix contain technical information as a result from the performance test and require no uncertainty.
 - **DC Voltage Measurement Linearity:** Verification of the Linearity at +10% and -10% of the nominal calibration voltage. Influence of offset voltage is included in this measurement.
 - **Common mode sensitivity:** Influence of a positive or negative common mode voltage on the differential measurement.
 - **Channel separation:** Influence of a voltage on the neighbor channels not subject to an input voltage.
 - **AD Converter Values with inputs shorted:** Values on the internal AD converter corresponding to zero input voltage
 - **Input Offset Measurement:** Output voltage and statistical results over a large number of zero voltage measurements.
 - **Input Offset Current:** Typical value for information; Maximum channel input offset current, not considering the input resistance.
 - **Input resistance:** Typical value for information: DAE input resistance at the connector, during internal auto-zeroing and during measurement.
 - **Low Battery Alarm Voltage:** Typical value for information. Below this voltage, a battery alarm signal is generated.
 - **Power consumption:** Typical value for information. Supply currents in various operating modes.



DC Voltage Measurement

A/D - Converter Resolution nominal

High Range: 1LSB = 6.1μV , full range = -100...+300 mV
Low Range: 1LSB = 61nV , full range = -1.....+3mV

DASY measurement parameters: Auto Zero Time: 3 sec; Measuring time: 3 sec

| Calibration Factors | X | Y | Z |
|---------------------|-----------------------|-----------------------|-----------------------|
| High Range | 404.489 ± 0.02% (k=2) | 404.852 ± 0.02% (k=2) | 404.862 ± 0.02% (k=2) |
| Low Range | 3.97827 ± 1.50% (k=2) | 3.95875 ± 1.50% (k=2) | 3.97982 ± 1.50% (k=2) |

Connector Angle

| | |
|---|--------------|
| Connector Angle to be used in DASY system | 53.0 ° ± 1 ° |
|---|--------------|



Appendix (Additional assessments outside the scope of SCS0108)

1. DC Voltage Linearity

| High Range | Reading (μV) | Difference (μV) | Error (%) |
|-------------------|---------------------------|------------------------------|-----------|
| Channel X + Input | 200032.85 | -3.31 | -0.00 |
| Channel X + Input | 20007.64 | 1.88 | 0.01 |
| Channel X - Input | -20003.48 | 1.18 | -0.01 |
| Channel Y + Input | 200034.23 | -1.43 | -0.00 |
| Channel Y + Input | 20006.60 | 0.91 | 0.00 |
| Channel Y - Input | -20004.04 | 0.72 | -0.00 |
| Channel Z + Input | 200035.38 | -0.83 | -0.00 |
| Channel Z + Input | 20003.69 | -2.11 | -0.01 |
| Channel Z - Input | -20006.38 | -1.59 | 0.01 |

| Low Range | Reading (μV) | Difference (μV) | Error (%) |
|-------------------|---------------------------|------------------------------|-----------|
| Channel X + Input | 2001.63 | 0.08 | 0.00 |
| Channel X + Input | 202.29 | 0.70 | 0.35 |
| Channel X - Input | -197.90 | 0.60 | -0.30 |
| Channel Y + Input | 2001.33 | -0.07 | -0.00 |
| Channel Y + Input | 200.86 | -0.60 | -0.30 |
| Channel Y - Input | -199.87 | -1.23 | 0.62 |
| Channel Z + Input | 2001.61 | 0.27 | 0.01 |
| Channel Z + Input | 200.60 | -0.70 | -0.35 |
| Channel Z - Input | -199.51 | -0.85 | 0.43 |

2. Common mode sensitivity

DASY measurement parameters: Auto Zero Time: 3 sec; Measuring time: 3 sec

| | Common mode Input Voltage (mV) | High Range Average Reading (μV) | Low Range Average Reading (μV) |
|-----------|--------------------------------|--|---|
| Channel X | 200 | 13.50 | 11.56 |
| | - 200 | -8.64 | -11.18 |
| Channel Y | 200 | -0.81 | -1.28 |
| | - 200 | 1.05 | 0.09 |
| Channel Z | 200 | 7.17 | 6.91 |
| | - 200 | -9.46 | -9.01 |

3. Channel separation

DASY measurement parameters: Auto Zero Time: 3 sec; Measuring time: 3 sec

| | Input Voltage (mV) | Channel X (μV) | Channel Y (μV) | Channel Z (μV) |
|-----------|--------------------|-----------------------------|-----------------------------|-----------------------------|
| Channel X | 200 | - | -1.70 | 0.33 |
| Channel Y | 200 | 10.70 | - | -0.38 |
| Channel Z | 200 | 7.11 | 7.89 | - |



4. AD-Converter Values with inputs shorted

DASY measurement parameters: Auto Zero Time: 3 sec; Measuring time: 3 sec

| | High Range (LSB) | Low Range (LSB) |
|-----------|------------------|-----------------|
| Channel X | 15969 | 17466 |
| Channel Y | 15661 | 16162 |
| Channel Z | 15990 | 16190 |

5. Input Offset Measurement

DASY measurement parameters: Auto Zero Time: 3 sec; Measuring time: 3 sec
Input 10MΩ

| | Average (μV) | min. Offset (μV) | max. Offset (μV) | Std. Deviation (μV) |
|-----------|--------------|------------------|------------------|---------------------|
| Channel X | 0.73 | -2.58 | 3.29 | 0.62 |
| Channel Y | 0.41 | -0.49 | 1.23 | 0.40 |
| Channel Z | -0.80 | -1.88 | 0.30 | 0.42 |

6. Input Offset Current

Nominal Input circuitry offset current on all channels: <25fA

7. Input Resistance (Typical values for information)

| | Zeroing (kOhm) | Measuring (MOhm) |
|-----------|----------------|------------------|
| Channel X | 200 | 200 |
| Channel Y | 200 | 200 |
| Channel Z | 200 | 200 |

8. Low Battery Alarm Voltage (Typical values for information)

| Typical values | Alarm Level (VDC) |
|----------------|-------------------|
| Supply (+ Vcc) | +7.9 |
| Supply (- Vcc) | -7.6 |

9. Power Consumption (Typical values for information)

| Typical values | Switched off (mA) | Stand by (mA) | Transmitting (mA) |
|----------------|-------------------|---------------|-------------------|
| Supply (+ Vcc) | +0.01 | +6 | +14 |
| Supply (- Vcc) | -0.01 | -8 | -9 |



In Collaboration with
s p e a g
CALIBRATION LABORATORY中国认可
国际互认
校准
CALIBRATION
CNAS L0570Add: No.51 Xueyuan Road, Haidian District, Beijing, 100191, China
Tel: +86-10-62304633-2218 Fax: +86-10-62304633-2209
E-mail: cttl@chinattl.com Http://www.chinattl.cn

Client

Anbotek (Auden)

Certificate No: Z24-98671

CALIBRATION CERTIFICATE

Object EX3DV4 - SN:7396

Calibration Procedure(s) FF-Z12-006-08
Calibration Procedures for Dosimetric E-field Probes

Calibration date: May 06, 2024

This calibration Certificate documents the traceability to national standards, which realize the physical units of measurements(SI). The measurements and the uncertainties with confidence probability are given on the following pages and are part of the certificate.

All calibrations have been conducted in the closed laboratory facility: environment temperature(22±3)℃ and humidity<70%.

Calibration Equipment used (M&TE critical for calibration)

| Primary Standards | ID # | Cal Date(Calibrated by, Certificate No.) | Scheduled Calibration |
|-------------------------|-------------|--|-----------------------|
| Power Meter NRP2 | 101919 | 20-Jun-23 (CTTL, No.J23 X07447) | Jun-23 |
| Power sensor NRP-Z91 | 101547 | 20-Jun-23 (CTTL, No.J23 X07447) | Jun-23 |
| Power sensor NRP-Z91 | 101548 | 20-Jun-23 (CTTL, No.J23 X07447) | Jun-23 |
| Reference10dBAttenuator | 18N50W-10dB | 13-Mar-24(CTTL, No.J24X01547) | Mar-24 |
| Reference20dBAttenuator | 18N50W-20dB | 13-Mar-24(CTTL, No.J24X01548) | Mar-24 |
| Reference Probe EX3DV4 | SN 7433 | 26-Sep-23(SPEAG, No.EX3-7433_Sep22) | Sep-23 |
| DAE4 | SN 549 | 13-Dec-23(SPEAG, No.DAE4-549_Dec22) | Dec-23 |
| Secondary Standards | ID # | Cal Date(Calibrated by, Certificate No.) | Scheduled Calibration |
| SignalGeneratorMG3700A | 6201052605 | 27-Jun-23 (CTTL, No.J23X04776) | Jun-23 |
| Network Analyzer E5071C | MY46110673 | 13-Jan-24 (CTTL, No.J24X00285) | Jan-24 |

| | Name | Function |
|----------------|-------------|--------------------|
| Calibrated by: | Yu Zongying | SAR Test Engineer |
| Reviewed by: | Lin Hao | SAR Test Engineer |
| Approved by: | Qi Dianyuan | SAR Project Leader |

Signature

Issued: May06, 2024

This calibration certificate shall not be reproduced except in full without written approval of the laboratory.

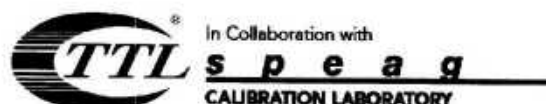
Certificate No: Z24-98671

Page 1 of 11

Shenzhen Anbotek Compliance Laboratory Limited

Address: Sogood Industrial Zone Laboratory & 1/F. of Building D, Sogood Science and Technology Park,
Sanwei Community, Hangcheng Subdistrict, Bao'an District, Shenzhen, Guangdong, China
Tel:(86)0755-26066440 Email:service@anbotek.com

Hotline
400-003-0500
www.anbotek.com



Add: No.51 Xueyuan Road, Haidian District, Beijing, 100191, China
Tel: +86-10-62304633-2218 Fax: +86-10-62304633-2209
E-mail: ctrl@chinattl.com [Http://www.chinattl.cn](http://www.chinattl.cn)

Probe EX3DV4

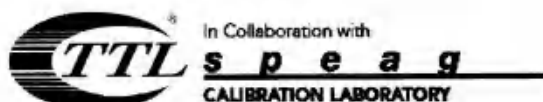
SN: 7396

Calibrated: May 06, 2024

Calibrated for DASY/EASY Systems

(Note: non-compatible with DASY2 system!)





Add: No.51 Xueyuan Road, Haidian District, Beijing, 100191, China
Tel: +86-10-62304633-2218 Fax: +86-10-62304633-2209
E-mail: cttl@chinattl.com [Http://www.chinattl.cn](http://www.chinattl.cn)

DASY/EASY – Parameters of Probe: EX3DV4 – SN: 7396

Basic Calibration Parameters

| | Sensor X | Sensor Y | Sensor Z | Unc (k=2) |
|--------------------------------------|----------|----------|----------|-----------|
| Norm($\mu V/(V/m)^2$) ^A | 0.54 | 0.53 | 0.50 | ±10.0% |
| DCP(mV) ^B | 97.8 | 104.5 | 102.5 | |

Modulation Calibration Parameters

| UID | Communication System Name | | A dB | B dB· μV | C | D dB | VR mV | Unc ^E (k=2) |
|-----|---------------------------|---|------|---------------|-----|------|-------|------------------------|
| 0 | CW | X | 0.0 | 0.0 | 1.0 | 0.00 | 199.9 | ±2.4% |
| | | Y | 0.0 | 0.0 | 1.0 | | 203.3 | |
| | | Z | 0.0 | 0.0 | 1.0 | | 195.0 | |

The reported uncertainty of measurement is stated as the standard uncertainty of Measurement multiplied by the coverage factor k=2, which for a normal distribution Corresponds to a coverage probability of approximately 95%.

^A The uncertainties of Norm X, Y, Z do not affect the E²-field uncertainty inside TSL (see Page 5 and Page 6).

^B Numerical linearization parameter: uncertainty not required.

^E Uncertainty is determined using the max. deviation from linear response applying rectangular distribution and is expressed for the square of the field value.





Add: No.51 Xueyuan Road, Haidian District, Beijing, 100191, China
Tel: +86-10-62304633-2218 Fax: +86-10-62304633-2209
E-mail: entl@chinanet.com Http://www.chinanet.cn

DASY/EASY – Parameters of Probe: EX3DV4 – SN: 7396

Calibration Parameter Determined in Head Tissue Simulating Media

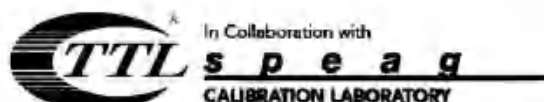
| f [MHz] ^C | Relative Permittivity ^F | Conductivity (S/m) ^F | ConvF X | ConvF Y | ConvF Z | Alpha ^G | Depth ^G (mm) | Unct. (k=2) |
|----------------------|------------------------------------|---------------------------------|---------|---------|---------|--------------------|-------------------------|-------------|
| 750 | 41.9 | 0.89 | 9.82 | 9.82 | 9.82 | 0.30 | 0.85 | ±12.1% |
| 835 | 41.5 | 0.90 | 9.71 | 9.71 | 9.71 | 0.15 | 1.36 | ±12.1% |
| 900 | 41.5 | 0.97 | 9.87 | 9.87 | 9.87 | 0.16 | 1.37 | ±12.1% |
| 1750 | 40.1 | 1.37 | 8.61 | 8.61 | 8.61 | 0.25 | 1.04 | ±12.1% |
| 1900 | 40.0 | 1.40 | 8.13 | 8.13 | 8.13 | 0.24 | 1.01 | ±12.1% |
| 2100 | 39.8 | 1.49 | 8.14 | 8.14 | 8.14 | 0.24 | 1.04 | ±12.1% |
| 2300 | 39.5 | 1.67 | 7.85 | 7.85 | 7.85 | 0.40 | 0.75 | ±12.1% |
| 2450 | 39.2 | 1.80 | 7.57 | 7.57 | 7.57 | 0.50 | 0.75 | ±12.1% |
| 2600 | 39.0 | 1.96 | 7.38 | 7.38 | 7.38 | 0.64 | 0.68 | ±12.1% |
| 5250 | 35.9 | 4.71 | 5.33 | 5.33 | 5.33 | 0.45 | 1.30 | ±13.3% |
| 5600 | 35.5 | 5.07 | 4.89 | 4.89 | 4.89 | 0.45 | 1.35 | ±13.3% |
| 5750 | 35.4 | 5.22 | 4.92 | 4.92 | 4.92 | 0.45 | 1.45 | ±13.3% |

^C Frequency validity above 300 MHz of ±100MHz only applies for DASY v4.4 and higher (Page 2), else it is restricted to ±50MHz. The uncertainty is the RSS of ConvF uncertainty at calibration frequency and the uncertainty for the indicated frequency band. Frequency validity below 300 MHz is ± 10, 25, 40, 50 and 70 MHz for ConvF assessments at 30, 64, 128, 150 and 220 MHz respectively. Above 5 GHz frequency validity can be extended to ± 110 MHz.

^F At frequency below 3 GHz, the validity of tissue parameters (ϵ and σ) can be relaxed to ±10% if liquid compensation formula is applied to measured SAR values. At frequencies above 3 GHz, the validity of tissue parameters (ϵ and σ) is restricted to ±5%. The uncertainty is the RSS of the ConvF uncertainty for indicated target tissue parameters.

^G Alpha/Depth are determined during calibration. SPEAG warrants that the remaining deviation due to the boundary effect after compensation is always less than ± 1% for frequencies below 3 GHz and below ± 2% for the frequencies between 3-6 GHz at any distance larger than half the probe tip diameter from the boundary.





Add: No.51 Xueyuan Road, Haidian District, Beijing, 100191, China
Tel: +86-10-62304633-2218 Fax: +86-10-62304633-2209
E-mail: ttl@chinatitl.com <http://www.chinatitl.cn>

DASY/EASY – Parameters of Probe: EX3DV4 – SN: 7396

Calibration Parameter Determined in Body Tissue Simulating Media

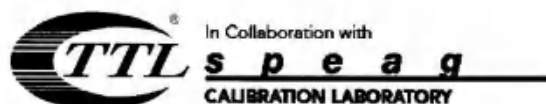
| f [MHz] ^C | Relative Permittivity ^F | Conductivity (S/m) ^F | ConvF X | ConvF Y | ConvF Z | Alpha ^G | Depth ^G (mm) | Unct. (k=2) |
|----------------------|------------------------------------|---------------------------------|---------|---------|---------|--------------------|-------------------------|-------------|
| 750 | 55.5 | 0.96 | 10.09 | 10.09 | 10.09 | 0.30 | 0.90 | ±12.1% |
| 835 | 55.2 | 0.97 | 9.88 | 9.88 | 9.88 | 0.19 | 1.32 | ±12.1% |
| 900 | 55.0 | 1.05 | 9.82 | 9.82 | 9.82 | 0.23 | 1.15 | ±12.1% |
| 1750 | 53.4 | 1.49 | 8.24 | 8.24 | 8.24 | 0.24 | 1.06 | ±12.1% |
| 1900 | 53.3 | 1.52 | 7.97 | 7.97 | 7.97 | 0.19 | 1.24 | ±12.1% |
| 2100 | 53.2 | 1.62 | 8.18 | 8.18 | 8.18 | 0.19 | 1.39 | ±12.1% |
| 2300 | 52.9 | 1.81 | 7.88 | 7.88 | 7.88 | 0.55 | 0.80 | ±12.1% |
| 2450 | 52.7 | 1.95 | 7.53 | 7.53 | 7.53 | 0.46 | 0.89 | ±12.1% |
| 2600 | 52.5 | 2.16 | 7.38 | 7.38 | 7.38 | 0.52 | 0.80 | ±12.1% |
| 5250 | 48.9 | 5.36 | 4.93 | 4.93 | 4.93 | 0.45 | 1.80 | ±13.3% |
| 5600 | 48.5 | 5.77 | 4.19 | 4.19 | 4.19 | 0.48 | 1.90 | ±13.3% |
| 5750 | 48.3 | 5.94 | 4.52 | 4.52 | 4.52 | 0.48 | 1.95 | ±13.3% |

^C Frequency validity above 300 MHz of ±100MHz only applies for DASY v4.4 and higher (Page 2), else it is restricted to ±50MHz. The uncertainty is the RSS of ConvF uncertainty at calibration frequency and the uncertainty for the indicated frequency band. Frequency validity below 300 MHz is ±10, 25, 40, 50 and 70 MHz for ConvF assessments at 30, 64, 128, 150 and 220 MHz respectively. Above 5 GHz frequency validity can be extended to ±110 MHz.

^F At frequency below 3 GHz, the validity of tissue parameters (ϵ and σ) can be relaxed to ±10% if liquid compensation formula is applied to measured SAR values. At frequencies above 3 GHz, the validity of tissue parameters (ϵ and σ) is restricted to ±5%. The uncertainty is the RSS of the ConvF uncertainty for indicated target tissue parameters.

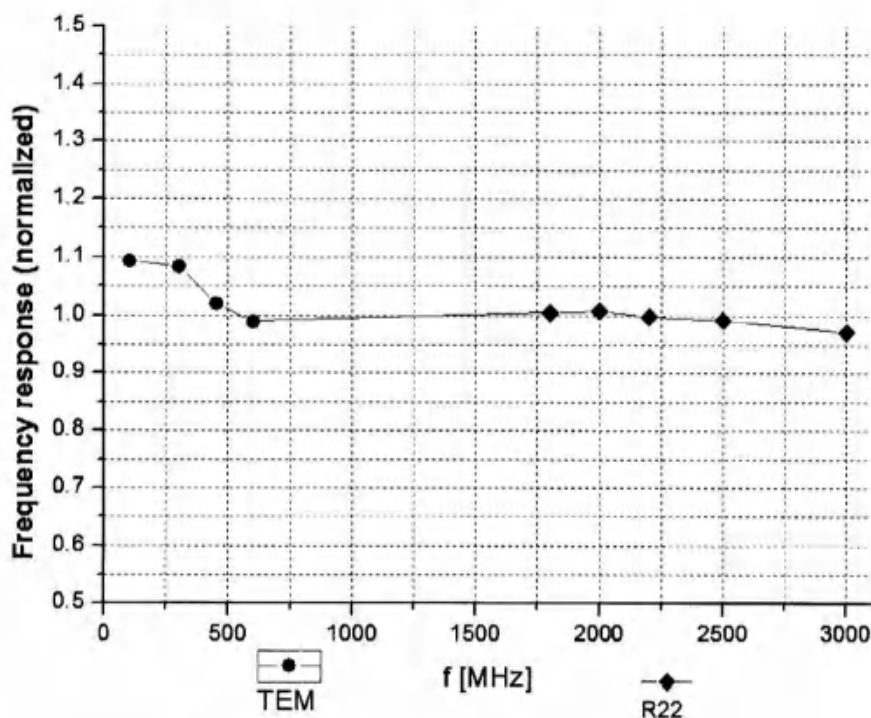
^G Alpha/Depth are determined during calibration. SPEAG warrants that the remaining deviation due to the boundary effect after compensation is always less than ±1% for frequencies below 3 GHz and below ±2% for the frequencies between 3-6 GHz at any distance larger than half the probe tip diameter from the boundary.





Add: No.51 Xueyuan Road, Haidian District, Beijing, 100191, China
Tel: +86-10-62304633-2218 Fax: +86-10-62304633-2209
E-mail: cttl@chinattl.com [Http://www.chinattl.cn](http://www.chinattl.cn)

Frequency Response of E-Field (TEM-Cell: ifi110 EXX, Waveguide: R22)



Uncertainty of Frequency Response of E-field: $\pm 7.4\%$ (k=2)



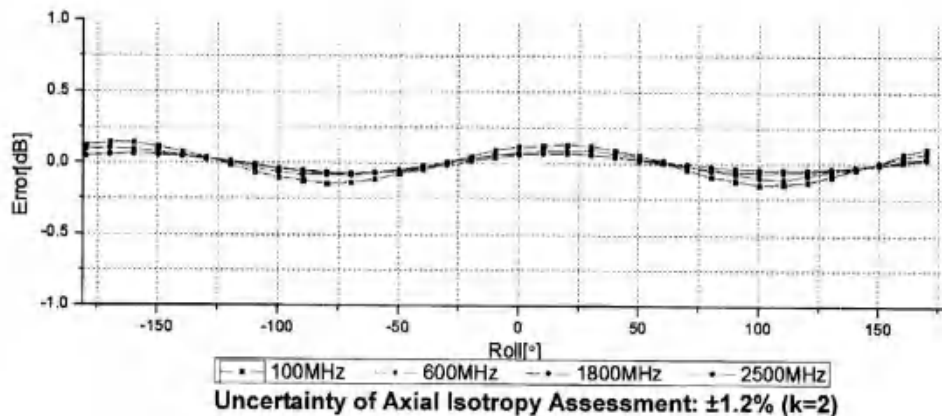
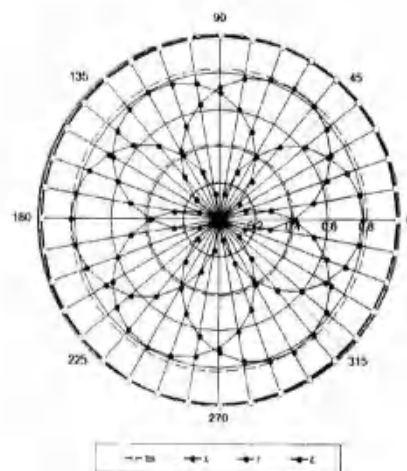
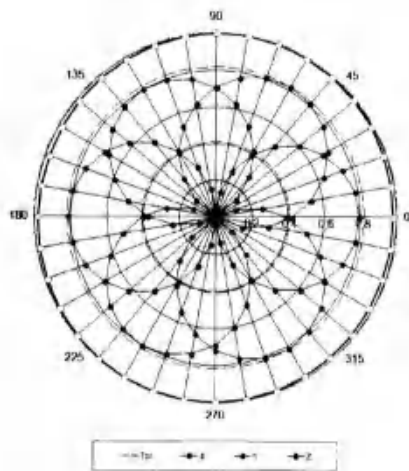


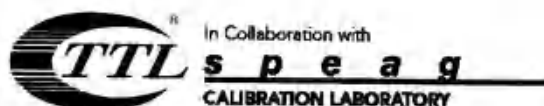
Add: No.51 Xueyuan Road, Haidian District, Beijing, 100191, China.
Tel: +86-10-62304633-2218 Fax: +86-10-62304633-2209
E-mail: ettl@chinattl.com [Http://www.chinattl.cn](http://www.chinattl.cn)

Receiving Pattern (Φ), $\theta=0^\circ$

f=600 MHz, TEM

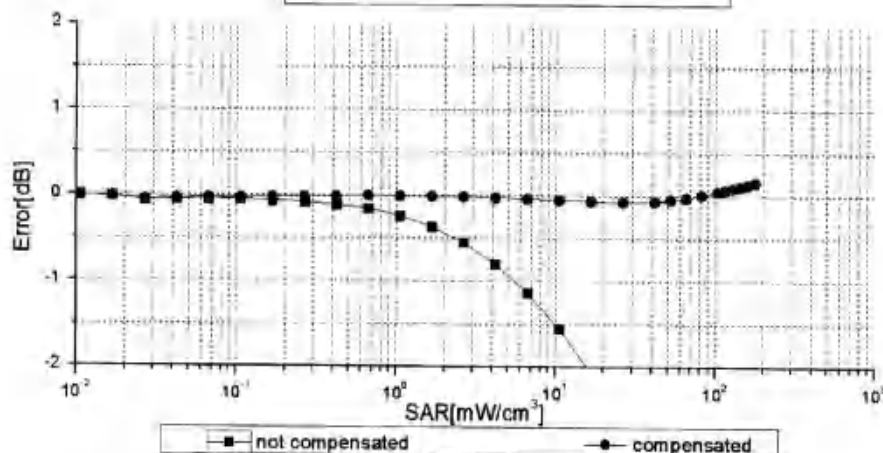
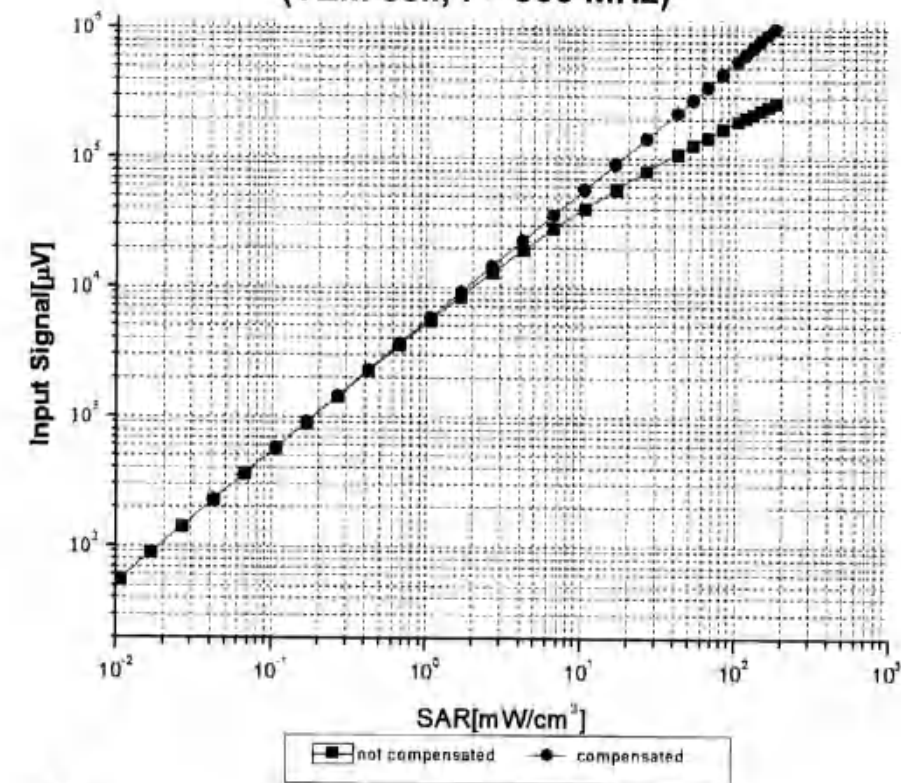
f=1800 MHz, R22





Add: No.51 Xueyuan Road, Haidian District, Beijing, 100191, China
Tel: +86-10-62304633-2218 Fax: +86-10-62304633-2209
E-mail: ttl@chinatl.com Http://www.chinatl.cn

Dynamic Range f(SAR_{head}) (TEM cell, f = 900 MHz)

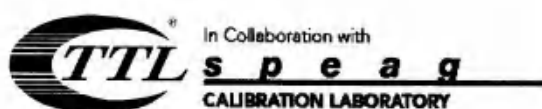


Uncertainty of Linearity Assessment: $\pm 0.9\%$ (k=2)

Certificate No: 724-98671

Page 9 of 11



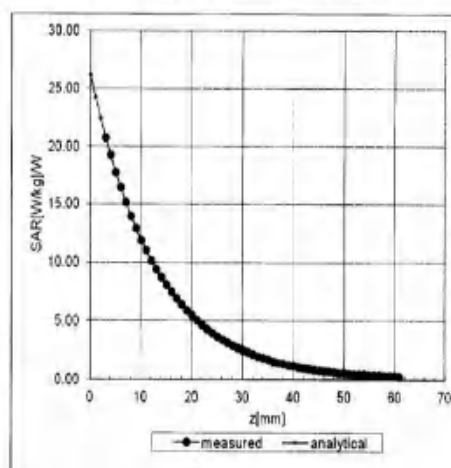
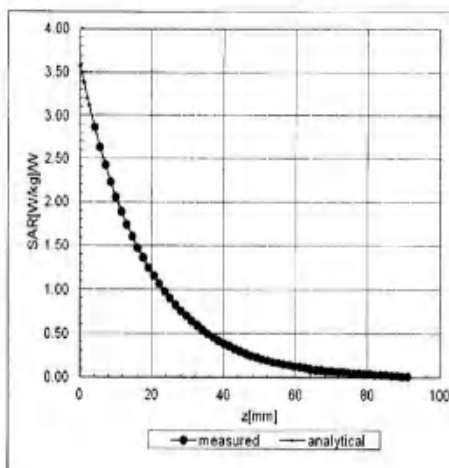


Add: No.51 Xueyuan Road, Haidian District, Beijing, 100191, China
Tel: +86-10-62304633-2218 Fax: +86-10-62304633-2209
E-mail: cttl@chinattl.com Http://www.chinattl.cn

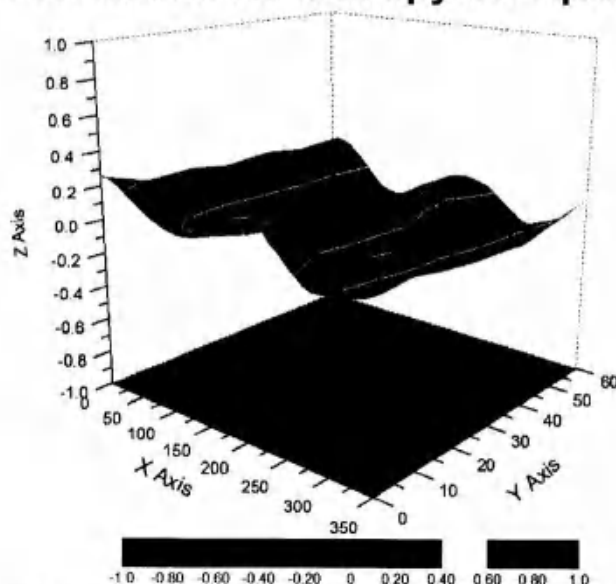
Conversion Factor Assessment

f=900 MHz, WGLS R9(H_convF)

f=1750 MHz, WGLS R22(H_convF)



Deviation from Isotropy in Liquid

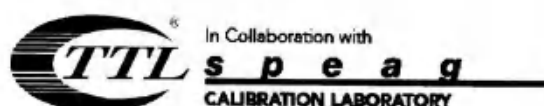


Uncertainty of Spherical Isotropy Assessment: $\pm 3.2\%$ (K=2)

Certificate No: Z24-98671

Page 10 of 11





Add: No.51 Xueyuan Road, Haidian District, Beijing, 100191, China
Tel: +86-10-62304633-2218 Fax: +86-10-62304633-2209
E-mail: cttl@chinattl.com [Http://www.chinattl.cn](http://www.chinattl.cn)

DASY/EASY – Parameters of Probe: EX3DV4 – SN: 7396

Other Probe Parameters

| | |
|---|------------|
| Sensor Arrangement | Triangular |
| Connector Angle (°) | 156.9 |
| Mechanical Surface Detection Mode | enabled |
| Optical Surface Detection Mode | disable |
| Probe Overall Length | 337mm |
| Probe Body Diameter | 10mm |
| Tip Length | 9mm |
| Tip Diameter | 2.5mm |
| Probe Tip to Sensor X Calibration Point | 1mm |
| Probe Tip to Sensor Y Calibration Point | 1mm |
| Probe Tip to Sensor Z Calibration Point | 1mm |
| Recommended Measurement Distance from Surface | 1.4mm |





In Collaboration with
s p e a g
CALIBRATION LABORATORY



中国认可
国际互认
校准
CALIBRATION
CNAS L0570

Add: No.51 Xueyuan Road, Haidian District, Beijing, 100191, China
Tel: +86-10-62304633-2079 Fax: +86-10-62304633-2504
E-mail: cttl@chinattl.com [Http://www.chinattl.cn](http://www.chinattl.cn)

Client

Anbotek (Auden)

Certificate No: Z24-97091

CALIBRATION CERTIFICATE

Object D2450V2 - SN: 910

Calibration Procedure(s) FD-Z24-2-003-01
Calibration Procedures for dipole validation kits

Calibration date: Jun 11, 2024

This calibration Certificate documents the traceability to national standards, which realize the physical units of measurements(SI). The measurements and the uncertainties with confidence probability are given on the following pages and are part of the certificate.

All calibrations have been conducted in the closed laboratory facility: environment temperature(22±3)℃ and humidity<70%.

Calibration Equipment used (M&TE critical for calibration)

| Primary Standards | ID # | Cal Date(Calibrated by, Certificate No.) | Scheduled Calibration |
|-------------------------|------------|--|-----------------------|
| Power Meter NRP2 | 101919 | 01-Jul-23 (CTTL, No.J23X04256) | Jun-24 |
| Power sensor NRP-Z91 | 101547 | 01-Jul-23 (CTTL, No.J23X04256) | Jun-24 |
| Reference Probe EX3DV4 | SN 7307 | 19-Feb-24(SPEAG,No EX3-7307_Feb24) | Feb-25 |
| DAE4 | SN 771 | 02-Feb-24(CTTL-SPEAG,No.Z24-97011) | Feb-25 |
| Secondary Standards | ID # | Cal Date(Calibrated by, Certificate No.) | Scheduled Calibration |
| Signal Generator E4438C | MY49071430 | 01-Feb-24 (CTTL, No.J24X00893) | Jan-25 |
| Network Analyzer E5071C | MY46110673 | 26-Jan-24 (CTTL, No.J24X00894) | Jan-25 |

| | | | |
|----------------|-------------|-----------------------------------|-----------|
| | Name | Function | Signature |
| Calibrated by: | Zhao Jing | SAR Test Engineer | |
| Reviewed by: | Qi Dianyuan | SAR Project Leader | |
| Approved by: | Lu Bingsong | Deputy Director of the laboratory | |

Issued: Jun 12, 2024

This calibration certificate shall not be reproduced except in full without written approval of the laboratory.

Certificate No: Z24-97091

Page 1 of 8

Shenzhen Anbotek Compliance Laboratory Limited

Address: Sogood Industrial Zone Laboratory & 1/F. of Building D, Sogood Science and Technology Park, Sanwei Community, Hangcheng Subdistrict, Bao'an District, Shenzhen, Guangdong, China
Tel:(86)0755-26066440 Email:service@anbotek.com



Hotline
400-003-0500
www.anbotek.com





In Collaboration with

s p e a k
 CALIBRATION LABORATORY

Add: No.51 Xueyuan Road, Haidian District, Beijing, 100191, China
 Tel: +86-10-62304633-2079 Fax: +86-10-62304633-2504
 E-mail: ettl@chinattl.com Http://www.chinattl.cn

Glossary:

| | |
|-------|--|
| TSL | tissue simulating liquid |
| ConvF | sensitivity in TSL / NORM _{x,y,z} |
| N/A | not applicable or not measured |

Calibration is Performed According to the Following Standards:

- IEEE Std 1528-2013, "IEEE Recommended Practice for Determining the Peak Spatial-Averaged Specific Absorption Rate (SAR) in the Human Head from Wireless Communications Devices: Measurement Techniques", June 2013
- IEC 62209-1, "Procedure to measure the Specific Absorption Rate (SAR) For hand-held devices used in close proximity to the ear (frequency range of 300MHz to 3GHz)", February 2005
- IEC 62209-2, "Procedure to measure the Specific Absorption Rate (SAR) For wireless communication devices used in close proximity to the human body (frequency range of 30MHz to 6GHz)", March 2010
- KDB865664, SAR Measurement Requirements for 100 MHz to 6 GHz

Additional Documentation:

- DASY4/5 System Handbook

Methods Applied and Interpretation of Parameters:

- Measurement Conditions:** Further details are available from the Validation Report at the end of the certificate. All figures stated in the certificate are valid at the frequency indicated.
- Antenna Parameters with TSL:** The dipole is mounted with the spacer to position its feed point exactly below the center marking of the flat phantom section, with the arms oriented parallel to the body axis.
- Feed Point Impedance and Return Loss:** These parameters are measured with the dipole positioned under the liquid filled phantom. The impedance stated is transformed from the measurement at the SMA connector to the feed point. The Return Loss ensures low reflected power. No uncertainty required.
- Electrical Delay:** One-way delay between the SMA connector and the antenna feed point. No uncertainty required.
- SAR measured:** SAR measured at the stated antenna input power.
- SAR normalized:** SAR as measured, normalized to an input power of 1 W at the antenna connector.
- SAR for nominal TSL parameters:** The measured TSL parameters are used to calculate the nominal SAR result.

The reported uncertainty of measurement is stated as the standard uncertainty of Measurement multiplied by the coverage factor $k=2$, which for a normal distribution Corresponds to a coverage probability of approximately 95%.





In Collaboration with

s p e a g
 CALIBRATION LABORATORY

 Add: No.51 Xueyuan Road, Haidian District, Beijing, 100191, China
 Tel: +86-10-62304633-2079 Fax: +86-10-62304633-2504
 E-mail: cttl@chinattl.com Http://www.chinattl.cn

Measurement Conditions

DASY system configuration, as far as not given on page 1.

| | | |
|------------------------------|--------------------------|-------------|
| DASY Version | DASY52 | 52.8.8.1258 |
| Extrapolation | Advanced Extrapolation | |
| Phantom | Triple Flat Phantom 5.1C | |
| Distance Dipole Center - TSL | 10 mm | with Spacer |
| Zoom Scan Resolution | dx, dy, dz = 5 mm | |
| Frequency | 2450 MHz \pm 1 MHz | |

Head TSL parameters

The following parameters and calculations were applied.

| | Temperature | Permittivity | Conductivity |
|---|---------------------|----------------|----------------------|
| Nominal Head TSL parameters | 22.0 °C | 39.2 | 1.80 mho/m |
| Measured Head TSL parameters | (22.0 \pm 0.2) °C | 39.0 \pm 6 % | 1.77 mho/m \pm 6 % |
| Head TSL temperature change during test | <1.0 °C | ---- | ---- |

SAR result with Head TSL

| | | |
|---|--------------------|--------------------------------|
| SAR averaged over 1 cm ³ (1 g) of Head TSL | Condition | |
| SAR measured | 250 mW input power | 13.0 mW / g |
| SAR for nominal Head TSL parameters | normalized to 1W | 52.4 mW / g \pm 20.8 % (k=2) |
| SAR averaged over 10 cm ³ (10 g) of Head TSL | Condition | |
| SAR measured | 250 mW input power | 6.06 mW / g |
| SAR for nominal Head TSL parameters | normalized to 1W | 24.3 mW / g \pm 20.4 % (k=2) |

Body TSL parameters

The following parameters and calculations were applied.

| | Temperature | Permittivity | Conductivity |
|---|---------------------|----------------|----------------------|
| Nominal Body TSL parameters | 22.0 °C | 52.7 | 1.95 mho/m |
| Measured Body TSL parameters | (22.0 \pm 0.2) °C | 52.9 \pm 6 % | 1.97 mho/m \pm 6 % |
| Body TSL temperature change during test | <1.0 °C | — | — |

SAR result with Body TSL

| | | |
|---|--------------------|--------------------------------|
| SAR averaged over 1 cm ³ (1 g) of Body TSL | Condition | |
| SAR measured | 250 mW input power | 13.0 mW / g |
| SAR for nominal Body TSL parameters | normalized to 1W | 51.8 mW / g \pm 20.8 % (k=2) |
| SAR averaged over 10 cm ³ (10 g) of Body TSL | Condition | |
| SAR measured | 250 mW input power | 6.18 mW / g |
| SAR for nominal Body TSL parameters | normalized to 1W | 24.7 mW / g \pm 20.4 % (k=2) |





In Collaboration with
s p e a g
CALIBRATION LABORATORY

Add: No.51 Xueyuan Road, Haidian District, Beijing, 100191, China
Tel: +86-10-62304633-2079 Fax: +86-10-62304633-2504
E-mail: cttl@chinattl.com Http://www.chinattl.cn

Appendix

Antenna Parameters with Head TSL

| | |
|--------------------------------------|---------------|
| Impedance, transformed to feed point | 54.6Ω+ 2.77jΩ |
| Return Loss | - 25.8dB |

Antenna Parameters with Body TSL

| | |
|--------------------------------------|---------------|
| Impedance, transformed to feed point | 50.7Ω+ 4.28jΩ |
| Return Loss | - 27.3dB |

General Antenna Parameters and Design

| | |
|----------------------------------|----------|
| Electrical Delay (one direction) | 1.263 ns |
|----------------------------------|----------|

After long term use with 100W radiated power, only a slight warming of the dipole near the feedpoint can be measured.

The dipole is made of standard semirigid coaxial cable. The center conductor of the feeding line is directly connected to the second arm of the dipole. The antenna is therefore short-circuited for DC-signals. On some of the dipoles, small end caps are added to the dipole arms in order to improve matching when loaded according to the position as explained in the "Measurement Conditions" paragraph. The SAR data are not affected by this change. The overall dipole length is still according to the Standard.

No excessive force must be applied to the dipole arms, because they might bend or the soldered connections near the feedpoint may be damaged.

Additional EUT Data

| | |
|-----------------|-------|
| Manufactured by | SPEAG |
|-----------------|-------|





In Collaboration with
s p e a g
CALIBRATION LABORATORY

Add: No.51 Xueyuan Road, Haidian District, Beijing, 100191, China
Tel: +86-10-62304633-2079 Fax: +86-10-62304633-2504
E-mail: cttl@chinattl.com Http://www.chinattl.cn

DASY5 Validation Report for Head TSL

Date: 06.11.2024

Test Laboratory: CTTL, Beijing, China

DUT: Dipole 2450 MHz; Type: D2450V2; Serial: D2450V2 - SN: 910

Communication System: UID 0, CW; Frequency: 2450 MHz; Duty Cycle: 1:1

Medium parameters used: $f = 2450$ MHz; $\sigma = 1.767$ S/m; $\epsilon_r = 39.01$; $\rho = 1000$ kg/m³

Phantom section: Right Section

Measurement Standard: DASY5 (IEEE/IEC/ANSI C63.19-2007)

DASY5 Configuration:

- Probe: EX3DV4 - SN7307; ConvF(7.36, 7.36, 7.36); Calibrated: 2/19/2021;
- Sensor-Surface: 2mm (Mechanical Surface Detection)
- Electronics: DAE4 Sn771; Calibrated: 2021-02-02
- Phantom: Triple Flat Phantom 5.1C; Type: QD 000 P51 CA; Serial: 1161/1
- Measurement SW: DASY52, Version 52.8 (8); SEMCAD X Version 14.6.10 (7372)

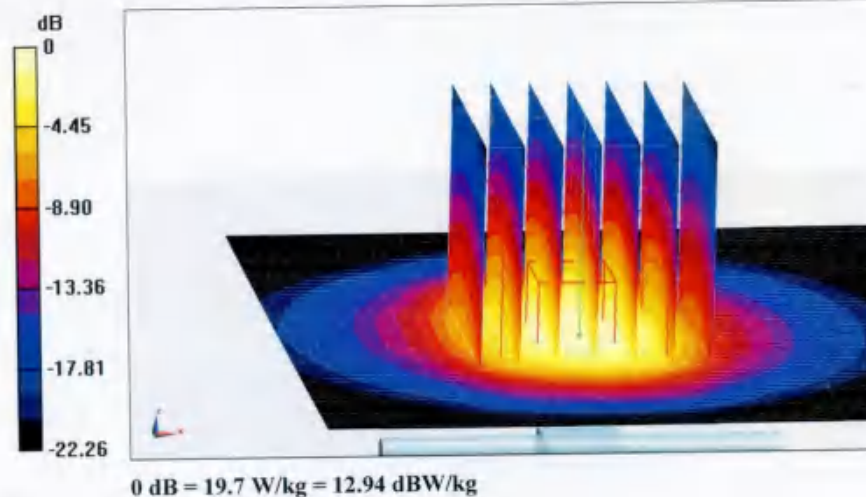
Dipole Calibration/Zoom Scan (7x7x7) (7x7x7)/Cube 0: Measurement grid: dx=5mm, dy=5mm, dz=5mm

Reference Value = 106.5 V/m; Power Drift = 0.02 dB

Peak SAR (extrapolated) = 26.7 W/kg

SAR(1 g) = 13 W/kg; SAR(10 g) = 6.06 W/kg

Maximum value of SAR (measured) = 19.7 W/kg



Certificate No: Z24-97091

Page 5 of 8

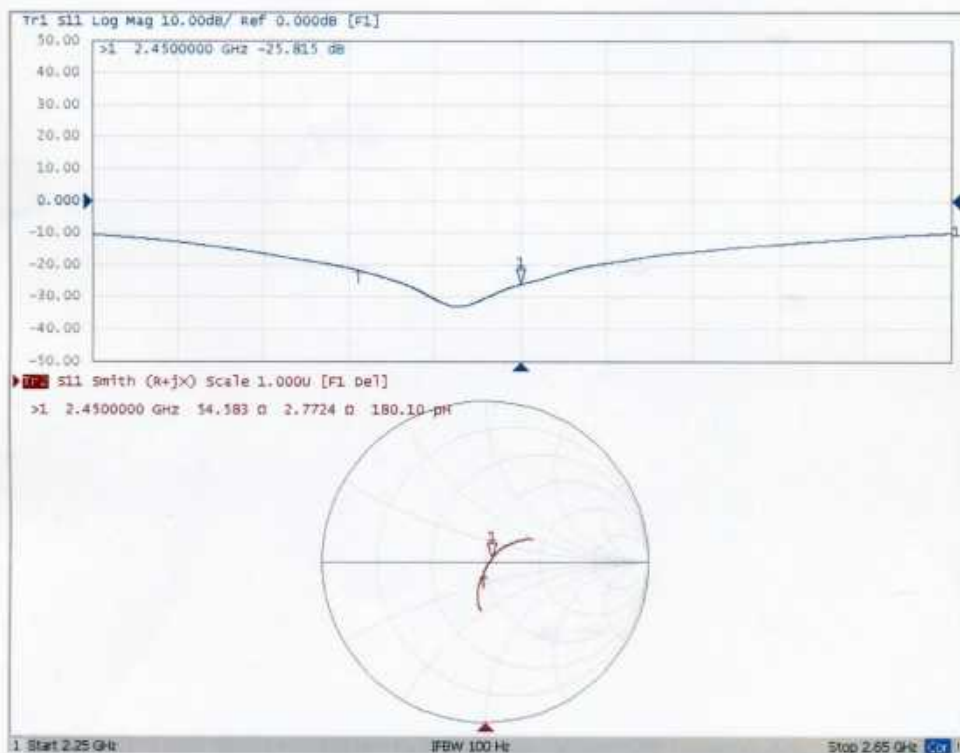




In Collaboration with
s p e a g
CALIBRATION LABORATORY

Add: No.51 Xueyuan Road, Haidian District, Beijing, 100191, China
Tel: +86-10-62304633-2079 Fax: +86-10-62304633-2504
E-mail: cttl@chinattl.com Http://www.chinattl.cn

Impedance Measurement Plot for Head TSL



Certificate No: Z24-97091

Page 6 of 8





In Collaboration with
s p e a g
CALIBRATION LABORATORY

Add: No.51 Xueyuan Road, Haidian District, Beijing, 100191, China
Tel: +86-10-62304633-2079 Fax: +86-10-62304633-2504
E-mail: cttl@chinattl.com Http://www.chinattl.cn

DASY5 Validation Report for Body TSL

Date: 06.11.2024

Test Laboratory: CTTL, Beijing, China

DUT: Dipole 2450 MHz; Type: D2450V2; Serial: D2450V2 - SN: 910

Communication System: UID 0, CW; Frequency: 2450 MHz; Duty Cycle: 1:1

Medium parameters used: $f = 2450$ MHz; $\sigma = 1.972$ S/m; $\epsilon_r = 52.92$; $\rho = 1000$ kg/m³

Phantom section: Center Section

Measurement Standard: DASY5 (IEEE/IEC/ANSI C63.19-2007)

DASY5 Configuration:

- Probe: EX3DV4 - SN7307; ConvF(7.22, 7.22, 7.22); Calibrated: 2/19/2021;
- Sensor-Surface: 2mm (Mechanical Surface Detection)
- Electronics: DAE4 Sn771; Calibrated: 2021-02-02
- Phantom: Triple Flat Phantom 5.1C; Type: QD 000 P51 CA; Serial: 1161/1
- Measurement SW: DASY52, Version 52.8 (8); SEMCAD X Version 14.6.10 (7372)

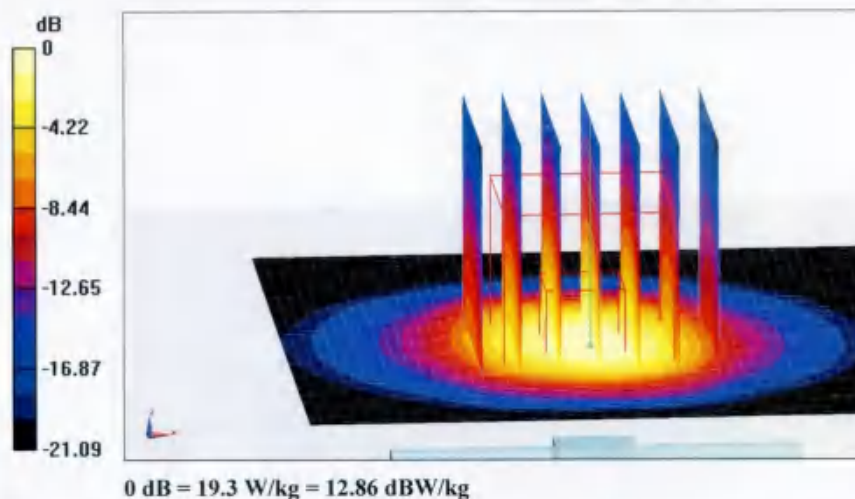
Dipole Calibration/Zoom Scan (7x7x7) (7x7x7)/Cube 0: Measurement grid: dx=5mm, dy=5mm, dz=5mm

Reference Value = 98.89 V/m; Power Drift = 0.03 dB

Peak SAR (extrapolated) = 25.6 W/kg

SAR(1 g) = 13 W/kg; SAR(10 g) = 6.18 W/kg

Maximum value of SAR (measured) = 19.3 W/kg



Certificate No: Z24-97091

Page 7 of 8

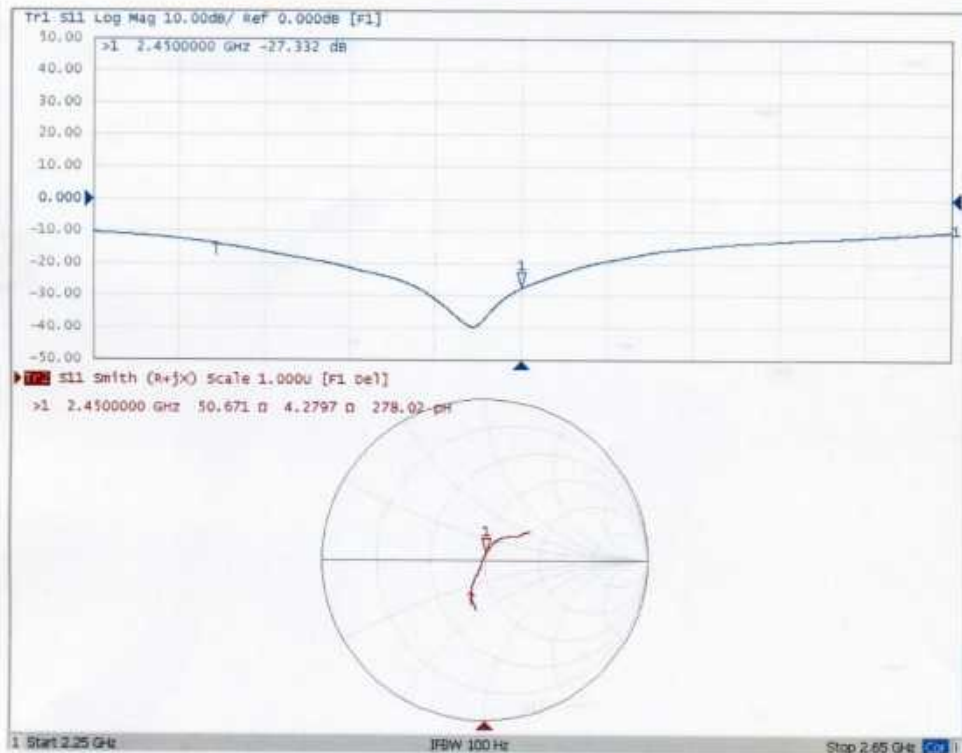




In Collaboration with
s p e a g
CALIBRATION LABORATORY

Add: No.51 Xueyuan Road, Haidian District, Beijing, 100191, China
Tel: +86-10-62304633-2079 Fax: +86-10-62304633-2504
E-mail: cttl@chinattl.com Http://www.chinattl.cn

Impedance Measurement Plot for Body TSL



Certificate No: Z24-97091

Page 8 of 8

Shenzhen Anbotek Compliance Laboratory Limited

Address: Sogood Industrial Zone Laboratory & 1/F. of Building D, Sogood Science and Technology Park, Sanwei Community, Hangcheng Subdistrict, Bao'an District, Shenzhen, Guangdong, China
Tel: (86)0755-26066440 Email: service@anbotek.com

Hotline
400-003-0500
www.anbotek.com



Calibration Laboratory of
Schmid & Partner
Engineering AG
Zeughausstrasse 43, 8004 Zurich, Switzerland



S Schweizerischer Kalibrierdienst
C Service suisse d'étalonnage
S Servizio svizzero di taratura
S Swiss Calibration Service

Accredited by the Swiss Accreditation Service (SAS)
The Swiss Accreditation Service is one of the signatories to the EA
Multilateral Agreement for the recognition of calibration certificates

Accreditation No.: **SCS 0108**

Client **Anbotek (Auden)**

Certificate No: **D5GHzV2-1160_Oct11**

CALIBRATION CERTIFICATE

Object: **D5GHzV2 - SN: 1160**

Calibration procedure(s): **QA CAL-22.v2**
Calibration procedure for dipole validation kits between 3-6 GHz

Calibration date: **October 02,2024**

This calibration certificate documents the traceability to national standards, which realize the physical units of measurements (SI).
The measurements and the uncertainties with confidence probability are given on the following pages and are part of the certificate.

All calibrations have been conducted in the closed laboratory facility: environment temperature $(22 \pm 3) ^\circ\text{C}$ and humidity $< 70\%$.

Calibration Equipment used (M&TE critical for calibration)

| Primary Standards | ID # | Cal Date (Certificate No.) | Scheduled Calibration |
|-----------------------------|--------------------|-----------------------------------|------------------------|
| Power meter EPM-442A | GB37480704 | 07-Oct-23 (No. 217-02020) | Oct-15 |
| Power sensor HP 8481A | US37292783 | 07-Oct-23 (No. 217-02020) | Oct-15 |
| Power sensor HP 8481A | MY41092317 | 07-Oct-23 (No. 217-02021) | Oct-15 |
| Reference 20 dB Attenuator | SN: 5058 (20k) | 01-Apr-24 (No. 217-02131) | Mar-16 |
| Type-N mismatch combination | SN: 5047.2 / 06327 | 01-Apr-24 (No. 217-02134) | Mar-16 |
| Reference Probe EX3DV4 | SN: 3503 | 30-Dec-23 (No. EX3-3503_Dec14) | Dec-15 |
| DAE4 24 | SN: 601 | 17-Aug-24 (No. DAE4-601_Aug15) | Aug-16 |
| Secondary Standards | ID # | Check Date (in house) | Scheduled Check |
| RF generator R&S SMT-06 | 100972 | 18-Jun-24 (in house check Jun-15) | In house check: Jun-18 |
| Network Analyzer HP 8753E | US37390585 S4206 | 15-Oct-23 (in house check Oct-14) | In house check: Oct-15 |

| | | | |
|----------------|-----------------------------|--|---------------|
| Calibrated by: | Name Leif Klysner | Function Laboratory Technician | Signature |
| Approved by: | Katja Pokovic | Technical Manager | |

Issued: October 6, 2024

This calibration certificate shall not be reproduced except in full without written approval of the laboratory.

Certificate No: D5GHzV2-1160_Oct11

Page 1 of 15

Shenzhen Anbotek Compliance Laboratory Limited

Address: Sogood Industrial Zone Laboratory & 1/F. of Building D, Sogood Science and Technology Park,
Sanwei Community, Hangcheng Subdistrict, Bao'an District, Shenzhen, Guangdong, China
Tel:(86)0755-26066440 Email:service@anbotek.com

Hotline
400-003-0500
www.anbotek.com



**Calibration Laboratory of
Schmid & Partner
Engineering AG**
Zeughausstrasse 43, 8004 Zurich, Switzerland



S Schweizerischer Kalibrierdienst
C Service suisse d'étalonnage
S Servizio svizzero di taratura
S Swiss Calibration Service

Accredited by the Swiss Accreditation Service (SAS)

The Swiss Accreditation Service is one of the signatories to the EA Multilateral Agreement for the recognition of calibration certificates

Accreditation No.: SCS 0108

Glossary:

| | |
|-------|---------------------------------|
| TSL | tissue simulating liquid |
| ConvF | sensitivity in TSL / NORM x,y,z |
| N/A | not applicable or not measured |

Calibration is Performed According to the Following Standards:

- IEEE Std 1528-2013, "IEEE Recommended Practice for Determining the Peak Spatial-Averaged Specific Absorption Rate (SAR) in the Human Head from Wireless Communications Devices: Measurement Techniques", June 2013
- IEC 62209-2, "Procedure to determine the Specific Absorption Rate (SAR) for wireless communication devices used in close proximity to the human body (frequency range of 30 MHz to 6 GHz)", March 2010
- KDB 865664, "SAR Measurement Requirements for 100 MHz to 6 GHz"

Additional Documentation:

- DASY4/5 System Handbook

Methods Applied and Interpretation of Parameters:

- Measurement Conditions:** Further details are available from the Validation Report at the end of the certificate. All figures stated in the certificate are valid at the frequency indicated
- Antenna Parameters with TSL:** The dipole is mounted with the spacer to position its feed point exactly below the center marking of the flat phantom section, with the arms oriented parallel to the body axis.
- Feed Point Impedance and Return Loss:** These parameters are measured with the dipole positioned under the liquid filled phantom. The impedance stated is transformed from the measurement at the SMA connector to the feed point. The Return Loss ensures low reflected power. No uncertainty required.
- Electrical Delay:** One-way delay between the SMA connector and the antenna feed point. No uncertainty required.
- SAR measured:** SAR measured at the stated antenna input power.
- SAR normalized:** SAR as measured, normalized to an input power of 1 W at the antenna connector.
- SAR for nominal TSL parameters:** The measured TSL parameters are used to calculate the nominal SAR result.

The reported uncertainty of measurement is stated as the standard uncertainty of measurement multiplied by the coverage factor $k=2$, which for a normal distribution corresponds to a coverage probability of approximately 95%.



Measurement Conditions

DASY system configuration, as far as not given on page 1.

| | | |
|------------------------------|--|----------------------------------|
| DASY Version | DASY5 | V52.8.8 |
| Extrapolation | Advanced Extrapolation | |
| Phantom | Modular Flat Phantom V5.0 | |
| Distance Dipole Center - TSL | 10 mm | with Spacer |
| Zoom Scan Resolution | dx, dy = 4.0 mm, dz = 1.4 mm | Graded Ratio = 1.4 (Z direction) |
| Frequency | 5200 MHz ± 1 MHz 5300 MHz ± 1 MHz 5600 MHz ± 1 MHz 5800 MHz ± 1 MHz | |

Head TSL parameters at 5200 MHz

The following parameters and calculations were applied.

| | Temperature | Permittivity | Conductivity |
|---|-----------------|--------------|------------------|
| Nominal Head TSL parameters | 22.0 °C | 36.0 | 4.66 mho/m |
| Measured Head TSL parameters | (22.0 ± 0.2) °C | 36.4 ± 6 % | 4.57 mho/m ± 6 % |
| Head TSL temperature change during test | < 0.5 °C | ----- | ----- |

SAR result with Head TSL at 5200 MHz

| SAR averaged over 1 cm ³ (1 g) of Head TSL | Condition | |
|---|--------------------|--------------------------|
| SAR measured | 100 mW input power | 8.06 W/kg |
| SAR for nominal Head TSL parameters | normalized to 1W | 80.7 W/kg ± 19.9 % (k=2) |

| SAR averaged over 10 cm ³ (10 g) of Head TSL | condition | |
|---|--------------------|--------------------------|
| SAR measured | 100 mW input power | 2.31 W/kg |
| SAR for nominal Head TSL parameters | normalized to 1W | 23.1 W/kg ± 19.5 % (k=2) |



Head TSL parameters at 5300 MHz

The following parameters and calculations were applied.

| | Temperature | Permittivity | Conductivity |
|---|-----------------|--------------|------------------|
| Nominal Head TSL parameters | 22.0 °C | 35.9 | 4.76 mho/m |
| Measured Head TSL parameters | (22.0 ± 0.2) °C | 36.2 ± 6 % | 4.68 mho/m ± 6 % |
| Head TSL temperature change during test | < 0.5 °C | — | — |

SAR result with Head TSL at 5300 MHz

| | | |
|---|--------------------|----------------------------|
| SAR averaged over 1 cm ³ (1 g) of Head TSL | Condition | |
| SAR measured | 100 mW input power | 8.26 W/kg |
| SAR for nominal Head TSL parameters | normalized to 1W | 82.7 W / kg ± 19.9 % (k=2) |

| | | |
|---|--------------------|--------------------------|
| SAR averaged over 10 cm ³ (10 g) of Head TSL | condition | |
| SAR measured | 100 mW input power | 2.39 W/kg |
| SAR for nominal Head TSL parameters | normalized to 1W | 23.9 W/kg ± 19.5 % (k=2) |

Head TSL parameters at 5600 MHz

The following parameters and calculations were applied.

| | Temperature | Permittivity | Conductivity |
|---|-----------------|--------------|------------------|
| Nominal Head TSL parameters | 22.0 °C | 35.5 | 5.07 mho/m |
| Measured Head TSL parameters | (22.0 ± 0.2) °C | 35.7 ± 6 % | 5.03 mho/m ± 6 % |
| Head TSL temperature change during test | < 0.5 °C | — | — |

SAR result with Head TSL at 5600 MHz

| | | |
|---|--------------------|--------------------------|
| SAR averaged over 1 cm ³ (1 g) of Head TSL | Condition | |
| SAR measured | 100 mW input power | 8.69 W/kg |
| SAR for nominal Head TSL parameters | normalized to 1W | 87.0 W/kg ± 19.9 % (k=2) |

| | | |
|---|--------------------|--------------------------|
| SAR averaged over 10 cm ³ (10 g) of Head TSL | condition | |
| SAR measured | 100 mW input power | 2.47 W/kg |
| SAR for nominal Head TSL parameters | normalized to 1W | 24.7 W/kg ± 19.5 % (k=2) |



Head TSL parameters at 5800 MHz

The following parameters and calculations were applied.

| | Temperature | Permittivity | Conductivity |
|---|-----------------|--------------|------------------|
| Nominal Head TSL parameters | 22.0 °C | 35.3 | 5.27 mho/m |
| Measured Head TSL parameters | (22.0 ± 0.2) °C | 35.3 ± 6 % | 5.26 mho/m ± 6 % |
| Head TSL temperature change during test | < 0.5 °C | --- | --- |

SAR result with Head TSL at 5800 MHz

| SAR averaged over 1 cm ³ (1 g) of Head TSL | Condition | |
|---|--------------------|--------------------------|
| SAR measured | 100 mW input power | 8.20 W/kg |
| SAR for nominal Head TSL parameters | normalized to 1W | 82.0 W/kg ± 19.9 % (k=2) |

| SAR averaged over 10 cm ³ (10 g) of Head TSL | condition | |
|---|--------------------|--------------------------|
| SAR measured | 100 mW input power | 2.31 W/kg |
| SAR for nominal Head TSL parameters | normalized to 1W | 23.1 W/kg ± 19.5 % (k=2) |



Body TSL parameters at 5200 MHz

The following parameters and calculations were applied.

| | Temperature | Permittivity | Conductivity |
|---|-----------------|--------------|------------------|
| Nominal Body TSL parameters | 22.0 °C | 49.0 | 5.30 mho/m |
| Measured Body TSL parameters | (22.0 ± 0.2) °C | 47.9 ± 6 % | 5.35 mho/m ± 6 % |
| Body TSL temperature change during test | < 0.5 °C | — | — |

SAR result with Body TSL at 5200 MHz

| SAR averaged over 1 cm ³ (1 g) of Body TSL | Condition | |
|---|--------------------|--------------------------|
| SAR measured | 100 mW input power | 7.81 W/kg |
| SAR for nominal Body TSL parameters | normalized to 1W | 77.8 W/kg ± 19.9 % (k=2) |

| SAR averaged over 10 cm ³ (10 g) of Body TSL | condition | |
|---|--------------------|--------------------------|
| SAR measured | 100 mW input power | 2.18 W/kg |
| SAR for nominal Body TSL parameters | normalized to 1W | 21.7 W/kg ± 19.5 % (k=2) |

Body TSL parameters at 5300 MHz

The following parameters and calculations were applied.

| | Temperature | Permittivity | Conductivity |
|---|-----------------|--------------|------------------|
| Nominal Body TSL parameters | 22.0 °C | 48.9 | 5.42 mho/m |
| Measured Body TSL parameters | (22.0 ± 0.2) °C | 47.7 ± 6 % | 5.49 mho/m ± 6 % |
| Body TSL temperature change during test | < 0.5 °C | — | — |

SAR result with Body TSL at 5300 MHz

| SAR averaged over 1 cm ³ (1 g) of Body TSL | Condition | |
|---|--------------------|--------------------------|
| SAR measured | 100 mW input power | 7.88 W/kg |
| SAR for nominal Body TSL parameters | normalized to 1W | 78.4 W/kg ± 19.9 % (k=2) |

| SAR averaged over 10 cm ³ (10 g) of Body TSL | condition | |
|---|--------------------|--------------------------|
| SAR measured | 100 mW input power | 2.20 W/kg |
| SAR for nominal Body TSL parameters | normalized to 1W | 21.9 W/kg ± 19.5 % (k=2) |



Body TSL parameters at 5600 MHz

The following parameters and calculations were applied:

| | Temperature | Permittivity | Conductivity |
|---|-----------------|--------------|------------------|
| Nominal Body TSL parameters | 22.0 °C | 48.5 | 5.77 mho/m |
| Measured Body TSL parameters | (22.0 ± 0.2) °C | 46.7 ± 6 % | 5.99 mho/m ± 6 % |
| Body TSL temperature change during test | < 0.5 °C | --- | --- |

SAR result with Body TSL at 5600 MHz

| SAR averaged over 1 cm ³ (1 g) of Body TSL | Condition | |
|---|--------------------|--------------------------|
| SAR measured | 100 mW input power | 8.20 W/kg |
| SAR for nominal Body TSL parameters | normalized to 1W | 81.5 W/kg ± 19.9 % (k=2) |

| SAR averaged over 10 cm ³ (10 g) of Body TSL | condition | |
|---|--------------------|--------------------------|
| SAR measured | 100 mW input power | 2.30 W/kg |
| SAR for nominal Body TSL parameters | normalized to 1W | 22.8 W/kg ± 19.5 % (k=2) |

Body TSL parameters at 5800 MHz

The following parameters and calculations were applied:

| | Temperature | Permittivity | Conductivity |
|---|-----------------|--------------|------------------|
| Nominal Body TSL parameters | 22.0 °C | 48.2 | 6.00 mho/m |
| Measured Body TSL parameters | (22.0 ± 0.2) °C | 46.4 ± 6 % | 6.27 mho/m ± 6 % |
| Body TSL temperature change during test | < 0.5 °C | --- | --- |

SAR result with Body TSL at 5800 MHz

| SAR averaged over 1 cm ³ (1 g) of Body TSL | Condition | |
|---|--------------------|--------------------------|
| SAR measured | 100 mW input power | 7.88 W/kg |
| SAR for nominal Body TSL parameters | normalized to 1W | 78.3 W/kg ± 19.9 % (k=2) |

| SAR averaged over 10 cm ³ (10 g) of Body TSL | condition | |
|---|--------------------|--------------------------|
| SAR measured | 100 mW input power | 2.20 W/kg |
| SAR for nominal Body TSL parameters | normalized to 1W | 21.8 W/kg ± 19.5 % (k=2) |



Appendix (Additional assessments outside the scope of SCS 0108)

Antenna Parameters with Head TSL at 5200 MHz

| | |
|--------------------------------------|---------------------------------|
| Impedance, transformed to feed point | 48.1 Ω - 8.5 $\mu\Omega$ |
| Return Loss | - 21.0 dB |

Antenna Parameters with Head TSL at 5300 MHz

| | |
|--------------------------------------|---------------------------------|
| Impedance, transformed to feed point | 50.2 Ω - 5.2 $\mu\Omega$ |
| Return Loss | - 25.7 dB |

Antenna Parameters with Head TSL at 5600 MHz

| | |
|--------------------------------------|---------------------------------|
| Impedance, transformed to feed point | 54.8 Ω - 2.5 $\mu\Omega$ |
| Return Loss | - 25.7 dB |

Antenna Parameters with Head TSL at 5800 MHz

| | |
|--------------------------------------|---------------------------------|
| Impedance, transformed to feed point | 53.0 Ω - 3.0 $\mu\Omega$ |
| Return Loss | - 27.7 dB |



Antenna Parameters with Body TSL at 5200 MHz

| | |
|--------------------------------------|---------------------------------|
| Impedance, transformed to feed point | 48.6 Ω - 6.8 $\mu\Omega$ |
| Return Loss | - 23.0 dB |

Antenna Parameters with Body TSL at 5300 MHz

| | |
|--------------------------------------|---------------------------------|
| Impedance, transformed to feed point | 49.0 Ω - 4.2 $\mu\Omega$ |
| Return Loss | - 27.1 dB |

Antenna Parameters with Body TSL at 5600 MHz

| | |
|--------------------------------------|---------------------------------|
| Impedance, transformed to feed point | 56.2 Ω - 0.7 $\mu\Omega$ |
| Return Loss | - 24.6 dB |

Antenna Parameters with Body TSL at 5800 MHz

| | |
|--------------------------------------|---------------------------------|
| Impedance, transformed to feed point | 55.9 Ω - 1.7 $\mu\Omega$ |
| Return Loss | - 24.8 dB |

General Antenna Parameters and Design

| | |
|----------------------------------|----------|
| Electrical Delay (one direction) | 1.199 ns |
|----------------------------------|----------|

After long term use with 100W radiated power, only a slight warming of the dipole near the feedpoint can be measured.

The dipole is made of standard semirigid coaxial cable. The center conductor of the feeding line is directly connected to the second arm of the dipole. The antenna is therefore short-circuited for DC-signals. On some of the dipoles, small end caps are added to the dipole arms in order to improve matching when loaded according to the position as explained in the "Measurement Conditions" paragraph. The SAR data are not affected by this change. The overall dipole length is still according to the Standard.

No excessive force must be applied to the dipole arms, because they might bend or the soldered connections near the feedpoint may be damaged.

Additional EUT Data

| | |
|-----------------|---------------|
| Manufactured by | SPEAG |
| Manufactured on | June 06, 2013 |



DASY5 Validation Report for Head TSL

Date: 24.09.2024

Test Laboratory: SPEAG, Zurich, Switzerland

DUT: Dipole 5GHz; Type: D5GHzV2; Serial: D5GHzV2 - SN: 1160

Communication System: UID 0 - CW; Frequency: 5200 MHz; Frequency: 5300 MHz; Frequency: 5600 MHz; Frequency: 5800 MHz

Medium parameters used: $f = 5200$ MHz; $\sigma = 4.57$ S/m; $\epsilon_r = 36.4$; $\rho = 1000$ kg/m³. Medium parameters used: $f = 5300$ MHz; $\sigma = 4.68$ S/m; $\epsilon_r = 36.2$; $\rho = 1000$ kg/m³. Medium parameters used: $f = 5600$ MHz; $\sigma = 5.03$ S/m; $\epsilon_r = 35.7$; $\rho = 1000$ kg/m³. Medium parameters used: $f = 5800$ MHz; $\sigma = 5.26$ S/m; $\epsilon_r = 35.3$; $\rho = 1000$ kg/m³

Phantom section: Flat Section

Measurement Standard: DASY5 (IEEE/IEC/ANSI C63.19-2011)

DASY52 Configuration:

- Probe: EX3DV4 - SN3503; ConvF(5.51, 5.51, 5.51); Calibrated: 10.10.2024, ConvF(5.21, 5.21, 5.21); Calibrated: 10.10.2024, ConvF(4.92, 4.92, 4.92); Calibrated: 10.10.2024, ConvF(4.9, 4.9, 4.9); Calibrated: 10.10.2024.
- Sensor-Surface: 1.4mm (Mechanical Surface Detection)
- Electronics: DAE4 Sn601; Calibrated: 17.08.2024
- Phantom: Flat Phantom 5.0 (front); Type: QD000P50/AA; Serial: 1001
- DASY52 52.8.8(1222); SEMCAD X 14.6.10(7331)

Dipole Calibration for Head Tissue/Pin=100mW, dist=10mm, f=5200 MHz/Zoom Scan,

dist=1.4mm (8x8x7)/Cube 0: Measurement grid: dx=4mm, dy=4mm, dz=1.4mm

Reference Value = 64.41 V/m; Power Drift = 0.08 dB

Peak SAR (extrapolated) = 29.3 W/kg

SAR(1 g) = 8.06 W/kg; SAR(10 g) = 2.31 W/kg

Maximum value of SAR (measured) = 18.7 W/kg

Dipole Calibration for Head Tissue/Pin=100mW, dist=10mm, f=5300 MHz/Zoom Scan,

dist=1.4mm (8x8x7)/Cube 0: Measurement grid: dx=4mm, dy=4mm, dz=1.4mm

Reference Value = 65.31 V/m; Power Drift = 0.05 dB

Peak SAR (extrapolated) = 31.1 W/kg

SAR(1 g) = 8.26 W/kg; SAR(10 g) = 2.39 W/kg

Maximum value of SAR (measured) = 19.4 W/kg

Dipole Calibration for Head Tissue/Pin=100mW, dist=10mm, f=5600 MHz/Zoom Scan,

dist=1.4mm (8x8x7)/Cube 0: Measurement grid: dx=4mm, dy=4mm, dz=1.4mm

Reference Value = 65.34 V/m; Power Drift = 0.03 dB

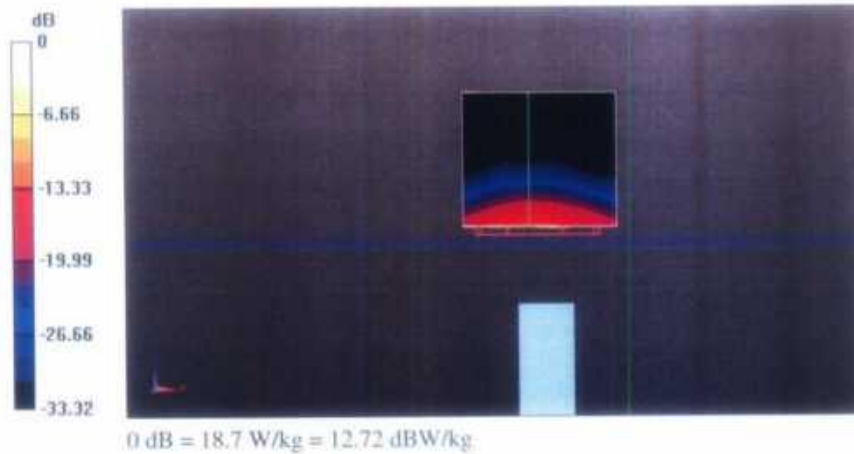
Peak SAR (extrapolated) = 34.7 W/kg

SAR(1 g) = 8.69 W/kg; SAR(10 g) = 2.47 W/kg

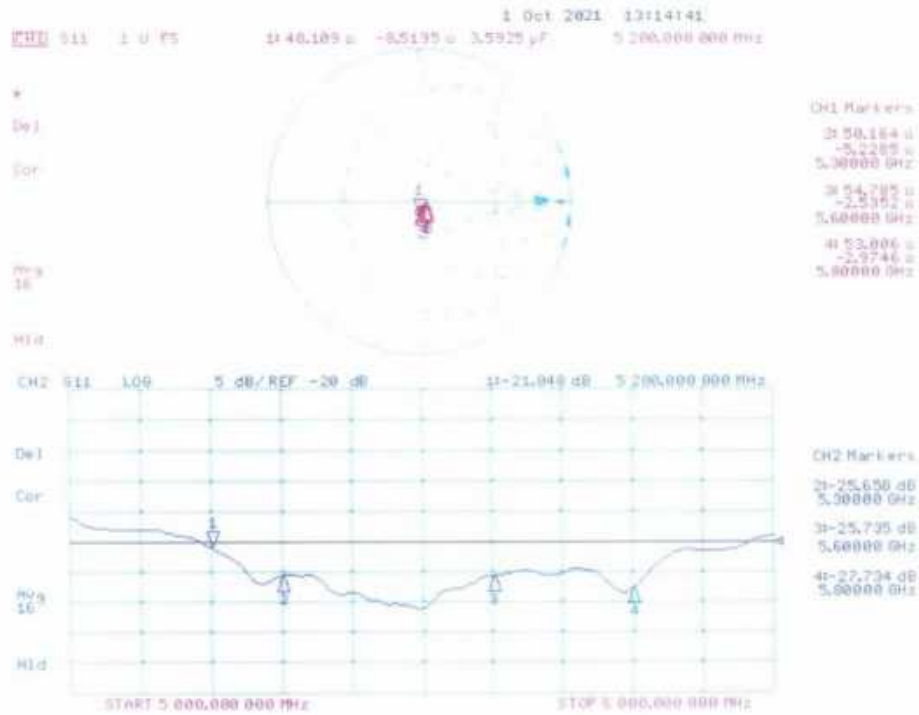
Maximum value of SAR (measured) = 21.0 W/kg



Dipole Calibration for Head Tissue/Pin=100mW, dist=10mm, f=5800 MHz/Zoom Scan, dist=1.4mm (8x8x7)/Cube 0: Measurement grid: dx=4mm, dy=4mm, dz=1.4mm
Reference Value = 62.41 V/m; Power Drift = 0.03 dB
Peak SAR (extrapolated) = 34.5 W/kg
SAR(1 g) = 8.2 W/kg; SAR(10 g) = 2.31 W/kg
Maximum value of SAR (measured) = 20.5 W/kg



Impedance Measurement Plot for Head TSL



DASY5 Validation Report for Body TSL

Date: 05.10.2024

Test Laboratory: SPEAG, Zurich, Switzerland

DUT: Dipole 5GHz; Type: D5GHzV2; Serial: D5GHzV2 - SN: 1160

Communication System: UID 0 - CW; Frequency: 5200 MHz; Frequency: 5300 MHz; Frequency: 5600 MHz; Frequency: 5800 MHz

Medium parameters used: $f = 5200$ MHz; $\sigma = 5.35$ S/m; $\epsilon_r = 47.9$; $\rho = 1000$ kg/m³, Medium parameters used: $f = 5300$ MHz; $\sigma = 5.49$ S/m; $\epsilon_r = 47.7$; $\rho = 1000$ kg/m³, Medium parameters used: $f = 5600$ MHz; $\sigma = 5.99$ S/m; $\epsilon_r = 46.7$; $\rho = 1000$ kg/m³, Medium parameters used: $f = 5800$ MHz; $\sigma = 6.27$ S/m; $\epsilon_r = 46.4$; $\rho = 1000$ kg/m³

Phantom section: Flat Section

Measurement Standard: DASY5 (IEEE/IEC/ANSI C63.19-2011)

DASY52 Configuration:

- Probe: EX3DV4 - SN3503; ConvF(4.95, 4.95, 4.95); Calibrated: 10.10.2024, ConvF(4.78, 4.78, 4.78); Calibrated: 10.10.2024; ConvF(4.35, 4.35, 4.35); Calibrated: 10.10.2024, ConvF(4.32, 4.32, 4.32); Calibrated: 10.10.2024;
- Sensor-Surface: 1.4mm (Mechanical Surface Detection)
- Electronics: DAE4 Sn601; Calibrated: 17.08.2024
- Phantom: Flat Phantom 5.0 (back); Type: QD000P50AA; Serial: 1002
- DASY52 52.8.8(1222); SEMCAD X [4.6.10(7331)]

Dipole Calibration for Body Tissue/Pin=100mW, dist=10mm, f=5200 MHz/Zoom Scan,**dist=1.4mm (8x8x7)/Cube 0:** Measurement grid: dx=4mm, dy=4mm, dz=1.4mm

Reference Value = 67.32 V/m; Power Drift = -0.04 dB

Peak SAR (extrapolated) = 30.4 W/kg

SAR(1 g) = 7.81 W/kg; SAR(10 g) = 2.18 W/kg

Maximum value of SAR (measured) = 18.2 W/kg

Dipole Calibration for Body Tissue/Pin=100mW, dist=10mm, f=5300 MHz/Zoom Scan,**dist=1.4mm (8x8x7)/Cube 0:** Measurement grid: dx=4mm, dy=4mm, dz=1.4mm

Reference Value = 67.22 V/m; Power Drift = -0.06 dB

Peak SAR (extrapolated) = 31.6 W/kg

SAR(1 g) = 7.88 W/kg; SAR(10 g) = 2.2 W/kg

Maximum value of SAR (measured) = 18.8 W/kg

Dipole Calibration for Body Tissue/Pin=100mW, dist=10mm, f=5600 MHz/Zoom Scan,**dist=1.4mm (8x8x7)/Cube 0:** Measurement grid: dx=4mm, dy=4mm, dz=1.4mm

Reference Value = 67.36 V/m; Power Drift = -0.03 dB

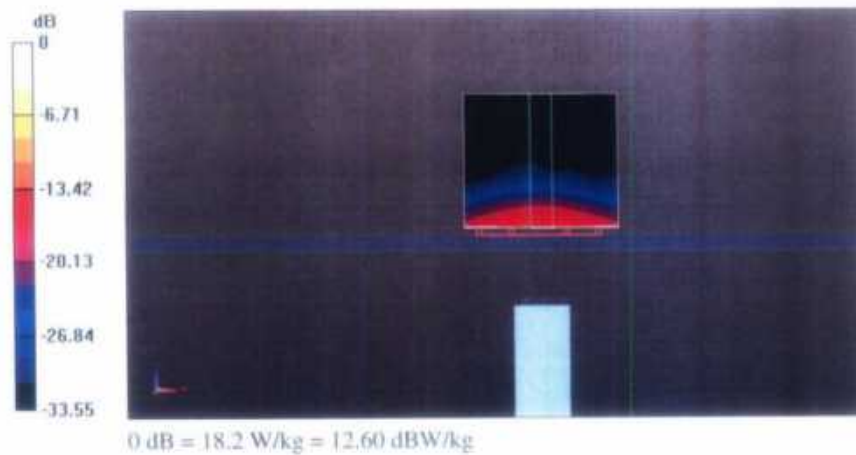
Peak SAR (extrapolated) = 36.6 W/kg

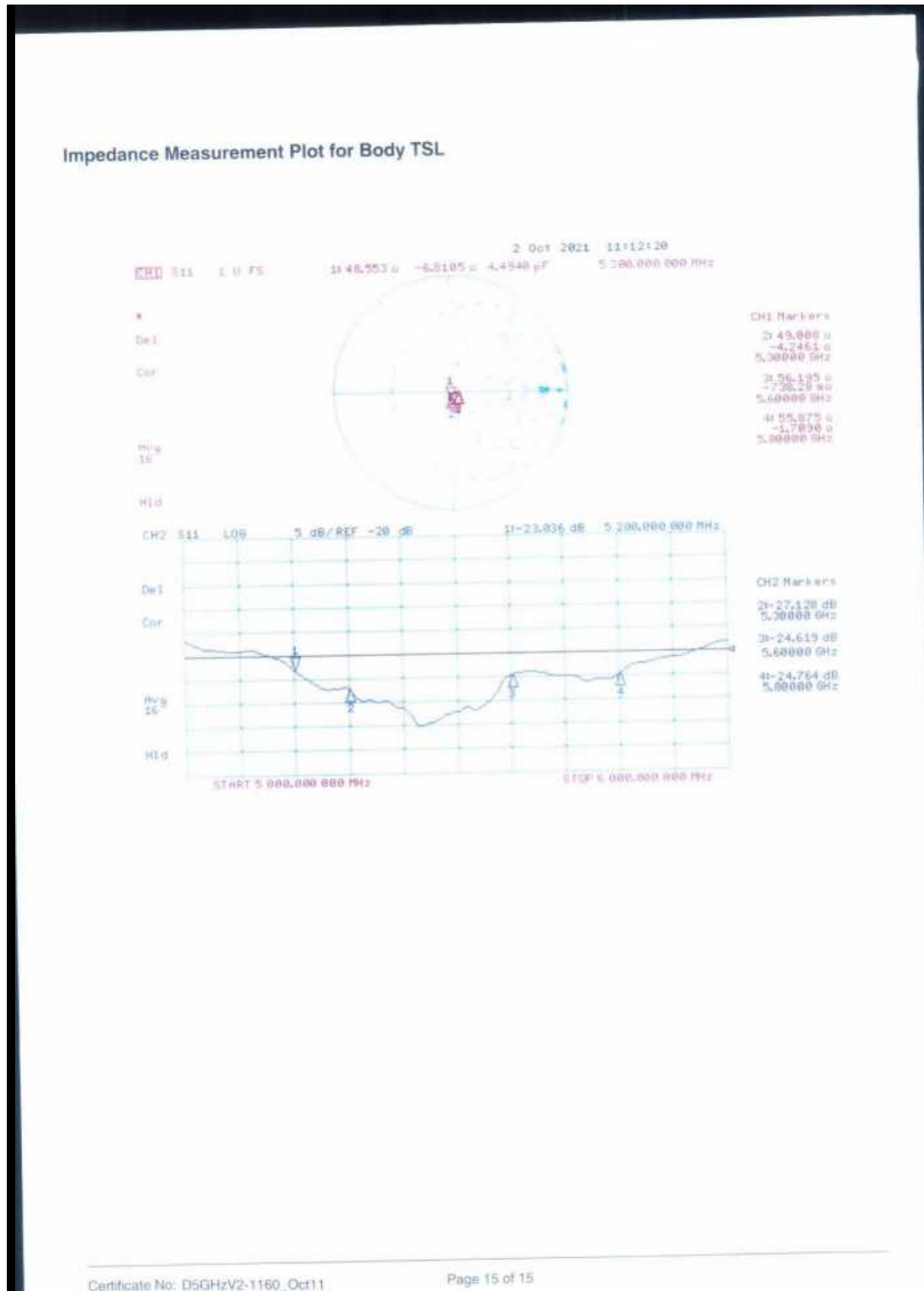
SAR(1 g) = 8.2 W/kg; SAR(10 g) = 2.3 W/kg

Maximum value of SAR (measured) = 20.2 W/kg



Dipole Calibration for Body Tissue/Pin=100mW, dist=10mm, f=5800 MHz/Zoom Scan,
dist=1.4mm (8x8x7)/Cube 0: Measurement grid: dx=4mm, dy=4mm, dz=1.4mm
Reference Value = 65.22 V/m; Power Drift = -0.03 dB
Peak SAR (extrapolated) = 37.1 W/kg
SAR(1 g) = 7.88 W/kg; SAR(10 g) = 2.2 W/kg
Maximum value of SAR (measured) = 19.7 W/kg





*****END OF REPORT*****

Shenzhen Anbotek Compliance Laboratory Limited

Address: Sogood Industrial Zone Laboratory & 1/F. of Building D, Sogood Science and Technology Park,
Sanwei Community, Hangcheng Subdistrict, Bao'an District, Shenzhen, Guangdong, China
Tel: (86) 0755-26066440 Email: service@anbotek.com

Hotline
400-003-0500
www.anbotek.com

