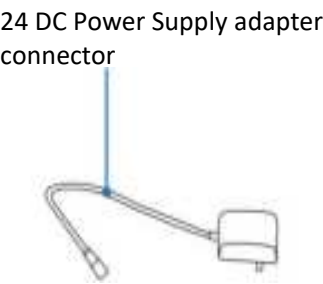


Airthereal
HEPA AIR PURIFIER
AGH400/AGH400-PET
User Manual



COMPONENTS



滤网类型

SPECIFICATIONS

Power Supply	DC 24V
Rated Power	42W
CADR	400CFM（680m³/h）
Applicable Area	430sq.ft.(40m³）max.
Fan Speed	4-Level
Filter Lifetime	3500h
Filter Structure	Pre-Filter+ H13 True HEPA Filter/Odor Decomposition Filter



**Meets California
ozone emissions limit.
CARB certified.**

65 警示标语

IMPORTANT SAFETY INSTRUCTIONS

IMPORTANT: Please read and comply with all of the instructions and warnings in the manual before using. Failure to comply with the instructions and warnings provided herein may result in inaccurate results and/or damage to the product itself.

General Safety

Only use the air purifier as described in this manual.

- Ensure the plug fits properly into an AC power outlet.
- When not being used, turn the air purifier off and disconnect it from its power source by unplugging it from the electrical outlet.
- DO NOT operate the unit if its cord or plug is damaged. It may result in damage to the unit or injury; It must be replaced by the manufacturer or another qualified person so as to avoid all risks.
- NOT recommend using an extension cord. If necessary, the extension cord should be the same size as the original one.
- Thoroughly dry your hands before the operation.
- DO NOT immerse the air purifier in water or liquids. It may result in damage to the appliance, electric shock, or fire.
- DO NOT use the air purifier outdoors. This appliance is designed for indoor use only.
- DO NOT use the air purifier in an enclosed space where
- DO NOT use in an area where toxic vapors, flammable dust, or oxygen tanks are present.
- DO NOT insert fingers or objects into the air outlet.
- Child supervision is required while the air purifier is on.
- Do not allow children to play on or near the air purifier.

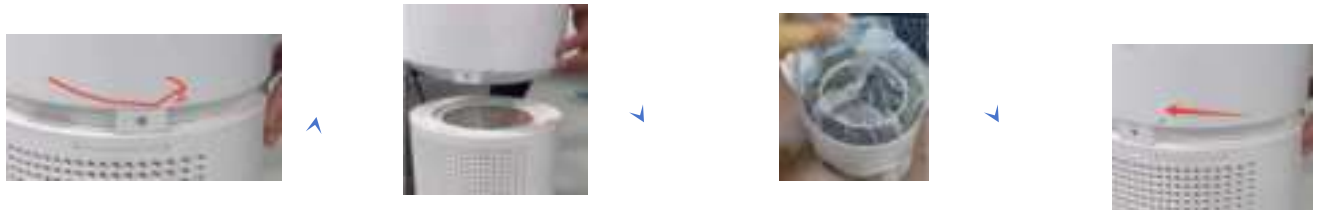
Use & Care

- Always make sure to place the air purifier on a flat, level surface before operation.
- Always allow 15 inches (38 cm) of clearance on all sides of the purifier.
- DO NOT ROUTE CORD UNDER FURNITURE OR APPLIANCES.
- Do not run the power cord under carpeting.
- Do not cover the cord with throw rugs, runners, or similar coverings. Place the power cord away from high-traffic areas.
- DO NOT sit on or place anything on top of the purifier.
- DO NOT place the air purifier near sources of heat, such as stoves, ovens, radiators, or computers.
- DO NOT use this appliance with indoor smoke-type insect repellents or in places with oily

residues, burning incense, or chemical fumes.

- Always unplug the appliance from the power supply before servicing.
- Cleaning of product components requires the power to be turned off to avoid electric shock or injury.
- DO NOT attempt to repair this device in any way or use any replacement components or parts to modify the air purifier. Contact Customer Support immediately if your appliance is no longer working.
- Only use Airthereal replacement filters for this unit.
- If you experience any problems while operating the air purifier, refer to the Troubleshooting section in the manual. If the problem is NOT solved, contact Customer Support.
- If the unit is damaged or NOT functioning properly, discontinue use and contact Customer Support.

INSTALLATION INSTRUCTIONS



1. Turn off the top of the product and remove the filter
2. Remove the plastic packaging on the surface of the filter
3. Place the filter back in, place the top machine on the corresponding groove, and screw it .
4. Place the air purifier where desired with at least 15 inches of open space around all sides of the purifier.

(Place at least 15 inches away from TVs, radios, and other electronic products.

Electromagnetic interference from certain electronics may cause product malfunction. Only use the unit on firm and flat surfaces. Flimsy or slanted surfaces may result in abnormal noise and vibrations.)

OPERATION

1. Insert the power cord into an electrical outlet.

Please make sure the operating voltage is the same as the parametric label.



WARNING

Follow these instructions to reduce the risk of serious injury or death and to reduce risk of damaging the unit

Follow these instructions to reduce the risk of serious injury or death and to reduce the risk of damaging the unit.

2. Setting the work mode you need.

Touch-control Panel



Power Button

- Press this button to turn on/off the unit.
- Auto mode will be turned on by default when the unit is powered on.
- The PM2.5 indicator shows the real-time PM2.5 value.

After powering on, it takes about 20 seconds to activate the PM 2.5 Indicator. After 20s, the air quality indicator will illuminate and display the real-time PM2.5 value and corresponding Air quality indicator color.

PM2.5($\mu\text{g}/\text{m}^3$)	Levels of health concern	AQI(EPA of USA)	Fan Speed	LED
0.0-12.0	Good	0-50	1	Green
12.1-35.4	Medium	51-100	2	Orange
35.5-150	Unhealthy	101-150	3	Red
>150	Very Unhealthy	>150	4	Red

The instant PM2.5 value is one of the core references for the indoor air quality index (AQI).

Regarding the AQI, working modes, and light indicators, Airthereal Air Purifiers comply with EPA regulations.

For additional information, please reference the United States Environmental Protection Agency(EPA):https://cfpub.epa.gov/airnow/index.cfm?action=aqi_brochure.index#particle



Timer

Press to switch to setting timer. (Timer can be set from 1-12 hours or to NO TIMER, corresponding to values 1-12 and 00 on the LED display.)



Sleep Mode

Press to turn on / off the Sleep Mode.

NOTE:

- Sleep Mode uses the lowest fan speed.
- When Sleep Mode is activated, the Air Quality Indicator is disabled.
- Tap the Sleep Mode again to exit Sleep Mode.



Filter Reset

When the Filter Reset button lights up red, it is a reminder to check and change the air filter.

Note : after replacing the filter need to press the button for 3 seconds to reset.



Child-Lock

Press and hold the Child-Lock button for 3 seconds to Lock and unlock.



Auto Mode

Press the Auto button to enter and exit Auto mode, (the wind speed gear is controlled by automatic), Press the speed button to exit Auto mode, and the wind speed will work in 1 gear.



Fan Speed

Press to start air circulation. 4 fan speeds are available , Each press will cycle between 1 →2→3 →4 (the display will show between F1-F2-F3-F4)



WiFi

After the unit is powered on, please press and hold the sleep buttons for 3 seconds to enter the connection mode. The WiFi icon will flash, which means the unit is ready to connect. Once you have set up the connection, the WiFi icon will stop flashing and become illuminated in white.



Air Quality Indicator

PM2.5 indicator shows real-time PM2.5 value.

MAINTENANCE



When the button lights up red, it is a reminder to check and change the air filter.

We recommend replacing the air filter every 6-8 months for optimal use. It's time to replace the air filter when the below signals appear.

1. Increased noise.
2. Decreased airflow.
3. Clogged filters.

Purchase a new Airthereal Air Filter Replacement: Visit: www.airthereal.com for replacement filters for this unit.

Replace the Air Filter

1. Switch off the power, rotate the top unit counterclockwise, and remove it upwards.
2. Rotate the bottom cover as instructed and remove the old filter to open the new one.
3. Place the top machine in the groove and screw it clockwise to complete the installation.



4. Power the unit on. Press and hold the button for 3 seconds to reset the replacement reminder.

CLEANING


Unplug the power cord before cleaning.

The plastic shell should be cleaned with a soft, damp cloth. Add mild detergent as needed.

Remove the filter and clean the dust and hair adsorbed on the surface of the filter.
For optimal maintenance, clean the unit every 2 months.

Cleaning the pre-filter

When a lot of pet hair has been adsorbed on the surface of the filter, we can replace the pre-filter.

1. Take out the filter.
2. Remove the surface pre-filter.
3. Cleaning it with a Vacuum cleaner.
4. Reinstall the filter and start work.
5. Press this button  for 3 seconds to reset the filter.



(补充用吸尘器吸滤芯表面的毛的图)



TROUBLESHOOTING

Problem	Cause	Solution
No power or response.	Unit is not plugged into an electrical outlet.	Connect the plug to a powered electric outlet.
	Outlet is not working properly.	Try plugging the air purifier into a different outlet.
	Power cord is damaged.	Immediately discontinue use and contact Customer Support.
	Air purifier is defective or malfunctioning.	
Any display of the LED numbers.	Auto Mode has just been turned on.	Allow the air purifier to run for 20S. They will change a stabilized status based on the detected air quality
	Unit is defective or malfunctioning.	Immediately discontinue use and contact Customer Support.
Unusual noise while operating.	Dirty filters.	Replace the air filters as instructed in the Replacing the Air Filters section .
	Filters installed improperly.	Properly place the filter as noted in the Getting Started and Replacing the Air Filters

		sections.
	Foreign objects inside the unit.	Immediately discontinue use and contact Customer Support. DO NOT attempt to open the air purifier.
	Flimsy or slanted surfaces result in abnormal noise and vibrations.	Place air purifier on hard, flat surfaces
Significantly reduced airflow .	Not enough space around the unit.	Ensure that there is at least 15 inches(38 cm) between the unit and other objects.
Poor air purification quality.	Surrounding area exceeds the applicable area.	DO NOT use the air purifier outdoors. This appliance is designed for indoor use only.
	Air inlet or outlet is blocked.	Remove objects that block the air inlet or outlet.
	Filter(s) not properly placed in housing.	Properly place the filter as noted in the Getting Started and Replacing the Filters sections.

LIMITED WARRANTY

Airthereal warrants Ozone Generator for **1** year from the date of purchase.

For more information please visit www.airthereal.com/warranty.

- What's covered?

Defects due to faulty materials and/or workmanship of the product

- What's not covered?

1. Damage caused by the owner when attempting to fix or alter the product by himself or herself.

2. Damage caused by misuse, abuse, neglect, alterations or unauthorized repair.

3. Natural depreciation.

- Warranty Period

Warranty becomes effective from the date of original purchase and will last for 1 year.

- Who's covered?

This limited warranty is only effective for the original purchaser It is non-transferable.

- How to request warranty services?

To obtain the benefit of this warranty, please email support@airthereal.com.

Our customer service will address your issue as soon as possible!

FCC STATEMENT

This device complies with Part 15 of the FCC Rules. Operation is subject to the following two conditions:

1. This device may not cause harmful interference, and
2. This device must accept any interference received, including interference that may cause undesired operation.

Any changes or modifications not expressly approved by the party responsible for compliance could void the user's authority to operate this equipment. This equipment has been tested and found to comply with the limits for a Class B digital device, pursuant to Part 15 of the FCC Rules. These limits are designed to provide reasonable protection against harmful interference in a residential installation. This

equipment generates, uses and can radiate radio frequency energy and, if not installed and used in accordance with the instructions, may cause harmful interference to radio communications. However, there is no guarantee that interference will not occur in a particular installation. If this equipment does cause harmful interference to radio or television reception, which can be determined by turning the equipment on and off, the user is encouraged to try to correct the interference by one of the following measures:

- Reorient or relocate the receiving antenna.
- Connect the equipment into an outlet on a circuit different from that to which the receiver is connected.
- Increase the separation between the equipment and receiver.
- Consult the dealer or an experienced radio/TV technician for help.

FCC RADIATION EXPOSURE STATEMENT

This equipment complies with FCC radiation exposure limits set forth for an uncontrolled environment. End users must follow the specific operating instructions for satisfying RF exposure compliance. To maintain compliance with FCC RF exposure compliance requirements, please follow operation instructions as documented in this manual. This transmitter must not be co located or operating in conjunction with any other antenna or transmitter. This equipment should be installed and operated with a minimum distance of 20 cm between the radiator and your body. The availability of some specific channels and/or operational frequency bands are country dependent and are firmware programmed at the factory to match the intended destination. The firmware setting is not accessible by the end user.

ATTRIBUTIONS

Apple App Store is a trademark of Apple Inc. Google, Android, and Google Play are trademarks of Google LLC. Wi-Fi® is a registered trademark of Wi-Fi Alliance®. Amazon, Alexa and all related logos are trademarks of Amazon.com, Inc. or its affiliates. iOS is a registered trademark of Cisco Systems, Inc. and/or its affiliates in the United States and certain other countries. The Bluetooth® word mark and logos are registered trademarks owned by Bluetooth SIG, Inc. and any use of such marks by Arovast Corporation is under license.