

Marine/PowerSports Tower Technical Specs:

- Speaker Power: 1200 Watt MAX
- Amp Power: 2 x 250 Watt MAX @ 4 Ohms (2 x 125 Watt RMS)
- Amp Type: 2-Channel, Class D
- Marine Grade Waterproof Rating: IP-X6
- Speaker Type: Polypropylene Cone, Butyl Rubber Surround (x2)
- Tweeter Type: Neodymium Dome (x2)
- Impedance: 4 Ohm
- Magnet Type: 32 oz. Circuit
- Mid-Woofer Voice Coil Type: 1", TIL
- Sensitivity: 92 dB +/- 2 dB @ 1M/1W
- Anti-Thump Turn-On
- Soft Turn On/Off
- T.H.D: <0.05%
- S/N Ratio: >80dB
- Channel Separation: >65dB
- Fuse: 1 x 15A
- Power Supply: DC 12V
- Universal Mounting Brackets Roll-Bar / Roll-Cage Diameter: 1.75" ~ 3.0" -inches
- 1.75"~2" for Motorsports/ Powersports Application.
- 2.25"~3" for Marine Application.
- Speaker Dimensions: 8.1" x 8.9" x 10.5" -inches, with Bracket (-Each)

California Prop 65 Warning

⚠ WARNING:

This product contains Di (2-ethylhexyl) phthalate (DEHP) which is known to the state of California to cause cancer birth defects and other reproductive harm. Do not ingest.

For more info go to: www.P65warnings.ca.gov

PYLE

PyleUSA.com

Questions? Issues?

We are here to help!

Phone: (1) 718-535-1800

Email: support@pyleusa.com

PowerSports

PYLE

PyleUSA.com



PLUTV63BTA

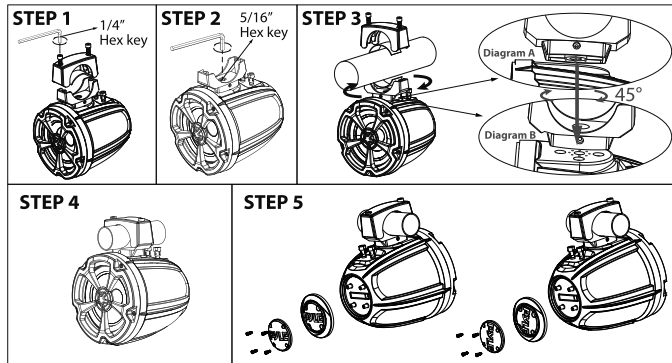
**6.5" Water-Resistant Rated Marine /
Off-Road Wireless BT Speakers**

- Amplified Vehicle Speaker System for ATV,
UTV, 4x4, Jeep (1200 Watt)

USER GUIDE

PLUTV63BTA Installation

Speaker Mounting suggestion as below:



Step 1: Removing the top half of clamp

Put the **PLUTV63BTA** speaker in a safe place.
Using the 1/4" Hex key, remove the top clamp bolts.

Step2/3: To adjust mounting clamp angle and speaker position

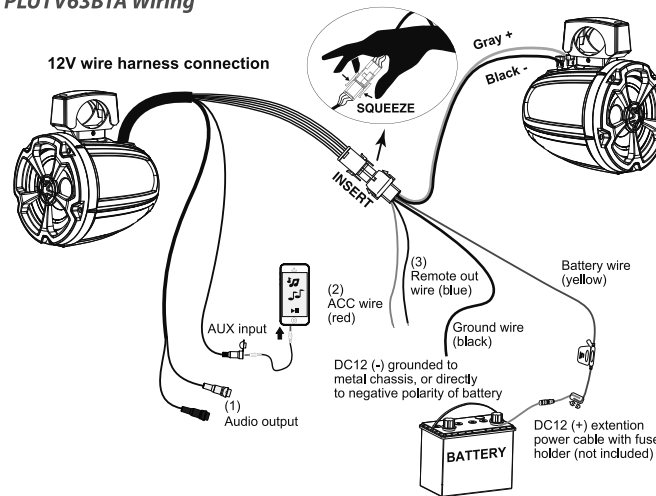
Diagram A is to show there are four round pins underneath the bottom base of aluminum die cast clamp, which can be inserted and fixed to four round notch holes on top of plastic cabinet as diagram B shows by every 45 degrees adjustment either at clockwise or counter clockwise direction. Through such design, user can change the angle of swivel clamp, use the 5/16" hex key to loose the center screw a little bit and lift the bottom clamp to twist speaker angle by every 45 degrees to get the optimal angle you want. Then re-making sure the pins on base of bottom clamp are inserted and sits on notch holes on top of plastic cabinet flat and seamlessly. Then re-tighten the center hex screw to secure the bottom clamp strongly.

Step 4: Securing clamp bolts

Using the correct rubber pads (labeled for O.D.) install on both top and bottom half of clamps. 3.15" x 1.2" x 0.2" rubber pads for 1.75" O.D. 3.15" x 1.2" x 0.08" rubber pads for 2" - 3" O.D. Using the 1/4" Hex bit socket hand tighten the bolts evenly (both sides should have the same spacing between bolts).

Step 5: Option for adjustable PYLE logo—Unbolt the screws first, adjust the logo direction, then re-fix screws.

PLUTV63BTA Wiring



1. Connect the RCA plugs (red/white) to an external amplifier for audio output.
2. Connect the ACC wire (red) to the accessory power of the vehicle as ON/OFF switch of the speakers.
3. Connect the remote out wire (blue) to an external amplifier as ON/OFF switch of the amplifier.

Features:

- Pro Audio PowerSport Speakers
- Amplified (Active) Speaker System
- Wireless BT Music Streaming Ability
- Bridged Sound System: (2) x 6.5" Woofers + (2) x 1" Tweeters
- Marine Grade Rated Construction
- Weatherproof & Water-Resistant Housing
- 2-Way Full Range Stereo Sound Reproduction
- Built-in Digital Sound Processing Amplifier
- Integrated Speaker Power & Wiring Harness
- Compact Size & High-Powered Output
- Impressive Bass Response
- Aux (3.5mm) Input Jack
- Connect & Stream Audio from External Devices
- Sleek Design, Machine Molded Speaker Cabinet Housing
- Rugged, Universal Mount Bracket Design for Roll-Bar / Roll-Cage
- Used for Off-Road Outdoor Vehicles: ATV, UTV, 4x4, Jeeps, Marine Watercraft
- Pre-Amp RCA Out to Any OEM/Factory-Made Mono-Block/Full-Range Amplifier

Wireless BT Connectivity:

- Simple & Hassle-Free Pairing
- Instant Wireless Audio Streaming Ability
- Works with All of Today's Latest Devices
- Smartphones, Tablets, Laptops, etc.
- Wireless BT Version: V5.0
- Wireless BT Network Name: 'PyleUSA'
- Wireless Range: 30+ ft.
- *Wireless BT Receiver Module Built-Into Amplifier of Main / Active Speaker

What's in the Box:

- (1) 6.5" Amplified Main Speaker
- (1) 6.5" Passive Support Speaker
- (2) 3" Aluminum Mounting Brackets (Pre-Installed on Speakers)
- (4) 3.15" x 1.2" x 0.2" Inches Rubber Pads
- (4) 3.15" x 1.2" x 0.08" Inches Rubber Pads
- (4) M8x55mm Hexagon Socket Head Cap Screws
- (4) M8x35mm Hexagon Socket Head Cap Screws (Pre-Installed)
- (1) Power Wire Harness

FCC WARNING

This device complies with part 15 of the FCC Rules. Operation is subject to the following two conditions: (1) this device may not cause harmful interference, and (2) this device must accept any interference received, including interference that may cause undesired operation.

Any changes or modifications not expressly approved by the party responsible for compliance could void the user's authority to operate the equipment.

NOTE: This equipment has been tested and found to comply with the limits for a Class B digital device, pursuant to Part 15 of the FCC Rules. These limits are designed to provide reasonable protection against harmful interference in a residential installation. This equipment generates, uses and can radiate radio frequency energy and, if not installed and used in accordance with the instructions, may cause harmful interference to radio communications. However, there is no guarantee that interference will not occur in a particular installation.

If this equipment does cause harmful interference to radio or television reception,

which can be determined by turning the equipment off and on, the user is encouraged to try to correct the interference by one or more of the following measures:

- Reorient or relocate the receiving antenna.
- Increase the separation between the equipment and receiver.
- Connect the equipment into an outlet on a circuit different from that to which the receiver is connected.
- Consult the dealer or an experienced radio/TV technician for help.

To maintain compliance with FCC's RF Exposure guidelines, This equipment should be installed and operated with minimum distance between 20cm the radiator your body: Use only the supplied antenna.