

Document ID	https://docs.google.com/document/d/11yGOBV3KzpLo5o6WCA2CuN_QPSc1H_Vp/edit#
Responsible	Oystein Moldsvor
Classification	Confidential

Revision History Table		
Named revision	Date	Comment:
01	2022-04-28	First version shared with TÜV SÜD

External Photos

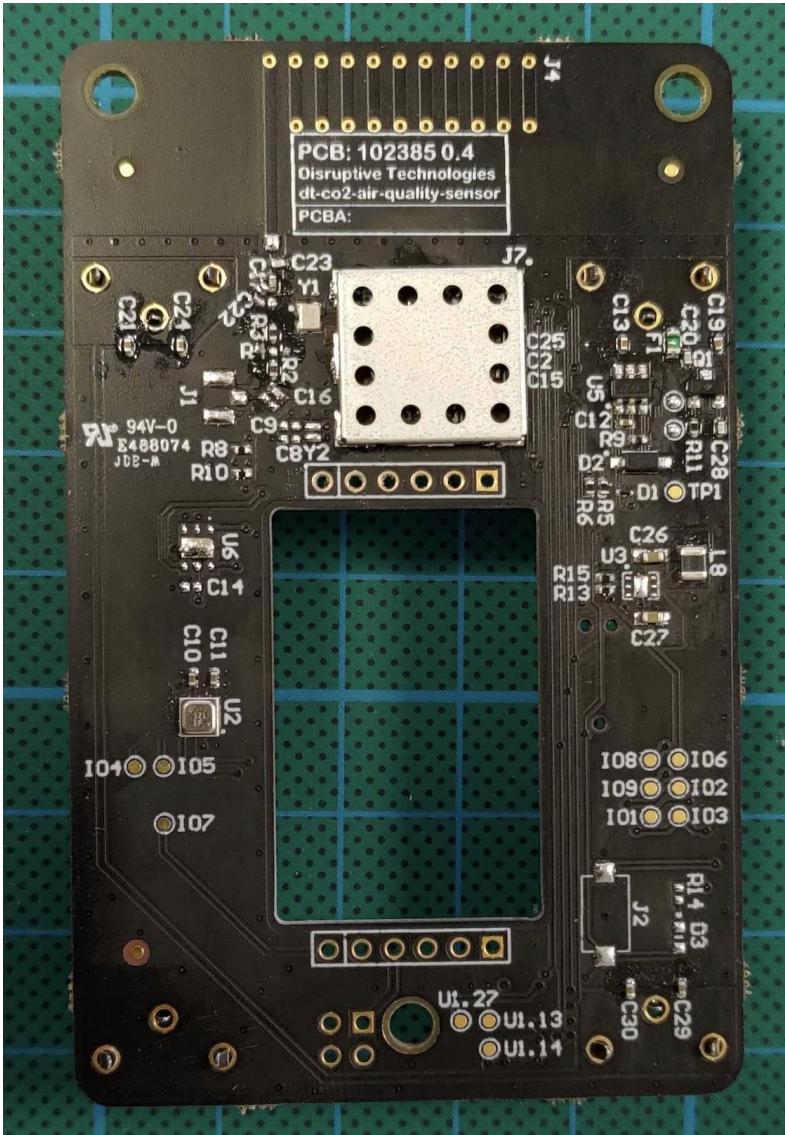


Figure 1: Picture of **component side** of part 102540 - Sensor RF module 2AA (US).
The RF shield box is mounted.
The antenna location is at the top of the PCB

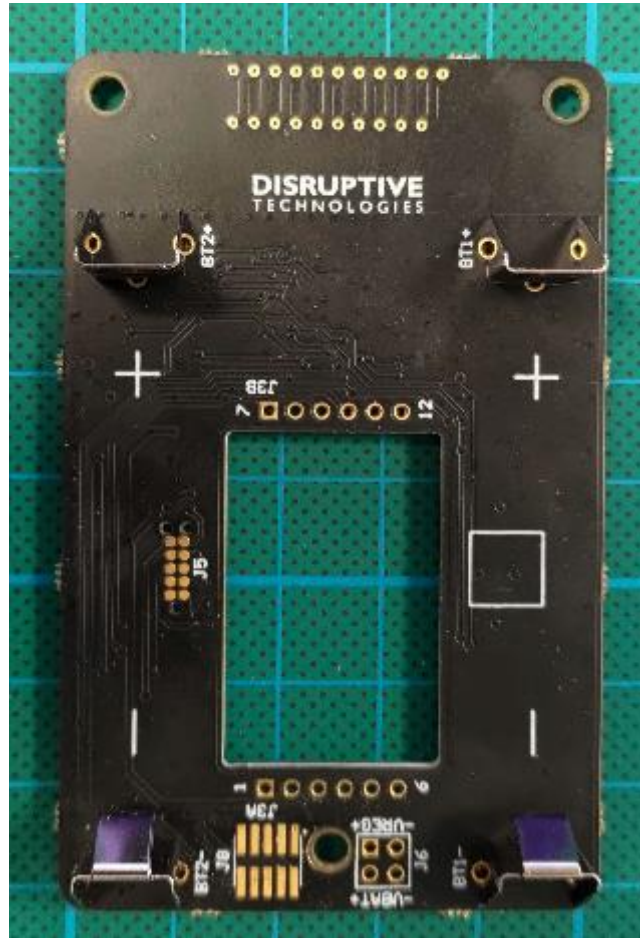


Figure 2: Picture of **bottom side** of part 102540 - Sensor RF module 2AA (US).
The antenna location is at the top of the PCB



Figure 3: Picture of the label location