

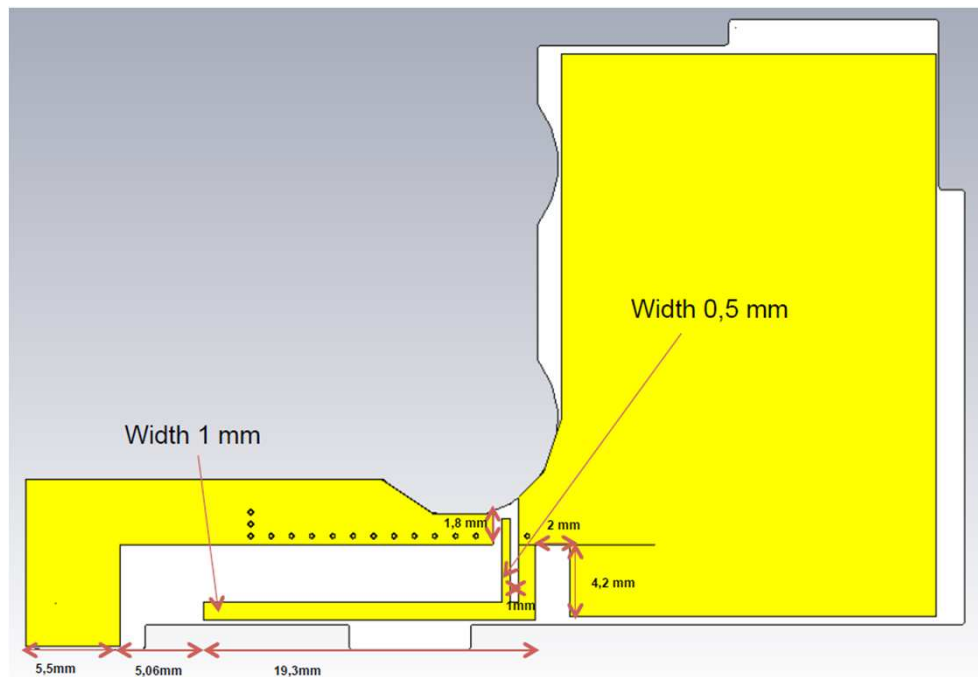
SEQUOIA: 3D radiation patterns @2441MHz



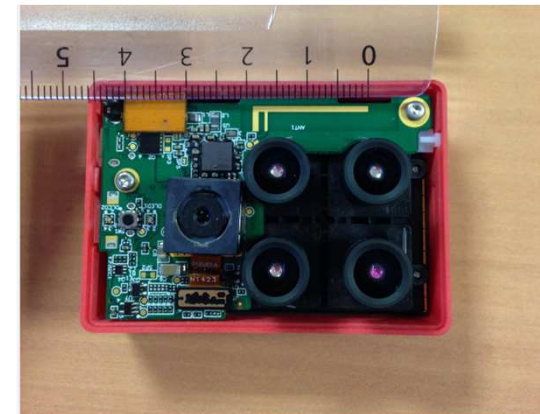
Measured equipments



- Sequoia's antenna is an IFA.
- It's positioned on the first PCB, near to the picture sensors



Dimensions of the antenna

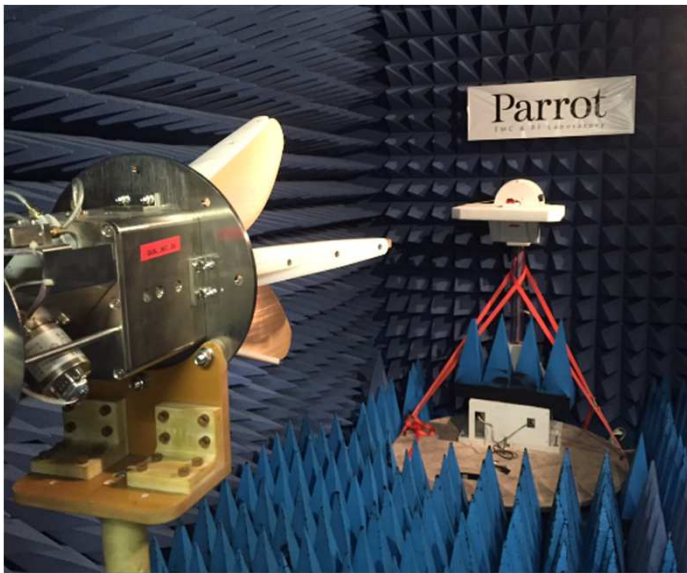


Position of the antenne in the product

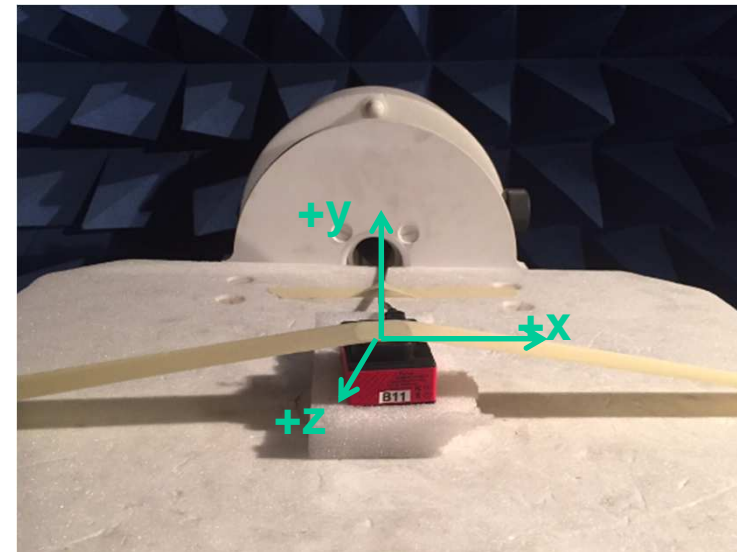
Measurement conditions



- The measurement was made at Parrot radio test laboratory, with Diagraph3D system
- The product was set in a permanent emission mode of a CW signal @2441MHz
- Conducted output power is 0dBm
- Angular resolution is : 10°
- Measurement uncertainty : $\pm 1\text{dB}$



Banc Diagraph3D



Coordinate system

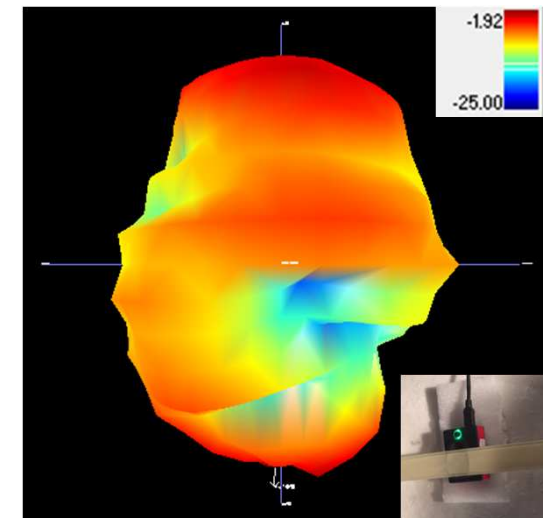
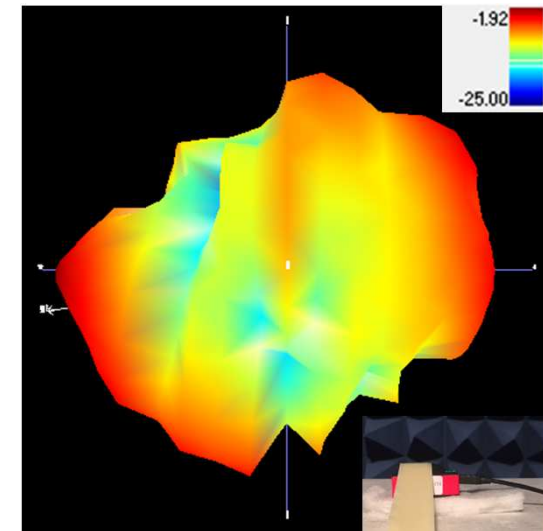
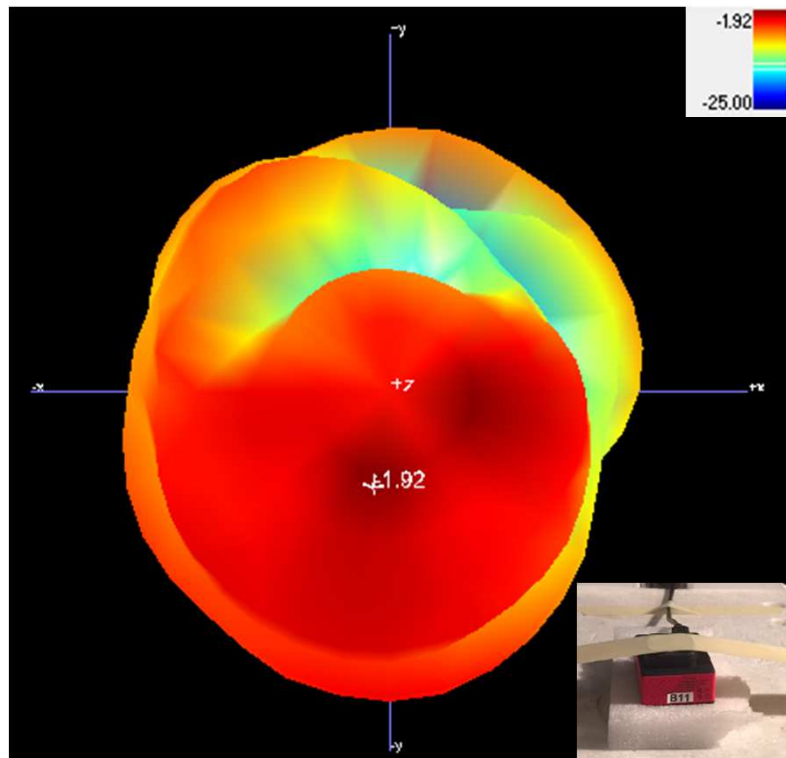
Sequoia: 3D radiation pattern @ 2.441GHz



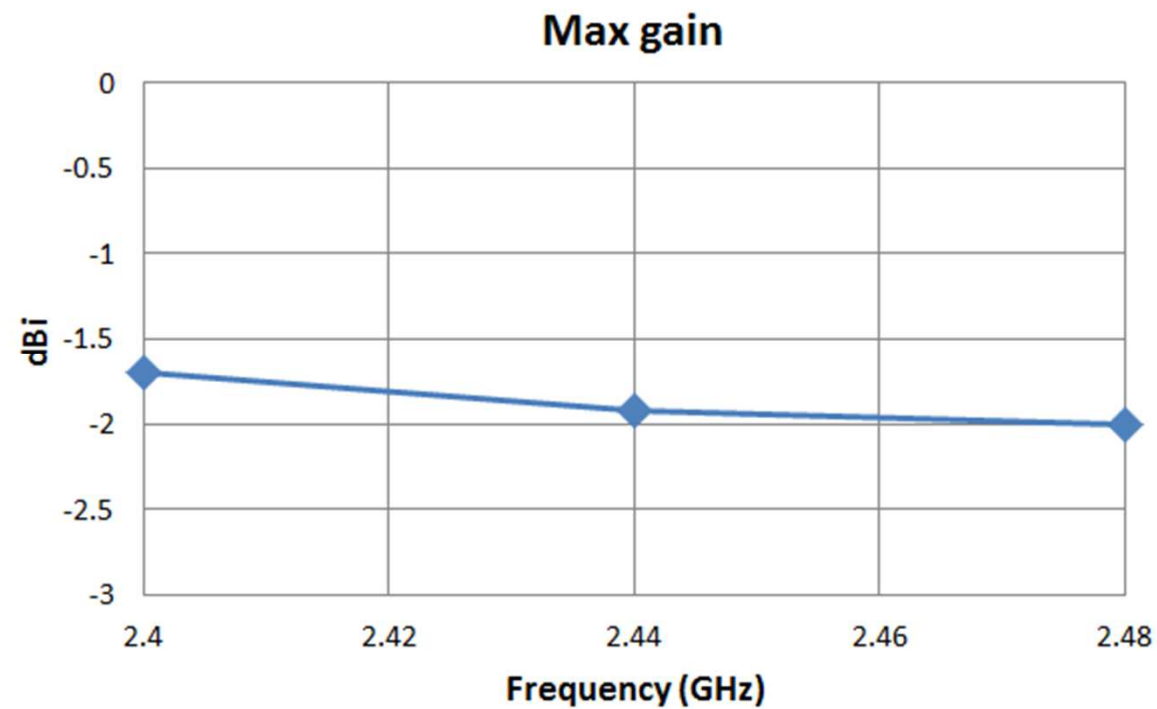
Max gain @2441MHz= **-1.92dBi**

Min gain @2441MHz= -20.16dBi

Mean gain @2441MHz = -7dBi



Sequoia: Max gain VS frequency





www.parrot.com

PARROT S.A.
174, quai de Jemmapes
F-75010 Paris
T: +33 1 48 03 60 60