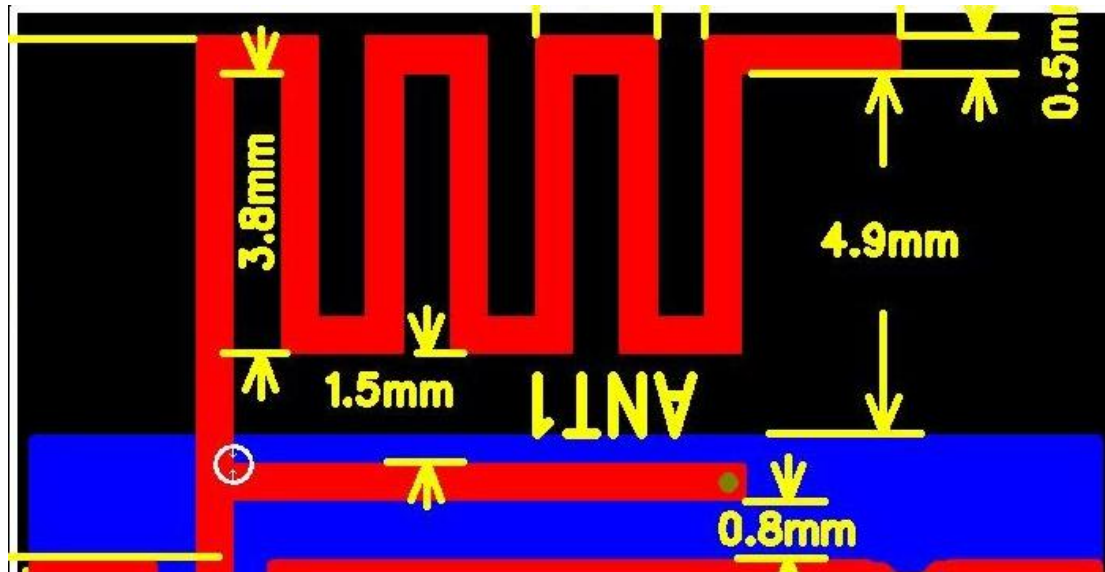


YizhaoMicroelectronics(Hangzhou)Co.,Ltd.ShenzhenBranch
Add:Room 501, 5th Floor, Area A, Building 1, No. 57, Jianger Road,
Changhe Street, Binjiang District, Hangzhou City, Zhejiang Province

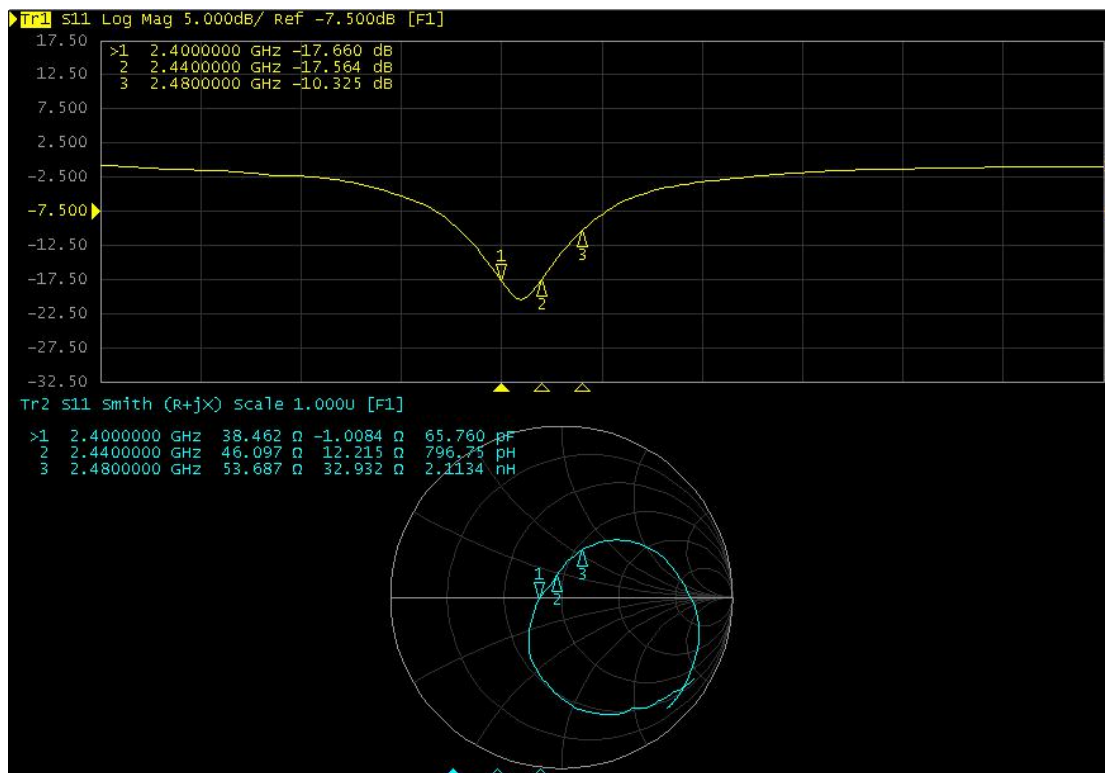
- Normal Module Wiggles antenna design specification:

This Wiggles antenna is used in normal module with whole layout board which size is 13mm*18mm and thickness is 1.0mm (FR4)



3-1 Normal Module Wiggles Antenna

The performance of S11 as blow show and the working frequency band cover 2.4G ISM .

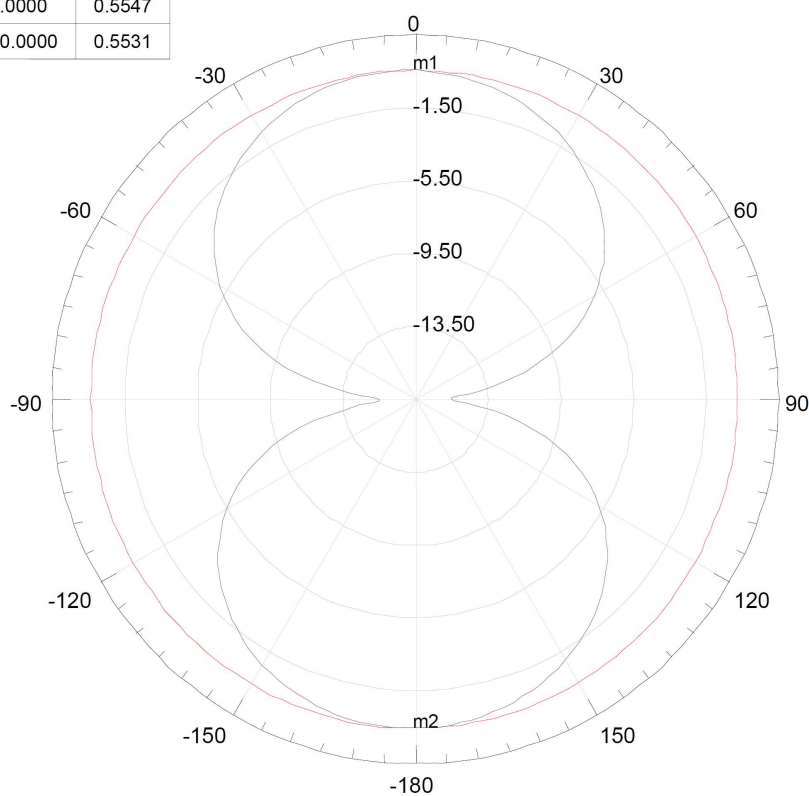


3-2 Normal Module Wiggles S11 performance

Antenna Frequency (MHz):2400-2500MHz
Peak Gain:
2400MHz:-0.9 dBi
2450MHz: 1.5 dBi
2500MHz:-1.3 dBi

Gain result@2450MHz
The gain of this antenna 2D and 3D as blow show and the maximum gain is about 1.5dBi.

Name	Theta	Ang	Mag
m1	0.0000	0.0000	0.5547
m2	180.0000	180.0000	0.5531



Curve Info
dB(GainTotal)
Setup1 : Sweep1
Phi='0deg'
dB(GainTotal)
Setup1 : Sweep1
Phi='90deg'

