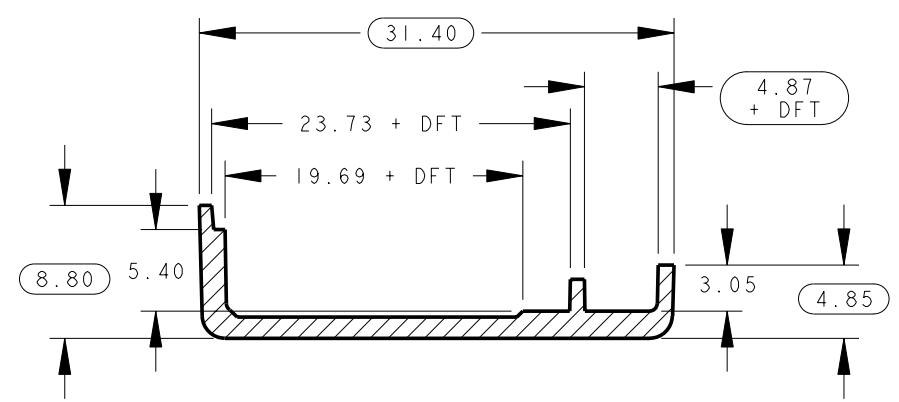
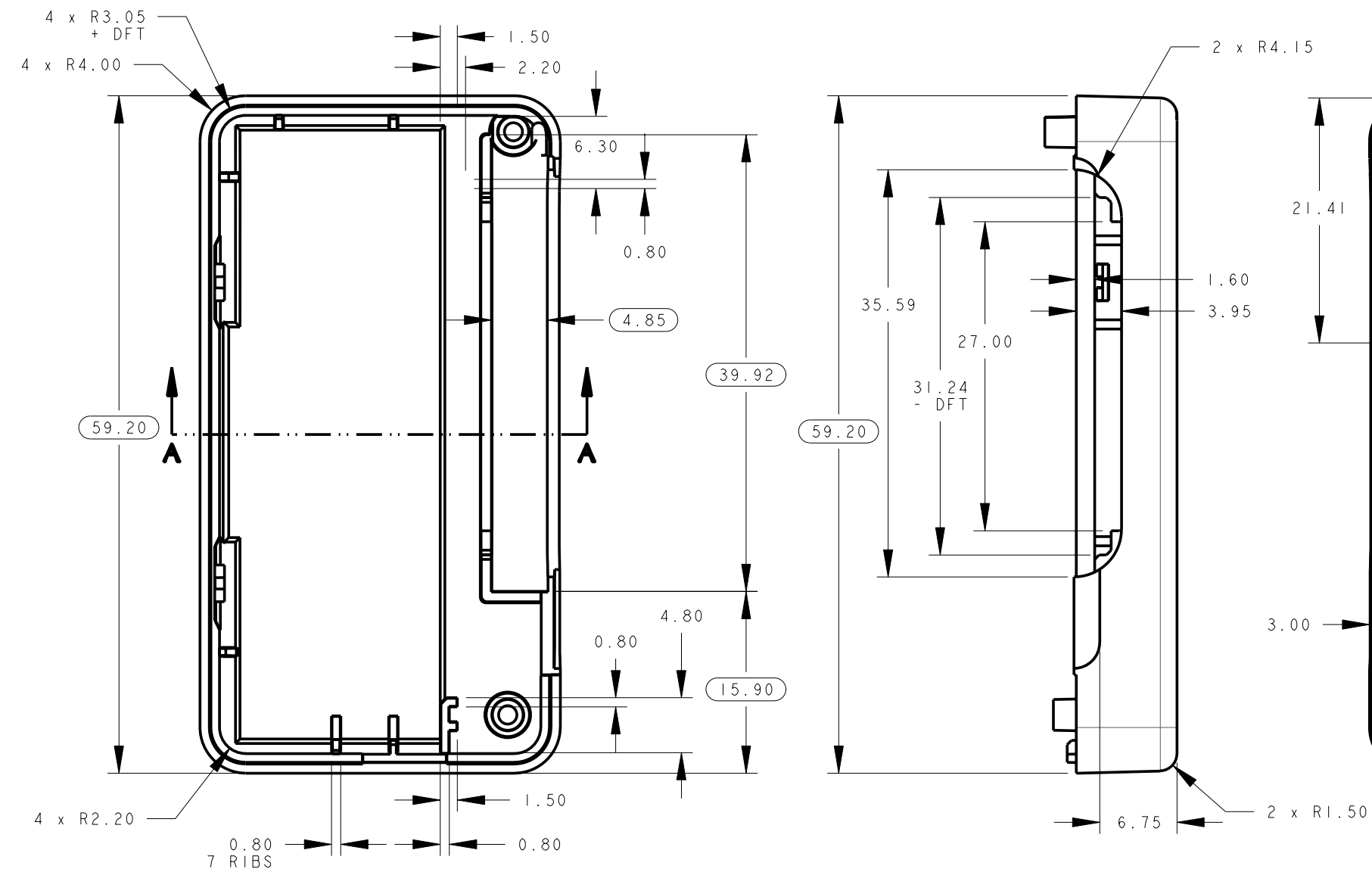

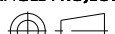



SCALE 1.000

COMPLIANCE INFORMATION



- NOTES
1. MATERIAL = ABS
 2. TEXTURE = HIGH GLOSS
 3. PART IS ORIENTED IN THIS DRAWING TO SHOW PULL DIRECTION.
 4. PART SHALL BE FREE OF ALL FOREIGN MATTER (OIL, DIRT, MOLD RELEASE, ETC.)
 5. PART TO BE FREE OF NICKS, BURRS, AND SCRATCHES.
 6. GATE VESTIGE TO BE +0.1/-0.2
 7. ALL SHARPS TO BE R0.1 MIN.
 8. APROXIMATE PART VOLUME = 4536.564 mm³
 9. ESTIMATED MATERIAL DENSITY = 0.001 g/mm³
 10. ESTIMATED MASS: 4.763 g

ALL UNDIMENSIONED SURFACES SHOULD BE TAKEN DIRECTLY FROM THE PRO/E MODEL.									
DRW: G. ULLOA		MAT'L: SEE NOTES		TITLE hPod Rear Housing					
DATE: 30-Jan-04		TEXTURE: SEE NOTES							
TOLERANCES: .X ± 0.5 .XX ± 0.2 .XXX ± 0.1				1499 SE Tech Center Pl. Suite 350 Vancouver, WA. 98683 PH: (360) 896-2000 Fax: (360) 896-2020					
3rd ANGLE PROJECTION				DWG SZ B		SCALE: 2.000:1		SHEET: 1 OF 1	
				PART NO 490812-0000		REV A1			
		DO NOT SCALE DRAWING							

A0	DRAWING RELEASE	ECO	GAU	23-NOV-04
REV	DESCRIPTION	ECO	BY	DATE
REVISION				



----- Deline-do not print