

Shenzhen Yishengbang Technology Co., Ltd

深圳市亿圣邦科技有限公司

样 品 承 认 书

SPECIFICATION FOR APPROVAL

Model : WIFI:SLK-YLD-4406A-M-115I-B

Shenzhen Yishengbang Technology Co., Ltd

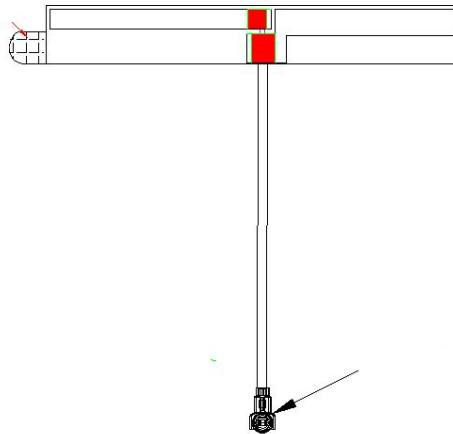
Room 101, Building C, Qianwan Ying technology Park, Gushu, Xixiang, Baoan district, 518000, Guangdong, China

Tel.: 18025305599

Tel.: 18666299104

WIFI

1. Explanation of Product number :



Product Code:

(1) Customer: YLD

(2) Antenna Name: WIFI Antenna

(3) Connector: 1.13 black wire, total length 115mm

2. Features

- *Stable and reliable in performances
- *Compact size
- *RoHS compliance

3. Applications

- * IEEE802.11 (b/g/n)
- * Hand-held devices when WIFI (802.11b/g/n) functions are needed

4. Description

Holy bond's FPC antenna series are specially designed for WIFI (802.11b/g/n) applications. Based on Holy bond's proprietary design and processes, this FPC antenna has excellent stability and sensitivity to consistently provide high signal reception efficiency.

5. Electrical Specifications

5-1

Characteristics	Specifications	Unit
Outline Dimensions	44.6x6.33x0.12	mm
Center Frequency	2.4-2.5	GHz
Bandwidth(under-10dB return loss)	130min	MHz
VSWR	3max	

5-2.

VSWR

S11

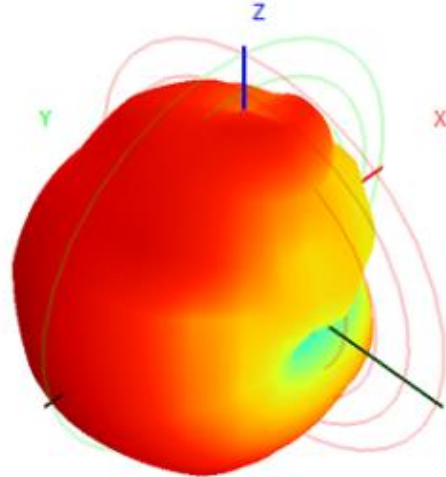
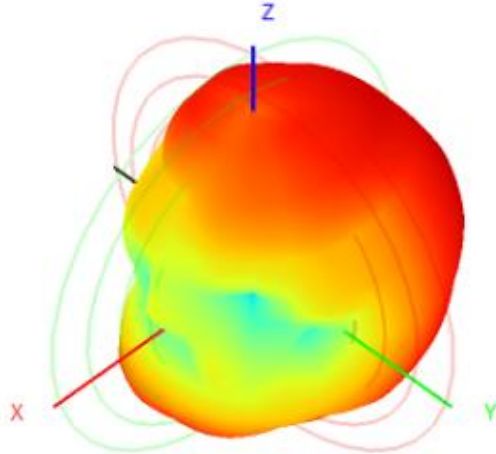


5-3.WIFI +BT Antenna Gain/Efficiency/Radiation Pattern of 3D

Frequency (MHz)	2400.0	2410.0	2420.0	2430.0	2440.0	2450.0	2460.0	2470.0	2480.0	2490.0	2500.0
Efficiency (dBi)	-2.89	-2.80	-2.96	-2.70	-3.00	-3.01	-3.02	-3.10	-2.75	-2.94	-3.09
Gain (dBi)	2.57	2.51	2.12	2.31	2.28	2.13	2.33	2.60	3.10	3.25	2.86
Efficiency (%)	51.36	52.44	50.53	53.69	50.11	49.95	49.86	48.94	53.10	50.80	49.06

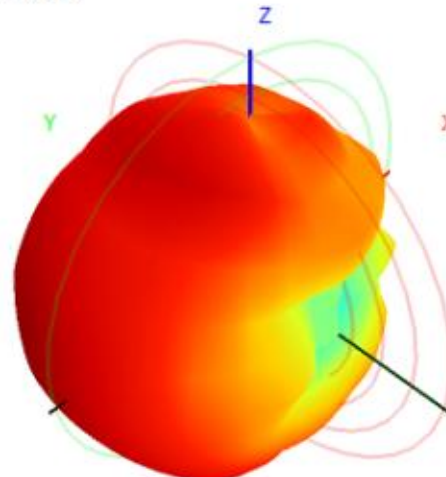
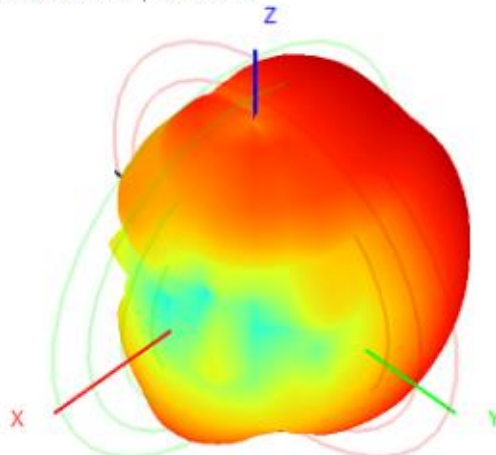
2400.0MHz H+V, Eff: 51.4%

Back View



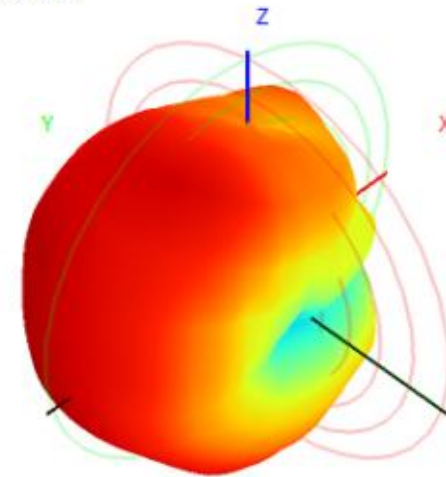
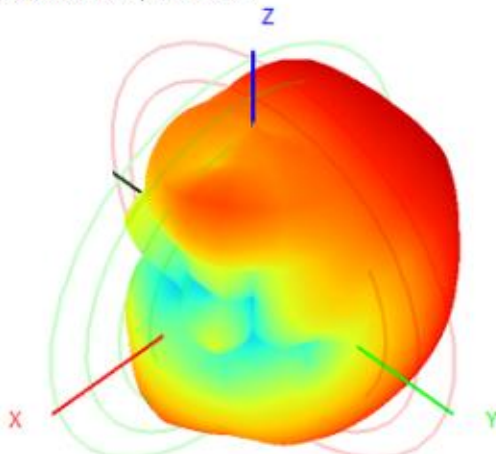
2450.0MHz H+V, Eff: 50.0%

Back View

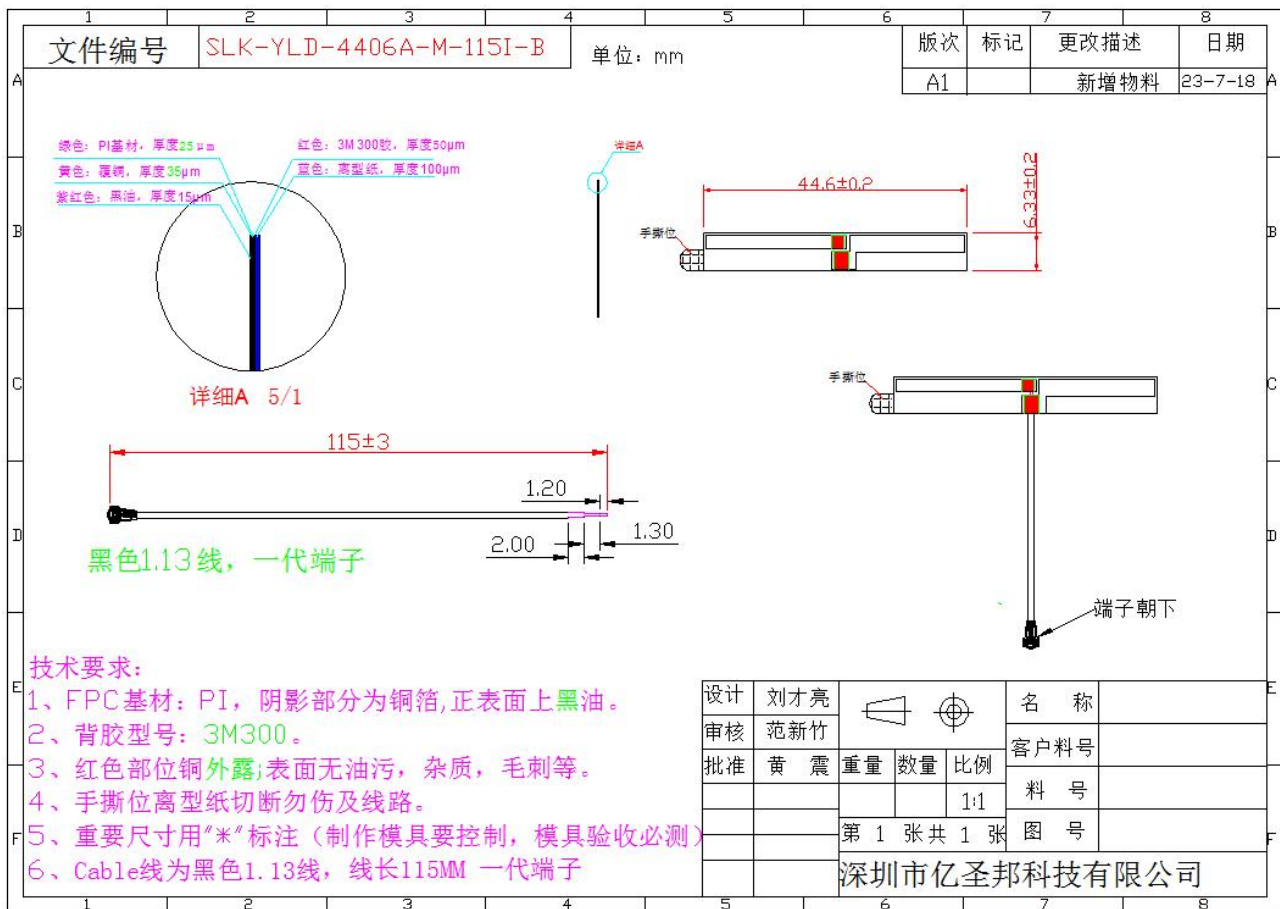


2500.0MHz H+V, Eff: 49.1%

Back View



6. Antenna Dimensions (unit: mm)



7. Antenna Picture

