

BR10 LICENSE FREE BUSINESS RADIO

CTCSS/DCS
Voice Prompt
Transmission Time Limit /Battery Saver

USER'S MANUAL

UNPACKING AND CHECHING EQUIPMENT

Carefully unpack the contents. We recommend that you identify the items listed before discarding the packing material. If any items are missing contact Midland Customer support (see Troubleshooting section)

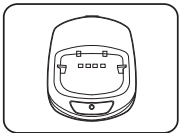
Supplied Equipment



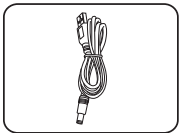
BR10 Radio X2



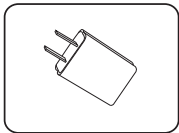
Battery Pack X2



DTC X2



DC X2



AC X2

PREPARATION

Charging The Battery Pack

It is recommended to charge the radios before setup and use. Recharge the radio upon hearing a low-battery indication (three quick beeps) or voice prompt.[Include current table about LED charging indications]

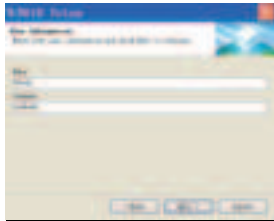
LED	State
Red	Charging
Green	Full

Obtain & install the PC program for setup

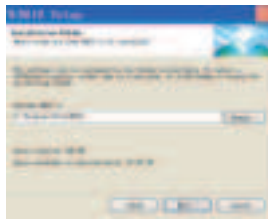
The user needs to obtain the PC program "BR10 setup.exe" through Midland. The installation process is as follows: double-click the PC program "BR10 Setup.exe" to install, then the following window will pop up:



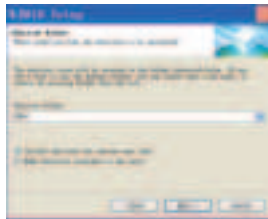
Click "Next" and set the username and company name in the following window:



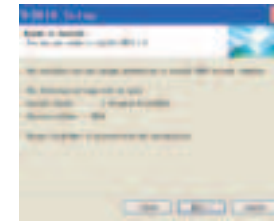
After entering the user name and company name, click "Next" again, and the next window will pop up as shown in the following figure to enter the installation path settings:



After selecting the installation path, click "Next" to enter the next window to set the folder name and user permission setting window,as shown in the following figure:



Set it according to your preference, and then click "Next" to enter the ready installation window, as shown in the following figure:

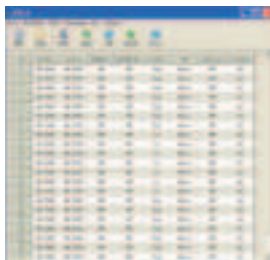


Click "Next" to enter the program installation, and the window as shown below the program installation is successful:



Click "Finish" to complete the installation, you can find the PC program icon on the desktop, and the installation is successful.

If you need to set the parameters of the PC program, you can double click the desktop PC program icon to enter the program interface to set the relevant parameters required, the interface is as follows:

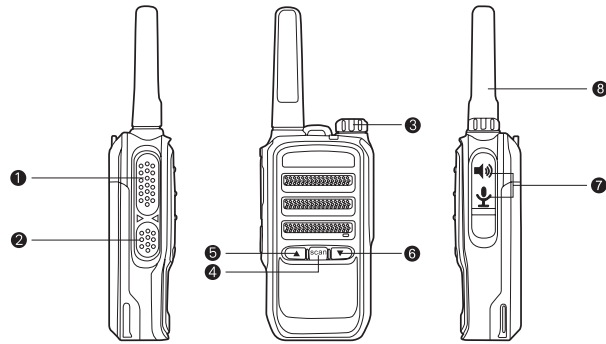


In this interface, the specific parameter settings for each channel are available. If you need some parameter settings of the whole machine, click "Edit" pop-up drop-down menu in the interface, and click "Optional Features" to enter the settings, as shown in the following figure:



For specific settings of each item, refer to the corresponding parameter settings in the manual.

Radio and Controls



1. PTT Key(Push To Talk): Press and hold, then speak into the microphone to transmit. Release to receive.
2. Monitor Function Key
3. Power Switch/Volume Control.
4. Scan Function Key
5. Channel Change (up):(Press to increase the selected channel number)
6. Channel Change(Down):(Press to decrease the selected channel number)
7. Speaker/Microphone Jack: Connect the external speaker/microphone
8. Antenna

BASIC OPERATIONS

Power ON/OFF

Turn the Power Switch/ Volume Control clockwise to switch the radio ON, A beep will sound and a Voice Prompt will announce the current channel number.

Turn the Power Switch/ Volume Control counterclockwise to switch the radio OFF.

Adjusting The Volume

Rotate the Power Switch/ Volume Control to adjust the volume. Clockwise increases the volume and counterclockwise decreases it.

The Volume Control affects both Voice Prompts and voice communications.

Selecting Channel

Press Channel Up or Channel Down to select your desired channel. The Voice Prompt announce the channel selection upon each change.

Transmitting

Press the PTT switch and speak into the microphone in your normal speaking voice.

- For best sound quality at the receiving radio , hold the microphone approximately 1.5 inches (3 ~ 4 cm) from your mouth.

If the battery is too low for transmitting, the LED indicator will blink (Red).

Receiving

1. Select your desired channel .

2. When you hear a caller's voice, readjust the volume as necessary.

Note: • The Squelch Level configuration affects the signal strength required for transmissions to be received.

- Radios will communicate in both directions only when set for the same channel and CTCSS/DCS code.

Configurable Items(Via PC software)

CTCSS/DCS

Squelch Level(0-9)

Battery Saver

Transmit Time-out-timer(15-600 second)

TROUBLE SHOOTING

If you have questions or encounter problems, please refer to the chart below first. If unresolved, please contact Midland support at [email] or +1 (816)-241-8500

Problem	Solution
No power	<ol style="list-style-type: none"> 1. Remove and reinstall the battery to verify proper installation. 2. After attempting to charge the battery with a known-good charger, replace with a known-good battery.
Cannot receive or do not hear transmissions	<ol style="list-style-type: none"> 1. Ensure radio volume is sufficient. 2. Confirm radios have the same channel and CTCSS/DCS settings. 3. Consider if the radios are out of range or there are significant sources of interference in between.
Radios (batteries) will not charge	<ol style="list-style-type: none"> 1. Ensure the charger is plugged in and the AC outlet is working properly. 2. Ensure the charger and radio contacts are clean and not blocked.

TECHNICAL SPECIFICATIONS:

Frequency Range:	462.5500MHz-462.7250MHz (GMRS 462 MHz main channels) 462.5625MHz-462.7125MHz (GMRS 462 MHz interstitial channels) 467.5625MHz-467.7125MHz (GMRS 467 MHz interstitial channels)
Rated voltage	DC 3.7 V
Operation Temperature Range	-20 C to +70C
Memory Channel	22 Channels
Output Power	2W/0.5W
Modulation Mode	FM (F3E)
Ground Method	Negative Pole
Dimension	110x56x36 mm
Weight	About 185g(Including antenna and battery)



WARNING

Our Midland Radio Corporation radio generators RF electromagnetic energy during transmit mode. This radio is designed for and classified as "General population/uncontrolled exposure", meaning it must be used only during the course of employment by individuals aware of the hazards, and the ways to minimize Such hazards.

This radio is NOT intended for use by the "General Population" in an uncontrolled environment. This radio has been tested and complies with the FCC RF exposure limits for "General population/uncontrolled exposure".

In addition, our Midland Radio Corporation radio complies with the following standards and Guidelines with regard to RF energy and electromagnetic energy levels and evaluation of such levels for exposure to humans:

—IEEE Std. 1528:2013 and KDB447498, Evaluating Compliance with FCC Guidelines for Human Exposure to Radio Frequency Electromagnetic Fields.

—American National Standards Institute (C95.1-1992), IEEE Standard for Safety Levels with respect to Human Exposure to Radio Frequency Electromagnetic Fields, 3 kHz to 300 GHz.

—American National Standards Institute (C95.3-1992), IEEE Recommended Practice for the measurement of Potentially Hazardous Electromagnetic Fields-RF and Microwave.



CAUTION

The information listed above provides the user with the information needed to make him or her aware of RF exposure, and what to do to as-sure that this radio operates with the FCC RF exposure limits of this radio.

Electromagnetic Interference/Compatibility

During transmissions, Midland Radio Corporation radio generates RF energy that can possibly cause interference with other devices or systems. To avoid such interference, turn off the radio in areas where signs are posted to do so. DO NOT operate the transmitter in areas that are sensitive to electromagnetic radiation such as hospitals, aircraft, and blasting sites.

General Population/Uncontrolled Use

The radio transmitter is used in situations in which persons are exposed as consequence of their employment provided those persons are fully aware of the potential for exposure and can exercise control over their exposure.

Attention:

This radio complies with IEEE and ICNIRP exposure limits for General population/Uncontrolled RF exposure environment at operating duty factors of up to 50% and is authorized by the FCC for general population/uncontrolled exposure. An appropriate warning label is affixed to all units. In order to comply with RF exposure requirements, a minimum distance of 2.5 cm must be maintained when held-to-face, and body-worn operations are restricted to the approved original accessories (belt clip), a minimum distance of 0 cm. Do not use this device when antenna shows obvious damages.

This product is compliance to FCC RF Exposure requirements and refers to FCC website <https://apps.fcc.gov/oetcf/eas/reports/GenericSearch.cfm> search for FCC ID: MMABR10 to gain further information includes SAR Values.

NOTE:

This equipment has been tested and found to comply with the limits for a Class B digital device, pursuant to part 15 of the FCC Rules. These limits are designed to provide reasonable protection against harmful interference in a residential installation. This equipment generates uses and can radiate radio frequency energy and, if not installed and used in accordance with the instructions, may cause harmful interference to radio communications. However, there is no guarantee that interference will not occur in a particular installation. If this equipment does cause harmful interference to radio or television reception, which can be determined by turning the equipment off and on, the user is encouraged to try to correct the interference by one or more of the following measures:

- Reorient or relocate the receiving antenna.
- Increase the separation between the equipment and receiver.
- Connect the equipment into an outlet on a circuit different from that to which the receiver is connected.
- Consult the dealer or an experienced radio/TV technician for help

Changes or modifications not expressly approved by the party responsible for compliance could void the user's authority to operate the equipment.

This device complies with part 15 of the FCC Rules. Operation is subject to the condition that this device does not cause harmful interference.

This device contains licence-exempt transmitter(s)/receiver(s) that comply with Innovation, Science and Economic Development Canada's licence-exempt RSS(s). Operation is subject to the following two conditions:

- (1) This device may not cause interference.
- (2) This device must accept any interference, including interference that may cause undesired operation of the device.

L'émetteur/récepteur exempt de licence contenu dans le présent appareil est conforme aux CNR d'Innovation, Sciences et Développement économique Canada applicables aux appareils radio exempts de licence. L'exploitation est autorisée aux deux conditions suivantes:

- (1) L'appareil ne doit pas produire de brouillage;
- (2) L'appareil doit accepter tout brouillage radioélectrique subi, même si le brouillage est susceptible d'en compromettre le fonctionnement.

This EUT is compliance with SAR for General population/Uncontrolled exposure limits in IC RSS-102 at operating duty cycle of up to 50% and had been tested in accordance with the measurement methods and procedures specified in IEEE 1528 and IEC 62209. This equipment should be installed and operated with a minimum distance of 2.5 cm must be maintained when held-to-face, and body-worn operations are restricted to the approved original accessories (belt clip), a minimum distance of 0 cm.

Cet EST est conforme au SAR pour la population générale/limites d'exposition non contrôlées dans IC RSS-102 à un cycle de fonctionnement jusqu'à 50 % et a été testé conformément aux méthodes et procédures de mesure spécifiées dans IEEE 1528 et CEI 62209. Cet équipement doit être installé et utilisé avec une distance minimale de 2,5 cm doivent être maintenus lorsqu'ils sont tenus face à face, et les opérations portées sur le corps sont limitées aux accessoires d'origine approuvés (clip de ceinture), une distance minimale de 0 cm.