

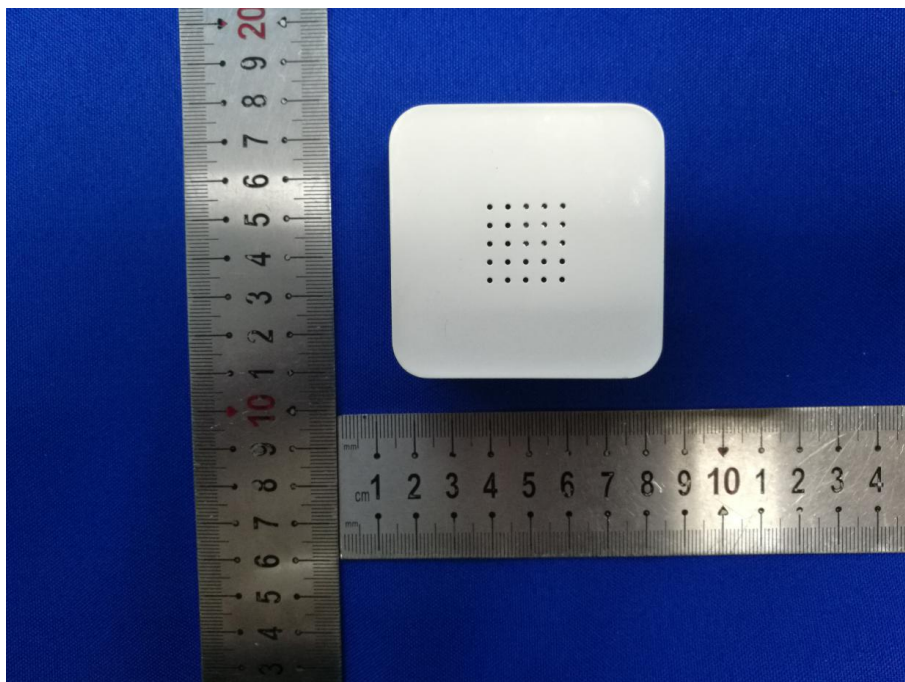
Gravio co2 sensor user manual

1

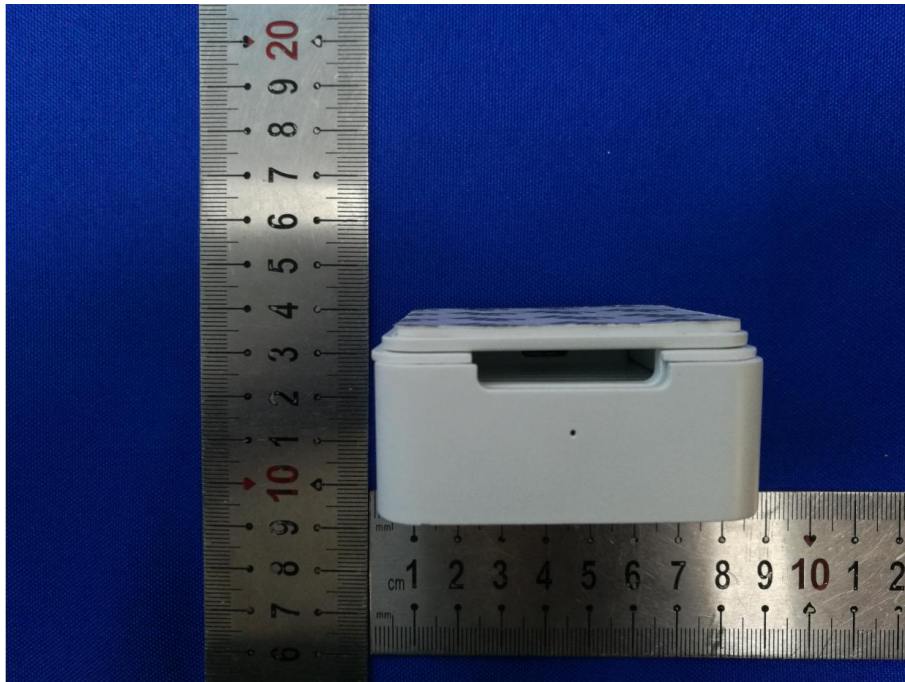
Gravio co2 sensor is a sensor product that can monitor the co2 concentration in ordinary environments. He uses infrared dispersion technology to monitor the co2 data, while using zigbee to transmit the data to the gateway

2

Gravio co2 has a concise design. It only has a led indicator and a button to complete the setting. After setting, he will continue to work for you in silent state without more operations.



Front



led indicator



Button

3

Gravio co2's LED indicator can display 3 states. Click the button on its body. When the LED indicator shows red for 2 seconds, it means that he has not joined any gateway. When it has joined any zigbee gateway After pressing the button, the display will be steady green for 2 seconds. When the power is turned on for the first time or in any state, the button will be pressed for 5 seconds.

Network access steps: (for example we use Gravio Receiver2)

Insert Gravio receiver into pc, mac or linux, open serial debugging tools, such as sscom

Typed hex : 00 00 03 00 00 AA (build a network)

Go on : 00 00 10 00 01 FF AA (Allow devices to connect to the network)

At this time, press and hold the button of Gravio co2 for 5 seconds until the LED indicator flashes green

When gateway receives network access information,

reply: 00 01 11 08 08 C3 22 01 FE FF 9F FD 90 AA

xAt this time, Gravio co2 has been successfully connected to the network, and you need to configure the report collection time

send: 00 00 03 10 17 C3 22 01 FE FF 9F FD 90 02 0D 04 01 00 00 39 0A 00 0A -00 00 00 00 00 AA

reply: 00 01 03 18 0C C3 22 01 FE FF 9F FD 90 02 0D 04 00 AA

Then Gravio co2 will report the data according to the set time

As hex ; 00 05 01 18 13 C3 22 01 FE FF 9F FD 90 02 0D 04 01 00 00 39 00 80 22 44 AA

When Gravio co2 is not normal, you can press and hold the button for 5 seconds to enter the matching network access state

FCC Warning Statement

Changes or modifications not expressly approved by the party responsible for compliance could void the user's authority to operate the equipment. This equipment has been tested and found to comply with the limits for a Class B digital device, pursuant to Part 15 of the FCC Rules. These limits are designed to provide reasonable protection against harmful interference in a residential installation. This equipment generates uses and can radiate radio frequency energy and, if not installed and used in accordance with the instructions, may cause harmful interference to radio communications. However, there is no guarantee that interference will not occur in a particular installation. If this equipment does cause harmful interference to radio or television reception, which can be determined by turning the equipment off and on, the user is encouraged to try to correct the interference by one or more of the following measures:

- Reorient or relocate the receiving antenna.
- Increase the separation between the equipment and receiver.
- Connect the equipment into an outlet on a circuit different from that to which the receiver is connected.
- Consult the dealer or an experienced radio/TV technician for help.