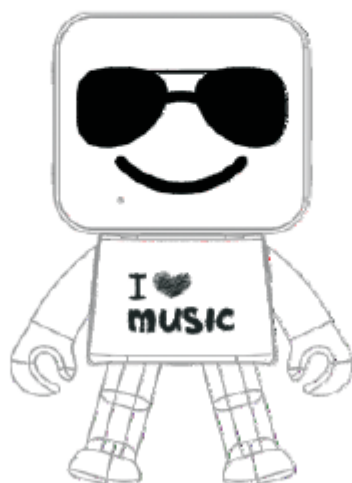
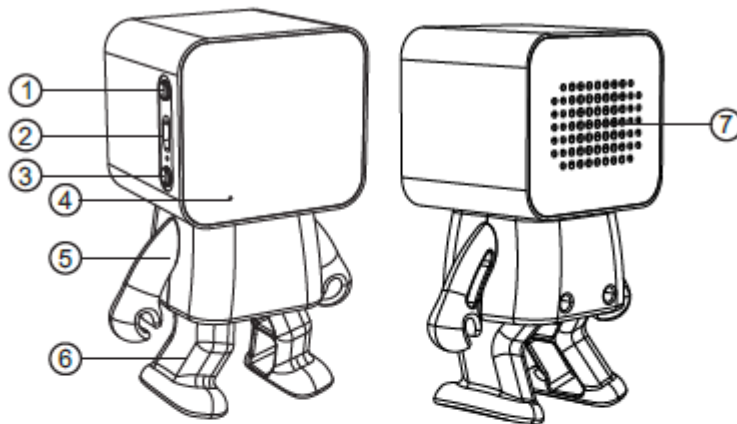


Instruction Manual



Ref.NO.:NSP-228



- 1) The button of ON/OFF and Incoming calling Receiver
- 2) USB Charge Jack
- 3) The Button of Dancer Swing
- 4) Microphone position
- 5) The arm can be in differnt situation
- 6) The foot is workable at the "on" situation of of dancer Swing while the music player is working.
- 7) Sound Rlease hole

◆Product manual

Welcome to buy our patented design Dancer Box Bluetooth speaker, our company reserves the final interpretation of the "manual". This product is subject to change without notice. The user should do the important data backup, The Company shall not be liable for any loss resulting from loss of data. This manual has been carefully checked, but does not rule out the possibility of a small number of text errors. If you find text errors please feel free to contact with our customer service center, Read these operating instructions carefully before use and use the original supplied accessories . In the use of start dancing function process do not be use hand or other means to force the machine to prevent the foot swing, to avoid unexpected damage.

◆Product Features Description

This product is a portable robot-type speaker that uses Bluetooth wireless technology.Can dance with the rhythm of music and do the dance movements.

- Connect wirelessly to your mobile phone and your personal tablet for Bluetooth stereo playback,while supporting mobile phone Bluetooth hands-free function.

- 3.5W Amplifier and enhanced bass [passive diaphragm] make the sound more robust.

- ☆The Bluetooth device to be connected to this system needs to support A2DP (Advanced Voice Delivery Configuration Protocol).

◆ Specifications

- ※ USB charging input voltage: 5V [500MA current].
- ※ Charging time, it takes about 2.5 hours to finished charging.
- ※ Speaker Specifications (ø36MM unit. / 4ohms / 3.W bandwidth; [70HZ- - 20KHZ] sensitivity; 1K (85dB))
- ※ Speaker rated power output 3W.
- ※ lithium battery specifications; 3.7V / 400MA capacity; maximum sound playback time about: 2- 3 hours
- ※ Maximum power distortion 7%
- ※ Signal to noise ratio: 90HZ-20K / 65dB
- ※ Follow the Bluetooth V4.2 + EDR Bluetooth specification
- ※ compatible with A2DP \ AVRCP high-quality stereo audio transmission and remote control protocol
- ※ support hands-free Bluetooth hands-free (HFP protocol)
- ※ Built-in Kalimba DSP (CVC) data processor, complete digital echo, noise, voice processing.
- ※ Bluetooth work in the world-wide 2.4GHz ISM, the use of band (2.402-2.480GHz)
- ※ Wireless effective transmission distance of up to 10 meters

◆ Operating Instructions

※ Bluetooth Connection

1. Press and hold the [>||] button for 2 seconds, release the button after turning on the power, The speaker starts to blink quickly into the blue light pairing state, The pairing step is performed on the Bluetooth device to detect the system. The pairing of this system is named "Dancer Music Box "

2. A list of detected devices appears on the display on the Bluetooth stereo source device. The system displays "Dancer MusicBox" to select this device to perform pairing. During the pairing process, a blinking blue light flashes after the beep sound, indicating that the pairing is successful.

3. The speaker remembers the last connected device and will automatically connect the last successful pairing device each time while the speaker is restarted.

☆: If the connection is not successful, please turn off the speaker and reconnect with the device

※ Play Music

When the speaker is connected to the Bluetooth stereo source device, press the [▷||] button shortly or press the play button of the stereo source device. The system will enter into the music playing state. To pause the playing state, press the [Play] button shortly.

※ Answer incoming calls

There is a call indication sound when the incoming call sound, short press [▷||] button to answer the call.

※ Redial the phone number

When the speaker is switched on, press the [▷||] key shortly twice and the system will automatically re-dial the last phone number.

※ Cancel the telephone dialing

If the speaker is dialing a call, and needs to cancel the dialing.

Press the [▷||] key shortly to cancel the dialing.

※ Hang up the phone

During the call, if you want to hang up the phone call, press the [▷||] button to automatically hang up the current phone call.

※ Turn on/off the dance function

The dancer function will be worable while at the open sitation with the volume over 10DB, if wants to end the dance function and then short press (Dance)Function keys once or it is ok to turn the volume sound in the min to stop the dance function and it will resume the dance function while the volume sound increased over 10DB.

Reminder: There are a slim sound from the motor working situation while the sound volume is in +-10DB.

✕ Turn off the speaker

1. Press the [▷||] button for 2 seconds to enter the turn off state, the blue light goes out after the beep sound and the speaker is automatically turned off.
2. When the power is low, the speaker will automatically enter the turn off state.
3. While the machine is at "on" situation, the product will be into closed automatically if we pull off the charging cable or turn off the power during the product is in charging situation.

✕ Charge

Use the USB cable to connect to the speaker, when charging there is a red light, and while the red light goes out is fully charged .

Note: Please charge the battery in the off state to ensure the battery fully charged.

◆ Solution of the different situation

The speaker in use if you encounter the following conditions

✕ Automatic turn-off

This may be the speaker's power shortage, please re-charge the speaker, when it is fully charged and try turn on again.

✕ Can not be charged

Please try to change the USB charging cable.

✕ System halted or control failure

If the machine system halted or out of control , please charge the machine and then pull off the charging cable can be resume to work.

✕ Can not be paired or connected

In your list of Bluetooth devices to delete the local system device name, then the speaker operation in to the pairing mode, try again on the speaker pairing.

◆ **Caution: This product isn't a toy and isn't suitable for the Children under 3 years old.**

- Don't expose this product to water or fire, diluent or other Chemicals, medicine, and please retain this instructions.
- Don't stop the function of Dancer Swing by hand or other strong way to avoid unexpected damaged on the product.
- Don't impact the unit speaker
- Don't use the unit close to magnetic field and electricity situation.
- Don't use the unit in direct light or Heating apparatus
- Don't Self disassembly, repair, modification.
- Don't use the unit while driving in car, by bike or motorcar.
- Don't have the discarded packaging, batteries, used electronic products in together, please classify.

Federal Communications Commission (FCC) Statement

This device complies with part 15 of the FCC Rules. Operation is subject to the following two conditions: (1) This device may not cause harmful interference, and (2) this device must accept any interference received, including interference that may cause undesired operation.

Note: This equipment has been tested and found to comply with the limits for a Class B digital device, pursuant to part 15 of the FCC Rules. These limits are designed to provide reasonable protection against harmful interference in a residential installation. This equipment generates, uses and can radiate radio frequency energy and, if not installed and used in accordance with the instructions, may cause harmful interference to radio communications. However, there is no guarantee that interference will not occur in a particular installation. If this equipment does cause harmful interference to radio or television reception, which can be determined by turning the equipment off and on, the user is encouraged to try to correct the interference by one or more of the following measures:

- Reorient or relocate the receiving antenna.
- Increase the separation between the equipment and receiver.
- Connect the equipment into an outlet on a circuit different from that to which the receiver is connected.
- Consult the dealer or an experienced radio/TV technician for help.

Warning: Changes or modifications made to this device not expressly approved by JASKEY LIMITED may void the FCC authorization to operate this device.

Note: The manufacturer is not responsible for any radio or TV interference caused by unauthorized modifications to this equipment. Such modifications could void the user's authority to operate the equipment.