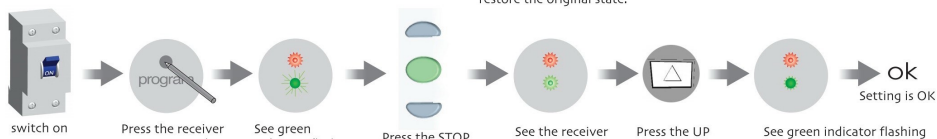
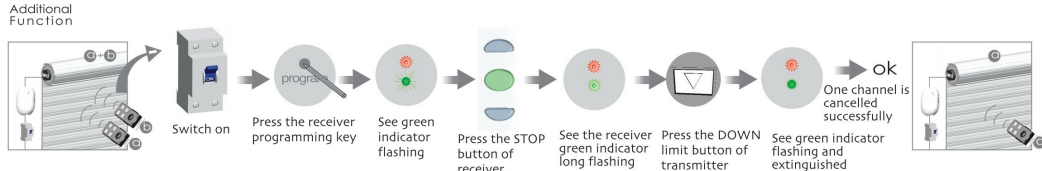




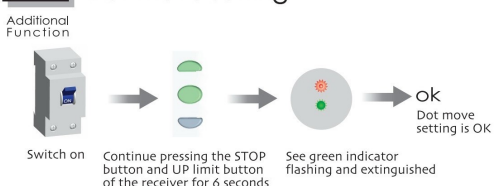
Set up and add emitter



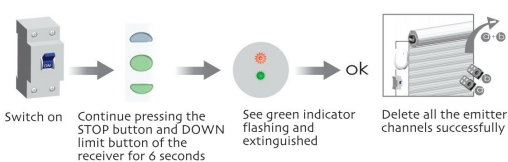
Cancel one channel of emitter



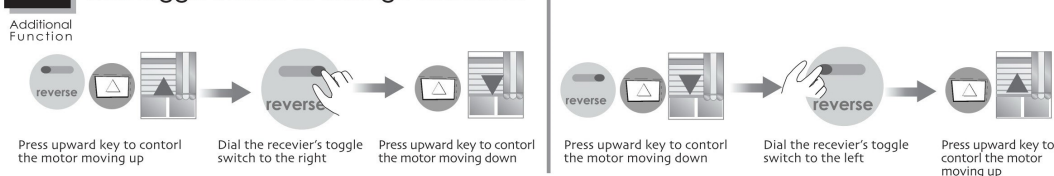
Dot-move setting



Delete all the emitter channels



Dial toggle switch to change directions



Up limit setting



Down limit setting



All controls support 433MHz & 868MHz
All controls support 230V/50Hz & 120V/60Hz

Control System

DC155/DC136(A)/DC115A Control System

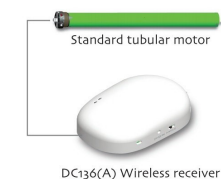
Specification

Version No: A/00



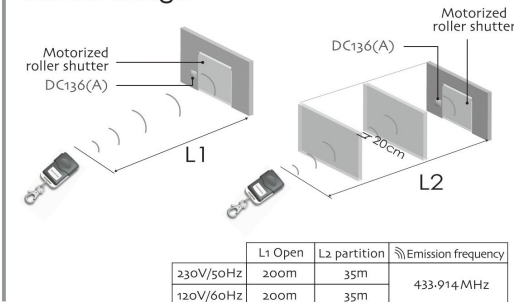
Receiver specification

! Group control channel match code, delete code, convert direction all unworkable. When receiver in the mode of dot function, press up key or down key within two seconds, emitter control the motor working in dot function. If continuous press more than 2 seconds motor will last working.



- ✗ Wireless receiver
- ✗ Electronic
- ✗ Light-touch
- ✗ Dot-move
- ✗ Dial toggle switch to change directions
- ✗ Standard type DC136(A) can store 20(50) effective channels, over 20(50) channels, if still add new channel, only last channel will be repeating

Control Range

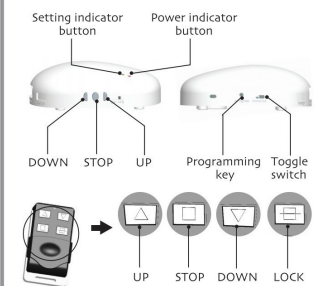


Matchable emitter

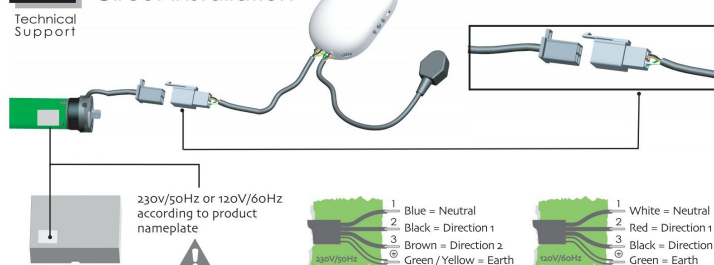
! 5-channel emitter = Single-channel emitter × 5
one channel of emitter can control 20 receivers at most



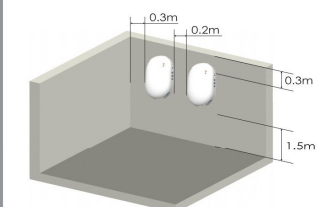
Button specification



Circuit installation



The best installation distance



- 1 The shortest distance between receiver and ground > 1.5m
- 2 The shortest distance between receiver and roof > 0.3m
- 3 The shortest distance between receiver and receiver > 0.2m

FCC STATEMENT

1. This device complies with Part 15 of the FCC Rules. Operation is subject to the following two conditions:

(1) This device may not cause harmful interference.

(2) This device must accept any interference received, including interference that may cause undesired operation.

2. Changes or modifications not expressly approved by the party responsible for compliance could void the user's authority to operate the equipment.

NOTE: This equipment has been tested and found to comply with the limits for a Class B digital device, pursuant to Part 15 of the FCC Rules. These limits are designed to provide reasonable protection against harmful interference in a residential installation.

This equipment generates uses and can radiate radio frequency energy and, if not installed and used in accordance with the instructions, may cause harmful interference to radio communications.

However, there is no guarantee that interference will not occur in a particular installation. If this equipment does cause harmful interference to radio or television reception, which can be determined by turning the equipment off and on, the user is encouraged to try to correct the interference by one or more of the following measures:

- Reorient or relocate the receiving antenna.

- Increase the separation between the equipment and receiver.

- Connect the equipment into an outlet on a circuit different from that to which the receiver is connected.

- Consult the dealer or an experienced radio/TV technician for help.