

DESIGNATED CHARACTERISTICS			KPC		
4	LAST NUMBER USED	FIT/FUNCTION	◇ FF		
4	TOTAL ON DRAWING				
KPC NO	DESCRIPTION	RATIONALE	ZONE	SHT	PTS
1	MODULE TO CUSTOMER CONSOLE	CUSTOMER INTERFACE CHARACTERISITIC	E-6	1	1
2	MODULE TO CUSTOMER CONSOLE	CUSTOMER INTERFACE CHARACTERISITIC	E-4	1	1
3	LABEL INFORMATION	CUSTOMER REQUIREMENTS	A-7	1	1
4	LABEL INFORMATION	CUSTOMER REQUIREMENTS	B-7	1	1

ITEM NO.	SUPPLIER PART NUMBER	DELPHI PART NUMBER	VOLVO P/N	PART NAME	MATERIAL	FINISH HEAT/TREATMENT	QTY.
1	>	35052528	PIA	WIRELESS CHARGER SUB-ASM-VOLVO	N/A	N/A	1
2	00-046-005096	33323636	PIA	BRACKET-VOLVO	STEEL	ZINC	1
3	00-002-005069	33323637	PIA	LABEL	STEEL	A2K DIN EN ISO 4042	4
4	00-004-005244	33259022	PIA	LABEL-MFG INFORMATION	POLYESTER	N/A	1
5	00-046-005095	33323639	PIA	MOUNTING CLIP-VOLVO	STEEL	PHOSPHATE/OILED	1
6	00-004-005432	33323638	PIA	LABEL-VOLVO WIRELESS CHARGER	POLYESTER	N/A	1
7	>	35114400	N/A	TEST PLAN VOLVO-V316	N/A	N/A	N/A

REVISION HISTORY					
REV.	ZONE	DESCRIPTION	AUTHORITY	DATE	DRAWN BY
A		RELEASED FOR PRODUCTION	002008	17.JUL2017	B.CHAPMAN

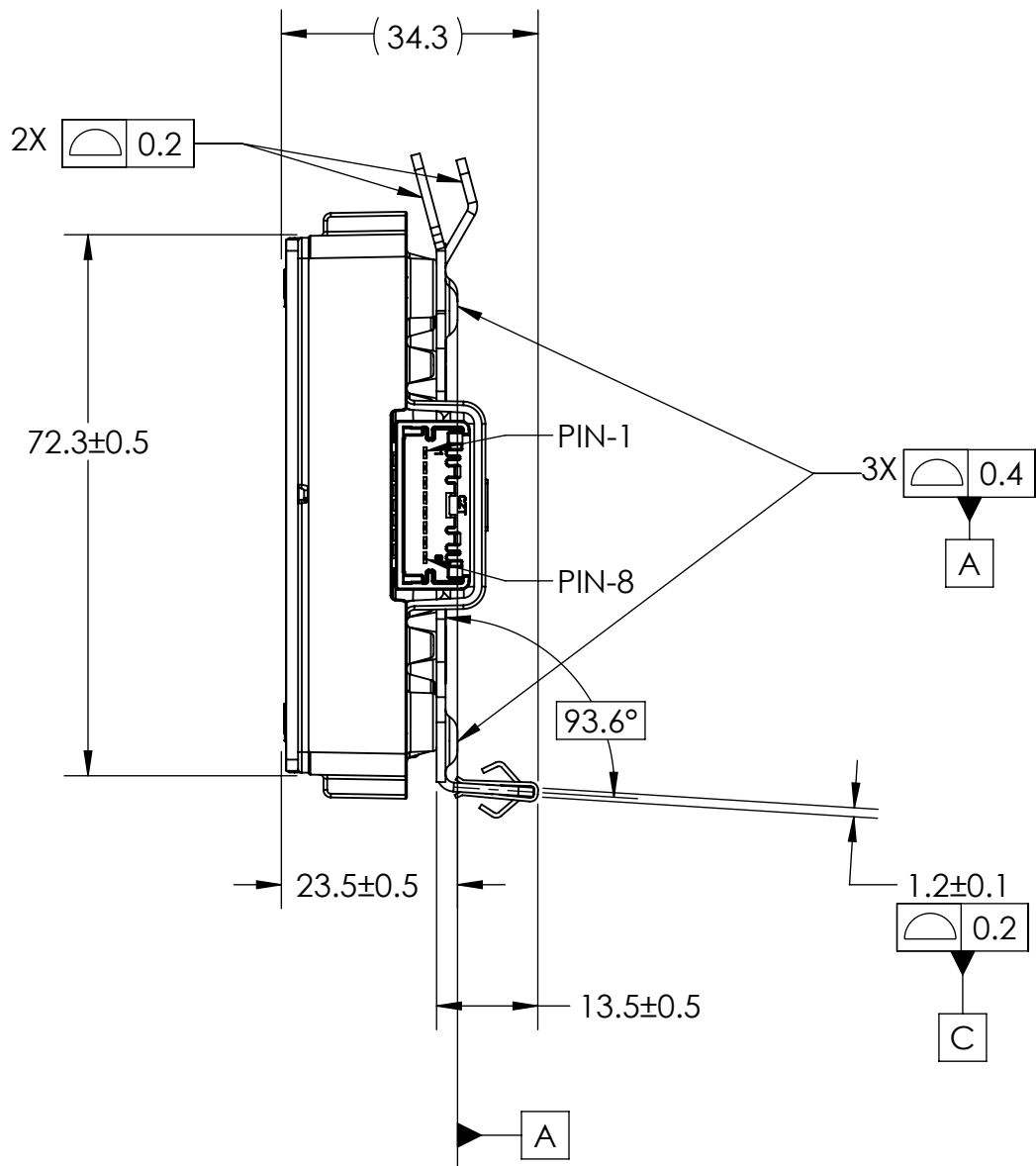
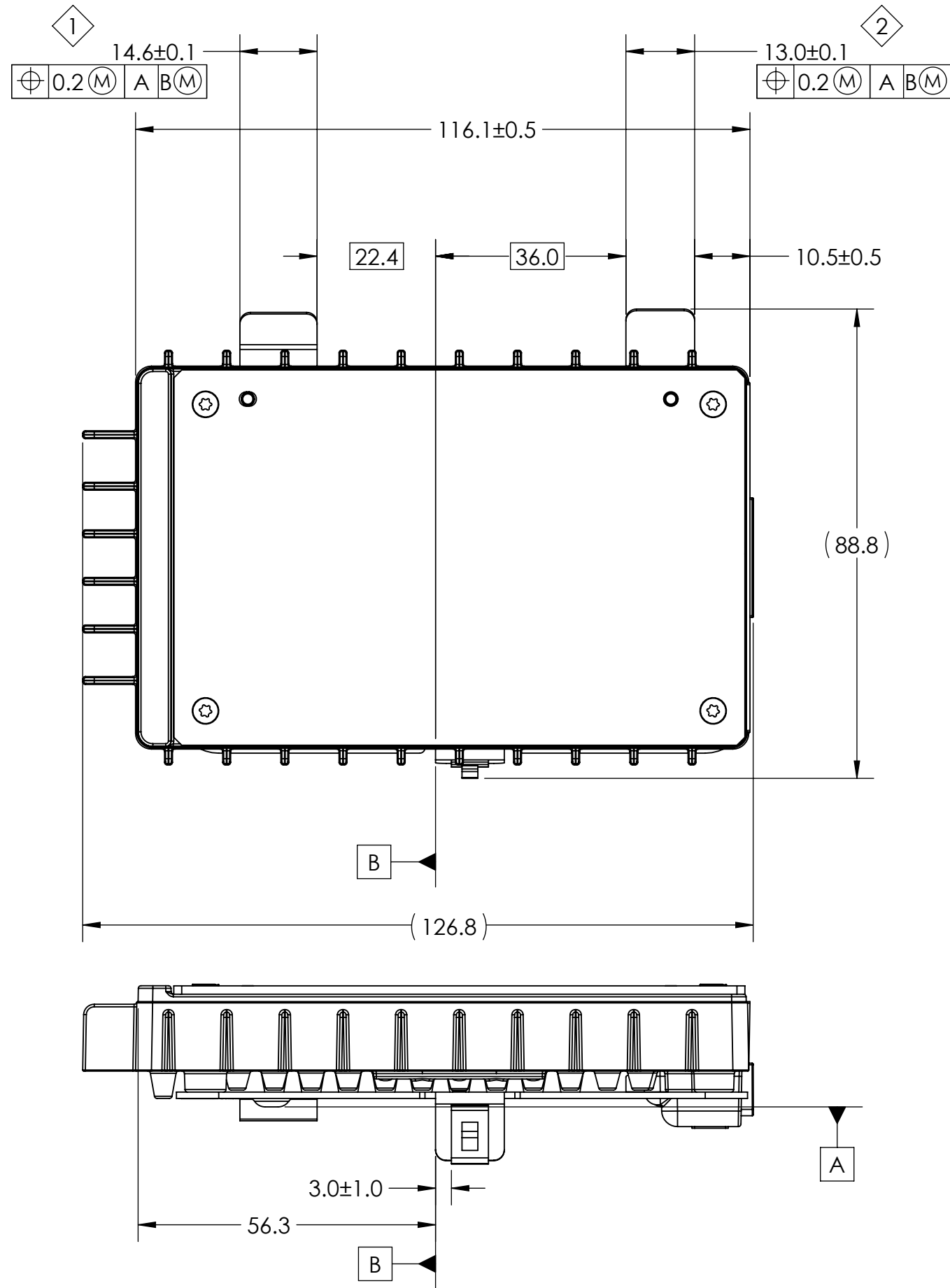
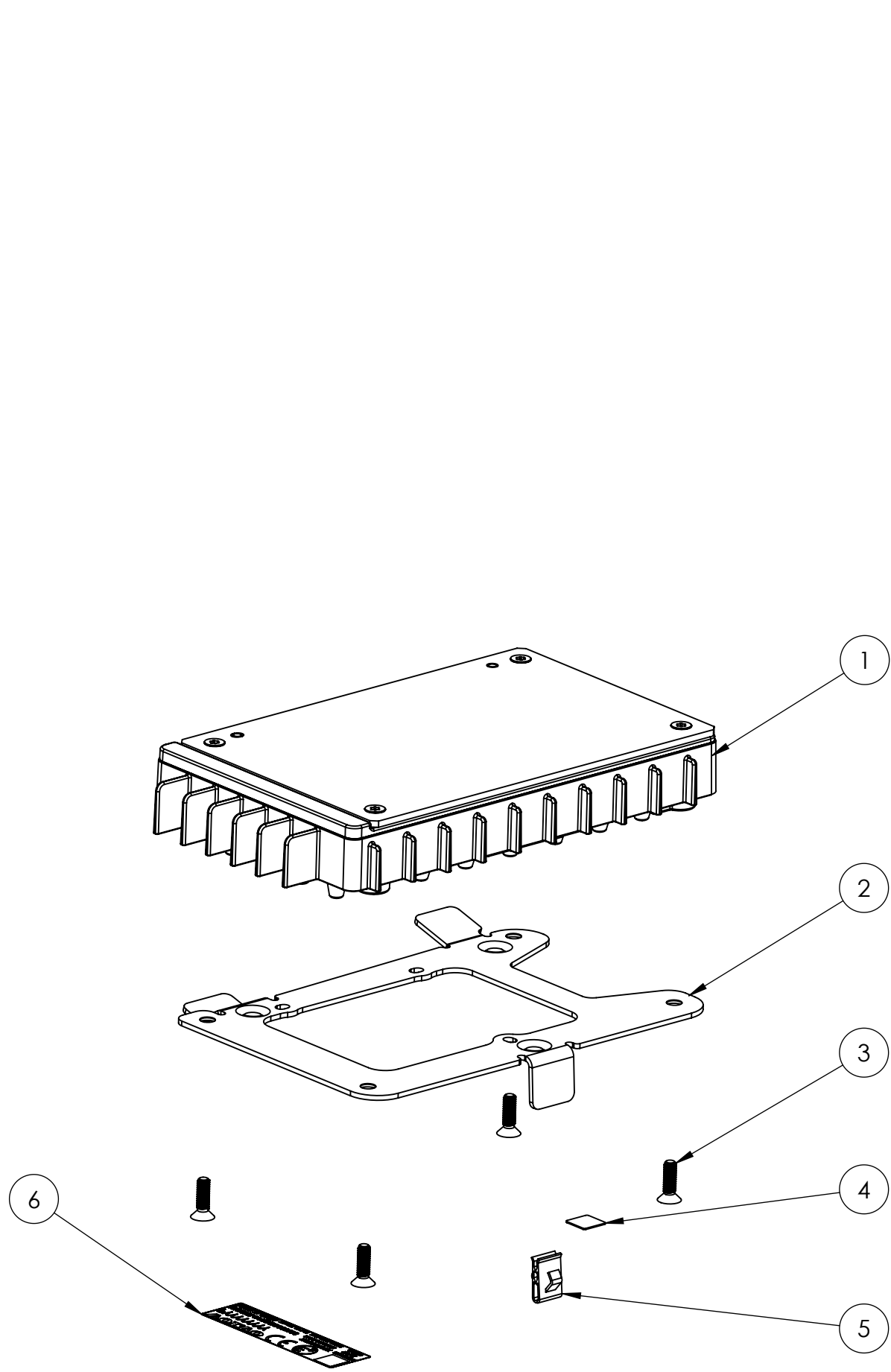
E

D

C

B

A



CONNECTOR PINOUT	
PIN	FUNCTION
1	BAT+
2	SPARE
3	SPARE
4	SPARE
5	BAT-
6	LIN
7	SPARE
8	SPARE

NOTES:

UNLESS OTHERWISE SPECIFIED:

MAXIMUM ALLOWABLE ASSEMBLY PCB STRAIN SHALL BE 400 µε.

CLIP NOT ALLOWED TO COME LOOSE DURING TRANSPORTATION AND DURING REMOVAL FROM CONSOLE.

THREE DIMENSIONAL CAD IS MASTER.

DIMENSIONS NOT SHOWN IN THE DRAWING SHALL BE EXTRACTED FROM 3D CAD.

OTHER THAN UNITED STATES MANUFACTURED COMPONENTS THE COUNTRY OF ORIGIN MUST BE MARKED IN ENGLISH.

ENGINEERING APPROVAL OF PRODUCTION SAMPLES FOR EACH SUPPLIER REQUIRED PRIOR TO AUTHORIZATION OF INITIAL PRODUCTION.

CHANGES TO DESIGN, COMPOSITION OR PROCESSING OF THE PART PREVIOUSLY APPROVED FOR PRODUCTION REQUIRE PRIOR APPROVAL FROM VOLVO ENGINEERING.

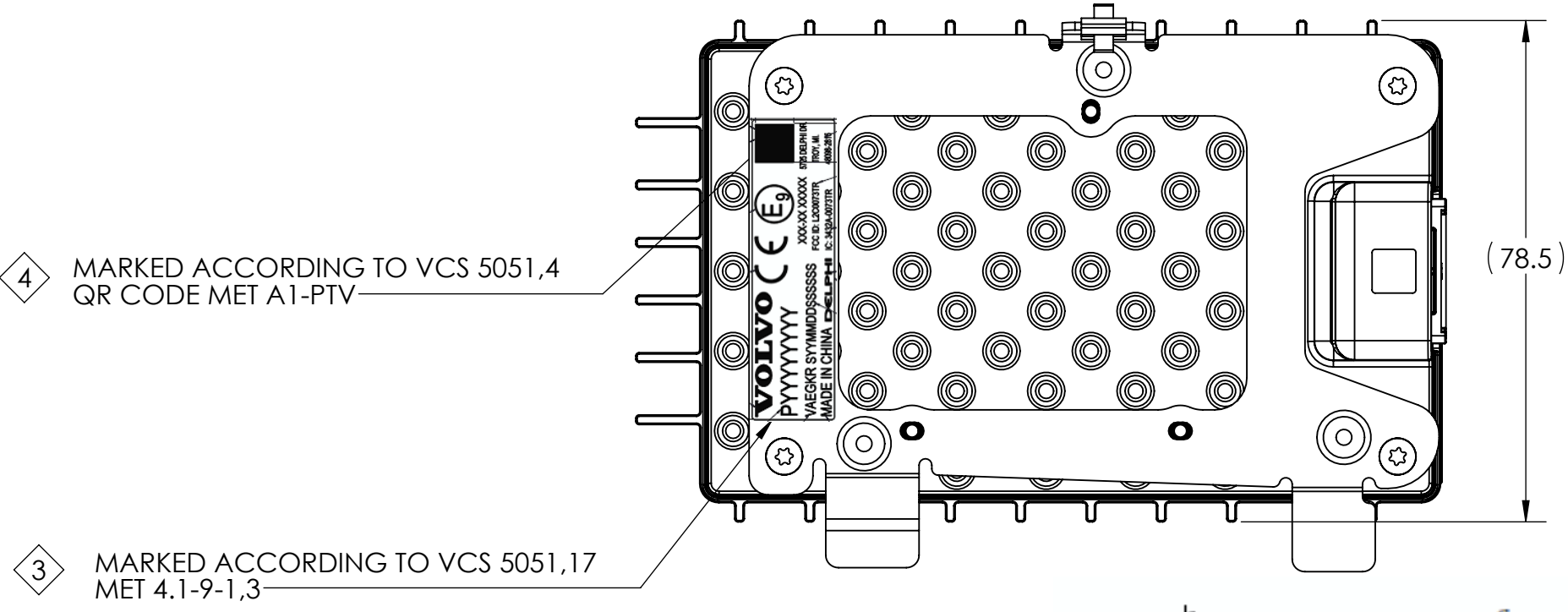
DESIGN CENTER APPROVAL OF APPERANCE FEATURES REQUIRED PRIOR TO SUBMISSION OF PRODUCTION SAMPLES.

PART MUST BE FREE OF BURRS, FLASH AND SHARP EDGES THAT MAY AFFECT THE FUNCTION, SAFE HANDLING, INSTALLATION OR REMOVAL OF THE PART.

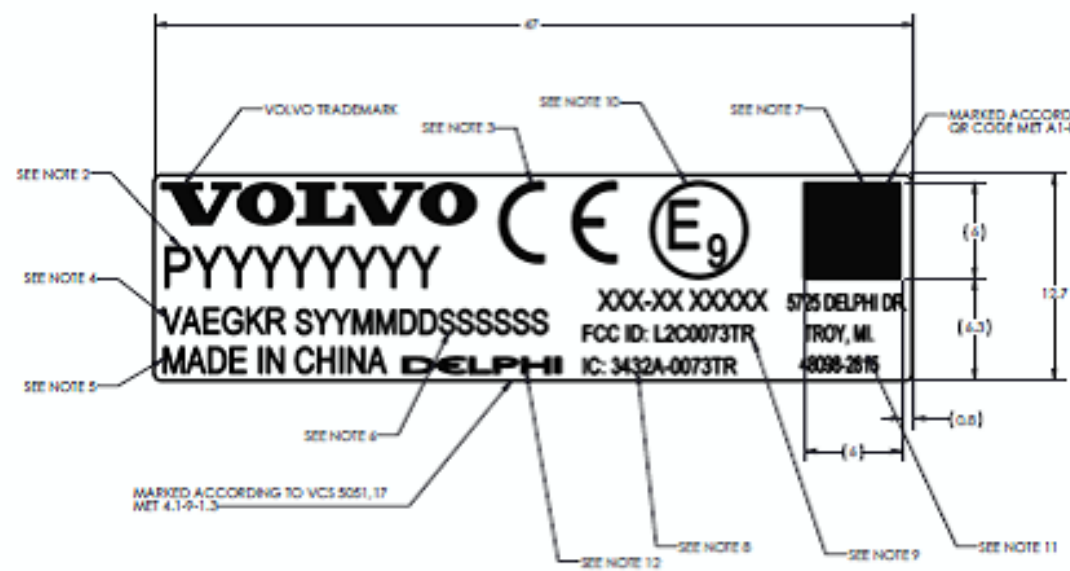
FOR THE PURPOSES OF THE GEOMETRIC TOLERANCING, ALL DIMENSIONAL INFORMATION CONTAINED IN THE CAD MODEL IS BASIC (THEORETICAL).

SCREW TORQUE FOR BRACKET PAN HEAD SCREWS 0.9 +/-0.3 N\*m

WEIGHT OF MODULE: 269g



VOLVO EOL PROGRAMMING		
ITEM	DELPHI DESCRIPTION	HUMAN READABLE LABEL CONTENT
1	DELPHI FINAL ASSEMBLY PART NUMBER	35111281
2	CUSTOMER PART FINAL ASSEMBLY PART NUMBER	31450884
3	SUPPLIER CODE	AEGKR
4	SERIAL NUMBER	
5	COUNTRY OF MANUFACTURE	MADE IN CHINA



<b>DELPHI</b> DELPHI CORPORATION COPYRIGHT 200X DELPHI CORPORATION AND/OR ITS AFFILIATES. ALL RIGHTS RESERVED. THIS DRAWING IS THE PROPERTY OF DELPHI CORPORATION AND CONTAINS DELPHI CONFIDENTIAL INFORMATION. THE REPRODUCTION, DISTRIBUTION AND UTILIZATION OF THIS DOCUMENT OR ITS RELATED CAD MATH DATA, AS WELL AS COMMUNICATION OF ANY CONTENT TO OTHERS, WITHOUT EXPRESS AUTHORIZATION, IS PROHIBITED.	UNLESS OTHERWISE SPECIFIED: DIMENSIONS ARE IN MILLIMETERS TOLERANCES: 0 - 6 = +0.1 6 - 30 = +0.2 30 - 120 = ±0.3 120 - 400 = +0.5 ANGULAR ±0.5 DEGREES INTERPRET GEOMETRIC TOLERANCING PER ASME Y14.5M-1994		NAME	DATE
	FINISH	SEE NOTE	DRAWN BY	B.CHAPMAN
	DO NOT SCALE DRAWING	USE CAD DATA	CHECKED BY	J.MECCA
			ENG APPR.	N/A
			MFG APPR.	N/A
			Q.A.	N/A
			THIRD ANGLE PROJECTION	
			3D CAD AVAILABLE	

CUSTOMER PART NUMBER		31450884
TITLE:		WPC- VOLVO WIRELESS CHARGER FINAL ASSEMBLY
SIZE	DWG. NO.	REV
D	35111281	A
SCALE: 1:1	WEIGHT: 269g	SHEET 1 OF 1