

Photo documentation

Photo 1: Measurement System OPENSAR



Photo 2: Front view



Photo 3: Rear View

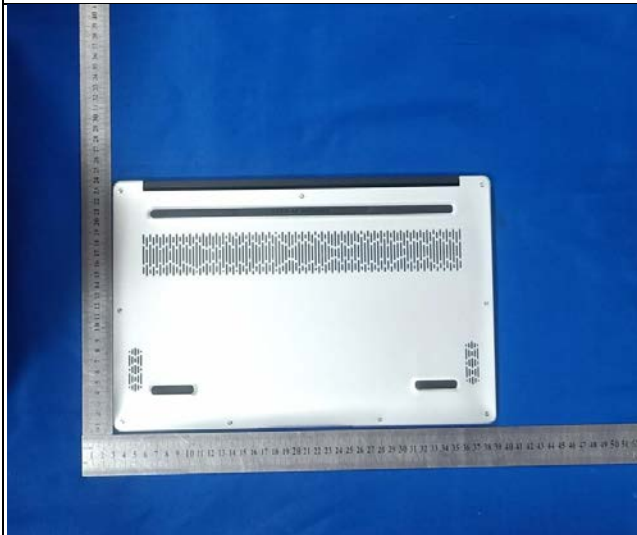


Photo 4: Front Side 0mm



Photo 5: Rear Side 0mm

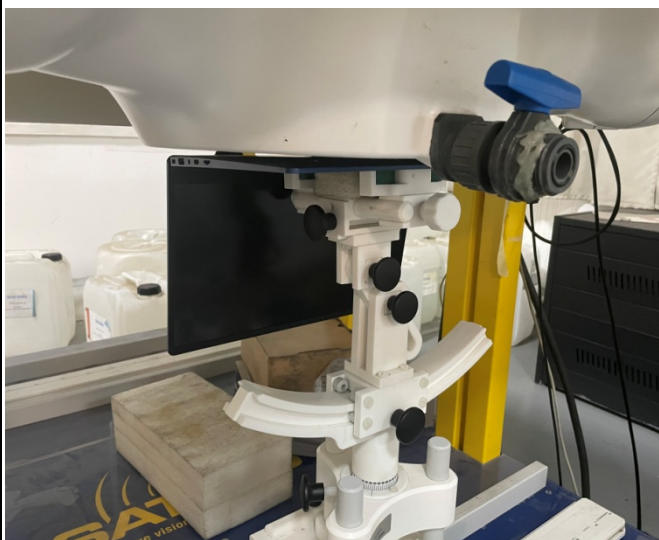


Photo 6: Left Side 0mm

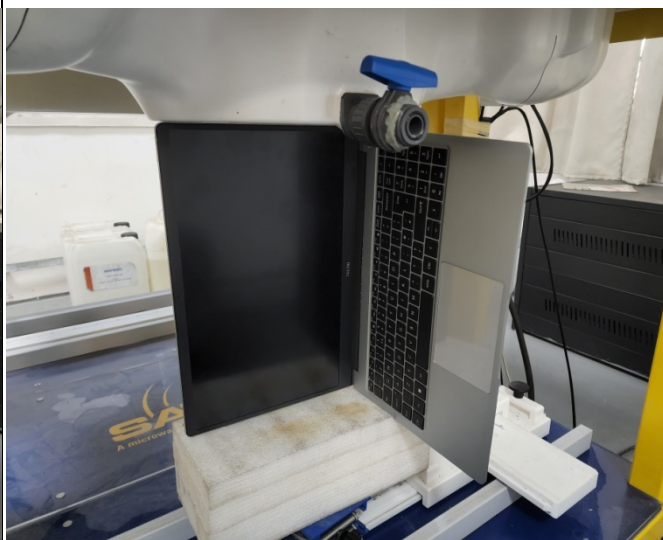


Photo 7: Top Side 0mm



Photo 8: 2450MHz Liquid Depth $\geq 15.0\text{cm}$

