

Document ID	https://docs.google.com/document/d/1inZpYIEIN2W3wTZhgn5o78E0tn3oortm/
Responsible	Oystein Moldsvor
Classification	Confidential

Revision History Table		
Named revision	Date	Comment:
01	2024-01-05	First version

Internal Photos

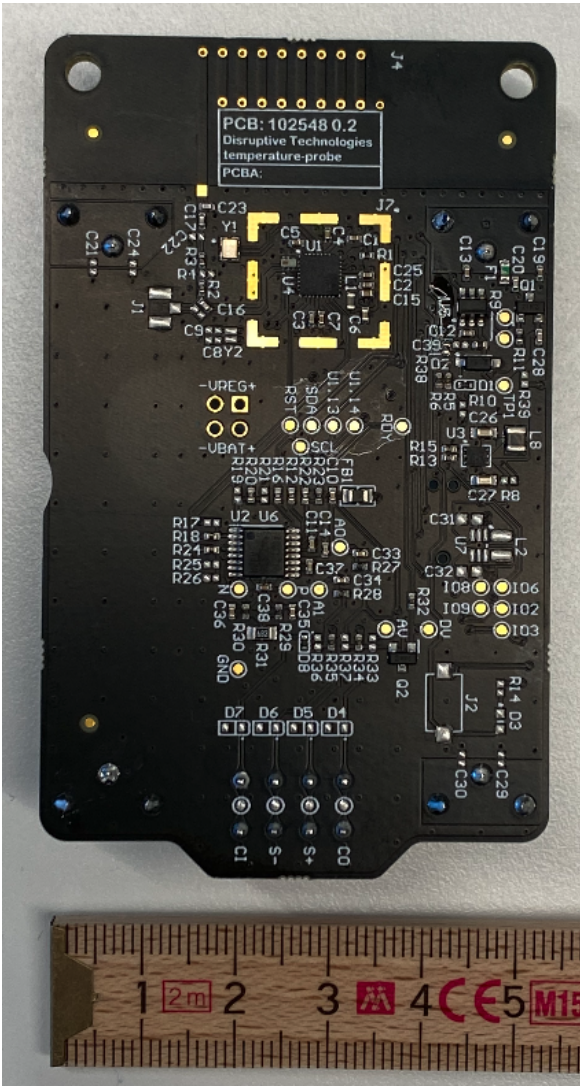


Figure 1: Picture of the component side of the assembled PCB inside 102774 - Temperature Probe Sensor US.

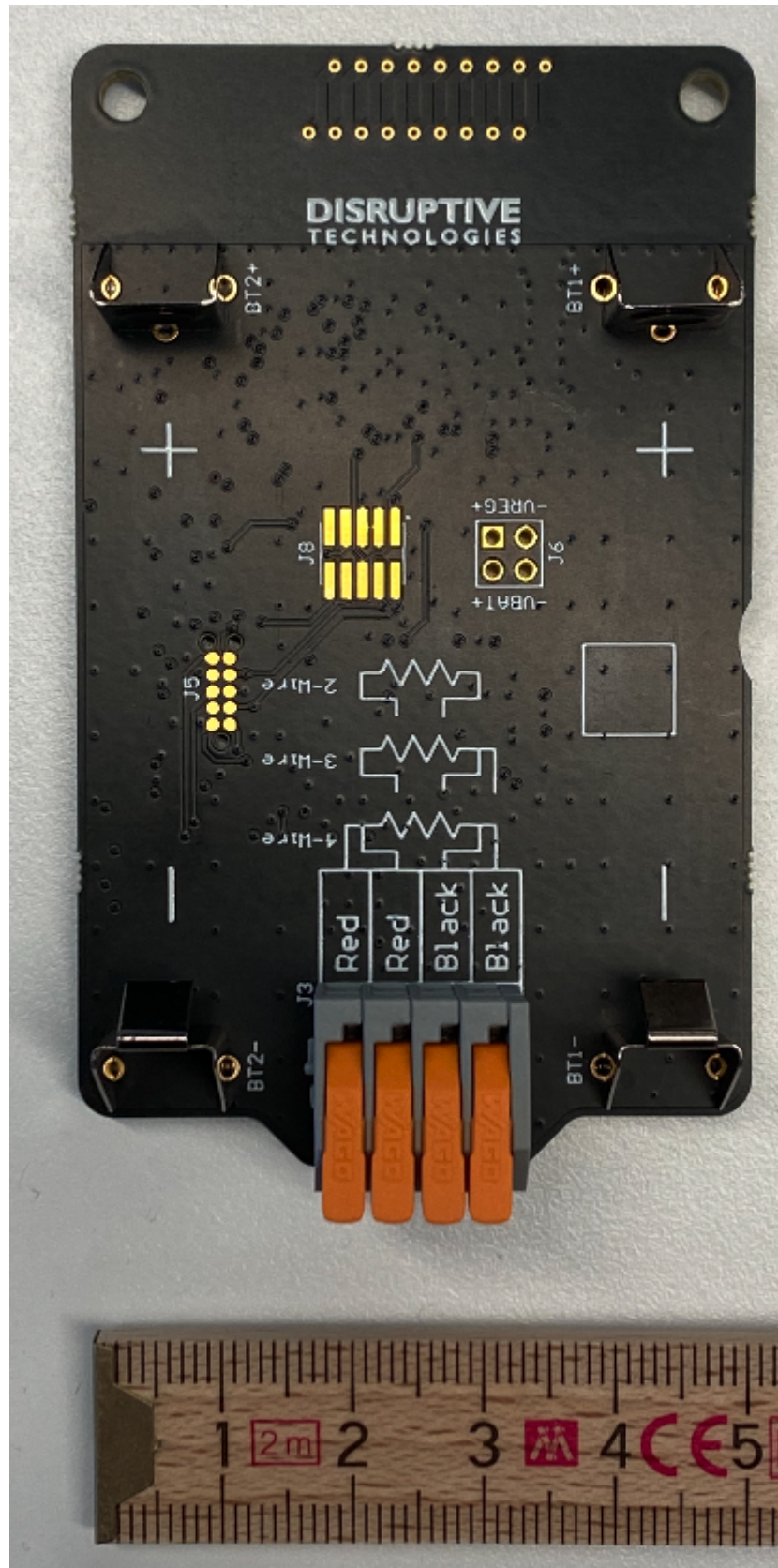


Figure 2: Picture of the back side of the PCB inside 102774 - Temperature Probe Sensor US.

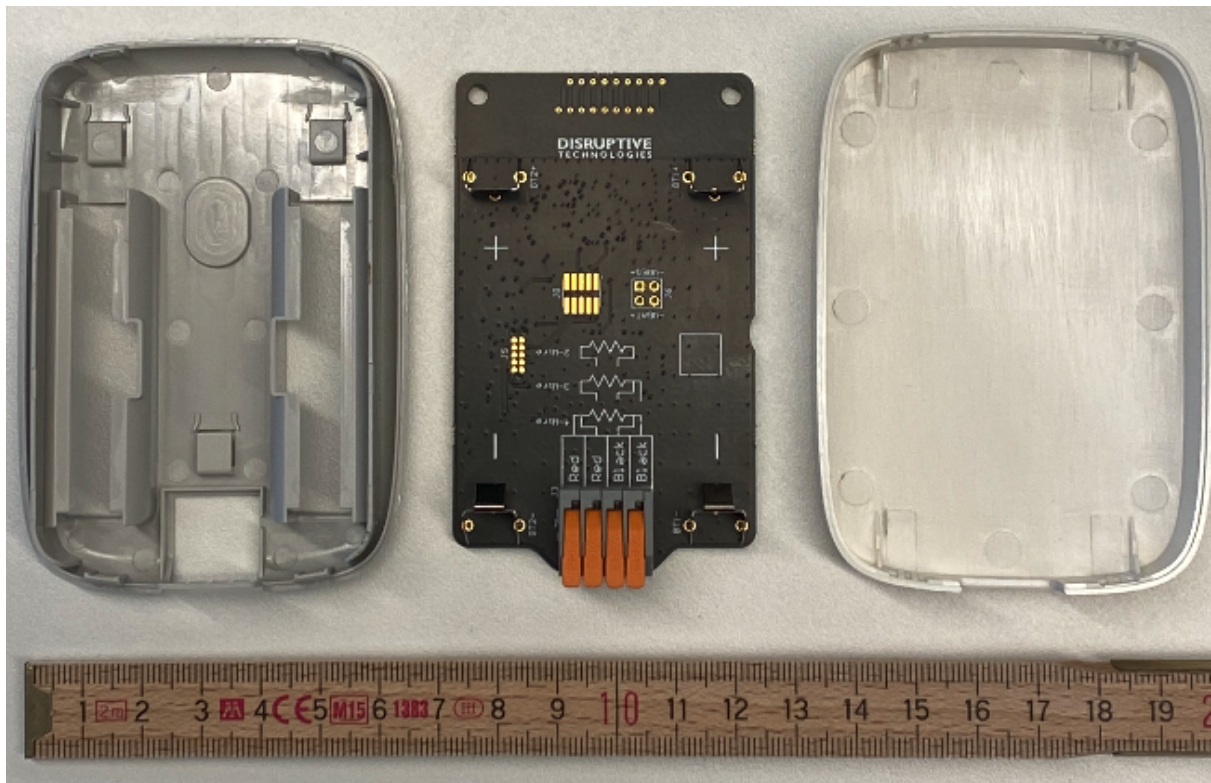


Figure 3: The inside of the plastic enclosure. The PCB shall be placed into the left part and the front (right) side shall be snapped on top of the PCB.