

**EXHIBIT 11**

**Photographs of The Equipment Test Set up**

Per Section 2.1033 (c)(21)

Contain at least one drawing or photograph showing the test set-up for each of the required types of tests applicable to the device for which certification is requested. These drawings or photographs must show enough detail to confirm other information contained in the test report. Any photographs used must be focused originals without glare or dark spots and must clearly show the test configuration used.

Per ANSI C63.26 Section 8. n) 11)

Photographs of the test set-up where this is relevant for the repeatability of the test results.

Response

The required photographs of the test set-ups are attached. Short Term Confidentiality, per KDB 726920 D01 Confidentiality Request Procedures, is requested for these photos.

## 1.1 Test Equipment and Test Set-up Photographs

The Test Setup photographs are attached below.

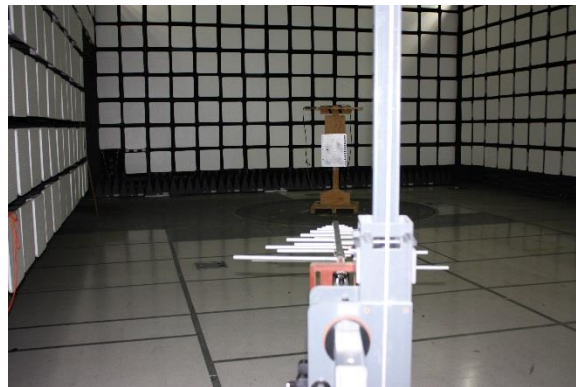
## 1.2 Radiated Emissions Photographs

The Radiated Emissions Test Setup photographs are below.

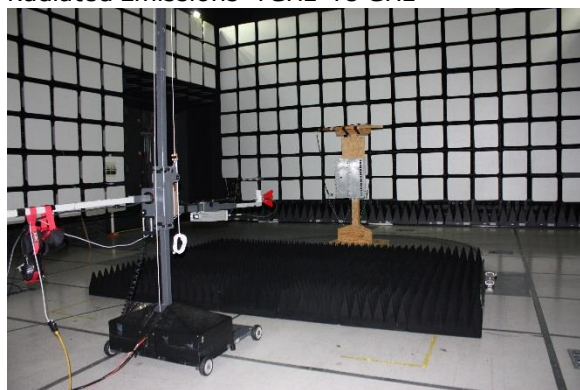
Radiated Emissions 30MHz-200MHz



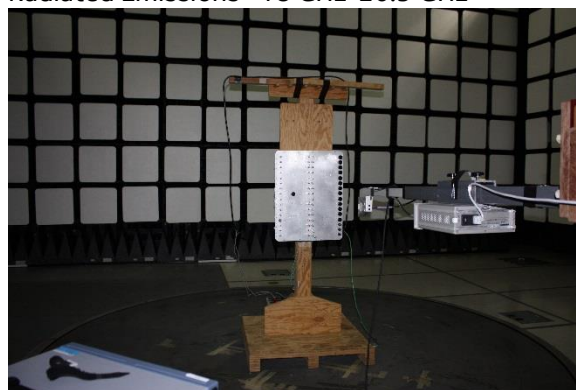
Radiated Emissions 200MHz-1GHz



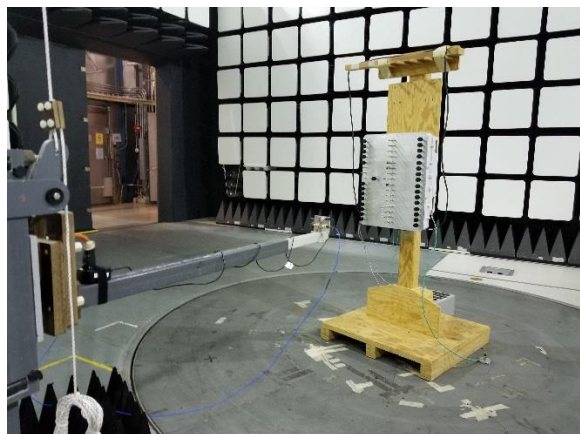
Radiated Emissions 1GHz-18 GHz



Radiated Emissions 18 GHz-26.5 GHz

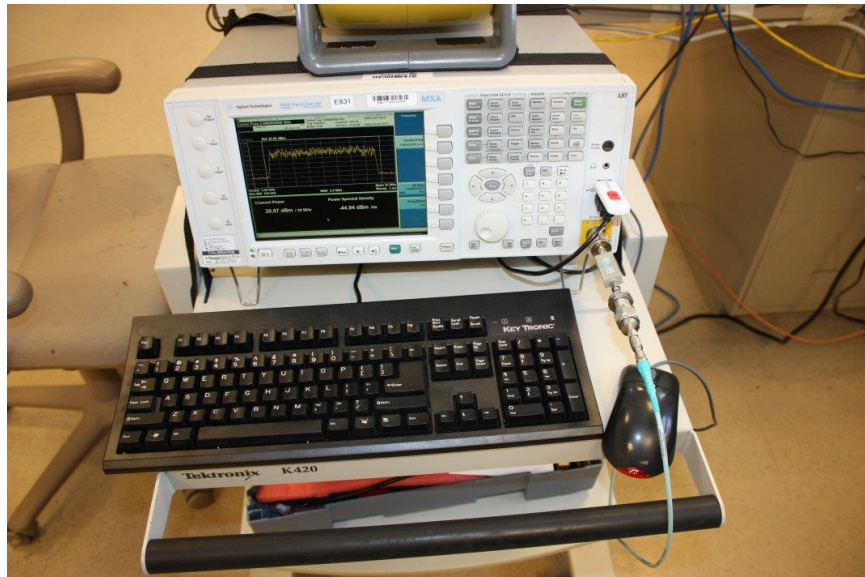
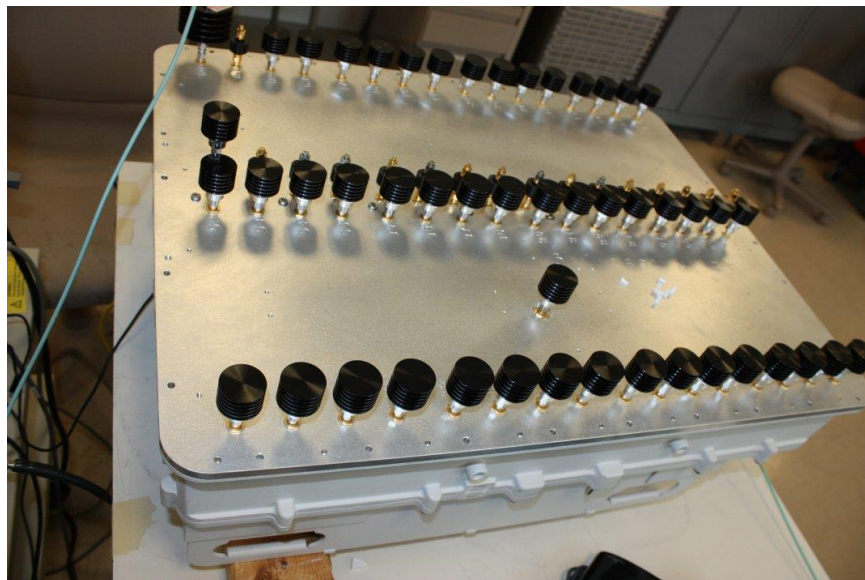


Radiated Emissions 26.5 GHz – 30 GHz



### 1.3 Antenna Port Test Set Up Photographs

The Antenna Port Test Setup photographs are below.



## 1.4 Frequency Stability Test Set Up Photographs

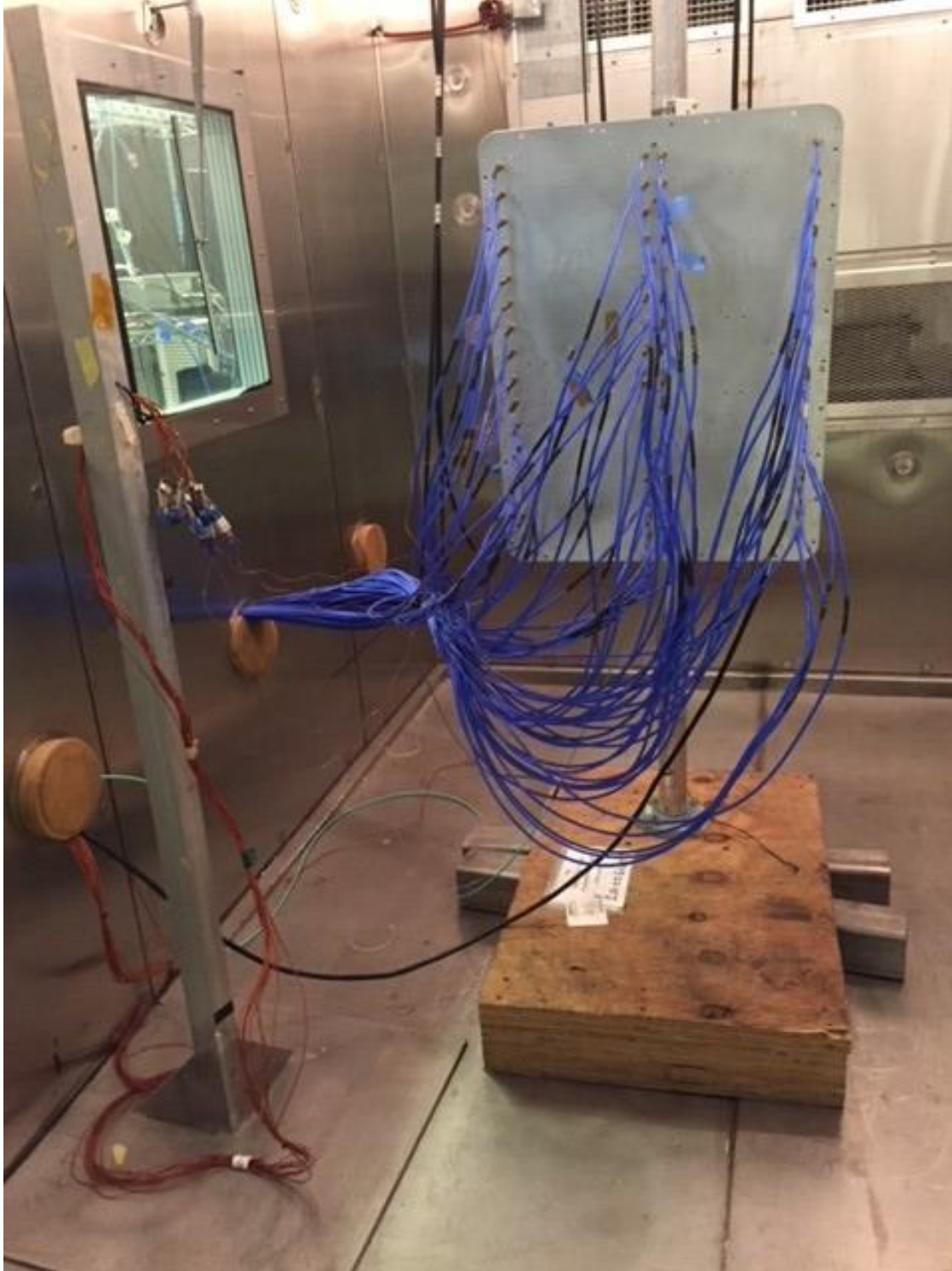
The Frequency Stability Test Setup photographs are below.

### Thermal Chamber Setup





**Thermal Chamber Setup**



**Thermal Chamber Test Equipment Setup**

