

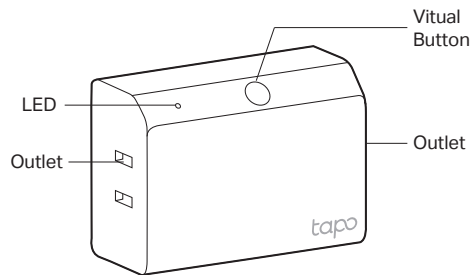


## Quick Start Guide

### Smart Wi-Fi Lamp Dimmer Kit

Tapo P135: Smart Wi-Fi Lamp Dimmer  
Tapo S135B: Smart Dimming Button

#### Appearance



##### • Outlet \*2

Connect lamps and control them simultaneously

##### • Virtual Button

Touch once: Turn on/off lamps

Touch and hold for 5s: Reset Wi-Fi while keeping other existing settings

Touch and hold for 10s: Reset to factory default settings

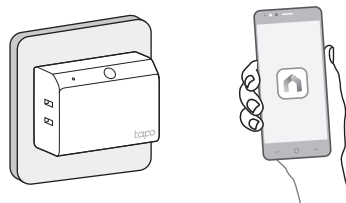
#### 1 Download the Tapo App

Download the Tapo app from the App Store or Google Play.



#### 2 Set Up with the Tapo App

Open the Tapo app. Select **Plugs** and then your model. Follow the app instructions to complete setup.



#### Set Up with Matter

This is a Matter-certified device. You can integrate it into any Matter ecosystem you prefer for easy control.

##### How to Set Up

A Matter-supported **controller** and **smart home app** of the same ecosystem are required.

1. Turn on Bluetooth on your phone.
2. Open your selected smart home app and scan the provided Matter QR code on your device.
3. Follow the instructions in the app to complete setup.

\*Setup processes may vary between ecosystems.

##### Failed to Set Up?

- Try to connect your phone to a stable **2.4 GHz** Wi-Fi network with internet access instead of a **5 GHz** network.
- Unplug your device and plug it back in.
- Refer to the FAQ for detailed instructions: <https://www.tp-link.com/support/faq/3520/>

#### 3 Connect Lamps

Connect lamps to the outlets and control them simultaneously. If you connect two lamps, make sure they are with the same dimming type.

! Lamps only. Do NOT exceed the max load.  
Max Load: 150W LED 150W CFL 300W INC

✓ Supported Dimming Type:  
Leading Edge Dimming / TRIAC Phase Cut  
\*It's also suggested to contact your bulb's Support to check the supported dimming type of the bulb.

✗ Lamps powered by power adapters are not allowed.

If lights are too bright when dimming to the minimum level or lights are flickering:

1. Make sure the lights connected to the outlets are **with the same load**.
2. Open the Tapo app and go to **Device Settings** to adjust the dimming range.

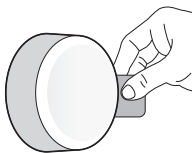
7106509973 REV1.0.0

Images may differ from actual products.



## 4 Use Dimmer Button to Control Lights

Remove the battery insulation tab to power up your dimmer button. It will be paired with the dimmer automatically. You can tap or rotate the button to control lights.

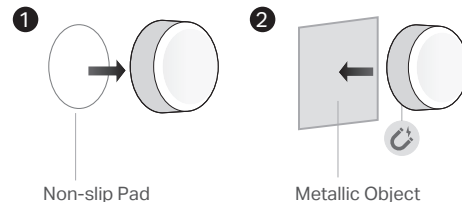


If you can't control the lights, try to move closer or manually pair the button with the dimmer.

How to pair manually:

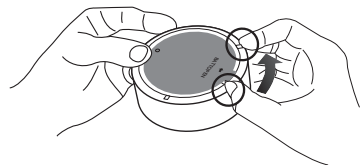
- Unplug the dimmer and plug it back in.
- Within 20 seconds, press the button to start pairing.
- The LED on the dimmer quickly flashes green and orange indicating the successful pairing.

(Optional) Attach the non-slip pad to the button to keep it firmly in place. Magnetically attach the button to metallic objects.



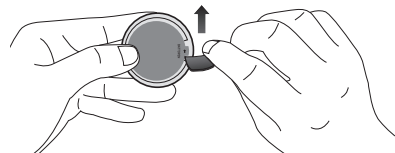
## How to replace the battery of Dimmer Button

### 1 Option 1: By Hand

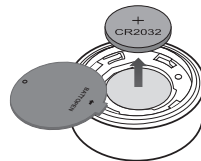


OR

### Option 2: With a Shim



### 2 Replace Battery



## Specifications

Rating: 100-120V~ 50/60Hz

Max Load: 150W LED 150W CFL 300W INC

Operation temperature: 0~40°C

ELECTRONIC – DISCONNECTION (Type 1.Y)

**⚠ CAUTION! (Safety Information)**

RISK OF EXPLOSION IF BATTERY IS REPLACED BY AN INCORRECT TYPE  
DISPOSE OF USED BATTERIES ACCORDING TO THE INSTRUCTIONS

Do not ingest battery, Chemical Burn Hazard.

Keep new and used batteries away from children.

This product contains a coin / button cell battery. If the coin / button cell battery is swallowed, it can cause severe internal burns in just 2 hours and can lead to death.

If the battery compartment does not close securely, stop using the product and keep it away from children.

If you think batteries might have been swallowed or placed inside any part of the body, seek immediate medical attention.

Avoid disposal of a battery into fire or a hot oven, or mechanically crushing or cutting of a battery, that can result in an explosion.

The battery must be removed from the CONTROL before it is scrapped.

The battery is to be disposed of safely. Do not leave a battery in an extremely high temperature surrounding environment that can result in an explosion or the leakage of flammable liquid or gas; Do not leave a battery subjected to extremely low air pressure that may result in an explosion or the leakage of flammable liquid or gas.

Stop using the dimmer button if the battery leaks in the battery compartment. In the event of a battery leaking, do not allow the liquid to come in contact with the skin or eyes. If contact has been made, wash the affected area with copious amounts of water and seek medical advice.

Keep the device away from water, fire, humidity or hot environments.

Do not attempt to disassemble, repair, or modify the device. If you need service, please contact us.

Do not use the device where wireless devices are not allowed.

For passthrough devices, plug the power strips into the integrated electrical sockets of the devices, but devices of the same or another type not be stacked in normal use. Do not plug in a row.



Please read and follow the above safety information when operating the device. We cannot guarantee that no accidents or damage will occur due to improper use of the device. Please use this product with care and operate at your own risk.

?

**Need some help?**

Visit <https://www.tapo.com/support/> for technical support, the user guide, FAQs, warranty & more

This equipment has been tested and found to comply with the limits for a Class B digital device, pursuant to part 15 of the FCC Rules. These limits are designed to provide reasonable protection against harmful interference in a residential installation. This equipment generates, uses and can radiate radio frequency energy and, if not installed and used in accordance with the instructions, may cause harmful interference to radio communications. However, there is no guarantee that interference will not occur in a particular installation. If this equipment does cause harmful interference to radio or television reception, which can be determined by turning the equipment off and on, the user is encouraged to try to correct the interference by one or more of the following measures:

- Reorient or relocate the receiving antenna.
- Increase the separation between the equipment and receiver.
- Connect the equipment into an outlet on a circuit different from that to which the receiver is connected.
- Consult the dealer or an experienced radio/ TV technician for help.

This device complies with part 15 of the FCC Rules. Operation is subject to the following two conditions:

- 1) This device may not cause harmful interference.
- 2) This device must accept any interference received, including interference that may cause undesired operation.

Any changes or modifications not expressly approved by the party responsible for compliance could void the user's authority to operate the equipment.

Note: The manufacturer is not responsible for any radio or TV interference caused by unauthorized modifications to this equipment. Such modifications could void the user's authority to operate the equipment.

### **FCC RF Radiation Exposure Statement:**

for Tapo P135:

This equipment complies with FCC RF radiation exposure limits set forth for an uncontrolled environment. This device and its antenna must not be co-located or operating in conjunction with any other antenna or transmitter.

“To comply with FCC RF exposure compliance requirements, this grant is applicable to only Mobile Configurations. The antennas used for this transmitter must be installed to provide a separation distance of at least 20 cm from all persons and must not be co-located or operating in conjunction with any other antenna or transmitter.”

for Tapo S135B:

This equipment complies with FCC RF radiation exposure limits set forth for an uncontrolled environment. This device and its antenna must not be co-located or operating in conjunction with any other antenna or transmitter.

### **NCC Notice**

注意！

取得審驗證明之低功率射頻器材，非經核准，公司、商號或使用者均不得擅自變更頻率、加大功率或變更原設計之特性及功能。

低功率射頻器材之使用不得影響飛航安全及干擾合法通信；經發現有干擾現象時，應立即停用，並改善至無干擾時方得繼續使用。

前述合法通信，指依電信管理法規定作業之無線電通信。

低功率射頻器材須忍受合法通信或工業、科學及醫療用電波輻射性電機設備之干擾。