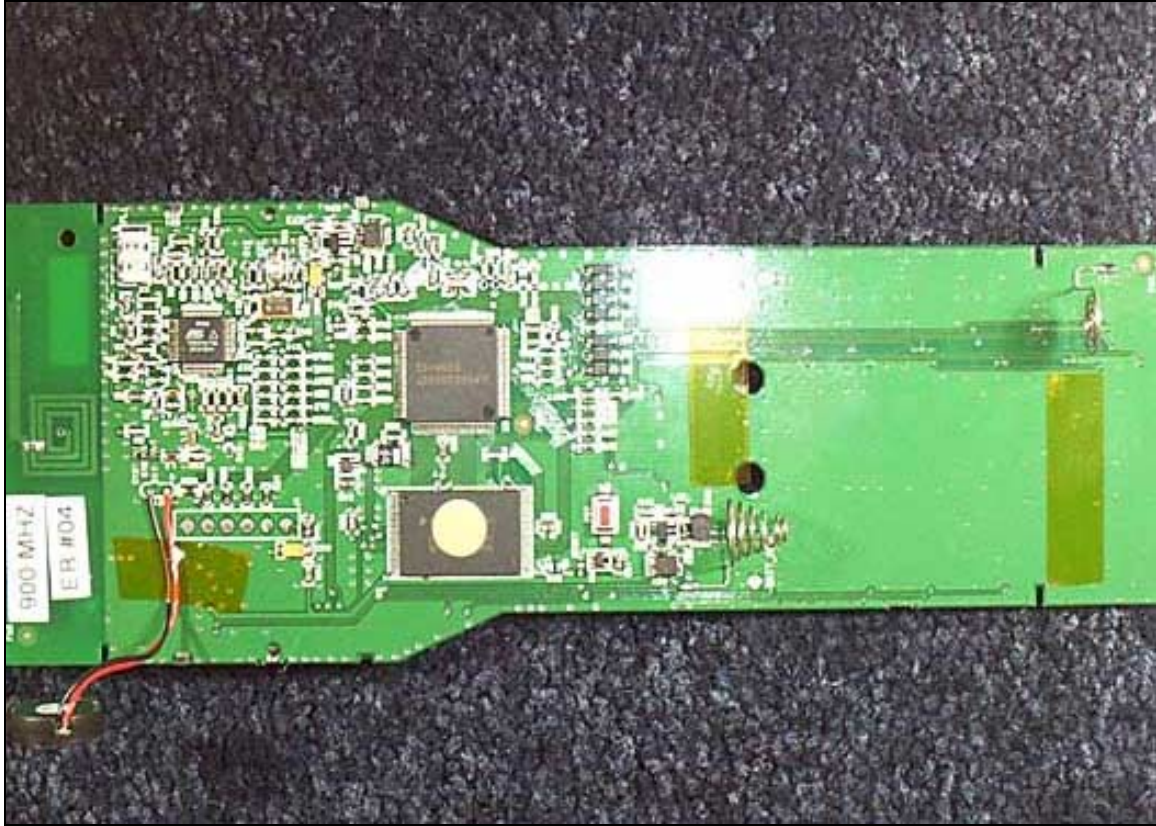




Remote Cover and Board Removed



Remove Inside of Front Panel

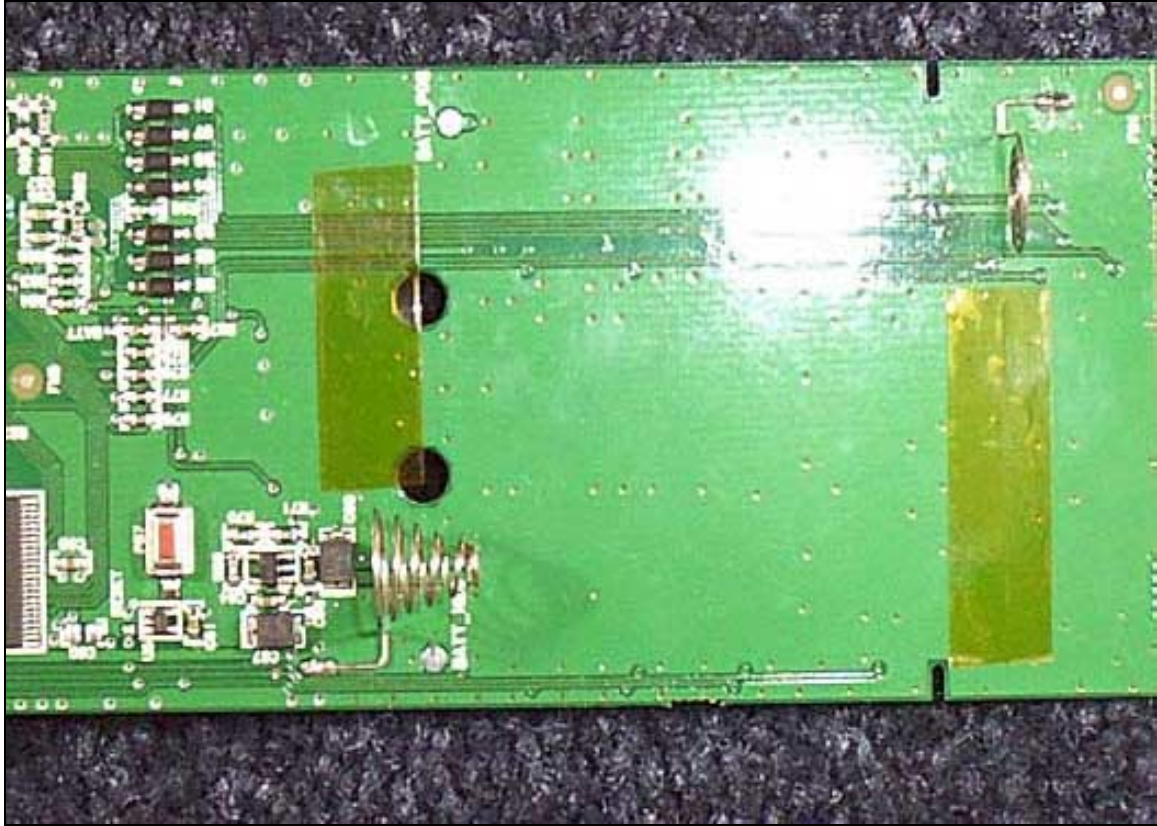


Remote PCB Front

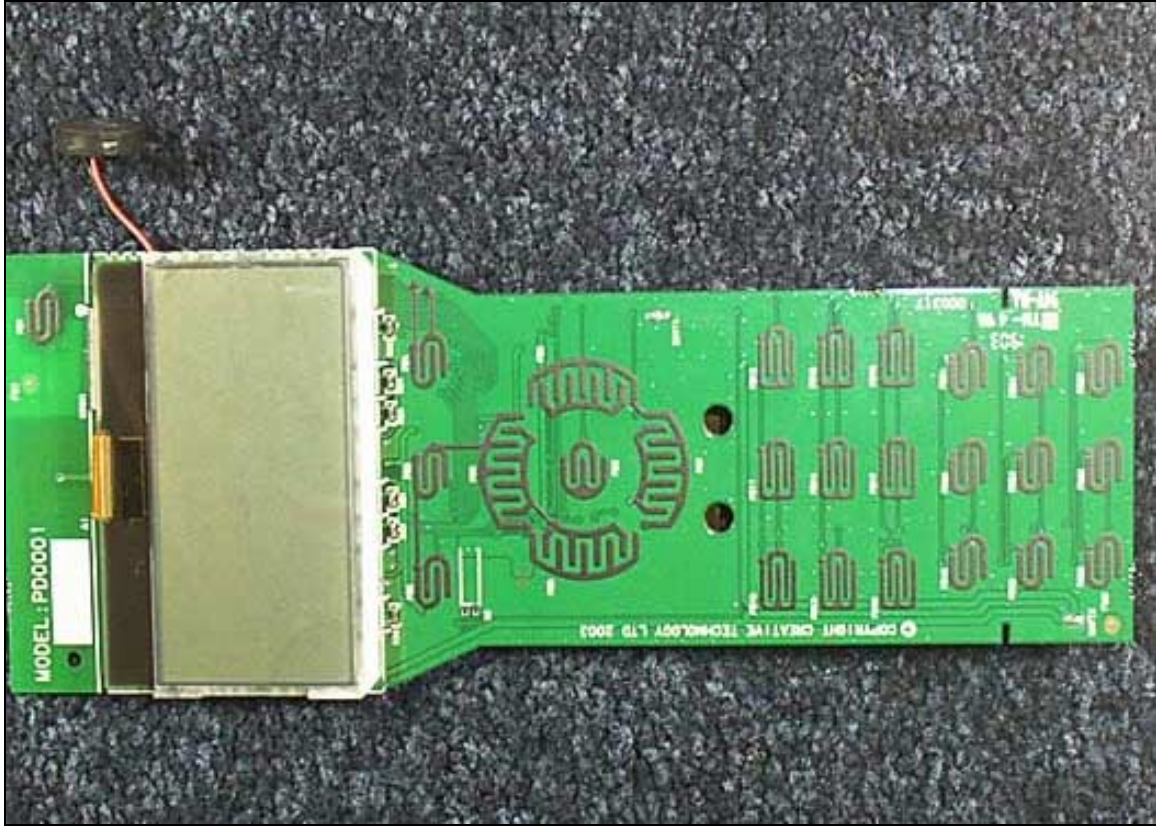




Remote PCB Front Close Up 1

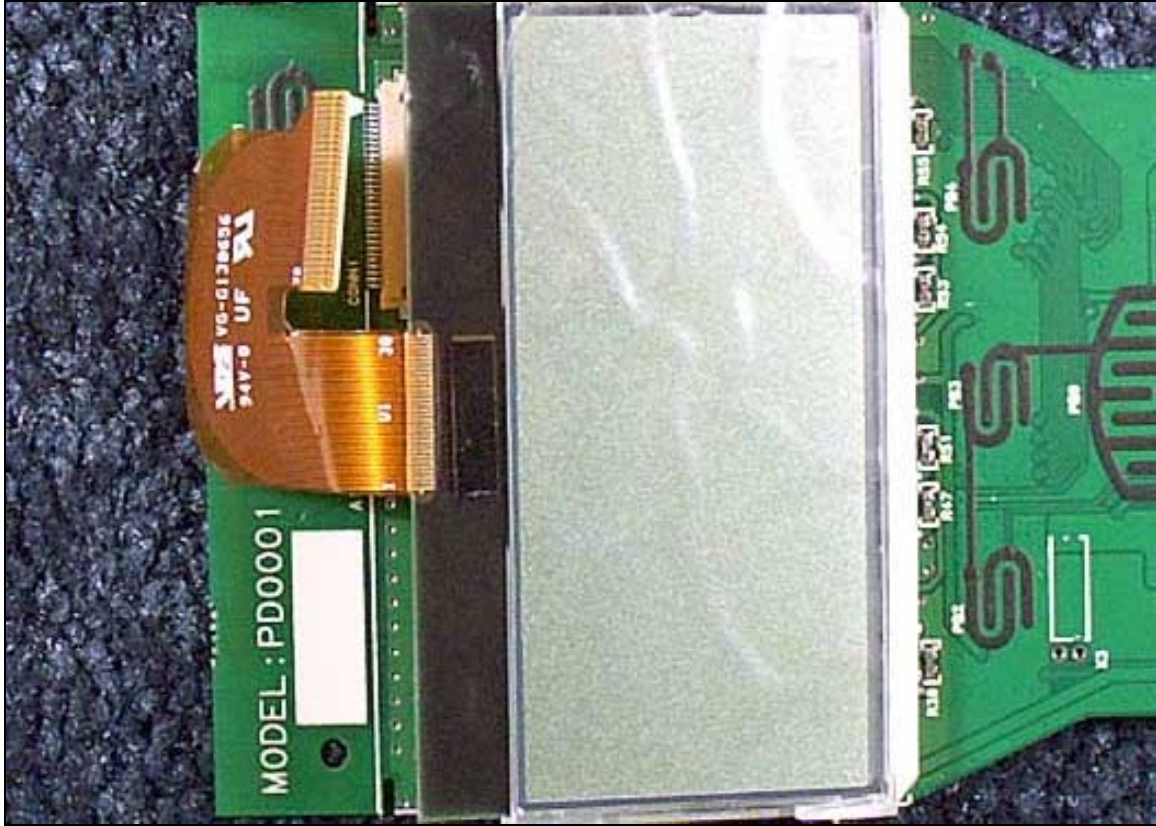


Remote PCB Front Close Up 2



Remote PCB Back



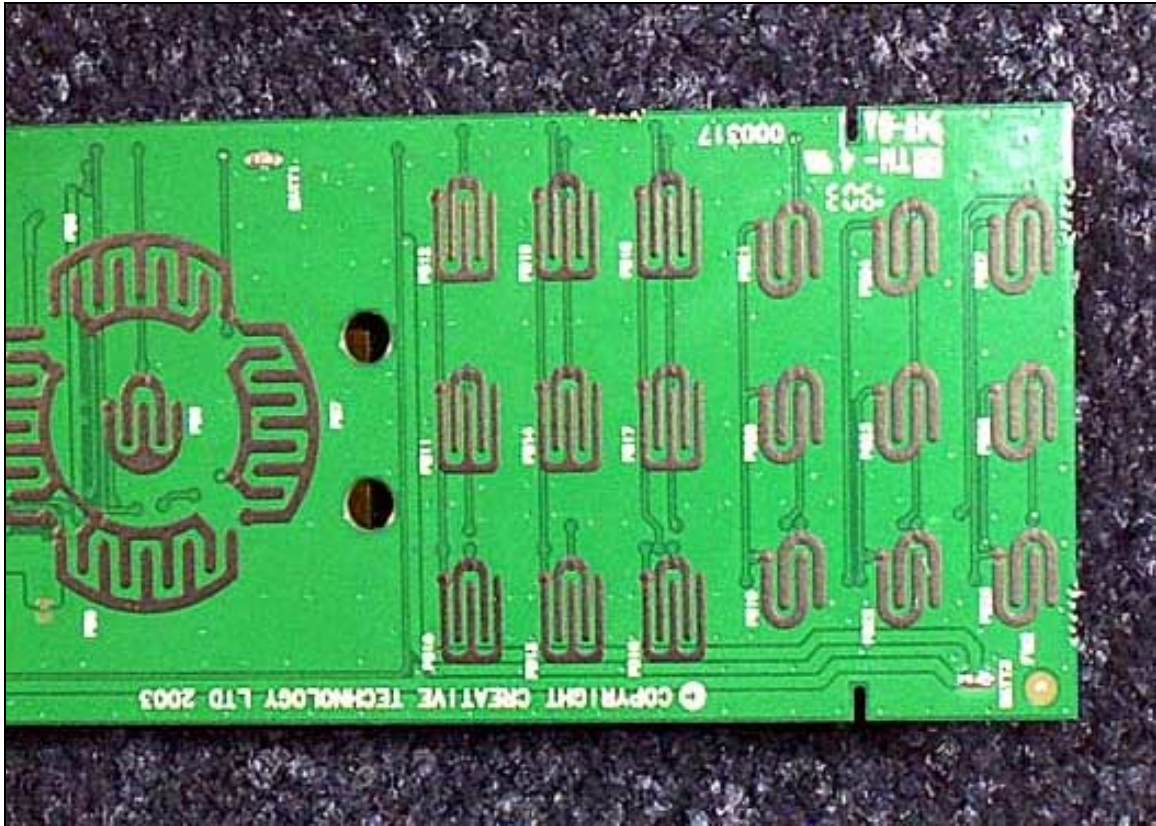


Remote PCB Back Close Up 1



Remote PCB Back Close Up 2 (LCD Removed)





Remote PCB Back Close Up 3