

WiFi 2.4GHz

Frequency: 2412 MHz; Duty Cycle: 1:1; Room Ambient Temperature: 23.7°C; Liquid Temperature: 22.5°C
Medium parameters used (interpolated): $f = 2412$ MHz; $\sigma = 1.84$ S/m; $\epsilon_r = 38.011$; $\rho = 1000$ kg/m³

DASY5 Configuration:

- Area Scan Setting: Find Secondary Maximum Within: 2.0 dB and with a peak SAR value greater than 0.0012W/kg
- Electronics: DAE4 Sn1260; Calibrated: 2021/9/20
- Probe: EX3DV4 - SN3665; ConvF(7.28, 7.28, 7.28) @ 2412 MHz; Calibrated: 2021/8/25
- Sensor-Surface: 2mm (Mechanical Surface Detection)
- Phantom: ELI

Rear/802.11b Ch 1_0mm/Area Scan (71x101x1): Interpolated grid: $dx=1.200$ mm, $dy=1.200$ mm
Maximum value of SAR (interpolated) = 1.30 W/kg

Rear/802.11b Ch 1_0mm/Zoom Scan (7x7x7)/Cube 0: Measurement grid: $dx=5$ mm, $dy=5$ mm, $dz=5$ mm

Reference Value = 14.13 V/m; Power Drift = -0.11 dB

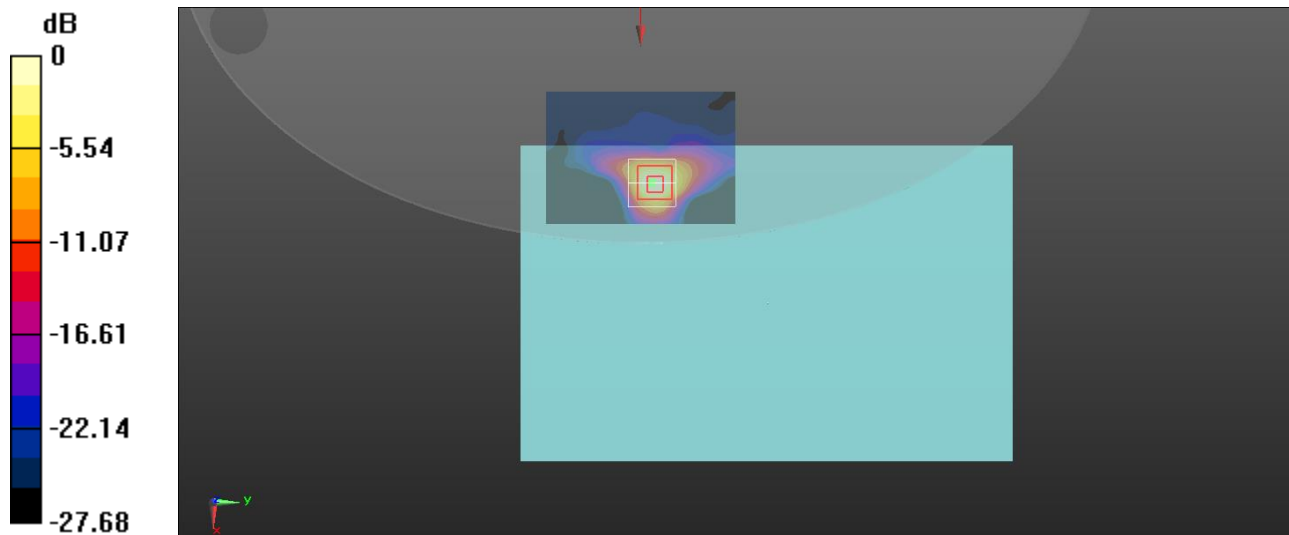
Peak SAR (extrapolated) = 1.75 W/kg

SAR(1 g) = 0.742 W/kg; SAR(10 g) = 0.291 W/kg

Smallest distance from peaks to all points 3 dB below = 8.5 mm

Ratio of SAR at M2 to SAR at M1 = 45.6%

Maximum value of SAR (measured) = 1.21 W/kg



0 dB = 1.21 W/kg = 0.83 dBW/kg

WiFi 5GHz_Rear_802.11a_Ch 44_0mm

Frequency: 5220 MHz; Duty Cycle: 1:1; Room Ambient Temperature: 23.3°C; Liquid Temperature: 22.6°C
Medium parameters used: $f = 5220 \text{ MHz}$; $\sigma = 4.576 \text{ S/m}$; $\epsilon_r = 34.555$; $\rho = 1000 \text{ kg/m}^3$

DASY5 Configuration:

- Area Scan Setting: Find Secondary Maximum Within: 2.0 dB and with a peak SAR value greater than 0.0012W/kg
- Electronics: DAE4 Sn1260; Calibrated: 2021/9/20
- Probe: EX3DV4 - SN3665; ConvF(5.4, 5.4, 5.4) @ 5220 MHz; Calibrated: 2021/8/25
- Sensor-Surface: 2mm (Mechanical Surface Detection)
- Phantom: ELI

Rear/802.11a Ch 44_0mm/Area Scan (91x121x1): Interpolated grid: $dx=1.000 \text{ mm}$, $dy=1.000 \text{ mm}$
Maximum value of SAR (interpolated) = 0.756 W/kg

Rear/802.11a Ch 44_0mm/Zoom Scan (7x7x12)/Cube 0: Measurement grid: $dx=4\text{mm}$, $dy=4\text{mm}$, $dz=2\text{mm}$

Reference Value = 12.18 V/m; Power Drift = -0.11 dB

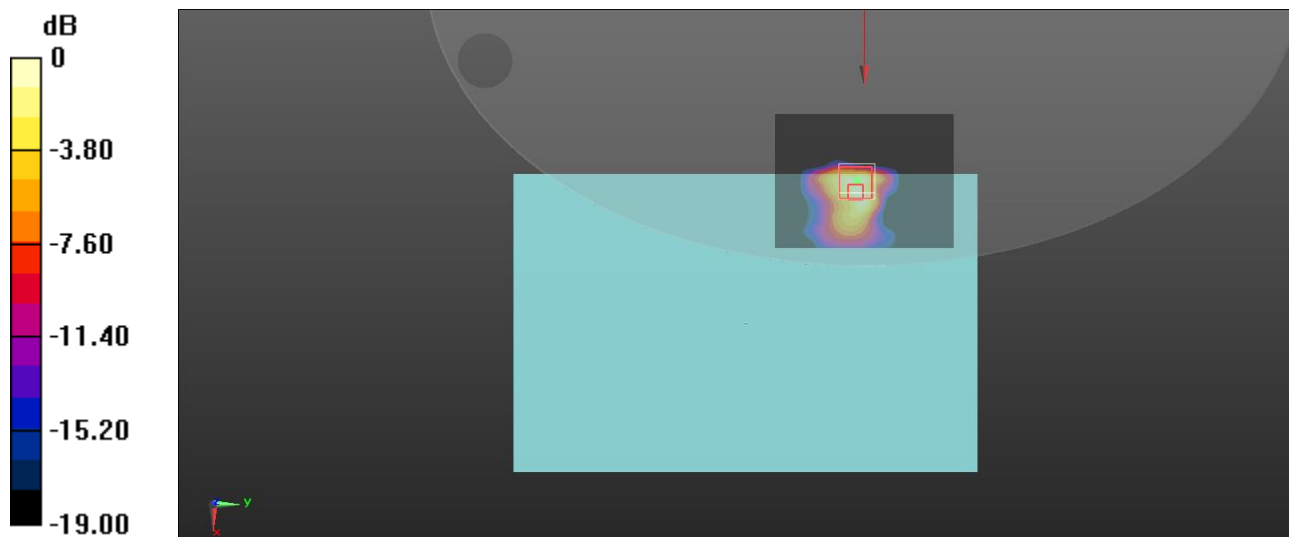
Peak SAR (extrapolated) = 1.57 W/kg

SAR(1 g) = 0.394 W/kg; SAR(10 g) = 0.127 W/kg

Smallest distance from peaks to all points 3 dB below = 8.4 mm

Ratio of SAR at M2 to SAR at M1 = 55.6%

Maximum value of SAR (measured) = 0.813 W/kg



0 dB = 0.813 W/kg = -0.90 dBW/kg

Bluetooth

Frequency: 2480 MHz; Duty Cycle: 1:1; Room Ambient Temperature: 23.8°C; Liquid Temperature: 22.3°C
Medium parameters used: $f = 2480$ MHz; $\sigma = 1.921$ S/m; $\epsilon_r = 39.372$; $\rho = 1000$ kg/m³

DASY5 Configuration:

- Area Scan Setting: Find Secondary Maximum Within: 2.0 dB and with a peak SAR value greater than 0.0012W/kg
- Electronics: DAE4 Sn1260; Calibrated: 2021/9/20
- Probe: EX3DV4 - SN3665; ConvF(7.28, 7.28, 7.28) @ 2480 MHz; Calibrated: 2021/8/25
- Sensor-Surface: 2mm (Mechanical Surface Detection)
- Phantom: ELI

Rear/LE_1 Mbps Ch 39_0mm/Area Scan (71x101x1): Interpolated grid: dx=1.200 mm, dy=1.200 mm

Maximum value of SAR (interpolated) = 0.0463 W/kg

Rear/LE_1 Mbps Ch 39_0mm/Zoom Scan (7x7x7)/Cube 0: Measurement grid: dx=5mm, dy=5mm, dz=5mm

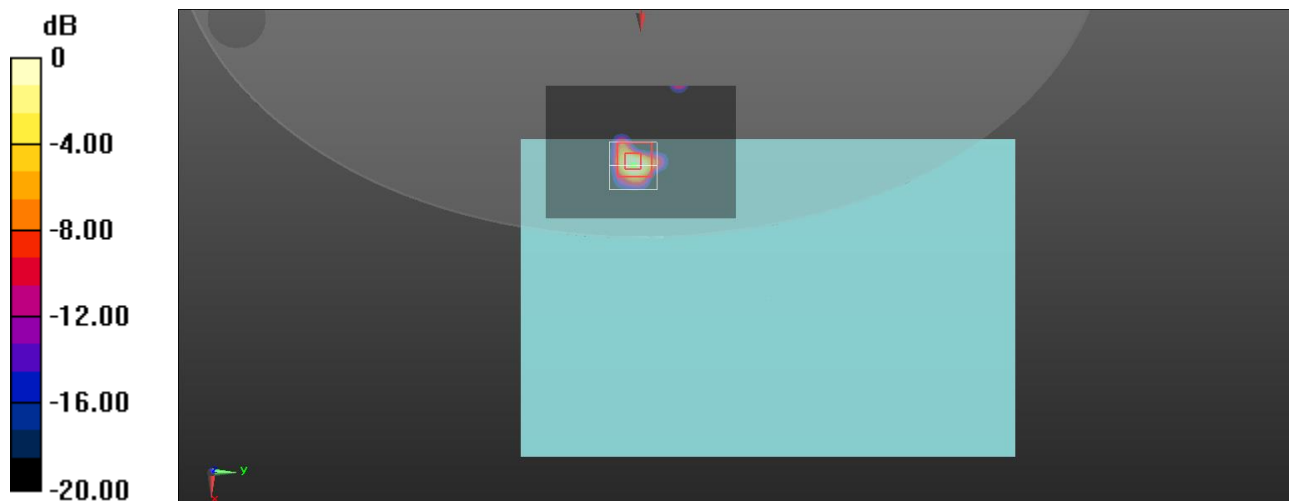
Reference Value = 3.294 V/m; Power Drift = -0.03 dB

Peak SAR (extrapolated) = 0.0440 W/kg

SAR(1 g) = 0.016 W/kg; SAR(10 g) = 0.00563 W/kg

Ratio of SAR at M2 to SAR at M1 = 39.4%

Maximum value of SAR (measured) = 0.0288 W/kg



0 dB = 0.0288 W/kg = -15.41 dBW/kg