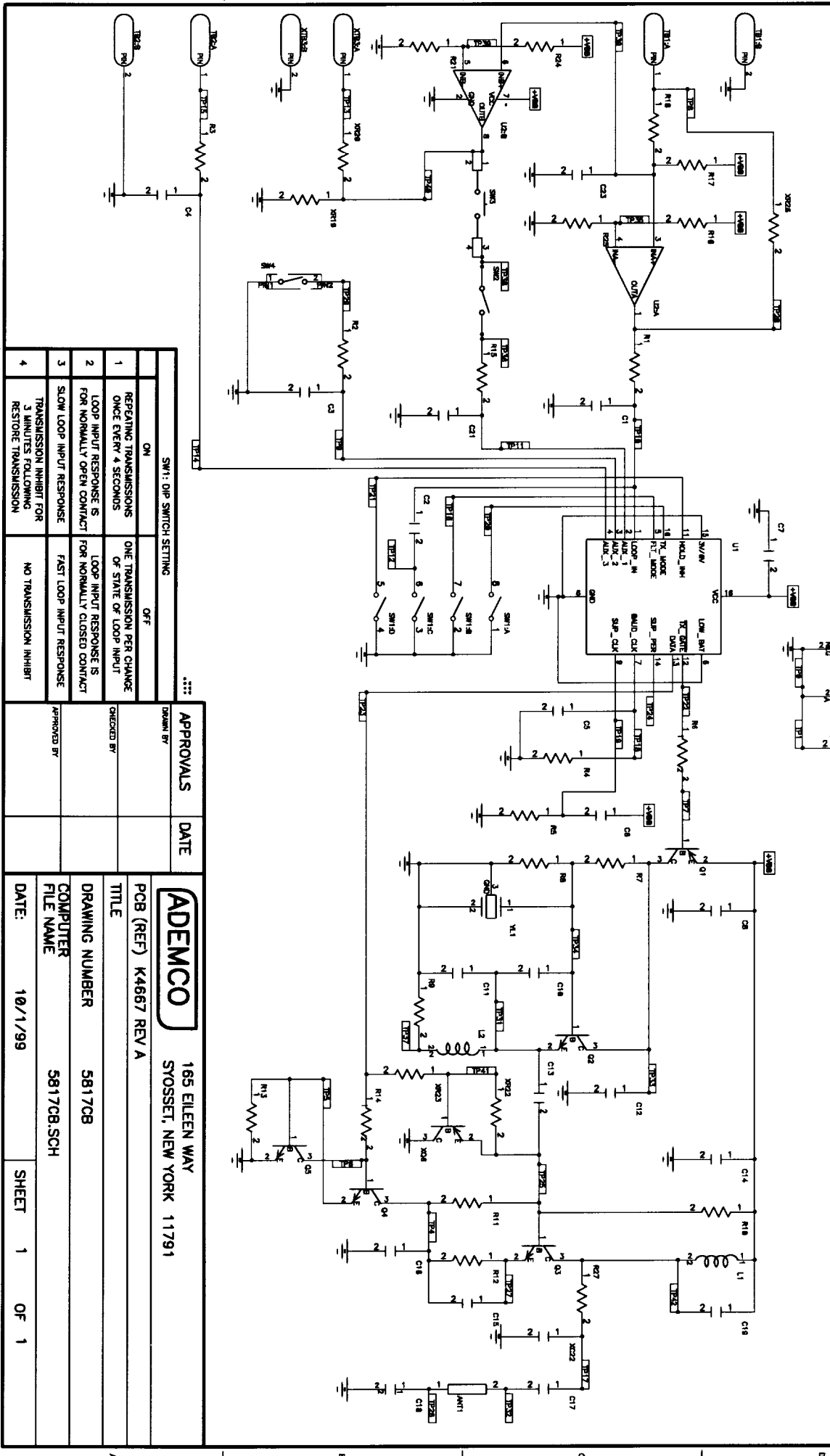


ASSY REV	PRODUCTION RELEASE	DNM	6/16/00



SW1: DIP SWITCH SETTING	
ON	OFF
1 REPEATING TRANSMISSIONS ONCE EVERY 4 SECONDS	ONE TRANSMISSION PER CHANGE OF STATE OF LOOP INPUT
2 LOOP INPUT RESPONSE IS FOR NORMALLY OPEN CONTACT	LOOP INPUT RESPONSE IS FOR NORMALLY CLOSED CONTACT
3 SLOW LOOP INPUT RESPONSE	FAST LOOP INPUT RESPONSE
4 TRANSMISSION INHIBIT FOR 3 MINUTES FOLLOWING RESTORE TRANSMISSION	NO TRANSMISSION INHIBIT

APPROVALS	DATE
DESIGNED BY	
CHECKED BY	
APPROVED BY	
PCB (REF) K4667 REV A	
TITLE	
DRAWING NUMBER 581708	
COMPUTER FILE NAME 581708.SCH	
DATE: 10/1/99	SHEET 1 OF 1

ADEMCO 165 EILEEN WAY
SYOSSET, NEW YORK 11791