

1



2



3



4

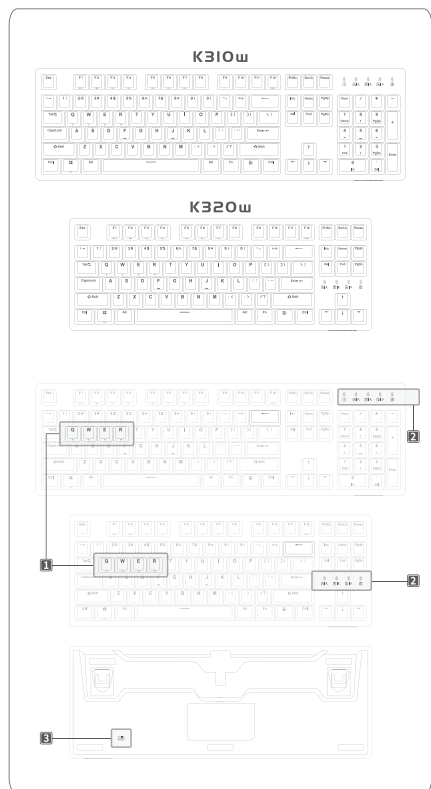


5



6

## ABOUT DEVICE



### 01 / SHORTCUT KEYS

|  |          |                                           |
|--|----------|-------------------------------------------|
|  | Fn + Q   | Switch to Bluetooth device 1              |
|  | Fn + W   | Switch to Bluetooth device 2              |
|  | Fn + E   | Switch to 2.4GHz wireless connection mode |
|  | Fn + R   | Switch to USB connection mode             |
|  | Fn + F12 | Invoke the on-board configuration profile |

### 02 / INDICATOR LIGHTS

| K310w           |                                     |                                                |
|-----------------|-------------------------------------|------------------------------------------------|
| Indicator Light | Normal Indicator Status *           | Wireless Connection Status Indicator **        |
|                 | Number Lock Indicator Light         |                                                |
|                 | Caps Lock Indicator                 | Bluetooth device 1 connection status indicator |
|                 | Windows Key Lock Indicator (Fn+Win) | Bluetooth device 2 connection status indicator |
|                 | Configuration profile indicator     | 2.4GHz wireless connection status indicator    |
|                 | Battery Indicator                   |                                                |

| K320w           |                                     |                                                |
|-----------------|-------------------------------------|------------------------------------------------|
| Indicator Light | Normal Indicator Status *           | Wireless Connection Status Indicator **        |
|                 | Caps Lock Indicator                 | Bluetooth device 1 connection status indicator |
|                 | Windows Key Lock Indicator (Fn+Win) | Bluetooth device 2 connection status indicator |
|                 | Configuration profile indicator     | 2.4GHz wireless connection status indicator    |
|                 | Battery Indicator                   |                                                |

- \* When K310w/K320w is successfully connected and functions normally, the indicators lights should also work normally.
- \*\* When K310w/K320w pairing is available, the corresponding indicator light flashes quickly.

When K310w/K320w is paired but cannot connect, the corresponding indicator light flashes slowly. Please check if the switch is connected to function normally.

When K310w/K320w is successfully connected, the corresponding indicator light will be on for 3 seconds and then revert back to the normal indicator status.

### 03 / WIRELESS SWITCH



#### CONNECTION SPECIFICATIONS

| KEYBOARD        |                                                                |
|-----------------|----------------------------------------------------------------|
| BLUETOOTH       | Frequency range: 2402MHz-2480MHz Transmitter power: < -2.58dbm |
| 2.4GHZ WIRELESS | Frequency range: 2402MHz-2480MHz Transmitter power: < -0.58dbm |
| RECEIVER        |                                                                |
| 2.4GHZ WIRELESS | Frequency range: 2402MHz-2480MHz Transmitter power: < 3.58dbm  |

## BLUETOOTH CONNECTION

### 1 Turn on wireless switch.



### 2

Enter Bluetooth mode by pressing FN+Q/W.

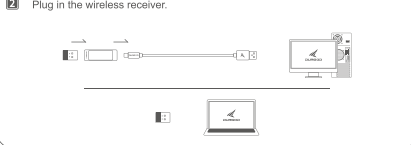
The corresponding indicator light flashes quickly upon initial use. Search for K310w/K320w on a device that supports Bluetooth low energy technology and complete the pairing according to the on-device prompts. The corresponding indicator light will be on for 3 seconds and then revert back to the normal indicator status. If re-pairing is needed, long press FN+Q/W for 3 seconds until the indicator light flashes quickly, and then users can proceed with re-pairing.

## 2.4GHz WIRELESS CONNECTION

### 1 Turn on wireless switch.



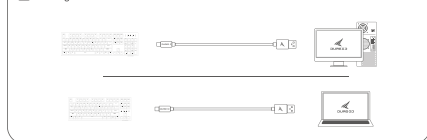
### 2 Plug in the wireless receiver.



Press FN+E to enter 2.4GHz wireless connection mode, after which the device will connect automatically. The indicator light will be on for 3 seconds and then revert back to the normal indicator status.

## USB WIRED CONNECTION

### 1 Plug in the USB cable.



### 2

Press FN+R to enter USB wired connection mode.

## LEARN MORE

Check out [www.durgod.com](http://www.durgod.com) and download "Durgod Zeus Engine" to get:

- The latest firmware updates
- Entire key customization
- Macro editing function
- On-board and cloud storage of configuration profiles
- The latest information on Durgod products



Zhuhai Hoki Technology Co., Ltd.  
Room 801, Building A, Hoki Technology & Industry Park, Zhuhai City, China

Sales: Email:sales@durgod.com Support: Email:support@durgod.com

Copyright © 2017 Zhuhai Hoki Technology Co., Ltd. All rights reserved. All copyrights or trademarks are the property of their respective owners. This manual is for reference only and does not constitute any form of contract.

## 保修服务卡

|         |  |
|---------|--|
| 产品型号    |  |
| 购买日期    |  |
| 用户姓名    |  |
| 联系电话    |  |
| 通讯地址/邮编 |  |
| 产品S/N码  |  |

质量检测合格



厂商: 珠海市学思电子科技有限公司  
地址: 珠海市香洲区南屏科技园屏北一路6号南翔丰大厦8楼

## 保修服务指南

### 感谢您对DURGOD(杜伽)的信任与支持

DURGOD将为您提供一年的产品免费保修服务, 请勿擅自涂改本保修服务卡, 以维护您的合法权益。如需服务或技术支持, 请咨询相关经销商或与我们联系。

### 我们承诺

对保修期间内在保修服务范围内的产品, DURGOD将按照本服务政策进行维修。更换或维修在合理的时间范围内免费为您恢复产品的正常使用功能; 对超出保修期和保修服务范围之外的产品, DURGOD将按照本服务政策提供有偿维修服务。

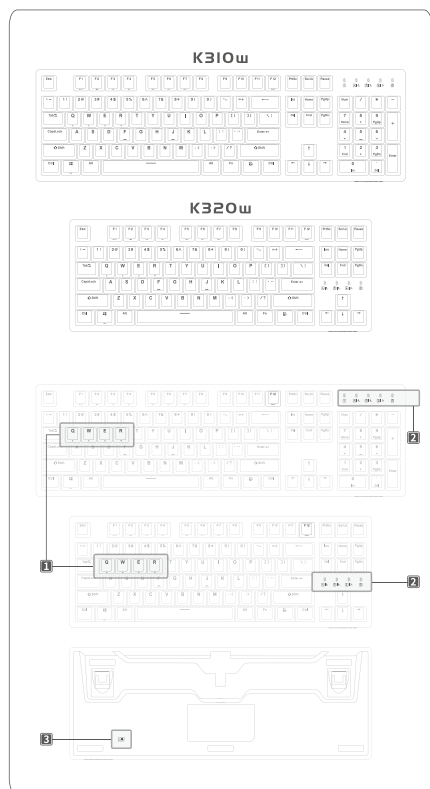
### 保修服务时须提供

1. 申请保修的DURGOD产品或附件。
2. 有效的购买凭证。

### 质保不包含一下原因导致的问题和损坏:

1. 产品正常使用磨损。
2. 由于人为原因造成的损坏, 包括但不限于因跌落、挤压、碰撞造成的损坏, 因液体泼洒、化学品腐蚀、异物进入内部造成的损坏。
3. 因使用、保养、维护不当造成的损坏。
4. 产品被任何未经授权方拆除、维修、批次号去除、涂改至难以辨认等。
5. 产品超出保修期。
6. 因不可抗力损坏。

## 了解设备



### 01 / 快捷键

|  |          |            |
|--|----------|------------|
|  | Fn + Q   | 切换蓝牙设备 1   |
|  | Fn + W   | 切换蓝牙设备 2   |
|  | Fn + E   | 切换2.4G无线模式 |
|  | Fn + R   | 切换USB模式    |
|  | Fn + F12 | 调用预载配置文件   |

### 02 / 指示灯

| K310w |                 |
|-------|-----------------|
| 指示灯   | 正常指示状态 *        |
|       | 数字锁定指示灯         |
|       | 大小写指示灯          |
|       | 按键 (Fn+Win) 指示灯 |
|       | 配置文件指示灯         |
|       | 电量指示灯           |

| K320w |                 |
|-------|-----------------|
| 指示灯   | 正常指示状态 *        |
|       | 大小写指示灯          |
|       | 按键 (Fn+Win) 指示灯 |
|       | 配置文件指示灯         |
|       | 电量指示灯           |

- \* 当 K310w/K320w 已充电或连接并可正常使用时, 指示灯进入正常指示状态。

\*\* 当在连接模式或在低功耗模式时, 指示灯熄灭。

当在连接模式或在低功耗模式未连接时, 指示灯熄灭, 此时请检查对应的连接设备是否连接正常。

当在连接模式正确连接上时, 指示灯常亮3秒后, 进入正常指示状态。

### 03 / 无线开关



#### 连接参数

| 键盘       |                                        |
|----------|----------------------------------------|
| 蓝牙       | 频率范围: 2402MHz-2480MHz 发射功率: < -2.58dbm |
| 2.4GHz无线 | 频率范围: 2402MHz-2480MHz 发射功率: < -0.58dbm |
| 接收器      |                                        |
| 2.4GHz无线 | 频率范围: 2402MHz-2480MHz 发射功率: < 3.58dbm  |

## 蓝牙设备连接

### 1 无线开关处于ON的状态。



### 2

FN+Q / W 进入蓝牙模式。

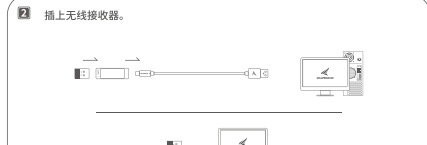
初次进入蓝牙模式, 对应的指示灯闪烁, 在支持蓝牙低功耗技术的设备上搜索设备, 根据设备提示完成配对, 对应指示灯常亮3秒后恢复正常指示状态。如需重新配对, 长按 FN+Q/W 3秒重置对应指示灯闪烁, 则可重新进行配对。

## 2.4G 无线连接

### 1 无线开关处于ON的状态。



### 2 插上无线接收器。

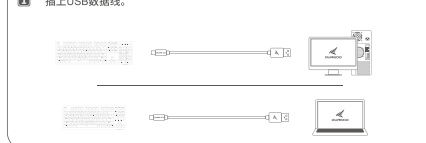


### 3

FN+E进入2.4G无线模式, 设备自动完成连接, 对应指示灯常亮3秒后恢复正常指示状态。

## USB有线连接

### 1 插上USB数据线。



### 2

FN+R进入USB模式。

## 获取更多

访问<http://www.durgod.com>, 下载DURGOD ZEUS ENGINE, 您将获得:

- 最新的固件升级
- 全键自定义
- 宏编辑功能
- 配置文件云端存储与云存储
- 最新的产品资讯



珠海市学思电子科技有限公司  
珠海市香洲区南屏科技园屏北一路6号南翔丰大厦8楼  
客服电话: 400-878-3333  
邮箱: sales@durgod.com  
技术支持: support@durgod.com

版权所有 © 2017 珠海市学思电子科技有限公司。保留一切权利, 未经授权使用或复制本手册内容, 本手册内容, 不得用于任何形式或目的。



TAURUS K310/K320w

QUICK START  
GUIDE  
—  
用户指南

六折页 含保修卡

尺寸: 68X125(h)mm

