

## About the 2106

## More Information

### Specifications

Physical Dimensions 14.66 cm x 9.32 cm x 3.53 cm  
(5.77 in x 3.67 in x 1.39 in)

Weight 205 g (0.45 lb)

Operating Temperature 0°C to +40°C  
(+32°F to +104°F)

Electrical rating ~100 to 240V  
1.0 to 0.5A  
50 to 60 Hz

For more information on using the 2106, please see:

- 21XX Universal Access Point Technical Reference Manual (Part No. 067150)
- Intermec Web Site at [www.intermec.com](http://www.intermec.com)

Part No. 072215-001



\*072215-001\*

**Intermec**  
Technologies Corporation

6001 36th Avenue West  
Everett, WA 98203-9280

© 2001 Intermec Technologies Corp.  
All Rights Reserved

## Safety First

**Intermec**

## Quick Start Guide

072215-001



**MobileLAN™ access 2106**

**CAUTION**



**Caution**  
You must use the appropriate Intermec power supply with this device or equipment damage may occur.

**Conseil**

Vous devez utiliser la source d'alimentation Intermec adéquate avec cet appareil sinon vous risquez d'endommager l'équipement.

**Caution**

Gouvernement regulatory agencies mandate that the antenna not be alterable. Therefore, the access point uses a custom antenna connector. Do not attempt to use a different antenna or you may damage the connector and the access point.

**Conseil**

Les agences responsables de la réglementation gouvernementale exigent que l'antenne ne soit pas modifiable. Par conséquent, le point d'accès est doté d'un connecteur d'antenne personnalisé. Ne pas essayer d'utiliser une antenne différente au risque d'endommager le connecteur et le point d'accès.

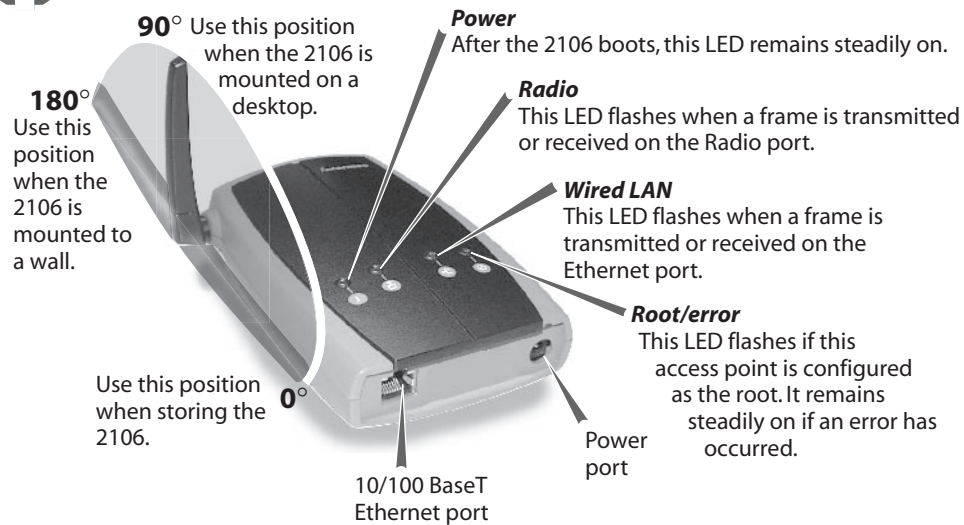
**CAUTION**



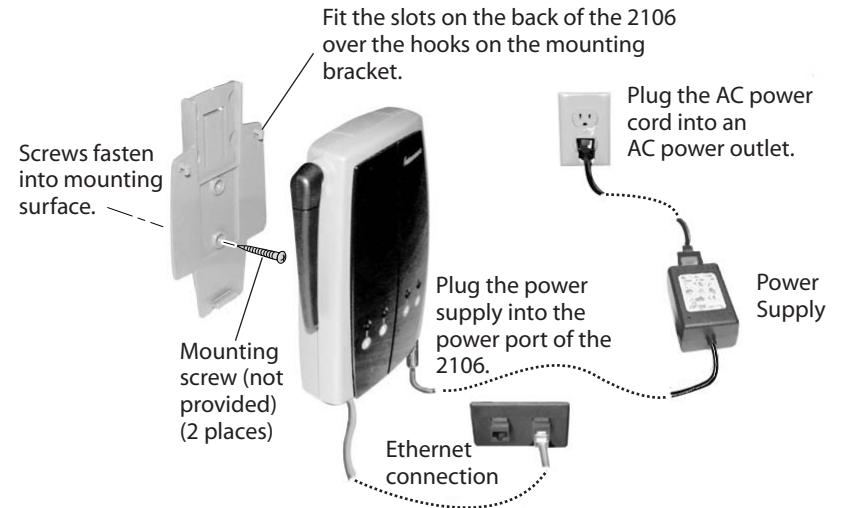
Your 2106 has been certified with an IEEE 802.11a radio.

Intermec's 2106 access point is a wireless local area network (LAN) product that lets your wireless end devices roam anywhere throughout an enterprise while maintaining a continuous, high-quality network connection.

## 1 Defining the LEDs, Ports, and Antenna Positions



## 2 Connecting, Mounting, and Applying Power to the 2106



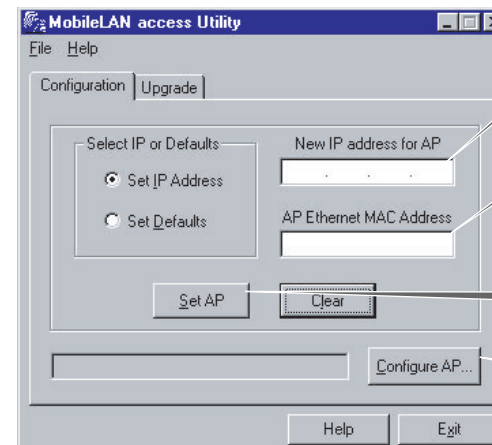
## 3 Setting an Initial IP Address

1. Install the MobileLAN access Utility by clicking Install Software from the enclosed CD and following the instructions that appear on your screen. You can also install the software from [www.mobilelan.intermec.com](http://www.mobilelan.intermec.com).
2. Reboot the access point and configure parameters A through C in the MobileLAN access Utility main screen.



**Note:** You must configure parameters A through C within 60 seconds after the access point has started. In addition, if the access point you are setting is connected wirelessly, you must have an active radio connection.

Your PC must also be on the same Ethernet segment and subnet as the access point.



**A** Enter the IP address of the access point.

**B** Enter the MAC address of the access point (located on the bottom of the access point).

**C** Click Set AP.

Click Configure AP to use the Web browser interface to continue configuring the access point.

### Congratulations!

Your 2106 is now ready to begin transmitting data packets between your end devices and your wired network.