

Measurement Report for Custom Band, FRONT, MIMO

Exposure Conditions

Band	Custom Band	TSL Permittivity	40.3
Frequency [MHz] Channel Number	915.5 915500	TSL Conductivity [S/m]	0.93
Group UID	CW 0--	Phantom Section TSL	Flat HSL
Conversion Factor	9.64	Test Distance [mm]	0.00
Communication Configuration	CW		

Hardware Setup

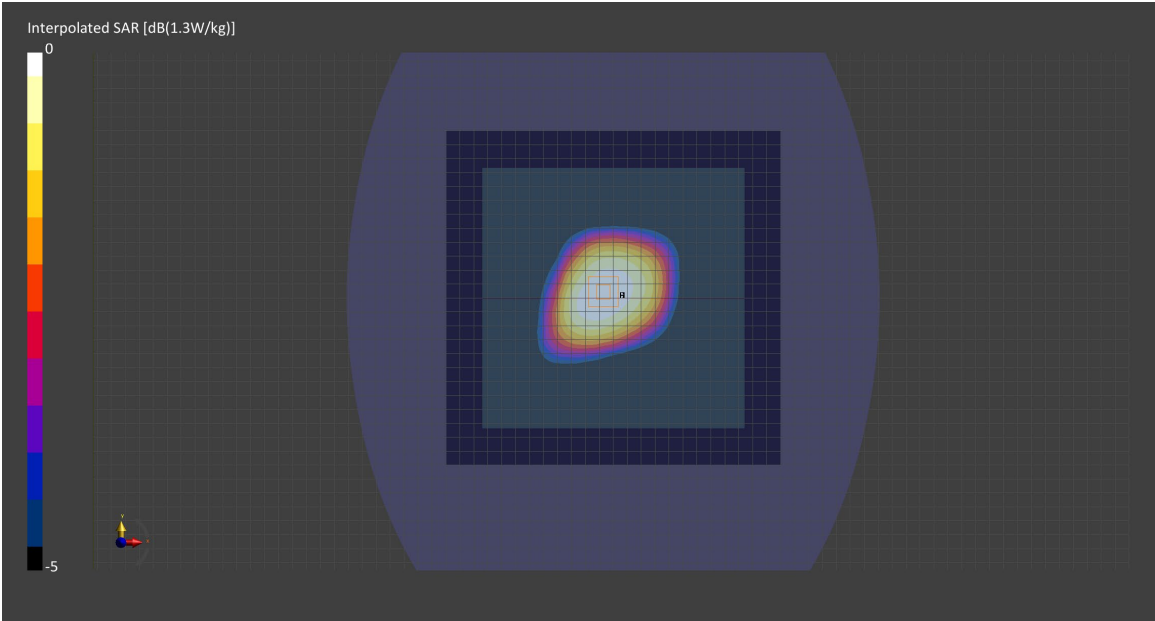
Probe Calibration Date	EX3DV4 - SN7711 2024-03-15	Phantom	ELI V8.0 (20deg probe tilt) - SN2160
DAE Calibration Date	DAE4 Sn1716 2024-03-13	TSL	HBBL600-10000V6

Scans Setup

	Area Scan	Zoom Scan
Grid Extents [mm]	240.0 x 240.0	30.0 x 30.0 x 30.0
Grid Steps [mm]	15.0 x 15.0	6.0 x 6.0 x 1.5
Sensor Surface [mm]	3.0	1.4
Graded Grid	Yes	Yes
M2/M1 [%]		91.5
Dist 3dB Peak [mm]		> 15.0

Measurement Results

	Area Scan	Zoom Scan
psSAR1g [W/Kg]	0.965	1.00
psSAR10g [W/Kg]	0.679	0.774
Power Drift [dB]	0.00	-0.00



Measurement Report for ISM 2.4 GHz Band, FRONT, MIMO

Exposure Conditions

Band	ISM 2.4 GHz Band	TSL Permittivity	37.8
Frequency [MHz] Channel Number	2440.0 19	TSL Conductivity [S/m]	1.76
Group UID	Bluetooth 10670-AAA	Phantom Section TSL	Flat HSL
Conversion Factor	8.28	Test Distance [mm]	0.00
Communication Configuration	Bluetooth Low Energy		

Hardware Setup

Probe Calibration Date	EX3DV4 - SN7711 2024-03-15	Phantom	ELI V8.0 (20deg probe tilt) - SN2160
DAE Calibration Date	DAE4 Sn1716 2024-03-13	TSL	HBBL600-10000V6

Scans Setup

	Area Scan	Zoom Scan
Grid Extents [mm]	220.0 x 220.0	30.0 x 30.0 x 30.0
Grid Steps [mm]	10.0 x 10.0	5.0 x 5.0 x 1.5
Sensor Surface [mm]	3.0	1.4
Graded Grid	Yes	Yes
M2/M1 [%]		84.1
Dist 3dB Peak [mm]		14.9

Measurement Results

	Area Scan	Zoom Scan
psSAR1g [W/Kg]	1.73	1.76
psSAR10g [W/Kg]	0.927	0.978
Power Drift [dB]	0.01	0.00

