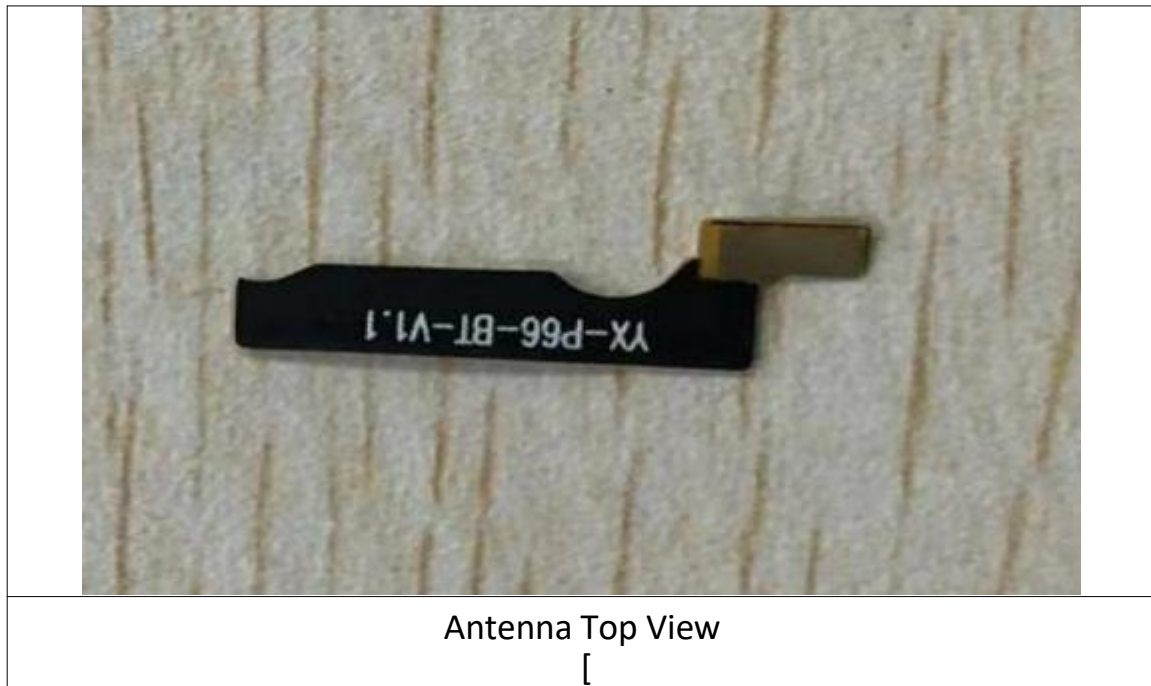
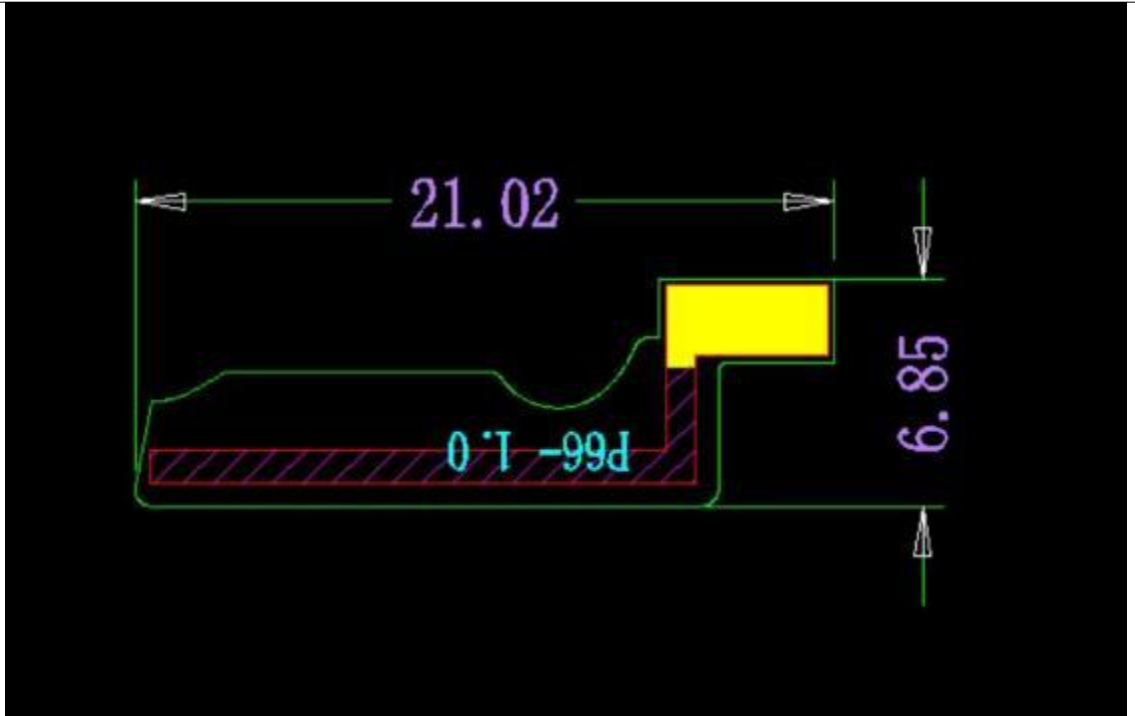


## Antenna Information

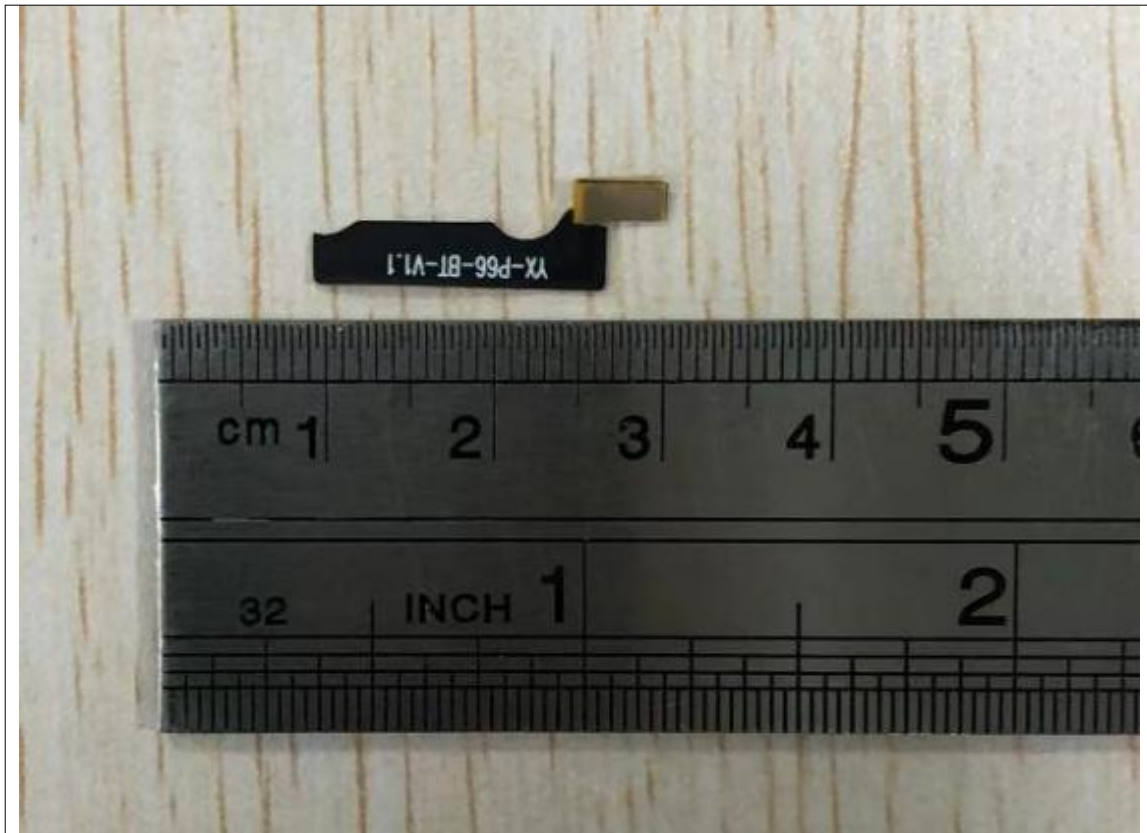
|                           |  |
|---------------------------|--|
| Manufacturer              | <b>Shenzhen Panlong Communication Technology Co., Ltd.</b>   |
| Antenna Type              | Onboard antenna  |
| Antenna Model             | FPC antenna  |
| Antenna Part Number       | 3.30.P66.001   |
| Antenna Frequency Range   | 2400-2500MHz   |
| Manufacturer Address      | 201, 2nd Floor, Baisifu Maker, No. 8 North Second Lane, Shiyan Liguang Water Plant, Bao'an District, Shenzhen City |
| Antenna Peak Gain         | -1.56dBi   |
| Antenna Dimension (LxHxW) | 21.02*6.85mm   |

## Antenna Photo





With Ruler]



Antenna Bottom View [With Ruler]

#### Antenna Pattern/Gain Measurement data/Table:

| Frequency                 | 2.4GHz | 2.42GHz | 2.44GHz | 2.45GHz | 2.46GHz | 2.48GHz | 2.5GHz |
|---------------------------|--------|---------|---------|---------|---------|---------|--------|
| Ant. Port Inp. Pow. (dBi) | 0      | 0       | 0       | 0       | 0       | 0       | 0      |
| Rad. Pow. (dBi)           | -6.13  | -5.54   | -6.02   | -6.17   | -6.41   | -7.02   | -7.79  |
| Rad. Pow. 0-90 (dBi)      | -8.91  | -8.12   | -8.44   | -8.51   | -8.66   | -9.1    | -9.76  |
| Rad. Pow. 90-180 (dBi)    | -9     | -8.66   | -9.32   | -9.57   | -9.91   | -10.76  | -11.74 |
| Peak EIRP (dBi)           | -2.12  | -1.56   | -2.13   | -2.21   | -2.4    | -2.92   | -3.76  |
| Directivity (dBi)         | 4.01   | 3.98    | 3.89    | 3.96    | 4.01    | 4.1     | 4.03   |
| Efficiency (dB)           | -6.13  | -5.54   | -6.02   | -6.17   | -6.41   | -7.02   | -7.79  |
| Efficiency (%)            | 24.38  | 27.93   | 25      | 24.15   | 22.86   | 19.86   | 16.63  |
| Gain (dBi)                | -2.12  | -1.56   | -2.13   | -2.21   | -2.4    | -2.92   | -3.76  |

