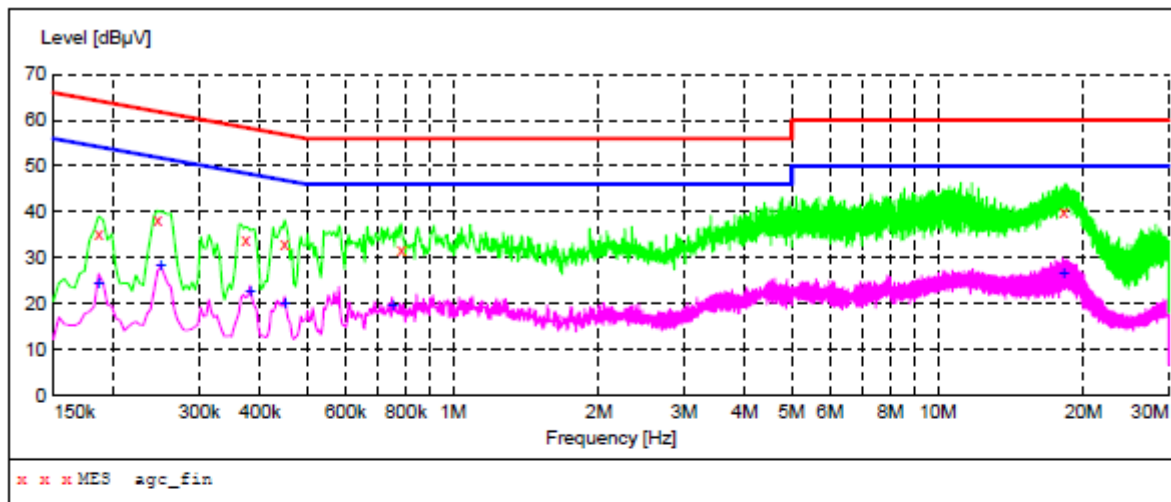


Line Conducted Emission Test Line 2-N


MEASUREMENT RESULT: "agc_fin"

2020/6/3 15:02

Frequency MHz	Level dBuV	Transd dB	Limit dBuV	Margin dB	Detector	Line	PE
0.186000	35.30	10.3	64	28.9	QP	N	GND
0.246000	38.10	10.3	62	23.8	QP	N	GND
0.374000	34.00	10.3	58	24.4	QP	N	GND
0.450000	33.20	10.3	57	23.7	QP	N	GND
0.782000	31.60	10.3	56	24.4	QP	N	GND
18.170000	40.20	12.2	60	19.8	QP	N	GND

MEASUREMENT RESULT: "agc_fin2"

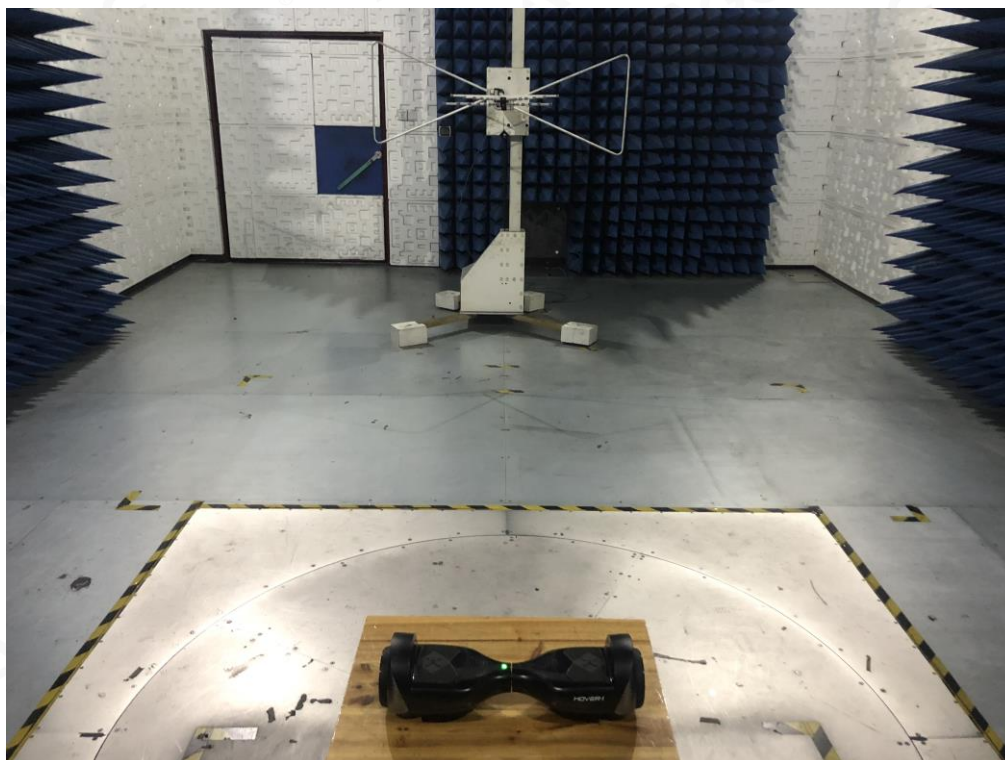
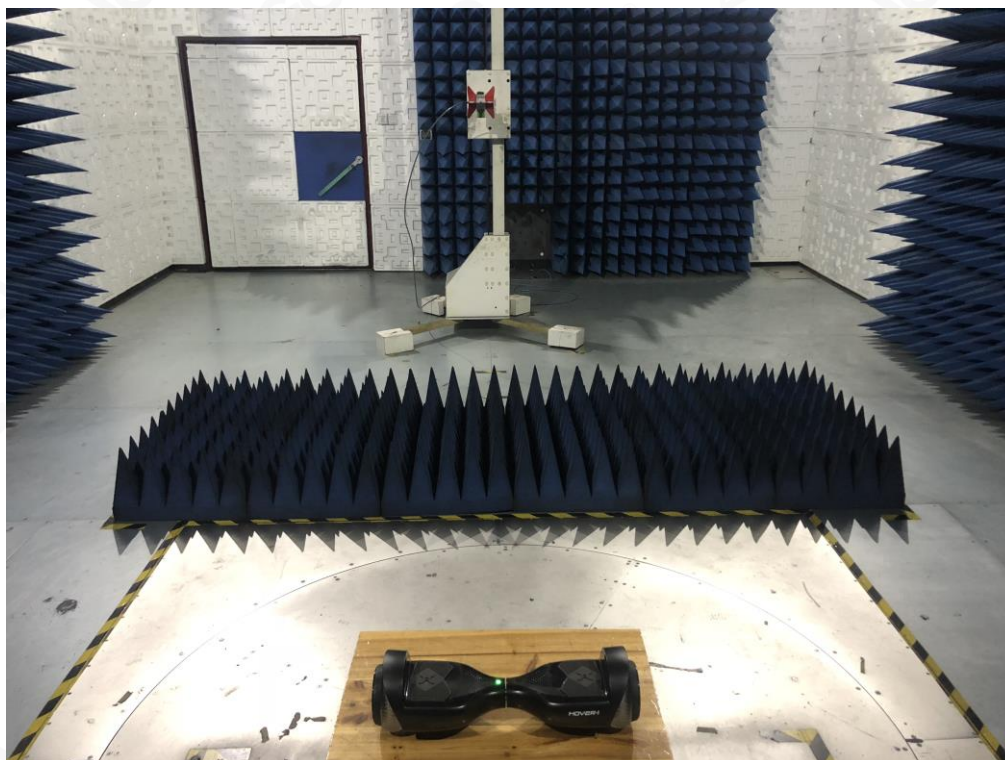
2020/6/3 15:02

Frequency MHz	Level dBuV	Transd dB	Limit dBuV	Margin dB	Detector	Line	PE
0.186000	24.20	10.3	54	30.0	AV	N	GND
0.250000	28.00	10.3	52	23.8	AV	N	GND
0.382000	22.60	10.3	48	25.6	AV	N	GND
0.450000	20.00	10.3	47	26.9	AV	N	GND
0.750000	19.40	10.3	46	26.6	AV	N	GND
18.170000	26.30	12.2	50	23.7	AV	N	GND

RESULT: PASS

Note: All the test modes had been tested, the mode 1 was the worst case. Only the data of the worst case would be record in this test report.



APPENDIX A: PHOTOGRAPHS OF TEST SETUP
RADIATED EMISSION TEST SETUP BELOW 1GHZ**RADIATED EMISSION TEST SETUP ABOVE 1GHZ**

CONDUCTED EMISSION TEST SETUP



APPENDIX B: PHOTOGRAPHS OF EUT

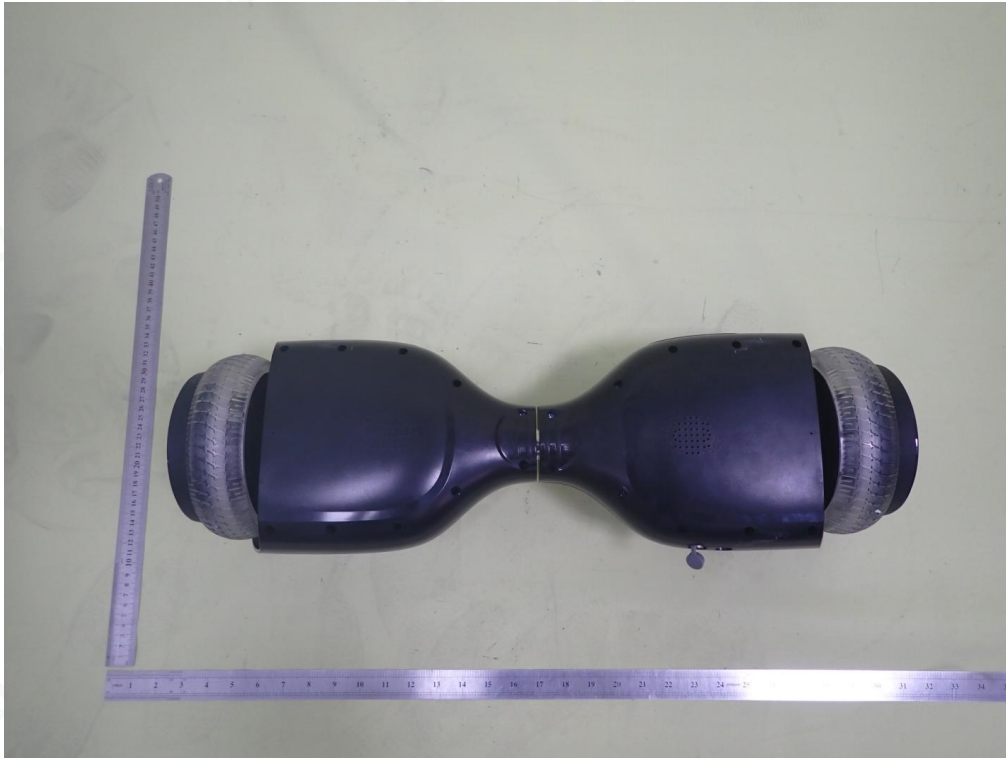
ALL VIEW OF EUT



TOP VIEW OF EUT



BOTTOM VIEW OF EUT



FRONT VIEW OF EUT



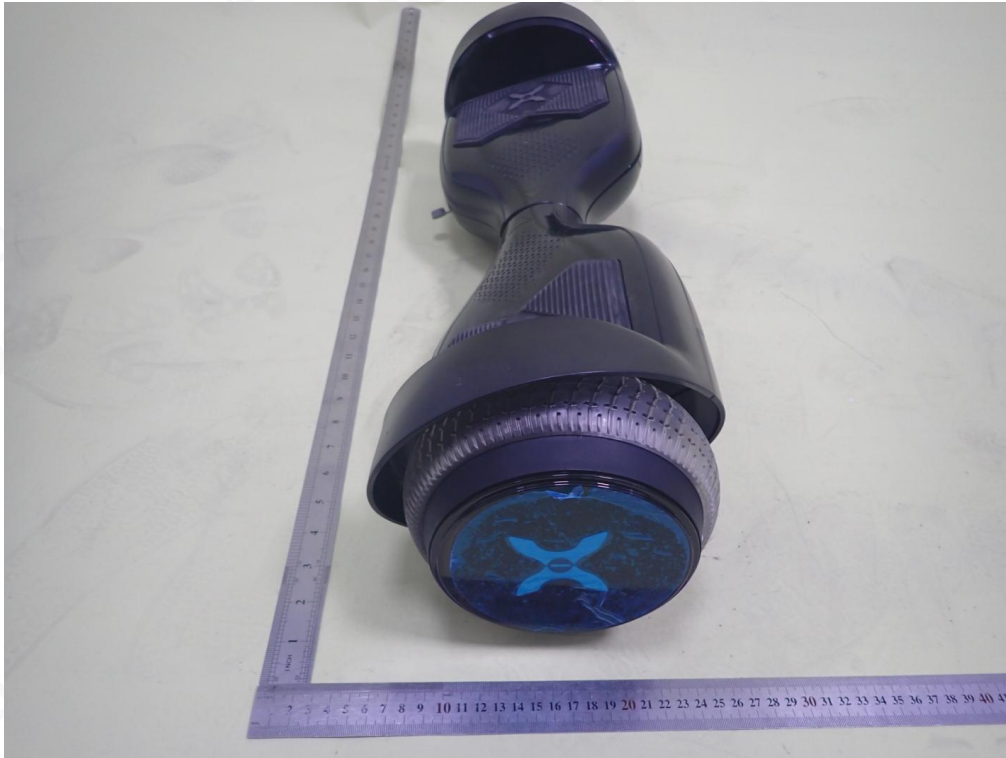
BACK VIEW OF EUT



LEFT VIEW OF EUT



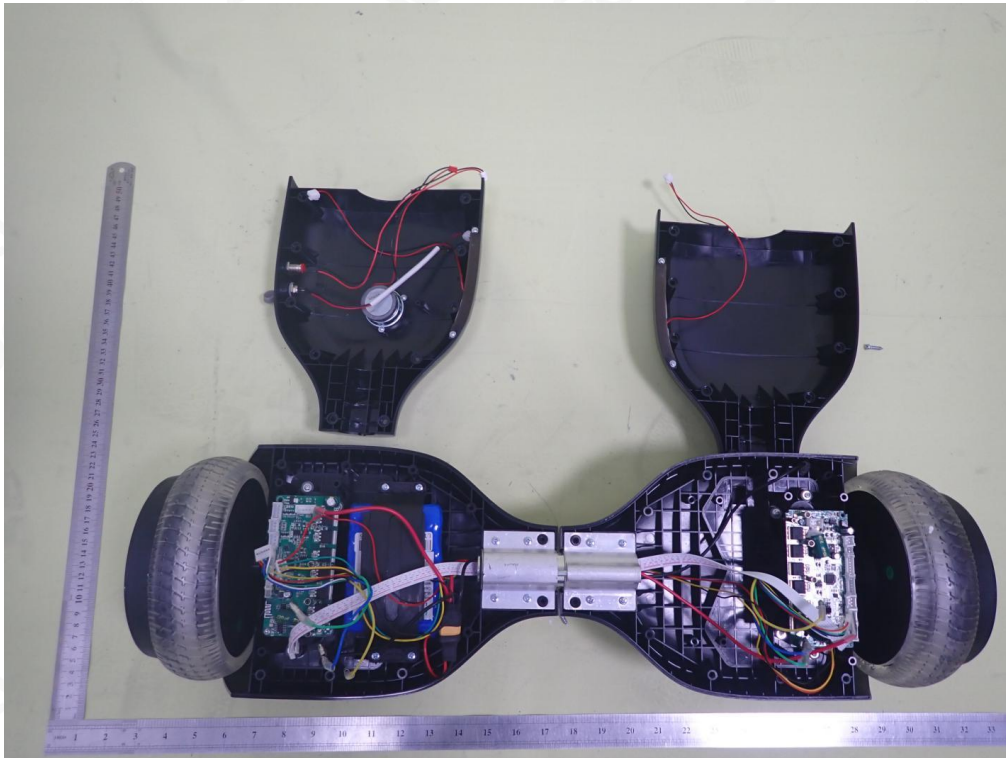
RIGHT VIEW OF EUT



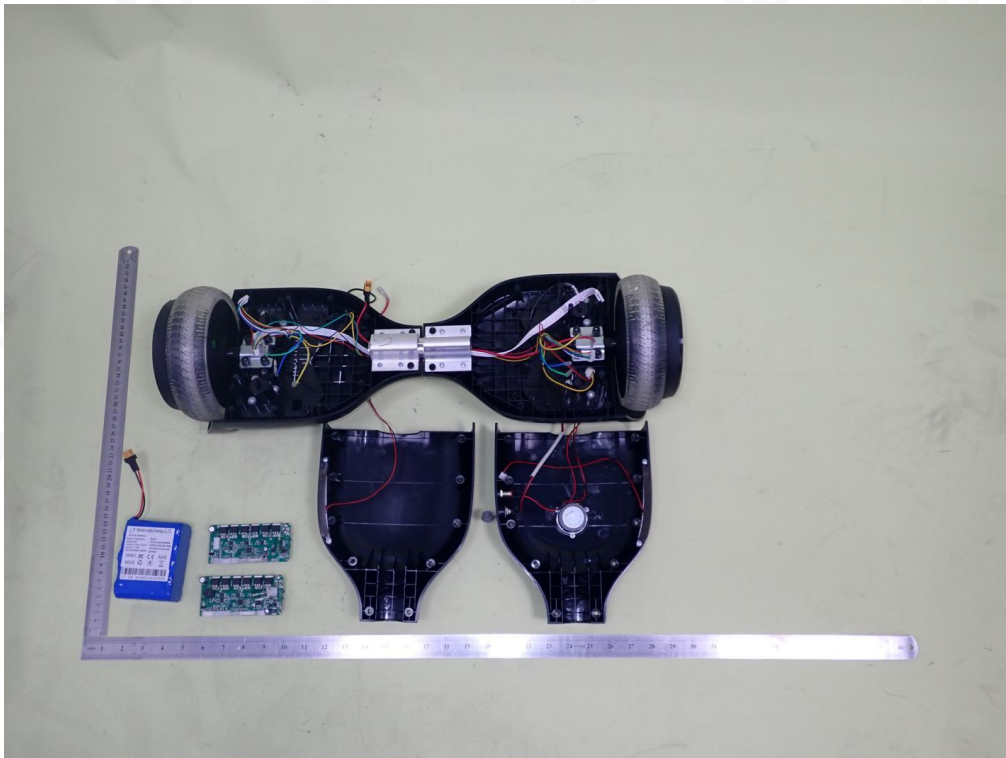
VIEW OF EUT(PORT)



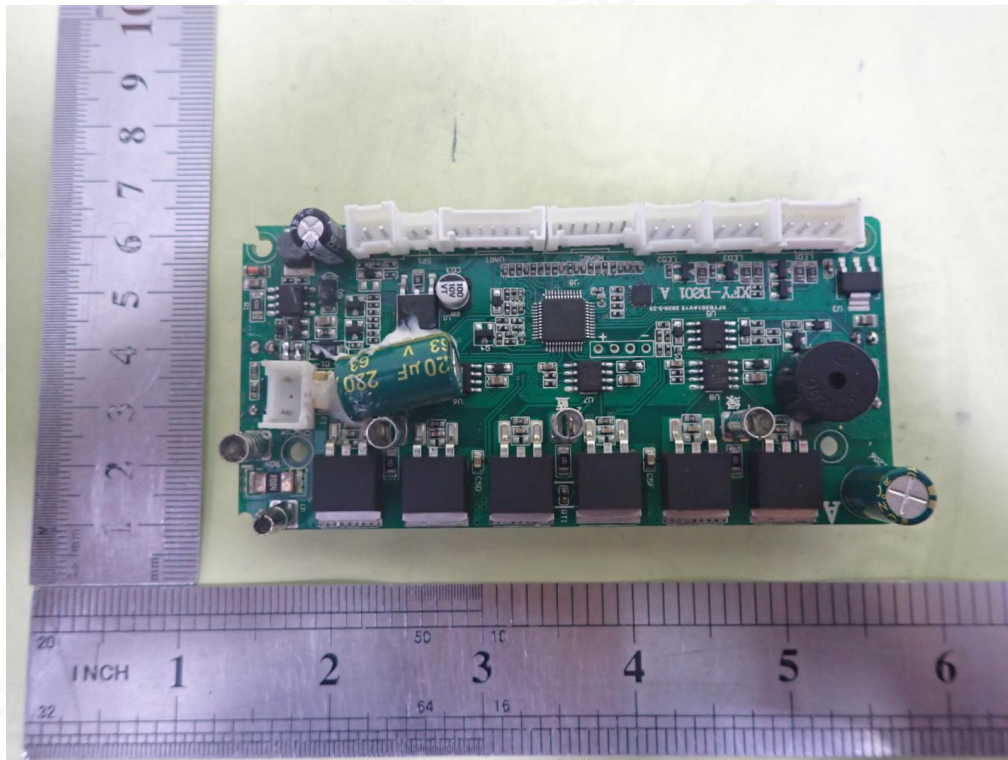
OPEN VIEW-1 OF EUT



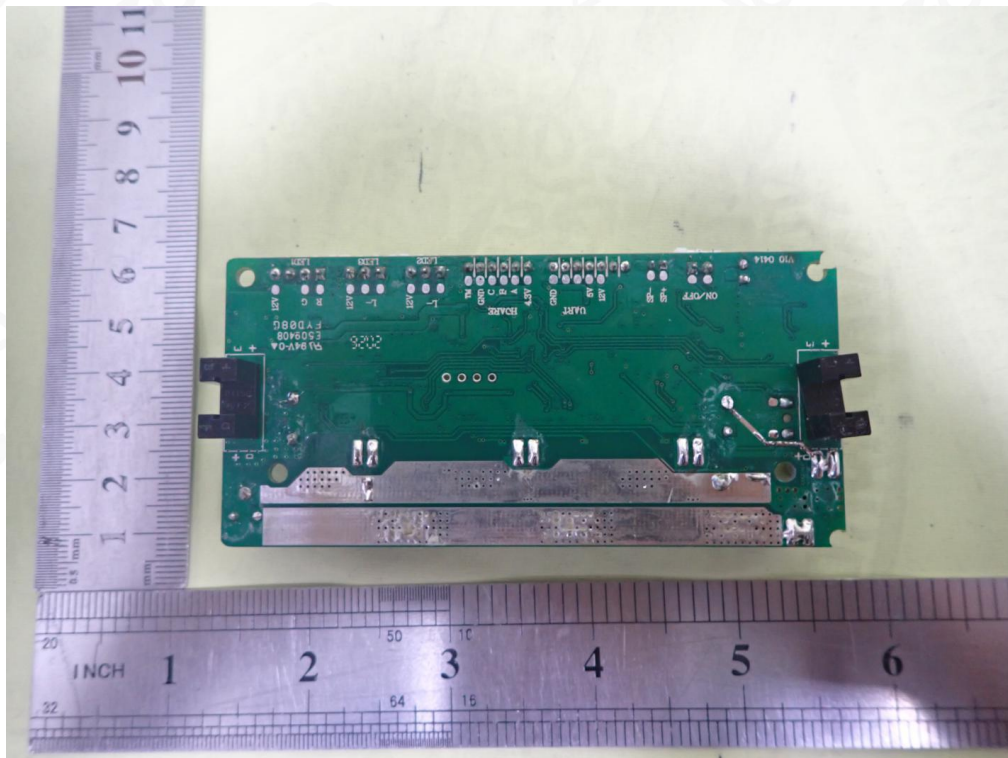
OPEN VIEW-2 OF EUT



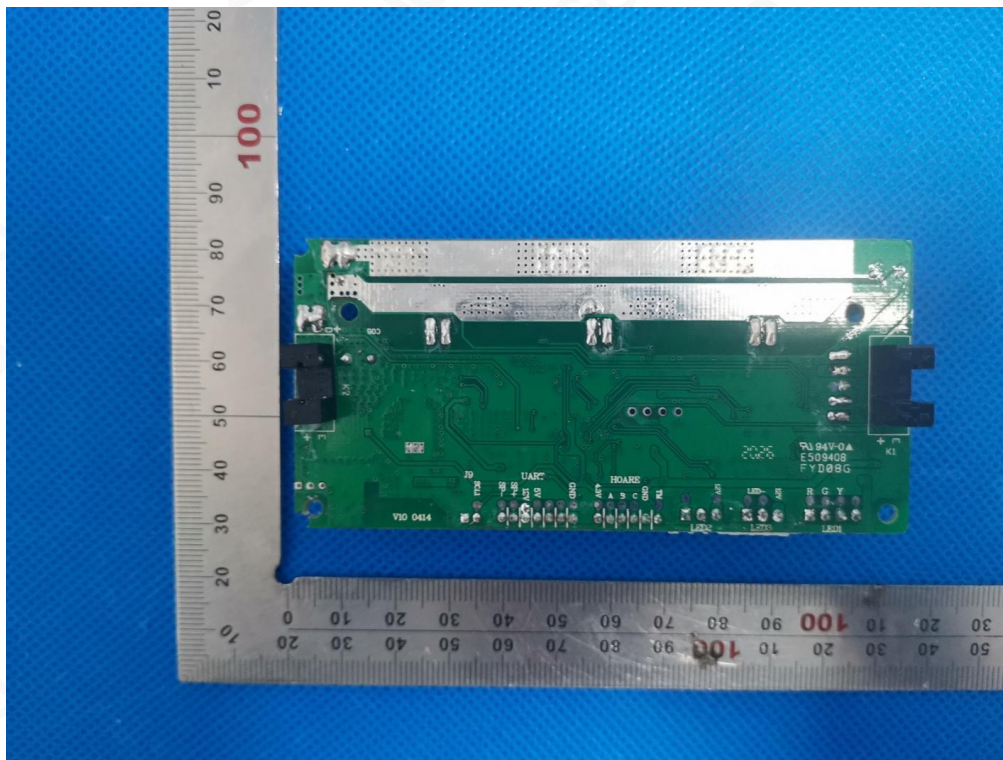
INTERNAL VIEW-1 OF EUT



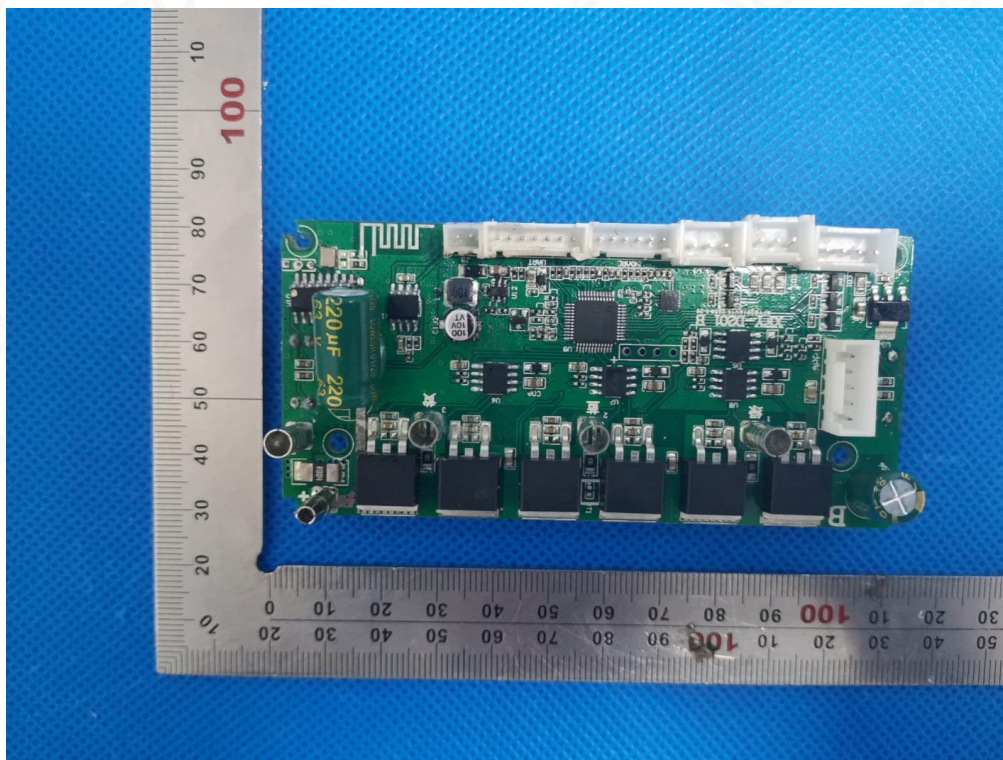
INTERNAL VIEW-2 OF EUT



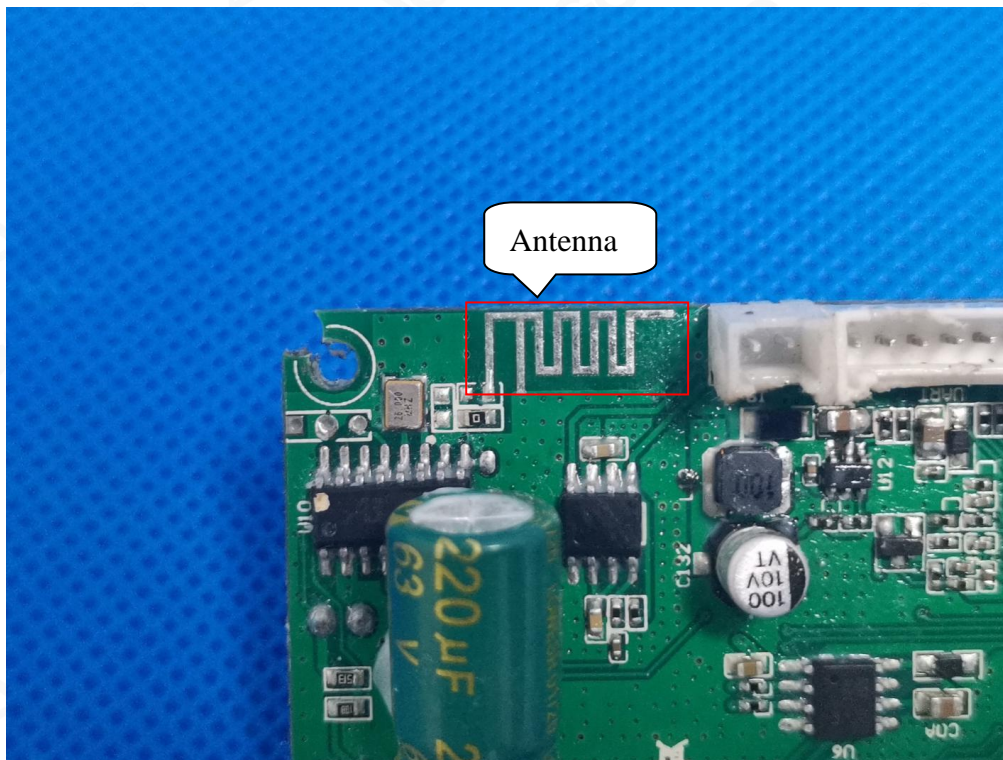
INTERNAL VIEW-3 OF EUT



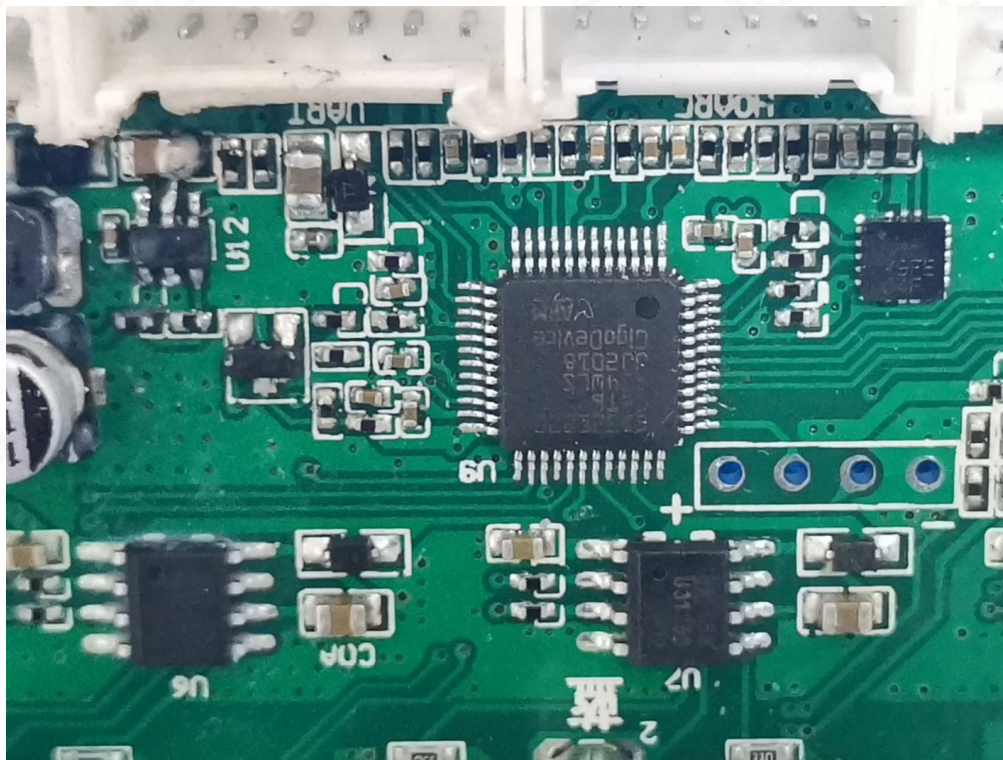
INTERNAL VIEW-4 OF EUT



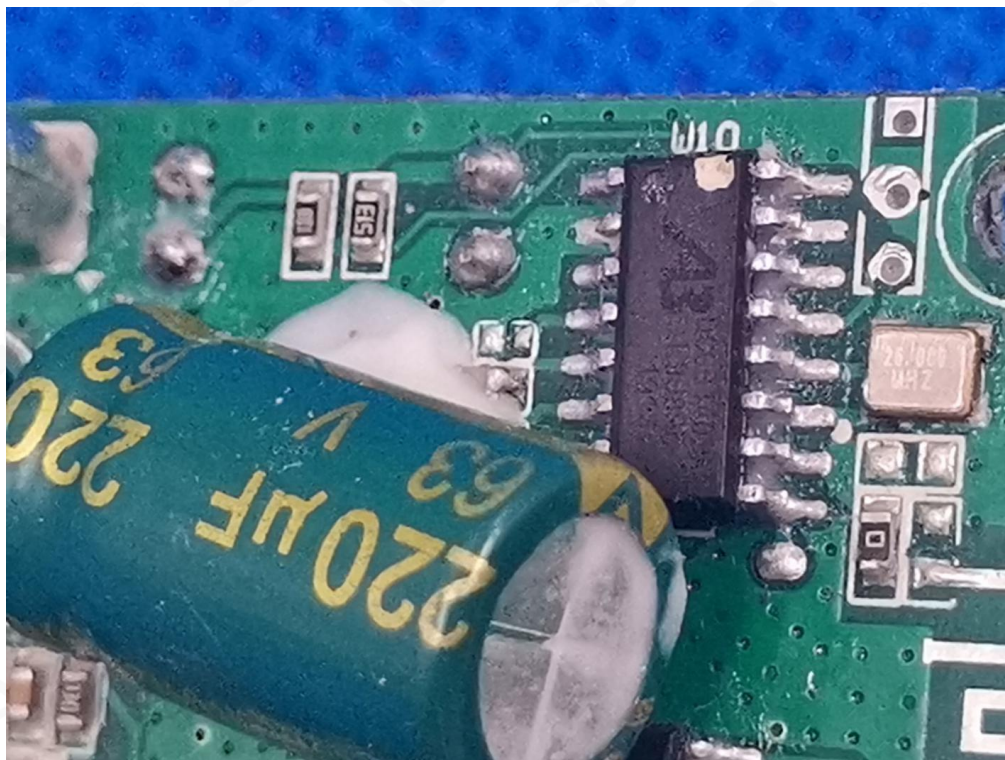
INTERNAL VIEW-5 OF EUT



INTERNAL VIEW-6 OF EUT



INTERNAL VIEW-7 OF EUT



VIEW OF BATTERY



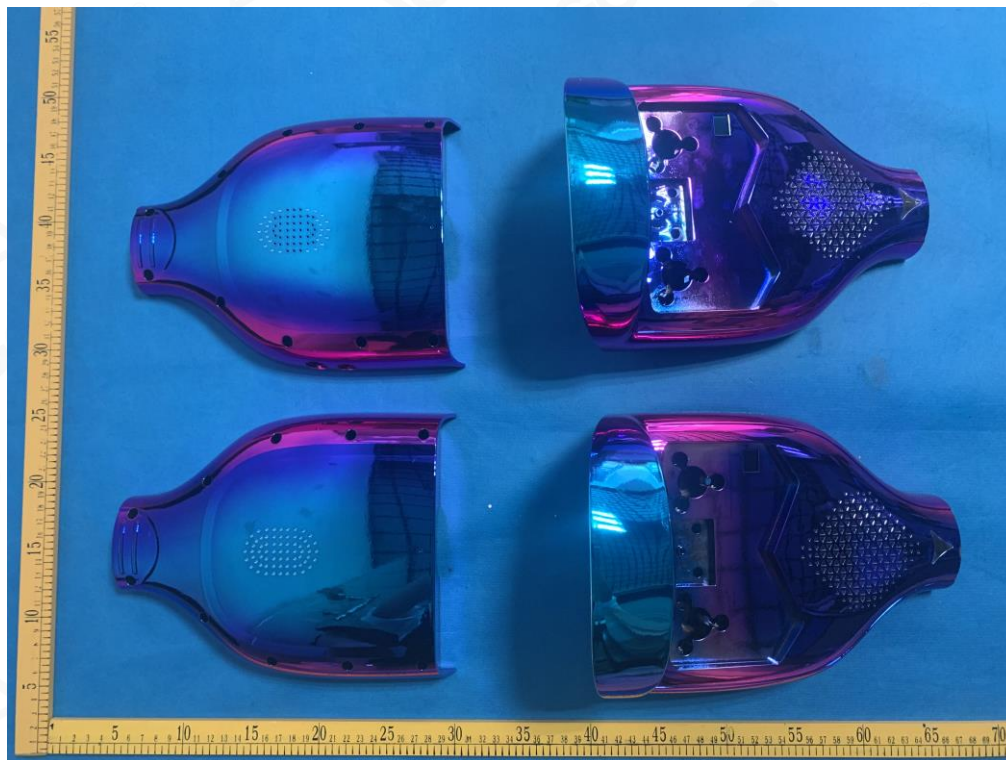
VIEW OF ADAPTER



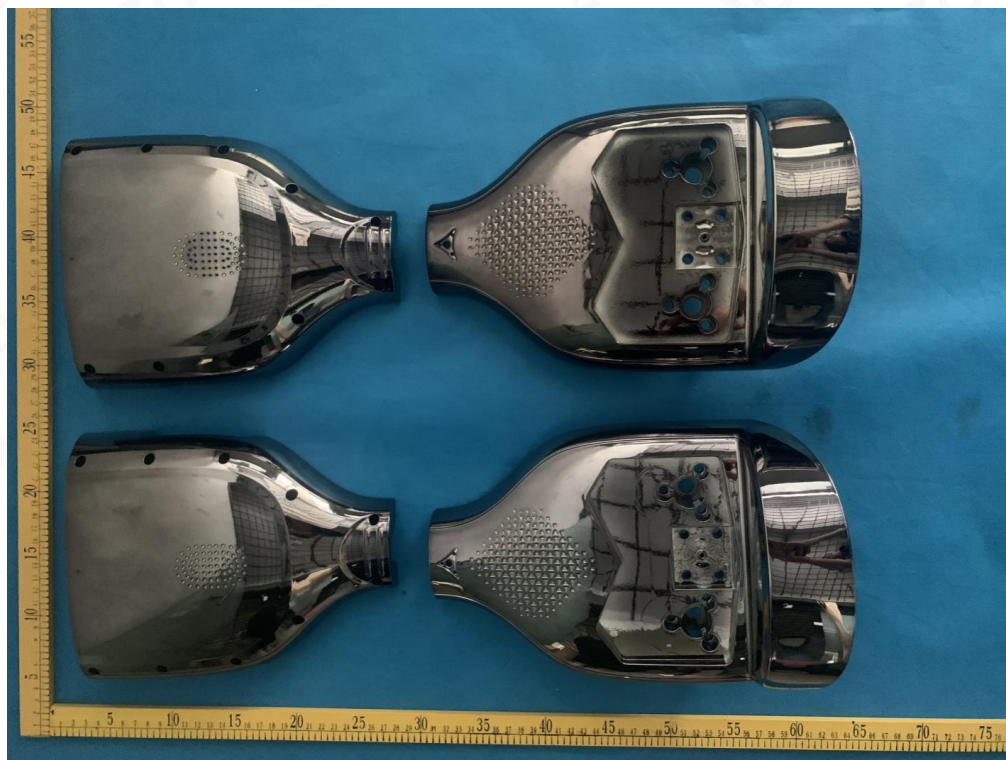
VIEW OF SHELL-1



VIEW OF SHELL-2



VIEW OF SHELL-3



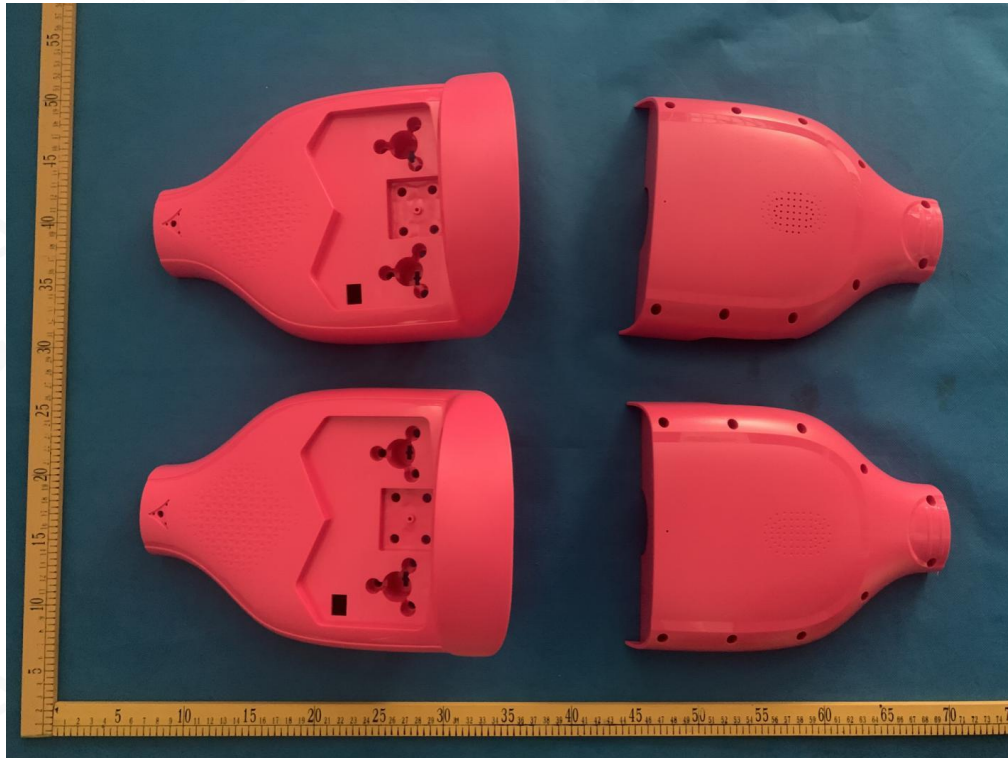
VIEW OF SHELL-4



VIEW OF SHELL-5



VIEW OF SHELL-6



----END OF REPORT----