



**Shenzhen CTA Testing Technology Co., Ltd.**  
Room 106, Building 1, Yibaolai Industrial Park, Qiaotou Community,  
Fuhai Street, Bao'an District, Shenzhen, China

## FCC PART 15 SUBPART CTEST REPORT

### FCC PART 15.247

**Report Reference No.**.....: **CTA24061302001**

**FCC ID** .....: **2AG7C-GO1T2-C6**

Compiled by

( position+printed name+signature)..: File administrators Jinghua  
Xiao

Jinghua Xiao

Supervised by

( position+printed name+signature)..: Test Engineer Lushan Kong

Lushan Kong

Approved by

( position+printed name+signature)..: Manager Eric Wang



Wang

Date of issue.....: Jun.21, 2024

**Representative Laboratory Name.:** **Shenzhen CTA Testing Technology Co., Ltd.**

Address.....: Room 106, Building 1, Yibaolai Industrial Park, Qiaotou  
Community, Fuhai Street, Bao.,an District, Shenzhen, China

**Applicant's name**.....: **Hangzhou Meari Technology Co., Ltd.**

Address.....: Room 604-605, Building 1, No.768 Jianghong Road, Changhe Street,  
Binjiang District, Hangzhou, Zhejiang, China

**Test specification**.....:

Standard.....: **FCC Part 15.247**

TRF Originator.....: Shenzhen CTA Testing Technology Co., Ltd.

Master TRF.....: Dated 2014-12

**Shenzhen CTA Testing Technology Co., Ltd. All rights reserved.**

This publication may be reproduced in whole or in part for non-commercial purposes as long as the Shenzhen CTA Testing Technology Co., Ltd. is acknowledged as copyright owner and source of the material. Shenzhen CTA Testing Technology Co., Ltd. takes no responsibility for and will not assume liability for damages resulting from the reader's interpretation of the reproduced material due to its placement and context.

**Test item description**.....: **IP CAMERA**

Trade Mark.....: N/A

Manufacturer.....: Hangzhou Meari Technology Co., Ltd.

Model/Type reference.....: W2

Listed Models .....: W2T,W2F,W2 Kit1,W2 Kit2,W1,W1T,W1F,W1 Kit1,W1 Kit2,  
GO1,GO1T,GO1F,GO1 Kit1,GO1 Kit2,Snap 8S,Snap 8T,Snap  
8F,Snap 18S,Snap 18T,Snap 18F

Modulation Type.....: GFSK

Operation Frequency.....: From 2402MHz to 2480MHz

Hardware Version .....: SNAP18T-T22MB-MIS5-REV1\_0

Software Version.....: N/A

Rating.....: DC 3.6V&3.7V by Battery  
Recharged by DC 5.0V

Result.....: **PASS**

**TEST REPORT**

|   |               |
|---|---------------|
| <b>Test Report No. :</b> CTA24061302001 | Jun.21, 2024  |
|   | Date of issue |

Equipment under Test : IP CAMERA

Model /Type : W2

Listed model : W2T,W2F,W2 Kit1,W2 Kit2,W1,W1T,W1F,W1 Kit1,W1 Kit2,  
GO1,GO1T,GO1F,GO1 Kit1,GO1 Kit2,Snap 8S,Snap 8T,Snap  
8F,Snap 18S,Snap 18T,Snap 18F

**Applicant** : **Hangzhou Meari Technology Co., Ltd.**

Address : Room 604-605, Building 1, No.768 Jianghong Road, Changhe Street,  
Binjiang District, Hangzhou, Zhejiang, China

**Manufacturer** : **Hangzhou Meari Technology Co., Ltd.**

Address : 4F of Building 1 and 2-4F of Building 2, No. 91 Chutian Road, Xixing  
Street, Binjiang District, Hangzhou, Zhejiang, China

|                     |             |
|---------------------|-------------|
| <b>Test Result:</b> | <b>PASS</b> |
|---------------------|-------------|

The test report merely corresponds to the test sample.

It is not permitted to copy extracts of these test result without the written permission of the test laboratory.

## Contents

|   |           |
|---|-----------|
| <b>1. TEST STANDARDS .....</b>  | <b>4</b>  |
| <b>2. SUMMARY .....</b>   | <b>5</b>  |
| 2.1. General Remarks .....  | 5         |
| 2.2. Product Description .....  | 5         |
| 2.3. Equipment Under Test .....   | 6         |
| 2.4. Short description of the Equipment under Test (EUT) .....                  | 6         |
| 2.5. EUT operation mode .....   | 6         |
| 2.6. Block Diagram of Test Setup .....  | 7         |
| 2.7. EUT Exercise Software .....  | 7         |
| 2.8. Special Accessories .....  | 7         |
| 2.9. External I/O Cable .....   | 7         |
| 2.10. Related Submittal(s) / Grant (s) .....                                    | 7         |
| 2.11. Modifications .....   | 7         |
| <b>3. TEST ENVIRONMENT .....</b>  | <b>8</b>  |
| 3.1. Address of the test laboratory .....                                       | 8         |
| 3.2. Test Facility .....  | 8         |
| 3.3. Environmental conditions .....   | 8         |
| 3.4. Statement of the measurement uncertainty .....                             | 8         |
| 3.5. Test Description .....   | 9         |
| 3.6. Equipments Used during the Test .....                                      | 10        |
| <b>4. TEST CONDITIONS AND RESULTS .....</b>                                     | <b>11</b> |
| 4.1. AC Power Conducted Emission .....  | 11        |
| 4.2. Radiated Emission .....  | 14        |
| 4.3. On Time and Duty Cycle .....   | 25        |
| 4.4. Maximum Peak Output Power .....  | 26        |
| 4.5. Power Spectral Density .....   | 27        |
| 4.6. 99% and 6dB Bandwidth .....  | 28        |
| 4.7. Conducted Spurious Emissions and Band Edge Compliance of RF Emission ..... | 29        |
| 4.8. Antenna Requirement .....  | 31        |
| <b>5. TEST SETUP PHOTOS OF THE EUT .....</b>                                    | <b>32</b> |
| <b>6. EXTERNAL AND INTERNAL PHOTOS OF THE EUT .....</b>                         | <b>35</b> |

## **1. TEST STANDARDS**

The tests were performed according to following standards:

[FCC Rules Part 15.247](#): Frequency Hopping, Direct Spread Spectrum and Hybrid Systems that are in operation within the bands of 902-928 MHz, 2400-2483.5 MHz, and 5725-5850 MHz.

[ANSI C63.10-2020](#): American National Standard for Testing Unlicensed Wireless Devices

[KDB 558074 D01 DTS Meas Guidance v05r02](#): Guidance for Performing Compliance Measurements on Digital Transmission Systems (DTS) Operating Under §15.247.

## 2. SUMMARY

### 2.1. General Remarks

|                                |   |              |
|--------------------------------|---|--------------|
| Date of receipt of test sample | : | May.30, 2024 |
|                                | : |              |
| Testing commenced on           | : | May.30, 2024 |
|                                | : |              |
| Testing concluded on           | : | Jun.12, 2024 |

### 2.2. Product Description

|                      |  |
|----------------------|--|
| Product Name         | IP CAMERA  |
| Trade Mark           | N/A  |
| Model/Type reference | W2   |
| Listed Models        | W2T,W2F,W2 Kit1,W2 Kit2,W1,W1T,W1F,W1 Kit1,W1 Kit2,<br>GO1,GO1T,GO1F,GO1 Kit1,GO1 Kit2,Snap 8S,Snap 8T,Snap 8F,Snap<br>18S,Snap 18T,Snap 18F |
| Model Declaration    | PCB board, structure and internal of these model(s) are the same, Only the<br>model name different , So no additional models were tested.    |
| Power supply:        | DC 3.6V&3.7V by Battery<br>Recharged by DC 5.0V  |
| Sample ID            | CTA24061302001-1#& CTA24061302001-2#   |
| Bluetooth            |  |
| Operation frequency  | 2402-2480MHz   |
| Channel Number       | 40 channels for Bluetooth (DTS)  |
| Channel Spacing      | 2MHz for Bluetooth (DTS)   |
| Modulation Type      | GFSK for Bluetooth (DTS)   |
| WIFI(2.4G Band)      |  |
| Frequency Range      | 2412MHz ~ 2462MHz  |
| Channel Spacing      | 5MHz   |
| Channel Number       | 11 Channel for 20MHz bandwidth(2412~2462MHz)<br>7 Channel for 40MHz bandwidth(2422~2452MHz)  |
| Modulation Type      | 802.11b: DSSS; 802.11g/n: OFDM; 802.11ax: OFDMA  |
| Antenna Description  | Metal Antenna, 2.93dBi(Max.) for 2.4G Band   |

### 2.3. Equipment Under Test

#### Power supply system utilised

|                      |   |   |                                 |
|----------------------|---|---|---------------------------------|
| Power supply voltage | : | <input type="radio"/> 230V/ 50 Hz                                 | <input type="radio"/> 120V/60Hz |
|                      |   | <input type="radio"/> 12 V DC                                     | <input type="radio"/> 24 V DC   |
|                      |   | <input checked="" type="radio"/> Other (specified in blank below) |                                 |

DC 5.0V

### 2.4. Short description of the Equipment under Test (EUT)

This is a IP CAMERA .

For more details, refer to the user's manual of the EUT.

### 2.5. EUT operation mode

The Applicant provides communication tools software to control the EUT for staying in continuous transmitting (Duty Cycle more than 98%) and receiving mode for testing .There are 40 channels provided to the EUT.

Channel 00/19/39 was selected to test.

| Mode of Operations     | Frequency Range (MHz) | Data Rate (Mbps) |
|------------------------|-----------------------|------------------|
| (BLE)                  | 2402                  | 1                |
|                        | 2440                  | 1                |
|                        | 2480                  | 1                |
| For Conducted Emission |                       |                  |
| Test Mode              |                       | TX Mode          |
| For Radiated Emission  |                       |                  |
| Test Mode              |                       | TX Mode          |

| Channel | Frequency(MHz) | Channel | Frequency(MHz) |
|---------|----------------|---------|----------------|
| 0       | 2402           | 20      | 2442           |
| 1       | 2404           | 21      | 2444           |
| 2       | 2406           | 22      | 2446           |
| --      | --             | --      | --             |
| --      | --             | --      | --             |
| 18      | 2438           | 38      | 2478           |
| 19      | 2440           | 39      | 2480           |

The EUT has been tested under operating condition.

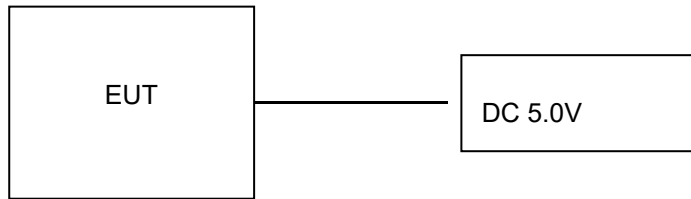
This test was performed with EUT in X, Y, Z position and the worst case was found when EUT in X position.

AC conducted emission pre-test at both at AC 120V/60Hz and AC 240V/50Hz modes, recorded worst case(AC 120V/60Hz).

Worst-case mode and channel used for 150 KHz-30 MHz power line conducted emissions was the mode and channel with the highest output power, which was determined to be BT LE mode (MCH).

Worst-case mode and channel used for 9 KHz-1000 MHz radiated emissions was the mode and channel with the highest output power, that was determined to be BT LE mode(MCH).

## 2.6. Block Diagram of Test Setup



## 2.7. EUT Exercise Software

The system was configured for testing in a continuous transmits condition and change test channels by software (IPOP order) provided by application.

## 2.8. Special Accessories

| Manufacturer                                   | Description | Model             | Serial Number | Certificate |
|--|-------------|-------------------|---------------|-------------|
| SHENZHEN TIANYIN ELECTRONICS CO.,LTD.          | Adapter     | TPA-46B050100UU   | --            | IC          |
| Zhuzhou Dachuan Electronic Technology Co.,Ltd. | Adapter     | DCT07W050100US-C1 | --            | IC          |

## 2.9. External I/O Cable

| I/O Port Description | Quantity | Cable              |
|----------------------|----------|--------------------|
| DC IN Port           | 1        | Non-Shielded, 1.0m |

## 2.10. Related Submittal(s) / Grant (s)

This submittal(s) (test report) is intended for **FCC: 2AG7C-GO1T2-C6** filing to comply with Section 15.247 of the FCC Part 15, Subpart C Rules.

## 2.11. Modifications

No modifications were implemented to meet testing criteria.

### 3. TEST ENVIRONMENT

#### 3.1. Address of the test laboratory

**Shenzhen CTA Testing Technology Co., Ltd.**

Room 106, Building 1, Yibaolai Industrial Park, Qiaotou Community, Fuhai Street, Bao'an District, Shenzhen, China.

#### 3.2. Test Facility

The test facility is recognized, certified, or accredited by the following organizations:

**FCC-Registration No.: 517856 Designation Number: CN1318**

Shenzhen CTA Testing Technology Co., Ltd. has been listed on the US Federal Communications Commission list of test facilities recognized to perform electromagnetic emissions measurements.

**A2LA-Lab Cert. No.: 6534.01**

Shenzhen CTA Testing Technology Co., Ltd. has been listed by American Association for Laboratory Accreditation to perform electromagnetic emission measurement.

The 3m-Semi anechoic test site fulfils CISPR 16-1-4 according to ANSI C63.10 and CISPR 16-1-4:2010.

#### 3.3. Environmental conditions

During the measurement the environmental conditions were within the listed ranges:

|                       |              |
|-----------------------|--------------|
| Temperature:          | 15-35 ° C    |
|                       |              |
| Humidity:             | 30-60 %      |
|                       |              |
| Atmospheric pressure: | 950-1050mbar |

#### 3.4. Statement of the measurement uncertainty

The data and results referenced in this document are true and accurate. The reader is cautioned that there may be errors within the calibration limits of the equipment and facilities. The measurement uncertainty was calculated for all measurements listed in this test report acc. to CISPR 16 - 4 „Specification for radio disturbance and immunity measuring apparatus and methods – Part 4: Uncertainty in EMC Measurements“ and is documented in the Shenzhen CTA Testing Technology Co., Ltd. quality system acc. to DIN EN ISO/IEC 17025. Furthermore, component and process variability of devices similar to that tested may result in additional deviation. The manufacturer has the sole responsibility of continued compliance of the device.

Hereafter the best measurement capability for Shenzhen CTA Testing Technology Co., Ltd. is reported:

| Test   | Range      | Measurement Uncertainty | Notes |
|--|------------|-------------------------|-------|
| Radiated Emission                                | 30~1000MHz | 4.10 dB                 | (1)   |
| Radiated Emission                                | 1~18GHz    | 4.32 dB                 | (1)   |
| Radiated Emission                                | 18-40GHz   | 5.54 dB                 | (1)   |
| Conducted Disturbance                            | 0.15~30MHz | 3.12 dB                 | (1)   |
| On Time and Duty Cycle                           | 1~18GHz    | 0.78 dB                 | (1)   |
| Maximum Conducted Output Power                   | 1~18GHz    | 0.57 dB                 | (1)   |
| Power Spectral Density                           | 1~18GHz    | 0.66 dB                 | (1)   |
| 99% and 6 dB Bandwidth                           | 1~18GHz    | 1.20 dB                 | (1)   |
| Conducted Spurious Emissions and Band Edges Test | 1~18GHz    | 1.60 dB                 | (1)   |
| Conducted at Restricted Band                     | 1~18GHz    | 1.60 dB                 | (1)   |

This uncertainty represents an expanded uncertainty expressed at approximately the 95% confidence level using a coverage factor of k=2.



### 3.5. Test Description

| Applied Standard: FCC Part 15 Subpart C |  |  |           |            |
|---|--|--|-----------|------------|
| FCC Rules                               | Description of Test                              | Test Sample                            | Result    | Remark     |
| /                                       | On Time and Duty Cycle                           | CTA24061302001-1#                      | Compliant | Appendix A |
| §15.247(b)                              | Maximum Conducted Output Power                   | CTA24061302001-1#                      | Compliant | Appendix A |
| §15.247(e)                              | Power Spectral Density                           | CTA24061302001-1#                      | Compliant | Appendix A |
| §15.247(a)(2)                           | 6dB Bandwidth                                    | CTA24061302001-1#                      | Compliant | Appendix A |
| §2.1047                                 | 99% Occupied Bandwidth                           | CTA24061302001-1#                      | Compliant | Appendix A |
| §15.209,<br>§15.247(d)                  | Conducted Spurious Emissions and Band Edges Test | CTA24061302001-1#                      | Compliant | Appendix A |
| §15.209,<br>§15.247(d)                  | Radiated Spurious Emissions                      | CTA24061302001-1#<br>CTA24061302001-2# | Compliant | Note 1     |
| §15.205                                 | Emissions at Restricted Band                     | CTA24061302001-1#                      | Compliant | Appendix A |
| §15.207(a)                              | AC Conducted Emissions                           | CTA24061302001-2#                      | Compliant | Note 1     |
| §15.203<br>§15.247(c)                   | Antenna Requirements                             | CTA24061302001-1#                      | Compliant | Note 1     |
| §15.247(i)<br>§2.1091                   | RF Exposure                                      | /                                      | Compliant | Note 2     |

Remark:

1. The measurement uncertainty is not included in the test result.
2. NA = Not Applicable; NP = Not Performed
3. Note 1 – Test results inside test report;
4. Note 2 – Test results in other test report (MPE Report).
5. We tested all test mode and recorded worst case in report

### 3.6. Equipments Used during the Test

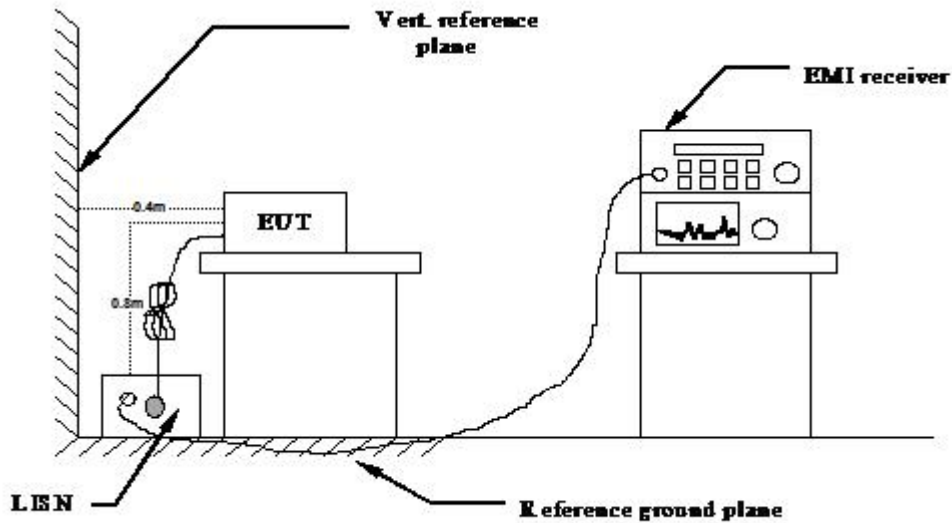
| Test Equipment             | Manufacturer                      | Model No.          | Serial No.      | Calibration Date | Calibration Due Date |
|----------------------------|-----------------------------------|--------------------|-----------------|------------------|----------------------|
| LISN                       | CYBERTEK                          | EM5040A            | E1850400105     | 2023/07/13       | 2024/07/12           |
| LISN                       | R&S                               | ESH2-Z5            | 893606/008      | 2023/07/13       | 2024/07/12           |
| EMI Test Receiver          | R&S                               | ESPI3              | 101841-cd       | 2023/07/14       | 2024/07/13           |
| EMI Test Receiver          | R&S                               | ESCI7              | 101102          | 2023/07/13       | 2024/07/12           |
| Spectrum Analyzer          | Agilent                           | N9020A             | MY48010425      | 2023/08/28       | 2024/08/27           |
| Spectrum Analyzer          | R&S                               | FSV40              | 100019          | 2023/07/13       | 2024/07/12           |
| Vector Signal generator    | Agilent                           | N5181A             | MY49060502      | 2023/07/13       | 2024/07/12           |
| Signal generator           | Agilent                           | N5182A             | 3610AO1069      | 2023/07/13       | 2024/07/12           |
| Climate Chamber            | ESPEC                             | EL-10KA            | A20120523       | 2023/07/13       | 2024/07/12           |
| Controller                 | EM Electronics                    | Controller EM 1000 | N/A             | N/A              | N/A                  |
| Horn Antenna               | Schwarzbeck                       | BBHA 9120D         | 01622           | 2023/07/13       | 2024/07/12           |
| Active Loop Antenna        | Beijing Da Ze Technology Co.,Ltd. | ZN30900C           | 15006           | 2023/07/13       | 2024/07/12           |
| Bilog Antenna              | Schwarzbeck                       | VULB9163           | 000976          | 2023/07/13       | 2024/07/12           |
| Broadband Horn Antenna     | SCHWARZBECK                       | BBHA 9170          | 791             | 2023/07/13       | 2024/07/12           |
| Amplifier                  | Schwarzbeck                       | BBV 9743           | #202            | 2023/07/14       | 2024/07/13           |
| Amplifier                  | Schwarzbeck                       | BBV9179            | 9719-025        | 2023/07/14       | 2024/07/13           |
| Amplifier                  | EMCI                              | EMC051845B         | 980355          | 2023/07/14       | 2024/07/13           |
| Temperature/Humidity Meter | Gangxing                          | CTH-608            | 02              | 2023/07/13       | 2024/07/12           |
| High-Pass Filter           | HX Microwave CO., LTD             | HXLBQ-DZA81        | N/A             | 2023/08/30       | 2024/08/29           |
| High-Pass Filter           | HX Microwave CO., LTD             | HXLBQ-DZA200       | N/A             | 2023/08/30       | 2024/08/29           |
| RF Cable(below 1GHz)       | HUBER+SUHNER                      | RG214              | RE01            | 2023/07/13       | 2024/07/12           |
| RF Cable(above 1GHz)       | HUBER+SUHNER                      | RG214              | RE02            | 2023/07/13       | 2024/07/12           |
| Data acquisition card      | Agilent                           | U2531A             | TW53323507      | 2023/07/13       | 2024/07/12           |
| Power Sensor               | Agilent                           | U2021XA            | MY5365004       | 2023/07/13       | 2024/07/12           |
| Test Control Unit          | Tonscend                          | JS0806-1           | 178060067       | 2023/07/13       | 2024/07/12           |
| Automated filter bank      | Tonscend                          | JS0806-F           | 19F8060177      | 2023/07/13       | 2024/07/12           |
| EMI Test Software          | Tonscend                          | JS1120-1           | Ver 2.6.8.0518  | /                | /                    |
| EMI Test Software          | Tonscend                          | JS1120-3           | Ver 2.5.77.0418 | /                | /                    |
| EMI Test Software          | Tonscend                          | JS32-CE            | Ver 2.5         | /                | /                    |
| EMI Test Software          | Tonscend                          | JS32-RE            | Ver 2.5.1.8     | /                | /                    |

Note: 1. The Cal.Interval was one year.

## 4. TEST CONDITIONS AND RESULTS

### 4.1. AC Power Conducted Emission

#### TEST CONFIGURATION



#### TEST PROCEDURE

- 1 The equipment was set up as per the test configuration to simulate typical actual usage per the user's manual. The EUT is a tabletop system, a wooden table with a height of 0.8 meters is used and is placed on the ground plane as per ANSI C63.10-2020.
- 2 Support equipment, if needed, was placed as per ANSI C63.10-2020
- 3 All I/O cables were positioned to simulate typical actual usage as per ANSI C63.10-2020
- 4 The EUT received DC 5.0V power, the adapter received AC120V/60Hz or AC 240V/50Hz power through a Line Impedance Stabilization Network (LISN) which supplied power source and was grounded to the ground plane.
- 5 All support equipments received AC power from a second LISN, if any.
- 6 The EUT test program was started. Emissions were measured on each current carrying line of the EUT using a spectrum Analyzer / Receiver connected to the LISN powering the EUT. The LISN has two monitoring points: Line 1 (Hot Side) and Line 2 (Neutral Side). Two scans were taken: one with Line 1 connected to Analyzer / Receiver and Line 2 connected to a 50 ohm load; the second scan had Line 1 connected to a 50 ohm load and Line 2 connected to the Analyzer / Receiver.
- 7 Analyzer / Receiver scanned from 150 KHz to 30MHz for emissions in each of the test modes.
- 8 During the above scans, the emissions were maximized by cable manipulation.

#### AC Power Conducted Emission Limit

For intentional device, according to §15.207(a) AC Power Conducted Emission Limits is as following:

| Frequency range (MHz) | Limit (dBuV) |           |
|-----------------------|--------------|-----------|
|                       | Quasi-peak   | Average   |
| 0.15-0.5              | 66 to 56*    | 56 to 46* |
| 0.5-5                 | 56           | 46        |
| 5-30                  | 60           | 50        |

\* Decreases with the logarithm of the frequency.

#### DISTURBANCE Calculation

The AC mains conducted disturbance is calculated by adding the 10dB Pulse Limiter and Cable Factor and Duty Cycle Correction Factor (if any) from the measured reading. The basic equation with a sample calculation is as follows:

$$CD \text{ (dBuV)} = RA \text{ (dBuV)} + PL \text{ (dB)} + CL \text{ (dB)}$$

|                                  |  |
|----------------------------------|--|
| Where CD = Conducted Disturbance | CL = Cable Attenuation Factor (Cable Loss) |
| RA = Reading Amplitude           | PL = 10 dB Pulse Limiter Factor            |

**TEST RESULTS**

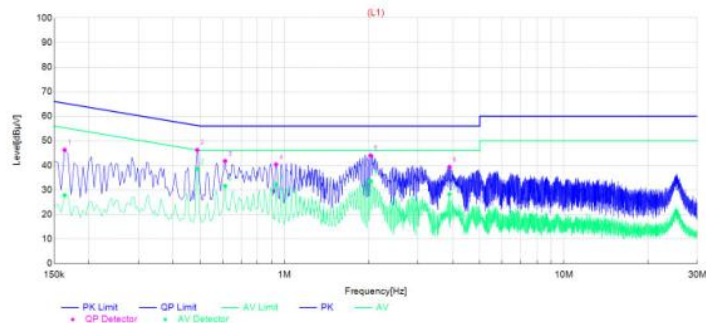
Remark: We measured Conducted Emission at GFSK mode from 150 KHz to 30MHz in AC120V and the worst case was recorded.

|               |             |                |     |
|---------------|-------------|----------------|-----|
| Temperature   | 25℃         | Humidity       | 60% |
| Test Engineer | Lushan Kong | Configurations | BT  |

Adapter: TPA-46B050100UU

|               |              |              |   |
|---------------|--------------|--------------|---|
| Power supply: | AC 120V/60Hz | Polarization | L |
|---------------|--------------|--------------|---|

Test Graph



Final Data List

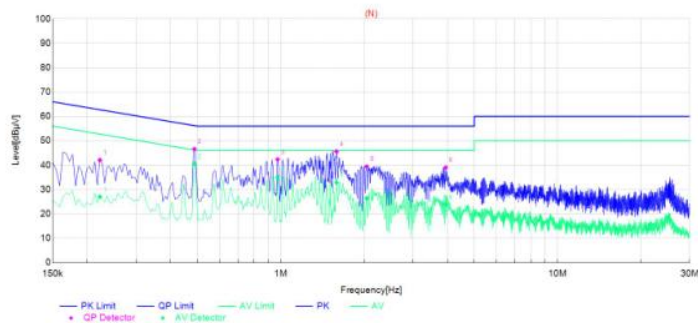
| NO. | Frequency | QP<br>Reading | AVG.<br>Reading | Factor | QP<br>Result | AVG.<br>Result | QP<br>Limit | AVG.<br>Limit | QP<br>Margin | AVG.<br>Margin | Line | Remark |
|-----|-----------|---------------|-----------------|--------|--------------|----------------|-------------|---------------|--------------|----------------|------|--------|
| 1   | 0.1635    | 35.98         | 17.51           | 10.29  | 46.27        | 27.80          | 65.28       | 55.28         | 19.01        | 27.48          | L1   | PASS   |
| 2   | 0.4875    | 35.99         | 28.28           | 10.25  | 46.24        | 38.53          | 56.21       | 46.21         | 9.97         | 7.68           | L1   | PASS   |
| 3   | 0.6135    | 31.55         | 21.38           | 10.20  | 41.75        | 31.58          | 56.00       | 46.00         | 14.25        | 14.42          | L1   | PASS   |
| 4   | 0.933     | 30.14         | 21.98           | 10.21  | 40.35        | 32.19          | 56.00       | 46.00         | 15.65        | 13.81          | L1   | PASS   |
| 5   | 2.031     | 33.71         | 23.31           | 10.27  | 43.98        | 33.58          | 56.00       | 46.00         | 12.02        | 12.42          | L1   | PASS   |
| 6   | 3.894     | 28.97         | 17.82           | 10.37  | 39.34        | 28.19          | 56.00       | 46.00         | 16.66        | 17.81          | L1   | PASS   |

Note:1. Result (dBμV) = Reading (dBμV) + Factor (dB).

2. Factor (dB) = Cable loss (dB) + LISN Factor (dB).

|               |              |              |   |
|---------------|--------------|--------------|---|
| Power supply: | AC 120V/60Hz | Polarization | N |
|---------------|--------------|--------------|---|

Test Graph



Final Data List

| NO. | Frequency | QP<br>Reading | AVG.<br>Reading | Factor | QP<br>Result | AVG.<br>Result | QP<br>Limit | AVG.<br>Limit | QP<br>Margin | AVG.<br>Margin | Line | Remark |
|-----|-----------|---------------|-----------------|--------|--------------|----------------|-------------|---------------|--------------|----------------|------|--------|
| 1   | 0.222     | 31.96         | 16.85           | 10.14  | 42.10        | 26.99          | 62.74       | 52.74         | 20.64        | 25.75          | N    | PASS   |
| 2   | 0.4875    | 36.35         | 30.28           | 10.25  | 46.60        | 40.53          | 56.21       | 46.21         | 9.61         | 5.68           | N    | PASS   |
| 3   | 0.9735    | 32.15         | 24.80           | 10.20  | 42.35        | 35.00          | 56.00       | 46.00         | 13.65        | 11.00          | N    | PASS   |
| 4   | 1.59      | 35.34         | 22.64           | 10.24  | 45.58        | 32.88          | 56.00       | 46.00         | 10.42        | 13.12          | N    | PASS   |
| 5   | 2.0445    | 29.10         | 16.09           | 10.27  | 39.37        | 26.36          | 56.00       | 46.00         | 16.63        | 19.64          | N    | PASS   |
| 6   | 3.9435    | 28.63         | 13.43           | 10.37  | 39.00        | 23.80          | 56.00       | 46.00         | 17.00        | 22.20          | N    | PASS   |

Note:1. Result (dBμV) = Reading (dBμV) + Factor (dB).

2. Factor (dB) = Cable loss (dB) + LISN Factor (dB).

## Adapter: DCT07W050100US-C1

|               |              |              |   |
|---------------|--------------|--------------|---|
| Power supply: | AC 120V/60Hz | Polarization | L |
|---------------|--------------|--------------|---|

Test Graph

| Final Data List |           |         |         |        |        |        |       |       |        |        |      |        |
|-----------------|-----------|---------|---------|--------|--------|--------|-------|-------|--------|--------|------|--------|
| NO.             | Frequency | QP      | AVG.    | Factor | QP     | AVG.   | QP    | AVG.  | QP     | AVG.   | Line | Remark |
|                 |           | Reading | Reading |        | Result | Result | Limit | Limit | Margin | Margin |      |        |
| 1               | 0.204     | 34.04   | 12.30   | 10.15  | 44.19  | 22.45  | 63.45 | 53.45 | 19.26  | 31.00  | L1   | PASS   |
| 2               | 0.4875    | 35.30   | 28.04   | 10.25  | 45.55  | 38.29  | 56.21 | 46.21 | 10.66  | 7.92   | L1   | PASS   |
| 3               | 0.933     | 31.35   | 21.98   | 10.21  | 41.56  | 32.19  | 56.00 | 46.00 | 14.44  | 13.81  | L1   | PASS   |
| 4               | 1.986     | 34.08   | 22.73   | 10.27  | 44.35  | 33.00  | 56.00 | 46.00 | 11.65  | 13.00  | L1   | PASS   |
| 5               | 2.922     | 29.31   | 16.06   | 10.33  | 39.64  | 26.39  | 56.00 | 46.00 | 16.36  | 19.61  | L1   | PASS   |
| 6               | 4.749     | 27.91   | 12.19   | 10.35  | 38.26  | 22.54  | 56.00 | 46.00 | 17.74  | 23.46  | L1   | PASS   |

Note:1. Result (dBμV) = Reading (dBμV) + Factor (dB).

2. Factor (dB) = Cable loss (dB) + LISN Factor (dB).

|               |              |              |   |
|---------------|--------------|--------------|---|
| Power supply: | AC 120V/60Hz | Polarization | N |
|---------------|--------------|--------------|---|

Test Graph

| Final Data List |           |         |         |        |        |        |       |       |        |        |      |        |
|-----------------|-----------|---------|---------|--------|--------|--------|-------|-------|--------|--------|------|--------|
| NO.             | Frequency | QP      | AVG.    | Factor | QP     | AVG.   | QP    | AVG.  | QP     | AVG.   | Line | Remark |
|                 |           | Reading | Reading |        | Result | Result | Limit | Limit | Margin | Margin |      |        |
| 1               | 0.2625    | 31.08   | 18.13   | 10.12  | 41.20  | 28.25  | 61.35 | 51.35 | 20.15  | 23.10  | N    | PASS   |
| 2               | 0.4875    | 36.21   | 31.67   | 10.25  | 46.46  | 41.92  | 56.21 | 46.21 | 9.75   | 4.29   | N    | PASS   |
| 3               | 1.05      | 31.20   | 23.14   | 10.20  | 41.40  | 33.34  | 56.00 | 46.00 | 14.60  | 12.66  | N    | PASS   |
| 4               | 1.572     | 36.39   | 23.99   | 10.24  | 46.63  | 34.23  | 56.00 | 46.00 | 9.37   | 11.77  | N    | PASS   |
| 5               | 2.22      | 28.10   | 16.80   | 10.29  | 38.39  | 27.09  | 56.00 | 46.00 | 17.61  | 18.91  | N    | PASS   |
| 6               | 3.597     | 26.09   | 15.38   | 10.36  | 36.45  | 25.74  | 56.00 | 46.00 | 19.55  | 20.26  | N    | PASS   |

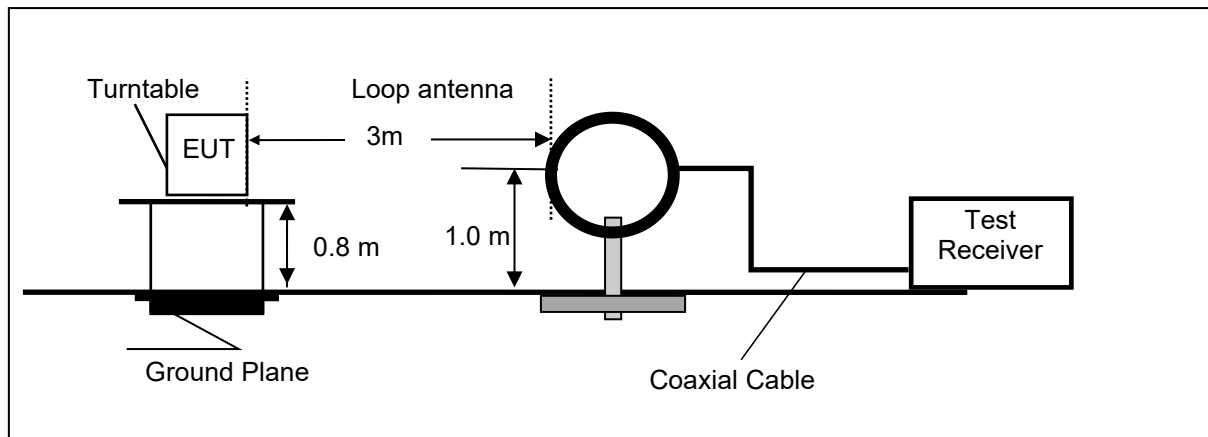
Note:1. Result (dBμV) = Reading (dBμV) + Factor (dB).

2. Factor (dB) = Cable loss (dB) + LISN Factor (dB).

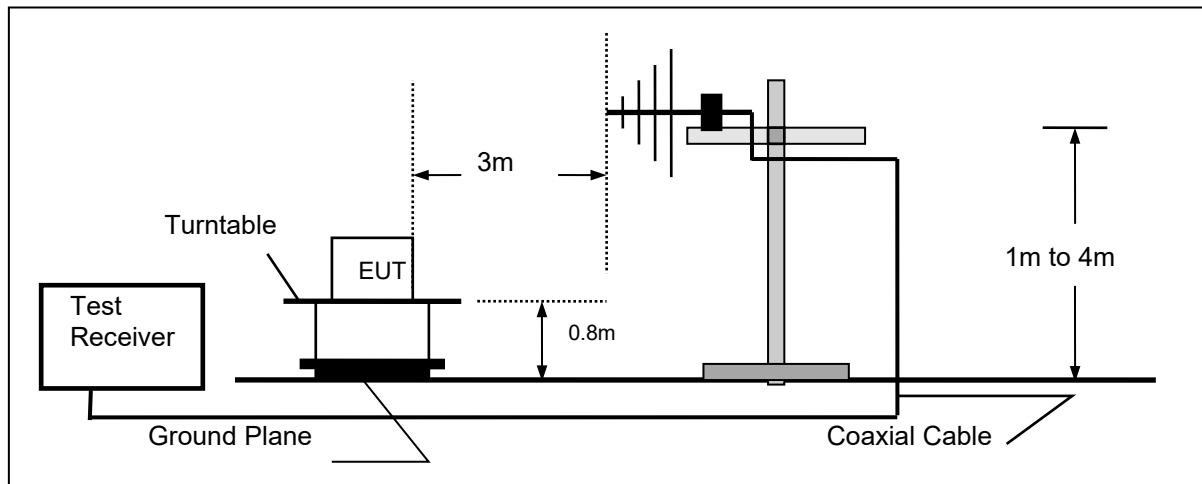
## 4.2. Radiated Emission

### TEST CONFIGURATION

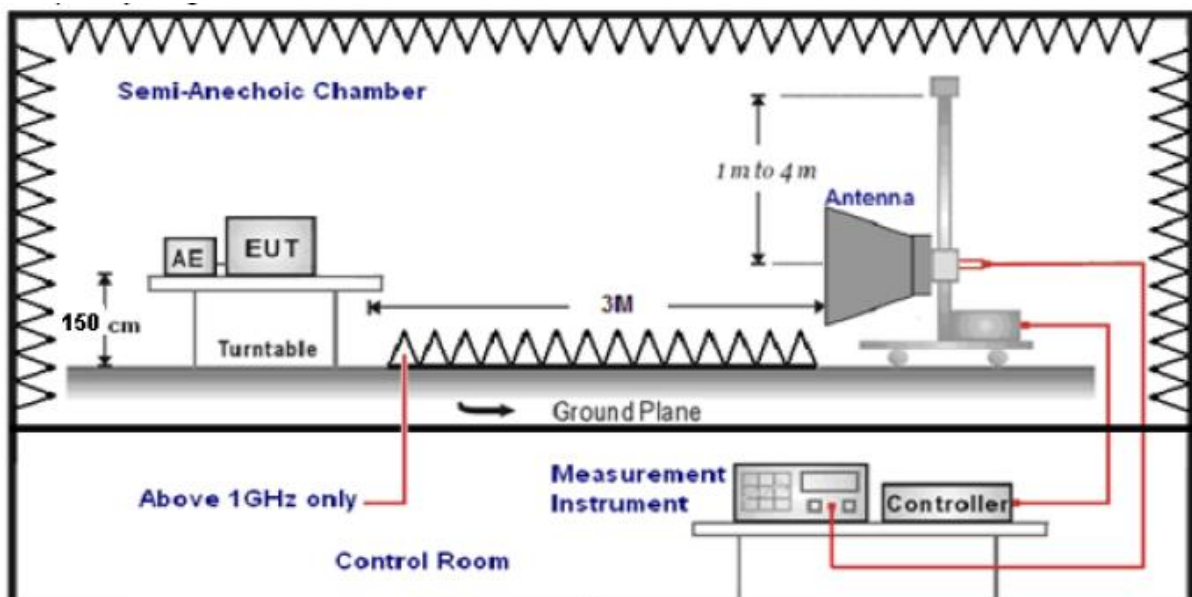
Frequency range 9 KHz – 30MHz



Frequency range 30MHz – 1000MHz



Frequency range above 1GHz-25GHz



**TEST PROCEDURE**

1. The EUT was placed on a turn table which is 0.8m above ground plane when testing frequency range 9 KHz –1GHz;the EUT was placed on a turn table which is 1.5m above ground plane when testing frequency range 1GHz – 25GHz.
2. Maximum procedure was performed by raising the receiving antenna from 1m to 4m and rotating the turn table from 0°C to 360°C to acquire the highest emissions from EUT.
3. And also, each emission was to be maximized by changing the polarization of receiving antenna both horizontal and vertical.
4. Repeat above procedures until all frequency measurements have been completed.
5. Radiated emission test frequency band from 30MHz to 25GHz.
6. The distance between test antenna and EUT as following table states:

| Test Frequency range | Test Antenna Type          | Test Distance |
|----------------------|----------------------------|---------------|
| 9KHz-30MHz           | Active Loop Antenna        | 3             |
| 30MHz-1GHz           | Ultra-Broadband Antenna    | 3             |
| 1GHz-18GHz           | Double Ridged Horn Antenna | 3             |
| 18GHz-25GHz          | Horn Antenna               | 1             |

7. Setting test receiver/spectrum as following table states:

| Test Frequency range | Test Receiver/Spectrum Setting  | Detector |
|----------------------|---|----------|
| 9KHz-150KHz          | RBW=200Hz/VBW=3KHz,Sweep time=Auto  | QP       |
| 150KHz-30MHz         | RBW=9KHz/VBW=100KHz,Sweep time=Auto   | QP       |
| 30MHz-1GHz           | RBW=120KHz/VBW=1000KHz,Sweep time=Auto  | QP       |
| 1GHz-40GHz           | Peak Value: RBW=1MHz/VBW=3MHz,<br>Sweep time=Auto<br>Average Value: RBW=1MHz/VBW=10Hz,<br>Sweep time=Auto | Peak     |

**Field Strength Calculation**

The field strength is calculated by adding the Antenna Factor and Cable Factor and subtracting the Amplifier Gain and Duty Cycle Correction Factor(if any) from the measured reading. The basic equation with a sample calculation is as follows:

$$FS = RA + AF + CL - AG$$

|                           |  |
|---------------------------|--|
| Where FS = Field Strength | CL = Cable Attenuation Factor (Cable Loss) |
| RA = Reading Amplitude    | AG = Amplifier Gain                        |
| AF = Antenna Factor       |  |

$$Transd=AF +CL-AG$$

**RADIATION LIMIT**

For intentional device, according to §15.209(a), the general requirement of field strength of radiated emission from intentional radiators at a distance of 3 meters shall not exceed the following table. According to § 15.247(d), in any 100kHz bandwidth outside the frequency band in which the EUT is operating, the radio frequency power that is produced by the intentional radiator shall be at least 20dB below that in the 100kHz bandwidth within the band that contains the highest level of desired power.

The pre-test have done for the EUT in three axes and found the worst emission at position shown in test setup photos.

| Frequency (MHz) | Distance (Meters) | Radiated (dBμV/m)                          | Radiated (μV/m)       |
|-----------------|-------------------|--|-----------------------|
| 0.009-0.49      | 3                 | $20\log(2400/F(\text{KHz}))+40\log(300/3)$ | $2400/F(\text{KHz})$  |
| 0.49-1.705      | 3                 | $20\log(24000/F(\text{KHz}))+40\log(30/3)$ | $24000/F(\text{KHz})$ |
| 1.705-30        | 3                 | $20\log(30)+40\log(30/3)$                  | 30                    |
| 30-88           | 3                 | 40.0                                       | 100                   |
| 88-216          | 3                 | 43.5                                       | 150                   |
| 216-960         | 3                 | 46.0                                       | 200                   |
| Above 960       | 3                 | 54.0                                       | 500                   |

**TEST RESULTS**

Remark: We measured Radiated Emission at GFSK mode from 9KHz to 25GHz in AC120V and the worst case was recorded.

|               |             |                |     |
|---------------|-------------|----------------|-----|
| Temperature   | 25℃         | Humidity       | 55% |
| Test Engineer | Lushan Kong | Configurations | BT  |

**For 9 KHz~30MHz**

| Freq. (MHz) | Level (dBuV) | Over Limit (dB) | Over Limit (dBuV) | Remark   |
|-------------|--------------|-----------------|-------------------|----------|
| -           | -            | -               | -                 | See Note |

Note:

The amplitude of spurious emissions which are attenuated by more than 20 dB below the permissible value has no need to be reported.

Distance extrapolation factor =  $40 \log (\text{specific distance} / \text{test distance})$  (dB);

Limit line = specific limits (dBuV) + distance extrapolation factor.

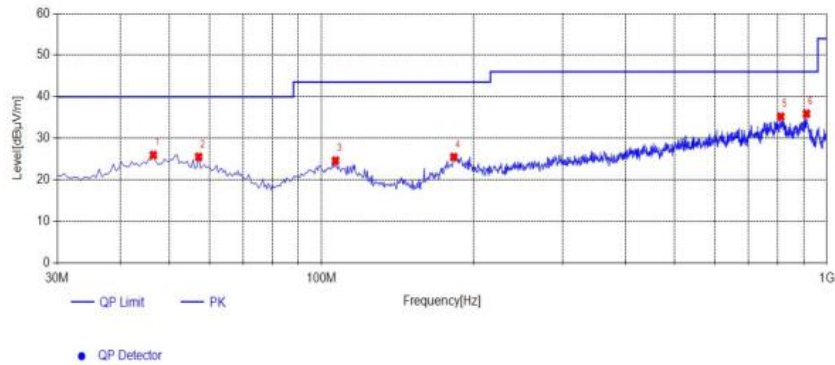


For 30MHz to 1000MHz

Adapter: TPA-46B050100UU

## Horizontal

## Test Graph



## Suspected List

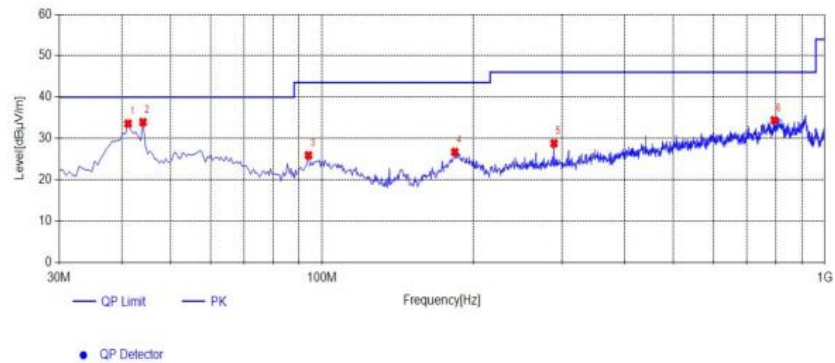
| NO. | Frequency [MHz] | Reading [dBμV/m] | Factor [dB] | Result [dBμV/m] | Limit [dBμV/m] | Margin [dB] | Height [cm] | Angle [°] | Detector | Polarity   | Remark |
|-----|-----------------|------------------|-------------|-----------------|----------------|-------------|-------------|-----------|----------|------------|--------|
| 1   | 46.49           | 29.02            | -3.06       | 25.96           | 40.00          | 14.04       | 100         | 123       | PK       | Horizontal | PASS   |
| 2   | 57.16           | 29.04            | -3.54       | 25.50           | 40.00          | 14.50       | 100         | 123       | PK       | Horizontal | PASS   |
| 3   | 106.63          | 28.16            | -3.57       | 24.59           | 43.50          | 18.91       | 100         | 136       | PK       | Horizontal | PASS   |
| 4   | 182.775         | 31.56            | -6.09       | 25.47           | 43.50          | 18.03       | 100         | 294       | PK       | Horizontal | PASS   |
| 5   | 810.85          | 27.66            | 7.54        | 35.20           | 46.00          | 10.80       | 100         | 209       | PK       | Horizontal | PASS   |
| 6   | 911.73          | 27.61            | 8.29        | 35.90           | 46.00          | 10.10       | 100         | 205       | PK       | Horizontal | PASS   |

Note:1. Result (dBμV/m) = Reading(dBμV/m) + Factor (dB) .

2. Factor (dB) = Antenna Factor (dB/m) + Cable loss (dB) - Pre Amplifier gain (dB).

## Vertical

## Test Graph



## Suspected List

| NO. | Frequency [MHz] | Reading [dBμV/m] | Factor [dB] | Result [dBμV/m] | Limit [dBμV/m] | Margin [dB] | Height [cm] | Angle [°] | Detector | Polarity | Remark |
|-----|-----------------|------------------|-------------|-----------------|----------------|-------------|-------------|-----------|----------|----------|--------|
| 1   | 41.155          | 37.62            | -4.05       | 33.57           | 40.00          | 6.43        | 100         | 150       | PK       | Vertical | PASS   |
| 2   | 44.065          | 37.34            | -3.41       | 33.93           | 40.00          | 6.07        | 100         | 281       | PK       | Vertical | PASS   |
| 3   | 94.02           | 31.40            | -5.48       | 25.92           | 43.50          | 17.58       | 100         | 111       | PK       | Vertical | PASS   |
| 4   | 183.745         | 32.67            | -5.94       | 26.73           | 43.50          | 16.77       | 100         | 360       | PK       | Vertical | PASS   |
| 5   | 289.475         | 30.96            | -2.17       | 28.79           | 46.00          | 17.21       | 100         | 160       | PK       | Vertical | PASS   |
| 6   | 793.875         | 27.30            | 7.10        | 34.40           | 46.00          | 11.60       | 100         | 238       | PK       | Vertical | PASS   |

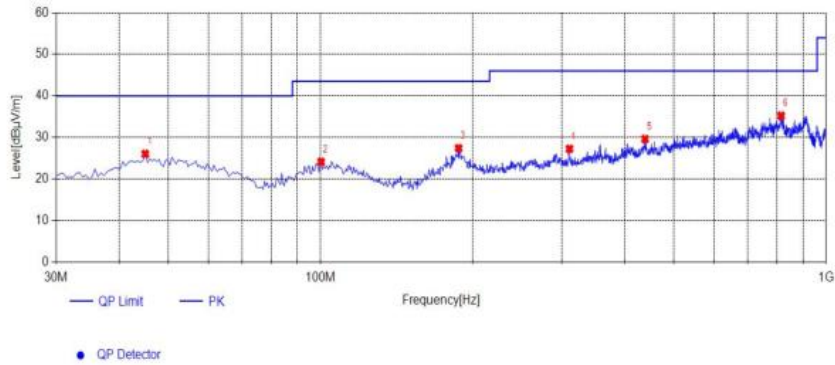
Note:1. Result (dBμV/m) = Reading(dBμV/m) + Factor (dB) .

2. Factor (dB) = Antenna Factor (dB/m) + Cable loss (dB) - Pre Amplifier gain (dB).

## Adapter: DCT07W050100US-C1

## Horizontal

## Test Graph



## Suspected List

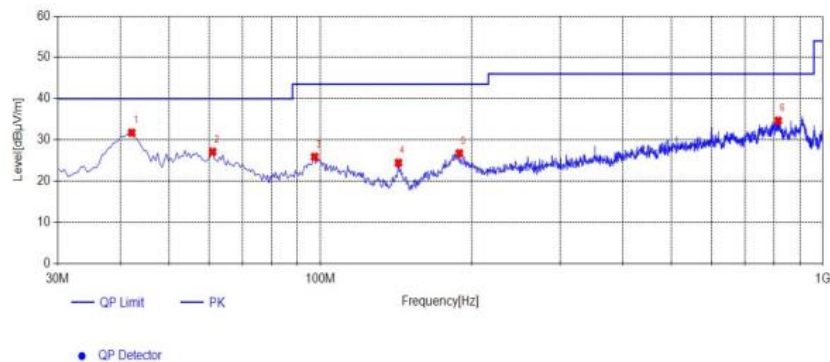
| NO. | Frequency [MHz] | Reading [dBμV/m] | Factor [dB] | Result [dBμV/m] | Limit [dBμV/m] | Margin [dB] | Height [cm] | Angle [°] | Detector | Polarity   | Remark |
|-----|-----------------|------------------|-------------|-----------------|----------------|-------------|-------------|-----------|----------|------------|--------|
| 1   | 45.035          | 29.35            | -3.32       | 26.03           | 40.00          | 13.97       | 100         | 354       | PK       | Horizontal | PASS   |
| 2   | 100.325         | 28.68            | -4.58       | 24.10           | 43.50          | 19.40       | 100         | 229       | PK       | Horizontal | PASS   |
| 3   | 187.625         | 32.96            | -5.57       | 27.39           | 43.50          | 16.11       | 100         | 105       | PK       | Horizontal | PASS   |
| 4   | 310.815         | 29.18            | -1.94       | 27.24           | 46.00          | 18.76       | 100         | 91        | PK       | Horizontal | PASS   |
| 5   | 438.37          | 27.96            | 1.64        | 29.60           | 46.00          | 16.40       | 100         | 91        | PK       | Horizontal | PASS   |
| 6   | 814.73          | 27.90            | 7.31        | 35.21           | 46.00          | 10.79       | 100         | 121       | PK       | Horizontal | PASS   |

Note:1. Result (dBμV/m) = Reading(dBμV/m) + Factor (dB) .

2. Factor (dB) = Antenna Factor (dB/m) + Cable loss (dB) - Pre Amplifier gain (dB).

## Vertical

## Test Graph



## Suspected List

| NO. | Frequency [MHz] | Reading [dBμV/m] | Factor [dB] | Result [dBμV/m] | Limit [dBμV/m] | Margin [dB] | Height [cm] | Angle [°] | Detector | Polarity | Remark |
|-----|-----------------|------------------|-------------|-----------------|----------------|-------------|-------------|-----------|----------|----------|--------|
| 1   | 42.125          | 35.57            | -3.85       | 31.72           | 40.00          | 8.28        | 100         | 52        | PK       | Vertical | PASS   |
| 2   | 61.04           | 31.97            | -4.87       | 27.10           | 40.00          | 12.90       | 100         | 190       | PK       | Vertical | PASS   |
| 3   | 97.415          | 30.80            | -4.93       | 25.87           | 43.50          | 17.63       | 100         | 29        | PK       | Vertical | PASS   |
| 4   | 143.005         | 32.41            | -7.98       | 24.43           | 43.50          | 19.07       | 100         | 259       | PK       | Vertical | PASS   |
| 5   | 189.08          | 32.12            | -5.38       | 26.74           | 43.50          | 16.76       | 100         | 48        | PK       | Vertical | PASS   |
| 6   | 814.73          | 27.32            | 7.31        | 34.63           | 46.00          | 11.37       | 100         | 236       | PK       | Vertical | PASS   |

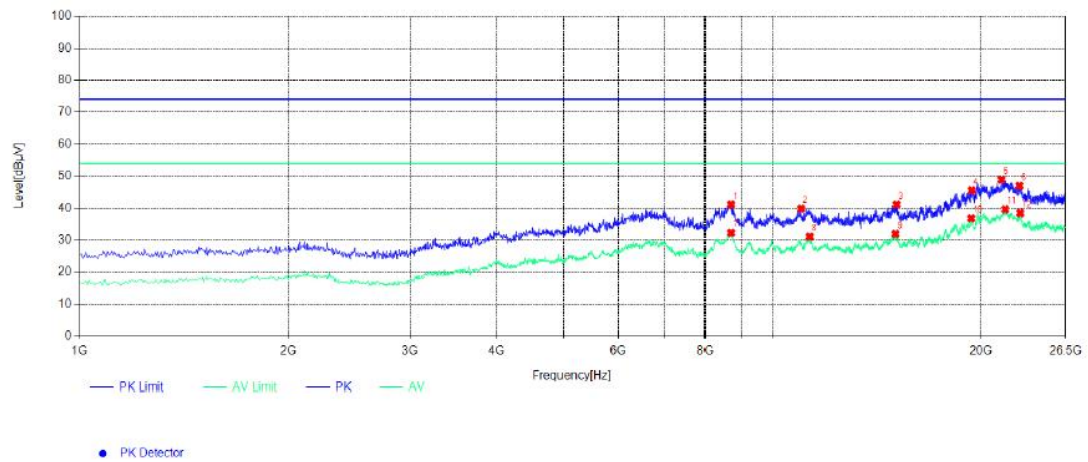
Note:1. Result (dBμV/m) = Reading(dBμV/m) + Factor (dB) .

2. Factor (dB) = Antenna Factor (dB/m) + Cable loss (dB) - Pre Amplifier gain (dB).

## For Greater than 1GHz

## Horizontal (2402MHz)

## Test Graph



## Suspected List

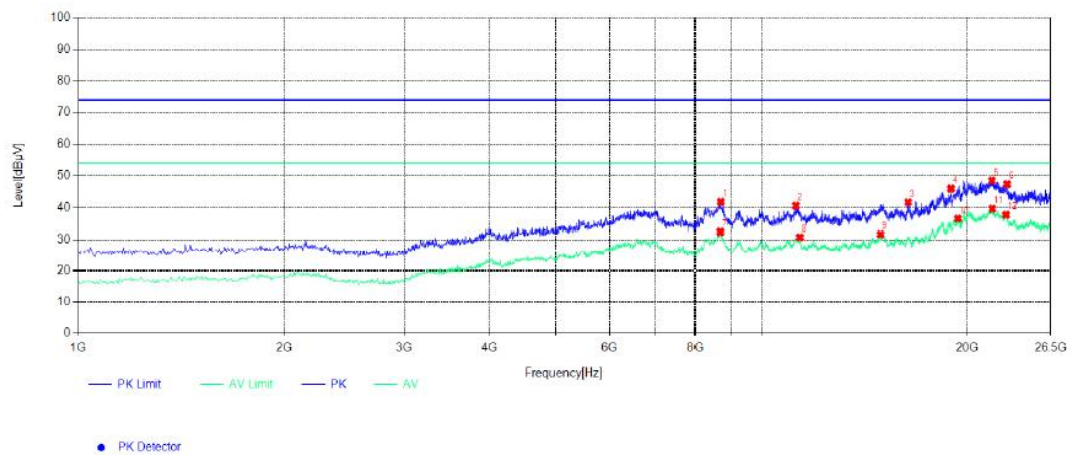
| NO. | Frequency [MHz] | Reading [dBμV/m] | Factor [dB] | Result [dBμV/m] | Limit [dBμV/m] | Margin [dB] | Height [cm] | Angle [°] | Detector | Polarity   | Remark |
|-----|-----------------|------------------|-------------|-----------------|----------------|-------------|-------------|-----------|----------|------------|--------|
| 1   | 8697.05         | 30.99            | 10.01       | 41.00           | 74             | 33.00       | 150         | 137       | PK       | Horizontal | PASS   |
| 2   | 11263.03        | 32.43            | 10.18       | 38.07           | 74             | 35.93       | 150         | 106       | PK       | Horizontal | PASS   |
| 3   | 15012.07        | 87.91            | -0.55       | 38.81           | 74             | 35.19       | 150         | 91        | PK       | Horizontal | PASS   |
| 4   | 19348.00        | 82.16            | -0.67       | 36.83           | 74             | 37.17       | 150         | 125       | PK       | Horizontal | PASS   |
| 5   | 21827.00        | 42.33            | 2.46        | 38.72           | 74             | 35.28       | 150         | 271       | PK       | Horizontal | PASS   |
| 6   | 22786.03        | 29.68            | 2.76        | 29.84           | 74             | 44.16       | 150         | 48        | PK       | Horizontal | PASS   |
| 7   | 8727.97         | 65.32            | 2.56        | 29.98           | 54             | 24.02       | 150         | 176       | AV       | Horizontal | PASS   |
| 8   | 11282.92        | 51.87            | 2.93        | 28.38           | 54             | 25.62       | 150         | 262       | AV       | Horizontal | PASS   |
| 9   | 15077.94        | 43.26            | 13.97       | 28.00           | 54             | 26.00       | 150         | 245       | AV       | Horizontal | PASS   |
| 10  | 19342.96        | 32.74            | 14.07       | 29.95           | 54             | 24.05       | 150         | 213       | AV       | Horizontal | PASS   |
| 11  | 21709.93        | 56.12            | 19.10       | 28.12           | 54             | 25.88       | 150         | 101       | AV       | Horizontal | PASS   |
| 12  | 22745.05        | 47.53            | 19.34       | 29.14           | 54             | 24.86       | 150         | 248       | AV       | Horizontal | PASS   |

Note: 1. Result (dBμV/m) = Reading (dBμV/m) + Factor (dB) .

2. Factor (dB) = Antenna Factor (dB/m) + Cable loss (dB) - Pre Amplifier gain (dB).

## Vertical (2402MHz)

## Test Graph



## Suspected List

| NO. | Frequency [MHz] | Reading [dBμV/m] | Factor [dB] | Result [dBμV/m] | Limit [dBμV/m] | Margin [dB] | Height [cm] | Angle [°] | Detector | Polarity | Remark |
|-----|-----------------|------------------|-------------|-----------------|----------------|-------------|-------------|-----------|----------|----------|--------|
| 1   | 8697.03         | 31.02            | 10.13       | 41.15           | 74             | 32.85       | 150         | 150       | PK       | Vertical | PASS   |
| 2   | 11262.90        | 27.81            | 10.00       | 37.81           | 74             | 36.19       | 150         | 109       | PK       | Vertical | PASS   |
| 3   | 15012.92        | 38.79            | -0.41       | 38.38           | 74             | 35.62       | 150         | 126       | PK       | Vertical | PASS   |
| 4   | 19348.64        | 38.72            | -0.72       | 37.99           | 74             | 36.01       | 150         | 115       | PK       | Vertical | PASS   |
| 5   | 21827.49        | 36.32            | 2.57        | 38.89           | 74             | 35.11       | 150         | 264       | PK       | Vertical | PASS   |
| 6   | 22783.59        | 35.85            | 2.54        | 38.39           | 74             | 35.61       | 150         | 23        | PK       | Vertical | PASS   |
| 7   | 8727.72         | 27.67            | 2.88        | 30.55           | 54             | 23.45       | 150         | 198       | AV       | Vertical | PASS   |
| 8   | 11281.15        | 26.03            | 2.87        | 28.90           | 54             | 25.10       | 150         | 242       | AV       | Vertical | PASS   |
| 9   | 15075.70        | 14.77            | 13.95       | 28.72           | 54             | 25.28       | 150         | 259       | AV       | Vertical | PASS   |
| 10  | 19339.29        | 14.25            | 13.94       | 28.19           | 54             | 25.81       | 150         | 219       | AV       | Vertical | PASS   |
| 11  | 21708.91        | 10.39            | 19.01       | 29.40           | 54             | 24.60       | 150         | 103       | AV       | Vertical | PASS   |
| 12  | 22745.03        | 9.83             | 19.10       | 28.92           | 54             | 25.08       | 150         | 287       | AV       | Vertical | PASS   |

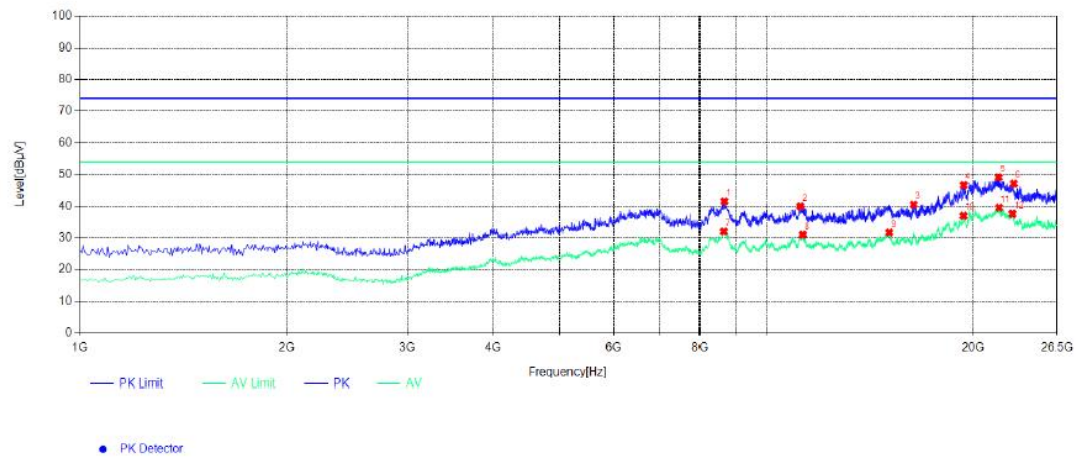
Note: 1. Result (dBμV/m) = Reading(dBμV/m) + Factor (dB) .

2. Factor (dB) = Antenna Factor (dB/m) + Cable loss (dB) - Pre Amplifier gain (dB).



## Horizontal (2440MHz)

## Test Graph



## Suspected List

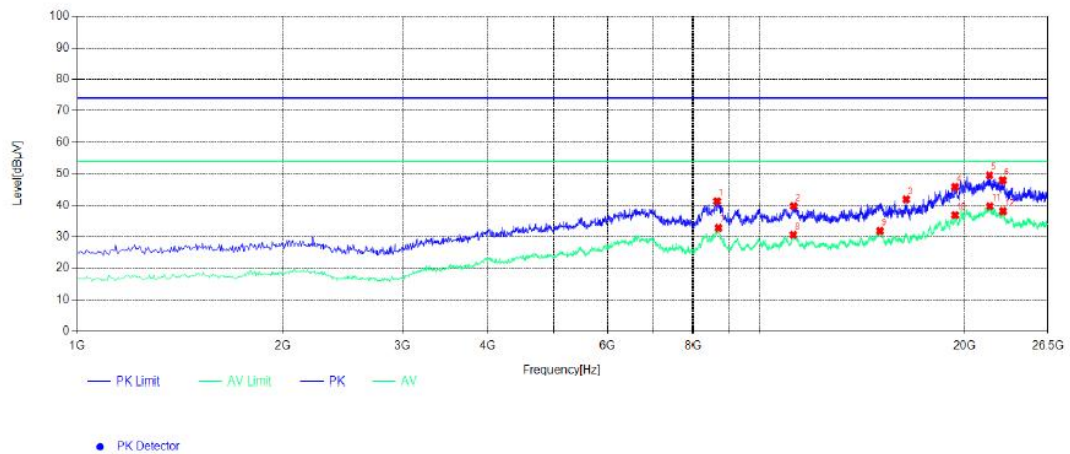
| NO. | Frequency [MHz] | Reading [dBμV/m] | Factor [dB] | Result [dBμV/m] | Limit [dBμV/m] | Margin [dB] | Height [cm] | Angle [°] | Detector | Polarity   | Remark |
|-----|-----------------|------------------|-------------|-----------------|----------------|-------------|-------------|-----------|----------|------------|--------|
| 1   | 8706.91         | 29.44            | 9.97        | 39.41           | 74             | 34.59       | 150         | 137       | PK       | Horizontal | PASS   |
| 2   | 9976.90         | 29.34            | 10.33       | 39.67           | 74             | 34.33       | 150         | 107       | PK       | Horizontal | PASS   |
| 3   | 15010.04        | 39.08            | -0.57       | 38.51           | 74             | 35.49       | 150         | 112       | PK       | Horizontal | PASS   |
| 4   | 19321.91        | 39.01            | -0.73       | 38.28           | 74             | 35.72       | 150         | 92        | PK       | Horizontal | PASS   |
| 5   | 21743.89        | 37.07            | 2.73        | 39.80           | 74             | 34.20       | 150         | 250       | PK       | Horizontal | PASS   |
| 6   | 22741.75        | 35.32            | 2.74        | 38.06           | 74             | 35.94       | 150         | 38        | PK       | Horizontal | PASS   |
| 7   | 8705.35         | 27.29            | 2.84        | 30.13           | 54             | 23.87       | 150         | 156       | AV       | Horizontal | PASS   |
| 8   | 11254.13        | 26.00            | 2.62        | 28.62           | 54             | 25.38       | 150         | 273       | AV       | Horizontal | PASS   |
| 9   | 15090.78        | 14.67            | 14.24       | 28.91           | 54             | 25.09       | 150         | 237       | AV       | Horizontal | PASS   |
| 10  | 19347.86        | 14.17            | 13.64       | 27.81           | 54             | 26.19       | 150         | 181       | AV       | Horizontal | PASS   |
| 11  | 21732.10        | 10.24            | 19.08       | 29.32           | 54             | 24.68       | 150         | 128       | AV       | Horizontal | PASS   |
| 12  | 22767.10        | 9.40             | 19.40       | 28.81           | 54             | 25.19       | 150         | 282       | AV       | Horizontal | PASS   |

Note: 1. Result (dBμV/m) = Reading(dBμV/m) + Factor (dB) .

2. Factor (dB) = Antenna Factor (dB/m) + Cable loss (dB) - Pre Amplifier gain (dB).

## Vertical(2440MHz)

## Test Graph



## Suspected List

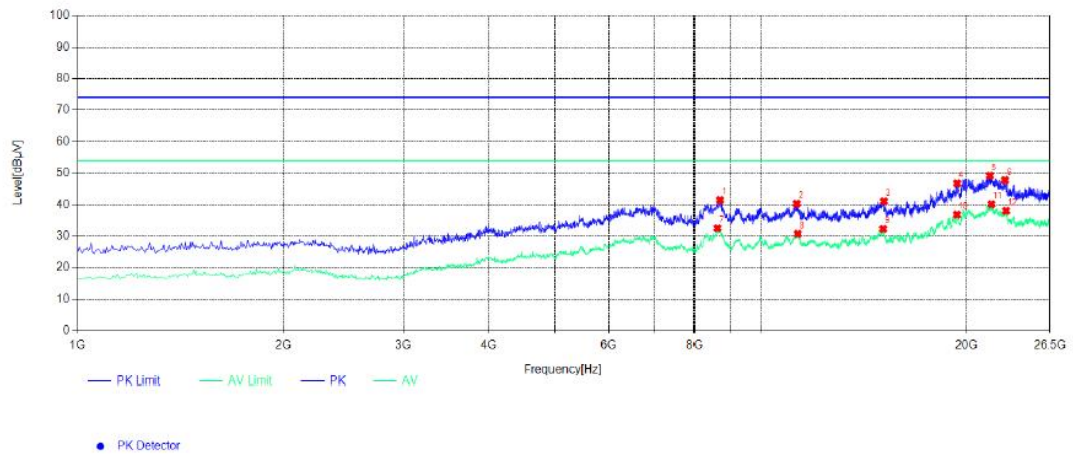
| NO. | Frequency [MHz] | Reading [dBuV/m] | Factor [dB] | Result [dBuV/m] | Limit [dBuV/m] | Margin [dB] | Height [cm] | Angle [°] | Detector | Polarity | Remark |
|-----|-----------------|------------------|-------------|-----------------|----------------|-------------|-------------|-----------|----------|----------|--------|
| 1   | 8707.06         | 29.53            | 10.05       | 39.58           | 74             | 34.42       | 150         | 131       | PK       | Vertical | PASS   |
| 2   | 11237.04        | 27.76            | 10.45       | 38.21           | 74             | 35.79       | 150         | 134       | PK       | Vertical | PASS   |
| 3   | 14957.44        | 39.42            | -0.67       | 38.75           | 74             | 35.25       | 150         | 107       | PK       | Vertical | PASS   |
| 4   | 19348.59        | 38.63            | -0.76       | 37.87           | 74             | 36.13       | 150         | 105       | PK       | Vertical | PASS   |
| 5   | 21716.35        | 37.25            | 2.47        | 39.71           | 74             | 34.29       | 150         | 264       | PK       | Vertical | PASS   |
| 6   | 22765.55        | 36.20            | 2.51        | 38.71           | 74             | 35.29       | 150         | 32        | PK       | Vertical | PASS   |
| 7   | 8681.00         | 27.10            | 2.77        | 29.87           | 54             | 24.13       | 150         | 179       | AV       | Vertical | PASS   |
| 8   | 11208.25        | 26.44            | 2.53        | 28.97           | 54             | 25.03       | 150         | 286       | AV       | Vertical | PASS   |
| 9   | 14960.09        | 14.81            | 14.19       | 29.00           | 54             | 25.00       | 150         | 215       | AV       | Vertical | PASS   |
| 10  | 19355.89        | 14.07            | 13.66       | 27.74           | 54             | 26.26       | 150         | 213       | AV       | Vertical | PASS   |
| 11  | 21783.39        | 10.38            | 19.43       | 29.81           | 54             | 24.19       | 150         | 101       | AV       | Vertical | PASS   |
| 12  | 22839.13        | 9.71             | 19.42       | 29.13           | 54             | 24.87       | 150         | 250       | AV       | Vertical | PASS   |

Note: 1. Result (dBuV/m) = Reading(dBuV/m) + Factor (dB) .

2. Factor (dB) = Antenna Factor (dB/m) + Cable loss (dB) - Pre Amplifier gain (dB).

## Horizontal (2480MHz)

## Test Graph



## Suspected List

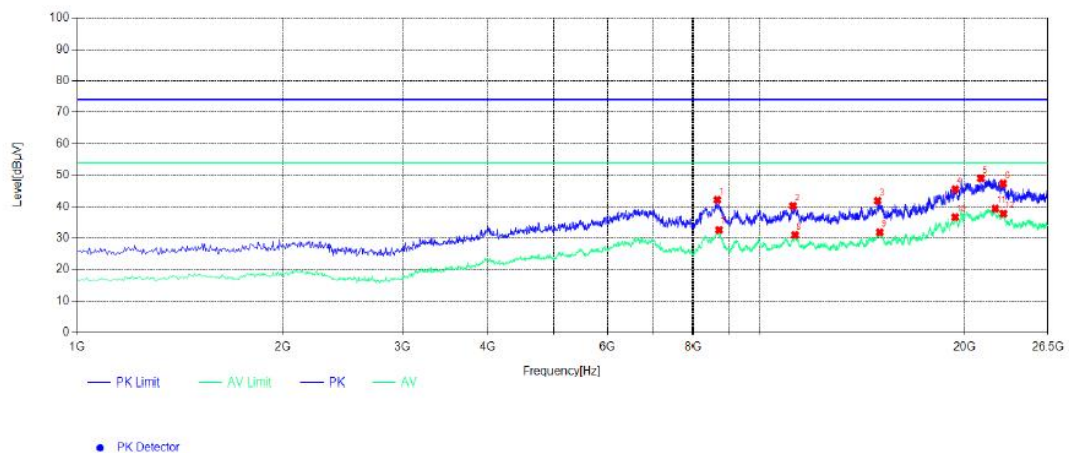
| NO. | Frequency [MHz] | Reading [dBμV/m] | Factor [dB] | Result [dBμV/m] | Limit [dBμV/m] | Margin [dB] | Height [cm] | Angle [°] | Detector | Polarity   | Remark |
|-----|-----------------|------------------|-------------|-----------------|----------------|-------------|-------------|-----------|----------|------------|--------|
| 1   | 8721.91         | 29.82            | 9.98        | 39.79           | 74             | 34.21       | 150         | 140       | PK       | Horizontal | PASS   |
| 2   | 14139.96        | 29.31            | 10.26       | 39.57           | 74             | 34.43       | 150         | 139       | PK       | Horizontal | PASS   |
| 3   | 15051.66        | 38.73            | -0.45       | 38.27           | 74             | 35.73       | 150         | 98        | PK       | Horizontal | PASS   |
| 4   | 19350.94        | 38.28            | -0.69       | 37.59           | 74             | 36.41       | 150         | 130       | PK       | Horizontal | PASS   |
| 5   | 19893.47        | 37.53            | 2.85        | 40.38           | 74             | 33.62       | 150         | 300       | PK       | Horizontal | PASS   |
| 6   | 22829.33        | 36.81            | 2.50        | 39.32           | 74             | 34.68       | 150         | 58        | PK       | Horizontal | PASS   |
| 7   | 8631.31         | 27.58            | 2.95        | 30.53           | 54             | 23.47       | 150         | 161       | AV       | Horizontal | PASS   |
| 8   | 11292.15        | 25.50            | 2.96        | 28.46           | 54             | 25.54       | 150         | 283       | AV       | Horizontal | PASS   |
| 9   | 14975.67        | 15.13            | 14.03       | 29.17           | 54             | 24.83       | 150         | 226       | AV       | Horizontal | PASS   |
| 10  | 19353.96        | 14.20            | 14.04       | 28.24           | 54             | 25.76       | 150         | 206       | AV       | Horizontal | PASS   |
| 11  | 21744.80        | 10.87            | 19.43       | 30.31           | 54             | 23.69       | 150         | 120       | AV       | Horizontal | PASS   |
| 12  | 22732.06        | 10.22            | 19.22       | 29.44           | 54             | 24.56       | 150         | 251       | AV       | Horizontal | PASS   |

Note: 1. Result (dBμV/m) = Reading(dBμV/m) + Factor (dB) .

2. Factor (dB) = Antenna Factor (dB/m) + Cable loss (dB) - Pre Amplifier gain (dB).

## Vertical(2480MHz)

## Test Graph



## Suspected List

| NO. | Frequency [MHz] | Reading [dBuV/m] | Factor [dB] | Result [dBuV/m] | Limit [dBuV/m] | Margin [dB] | Height [cm] | Angle [°] | Detector | Polarity | Remark |
|-----|-----------------|------------------|-------------|-----------------|----------------|-------------|-------------|-----------|----------|----------|--------|
| 1   | 6819.94         | 31.61            | 10.42       | 42.03           | 74             | 31.97       | 150         | 139       | PK       | Vertical | PASS   |
| 2   | 8691.94         | 28.97            | 10.11       | 39.07           | 74             | 34.93       | 150         | 111       | PK       | Vertical | PASS   |
| 3   | 15152.99        | 39.68            | -0.67       | 39.01           | 74             | 34.99       | 150         | 119       | PK       | Vertical | PASS   |
| 4   | 19355.44        | 38.50            | -0.34       | 38.16           | 74             | 35.84       | 150         | 129       | PK       | Vertical | PASS   |
| 5   | 21915.48        | 37.04            | 2.45        | 39.49           | 74             | 34.51       | 150         | 271       | PK       | Vertical | PASS   |
| 6   | 22802.30        | 36.14            | 2.80        | 38.94           | 74             | 35.06       | 150         | 43        | PK       | Vertical | PASS   |
| 7   | 8705.45         | 27.08            | 2.74        | 29.82           | 54             | 24.18       | 150         | 176       | AV       | Vertical | PASS   |
| 8   | 11296.29        | 25.63            | 2.93        | 28.56           | 54             | 25.44       | 150         | 262       | AV       | Vertical | PASS   |
| 9   | 16428.53        | 15.36            | 14.26       | 29.62           | 54             | 24.38       | 150         | 242       | AV       | Vertical | PASS   |
| 10  | 19346.45        | 14.43            | 13.60       | 28.04           | 54             | 25.96       | 150         | 210       | AV       | Vertical | PASS   |
| 11  | 21793.13        | 11.07            | 19.19       | 30.26           | 54             | 23.74       | 150         | 103       | AV       | Vertical | PASS   |
| 12  | 22764.74        | 9.98             | 19.20       | 29.18           | 54             | 24.82       | 150         | 288       | AV       | Vertical | PASS   |

Note: 1. Result (dBuV/m) = Reading(dBuV/m) + Factor (dB) .

2. Factor (dB) = Antenna Factor (dB/m) + Cable loss (dB) - Pre Amplifier gain (dB).

## REMARKS:

1. Emission level (dBuV/m) =Raw Value (dBuV)+Correction Factor (dB/m)
2. Correction Factor (dB/m) = Antenna Factor (dB/m)+Cable Factor (dB)-Pre-amplifier Factor
3. Margin value = Limit value- Emission level.
4. The other emission levels were very low against the limit.
5. Measured used 2.4GHz band filter to avoid power amplifier overload.

**NOTE: All the modes have been tested and recorded worst mode in the report (Adapter: TPA-46B050100UU).**



### 4.3. On Time and Duty Cycle

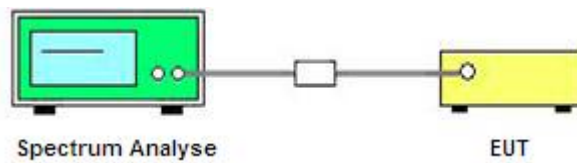
#### LIMIT

None; for reporting purpose only.

#### TEST PROCEDURE

1. Set the center frequency of the spectrum analyzer to the transmitting frequency;
2. Set the span=0MHz, RBW=8MHz, VBW=50MHz, Sweep time=5ms;
3. Detector = peak;
4. Trace mode = Single hold.

#### TEST CONFIGURATION



#### TEST RESULTS

For reporting purpose only.

Please refer to Appendix A.1.

#### 4.4. Maximum Peak Output Power

##### TEST CONFIGURATION



##### TEST PROCEDURE

According to KDB 558074 D01 15.247 Measurement Guidance v05r02 Section 8.3.1 Maximum peak conducted output power, 8.3.1.3 The maximum peak conducted output power may be measured using a broadband peak RF power meter. The power meter shall have a video bandwidth that is greater than or equal to the DTS bandwidth and shall utilize a fast-responding diode detector.

##### LIMIT

The Maximum Peak Output Power Measurement is 30dBm.

##### TEST RESULTS

For reporting purpose only.

Please refer to Appendix A.4.

## 4.5. Power Spectral Density

### TEST CONFIGURATION



### TEST PROCEDURE

1. Use this procedure when the maximum peak conducted output power in the fundamental emission is used to demonstrate compliance.
2. Set the RBW = 3 kHz.
3. Set the VBW = 10 KHz.
4. Set the span to 1.5 times the DTS channel bandwidth.
5. Detector = peak.
6. Sweep time = auto couple.
7. Trace mode = max hold.
8. Allow trace to fully stabilize.
9. Use the peak marker function to determine the maximum power level.
10. If measured value exceeds limit, reduce RBW (no less than 3 kHz) and repeat.
11. The resulting peak PSD level must be 8 dBm.

### LIMIT

For digitally modulated systems, the power spectral density conducted from the intentional radiator to the antenna shall not be greater than 8 dBm in any 3 kHz band during any time interval of continuous transmission.

### TEST RESULTS

For reporting purpose only.

Please refer to Appendix A.5.

#### 4.6. 99% and 6dB Bandwidth

##### TEST CONFIGURATION



##### TEST PROCEDURE

The transmitter output was connected to the spectrum analyzer through an attenuator. The bandwidth of the fundamental frequency was measured by spectrum analyzer with RBW=100 KHz and VBW=300KHz. The 6dB bandwidth is defined as the total spectrum the power of which is higher than peak power minus 6dB. According to KDB 558074 D01 DTS Meas Guidance v05r02 for one of the following procedures may be used to determine the modulated DTS device signal bandwidth.

1. Set RBW = 100 kHz.
2. Set the video bandwidth (VBW)  $\geq 3$  RBW.
3. Detector = Peak.
4. Trace mode = max hold.
5. Sweep = auto couple.
6. Allow the trace to stabilize.
7. Measure the maximum width of the emission that is constrained by the frequencies associated with the two outermost amplitude points (upper and lower frequencies) that are attenuated by 6 dB relative to the maximum level measured in the fundamental emission.

##### LIMIT

For digital modulation systems, the minimum 6 dB bandwidth shall be at least 500 kHz

##### TEST RESULTS

For reporting purpose only.

Please refer to Appendix A.2.

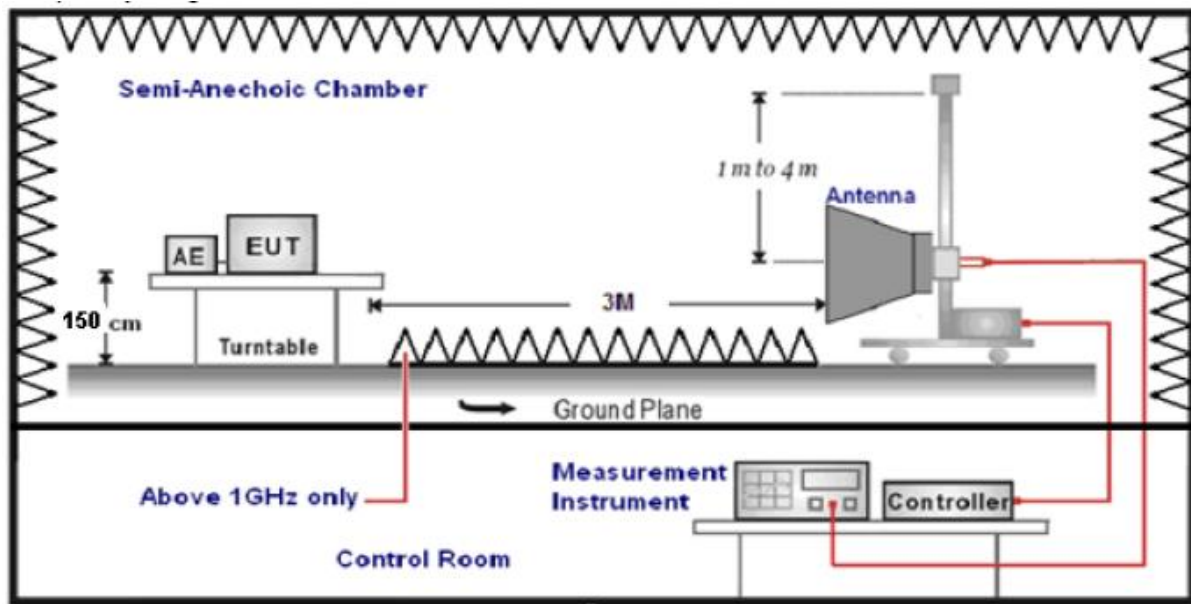
Please refer to Appendix A.3.

#### 4.7. Conducted Spurious Emissions and Band Edge Compliance of RF Emission

##### TEST REQUIREMENT

In any 100 kHz bandwidth outside the frequency band in which the spread spectrum or digitally modulated device is operating, the RF power that is produced shall be at least 20 dB below that in the 100 kHz bandwidth within the band that contains the highest level of the desired power, based on either an RF conducted or a radiated measurement, provided that the transmitter demonstrates compliance with the peak conducted power limits. If the transmitter complies with the conducted power limits based on the use of root-mean-square averaging over a time interval, as permitted under paragraph (b)(3), the attenuation required shall be 30 dB instead of 20dB. Attenuation below the general field strength limits specified in §15.209(a) is not required.

##### TEST CONFIGURATION



##### TEST PROCEDURE

1. The EUT was placed on a turn table which is 1.5m above ground plane.
2. Maximum procedure was performed by raising the receiving antenna from 1m to 4m and rotating the turn table from 0° to 360° to acquire the highest emissions from EUT.
3. And also, each emission was to be maximized by changing the polarization of receiving antenna both horizontal and vertical.
4. Repeat above procedures until all frequency measurements have been completed..
5. The distance between test antenna and EUT was 3 meter:
6. Setting test receiver/spectrum as following table states:

| Test Frequency range | Test Receiver/Spectrum Setting  | Detector |
|----------------------|---|----------|
| 1GHz-40GHz           | Peak Value: RBW=1MHz/VBW=3MHz,<br>Sweep time=Auto<br>Average Value: RBW=1MHz/VBW=10Hz,<br>Sweep time=Auto | Peak     |

##### LIMIT

Below -20dB of the highest emission level in operating band.

Radiated emissions which fall in the restricted bands, as defined in § 15.205(a), must also comply with the radiated emission limits specified in § 15.209(a)

## **TEST RESULTS**

### **4.6.1 For Conducted at Restricted Band Measurement**

For reporting purpose only.

Please refer to Appendix A.8.

### **4.6.2 For Conducted Bandedge Measurement**

For reporting purpose only.

Please refer to Appendix A.6.

### **4.6.3 For Conducted Spurious Emissions Measurement**

For reporting purpose only.

Please refer to Appendix A.7.

## 4.8. Antenna Requirement

### Standard Applicable

For intentional device, according to FCC 47 CFR Section 15.203, an intentional radiator shall be designed to ensure that no antenna other than that furnished by the responsible party shall be used with the device. And according to FCC 47 CFR Section 15.247 (c), if transmitting antennas of directional gain greater than 6dBi are used, the power shall be reduced by the amount in dB that the directional gain of the antenna exceeds 6dBi.

### Test Result

The antenna used for this product is Metal Antenna and that no antenna other than that furnished by the responsible party shall be used with the device, the maximum peak gain of the transmit antenna is only 2.93dBi.

Reference to the **Internal photos**.

## 5. TEST SETUP PHOTOS OF THE EUT

Adapter: TPA-46B050100UU

Photo of Radiated Emissions Measurement



Fig. 1

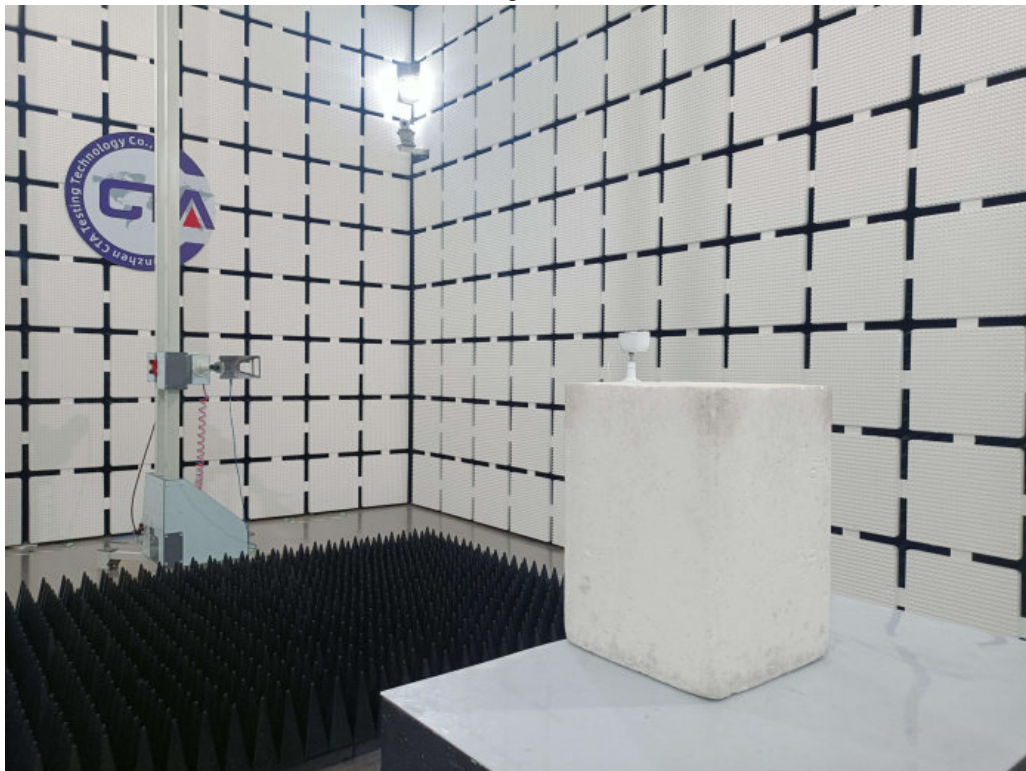


Fig. 2



Photo of Conducted Emission Measurement



Fig. 3

**Adapter:DCT07W050100US-C1**

Photo of Radiated Emissions Measurement



Fig. 1

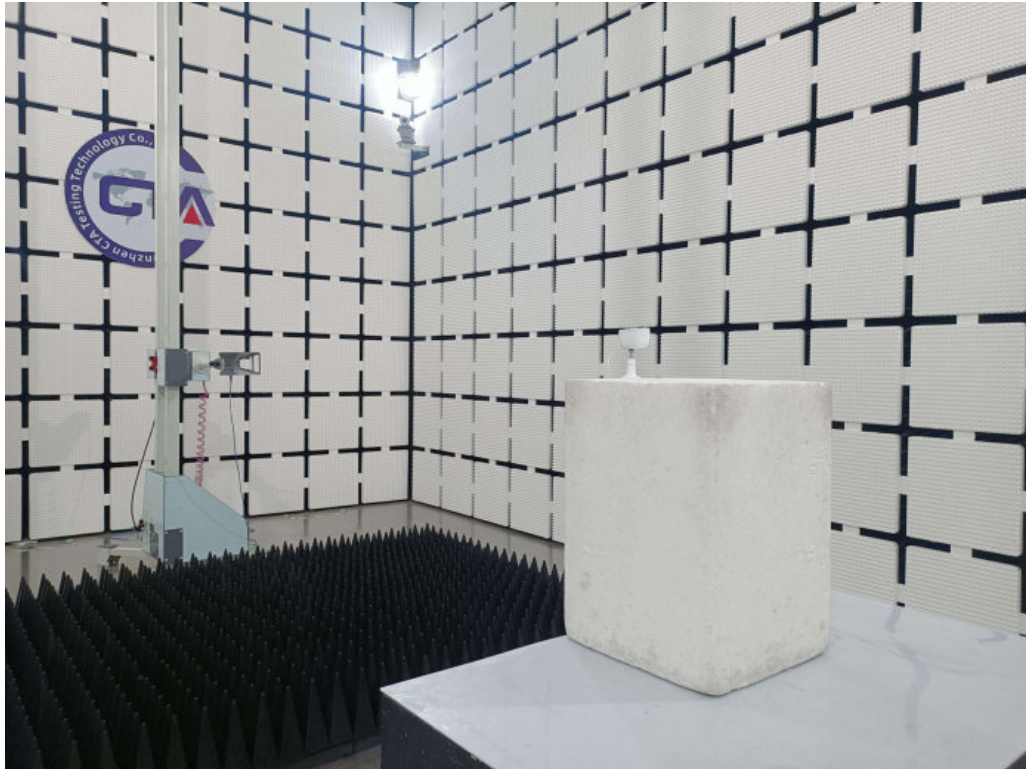


Fig. 2

Photo of Conducted Emission Measurement



Fig. 3

## 6. EXTERNAL AND INTERNAL PHOTOS OF THE EUT



Fig. 1



Fig. 2





Fig. 3



Fig. 4



Fig. 5



Fig. 6





Fig. 7



Fig. 8



Fig. 9

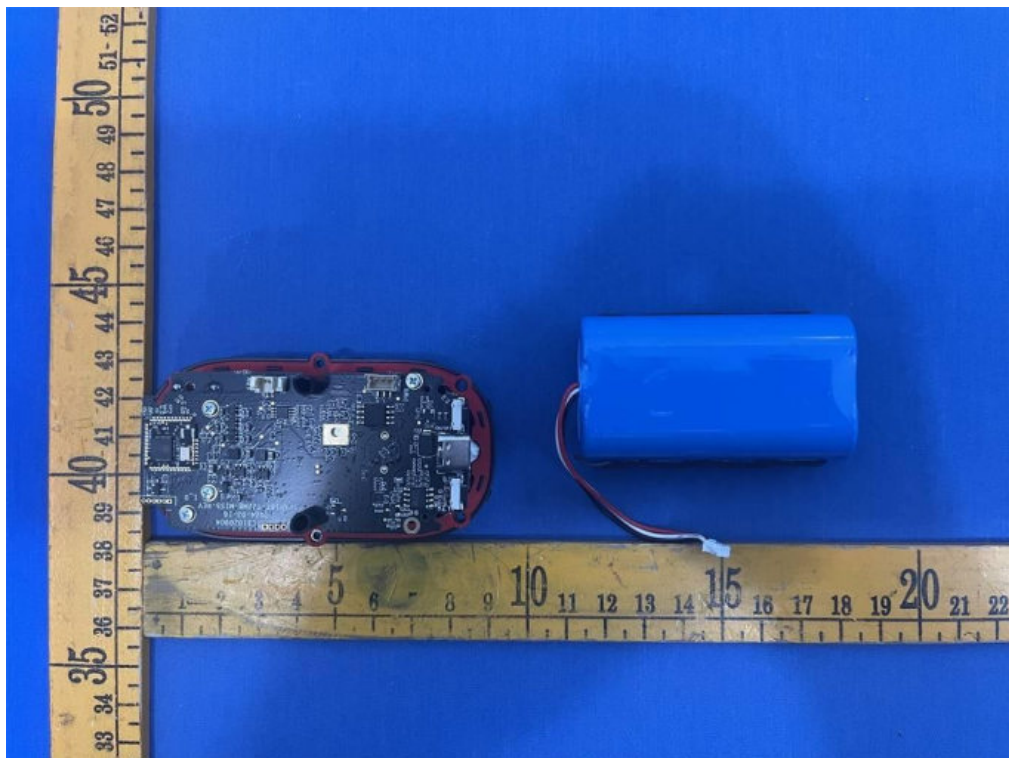


Fig. 10



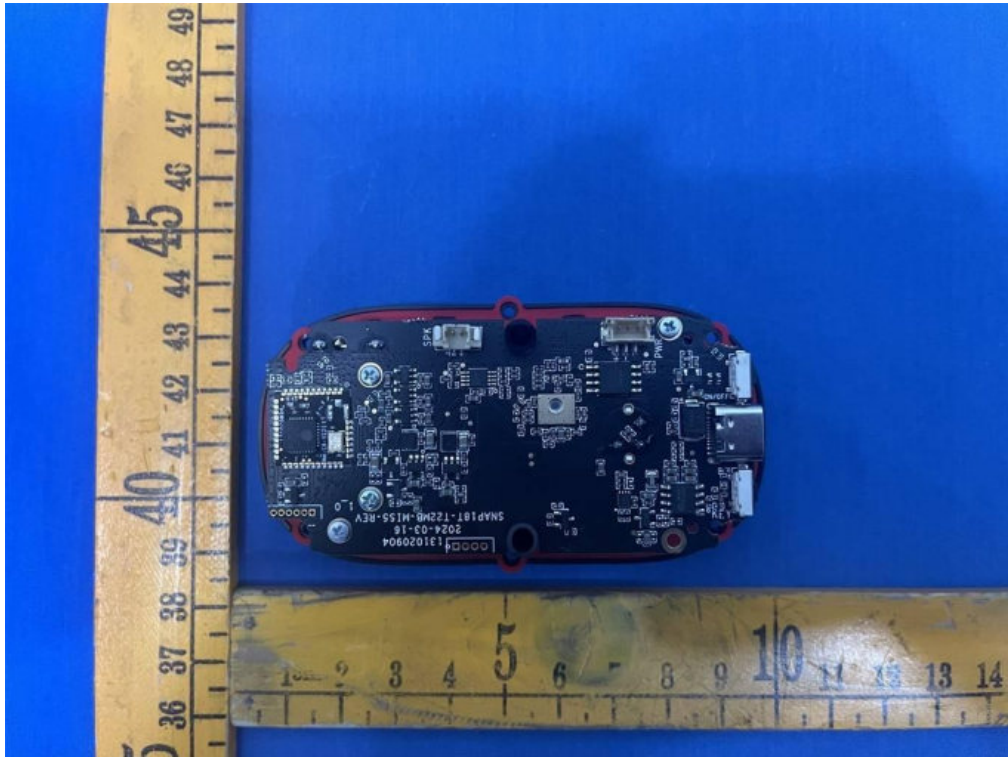


Fig. 11

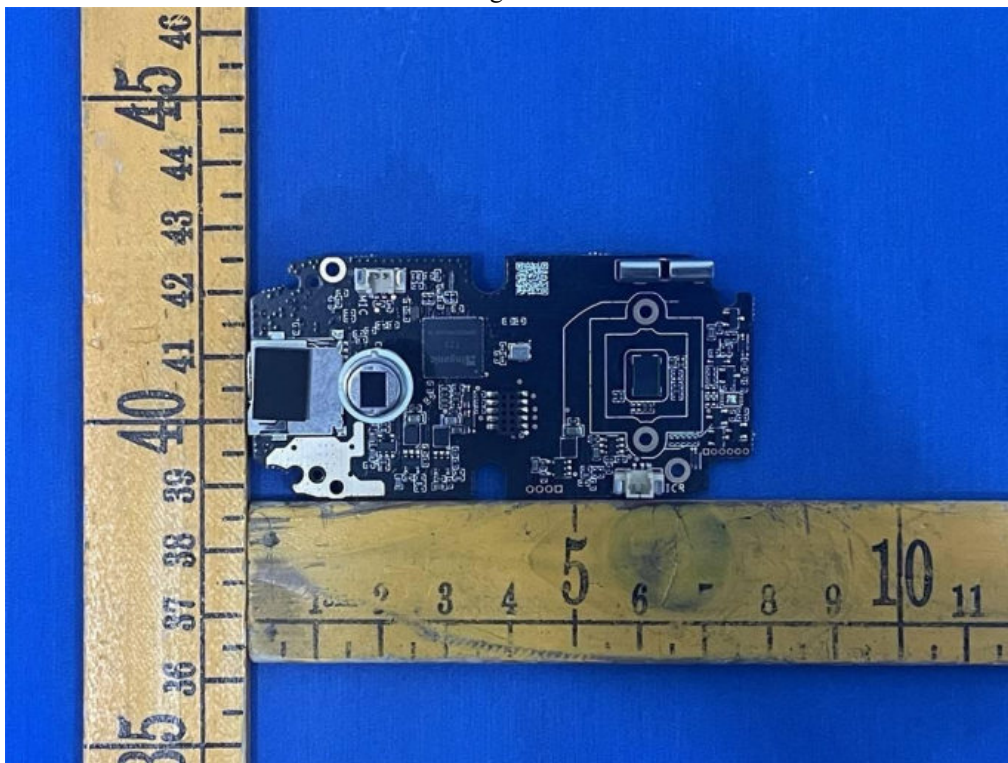


Fig. 12



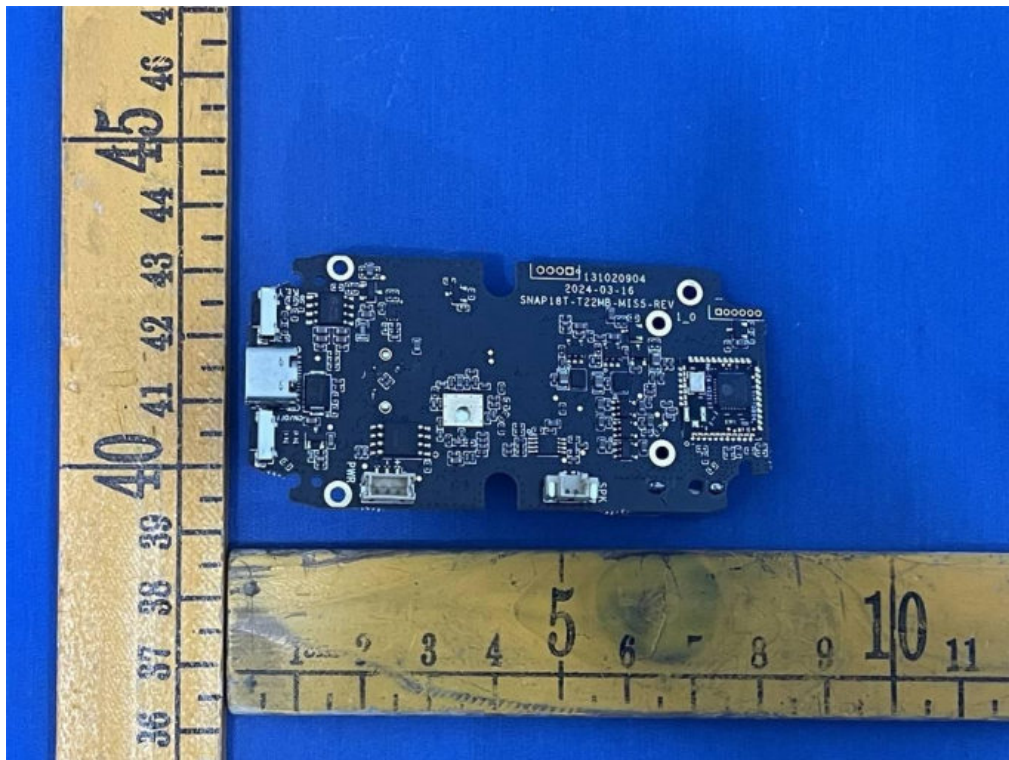


Fig. 13

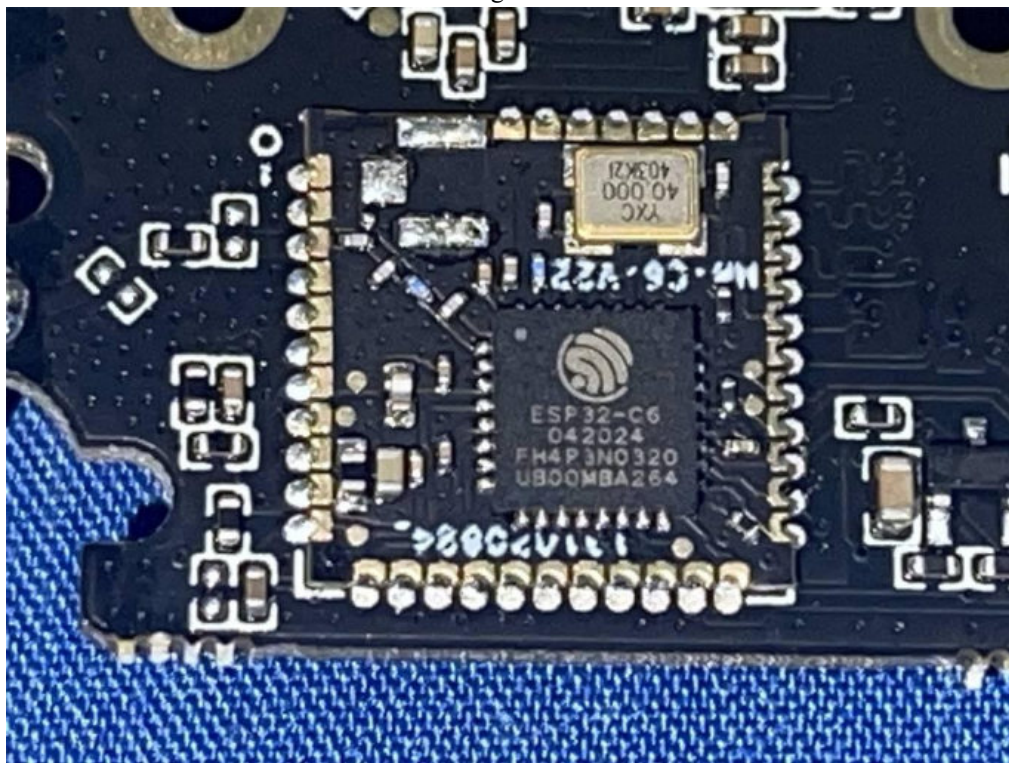


Fig. 14



Fig. 15

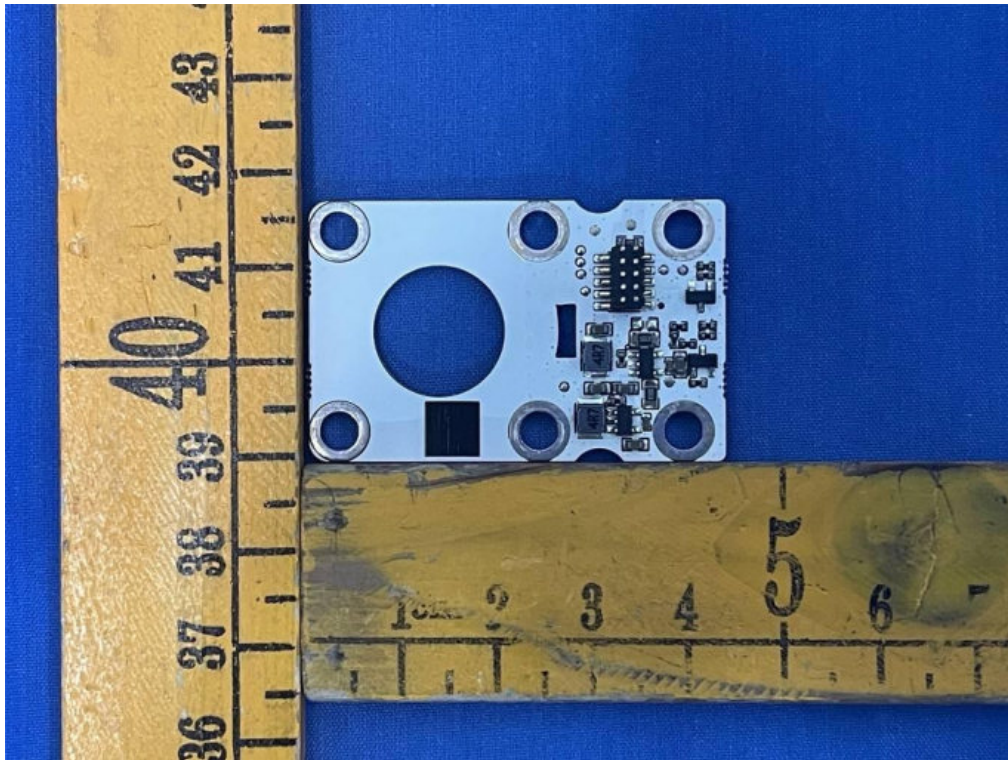


Fig. 16



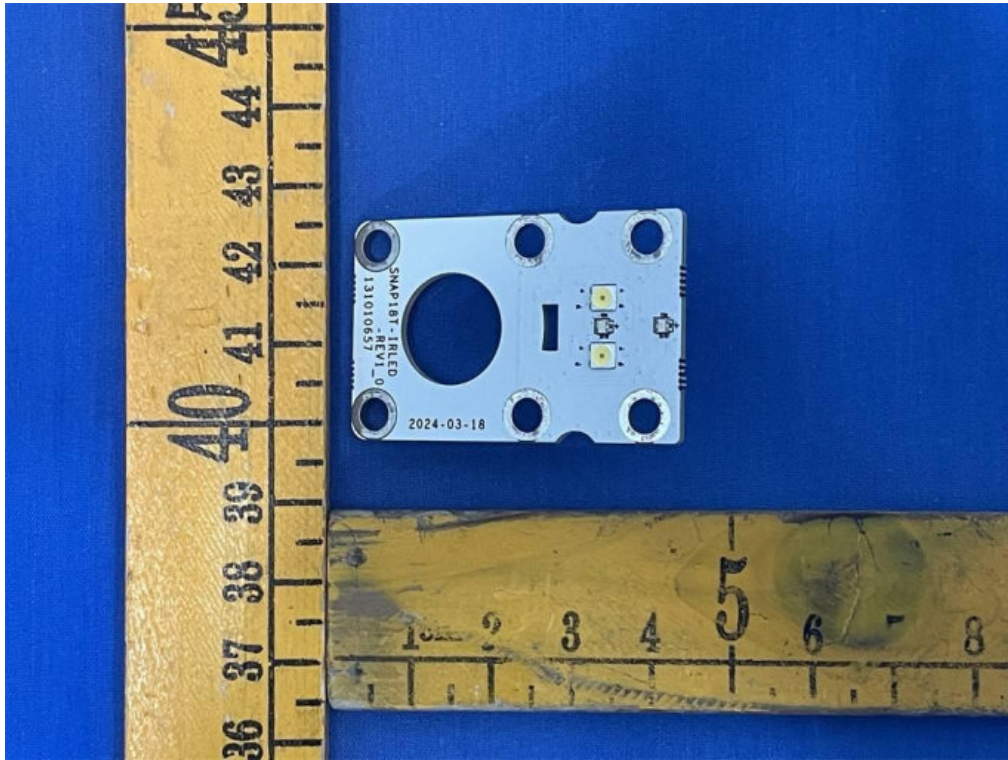


Fig. 17

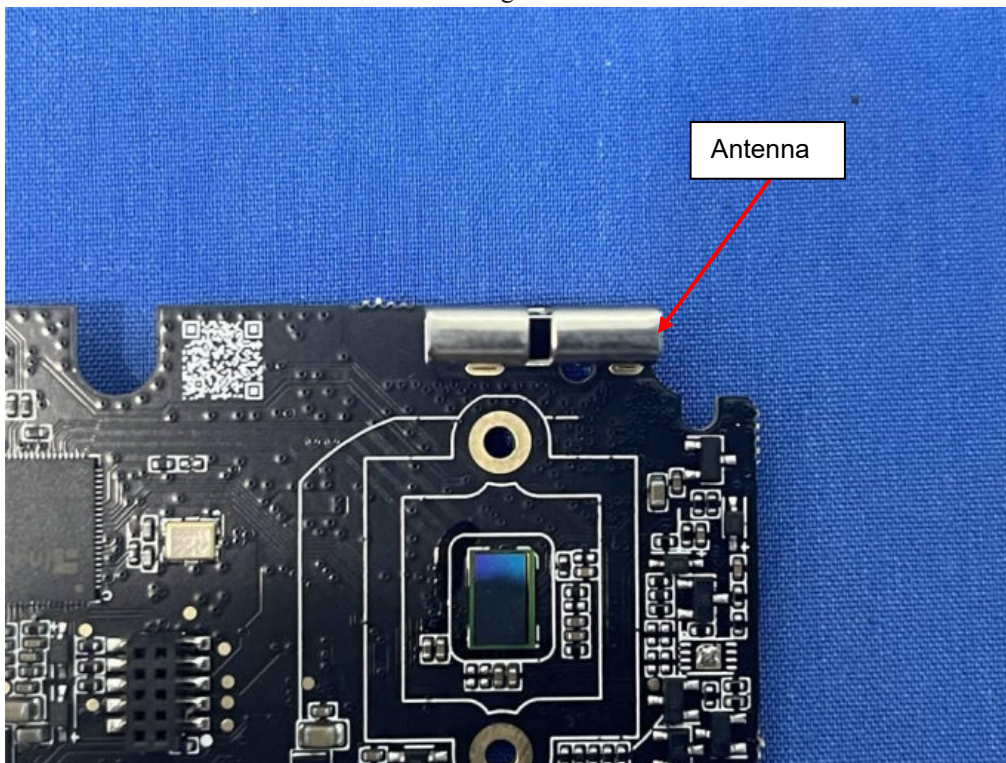


Fig. 18

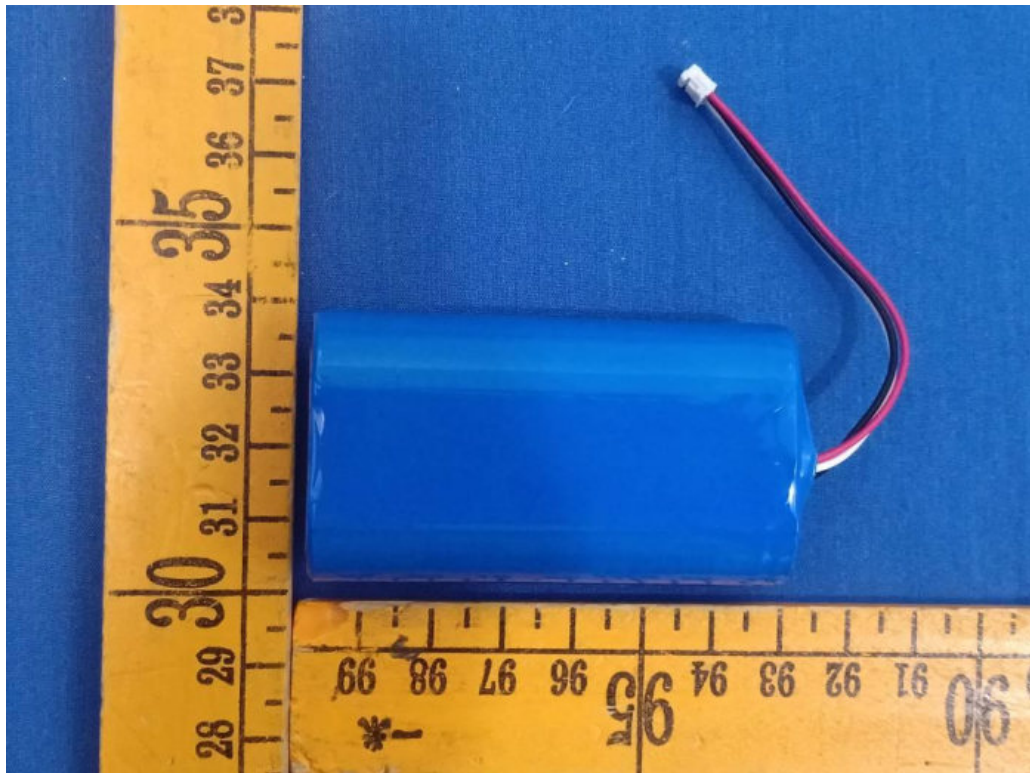


Fig.19

.....End of Report.....