



AmazonBasics 6-Button 2.4GHz & Bluetooth Wireless Mouse - Black

Model: B1T, B1T-B01, B08P6NDDGZ

PRODUCT GUIDE

FCC COMPLIANCE STATEMENT:

This device complies with part 15 of the FCC Rules. Operation is subject to the following two conditions.
(1) This device may not cause harmful interference, and
(2) this device must accept any interference received, including interference that may cause undesired operation.

Note: This equipment has been tested and found to comply with the limits for a Class B digital device, pursuant to Part 15 of the FCC Rules. These limits are designed to provide reasonable protection against harmful interference in a residential installation. This equipment generates, uses and can radiate radio frequency energy and, if not installed and used in accordance with the instructions, may cause harmful interference to radio communications. However, there is no guarantee that interference will not occur in a particular installation. If this equipment does cause harmful interference to radio or television reception, which can be determined by turning the equipment off and on, the user is encouraged to try to correct the interference by one or more of the following measures: Reorient or relocate the receiving antenna. Increase the separation between the equipment and receiver. Connect the equipment into an outlet on a circuit different from that to which the receiver is connected.

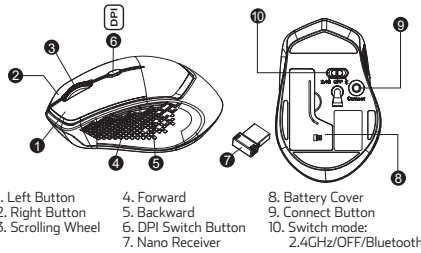
Consult the dealer or an experienced radio/TV technician for help.
Warning: Changes or modifications to this unit not expressly approved by the part responsible for compliance could void the user's authority to operate the equipment.
FCC Radiation Exposure Statement
The product complies with the FCC portable RF exposure limit set forth for an uncontrolled environment and is safe for intended operation as described in this manual. The further RF exposure reduction can be achieved if the product can be kept as far as possible from the user's body or set the device to lower output power if such function is available.

IC Notice:

This device complies with Canada Industry licence-exempt RSS standard(s). Operation is subject to the following two conditions:
(1) this device may not cause interference, and
(2) this device must accept any interference, including interference that may cause undesired operation of the device.
CAN ICES-3 (B)

Le présent appareil est conforme aux CNR d'Industrie Canada applicables aux appareils radio exempts de licence. L'exploitation est autorisée aux deux conditions suivantes :
(1) l'appareil ne doit pas produire de brouillage; (2) l'utilisateur de l'appareil doit accepter tout brouillage radioélectrique subi, même si le brouillage est susceptible d'en compromettre le fonctionnement.
NMB-3 (B)

Getting to know your bluetooth mouse



Forward

Press this button to view the next page in your Internet browser.

Backward

Press this button to view the previous page in your Internet browser.

DPI Switch Key

a) 5 adjustable DPI settings.

The number of blinks indicates the DPI setting in use

DPI	# of Blinks
600 dpi	1
1200 dpi	2
1600 dpi	3
2400 dpi	4
3600 dpi	5

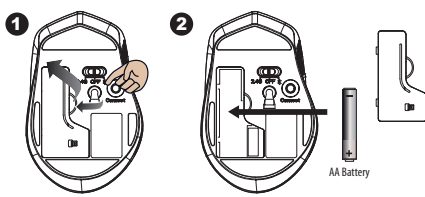
b) Default is 1600 DPI

Technical Data

- Operation voltage: 1.5V
- Operating Systems:
 - 2.4GHz - Microsoft Windows 7/8/10, Mac OS 10.5 or newer version
 - Bluetooth - Microsoft Windows 10, Mac OS 10.10 or newer version
- 5 adjustable sensitivity levels: 600/1200/1600/2400/3600
- 6 Clickable buttons
- USB plug and play
- Working distance: 8-10 meter in open space
- Battery life: 4-5 month (Battery life may vary depending on user and computing conditions) To prolong battery life, turn off when not in use.

Installing the batteries

Insert the battery with the correct position according to the instruction labeled on the mouse.

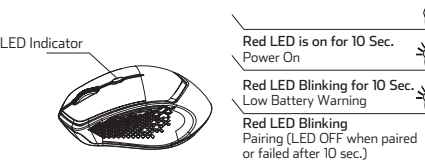


Instruction-2.4GHz mode

Plug USB connector into USB port on your computer

Help with set up under 2.4GHz mode

When not working, pair mouse and receiver
1. Re-plug receiver into USB port on computer
2. Press the connect button on mouse (Keep mouse close to receiver)
3. If it does not work after 10 seconds, repeat steps 1 and 2.



2

Instruction - Bluetooth mode

Windows OS 10 or up

1. Press the "Windows" button to go into Computer.
2. Click the Bluetooth icon on the task bar and then click "Add a Bluetooth Device".



3. Go into PC Setting.



3

4. Press the CONNECT button on mouse.
5. Click "Add a device" then select "BT5.1 Mouse".



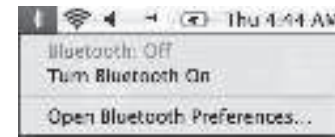
6. Selected setting will show paired or connected when pairing is successful.



4

MAC OS 10.10 or up

1. Click Bluetooth icon on your desktop or in the system bar, then select "Turn Bluetooth On".



2. Select "Set up Bluetooth device".



3. The "Bluetooth Setup Assistant" tab will appear. Please follow the instructions and click "continue".

4. Select "Mouse" then click "continue", press the "connect" button on mouse.

5

5. Select specific mouse then press "continue".



6. The computer is pairing with mouse. Press "continue".

7. Your Bluetooth mouse is setup click "Quit" to exit the tab.

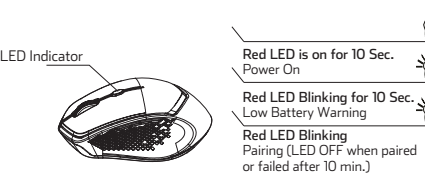


6

Help with set up under Bluetooth mode

When not working, repair by following previous steps

The Bluetooth mouse can work in 5.1 Bluetooth environment. Before connecting your Bluetooth mouse with your computer, make sure your computer has a working Bluetooth configuration with Human Interface Device (HID) profile. If your computer does not support Bluetooth 5.1, you need to obtain and install a commercially available Bluetooth dongle which converts your computer to a Bluetooth environment.



7