

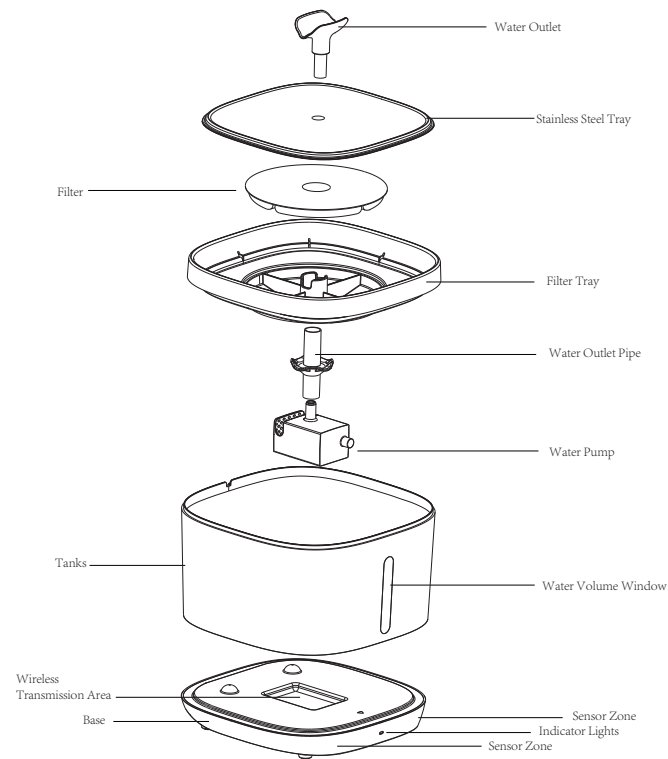
用户手册

宠物饮水器-PTM-633

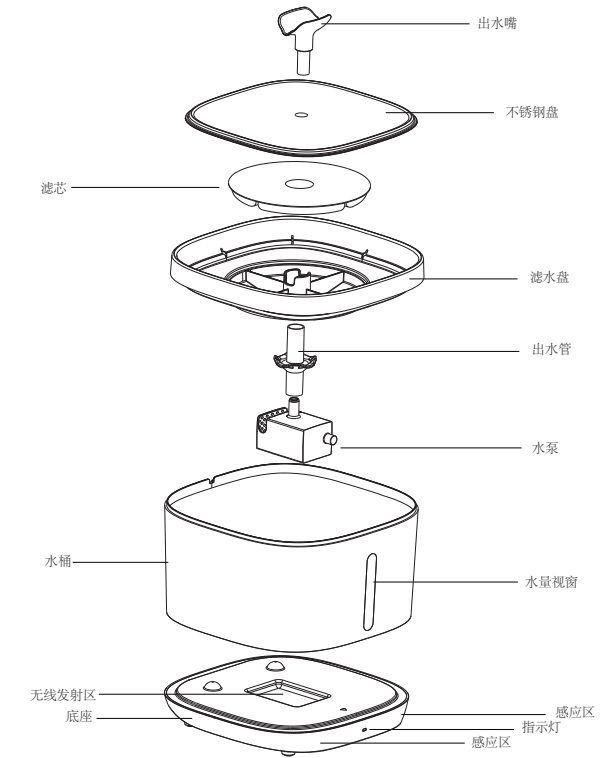
User Manual

Smart Pet Water Fountain-PTM-633

Product Description



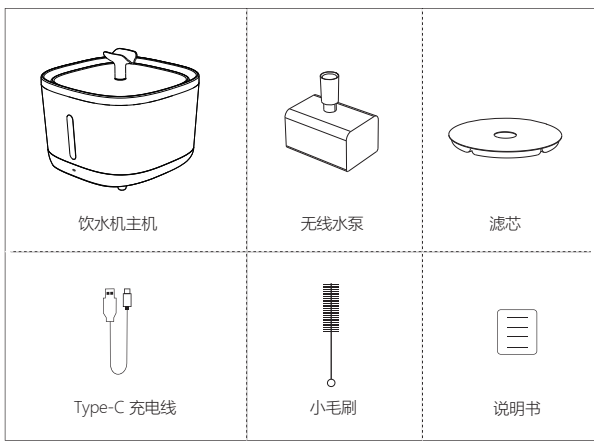
产品介绍



产品参数

名称	智能宠物饮水机
型号	PTM-633
尺寸	192*192*160mm
电池	5000mAh
额定电压/电流	5V/1A
额定功率	5W
容量	3L
材质	SUS304+ABS

产品包含



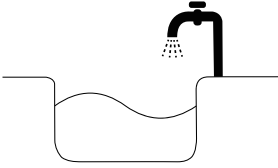
安装步骤

步骤一 清洗部件

1. 安装或者更换滤芯前, 请将滤芯在清水中浸泡5分钟, 将其冲洗干净 (去除活性炭在加热过程中产生的碳沫)
2. 用干净的水冲洗不锈钢盘, 滤水盘, 水泵, 水桶, 出水嘴, 出水管。

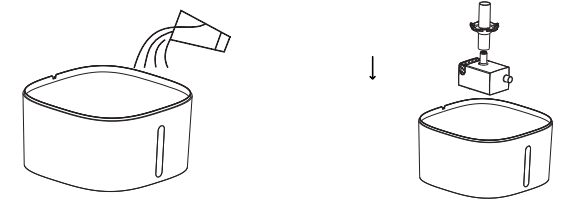
注意:

请不要把饮水机底座直接水洗
请勿使用50度以上的水
请勿把饮水机放置洗碗机或者消毒柜

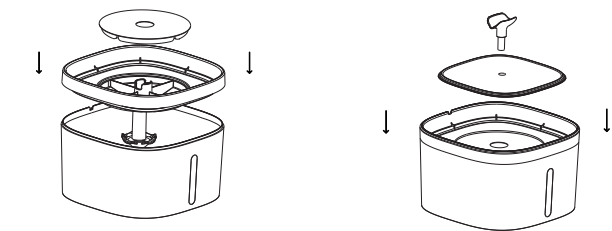


步骤二 组装产品

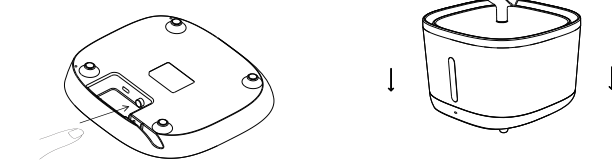
1. 将干净的饮用水倒入饮水机桶里, 请不要超过最大水位线
2. 把水泵和出水管按图指示放入桶里, 底部有限位, 放平为正确。



3. 按图指示放上滤水盘, 再放上滤芯
4. 按图指示放上不锈钢盘, 再插入出水嘴



5. 把饮水机底座翻到背面, 按一下橘色开关, 机器正式开机, 首次使用电池会有60%的电量。
6. 最后把饮水机放置底座上即可使用。



注意: 每次拿起滤水盘时如果水泵也一起连起来的话, 再安装回去要参考组装第2步, 先放水泵和出水管, 再依次放滤水盘, 滤芯, 不锈钢盘, 出水嘴。不然有可能装配不到位影响喂水器出水。

功能介绍

开关机:

1. 机器底部橘色按钮按下灯亮为开机, 再按一下按键弹起灯熄灭为关机。

插电使用:

1. 翻转饮水机底座, 将Type-C数据线插入电源口, 另一端插入适配器, 接通电源, 按下电源按钮就可以开始使用了。
- * 当不方便使用数据线时, 请拔出数据线, 纯电池使用为感应出水模式。

出水模式:

1. Type-C供电时: 间歇出水模式+感应出水模式 (出水10分钟, 停水1分钟) 如果宠物在停水区间来喝水的话, 机器会启动雷达感应模式出水40S。
2. 纯电池供电: 感应出水模式, 检测到宠物来喝水会出水40S, 定时60分钟会固定出水一次40S。

指示灯说明:

1. Type-C供电时: 充电白灯呼吸, 满电白灯长亮
2. 纯电池供电: 出水时白灯长亮, 不出水时会熄灭, 出水时白灯长亮电池电量充足, 红灯闪烁电量低于20%

维护与清洁

I. 日常节保养

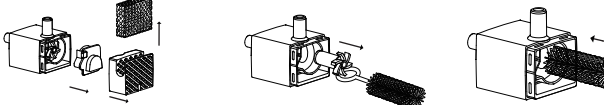
1. 清洁前请断开电源并关闭产品。
2. 端起饮水口水桶, 底座不能水洗。
3. 将水桶, 不锈钢盘, 滤水盘, 出水嘴, 出水管, 放入水中清洗干净。
4. 请勿将饮水机底座浸泡水中, 也不要放入洗碗机中。
5. 建议每3天换一次饮用水, 换水前请清洗产品。

II. 更换滤芯和水泵海绵

1. 建议每15天更换一次滤芯, 更换滤芯前, 请先用清水浸泡5分钟, 再用清水冲洗, 去除活性炭在运输过程中产生的粉末。
2. 建议每15天更换一次水泵海绵。
3. 为了您的宠物健康, 请及时更换滤芯。

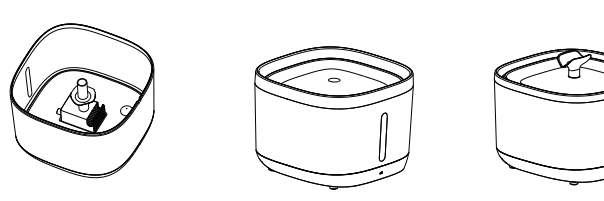
III. 水泵的清洁和保养

1. 打开水泵盖子
2. 把马达里面的叶轮转子用毛刷后面的钩子取出来
3. 用毛刷清洗水泵和叶轮



组装时注意事项

- 第一步 先放入水泵+出水管
- 第二步 放滤水盘+滤芯+不锈钢盘
- 第三步 放出水嘴



注意事项

1. 此饮水机建议3个月以上的宠物使用。
2. 本饮水机仅设计用于室内使用, 避免放在阳光直射的地方, 内置锂电池远离任何潜在的火源。
3. 请使用本产品提供的适配器给饮水机供电。使用任何其他适配器都可能导致机器故障或者损坏。
4. 因操作不当造成的机器损坏不在保修范围内。
5. 为了防止宠物碰撞饮水机, 建议将它靠墙放置或放置在安全的位置。
6. 请勿用水冲洗或者浸泡饮水机底座。
7. 请勿用热水清洗或者在消毒柜中清洗饮水机底座。
8. 请定期更换滤芯, 并彻底清洗水泵。
9. 节假日外出时, 请确保饮水机主机充满电, 并检查剩余水位。
10. 本产品不是玩具, 请不要让小孩玩。
11. 请将检测探头对准宠物饮水的方向。
12. 无线发射区不能放置金属物体。

常见问题解答

1. 饮水机不工作
答: 1. 水泵可能堵塞, 请彻底清洗, 或者水管连接不紧, 请重新插一下。
2. 请确认下水泵是否装配到位, 不管任何时候清洗饮水机或者水泵, 最后组装时都要先放水泵和出水管, 确认放好后再放滤水盘等。
2. 饮水机红色指示灯亮起
答: 表示水泵没有水了或者不够最低水位。也有可能要将水泵拆开进行彻底清洗。
3. 插入Type-C充电器后, 充电指示灯不亮
答: 检查充电器是否与墙壁插座完全接触, 确保电源连接良好。
4. 噪音增加, 出水减少?
答: 请夹出叶轮彻底清洗水泵。
5. 感应失灵
答: 请保证感应区面朝宠物。

How to Install

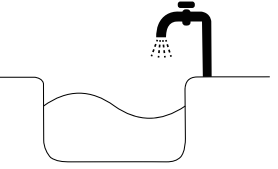
Step 1 Cleaning Parts

1. Before installing or replacing the filter, rinse the filter by soaking it in water for 5 minutes (to remove carbon foam produced during the heating process of the activated carbon).

2. Rinse the stainless steel tray, water filter tray, and pump with clean water.

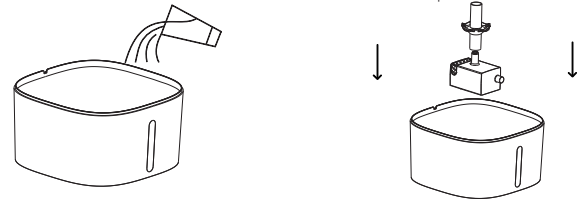
Note:

Please do not wash the water dispenser main unit directly in the water
Do not use water above 50 degrees
Do not put the main unit in the dishwasher or sterilizer

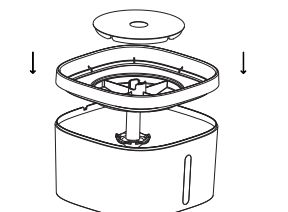


Step 2 Assemble the Product

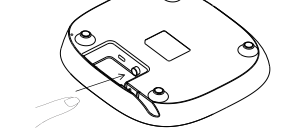
1. Pour clean drinking water into the stainless steel tank, please do not exceed the maximum water level line.
2. Put the water pump and the outlet pipe into the tank according to the instructions in the picture, the bottom of the limit, put the level is correct.



3. According to the instructions on the water filter tray, and then put on the filter.



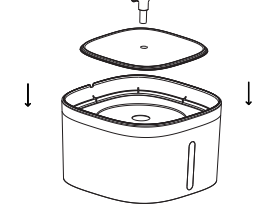
5. Turn the water fountain base to the back, press the orange switch, the machine is officially switched on, the first time you use the battery will be 60% charged.



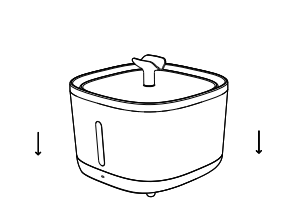
Note:

Every time you pick up the water filter tray, if the water pump is also connected together, then install it back to refer to step 2 of the assembly, put the water pump and outlet pipe first, then put the water filter tray, filter, stainless steel disc, and outlet nozzle in turn. Otherwise, there is a possibility that the assembly is not in place to affect the water coming out of the feeder.

4. Put the stainless steel tray according to the instructions in the picture, and then insert the spout.



6. Finally, place the water fountain on the base to use.



Function

On/Off Button:

1. The orange button at the bottom of the machine presses the light on for switching on, press the button again to pop up the light off for switching off.

Plugged in for Use:

1. Flip over water fountain base, insert the Type-C cable into the power port, and the other end into the adapter, turn on the power and press the power button to start using it.

*When it is not convenient to use the data cable, please pull out the data cable to cover the silicone plug to pull out the data cable pure battery use, pure battery use for the induction water mode.

Water Discharge Mode:

1. Type-C power supply: intermittent water discharge mode + induction water discharge mode (10 minutes of water discharge, 1 minute of water stop) If the pet comes to drink water in the water stopping zone, the machine will start the radar induction mode to discharge water for 40s.
2. Pure battery-powered: sensor water mode, detecting the pet to drink water will be out of water 40s, timed 60 minutes will be fixed out of water once 40s.

Indicator Light Instructions:

1. Type-C power supply: charging white light breathing, fully charged white light long bright
2. Pure battery power supply: white light is on when the water comes out, it will go out when the water does not come out, white light is on when the water comes out, the battery is fully charged, the red light is blinking with less than 20% of the battery power.

Maintenance and Cleaning

Daily Cleaning & Maintenance

1. Disconnect the power supply and switch off the product before cleaning.
2. Pick up the water fountain tank, the base can not be washed.
3. Put the tank, stainless steel tray, water filter tray and spout into the water to clean.
4. Please do not immerse the main unit of the water fountain in water or put it in the dishwasher.
5. It is recommended to change the drinking water every 3 days, please clean the product before changing the water.

Replace the filter element and pump sponge

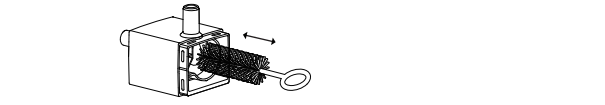
1. It is recommended to replace the filter every 15 days. Before replacing the filter, please soak it in water for 5 minutes, then rinse it with water to remove the powder produced by the activated carbon during transport.
2. It is recommended to replace the water pump sponge every 15 days.
3. Please replace the filter in time for your pet's health.

Cleaning and Maintenance of Water Pump

1. Open the water pump cover.
2. Take out the impeller rotor inside the motor with the hook behind the brush.

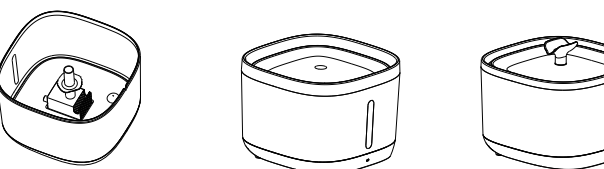


3. Clean the water pump and impeller with the brush.



Precautions for Assembly

- Step 1 Put in the water pump + outlet pipe first
- Step 2 Put the water filter tray + f. ilter + stainless steel tray
- Step 3 Release the spout



Caution

1. This dispenser is recommended for pets over 3 months old.
2. This water fountain is designed for indoor use only, avoid placing it in direct sunlight and keep it away from any potential ignition sources.
3. Please power the water fountain with the adapter provided with this product. Using any other adapter may cause the fountain to malfunction or be damaged.
4. The warranty does not cover damage to the machine caused by improper operation.
5. To prevent pets from knocking over the water fountain, placing it against a wall or in a safe location is recommended.
6. Do not rinse or soak the main unit of the water fountain with water.
7. Do not wash it in hot water or a sterilizer.
8. Please change the filter regularly and clean the pump thoroughly.
9. When you go out on holidays, please make sure the main unit of the water fountain is fully charged and check the remaining water level.
10. This product is not a toy, please do not let children play.
11. Please point the detection probe in the direction of your pet's drinking water.
12. No metal objects can be placed in the wireless transmitting area.

Troubleshooting

1. Water fountain does not work
A: 1. The water pump may be clogged, please clean it thoroughly, or if the water pipe connection is not tight, please re-insert it.
2. Please make sure that the water pump is assembled in place. No matter any time you clean the water fountain or the water pump, when you finally assemble it, you should put the water pump and the outlet pipe first, and make sure that you put it in place before you put the water filter tray and so on.
2. Water fountain red indicator light on
A: It means that the water pump is out of water or not enough for the minimum water level. It is also possible that the pump should be disassembled for thorough cleaning.
3. After plugging in the Type-C charger, the charging indicator does not light up
A: Check if the charger is in full contact with the wall socket to ensure a good power connection.
4. Noise increase, water out of the decrease?
A: Please clip out the impeller to clean the pump thoroughly.
5. Sensor malfunction
A: Please make sure the sensing area is facing your pet.

FCC Warning Statement

Changes or modifications not expressly approved by the party responsible for compliance could void the user's authority to operate the equipment. This equipment has been tested and found to comply with the limits for a Class B digital device, pursuant to Part 15 of the FCC Rules. These limits are designed to provide reasonable protection against harmful interference in a residential installation. This equipment generates uses and can radiate radio frequency energy and, if not installed and used in accordance with the instructions, may cause harmful interference to radio communications. However, there is no guarantee that interference will not occur in a particular installation. If this equipment does cause harmful interference to radio or television reception, which can be determined by turning the equipment off and on, the user is encouraged to try to correct the interference by one or more of the following measures:

- - Reorient or relocate the receiving antenna.
- - Increase the separation between the equipment and receiver.
- - Connect the equipment into an outlet on a circuit different from that to which the receiver is connected.
- - Consult the dealer or an experienced radio/TV technician for help.

FCC Radiation Exposure Statement

The antennas used for this transmitter must be installed to provide a separation distance of at least 20 cm from all persons and must not be co-located for operating in conjunction with any other antenna or transmitter.

This device complies with Part 15 of the FCC Rules. Operation is subject to the following two conditions:

- (1) This device may not cause harmful interference.
- (2) This device must accept any interference received, including interference that may cause undesired operation.