

fifine

X3 Wireless Headset

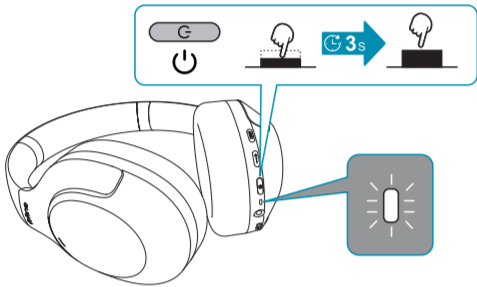
USER'S GUIDE



AS Version:24-V1

BLUETOOTH PAIRING

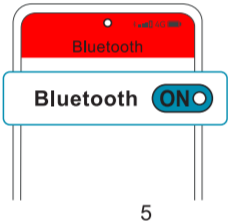
1.The indicator flashes white light quickly when the headphones is turned on for the first time, and the headphones automatically enters the Bluetooth pairing mode.



2.Open your media device and enter the settings.



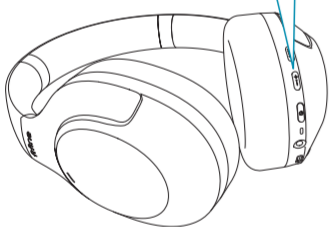
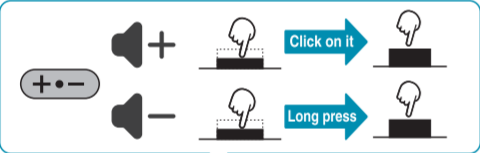
3. Turn on your phone's Bluetooth and search for the headphones.



5

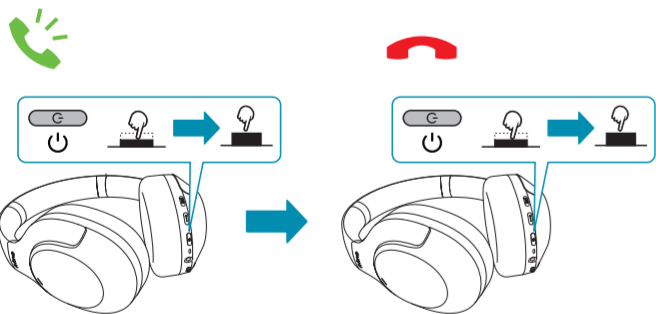
VOLUME CONTROL

1. Press the Volume Control to turn up the volume.
2. Press and hold the Volume Control to turn down the volume.



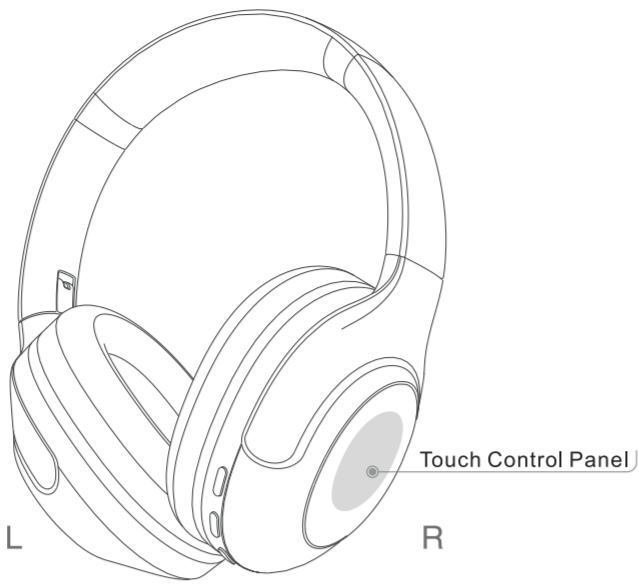
CALL ANSWERING

1. Make sure the headphones and mobile phone are connected. When a call comes in, press the Power button to answer it. When you finish the call, press the Power button again to end it.

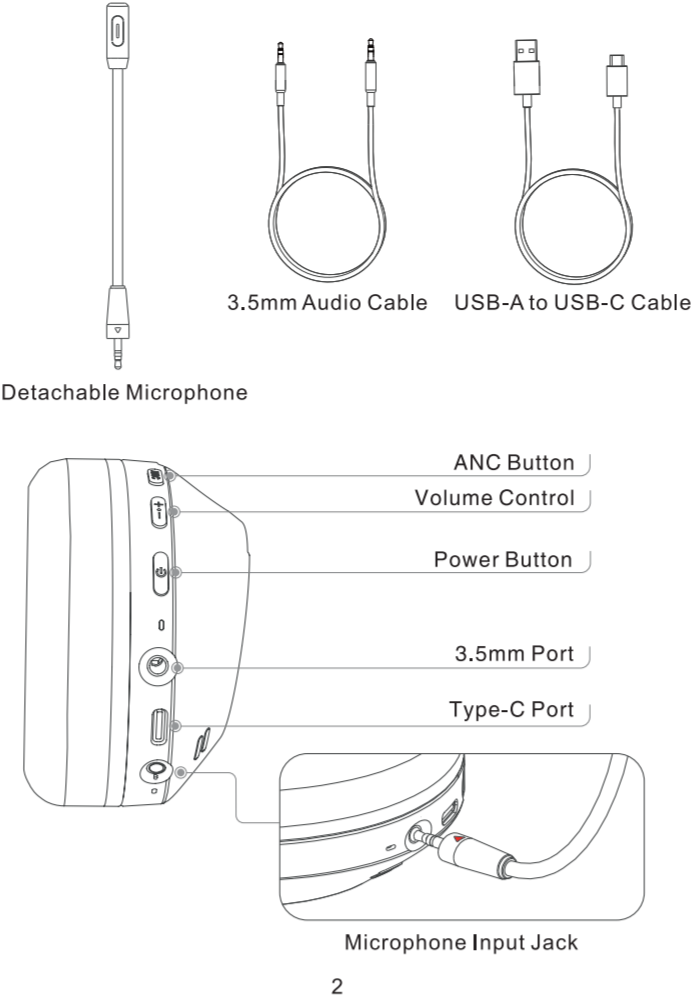


Dear Customer
Thank you for purchasing X3 Wireless Headphones!
To use this product properly and safely, please read this user's manual before using the unit.
After reading this document, be sure to keep it in a safe place where it can be referenced at any time.

WIRELESS NOISE CANCELING STEREO HEADPHONES



1

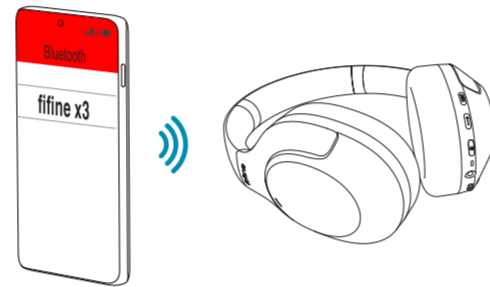


2

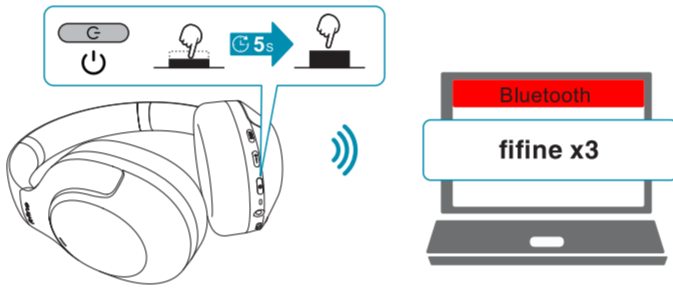
MULTI-POINT CONNECTION

The multi-point connection allows you to connect your headphones with two different devices via Wireless simultaneously.

1. After turning on the headphones, pair the headphones with the first device.



2. Turning off the headphones, press and hold the Power button for at least 5 seconds to turn on the headphones again and enter multi-point pairing mode, then pair the headphones with the second device.



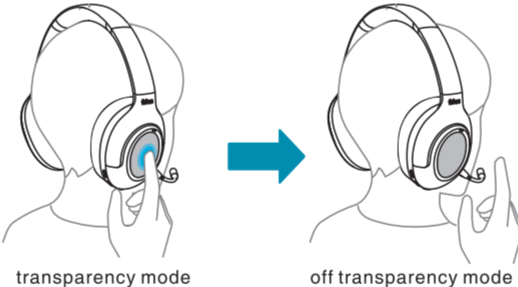
7

Transparency Mode:

Press and hold the ANC button until you hear the voice guidance saying "Transparency Mode" from the headphones. It will reduce the volume of the music and let you hear from your surroundings without taking off the headphones.

Temporary Transparency Mode:

When the headphones is connected, press and hold the Right Touchpad to turn on transparency mode. It will reduce the volume of the music and let you hear from your surroundings without taking off the headphones. Release the Right Touchpad to turn off transparency mode.



transparency mode

off transparency mode

Bass Mode:

When the headphones is connected and in the ANC on state, quickly tap the Right Touchpad twice to turn on / off the bass mode.



12

ISED Statement

English: This device contains licence-exempt transmitter(s)/receiver(s) that comply with Innovation, Science and Economic Development Canada's licence-exempt RSS(s). Operation is subject to the following two conditions:

- (1) This device may not cause interference.
- (2) This device must accept any interference, including interference that may cause undesired operation of the device.

The digital apparatus complies with Canadian CAN ICES-3 (B)/NMB-3(B).

French: Cet appareil contient des émetteurs/récepteurs exempts de licence qui sont conformes aux RSS exemptés de licence d'Innovation, Sciences et Développement économique Canada.

L'exploitation est soumise aux deux conditions suivantes :

- (1) Cet appareil ne doit pas provoquer d'interférences.
- (2) Cet appareil doit accepter toute interférence, y compris les interférences susceptibles de provoquer un fonctionnement indésirable de l'appareil.

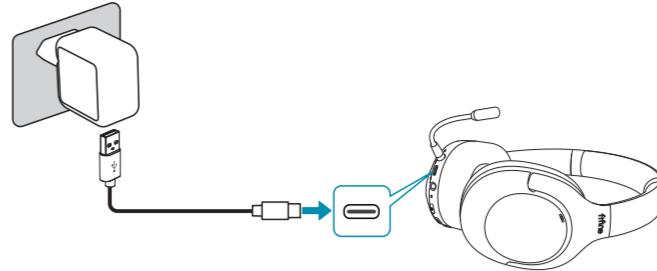
L'appareil numérique du ciem conforme canadien peut - 3 (b) / nmb - 3 (B).

This device meets the exemption from the routine evaluation limits in section 2.5.1 of RSS 102 and compliance with RSS 102 RF exposure, users can obtain Canadian information on RF exposure and compliance.

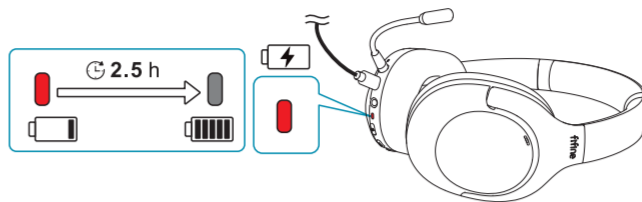
17

CHARGING

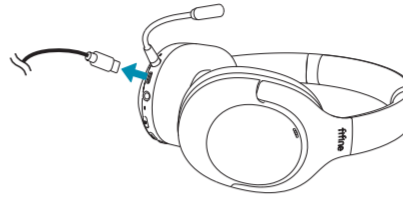
1. Connect the headphones to the PC or power adapter (5V, 1A) (sold separately) using the included cable, and turn on the power.



2. The indicator will light up and flash slowly in red. It takes 2.5 hours to charge from 0 to 100%. When fully charged, the indicator will turn white and stay on for 10 minutes before going out.

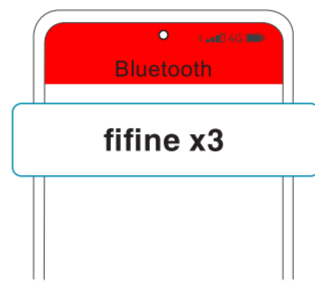


3. Unplug the USB cable.



3

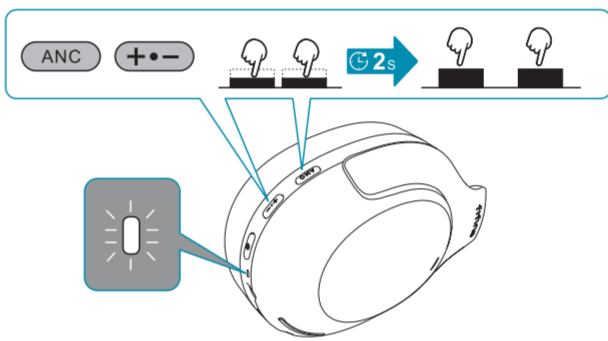
3.Reconnect to the first device by selecting the headphones from the Bluetooth device list.



4.Enjoy the convenience of the multi-point connection.

RESET BLUETOOTH SETTINGS

1. Press and hold the Volume button and ANC button for at least 3 seconds (white light stays on for 2 seconds).
2. All Bluetooth settings will be deleted.



8

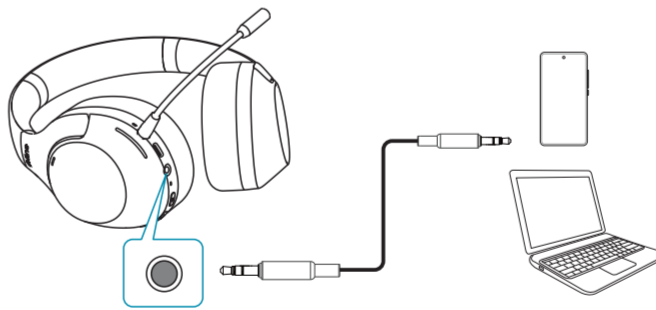
Gaming Mode:

When the headphones is connected, and the headphones is not in a call state, quickly tap the Right Touchpad three times to turn on the gaming mode. You will hear the voice guidance saying "Gameplay Mode" from the headphones.



CONNECTING TO OTHER AUDIO DEVICES WITH 3.5MM CABLE

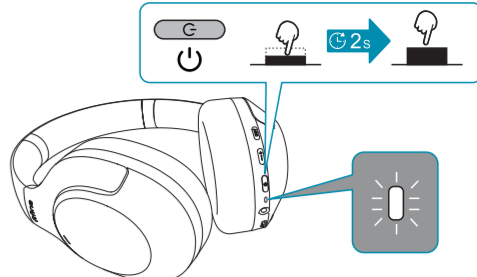
Use the included 3.5mm cable to connect the headphones to the device you like to play your audio.



13

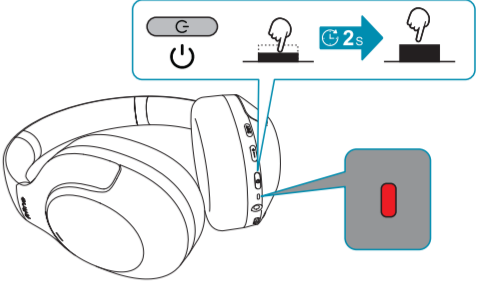
POWER ON

Press and hold the Power button for at least 2 seconds in power-off state, you will hear the voice guidance saying "Power ON" from the headphones, and the indicator will light up in white for 2 seconds and then flash continuously.



POWER OFF

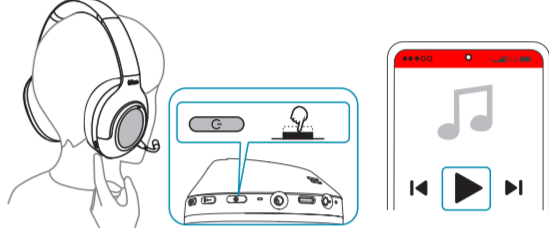
Press and hold the Power button for at least 2 seconds to turn off the power, the indicator will turn from white to red after 1 second, then turn off. You can hear the voice guidance saying "Power OFF" from the headphones.



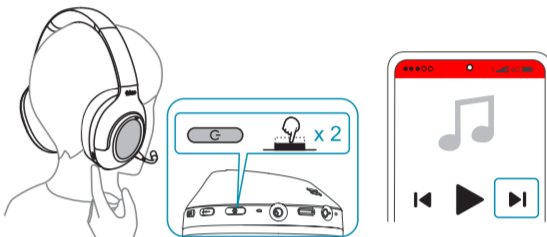
4

PLAYING

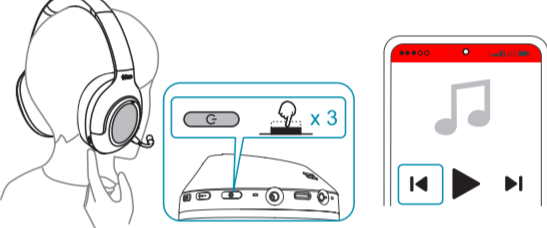
1. Make sure the headphones and media device are connected, then open the music app, press the Power button to play or pause the music.



2. Press the Power button two times to play the next song.



3. Press the Power button three times to play back the previous song.



9

SPECIFICATION

Model Number: X3
Connection Type: Wireless / 3.5mm
Frequency Range: 20 Hz ~ 20 kHz
Impedance: 32Ω±15%
Charging Voltage Range: DC 4.8-6.2V
Charging Electric Current: <450 mA
Battery Capacity: 600mAh
Usage hours: When connecting via the Wireless device
Music playback time: Max. 33 hours (100% volume)
Communication time: Max. 40 hours
Standby time: Max. 65 hours
Charging time: Approx. 2.5 hours
Operating temperature: 5 °C to 40 °C
Included items: Wireless Noise Canceling Stereo Headphones (1)
USB-A to USB-C Cable (1)
3.5mm Audio Cable (1)
Detachable microphone(1)

COMMUNICATION SPECIFICATION

Communication system: Wireless Specification version 5.3
Maximum communication range: Line of sight approx. 32.8ft / 10m
Frequency band: 2.4 Ghz band (2,400 Ghz - 2,4835 Ghz)
Compatible Bluetooth profiles: A2DP / AVRCP / HFP / HSP

14

WARRANTY

Every Fifine product comes with a Limited Warranty that in normal use of product will be free of any defects in material or workmanship for a period of one year from its original date of purchase. For detailed warranty info, please refer to the warranty policy on our website, or contact us directly.

CERTIFICATION

Eligible to bear CE Marking.
Authorized European Representative:
Name: AOCE INFORMATION TECHNOLOGY
Address: 61 rue de Lyon 75012 Paris France
Tel: +33-633297410
Authorized British Representative:
Name: AOCE LIMITED
Address: Office Suite 29a 3/F 23 Wharf Street, London, England, SE8 3GG
Tel: +44-759 7659 775



15

FCC Statement

This equipment has been tested and found to comply with the limits for a Class B digital device, pursuant to part 15 of the FCC Rules. These limits are designed to provide reasonable protection against harmful interference in a residential installation. This equipment generates, uses and can radiate radio frequency energy and, if not installed and used in accordance with the instructions, may cause harmful interference to radio communications. However, there is no guarantee that interference will not occur in a particular installation. If this equipment does cause harmful interference to radio or television reception, which can be determined by turning the equipment off and on, the user is encouraged to try to correct the interference by one or more of the following measures:

- Reorient or relocate the receiving antenna.
- Increase the separation between the equipment and receiver.
- Connect the equipment into an outlet on a circuit different from that to which the receiver is connected.
- Consult the dealer or an experienced radio/TV technician for help.

Caution: Any changes or modifications to this device not explicitly approved by manufacturer could void your authority to operate this equipment.

This device complies with part 15 of the FCC Rules. Operation is subject to the following two conditions:

- (1) This device may not cause harmful interference, and (2) this device must accept any interference received, including interference that may cause undesired operation.

RF Exposure Information

The device has been evaluated to meet general RF exposure requirement. The device can be used in portable exposure condition without restriction.

16

cet appareil est conforme à l'exemption des limites d'évaluation courante dans la section 2.5.1 du cnr - 102 et conformité avec rss 102 de l'exposition aux rf, les utilisateurs peuvent obtenir des données canadiennes sur l'exposition aux champs rf et la conformité.

This equipment complies with Canada radiation exposure limits set forth for an uncontrolled environment.

Cet équipement est conforme aux limites d'exposition aux rayonnements du Canada établies pour un environnement non contrôlé.

RF Exposure Statement

The device has been evaluated to meet general RF exposure requirement. The device can be used in portable exposure condition without restriction. L'appareil a été évalué pour répondre aux exigences générales d'exposition aux radiofréquences. L'appareil peut être utilisé en condition d'exposition portable sans restriction.

This equipment should be installed and operated with minimum distance 0mm between the radiator & your body.

Cet équipement doit être installé et utilisé à une distance minimale de 0mm entre le radiateur et votre corps.

18