

ANT Manufacturers: ANWEI commnuication Equipment Co.,Ltd
Address:2nd Floor, East Block, Building 5, Yifenghua Innovation Industrial Park,
Huaning Road, Dalang Street, Longhua District, Shenzhen City, Guangdong Province

规格书

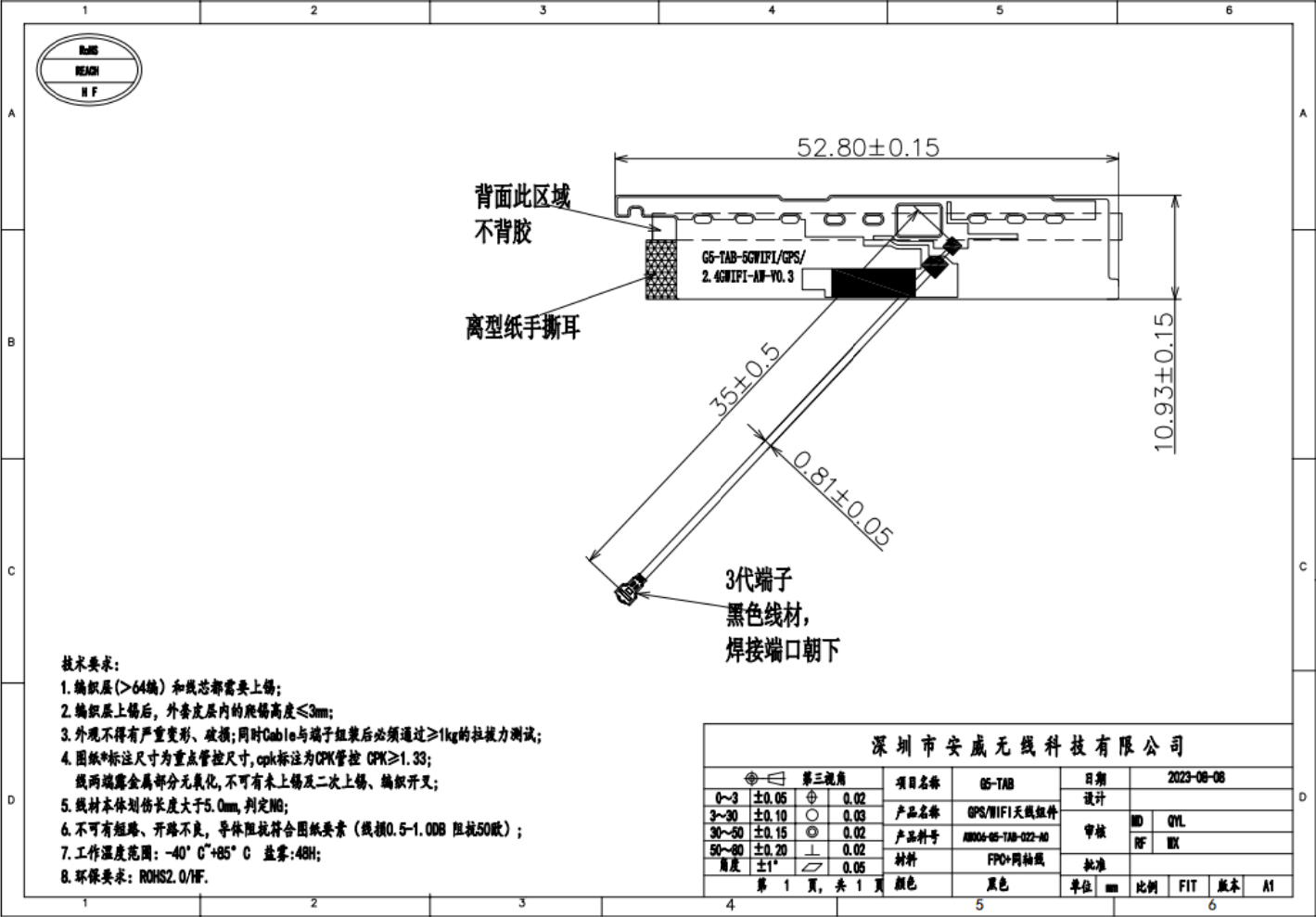
客户 Customer	Youmi	规格型号 Specs	G5 TAB
安威料号 Part Number	AW006-G5 TAB-021-A0 AW006-G5 TAB-022-A0 AW006-G5 TAB-023-A0	频 段 Frequency Band	BT&2.5G WIFI:2400~2483.5MHZ 5G WIFI:5100~5800MHZ GSM850/900/1800/1900 WCDMA1/2/4/5/6/8/19 CDMA BC0 BC1 BC10 B1.2.3.4.5.7.8.12.13.17.18.19.20.25.26.28.66.71 .34.38.39.40.41
颜 色 Color	black	版 本 Edition	REV:A0
销 售 Salesperson	Mr.Xie	设 计 Design	WUXI
结 构 Structure	QIN YUN LIN	确 认 Confirm	
日 期 Date	2023.8.7	签字日期 Signing Date	
客户确认 Customer confirmation:			
携手共进 共创未来 Join hands to create the future			

目录(Table of contents)

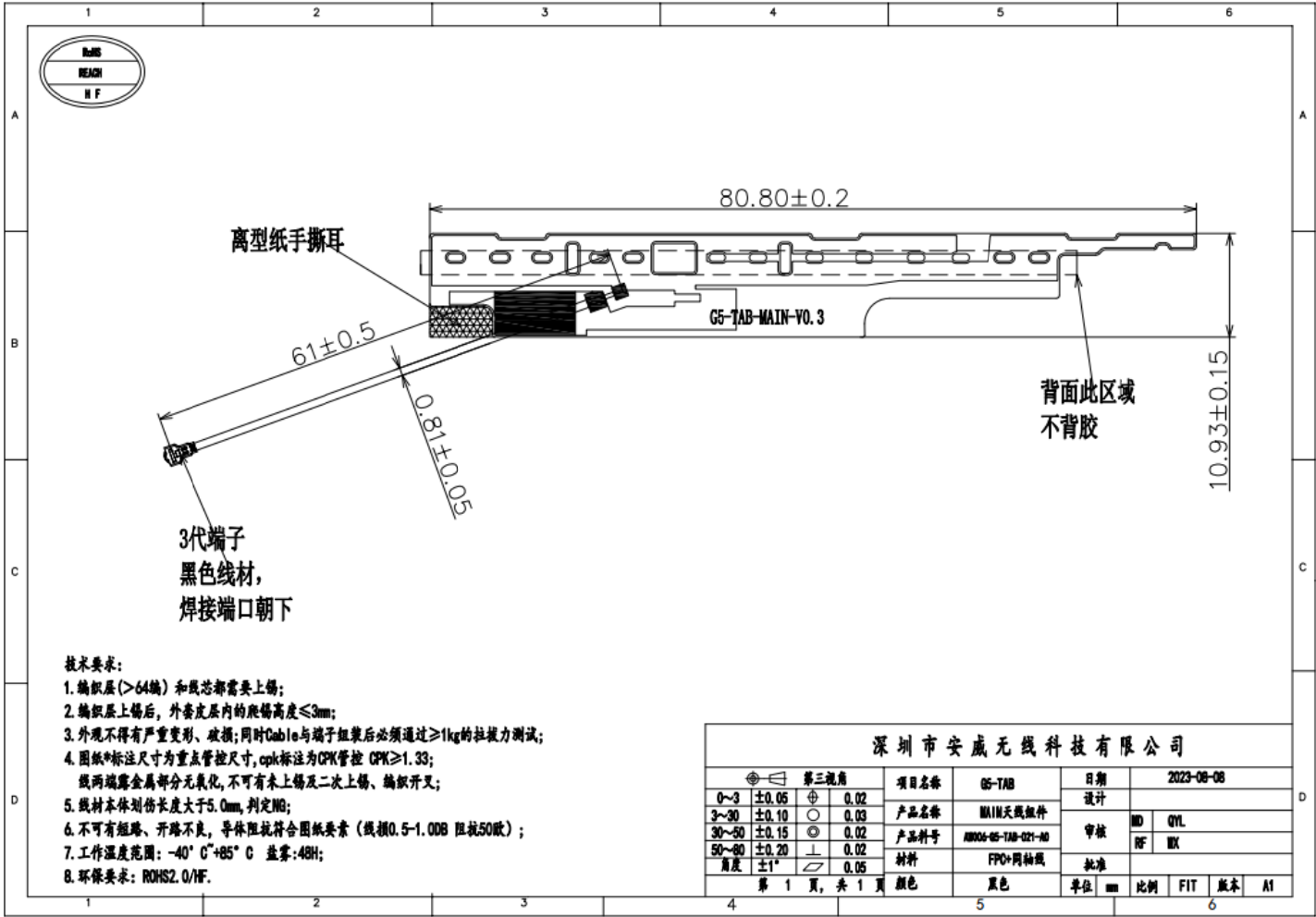
一、产品规格(Product specification)	3
二、电器性能(Electrical performance)	5
1.规格标准(Specification standard)	5
三、参数的测试(Parameter test)	6
1.测试的设置(Test settings)	6
2.测试结果(Test result)	14
四、有源测试的设置(Active test setup)	14
1.测试的场地(Test site)	14
2.测试结果(Test result)	14

一、产品规格(Product specification)

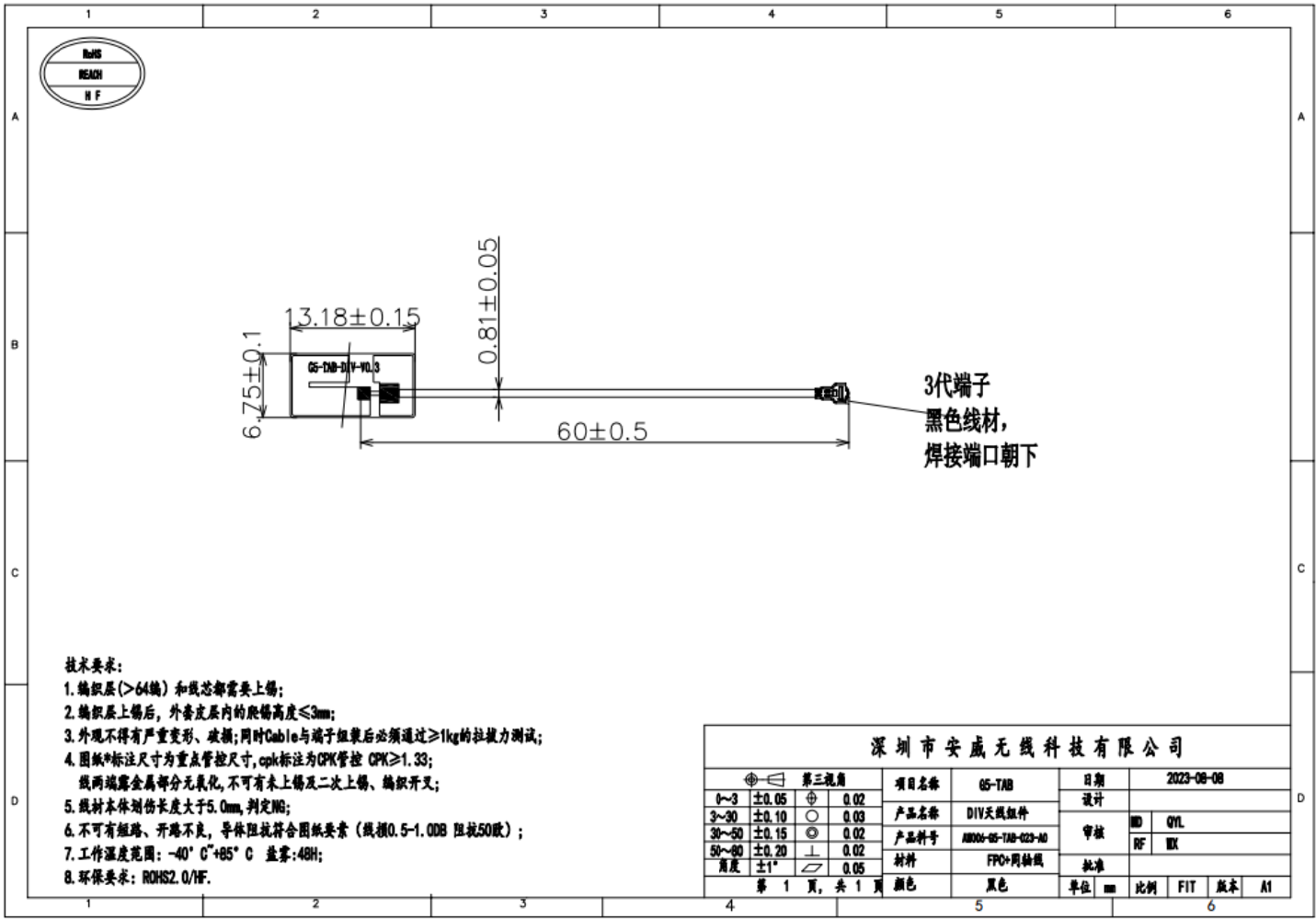
The report mainly provides parameter testing of G5 TAB antenna performance. The G5 TAB antenna is a 4G antenna. (As shown below)



BT&WIFI&GNSS ANT



Main ANT



DIV ANT

二、电器性能(Electrical performance)

1.规格标准(Specification standard)

The working frequency band of the G5 TAB antenna is 699~960MHZ, 1710~2700MHZ, and resonates in this frequency band

Antenna structure: FPC

三、参数的测试(Parameter test)

1.测试的设置(Test settings)

The connections of the VSWR test setup in turn are:

E5071B Network Analyzer → 50 ohm coaxial Cable → 110mm long copper pipe → Test Fixture

Handling of test fixtures:

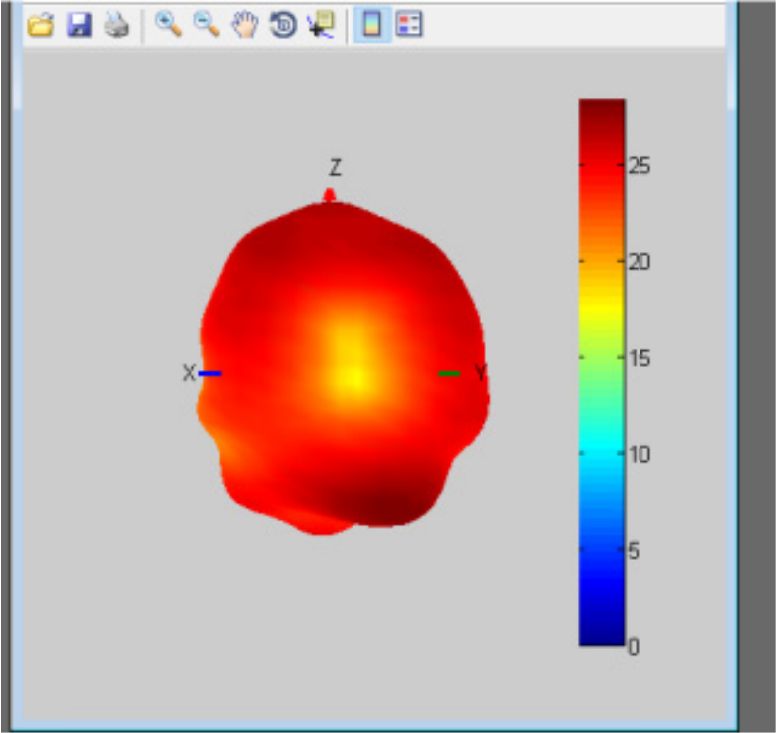
Use a hard cable to lead out the SMA-J connector from the 50 ohm test point of the antenna on the mobile phone PCB, connect it to the copper tube covered with the choke coil, and then connect to other devices in turn.

Main antenna passive parameters:

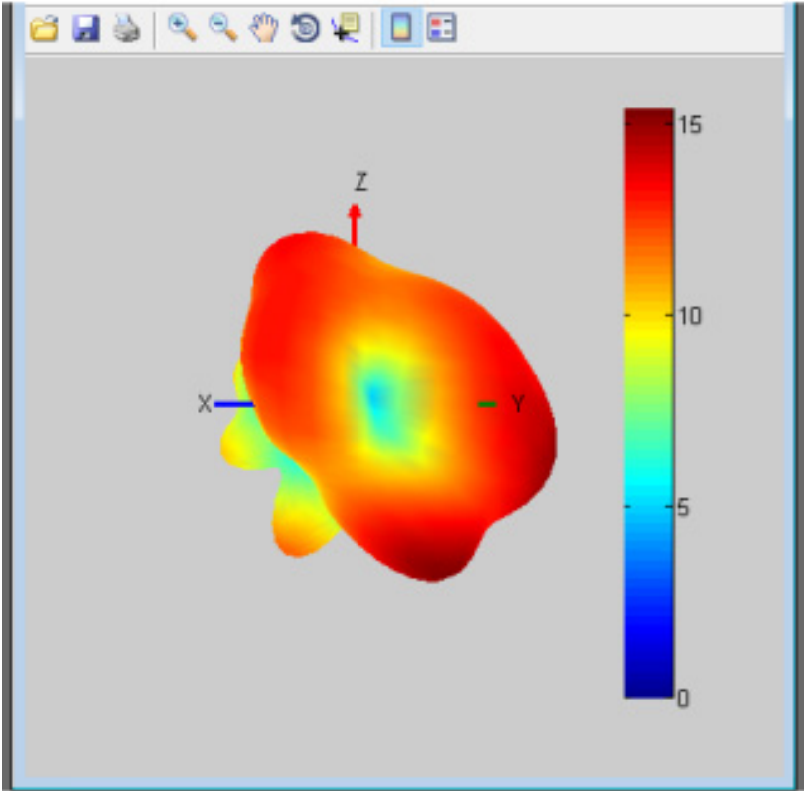
工作频段(Working frequency band): 699~960MHZ, 1710~2700MHZ

2G	2/3/5/8
3G	1/2/4/5/8
4G	B1/2/3/4/5/7/8/12/17/18/19/20/25/26/28/66/71 /34/38/39/40 /41
BT/WIFI	2. 4G+5G
GPS	1575. 42MHz

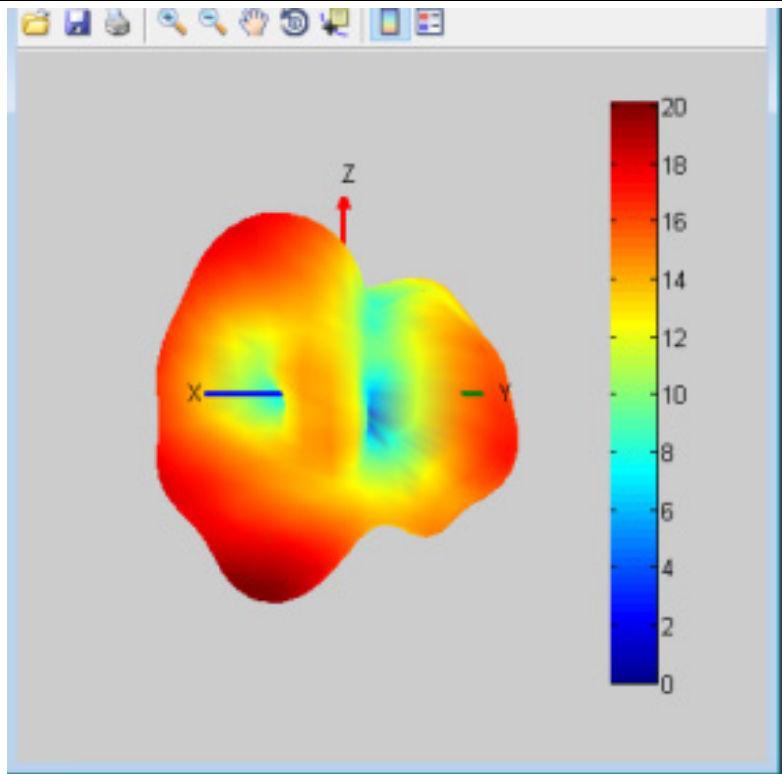
频段 Band	gain 增益 (dBi)	
LTE-B12/B13/B17/B28	-9.2	700MHZ
BC0/BC10/GSM850,WCDMA-B5/B6/B19,LTE-B5/B18/B19/B20/B26	-6.8	820MHZ
GSM900,WCDMA-B8,LTE-B8	-8.7	960MHZ
DCS1800,LTE-B3,WCDMA-B4,LTE-B4/B66	0.46	1710MHZ
BC1,PCS1900,WCDMA-B2,LTE-B2/B25/B39	0.34	1990MHZ
WCDMA-B1,LTE-B1/B34	-0.85	2170MHZ
LTE-B7/B38/B41	2.24	2680MHZ
LTE-B40	0.81	2380MHZ
GPS	0.75	1575MHZ
2.4G WIFI/BT	2.2	2400MHZ
5G WIFI	0.9	5100MHZ



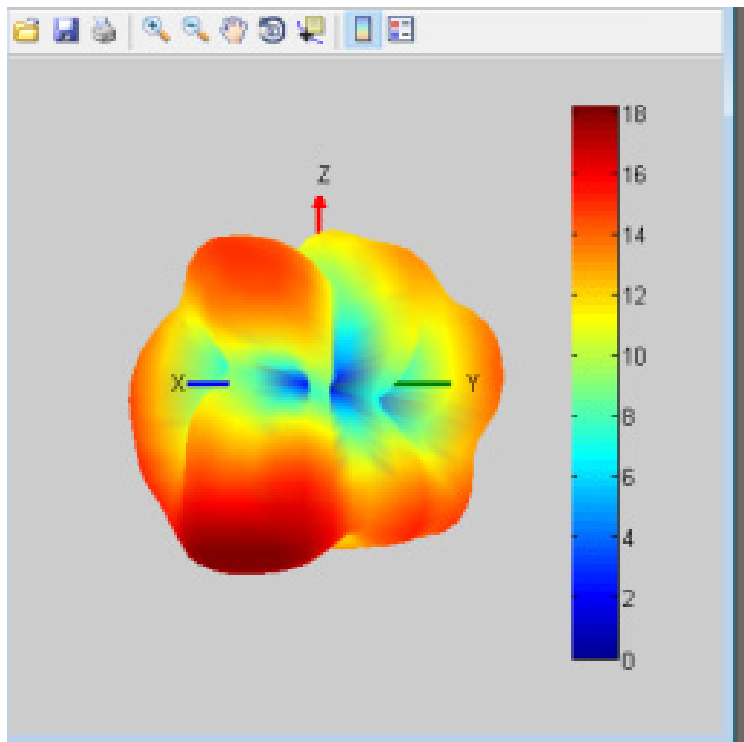
700MHZ



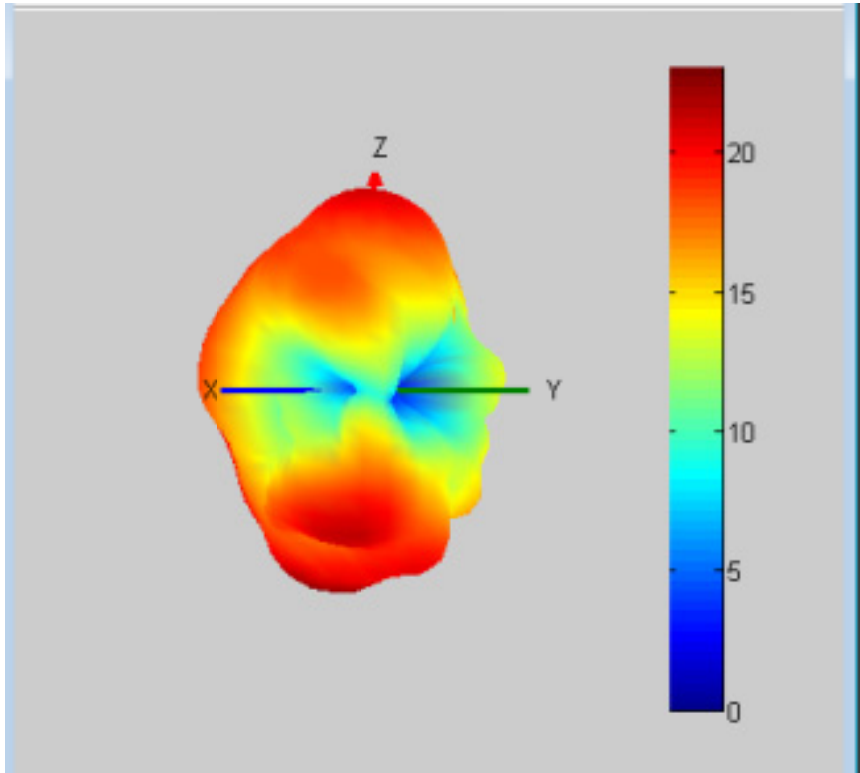
820MH



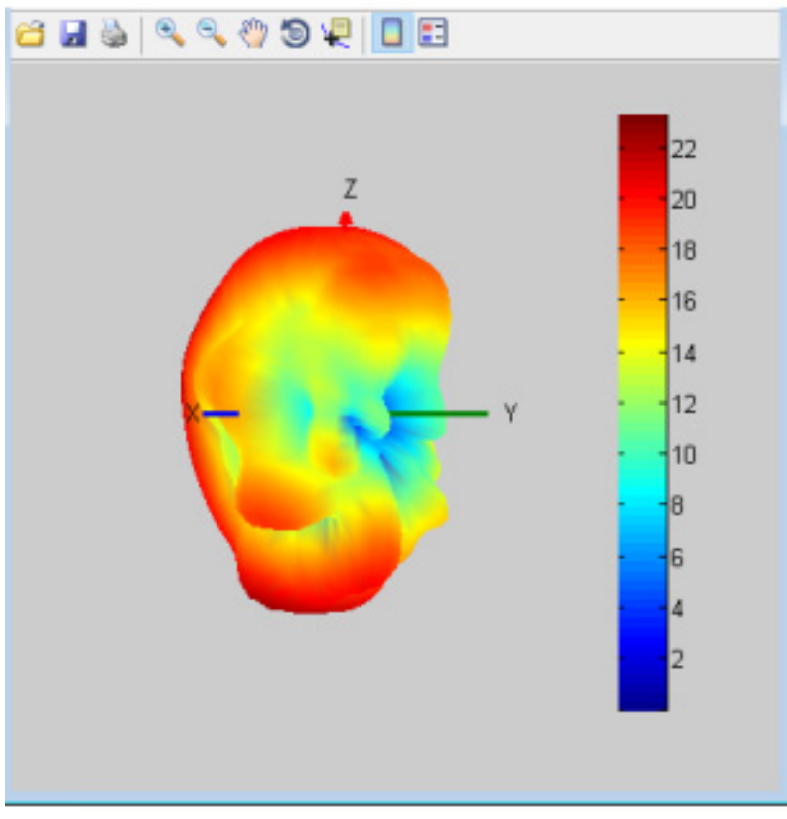
960MHZ



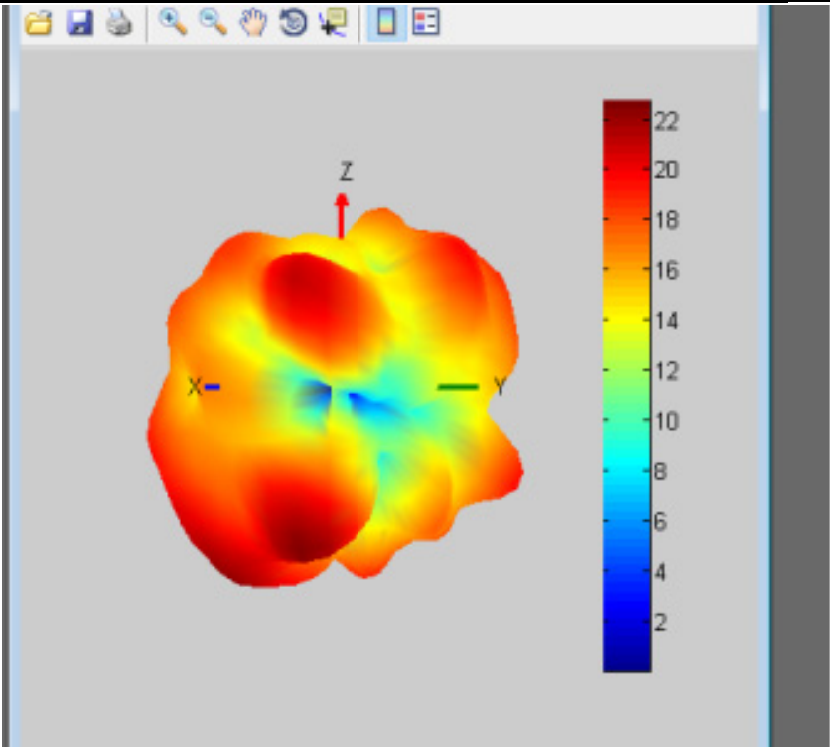
1710MHZ



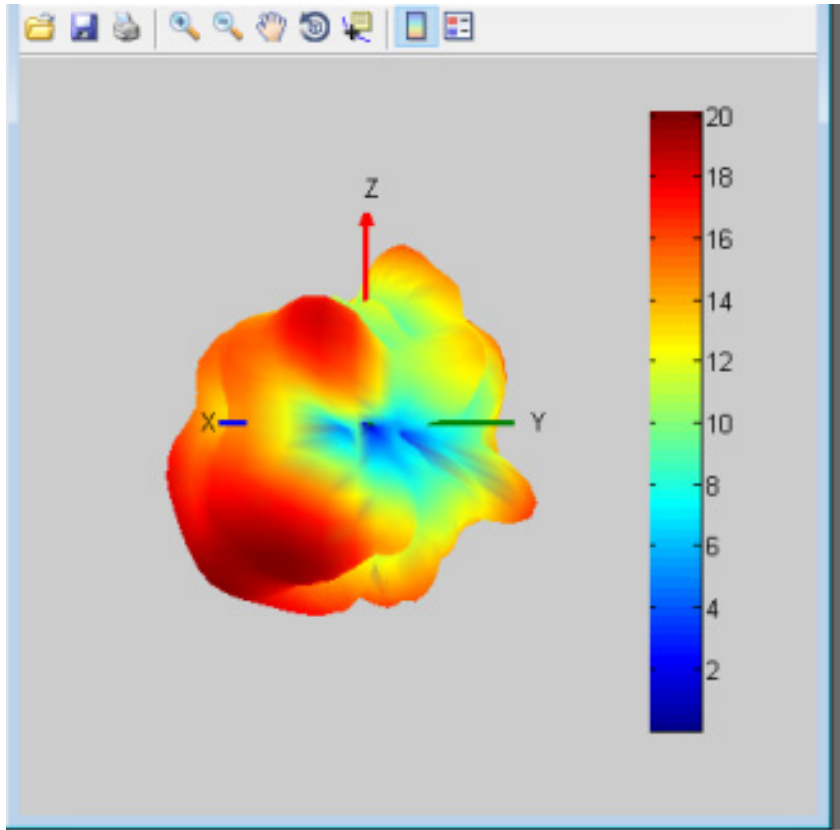
1990NHZ



2170MH



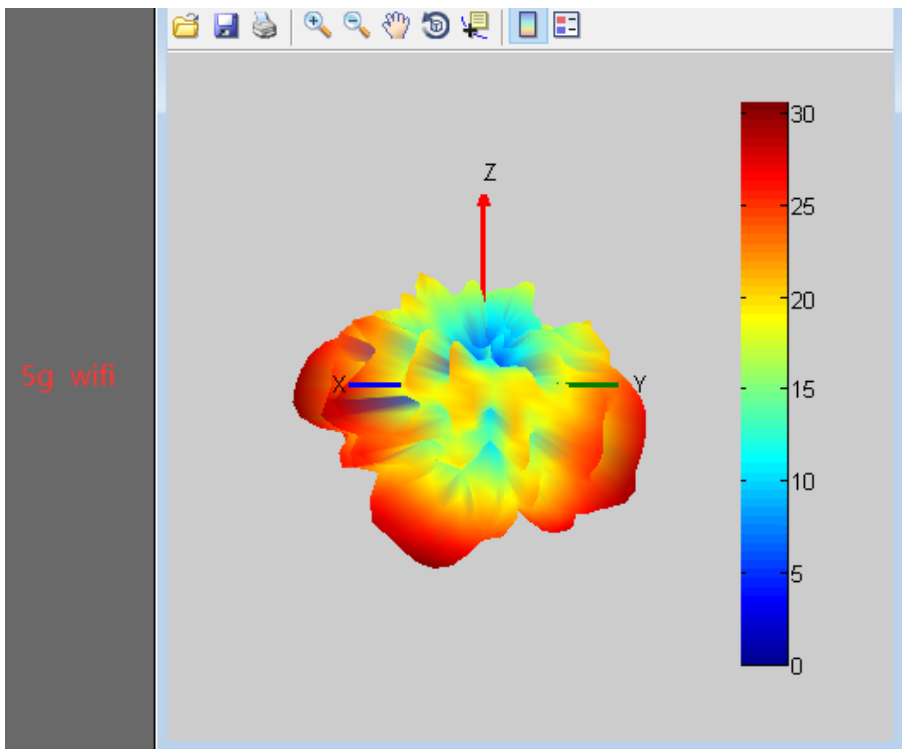
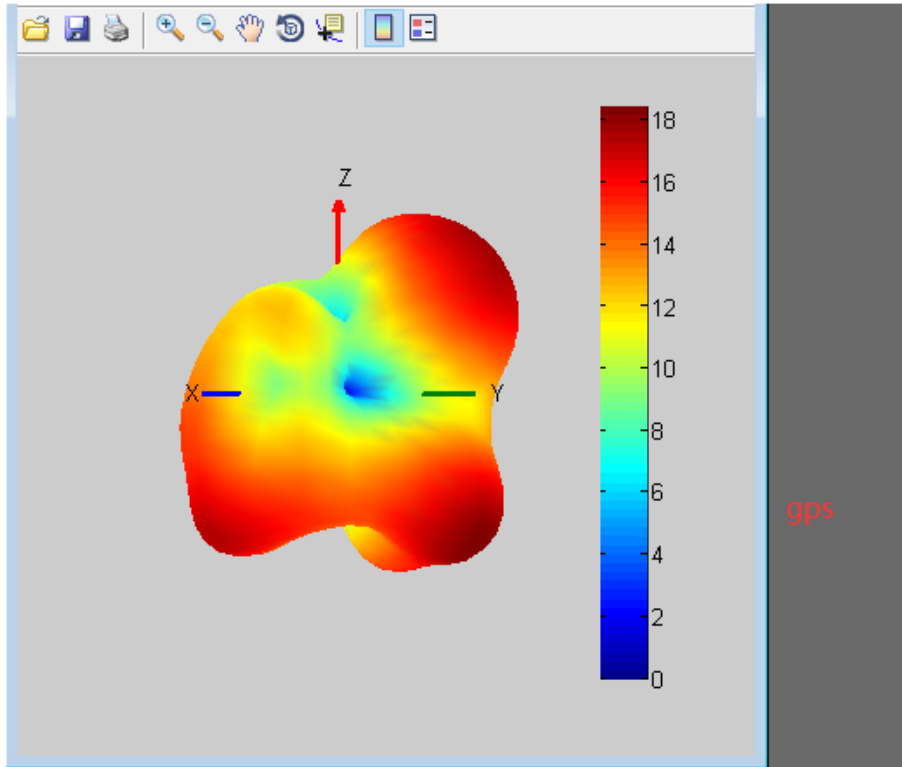
2680MH

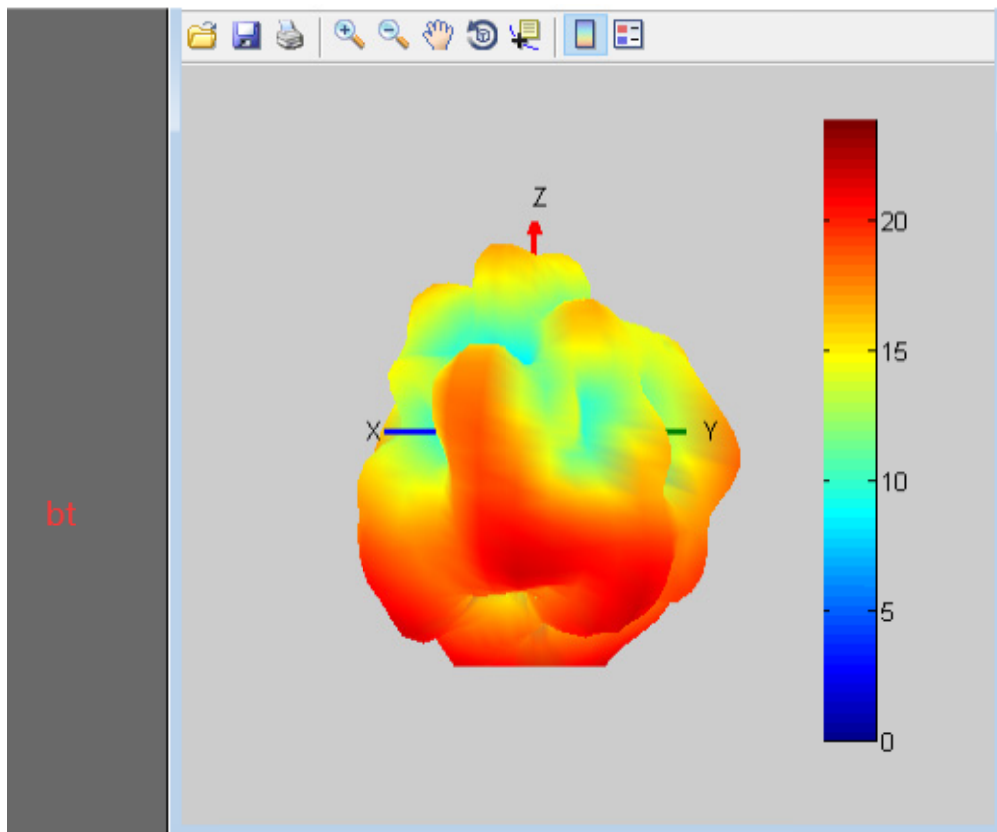
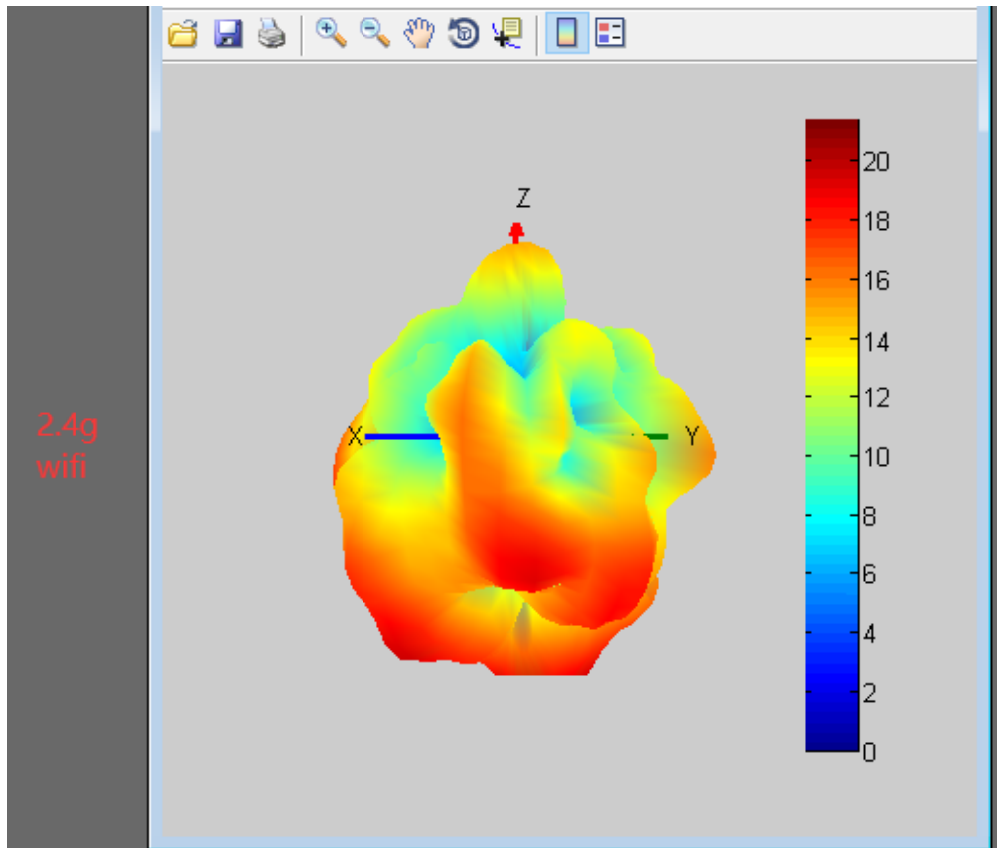


2380MH

GPS/WIFI/BT antenna passive parameters:

工作频段(Working frequency band): 1560~1580MHZ, 2400~2500MHZ, 5180~8525MHZ



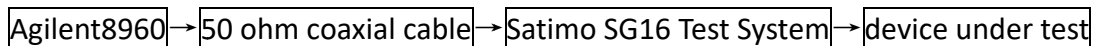


2.测试结果(Test result)

everything is normal.

四、有源测试的设置(Active test setup)

The connections of the active test device in turn are:



1.测试的场地(Test site)

AW microwave anechoic chamber: the test frequency range is 400MHz—6GHz, the quiet zone range is 40cm circumference, and the reflectivity is less than -90 dB.

2.测试结果(Test result)

The maximum radiated power and maximum receiving sensitivity reflect the maximum power radiation value and the best receiving performance of the antenna in the entire radiation space. TRP and TIS reflect the average radiation power and average receiving sensitivity of the antenna, that is, reflect the overall receiving performance of the antenna.

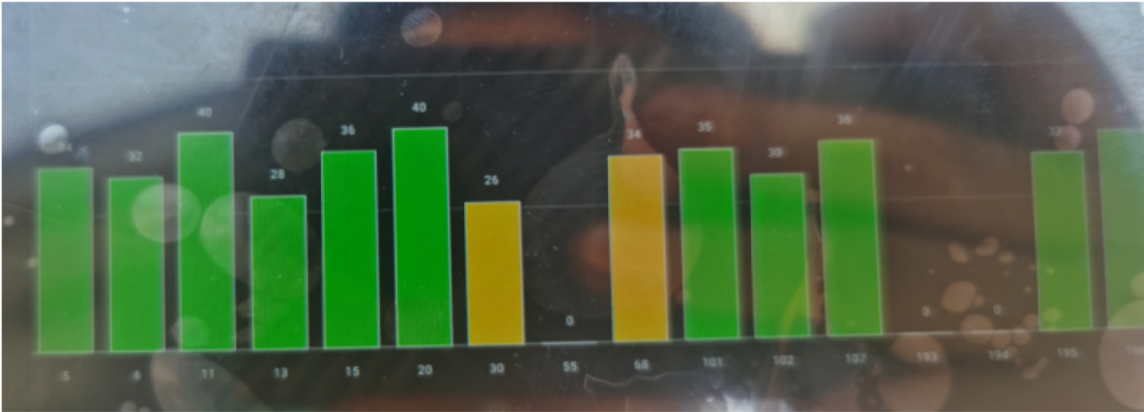
The following are the active test results of the main antenna of the G5 TAB mobile phone:

主天线暗室数据

GSM 850	128	23.52		W 1	LOW	17.29			
	190	23.17			medium	17.1			
	251	23.05	-100.1		high	17.57	-103.		
GSM 900	1	22.15		W 2	LOW	17.06			
	62	22.50			medium	17.19			
	124	22.09	-99.2		high	17.62	-102.0		
DCS 1800	512	25.01		W 4	LOW	17.3			
	698	25.12			medium	17.31			
	885	25.1	-103.1		high	17.1	-103.3		
PCS 1900	512	25.34		W 5	LOW	15.17			
	661	25.15			medium	15.78			
	810	24.42	-102.2		high	15.11	-102.5		
				W 8	LOW	14.13			
					medium	14.01			
					high	14.62	-100.5		

	Channel	TRP (dBm)	TIS (dBm)						Channel	TRP (dBm)	TIS (dBm)
FDD B1	LOW	17.38		FDD B17	LOW	11.19		FDD B66	LOW	17.13	
	medium	17.34			medium	11.14			medium	17.11	
	high	17.05	-90.2		high	12.58	-86.4		high	17.21	-88.5
FDD B2	LOW	17.12		FDD B18	LOW	15.57					
	medium	17.32			medium	15.21					
	high	17.01	-90.3		high	15.25	-90.3				
FDD B3	LOW	17.16		FDD B19	LOW	15.51					
	medium	17.06			medium	15.4					
	high	17.03	-90.2		high	15.61	-90.5				
FDD B4	LOW	17.35		FDD B20	LOW	15.59					
	medium	17.07			medium	15.16					
	high	17.14	-89.5		high	15.6	-89.5				
FDD B5	LOW	14.04		FDD B25	LOW	17.78					
	medium	14.11			medium	17.25					
	high	14.26	-90.2		high	17.86	-87.8				
FDD B7	LOW	18.4		FDD B26	LOW	16.13		TDD B38	LOW	17.31	
	medium	18.08			medium	15.88			medium	17.04	
	high	18.03	-90.5		high	15.33	-90.3		high	17.55	-89.5
FDD B8	LOW	14.36		FDD B28A	LOW	12.11		TDD B40	LOW	17.22	
	medium	13.53			medium	12.09			medium	16.4	
	high	13.04	-87.5		high	12.18	-86.1		high	17.08	-89.2
FDD B12	LOW	10.05		FDD B28B	LOW	12.11		TDD B41	LOW		
	medium	11.12			medium	12.07			medium	17.05	-88.1
	high	11.23	-86.1		high	13.14	-86.2		high		

GPS天线实际测试效果:



WIFI测试效果:

BAND	2.4G WIFI			5G WIFI		
CHANNEL	low	medium	high	low	medium	high
TRP (dBm)	12.42	12.24	12.1	9.74	10.42	11.35
TIS (dBm)	-80.3	-81.5	-81.35	-70.78	-70.9	-71

Recommendations and Conclusions

This report is based on the electrical performance of the antenna measured by the mobile phone provided by the customer, please review it carefully.

安威与您携手共进 共创未来
Join Hands To Create The Future