



# **FCC/IC Test Report**

**For:**  
Lucid USA, Inc.

**Host Model:** P11-K2B100  
**Module Model:** JODY-W354-00A

**Product Description:**  
(Center Console Controller) CCCv2

**FCC ID:** 2AXZJ-K2B100  
**IC:** 27970-K2B100

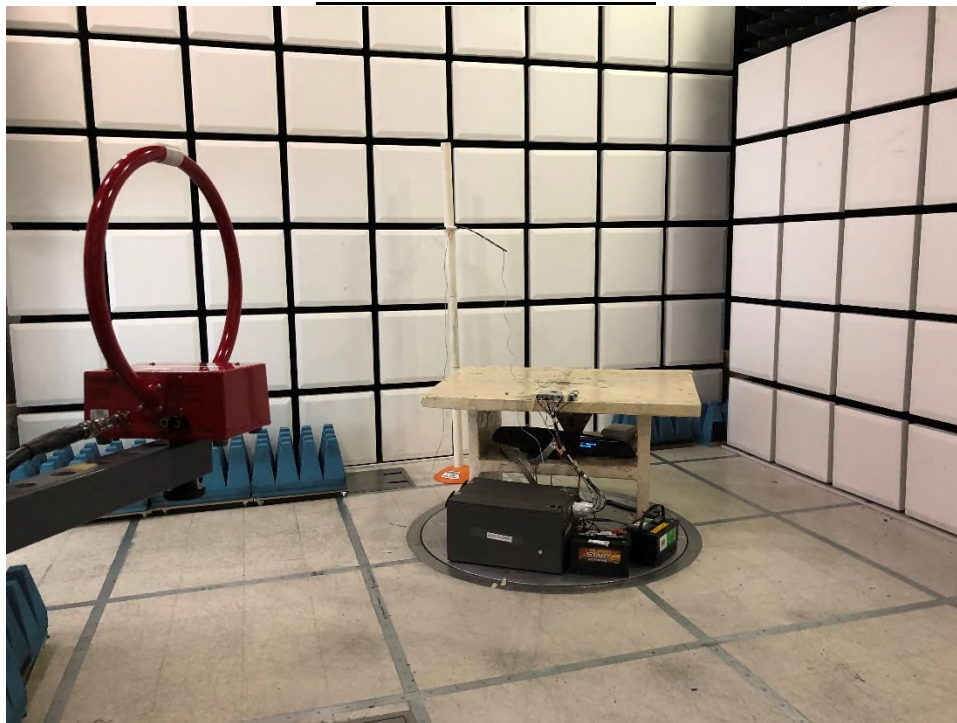
**Applied Rules and Standards:**  
47 CFR Part 15.247 (DTS)  
47 CFR Part 15.407 (UNII-1) & 5 GHz (UNII-3)

**REPORT #:**  
EMC\_LUCID\_011-22001\_15.247\_DTS  
EMC\_LUCID\_011-22001\_15.407

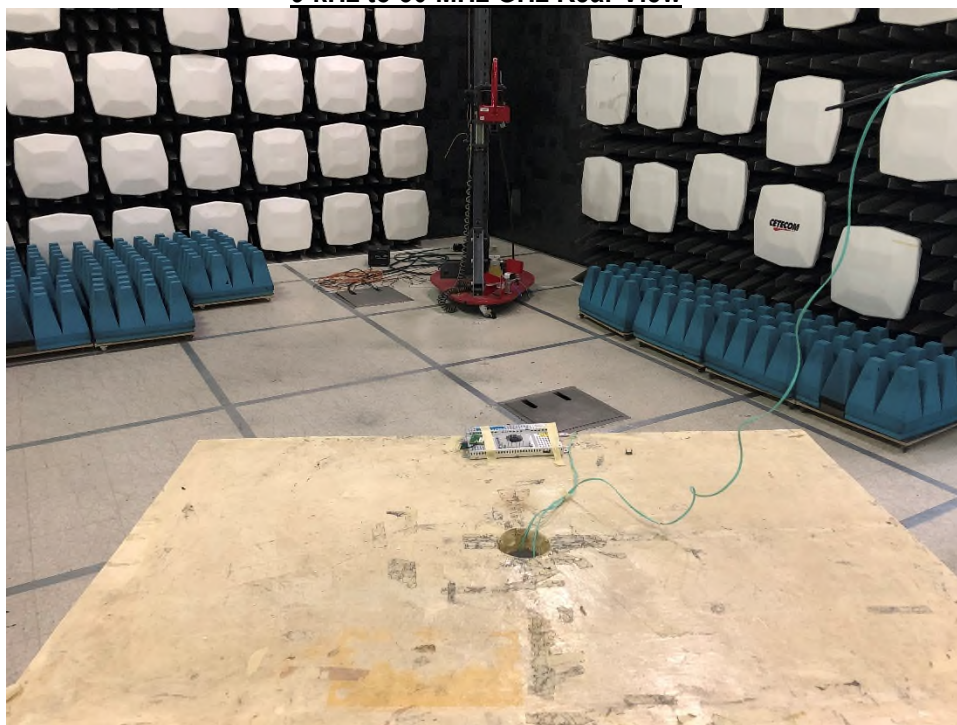
**DATE:** 2023-04-18

## Radiated Emission Measurements

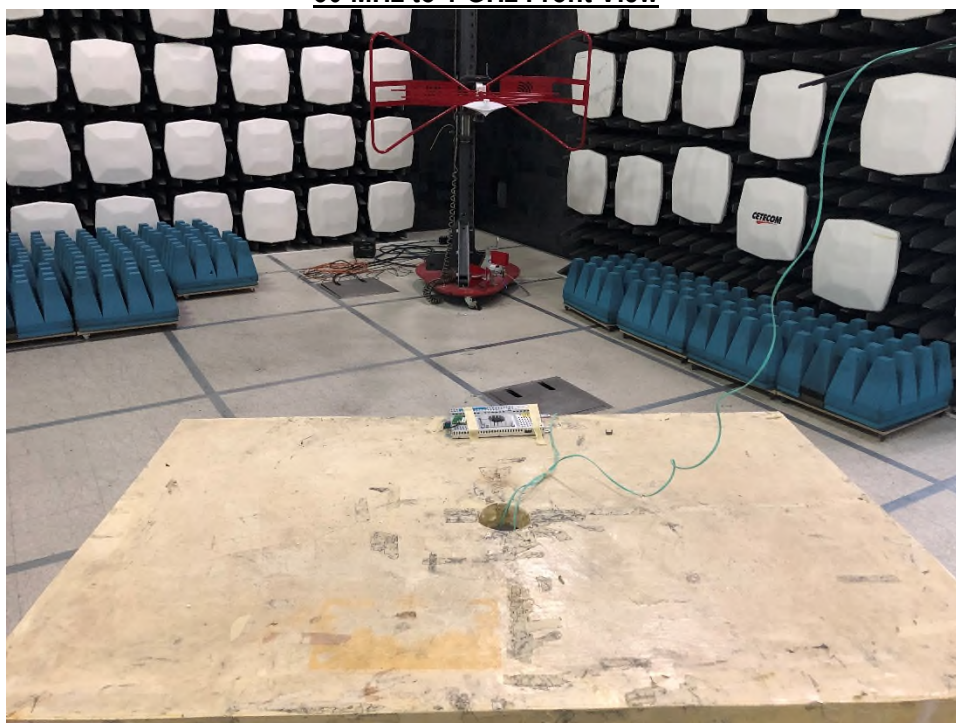
### 9 kHz to 30 MHz Front View



### 9 kHz to 30 MHz GHz Rear View



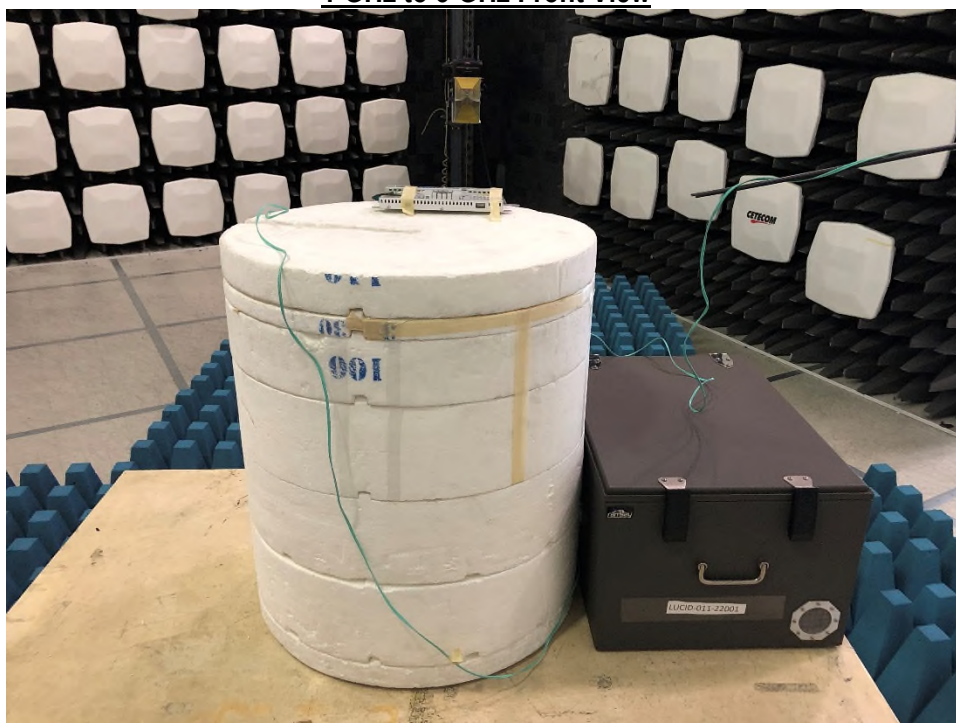
**30 MHz to 1 GHz Front View**



**30 MHz to 1 GHz Rear View**



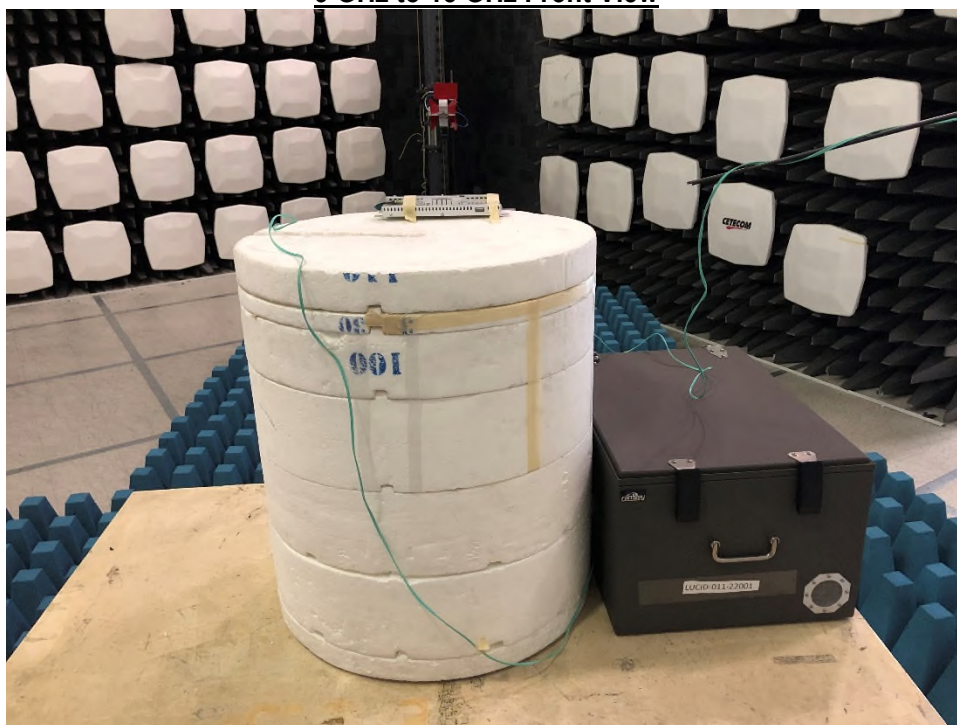
**1 GHz to 3 GHz Front View**



**1 GHz to 3 GHz Rear View**



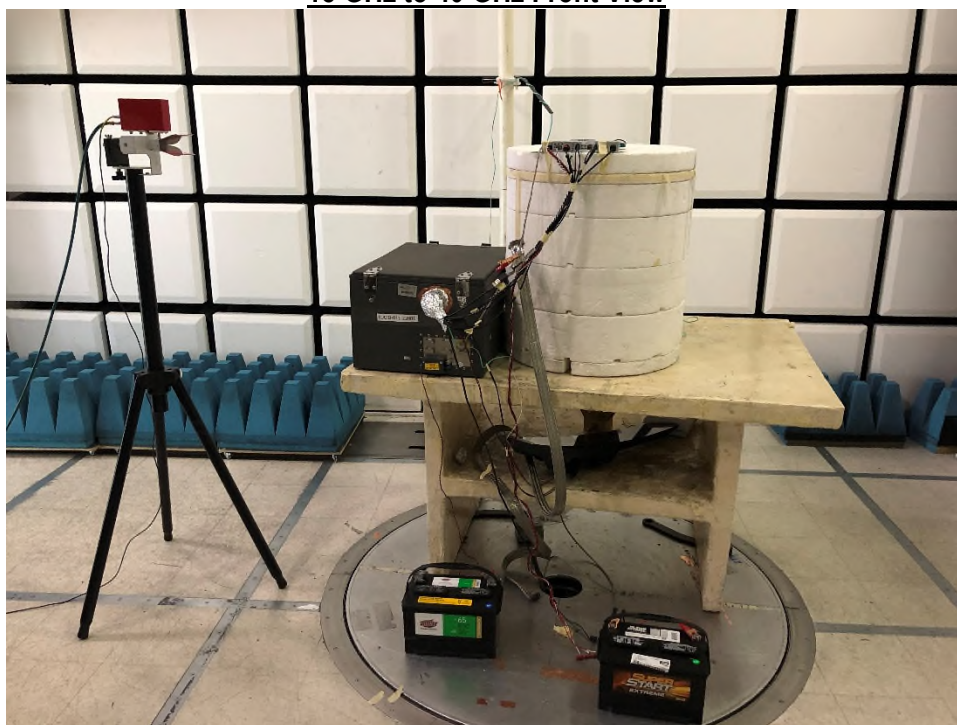
**3 GHz to 18 GHz Front View**



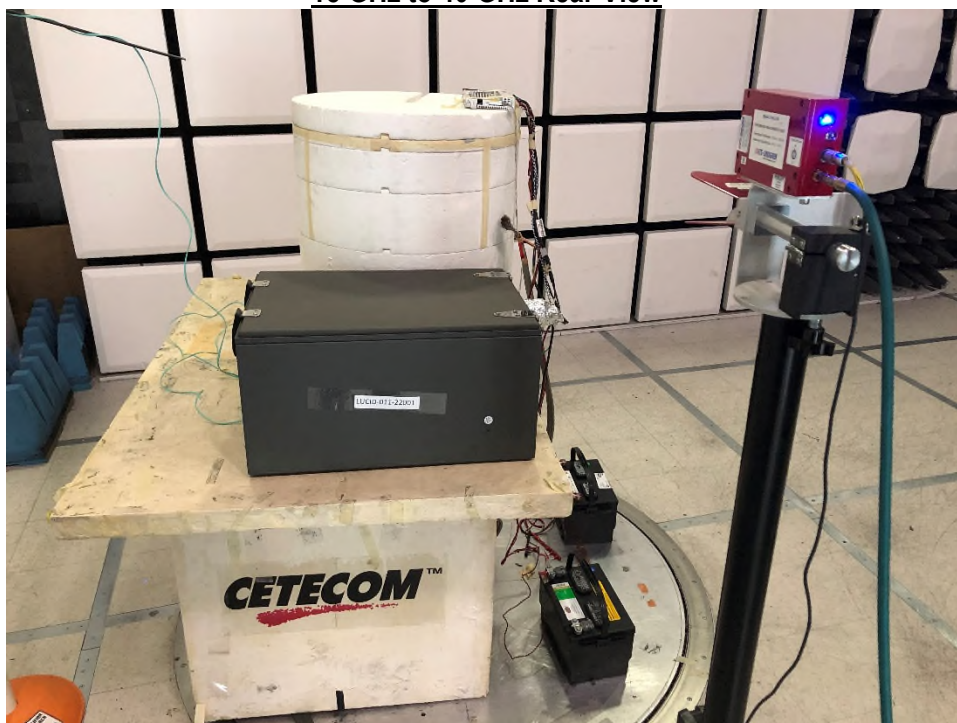
**3 GHz to 18 GHz Rear View**



18 GHz to 40 GHz Front View



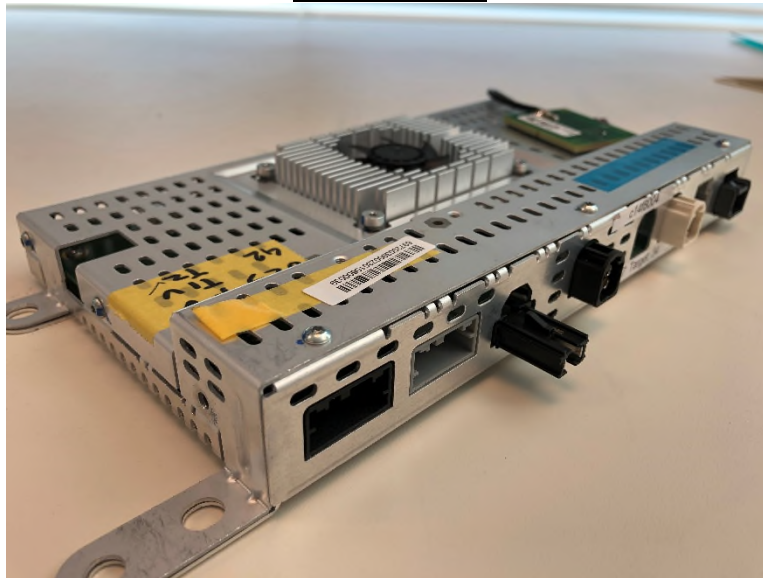
18 GHz to 40 GHz Rear View



## EUT Photos

---

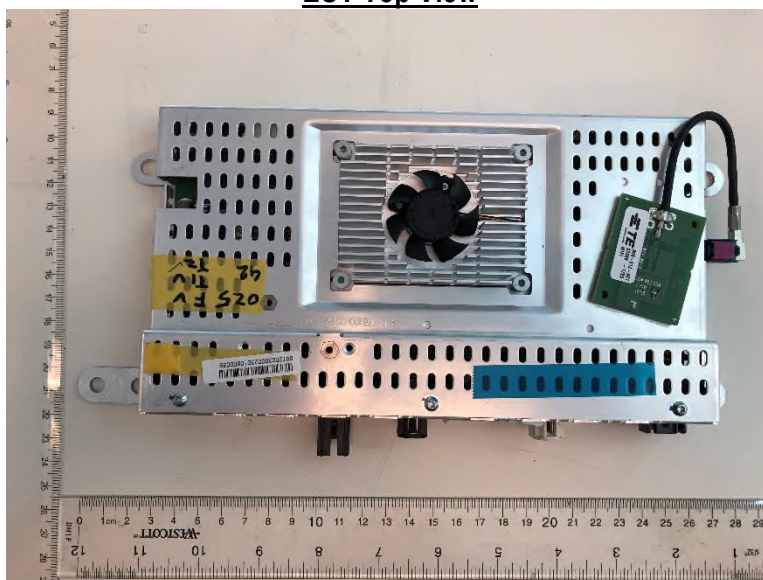
EUT Front View



EUT Rear View



**EUT Top View**



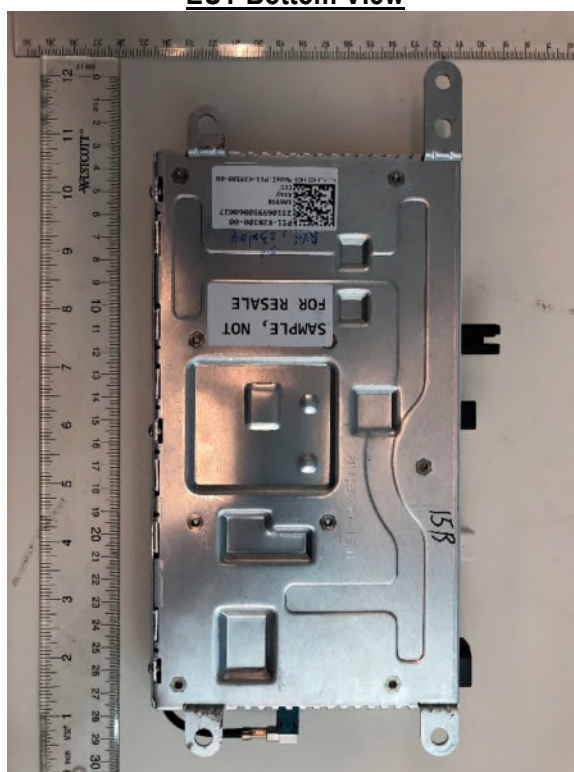
**EUT Front Port**



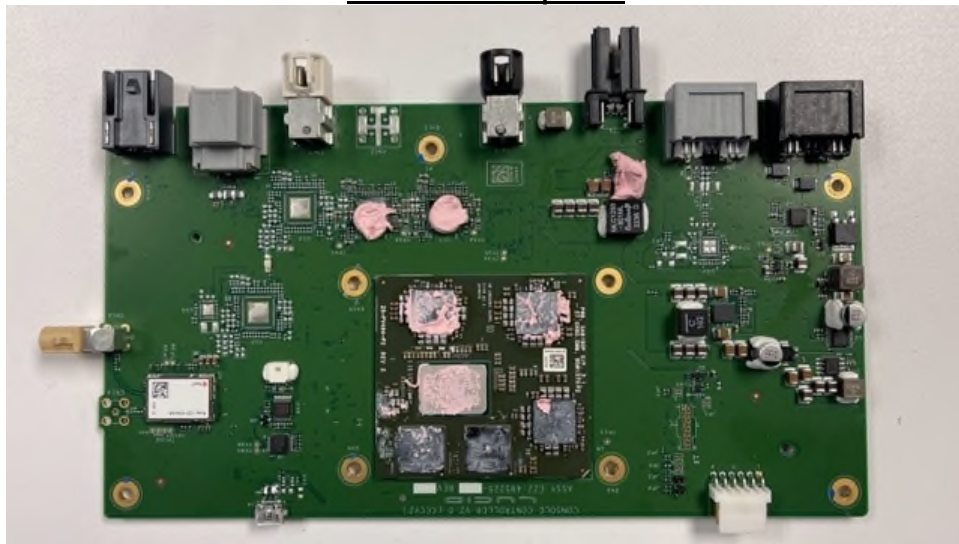
**EUT Rear Port**



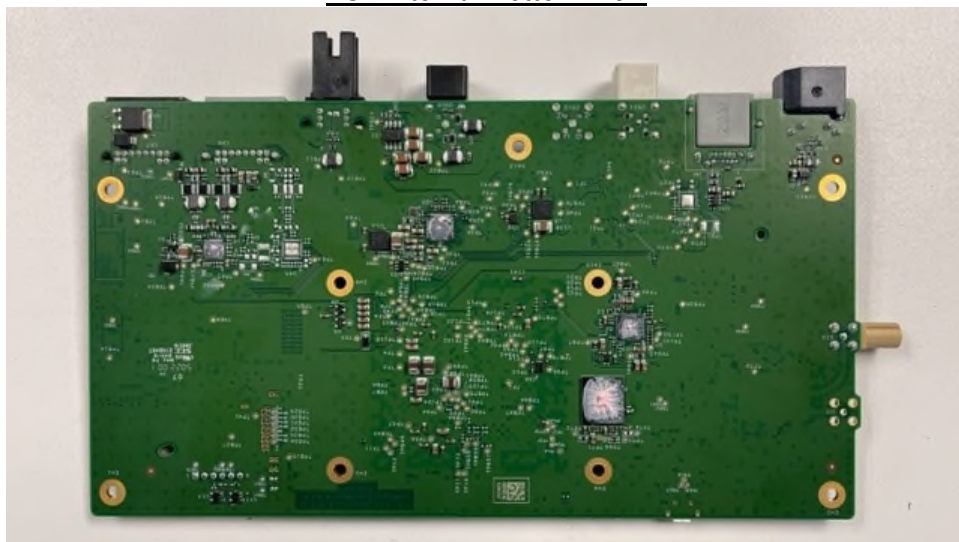
**EUT Bottom View**



**EUT Internal Top View**



**EUT Internal Bottom View**



## **Revision History**

Date	Report Name	Changes to report	Prepared by
4/17/2023	EMC_LUCID_011_22001_FCC_15B_Setup_Photos	Initial Version	Art Thammanavarat

<<< The End >>>