



## **Accredited testing laboratory**

**DAR registration number: TTI-P-G 166/98**

**Federal Motor Transport Authority (KBA)  
DAR registration number: KBA-P 00070-97**

**Test report no. : 4-0902-11-01/03**  
**Type identification : MyX-2a (B2003a)**  
**Test specification : IEEE P1528/D1.2**  
**FCC-ID : M9H95MYX2A**

## Table of Contents

1	General Information.....	3
1.1	Notes .....	3
1.1.1	Statement of Compliance .....	3
1.2	Testing laboratory .....	4
1.3	Details of applicant .....	4
1.4	Application details .....	4
1.5	Test item .....	5
1.6	Test specification(s) .....	6
1.6.1	RF exposure limits .....	6
2	Technical test.....	7
2.1	Summary of test results.....	7
2.2	Test environment .....	7
2.3	Measurement and test set-up.....	7
2.4	Measurement system.....	8
2.4.1	System Description .....	8
2.4.2	Test environment .....	9
2.4.3	Probe description .....	9
2.4.4	Phantom description.....	10
2.4.5	Device holder description .....	10
2.4.6	Scanning procedure.....	11
2.4.7	Spatial Peak SAR Evaluation.....	12
2.4.8	Data Storage and Evaluation.....	13
2.4.9	Test equipment utilized.....	15
2.4.10	Tissue simulating liquids : dielectric properties.....	16
2.4.11	Tissue simulating liquids : parameters .....	17
2.4.12	Measurement uncertainties .....	18
2.4.13	Measurement uncertainty evaluation for SAR test .....	18
2.4.14	Measurement uncertainty evaluation for system validation.....	19
2.4.15	System validation.....	20
2.4.16	Validation procedure.....	21
2.5	Test results (Head and Body SAR).....	22
2.5.1	Description of test procedures.....	23
2.6	Test results (conducted power measurement) .....	24
Annex 1	System performance verification .....	25
Annex 2	Measurement results (printout from DASY <sup>TM</sup> ).....	29
Annex 3	Photo documentation .....	55
Annex 4	Calibration parameters of E-field probe.....	89

## 1 General Information

### 1.1 Notes

The test results of this test report relate exclusively to the test item specified in 1.5. The CETECOM ICT Services GmbH does not assume responsibility for any conclusions and generalisations drawn from the test results with regard to other specimens or samples of the type of the equipment represented by the test item. The test report may only be reproduced or published in full. Reproduction or publication of extracts from the report requires the prior written approval of the CETECOM ICT Services GmbH.

#### 1.1.1 Statement of Compliance

The SAR values found for the MyX-2a (B2003a) Dual band PCS mobile phone are below the maximum recommended levels of 1.6 W/Kg as averaged over any 1 g tissue according to the FCC rule §2.1093, the ANSI/IEEE C 95.1:1992, the NCRP Report Number 86 for uncontrolled environment, according to the Health Canada's Safety Code 6 and the Industry Canada Radio Standards Specification RSS-102 for General Population/Uncontrolled exposure.

The measurement together with the test system set-up is described in chapter 2.3 of this test report. A detailed description of the equipment under test can be found in chapter 1.5.

#### Test laboratory manager:

**August 6, 2003****Thomas Vogler**

Date

Name

Signature

---

#### Technical responsibility for area of testing:

**August 6, 2003****Bernd Rebmann**

Date

Name

Signature

---

## 1.2 Testing laboratory

CETECOM ICT Services GmbH  
Untertuerkheimer Straße 6-10,  
66117 Saarbruecken  
Germany  
Telephone: + 49 681 598 - 0  
Fax: + 49 681 598 - 8475

e-mail: [info@ict.cetecom.de](mailto:info@ict.cetecom.de)  
Internet: <http://www.cetecom-ict.de>

State of accreditation: The Test laboratory (area of testing) is accredited according to DIN EN ISO/IEC 17025. DAR registration number: TTI-P-G-166/98

Test location, if different from CETECOM ICT Services GmbH

Name:  
Street:  
Town:  
Country:  
Phone:  
Fax:

## 1.3 Details of applicant

Name: SAGEM SA  
  
Street: 2-4, rue du Petit Albi  
Town: 95800 Cergy Saint-Christophe  
Country: France  
  
Contact: Mr. Jean Marquet  
Telephone: +33-1-3073-3737

## 1.4 Application details

Date of receipt of application:	July 28, 2003
Date of receipt of test item:	July 28, 2003
Start/Date of test:	July 28, 2003
End of test:	July 30, 2003

Person(s) present during the test: ---

## 1.5 Test item

Description of the test item: Dual band PCS mobile phone

Type identification: MyX-2a (B2003a)

FCC-ID : M9H95MYX2A  
Serial number: 35181695000121-8

Manufacturer:

Name: SAGEM SA  
Street: 2-4, rue du Petit Albi  
Town: 95800 Cergy Saint-Christophe  
Country: France

additional information on the DUT:		
device type :	portable device	
IMEI No:	35181695000121-8	
exposure category:	uncontrolled environment / general population	
test device production information	identical prototype	
device operating configurations :		
operating mode(s)	PCS	
modulation	GMSK	
duty cycle	12.5 % (one out of eight possible channels is used)	
GPRS mobile station class :	----	
GPRS multislot class / no. of timeslots:	----	
operating frequency range(s)	PCS 1900 (tested)	PCS 850 (tested)
- transmitter frequency range :	1850.2 MHz ~ 1909.8 MHz	824.2 MHz ~ 848.8 MHz
- receiver frequency range :	1930.2 MHz ~ 1989.8 MHz	869.2 MHz ~ 893.8 MHz
power class :	1, tested with power level 0 at 1900 MHz 4, tested with power level 5 at 850 MHz	
test channel in 1900 MHz band	661 (1880 MHz)	
test channel in 835 MHz band	192 (836.6 MHz)	
measured peak output power (conducted):	33.2 dBm (channel 192) 30.4 dBm (channel 661)	
antenna type :	integral antenna	
accessories / body-worn configurations :	head-set 23812517-0 car kit A17 – BA10 – 010 data cable 23810787-0 cigar lighter adapter 23811253-7	
battery option :	SA-SN2 189/03 Li-Ion	

## 1.6 Test specification(s)

Supplement C (Edition 01-01) to OET Bulletin 65 (Edition 97-01)

IEEE P1528/D1.2 (April 21, 2003)

RSS-102: Evaluation Procedure for Mobile and Portable Radio Transmitters with respect to Health (Issue 1 (Provisional) of September 25, 1999)

Canada's Safety Code 6: Limits of Human Exposure to Radiofrequency Electromagnetic Fields in the Frequency Range from 3 kHz to 300 GHz (99-EHD-237)

IEEE Std C95.3 – 1991, IEEE Recommended Practice for the Measurement of Potentially Hazardous Electromagnetic Fields – RF and Microwave.

### 1.6.1 RF exposure limits

Human Exposure	Uncontrolled Environment General Population	Controlled Environment Occupational
Spatial Peak SAR* (Brain)	<b>1.60 mW/g</b>	8.00 mW/g
Spatial Average SAR** (Whole Body)	0.08 mW/g	0.40 mW/g
Spatial Peak SAR*** (Hands/Feet/Ankle/Wrist)	4.00 mW/g	20.00 mW/g

**Table 1: RF exposure limits**

The limit applied in this test report is shown in **bold** letters

#### Notes:

- \* The Spatial Peak value of the SAR averaged over any 1 gram of tissue (defined as a tissue volume in the shape of a cube) and over the appropriate averaging time
- \*\* The Spatial Average value of the SAR averaged over the whole body.
- \*\*\* The Spatial Peak value of the SAR averaged over any 10 grams of tissue (defined as a tissue volume in the shape of a cube) and over the appropriate averaging time.

**Uncontrolled Environments** are defined as locations where there is the exposure of individuals who have no knowledge or control of their exposure.

**Controlled Environments** are defined as locations where there is exposure that may be incurred by persons who are aware of the potential for exposure, (i.e. as a result of employment or occupation).

## 2 Technical test

### 2.1 Summary of test results

No deviations from the technical specification(s) were ascertained in the course of the tests performed.	<input checked="" type="checkbox"/>
The deviations as specified in 2.5 were ascertained in the course of the tests performed.	<input type="checkbox"/>

### 2.2 Test environment

General Environment conditions in the test area are as follows :

Ambient temperature: 20°C – 24°C  
Tissue simulating liquid: 20°C – 24°C  
Humidity: 40% – 50%

Exact temperature values for each test are shown in the table(s) under 2.5. and/or on the measurement plots.

### 2.3 Measurement and test set-up

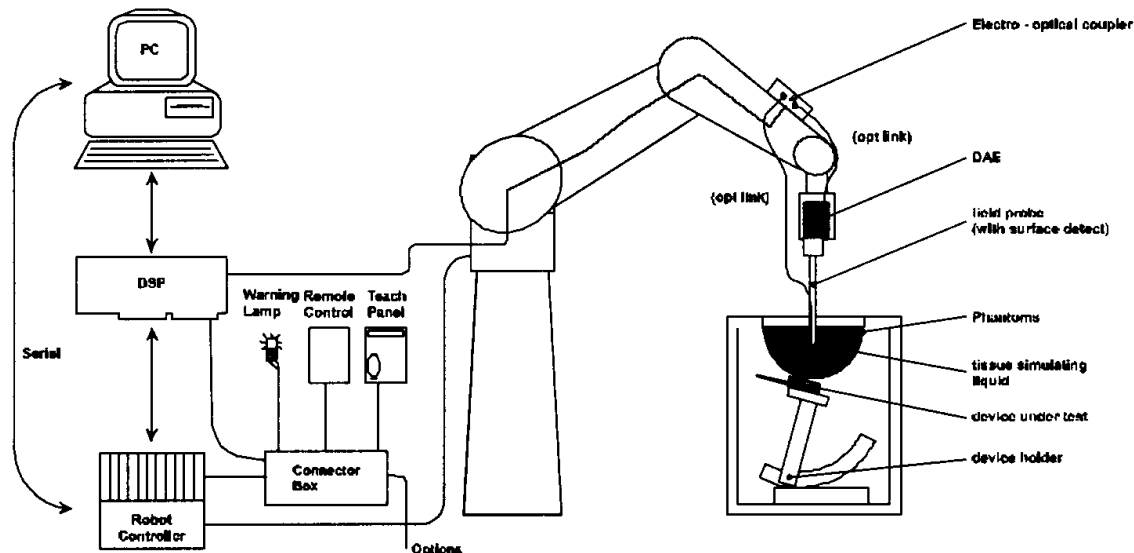
The measurement system is described in chapter 2.4.

The test setup for the system validation can be found in chapter 2.4.14.

A description of positioning and test signal control can be found in chapter 2.5 together with the test results.

## 2.4 Measurement system

### 2.4.1 System Description



The DASY4 system for performing compliance tests consists of the following items:

- A standard high precision 6-axis robot (Stäubli RX family) with controller and software. An arm extension for accommodating the data acquisition electronics (DAE).
- A dosimetric probe, i.e. an isotropic E-field probe optimized and calibrated for usage in tissue simulating liquid. The probe is equipped with an optical surface detector system.
- A data acquisition electronic (DAE) which performs the signal amplification, signal multiplexing, AD-conversion, offset measurements, mechanical surface detection, collision detection, etc. The unit is battery powered with standard or rechargeable batteries. The signal is optically transmitted to the EOC.
- A unit to operate the optical surface detector which is connected to the EOC.
- The Electro-Optical Coupler (EOC) performs the conversion from the optical into a digital electric signal of the DAE. The EOC is connected to the DASY4 measurement server.
- The DASY4 measurement server, which performs all real-time data evaluation for field measurements and surface detection, controls robot movements and handles safety operation. A computer operating Windows 2000
- DASY4 software and SEMCAD data evaluation software.
- Remote control with teach panel and additional circuitry for robot safety such as warning lamps, etc.
- The generic twin phantom enabling the testing of left-hand and right-hand usage.
- The device holder for handheld mobile phones.
- Tissue simulating liquid mixed according to the given recipes.
- System validation dipoles allowing to validate the proper functioning of the system.



## 2.4.2 Test environment

The DASY4 measurement system is placed at the head end of a room with dimensions :  $5 \times 2.5 \times 3 \text{ m}^3$ , the SAM phantom is placed in a distance of 75 cm from the side walls and 1.1m from the rear wall. Above the test system a  $1.5 \times 1.5 \text{ m}^2$  array of pyramid absorbers is installed to reduce reflections from the ceiling.

Picture 1 of the photo documentation shows a complete view of the the test environment.

The system allows the measurement of SAR values larger than  $0.005 \text{ mW/g}$ .

## 2.4.3 Probe description

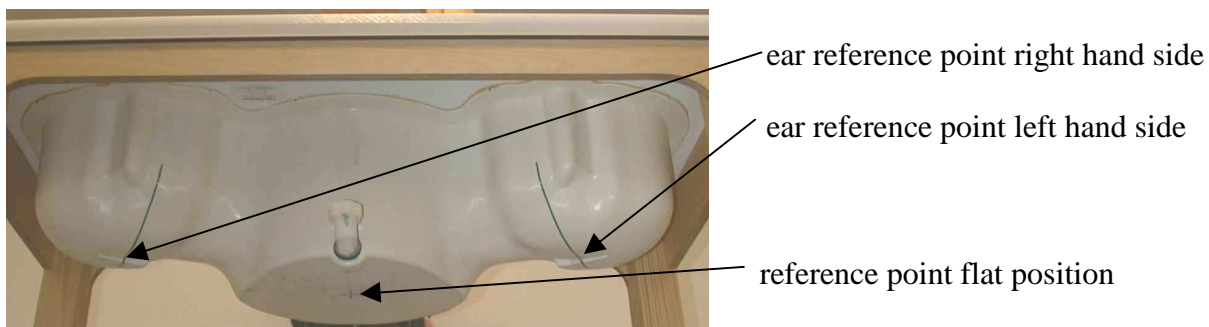
Isotropic E-Field Probe ET3DV6 for Dosimetric Measurements

Technical data according to manufacturer information	
Construction	Symmetrical design with triangular core Built-in optical fiber for surface detection system Built-in shielding against static charges PEEK enclosure material (resistant to organic solvents, e.g., glycolether)
Calibration	In air from 10 MHz to 2.5 GHz In head tissue simulating liquid (HSL) at 900 (800-1000) MHz and 1.8 GHz (1700-1910 MHz) (accuracy $\pm 9.5\%$ ; $k=2$ ) Calibration for other liquids and frequencies upon request
Frequency	10 MHz to 3 GHz (dosimetry); Linearity: $\pm 0.2 \text{ dB}$ (30 MHz to 3 GHz)
Directivity	$\pm 0.2 \text{ dB}$ in HSL (rotation around probe axis) $\pm 0.4 \text{ dB}$ in HSL (rotation normal to probe axis)
Dynamic range	$5 \mu\text{W/g}$ to $> 100 \text{ mW/g}$ ; Linearity: $\pm 0.2 \text{ dB}$
Optical Surface Detection	$\pm 0.2 \text{ mm}$ repeatability in air and clear liquids over diffuse reflecting surfaces (ET3DV6 only)
Dimensions	Overall length: 330 mm Tip length: 16 mm Body diameter: 12 mm Tip diameter: 6.8 mm Distance from probe tip to dipole centers: 2.7 mm
Application	General dosimetry up to 3 GHz Compliance tests of mobile phones Fast automatic scanning in arbitrary phantoms (ET3DV6)

#### 2.4.4 Phantom description

The used SAM Phantom meets the requirements specified in Edition 01-01 of Supplement C to OET Bulletin 65 for Specific Absorption Rate (SAR) measurements.

The phantom consists of a fibreglass shell integrated in a wooden table. It allows left-hand and right-hand head as well as body-worn measurements with a maximum liquid depth of 18 mm in head position and 22 mm in planar position (body measurements). The thickness of the Phantom shell is 2 mm +/- 0.1 mm.



#### 2.4.5 Device holder description

The DASY4 device holder has two scales for device rotation (with respect to the body axis) and the device inclination (with respect to the line between the ear openings). The plane between the ear openings and the mouth tip has a rotation angle of 65°. The bottom plate contains three pair of bolts for locking the device holder. The device holder positions are adjusted to the standard measurement positions in the three sections. This device holder is used for standard mobile phones or PDA's only. If necessary an additional support of polystyrene material is used.



Larger DUT's (e.g. notebooks) cannot be tested using this device holder. Instead a support of bigger polystyrene cubes and thin polystyrene plates is used to position the DUT in all relevant positions to find and measure spots with maximum SAR values .

Therefore those devices are normally only tested at the flat part of the SAM.

## 2.4.6 Scanning procedure

The DASY4 installation includes predefined files with recommended procedures for measurements and validation. They are read-only document files and destined as fully defined but unmeasured masks. All test positions (head or body-worn) are tested with the same configuration of test steps differing only in the grid definition for the different test positions.

- The „reference“ and „drift“ measurements are located at the beginning and end of the batch process. They measure the field drift at one single point in the liquid over the complete procedure. The indicated drift is mainly the variation of the DUT's output power and should vary max. +/- 5 %.
- The „surface check“ measurement tests the optical surface detection system of the DASY4 system by repeatedly detecting the surface with the optical and mechanical surface detector and comparing the results. The output gives the detecting heights of both systems, the difference between the two systems and the standard deviation of the detection repeatability. Air bubbles or refraction in the liquid due to separation of the sugar-water mixture gives poor repeatability (above  $\pm 0.1\text{mm}$ ). To prevent wrong results tests are only executed when the liquid is free of air bubbles. The difference between the optical surface detection and the actual surface depends on the probe and is specified with each probe. (It does not depend on the surface reflectivity or the probe angle to the surface within  $\pm 30^\circ$ .)
- The „area scan“ measures the SAR above the DUT or verification dipole on a parallel plane to the surface. It is used to locate the approximate location of the peak SAR with 2D spline interpolation. The robot performs a stepped movement along one grid axis while the local electrical field strength is measured by the probe. The probe is touching the surface of the SAM during acquisition of measurement values. The standard scan uses large grid spacing for faster measurement. Standard grid spacing for head measurements is 15 mm in x- and y- dimension. If a finer resolution is needed, the grid spacing can be reduced. Grid spacing and orientation have no influence on the SAR result. For special applications where the standard scan method does not find the peak SAR within the grid, e.g. mobile phones with flip cover, the grid can be adapted in orientation. Results of this coarse scan are shown in annex 2.
- A „7x7x7 zoom scan“ measures the field in a volume around the 2D peak SAR value acquired in the previous „coarse“ scan. This is a fine 7x7 grid where the robot additionally moves the probe in 7 steps along the z-axis away from the bottom of the Phantom. Grid spacing for the cube measurement is 5 mm in x and y-direction and 5 mm in z-direction. DASY4 is also able to perform repeated zoom scans if more than 1 peak is found during area scan. In this document, the evaluated peak 1g and 10g averaged SAR values are shown in the 2D-graphics in annex 2. Test results relevant for the specified standard (see chapter 1.6.) are shown in table form in chapter 2.5.
- A Z-axis scan measures the total SAR value at the x-and y-position of the maximum SAR value found during the cube 7x7x7 scan. The probe is moved away in z-direction from the bottom of the SAM phantom in 2mm steps. This measurement shows the continuity of the liquid and can - depending in the field strength – also show the liquid depth. A z-axis scan of the measurement with maximum SAR value is shown in annex 2.

## 2.4.7 Spatial Peak SAR Evaluation

The spatial peak SAR - value for 1 and 10 g is evaluated after the Cube measurements have been done. The basis of the evaluation are the SAR values measured at the points of the fine cube grid consisting of 7 x 7 x 7 points. The algorithm that finds the maximal averaged volume is separated into three different stages.

- The data between the dipole center of the probe and the surface of the phantom are extrapolated. This data cannot be measured since the center of the dipole is 2.7 mm away from the tip of the probe and the distance between the surface and the lowest measuring point is about 1 mm (see probe calibration sheet). The extrapolated data from a cube measurement can be visualized by selecting 'Graph Evaluated'.
- The maximum interpolated value is searched with a straight-forward algorithm. Around this maximum the SAR - values averaged over the spatial volumes (1g or 10 g) are computed using the 3d-spline interpolation algorithm. If the volume cannot be evaluated (i.e., if a part of the grid was cut off by the boundary of the measurement area) the evaluation will be started on the corners of the bottom plane of the cube.
- All neighboring volumes are evaluated until no neighboring volume with a higher average value is found.

### Extrapolation

The extrapolation is based on a least square algorithm [W. Gander, Computermathematik, p.168-180]. Through the points in the first 3 cm along the z-axis, polynomials of order four are calculated. These polynomials are then used to evaluate the points between the surface and the probe tip. The points, calculated from the surface, have a distance of 1 mm from each other.

### Interpolation

The interpolation of the points is done with a 3d-Spline. The 3d-Spline is composed of three one-dimensional splines with the "Not a knot"-condition [W. Gander, Computermathematik, p.141-150] (x, y and z -direction) [Numerical Recipes in C, Second Edition, p.123ff ].

### Volume Averaging

At First the size of the cube is calculated. Then the volume is integrated with the trapezoidal algorithm. 8000 points (20x20x20) are interpolated to calculate the average.

### Advanced Extrapolation

DASY4 uses the advanced extrapolation option which is able to compensate boundary effects on E-field probes.

## 2.4.8 Data Storage and Evaluation

### Data Storage

The DASY4 software stores the acquired data from the data acquisition electronics as raw data (in microvolt readings from the probe sensors), together with all necessary software parameters for the data evaluation (probe calibration data, liquid parameters and device frequency and modulation data) in measurement files with the extension ".DA4". The software evaluates the desired unit and format for output each time the data is visualized or exported. This allows verification of the complete software setup even after the measurement and allows correction of incorrect parameter settings. For example, if a measurement has been performed with a wrong crest factor parameter in the device setup, the parameter can be corrected afterwards and the data can be re-evaluated.

The measured data can be visualized or exported in different units or formats, depending on the selected probe type ([V/m], [A/m], [°C], [mW/g], [mW/cm²], [dBrel], etc.). Some of these units are not available in certain situations or show meaningless results, e.g., a SAR output in a lossless media will always be zero. Raw data can also be exported to perform the evaluation with other software packages.

### Data Evaluation by SEMCAD

The SEMCAD software automatically executes the following procedures to calculate the field units from the microvolt readings at the probe connector. The parameters used in the evaluation are stored in the configuration modules of the software:

Probe parameters:	- Sensitivity	$\text{Norm}_i, a_{i0}, a_{i1}, a_{i2}$
	- Conversion factor	$\text{ConvF}_i$
	- Diode compression point	$\text{Dcpi}$
Device parameters:	- Frequency	$f$
	- Crest factor	$cf$
Media parameters:	- Conductivity	$\sigma$
	- Density	$\rho$

These parameters must be set correctly in the software. They can be found in the component documents or they can be imported into the software from the configuration files issued for the DASY4 components. In the direct measuring mode of the multimeter option, the parameters of the actual system setup are used. In the scan visualization and export modes, the parameters stored in the corresponding document files are used.

The first step of the evaluation is a linearization of the filtered input signal to account for the compression characteristics of the detector diode. The compensation depends on the input signal, the diode type and the DC-transmission factor from the diode to the evaluation electronics.

If the exciting field is pulsed, the crest factor of the signal must be known to correctly compensate for peak power. The formula for each channel can be given as:

$$V_i = U_i + U_i^2 \cdot cf/dcp_i$$

with  $V_i$  = compensated signal of channel i (i = x, y, z)  
 $U_i$  = input signal of channel i (i = x, y, z)  
 $cf$  = crest factor of exciting field (DASY parameter)  
 $dcp_i$  = diode compression point (DASY parameter)

From the compensated input signals the primary field data for each channel can be evaluated:

E-field probes:  $E_i = (V_i / Norm_i \cdot ConvF)^{1/2}$

H-field probes:  $H_i = (V_i)^{1/2} \cdot (a_{i0} + a_{i1}f + a_{i2}f^2)/f$

with  $V_i$  = compensated signal of channel i (i = x, y, z)  
 $Norm_i$  = sensor sensitivity of channel i (i = x, y, z)  
 [mV/(V/m)<sup>2</sup>] for E-field Probes  
 $ConvF$  = sensitivity enhancement in solution  
 $a_{ij}$  = sensor sensitivity factors for H-field probes  
 $f$  = carrier frequency [GHz]  
 $E_i$  = electric field strength of channel i in V/m  
 $H_i$  = magnetic field strength of channel i in A/m

The RSS value of the field components gives the total field strength (Hermitian magnitude):

$$E_{tot} = (E_x^2 + E_y^2 + E_z^2)^{1/2}$$

The primary field data are used to calculate the derived field units.

$$SAR = (E_{tot}^2 \cdot \sigma) / (\rho \cdot 1000)$$

with  $SAR$  = local specific absorption rate in mW/g  
 $E_{tot}$  = total field strength in V/m  
 $\sigma$  = conductivity in [mho/m] or [Siemens/m]  
 $\rho$  = equivalent tissue density in g/cm<sup>3</sup>

Note that the density is normally set to 1 (or 1.06), to account for actual brain density rather than the density of the simulation liquid. The power flow density is calculated assuming the excitation field to be a free space field.

$$P_{pwe} = E_{tot}^2 / 3770 \quad \text{or} \quad P_{pwe} = H_{tot}^2 \cdot 37.7$$

with  $P_{pwe}$  = equivalent power density of a plane wave in mW/cm<sup>2</sup>  
 $E_{tot}$  = total electric field strength in V/m  
 $H_{tot}$  = total magnetic field strength in A/m

## 2.4.9 Test equipment utilized

This table gives a complete overview of the SAR measurement equipment

Devices used during the test described in chapter 2.5. are marked ☒

	Manufacturer	Device	Type	Serial number	Date of last calibration )*
<input type="checkbox"/>	Schmid & Partner Engineering AG	Dosimetric E-Field Probe	ET3DV6	1558	March 22, 2002
<input checked="" type="checkbox"/>	Schmid & Partner Engineering AG	Dosimetric E-Field Probe	ET3DV6	1559	April 16, 2003
<input checked="" type="checkbox"/>	Schmid & Partner Engineering AG	900 MHz System Validation Dipole	D900V2	102	February 7, 2003
<input type="checkbox"/>	Schmid & Partner Engineering AG	1800 MHz System Validation Dipole	D1800V2	287	February 7, 2003
<input checked="" type="checkbox"/>	Schmid & Partner Engineering AG	1900 MHz System Validation Dipole	D1900V2	5d009	June 13, 2002
<input type="checkbox"/>	Schmid & Partner Engineering AG	2450 MHz System Validation Dipole	D2450V2	710	September 25, 2002
<input checked="" type="checkbox"/>	Schmid & Partner Engineering AG	Data acquisition electronics	DAE3V1	413	February 3, 2003
<input checked="" type="checkbox"/>	Schmid & Partner Engineering AG	Software	DASY 4 V4.1b	---	N/A
<input checked="" type="checkbox"/>	Schmid & Partner Engineering AG	Phantom	SAM	---	N/A
<input checked="" type="checkbox"/>	Rohde & Schwarz	Universal Radio Communication Tester	CMU 200	U-972406/000	August 30, 2002
<input type="checkbox"/>	Agilent	Network Analyser 300 kHz to 3 GHz	8753C	2936A00872	February 11, 2003
<input type="checkbox"/>	Agilent	Dielectric Probe Kit	85070C	US99360146	N/A
<input type="checkbox"/>	Agilent	Peak Power Analyzer	8990A	3128A00169	August 6, 2002
<input type="checkbox"/>	Agilent	Peak Power Sensor	84813A	3125A00111	September 18, 2002
<input checked="" type="checkbox"/>	Rohde & Schwarz	Signal Generator	SMPD	882.362/009	December 15, 2002
<input checked="" type="checkbox"/>	Amplifier Reasearch	Amplifier	25S1G4 (25 Watt)	20452	N/A
<input checked="" type="checkbox"/>	Agilent	Power Meter	438A	2804U01006	April 29, 2003
<input checked="" type="checkbox"/>	Agilent	Power Meter Sensor	8482A	2703A03025	April 29, 2003

)\* : Measurement devices are in a 1-year calibration cycle, validation dipoles are in a 2-year calibration cycle



## 2.4.10 Tissue simulating liquids : dielectric properties

The following materials are used for producing the tissue-equivalent materials

(liquids used for tests described in chapter 2.5. are marked with ☒) :

Ingredients (% of weight)	Frequency (MHz)					
	<input type="checkbox"/> 450	<input checked="" type="checkbox"/> 835	<input type="checkbox"/> 900	<input type="checkbox"/> 1800	<input checked="" type="checkbox"/> 1900	<input type="checkbox"/> 2450
frequency band						
Tissue Type	Head	Head	Head	Head	Head	Head
Water	38.56	41.45	41.05	52.64	52.64	62.7
Salt (NaCl)	3.95	1.45	1.35	0.36	0.36	0.5
Sugar	56.32	56.0	56.5	0.0	0.0	0.0
HEC	0.98	1.0	1.0	0.0	0.0	0.0
Bactericide	0.19	0.1	0.1	0.0	0.0	0.0
Triton X-100	0.0	0.0	0.0	0.0	0.0	36.8
DGBE	0.0	0.0	0.0	47.0	47.0	0.0

**Table 2: Head tissue dielectric properties**

Ingredients (% of weight)	Frequency (MHz)					
	<input type="checkbox"/> 450	<input checked="" type="checkbox"/> 835	<input type="checkbox"/> 900	<input type="checkbox"/> 1800	<input checked="" type="checkbox"/> 1900	<input type="checkbox"/> 2450
frequency band						
Tissue Type	Body	Body	Body	Body	Body	Body
Water	51.16	52.4	56.0	69.91	69.91	73.2
Salt (NaCl)	1.49	1.40	0.76	0.13	0.13	0.04
Sugar	46.78	45.0	41.76	0.0	0.0	0.0
HEC	0.52	1.0	1.21	0.0	0.0	0.0
Bactericide	0.05	0.1	0.27	0.0	0.0	0.0
Triton X-100	0.0	0.0	0.0	0.0	0.0	0.0
DGBE	0.0	0.0	0.0	29.96	29.96	26.7

**Table 3: Body tissue dielectric properties**

Salt: 99+% Pure Sodium Chloride

Sugar: 98+% Pure Sucrose

Water: De-ionized, 16MΩ+ resistivity

HEC: Hydroxyethyl Cellulose

DGBE: 99+% Di(ethylene glycol) butyl ether, [2-(2-butoxyethoxy)ethanol]

Triton X-100(ultra pure): Polyethylene glycol mono [4-(1,1,3,3-tetramethylbutyl)phenyl]ether



## 2.4.11 Tissue simulating liquids : parameters

Used Target Frequency [MHz]	Target Head Tissue		Measured Head Tissue		Measured Date
	Permittivity	Conductivity [S/m]	Permittivity	Conductivity [S/m]	
835	41.5	0.90	40.1	0.87	2003-07-30
900 )*	41.5	0.97	39.6	0.92	2003-07-30
1900	40.0	1.40	38.5	1.45	2003-07-28

Table 4: Parameter of the head tissue simulating liquid

Used Target Frequency [MHz]	Target Body Tissue		Measured Body Tissue		Measured Date
	Permittivity	Conductivity [S/m]	Permittivity	Conductivity [S/m]	
835	55.2	0.97	57.4	0.95	2003-07-30
900 )*	55.0	1.05	57.0	1.00	2003-07-30
1900	53.3	1.52	51.9	1.50	2003-07-29

Table 5: Parameter of the body tissue simulating liquid

)\* : Liquid parameters at 900 MHz were used during system validation with 900 MHz validation dipole.

Note: The dielectric properties have been measured using the contact probe method at 23.0°C.

## 2.4.12 Measurement uncertainties

## 2.4.13 Measurement uncertainty evaluation for SAR test

The overall combined measurement uncertainty of the measurement system is  $\pm 10,3\%$  ( $K=1$ ).

The expanded uncertainty( $k=2$ ) is assessed to be  $\pm 20.6\%$

This measurement uncertainty budget is suggested by IEEE P1528 and determined by Schmid & Partner Engineering AG. The breakdown of the individual uncertainties is as follows:

Error Sources	Uncertainty Value	Probability Distribution	Divisor	$c_i$ 1g	$c_i$ 10g	Standard Uncertainty 1g	Standard Uncertainty 10g	$v_i^2$ or $v_{eff}$
<b>Measurement System</b>								
Probe calibration	$\pm 4.8\%$	Normal	1	1	1	$\pm 4.8\%$	$\pm 4.8\%$	$\infty$
Axial isotropy	$\pm 4.7\%$	Rectangular	$\sqrt{3}$	0.7	0.7	$\pm 1.9\%$	$\pm 1.9\%$	$\infty$
Hemispherical isotropy	$\pm 9.6\%$	Rectangular	$\sqrt{3}$	0.7	0.7	$\pm 3.9\%$	$\pm 3.9\%$	$\infty$
Spatial resolution	$\pm 0.0\%$	Rectangular	$\sqrt{3}$	1	1	$\pm 0.0\%$	$\pm 0.0\%$	$\infty$
Boundary effects	$\pm 1.0\%$	Rectangular	$\sqrt{3}$	1	1	$\pm 0.6\%$	$\pm 0.6\%$	$\infty$
Probe linearity	$\pm 4.7\%$	Rectangular	$\sqrt{3}$	1	1	$\pm 2.7\%$	$\pm 2.7\%$	$\infty$
System detection limits	$\pm 1.0\%$	Rectangular	$\sqrt{3}$	1	1	$\pm 0.6\%$	$\pm 0.6\%$	$\infty$
Readout electronics	$\pm 1.0\%$	Normal	1	1	1	$\pm 1.0\%$	$\pm 1.0\%$	$\infty$
Response time	$\pm 0.8\%$	Rectangular	$\sqrt{3}$	1	1	$\pm 0.5\%$	$\pm 0.5\%$	$\infty$
Integration time	$\pm 2.6\%$	Rectangular	$\sqrt{3}$	1	1	$\pm 1.5\%$	$\pm 1.5\%$	$\infty$
RF ambient conditions	$\pm 3.0\%$	Rectangular	$\sqrt{3}$	1	1	$\pm 1.7\%$	$\pm 1.7\%$	$\infty$
Probe positioner	$\pm 0.4\%$	Rectangular	$\sqrt{3}$	1	1	$\pm 0.2\%$	$\pm 0.2\%$	$\infty$
Probe positioning	$\pm 2.9\%$	Rectangular	$\sqrt{3}$	1	1	$\pm 1.7\%$	$\pm 1.7\%$	$\infty$
Max. SAR evaluation	$\pm 1.0\%$	Rectangular	$\sqrt{3}$	1	1	$\pm 0.6\%$	$\pm 0.6\%$	$\infty$
<b>Test Sample Related</b>								
Device positioning	$\pm 2.9\%$	Normal	1	1	1	$\pm 2.9\%$	$\pm 2.9\%$	145
Device holder uncertainty	$\pm 3.6\%$	Normal	1	1	1	$\pm 3.6\%$	$\pm 3.6\%$	5
Power drift	$\pm 5.0\%$	Rectangular	$\sqrt{3}$	1	1	$\pm 2.9\%$	$\pm 2.9\%$	$\infty$
<b>Phantom and Set-up</b>								
Phantom uncertainty	$\pm 4.0\%$	Rectangular	$\sqrt{3}$	1	1	$\pm 2.3\%$	$\pm 2.3\%$	$\infty$
Liquid conductivity (target)	$\pm 5.0\%$	Rectangular	$\sqrt{3}$	0.64	0.43	$\pm 1.8\%$	$\pm 1.2\%$	$\infty$
Liquid conductivity (meas.)	$\pm 2.5\%$	Normal	1	0.64	0.43	$\pm 1.6\%$	$\pm 1.1\%$	$\infty$
Liquid permittivity (target)	$\pm 5.0\%$	Rectangular	$\sqrt{3}$	0.6	0.49	$\pm 1.7\%$	$\pm 1.4\%$	$\infty$
Liquid permittivity (meas.)	$\pm 2.5\%$	Normal	1	0.6	0.49	$\pm 1.5\%$	$\pm 1.2\%$	$\infty$
<b>Combined Uncertainty</b>						$\pm 10.3\%$	$\pm 10.0\%$	330
<b>Expanded Std. Uncertainty</b>						$\pm 20.6\%$	$\pm 20.1\%$	

**Table 6: Measurement uncertainties**

## 2.4.14 Measurement uncertainty evaluation for system validation

The overall combined measurement uncertainty of the measurement system is  $\pm 8.4\%$  ( $K=1$ ).

The expanded uncertainty( $k=2$ ) is assessed to be  $\pm 16.8\%$

This measurement uncertainty budget is suggested by IEEE P1528 and determined by Schmid & Partner Engineering AG. The breakdown of the individual uncertainties is as follows:

Error Sources	Uncertainty Value	Probability Distribution	Divisor	$c_i$ 1g	$c_i$ 10g	Standard Uncertainty 1g	Standard Uncertainty 10g	$v_i^2$ or $v_{eff}$
<b>Measurement System</b>								
Probe calibration	$\pm 4.8\%$	Normal	1	1	1	$\pm 4.8\%$	$\pm 4.8\%$	$\infty$
Axial isotropy	$\pm 4.7\%$	Rectangular	$\sqrt{3}$	0.7	0.7	$\pm 1.9\%$	$\pm 1.9\%$	$\infty$
Hemispherical isotropy	$\pm 0.0\%$	Rectangular	$\sqrt{3}$	0.7	0.7	$\pm 0.0\%$	$\pm 3.9\%$	$\infty$
Boundary effects	$\pm 1.0\%$	Rectangular	$\sqrt{3}$	1	1	$\pm 0.6\%$	$\pm 0.6\%$	$\infty$
Probe linearity	$\pm 4.7\%$	Rectangular	$\sqrt{3}$	1	1	$\pm 2.7\%$	$\pm 2.7\%$	$\infty$
System detection limits	$\pm 1.0\%$	Rectangular	$\sqrt{3}$	1	1	$\pm 0.6\%$	$\pm 0.6\%$	$\infty$
Readout electronics	$\pm 1.0\%$	Normal	1	1	1	$\pm 1.0\%$	$\pm 1.0\%$	$\infty$
Response time	$\pm 0.0\%$	Rectangular	$\sqrt{3}$	1	1	$\pm 0.0\%$	$\pm 0.0\%$	$\infty$
Integration time	$\pm 0.0\%$	Rectangular	$\sqrt{3}$	1	1	$\pm 0.0\%$	$\pm 0.0\%$	$\infty$
RF ambient conditions	$\pm 3.0\%$	Rectangular	$\sqrt{3}$	1	1	$\pm 1.7\%$	$\pm 1.7\%$	$\infty$
Probe positioner	$\pm 0.4\%$	Rectangular	$\sqrt{3}$	1	1	$\pm 0.2\%$	$\pm 0.2\%$	$\infty$
Probe positioning	$\pm 2.9\%$	Rectangular	$\sqrt{3}$	1	1	$\pm 1.7\%$	$\pm 1.7\%$	$\infty$
Max. SAR evaluation	$\pm 1.0\%$	Rectangular	$\sqrt{3}$	1	1	$\pm 0.6\%$	$\pm 0.6\%$	$\infty$
<b>Test Sample Related</b>								
Dipole axis to liquid distance	$\pm 2.0\%$	Normal	1	1	1	$\pm 1.2\%$	$\pm 1.2\%$	$\infty$
Power drift	$\pm 4.7\%$	Rectangular	$\sqrt{3}$	1	1	$\pm 2.7\%$	$\pm 2.7\%$	$\infty$
<b>Phantom and Set-up</b>								
Phantom uncertainty	$\pm 4.0\%$	Rectangular	$\sqrt{3}$	1	1	$\pm 2.3\%$	$\pm 2.3\%$	$\infty$
Liquid conductivity (target)	$\pm 5.0\%$	Rectangular	$\sqrt{3}$	0.64	0.43	$\pm 1.8\%$	$\pm 1.2\%$	$\infty$
Liquid conductivity (meas.)	$\pm 2.5\%$	Normal	1	0.64	0.43	$\pm 1.6\%$	$\pm 1.1\%$	$\infty$
Liquid permittivity (target)	$\pm 5.0\%$	Rectangular	$\sqrt{3}$	0.6	0.49	$\pm 1.7\%$	$\pm 1.4\%$	$\infty$
Liquid permittivity (meas.)	$\pm 2.5\%$	Normal	1	0.6	0.49	$\pm 1.5\%$	$\pm 1.2\%$	$\infty$
<b>Combined Uncertainty</b>						<b><math>\pm 8.4\%</math></b>	<b><math>\pm 8.1\%</math></b>	
<b>Expanded Std. Uncertainty</b>						<b><math>\pm 16.8\%</math></b>	<b><math>\pm 16.2\%</math></b>	

**Table 7: Measurement uncertainties**

## 2.4.15 System validation

The system validation is performed for verifying the accuracy of the complete measurement system and performance of the software. The system validation is performed with tissue equivalent material according to IEEE P1528 (described above). The following table shows validation results for all frequency bands and tissue liquids used during the tests of the test item described in chapter 1.5. (graphic plot(s) see annex 1).

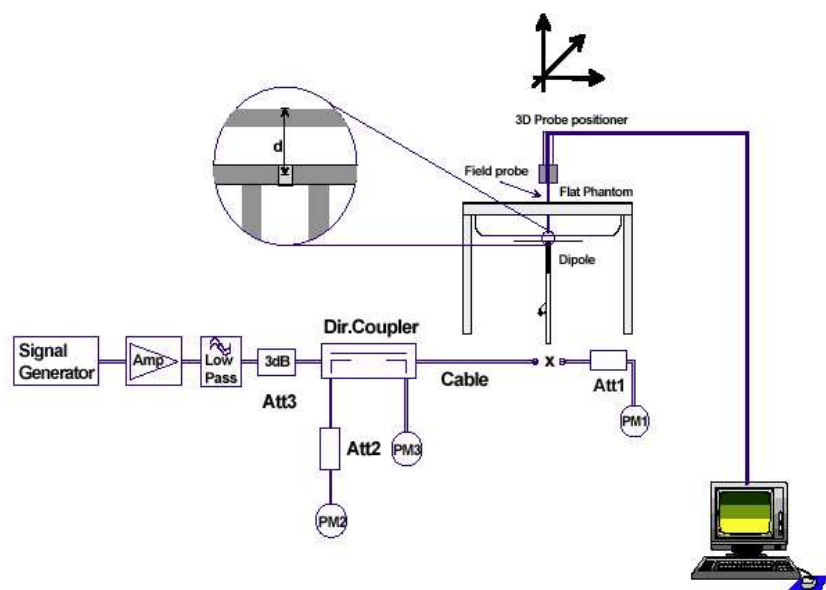
Validation Kit	Frequency	Target Peak SAR (1000 mW) (+/- 10%)	Target SAR <sub>1g</sub> (1000 mW) (+/- 10%)	Measured Peak SAR	Measured SAR <sub>1g</sub>	Measured date
D900V2 S/N: 102	900 MHz head	15.8 mW/g	10.6 mW/g	15.1 mW/g	10.4 mW/g	2003-07-30
D900V2 S/N: 102	900 MHz body	16.3 mW/g	11.1 mW/g	14.9 mW/g	10.4 mW/g	2003-07-30
D1900V2 S/N: 5d009	1900 MHz head	71.6 mW/g	40.4 mW/g	69.2 mW/g	39.7 mW/g	2002-07-28
D1900V2 S/N: 5d009	1900 MHz body	70.0 mW/g	40.0 mW/g	63.3 mW/g	37.6 mW/g	2003-07-29

**Table 8: Results system validation**

## 2.4.16 Validation procedure

The validation is performed by using a validation dipole which is positioned parallel to the planar part of the SAM phantom at the reference point. The distance of the dipole to the SAM phantom is determined by a plexiglass spacer. The dipole is connected to the signal source consisting of signal generator and amplifier via an directional coupler, N-connector cable and adaption to SMA. It is fed with a power of 1000 mW. To adjust this power a power meter is used. The power sensor is connected to the cable before the validation to measure the power at this point and do adjustments at the signal generator. At the outputs of the directional coupler both return loss as well as forward power are controlled during the validation to make sure that emitted power at the dipole is kept constant. This can also be checked by the power drift measurement after the test (result on plot).

Validation results have to be equal or near the values determined during dipole calibration (target SAR in table above) with the relevant liquids and test system.



## 2.5 Test results (Head and Body SAR)

The table contains the measured SAR values averaged over a mass of 1 g					
Channel / frequency	Position	Left hand position	Right hand position	Limit	Liquid temperature
661 / 1880.0 MHz	cheek	0.315 W/kg	<b>0.369</b> W/kg	1.6 W/kg	22.6/22.4 °C
661 / 1880.0 MHz	tilted 15°	0.284 W/kg	0.319 W/kg	1.6 W/kg	22.0/22.2 °C

**Table 9: Test results (Head SAR at 1900 Mhz)**

Note : The SAR test shall be performed at the high, middle and low frequency channels of each operating mode. If the SAR measured at mid-band channel for each test configuration is at least 3.0 dB lower than the SAR limit ( $< 0.8$  W/kg) , testing at the high and low channels is optional.

The table contains the measured SAR values averaged over a mass of 1 g					
Channel / frequency	Position	Accessory	Body worn	Limit	Liquid temperature
661 / 1880.0 MHz	front	headset	0.0613 W/kg	1.6 W/kg	23.0 °C
661 / 1880.0 MHz	rear	headset	0.321 W/kg	1.6 W/kg	21.8 °C
661 / 1880.0 MHz	front	car kit	0.0509 W/kg	1.6 W/kg	22.4 °C
661 / 1880.0 MHz	rear	car kit	0.241 W/kg	1.6 W/kg	22.2 °C
661 / 1880.0 MHz	front	data cable	0.0633 W/kg	1.6 W/kg	23.0 °C
661 / 1880.0 MHz	rear	data cable	0.275 W/kg	1.6 W/kg	22.0 °C
661 / 1880.0 MHz	front	cigar lighter adapter	0.0612 W/kg	1.6 W/kg	22.8 °C
661 / 1880.0 MHz	rear	cigar lighter adapter	<b>0.338</b> W/kg	1.6 W/kg	22.0 °C

**Table 10: Test results (Body SAR at 1900 MHz)**

Note : The SAR test shall be performed at the high, middle and low frequency channels of each operating mode. If the SAR measured at mid-band channel for each test configuration is at least 3.0 dB lower than the SAR limit ( $< 0.8$  W/kg) , testing at the high and low channels is optional.

The table contains the measured SAR values averaged over a mass of 1 g					
Channel / frequency	Position	Left hand position	Right hand position	Limit	Liquid temperature
192 / 836.6 MHz	cheek	0.432 W/kg	<b>0.477</b> W/kg	1.6 W/kg	22.8/23.2 °C
192 / 836.6 MHz	tilted 15°	0.257 W/kg	0.281 W/kg	1.6 W/kg	22.8/23.0 °C

**Table 11: Test results (Head SAR at 850 MHz)**

Note : The SAR test shall be performed at the high, middle and low frequency channels of each operating mode. If the SAR measured at mid-band channel for each test configuration is at least 3.0 dB lower than the SAR limit ( $< 0.8$  W/kg) , testing at the high and low channels is optional.

The table contains the measured SAR values averaged over a mass of 1 g					
Channel / frequency	Position	Accessory	Body worn	Limit	Liquid temperature
192 / 836.6 MHz	front	headset	0.0755 W/kg	1.6 W/kg	23.2 °C
192 / 836.6 MHz	rear	headset	0.248 W/kg	1.6 W/kg	23.2 °C
192 / 836.6 MHz	front	car kit	0.0843 W/kg	1.6 W/kg	23.0 °C
192 / 836.6 MHz	rear	car kit	0.293 W/kg	1.6 W/kg	23.0 °C
192 / 836.6 MHz	front	data cable	0.0623 W/kg	1.6 W/kg	23.2 °C
192 / 836.6 MHz	rear	data cable	0.236 W/kg	1.6 W/kg	23.0 °C
192 / 836.6 MHz	front	cigar lighter adapter	0.107 W/kg	1.6 W/kg	23.0 °C
192 / 836.6 MHz	rear	cigar lighter adapter	<b>0.310</b> W/kg	1.6 W/kg	23.2 °C

**Table 12: Test results (Body SAR at 850 MHz)**

Note : The SAR test shall be performed at the high, middle and low frequency channels of each operating mode. If the SAR measured at mid-band channel for each test configuration is at least 3.0 dB lower than the SAR limit ( $< 0.8$  W/kg) , testing at the high and low channels is optional.

## 2.5.1 Description of test procedures

The device was tested using a CMU 200 communications tester as controller unit to set test channels and maximum output power to the DUT, as well as for measuring the conducted peak power. Test positions for head position as described in the tables above are in accordance with the specified test standard.

Tests in body position were performed with 15 mm air gap between DUT and SAM to simulate the use of a non-metallic belt-clip or holster.

## 2.6 Test results (conducted power measurement)

For the measurements a Rohde & Schwarz Radio Communication Tester CMU 200 was used.

The output power was measured using a integrated RF connector and attached RF cable.

The conducted output power was measured before and after each SAR measurement. The resulting power values were within a 0.2 dB tolerance of the values shown below.

PCS 1900	
Channel	peak power
661	30.4 dBm
PCS 850	
Channel	peak power
192	33.2 dBm

**Table 13: Test results conducted peak power measurement**



## Annex 1 System performance verification

Date/Time: 07/30/03 09:38:12

### SystemPerformanceCheck-D900 body

**DUT: Dipole 900 MHz; Type: D900V2; Serial: D900V2 -SN:102****Program: System Performance Check at 900 MHz**

Communication System: CW; Frequency: 900 MHz; Duty Cycle: 1:1

Medium: M900( $\sigma = 1 \text{ mho/m}$   $\epsilon_r = 57$   $\rho = 1000 \text{ kg/m}^3$ )

Phantomsection: Flat Section

DASY4 Configuration:

- Probe: ET3DV6 - SN1559; ConvF(6.56.56.5); Calibrated: 16.04.2003
- Sensor-Surface: 4mm (Mechanical SurfaceDetection)
- Electronics: DAE3 Sn413; Calibrated: 25.04.2003
- Phantom: SAM 12; Type: SAM; Serial: 1043
- Measurement SW: DASY4V4.1 Build 47; Postprocessing SW: SEMCADV1.6 Build 115

**d=15mmPin=1000mW/Area Scan (61x81x1):** Measurement grid: dx=15mmdy=15mm**d=15mmPin=1000mW/Zoom Scan (7x7x7)(7x7x7)/Cube 0:** Measurement grid: dx=5mmdy=5mmdz=5mm

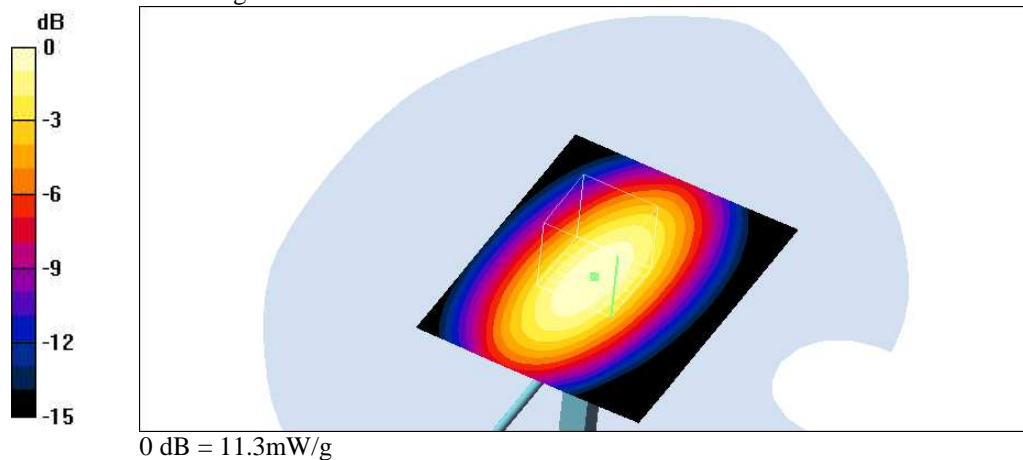
Peak SAR(extrapolated) = 14.9 W/kg

SAR(1 g) = 10.4 mW/g; SAR(10 g) = 6.72mW/g

Reference Value = 110.9 V/m

Power Drift = -0.12 dB

Maximum valueof SAR = 11.3 mW/g

**Additional information:**

conducted peak power :1000 mW

ambient temperature: 24.0 °C; liquid temperature: 23.2°C

## SystemPerformanceCheck-D900 head

**DUT: Dipole 900 MHz; Type: D900V2; Serial: D900V2 -SN:102**

**Program: System Performance Check at 900 MHz**

Communication System: CW; Frequency: 900 MHz; Duty Cycle: 1:1

Medium: HSL900 ( $\sigma = 0.92 \text{ mho/m}$   $\epsilon_r = 39.6$   $\rho = 1000 \text{ kg/m}^3$ )

Phantom section: Flat Section

DASY4 Configuration:

- Probe: ET3DV6 - SN1559; ConvF(6.76.76.7); Calibrated: 16.04.2003
- Sensor-Surface: 4mm (Mechanical SurfaceDetection)
- Electronics: DAE3 Sn413; Calibrated: 25.04.2003
- Phantom: SAM 12; Type: SAM; Serial: 1043
- Measurement SW: DASY4V4.1 Build 47; Postprocessing SW: SEMCADV1.6 Build 115

**d=15mmPin=1000mW/Area Scan (61x81x1):** Measurement grid: dx=15mmdy=15mm

**d=15mmPin=1000mW/Zoom Scan (7x7x7) (7x7x7)/Cube0:** Measurement grid: dx=5mmdy=5mmdz=5mm

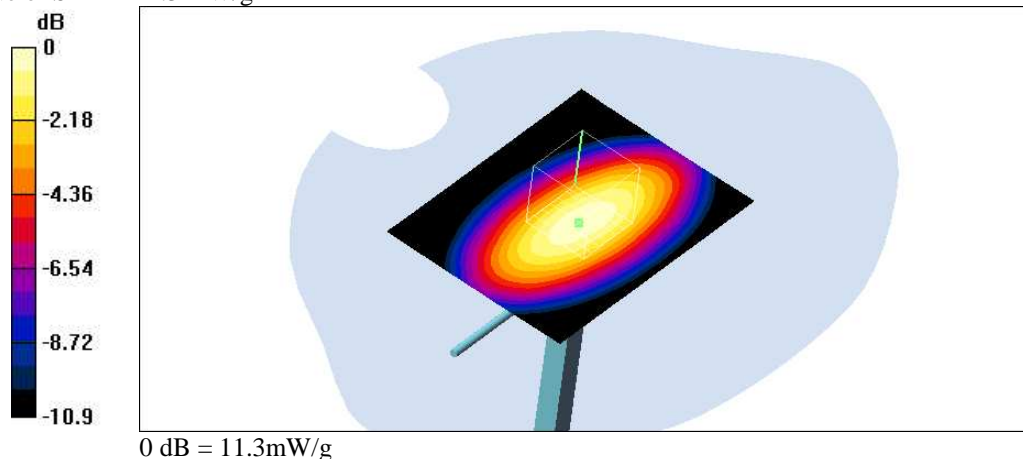
Peak SAR (extrapolated) = 15.1 W/kg

SAR(1 g) = 10.4 mW/g; SAR(10 g) = 6.67 mW/g

Reference Value = 113.8 V/m

Power Drift = 0.02 dB

Maximum value of SAR = 11.3 mW/g



### Additional information:

conducted peak power :1000 mW

ambient temperature: 24.5 °C; liquid temperature: 23.2°C

## SystemPerformanceCheck-D1900 body

**DUT: Dipole 1900 MHz; Type: D1900V2; Serial: D1900V2 -SN:5d009**

**Program: System Performance Check at 1900 MHz**

Communication System: CW; Frequency: 1900 MHz; Duty Cycle: 1:1

Medium: M1900 ( $\sigma = 1.5 \text{ mho/m}$   $\epsilon_r = 51.9$   $\rho = 1000 \text{ kg/m}^3$ )

Phantom section: Flat Section

DASY4 Configuration:

- Probe: ET3DV6 - SN1559; ConvF(4.84.84.8); Calibrated: 16.04.2003
- Sensor-Surface: 4mm (Mechanical SurfaceDetection)
- Electronics: DAE3 Sn413; Calibrated: 25.04.2003
- Phantom: SAM 12; Type: SAM; Serial: 1043
- Measurement SW: DASY4V4.1 Build 47; Postprocessing SW: SEMCADV1.6 Build 115

**d=10mmPin=1000mW/Area Scan (61x61x1):** Measurement grid: dx=15mmdy=15mm

**d=10mmPin=1000mW/Zoom Scan (7x7x7) (7x7x7)/Cube0:** Measurement grid: dx=5mmdy=5mmdz=5mm

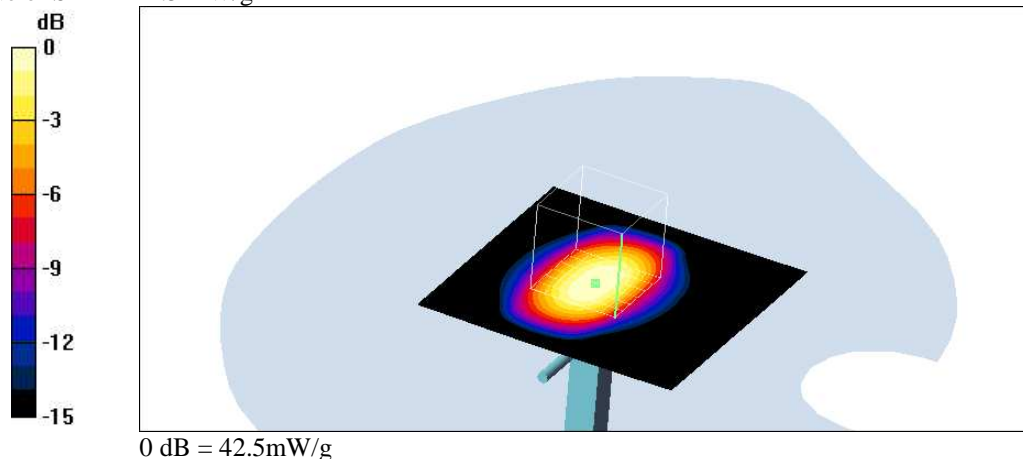
Peak SAR (extrapolated) = 63.3 W/kg

SAR(1 g) = 37.6 mW/g; SAR(10 g) = 20.2 mW/g

Reference Value = 179.1 V/m

Power Drift = -0.01 dB

Maximum value of SAR = 42.5 mW/g



### Additional information:

conducted peak power: 1000 mW

ambient temperature: 24.8°C; liquid temperature: 23.8°C

## SystemPerformanceCheck-D1900 head

**DUT: Dipole 1900 MHz; Type: D1900V2; Serial: D1900V2 -SN:5d009**

**Program: System Performance Check at 1900 MHz**

Communication System: CW; Frequency: 1900 MHz; Duty Cycle: 1:1

Medium: HSL1900 ( $\sigma = 1.45 \text{ mho/m}$ ,  $\epsilon_r = 38.5$ ,  $\rho = 1000 \text{ kg/m}^3$ )

Phantom section: Flat Section

DASY4 Configuration:

- Probe: ET3DV6 - SN1559; ConvF(5.25.25.2); Calibrated: 16.04.2003
- Sensor-Surface: 4mm (Mechanical SurfaceDetection)
- Electronics: DAE3 Sn413; Calibrated: 25.04.2003
- Phantom: SAM 12; Type: SAM; Serial: 1043
- Measurement SW: DASY4V4.1 Build 47; Postprocessing SW: SEMCADV1.6 Build 115

**d=10mmPin=1000mW/Area Scan (61x61x1):** Measurement grid: dx=15mmdy=15mm

**d=10mmPin=1000mW/Zoom Scan (7x7x7) (7x7x7)/Cube0:** Measurement grid: dx=5mmdy=5mmdz=5mm

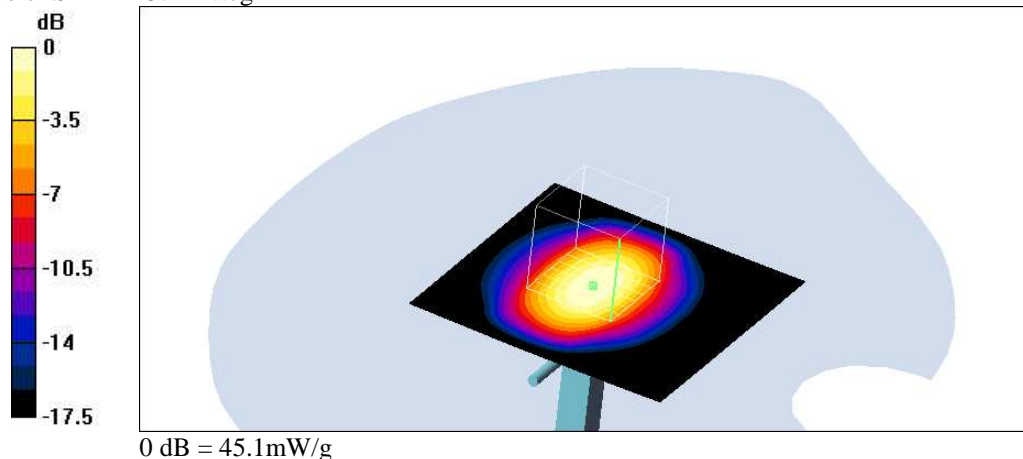
Peak SAR (extrapolated) = 69.2 W/kg

SAR(1 g) = 39.7 mW/g; SAR(10 g) = 20.6 mW/g

Reference Value = 185.1 V/m

Power Drift = -0.02 dB

Maximum value of SAR = 45.1 mW/g



### Additional information:

conducted peak power :1000 W

ambient temperature: 24.0°C; liquid temperature:23.2°C

**Annex 2 Measurement results (printout from DASY<sup>TM</sup>)**

Date/Time: 07/28/03 18:09:49

**P1528\_OET65-LeftHandSide-GSM1900****DUT: Sagem; Type: MyX-2a; Serial:351816.95.000121-0****Program: Compliance Testing: P1528 and OET65 Protocol(Left-Hand Side)**

Communication System: PCS 1900; Frequency: 1880 MHz;Duty Cycle:1:8

Medium: HSL1900 ( $\sigma = 1.45 \text{ mho/m}$   $\epsilon_r = 38.5$   $\rho = 1000\text{kg/m}^3$ )

Phantom section: Left Section

DASY4 Configuration:

- Probe: ET3DV6 - SN1559; ConvF(5.25.25.2);Calibrated: 16.04.2003
- Sensor-Surface: 4mm (Mechanical SurfaceDetection)
- Electronics: DAE3 Sn413; Calibrated: 25.04.2003
- Phantom:SAM 12; Type: SAM; Serial: 1043
- Measurement SW: DASY4V4.1 Build 47;Postprocessing SW: SEMCADV1.6 Build 115

**Touch position - Middle/Area Scan (51x91x1):** Measurement grid:dx=15mmdy=15mm**Touch position - Middle/ZoomScan (7x7x7) (7x7x7)/Cube 0:** Measurement grid: dx=5mmdy=5mmdz=5mm

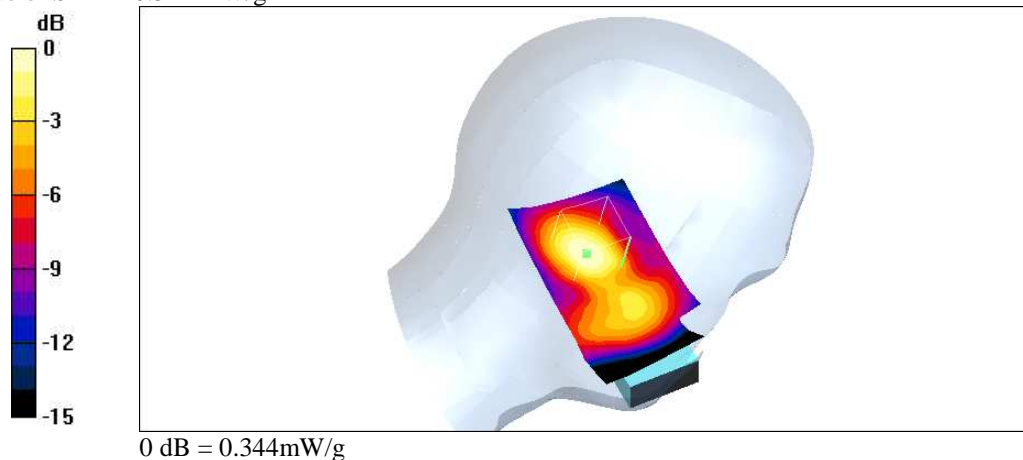
Peak SAR (extrapolated) = 0.491 W/kg

SAR(1 g) = 0.315 mW/g; SAR(10g) = 0.18 mW/g

Reference Value = 13.9 V/m

Power Drift = -0.03dB

Maximum value of SAR = 0.344 mW/g

**Additional information:**

conducted peak power :see chapter 2.6

ambient temperature: 24.4 °C; liquid temperature: 22.6°C

## P1528\_OET65-LeftHandSide-GSM1900

**DUT: Sagem; Type: MyX-2a; Serial:351816.95.000121-0**

**Program: Compliance Testing: P1528 and OET65 Protocol(Left-Hand Side)**

Communication System: PCS 1900; Frequency: 1880 MHz;Duty Cycle:1:8

Medium: HSL1900 ( $\sigma = 1.45 \text{ mho/m}$   $\epsilon_r = 38.5$   $\rho = 1000\text{kg/m}^3$ )

Phantom section: Left Section

DASY4 Configuration:

- Probe: ET3DV6 - SN1559; ConvF(5.25.25.2);Calibrated: 16.04.2003
- Sensor-Surface: 4mm (Mechanical SurfaceDetection)
- Electronics: DAE3 Sn413; Calibrated: 25.04.2003
- Phantom: SAM 12; Type: SAM; Serial: 1043
- Measurement SW: DASY4V4.1 Build 47;Postprocessing SW: SEMCADV1.6 Build 115

**Tilt position - Middle/Area Scan (51x91x1):** Measurement grid:dx=15mmdy=15mm

**Tilt position - Middle/ZoomScan (7x7x7) (7x7x7)/Cube 0:** Measurement grid: dx=5mmdz=5mm

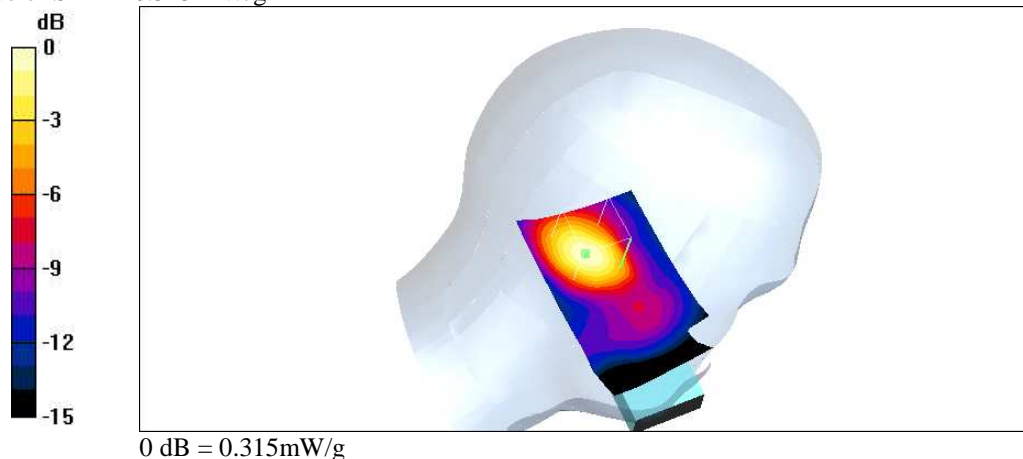
Peak SAR (extrapolated) = 0.451 W/kg

SAR(1 g) = 0.284 mW/g; SAR(10g) = 0.158 mW/g

Reference Value = 14.1 V/m

Power Drift = -0.04dB

Maximum value of SAR = 0.315 mW/g



### Additional information:

conducted peak power :see chapter 2.6

ambient temperature: 24.2 °C; liquid temperature: 22.4°C

## P1528\_OET65-RightHandSide-GSM1900

**DUT: Sagem; Type: MyX-2a; Serial:351816.95.000121-0**

**Program: Compliance Testing: P1528 and OET65 Protocol(Right-Hand Side)**

Communication System: PCS 1900; Frequency: 1880 MHz;Duty Cycle:1:8

Medium: HSL1900 ( $\sigma = 1.45 \text{ mho/m}$   $\epsilon_r = 38.5$   $\rho = 1000\text{kg/m}^3$ )

Phantom section: Right Section

DASY4 Configuration:

- Probe: ET3DV6 - SN1559; ConvF(5.25.25.2);Calibrated: 16.04.2003
- Sensor-Surface: 4mm (Mechanical SurfaceDetection)
- Electronics: DAE3 Sn413; Calibrated: 25.04.2003
- Phantom: SAM 12; Type: SAM; Serial: 1043
- Measurement SW: DASY4V4.1 Build 47;Postprocessing SW: SEMCADV1.6 Build 115

**Touch position - Middle/Area Scan (51x91x1):** Measurement grid:dx=15mmdy=15mm

**Touch position - Middle/ZoomScan (7x7x7) (7x7x7)/Cube 0:** Measurement grid: dx=5mmdy=5mmdz=5mm

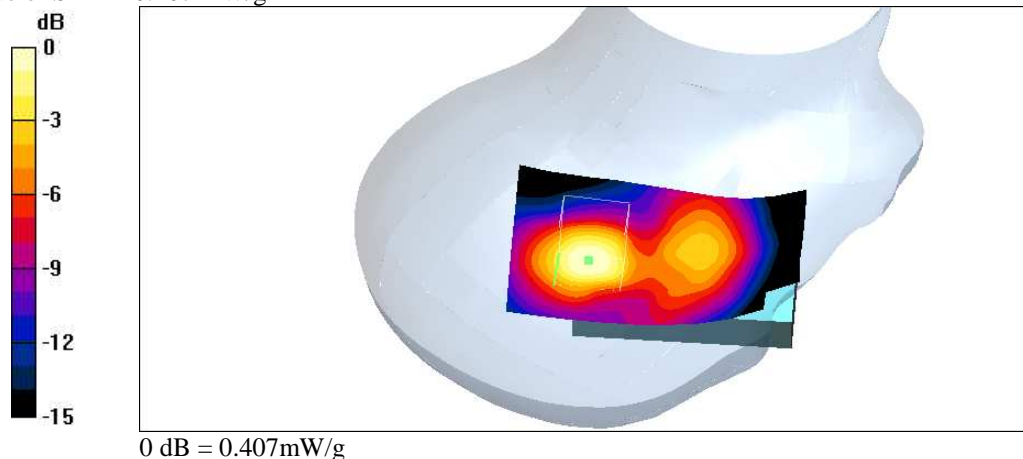
Peak SAR (extrapolated) = 0.597 W/kg

SAR(1 g) = 0.369 mW/g; SAR(10g) = 0.201 mW/g

Reference Value = 17.7 V/m

Power Drift = -0.08dB

Maximum value of SAR = 0.407 mW/g



### Additional information:

conducted peak power :see chapter 2.6

ambient temperature: 24.5 °C; liquid temperature: 22.0°C

## P1528\_OET65-RightHandSide-GSM1900

**DUT: Sagem; Type: MyX-2a; Serial:351816.95.000121-0**

**Program: Compliance Testing: P1528 and OET65 Protocol(Right-Hand Side)**

Communication System: PCS 1900; Frequency: 1880 MHz;Duty Cycle:1:8

Medium: HSL1900 ( $\sigma = 1.45 \text{ mho/m}$   $\epsilon_r = 38.5$   $\rho = 1000\text{kg/m}^3$ )

Phantom section: Right Section

DASY4 Configuration:

- Probe: ET3DV6 - SN1559; ConvF(5.25.25.2);Calibrated: 16.04.2003
- Sensor-Surface: 4mm (Mechanical SurfaceDetection)
- Electronics: DAE3 Sn413; Calibrated: 25.04.2003
- Phantom: SAM 12; Type: SAM; Serial: 1043
- Measurement SW: DASY4V4.1 Build 47;Postprocessing SW: SEMCADV1.6 Build 115

**Tilt position - Middle/Area Scan (51x91x1):** Measurement grid:dx=15mmdy=15mm

**Tilt position - Middle/ZoomScan (7x7x7) (7x7x7)/Cube 0:** Measurement grid: dx=5mmdy=5mmdz=5mm

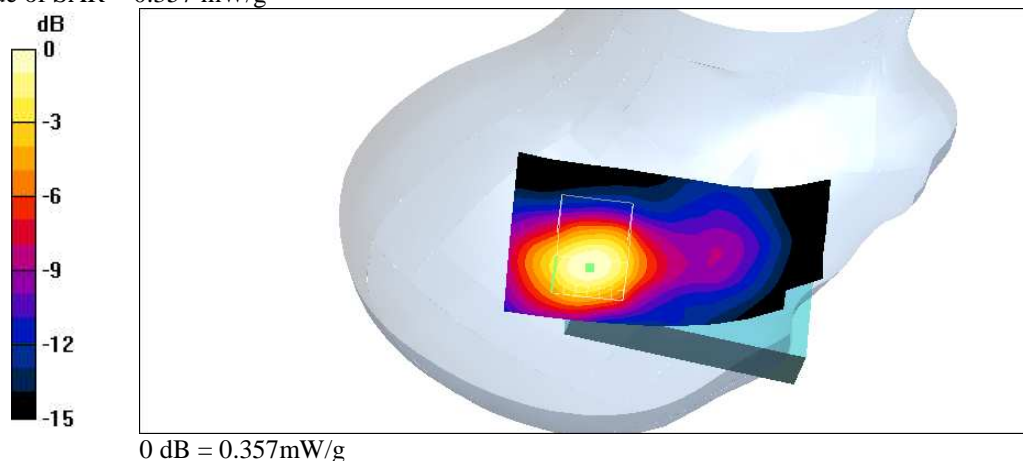
Peak SAR (extrapolated) = 0.526 W/kg

SAR(1 g) = 0.319 mW/g; SAR(10g) = 0.171 mW/g

Reference Value = 15.3 V/m

Power Drift = -0.04dB

Maximum value of SAR = 0.357 mW/g



### Additional information:

conducted peak power :see chapter 2.6

ambient temperature: 24.4 °C; liquid temperature: 22.2°C



## P1528\_OET65-LeftHandSide-GSM850

**DUT: Sagem; Type: MyX-2a; Serial:351816.95.000121-0**

**Program: Compliance Testing: P1528 and OET65 Protocol(Left-Hand Side)**

Communication System: PCS 850; Frequency: 836.6 MHz;Duty Cycle:1:8

Medium: HSL850 ( $\sigma = 0.87 \text{ mho/m}$   $\epsilon_r = 40.1$   $\rho = 1000\text{kg/m}^3$ )

Phantom section: Left Section

DASY4 Configuration:

- Probe: ET3DV6 - SN1559; ConvF(6.76.76.7);Calibrated: 16.04.2003
- Sensor-Surface: 4mm (Mechanical SurfaceDetection)
- Electronics: DAE3 Sn413; Calibrated: 25.04.2003
- Phantom: SAM 12; Type: SAM; Serial: 1043
- Measurement SW: DASY4V4.1 Build 47;Postprocessing SW: SEMCADV1.6 Build 115

**Touch position - Middle/Area Scan (51x91x1):** Measurement grid:dx=15mmdy=15mm

**Touch position - Middle/ZoomScan (7x7x7) (7x7x7)/Cube 0:** Measurement grid: dx=5mmdy=5mmdz=5mm

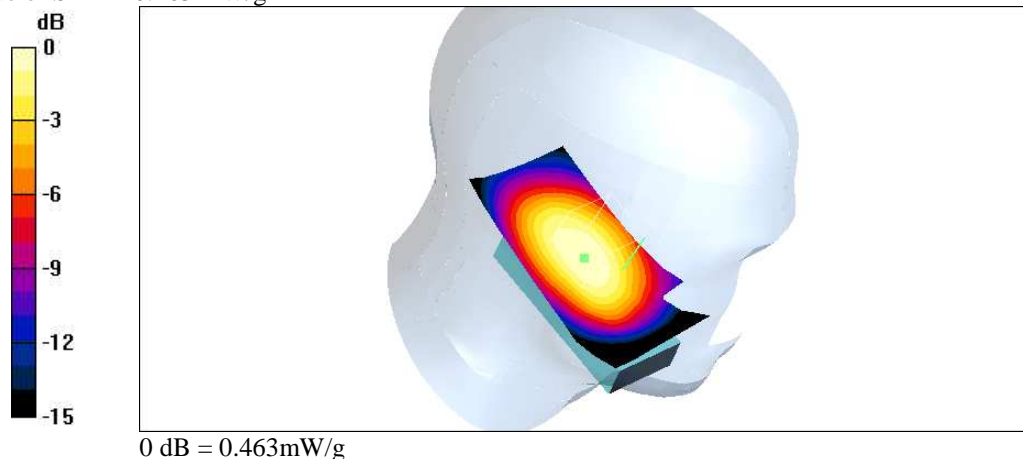
Peak SAR (extrapolated) = 0.525 W/kg

SAR(1 g) = 0.432 mW/g; SAR(10g) = 0.31 mW/g

Reference Value = 17.7 V/m

Power Drift = -0.05dB

Maximum value of SAR = 0.463 mW/g



### Additional information:

conducted peak power :see chapter 2.6

ambient temperature: 24.6 °C; liquid temperature: 22.8°C

## P1528\_OET65-LeftHandSide-GSM850

**DUT: Sagem; Type: MyX-2a; Serial:351816.95.000121-0**

**Program: Compliance Testing: P1528 and OET65 Protocol(Left-Hand Side)**

Communication System: PCS 850; Frequency: 836.6 MHz;Duty Cycle:1:8

Medium: HSL850 ( $\sigma = 0.87 \text{ mho/m}$   $\epsilon_r = 40.1$   $\rho = 1000\text{kg/m}^3$ )

Phantom section: Left Section

DASY4 Configuration:

- Probe: ET3DV6 - SN1559; ConvF(6.76.76.7);Calibrated: 16.04.2003
- Sensor-Surface: 4mm (Mechanical SurfaceDetection)
- Electronics: DAE3 Sn413; Calibrated: 25.04.2003
- Phantom:SAM 12; Type: SAM; Serial: 1043
- Measurement SW: DASY4V4.1 Build 47;Postprocessing SW: SEMCADV1.6 Build 115

**Tilt position - Middle/Area Scan (51x91x1):** Measurement grid:dx=15mmdy=15mm

**Tilt position - Middle/Zoom Scan (7x7x7) (7x7x7)/Cube 0:**Measurement grid: dx=5mmdy=5mmdz=5mm

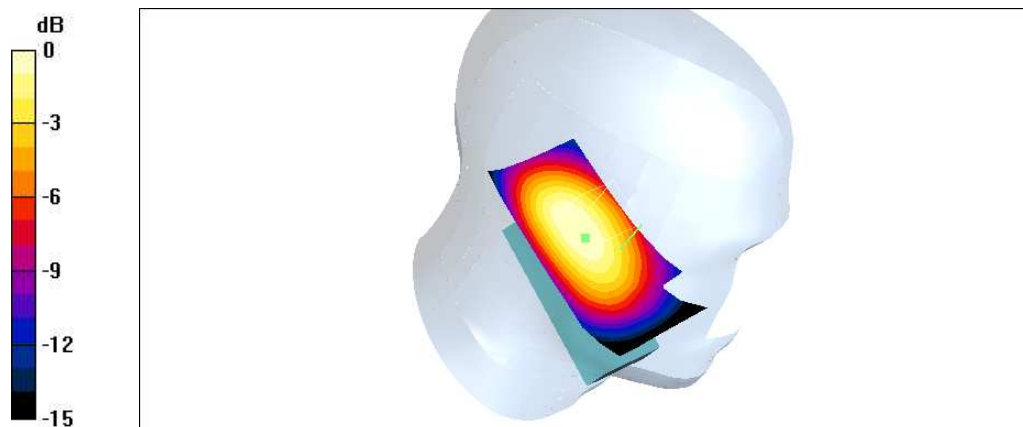
Peak SAR (extrapolated) = 0.319W/kg

SAR(1 g) = 0.257 mW/g; SAR(10 g) = 0.184 mW/g

Reference Value = 16.6V/m

Power Drift = -0.02 dB

Maximum value of SAR = 0.271mW/g



0 dB = 0.276mW/g

### Additional information:

position or distance of DUT to SAM :

conducted peak power : see chapter 2.6

ambient temperature: 24.6 °C; liquid temperature: 22.8 °C

## P1528\_OET65-RightHandSide-GSM850

**DUT: Sagem; Type: MyX-2a; Serial:351816.95.000121-0**

**Program: Compliance Testing: P1528 and OET65 Protocol(Right-Hand Side)**

Communication System: PCS 850; Frequency: 836.6 MHz;Duty Cycle:1:8

Medium: HSL850 ( $\sigma = 0.87 \text{ mho/m}$   $\epsilon_r = 40.1$   $\rho = 1000\text{kg/m}^3$ )

Phantom section: Right Section

DASY4 Configuration:

- Probe: ET3DV6 - SN1559; ConvF(6.76.76.7);Calibrated: 16.04.2003
- Sensor-Surface: 4mm (Mechanical SurfaceDetection)
- Electronics: DAE3 Sn413; Calibrated: 25.04.2003
- Phantom: SAM 12; Type: SAM; Serial: 1043
- Measurement SW: DASY4V4.1 Build 47;Postprocessing SW: SEMCADV1.6 Build 115

**Touch position - Middle/Area Scan (51x91x1):** Measurement grid:dx=15mmdy=15mm

**Touch position - Middle/ZoomScan (7x7x7) (7x7x7)/Cube 0:** Measurement grid: dx=5mmdy=5mmdz=5mm

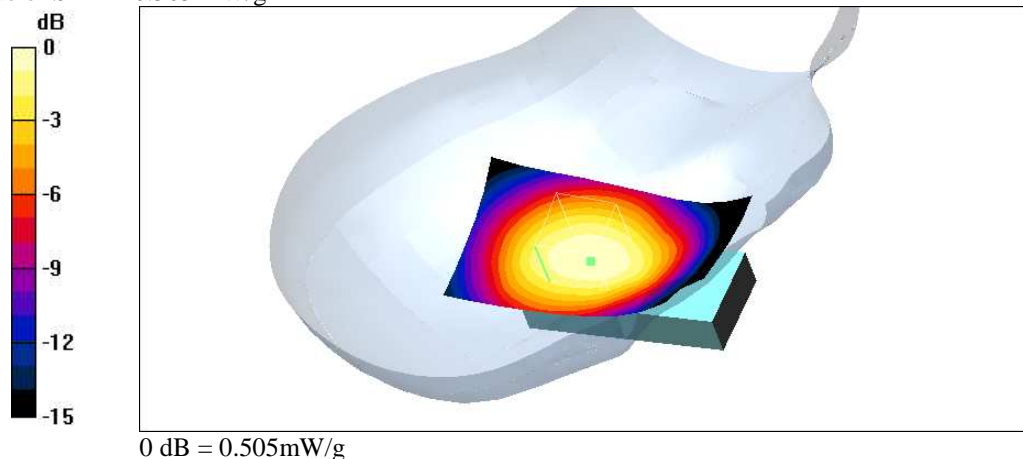
Peak SAR (extrapolated) = 0.614 W/kg

SAR(1 g) = 0.477 mW/g; SAR(10g) = 0.333 mW/g

Reference Value = 20.6 V/m

Power Drift = -0.08dB

Maximum value of SAR = 0.505 mW/g



### Additional information:

conducted peak power :see chapter 2.6

ambient temperature: 24.5 °C; liquid temperature:23.2°C

**P1528\_OET65-RightHandSide-GSM850****DUT: Sagem; Type: MyX-2a; Serial:351816.95.000121-0****Program: Compliance Testing: P1528 and OET65 Protocol(Right-Hand Side)**

Communication System: PCS 850; Frequency: 836.6 MHz;Duty Cycle:1:8

Medium: HSL850 ( $\sigma = 0.87 \text{ mho/m}$   $\epsilon_r = 40.1$   $\rho = 1000\text{kg/m}^3$ )

Phantom section: Right Section

DASY4 Configuration:

- Probe: ET3DV6 - SN1559; ConvF(6.76.76.7);Calibrated: 16.04.2003
- Sensor-Surface: 4mm (Mechanical SurfaceDetection)
- Electronics: DAE3 Sn413; Calibrated: 25.04.2003
- Phantom: SAM 12; Type: SAM; Serial: 1043
- Measurement SW: DASY4V4.1 Build 47;Postprocessing SW: SEMCADV1.6 Build 115

**Tilt position - Middle/Area Scan (51x91x1):** Measurement grid:dx=15mmdy=15mm**Tilt position - Middle/ZoomScan (7x7x7) (7x7x7)/Cube 0:** Measurement grid: dx=5mmdy=5mmdz=5mm

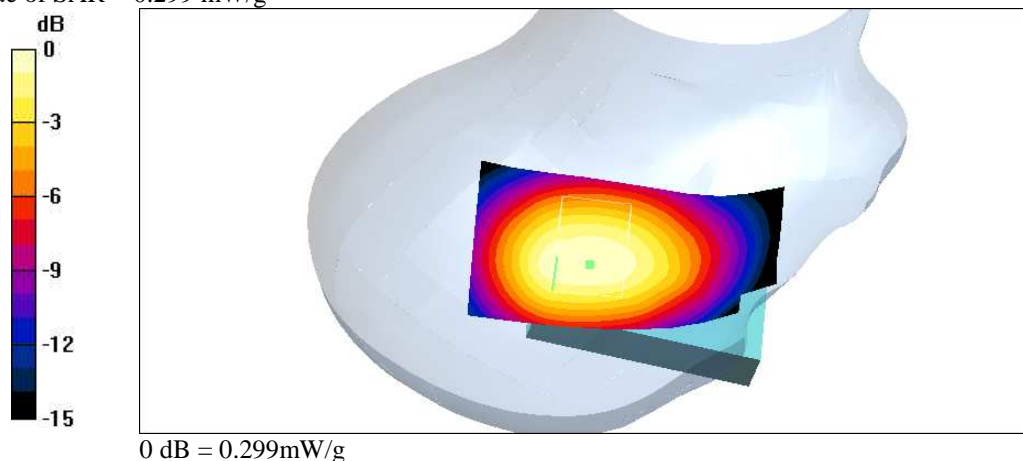
Peak SAR (extrapolated) = 0.37 W/kg

SAR(1 g) = 0.281 mW/g; SAR(10g) = 0.197 mW/g

Reference Value = 18.3 V/m

Power Drift = -0.06dB

Maximum value of SAR = 0.299 mW/g

**Additional information:**

conducted peak power :see chapter 2.6

ambient temperature: 24.5 °C; liquid temperature: 23.0°C

**P1528\_OET65-Body-GSM1900 Headset****DUT: Sagem; Type: MyX-2a; Serial:351816.95.000121-0****Program: Compliance Testing: P1528 and OET65 Protocol(Body position) with Headset**

Communication System: PCS 1900; Frequency: 1880 MHz;Duty Cycle:1:8

Medium: M1900 ( $\sigma = 1.5 \text{ mho/m}$   $\epsilon_r = 51.9$   $\rho = 1000 \text{ kg/m}^3$ )

Phantom section: Flat Section

DASY4 Configuration:

- Probe: ET3DV6 - SN1559; ConvF(4.84.84.8);Calibrated: 16.04.2003
- Sensor-Surface: 4mm (Mechanical SurfaceDetection)
- Electronics: DAE3 Sn413; Calibrated: 25.04.2003
- Phantom:SAM 12; Type: SAM; Serial: 1043
- Measurement SW: DASY4V4.1 Build 47;Postprocessing SW: SEMCADV1.6 Build 115

**Front position - Middle/Area Scan (101x91x1):** Measurement grid:dx=15mmdy=15mm**Front position - Middle/ZoomScan (7x7x7) (7x7x7)/Cube 1:** Measurement grid: dx=5mmdy=5mmdz=5mm

Peak SAR (extrapolated) = 0.0852 W/kg

SAR(1 g) = 0.0587 mW/g;SAR(10 g) = 0.0376 mW/g

Reference Value = 5.28 V/m

Power Drift = -0.04dB

Maximum value of SAR = 0.0626 mW/g

**Front position - Middle/ZoomScan (7x7x7) (7x7x7)/Cube 0:** Measurement grid: dx=5mmdy=5mmdz=5mm

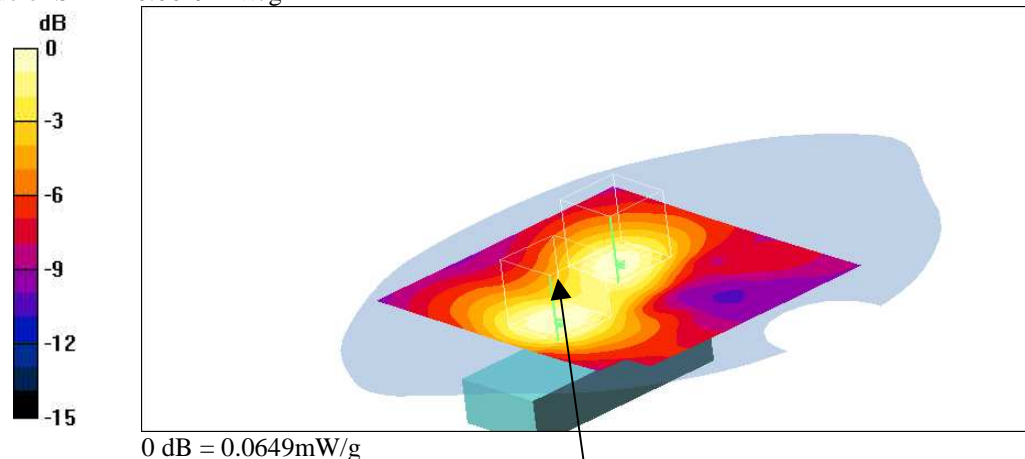
Peak SAR (extrapolated) = 0.0907 W/kg

SAR(1 g) = 0.0613 mW/g;SAR(10 g) = 0.0402 mW/g

Reference Value = 5.28 V/m

Power Drift = -0.04dB

Maximum value of SAR = 0.0649 mW/g

**Additional information:**

position or distance ofDUT to SAM : 15 mm distance

conducted peak power :see chapter 2.6

ambient temperature: 24.4 °C; liquid temperature: 23.0°C

## P1528\_OET65-Body-GSM1900 Headset

**DUT: Sagem; Type: MyX-2a; Serial:351816.95.000121-0**

**Program: Compliance Testing: P1528 and OET65 Protocol(Body position) with Headset**

Communication System: PCS 1900; Frequency: 1880 MHz;Duty Cycle:1:8

Medium: M1900 ( $\sigma = 1.5 \text{ mho/m}$   $\epsilon_r = 51.9$   $\rho = 1000 \text{ kg/m}^3$ )

Phantom section: Flat Section

DASY4 Configuration:

- Probe: ET3DV6 - SN1559; ConvF(4.84.84.8);Calibrated: 16.04.2003
- Sensor-Surface: 4mm (Mechanical SurfaceDetection)
- Electronics: DAE3 Sn413; Calibrated: 25.04.2003
- Phantom: SAM 12; Type: SAM; Serial: 1043
- Measurement SW: DASY4V4.1 Build 47;Postprocessing SW: SEMCADV1.6 Build 115

**Rear position - Middle/Area Scan (51x91x1):** Measurement grid:dx=15mmdy=15mm

**Rear position - Middle/ZoomScan (7x7x7) (7x7x7)/Cube 1:** Measurement grid: dx=5mmdy=5mmdz=5mm

Peak SAR (extrapolated) = 0.334 W/kg

SAR(1 g) = 0.225 mW/g; SAR(10g) = 0.142 mW/g

Reference Value = 9.9 V/m

Power Drift = -0.05dB

Maximum value of SAR = 0.242 mW/g

**Rear position - Middle/Zoom Scan (7x7x7)(7x7x7)/Cube 0:** Measurement grid: dx=5mmdy=5mmdz=5mm

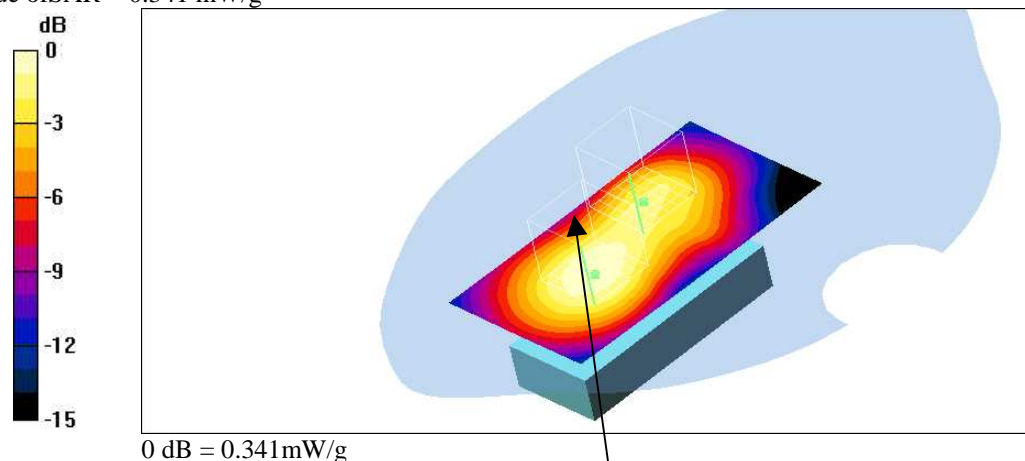
Peak SAR(extrapolated) = 0.442 W/kg

SAR(1 g) = 0.321 mW/g; SAR(10 g) = 0.21mW/g

Reference Value = 9.9 V/m

Power Drift = -0.05 dB

Maximum value of SAR = 0.341 mW/g



### Additional information:

position or distance of DUT to SAM : 15 mm distance

conducted peak power : 2.6

ambient temperature: 24.4 °C; liquid temperature: 21.8 °C

## P1528\_OET65-Body-GSM1900 Car Kit

**DUT: Sagem; Type: MyX-2a; Serial:351816.95.000121-0**

**Program: Compliance Testing: P1528 and OET65 Protocol(Body position) with Car Kit**

Communication System: PCS 1900; Frequency: 1880 MHz;Duty Cycle:1:8

Medium: M1900 ( $\sigma = 1.5 \text{ mho/m}$   $\epsilon_r = 51.9$   $\rho = 1000 \text{ kg/m}^3$ )

Phantom section: Flat Section

DASY4 Configuration:

- Probe: ET3DV6 - SN1559; ConvF(4.84.84.8);Calibrated: 16.04.2003
- Sensor-Surface: 4mm (Mechanical SurfaceDetection)
- Electronics: DAE3 Sn413; Calibrated: 25.04.2003
- Phantom: SAM 12; Type: SAM; Serial: 1043
- Measurement SW: DASY4V4.1 Build 47;Postprocessing SW: SEMCADV1.6 Build 115

**Rear position - Middle/Area Scan (51x91x1):** Measurement grid:dx=15mmdy=15mm

**Rear position - Middle/ZoomScan (7x7x7) (7x7x7)/Cube 1:** Measurement grid: dx=5mmdy=5mmdz=5mm

Peak SAR (extrapolated) = 0.272 W/kg

SAR(1 g) = 0.185 mW/g; SAR(10g) = 0.118 mW/g

Reference Value = 9.24 V/m

Power Drift = -0.03dB

Maximum value of SAR = 0.198 mW/g

**Rear position - Middle/ZoomScan (7x7x7) (7x7x7)/Cube 0:** Measurement grid: dx=5mmdy=5mmdz=5mm

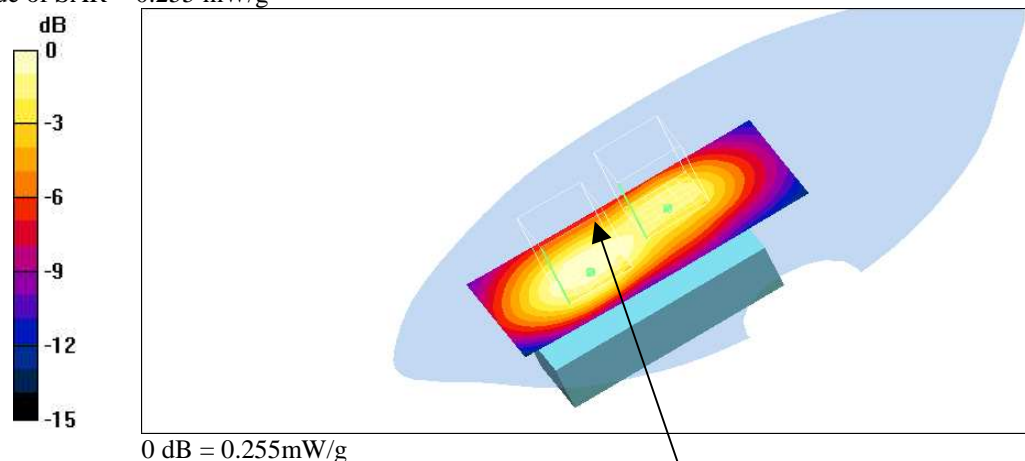
Peak SAR (extrapolated) = 0.338 W/kg

SAR(1 g) = 0.241 mW/g; SAR(10g) = 0.157 mW/g

Reference Value = 9.24 V/m

Power Drift = -0.03dB

Maximum value of SAR = 0.255 mW/g



### Additional information:

position or distance of DUT to SAM : distance 15 mm

conducted peak power : see chapter 2.6

ambient temperature: 24.6 °C; liquid temperature: 22.2 °C

2<sup>nd</sup> cube



## P1528\_OET65-Body-GSM1900 Car Kit

**DUT: Sagem; Type: MyX-2a; Serial:351816.95.000121-0**

**Program: Compliance Testing: P1528 and OET65 Protocol(Body position) with Car Kit**

Communication System: PCS 1900; Frequency: 1880 MHz;Duty Cycle:1:8

Medium: M1900 ( $\sigma = 1.5 \text{ mho/m}$   $\epsilon_r = 51.9$   $\rho = 1000 \text{ kg/m}^3$ )

Phantom section: Flat Section

DASY4 Configuration:

- Probe: ET3DV6 - SN1559; ConvF(4.84.84.8);Calibrated: 16.04.2003
- Sensor-Surface: 4mm (Mechanical SurfaceDetection)
- Electronics: DAE3 Sn413; Calibrated: 25.04.2003
- Phantom: SAM 12; Type: SAM; Serial: 1043
- Measurement SW: DASY4V4.1 Build 47;Postprocessing SW: SEMCADV1.6 Build 115

**Front position - Middle/Area Scan (101x91x1):** Measurement grid:dx=15mmdy=15mm

**Front position - Middle/ZoomScan (7x7x7) (7x7x7)/Cube 1:** Measurement grid: dx=5mmdy=5mmdz=5mm

Peak SAR (extrapolated) = 0.0742 W/kg

SAR(1 g) = 0.0507 mW/g;SAR(10 g) = 0.0317 mW/g

Reference Value = 4.7 V/m

Power Drift = -0.1dB

Maximum value of SAR = 0.0547 mW/g

**Front position - Middle/ZoomScan (7x7x7) (7x7x7)/Cube 0:** Measurement grid: dx=5mmdy=5mmdz=5mm

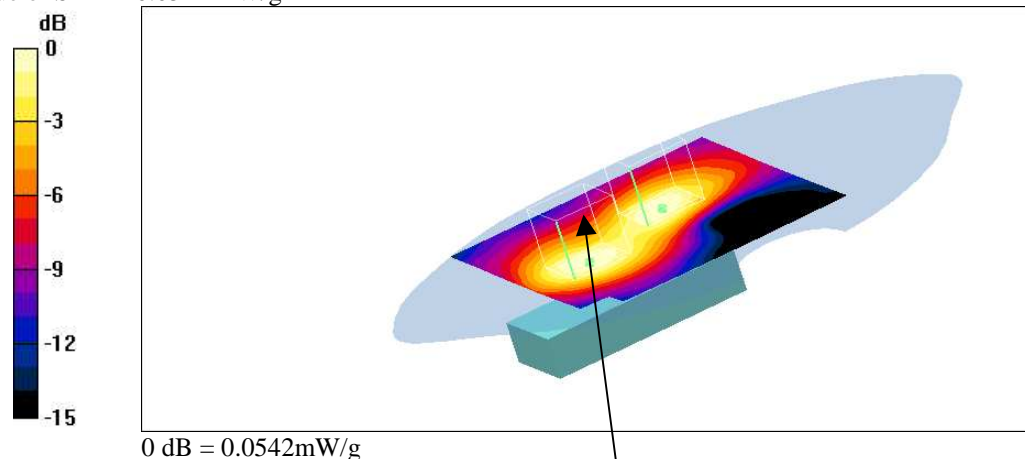
Peak SAR (extrapolated) = 0.0757 W/kg

SAR(1 g) = 0.0509 mW/g;SAR(10 g) = 0.0322 mW/g

Reference Value = 4.7 V/m

Power Drift = -0.1dB

Maximum value of SAR = 0.0542 mW/g



### Additional information:

position or distance of DUT to SAM : distance 15 mm

conducted peak power : see chapter 2.6

ambient temperature: 24.2 °C; liquid temperature: 22.4 °C

2<sup>nd</sup> cube



## P1528\_OET65-Body-GSM1900 Cigar Lighter Adapter

**DUT: Sagem; Type: MyX-2a; Serial:351816.95.000121-0**

**Program: Compliance Testing: P1528 and OET65 Protocol(Body position) with Cigar Lighter Adapter**

Communication System: PCS 1900; Frequency: 1880 MHz;Duty Cycle:1:8

Medium: M1900 ( $\sigma = 1.5 \text{ mho/m}$   $\epsilon_r = 51.9$   $\rho = 1000 \text{ kg/m}^3$ )

Phantom section: Flat Section

DASY4 Configuration:

- Probe: ET3DV6 - SN1559; ConvF(4.84.84.8);Calibrated: 16.04.2003
- Sensor-Surface: 4mm (Mechanical SurfaceDetection)
- Electronics: DAE3 Sn413; Calibrated: 25.04.2003
- Phantom: SAM 12; Type: SAM; Serial: 1043
- Measurement SW: DASY4V4.1 Build 47;Postprocessing SW: SEMCADV1.6 Build 115

**Rear position - Middle/Area Scan (51x91x1):** Measurement grid:dx=15mmdy=15mm

**Rear position - Middle/ZoomScan (7x7x7) (7x7x7)/Cube 1:** Measurement grid: dx=5mmdy=5mmdz=5mm

Peak SAR (extrapolated) = 0.373 W/kg

SAR(1 g) = 0.25 mW/g; SAR(10g) = 0.157 mW/g

Reference Value = 10.1 V/m

Power Drift = -0.04dB

Maximum value of SAR = 0.269 mW/g

**Rear position - Middle/ZoomScan (7x7x7) (7x7x7)/Cube 0:** Measurement grid: dx=5mmdy=5mmdz=5mm

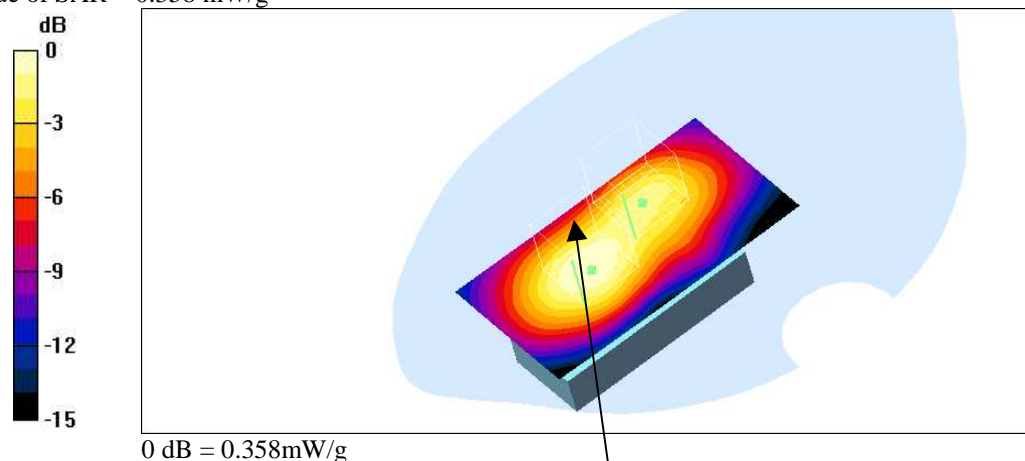
Peak SAR (extrapolated) = 0.479 W/kg

SAR(1 g) = 0.338 mW/g; SAR(10g) = 0.218 mW/g

Reference Value = 10.1 V/m

Power Drift = -0.04dB

Maximum value of SAR = 0.358 mW/g



### Additional information:

position or distance of DUT to SAM : distance 15 mm

conducted peak power : see chapter 2.6

ambient temperature: 24.2 °C; liquid temperature: 22.0 °C

2<sup>nd</sup> cube

## P1528\_OET65-Body-GSM1900 Cigar Lighter Adapter

**DUT: Sagem; Type: MyX-2a; Serial:351816.95.000121-0**

**Program: Compliance Testing: P1528 and OET65 Protocol(Body position) with Cigar Lighter Adapter**

Communication System: PCS 1900; Frequency: 1880 MHz;Duty Cycle:1:8

Medium: M1900 ( $\sigma = 1.5 \text{ mho/m}$   $\epsilon_r = 51.9$   $\rho = 1000 \text{ kg/m}^3$ )

Phantom section: Flat Section

DASY4 Configuration:

- Probe: ET3DV6 - SN1559; ConvF(4.84.84.8);Calibrated: 16.04.2003
- Sensor-Surface: 4mm (Mechanical SurfaceDetection)
- Electronics: DAE3 Sn413; Calibrated: 25.04.2003
- Phantom: SAM 12; Type: SAM; Serial: 1043
- Measurement SW: DASY4V4.1 Build 47;Postprocessing SW: SEMCADV1.6 Build 115

**Front position - Middle/Area Scan (101x91x1):** Measurement grid:dx=15mmdy=15mm

**Front position - Middle/ZoomScan (7x7x7) (7x7x7)/Cube 1:** Measurement grid: dx=5mmdy=5mmdz=5mm

Peak SAR (extrapolated) = 0.0791 W/kg

SAR(1 g) = 0.0518 mW/g;SAR(10 g) = 0.0334 mW/g

Reference Value = 5.3 V/m

Power Drift = -0.1dB

Maximum value of SAR = 0.0549 mW/g

**Front position - Middle/ZoomScan (7x7x7) (7x7x7)/Cube 0:** Measurement grid: dx=5mmdy=5mmdz=5mm

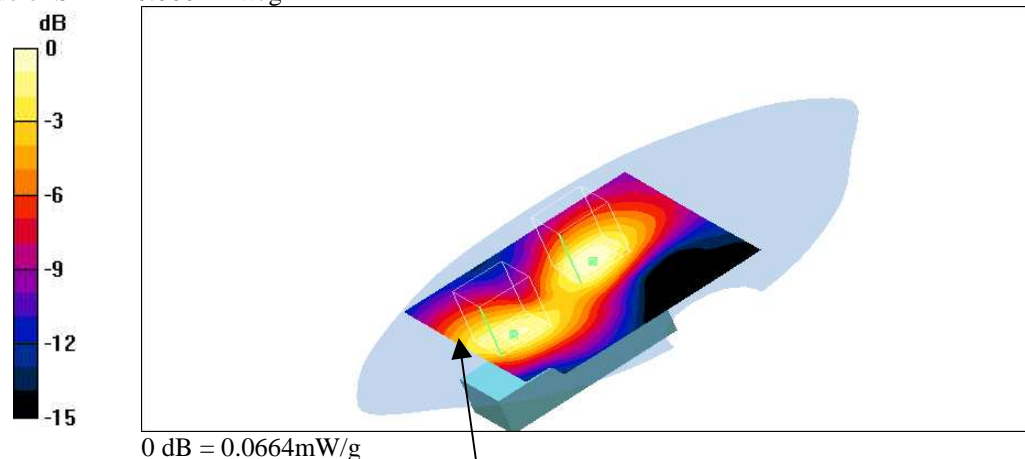
Peak SAR (extrapolated) = 0.0906 W/kg

SAR(1 g) = 0.0612 mW/g;SAR(10 g) = 0.0381 mW/g

Reference Value = 5.3 V/m

Power Drift = -0.1dB

Maximum value of SAR = 0.0664 mW/g



### Additional information:

position or distance of DUT to SAM : distance 15 mm

conducted peak power : see chapter 2.6

ambient temperature: 24.2 °C; liquid temperature: 22.8 °C

2<sup>nd</sup> cube

## P1528\_OET65-Body-GSM1900 Data Cable

**DUT: Sagem; Type: MyX-2a; Serial:351816.95.000121-0**

**Program: Compliance Testing: P1528 and OET65 Protocol(Body position) with Data Cable**

Communication System: PCS 1900; Frequency: 1880 MHz; Duty Cycle:1:8

Medium: M1900 ( $\sigma = 1.5 \text{ mho/m}$   $\epsilon_r = 51.9$   $\rho = 1000 \text{ kg/m}^3$ )

Phantom section: Flat Section

DASY4 Configuration:

- Probe: ET3DV6 - SN1559; ConvF(4.84.84.8); Calibrated: 16.04.2003
- Sensor-Surface: 4mm (Mechanical SurfaceDetection)
- Electronics: DAE3 Sn413; Calibrated: 25.04.2003
- Phantom: SAM 12; Type: SAM; Serial: 1043
- Measurement SW: DASY4V4.1 Build 47; Postprocessing SW: SEMCADV1.6 Build 115

**Rear position - Middle/Area Scan (51x91x1):** Measurement grid:  $dx=15\text{mm}$   $dy=15\text{mm}$

**Rear position - Middle/ZoomScan (7x7x7) (7x7x7)/Cube 1:** Measurement grid:  $dx=5\text{mm}$   $dy=5\text{mm}$   $dz=5\text{mm}$

Peak SAR (extrapolated) = 0.353 W/kg

SAR(1 g) = 0.248 mW/g; SAR(10g) = 0.163 mW/g

Reference Value = 11.1 V/m

Power Drift = -0.06dB

Maximum value of SAR = 0.268 mW/g

**Rear position - Middle/ZoomScan (7x7x7) (7x7x7)/Cube 0:** Measurement grid:  $dx=5\text{mm}$   $dy=5\text{mm}$   $dz=5\text{mm}$

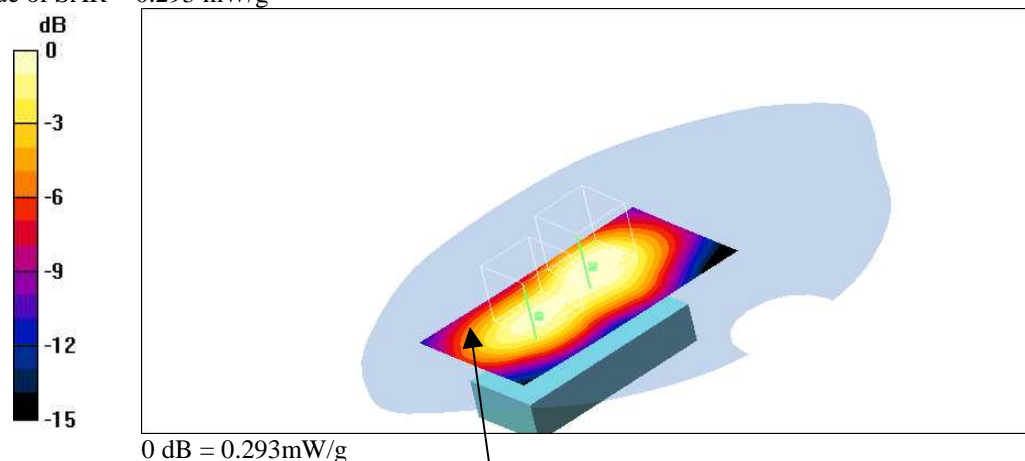
Peak SAR (extrapolated) = 0.409 W/kg

SAR(1 g) = 0.275 mW/g; SAR(10g) = 0.175 mW/g

Reference Value = 11.1 V/m

Power Drift = -0.06dB

Maximum value of SAR = 0.293 mW/g



### Additional information:

position or distance of DUT to SAM : 15 mm distance

conducted peak power : see chapter 2.6

ambient temperature: 24.4°C; liquid temperature: 22.0°C

2<sup>nd</sup> cube

## P1528\_OET65-Body-GSM1900 Data Cable

**DUT: Sagem; Type: MyX-2a; Serial:351816.95.000121-0**

**Program: Compliance Testing: P1528 and OET65 Protocol(Body position) with Data Cable**

Communication System: PCS 1900; Frequency: 1880 MHz; Duty Cycle:1:8

Medium: M1900 ( $\sigma = 1.5 \text{ mho/m}$   $\epsilon_r = 51.9$   $\rho = 1000 \text{ kg/m}^3$ )

Phantom section: Flat Section

DASY4 Configuration:

- Probe: ET3DV6 - SN1559; ConvF(4.84.84.8); Calibrated: 16.04.2003
- Sensor-Surface: 4mm (Mechanical SurfaceDetection)
- Electronics: DAE3 Sn413; Calibrated: 25.04.2003
- Phantom: SAM 12; Type: SAM; Serial: 1043
- Measurement SW: DASY4V4.1 Build 47; Postprocessing SW: SEMCADV1.6 Build 115

**Front position - Middle/Area Scan (101x91x1):** Measurement grid:  $dx=15 \text{ mm}$   $dy=15 \text{ mm}$

**Front position - Middle/ZoomScan (7x7x7) (7x7x7)/Cube 1:** Measurement grid:  $dx=5 \text{ mm}$   $dy=5 \text{ mm}$   $dz=5 \text{ mm}$

Peak SAR (extrapolated) =  $0.0699 \text{ W/kg}$

SAR(1 g) =  $0.0477 \text{ mW/g}$ ; SAR(10 g) =  $0.0308 \text{ mW/g}$

Reference Value =  $5.55 \text{ V/m}$

Power Drift =  $-0.04 \text{ dB}$

Maximum value of SAR =  $0.0508 \text{ mW/g}$

**Front position - Middle/ZoomScan (7x7x7) (7x7x7)/Cube 0:** Measurement grid:  $dx=5 \text{ mm}$   $dy=5 \text{ mm}$   $dz=5 \text{ mm}$

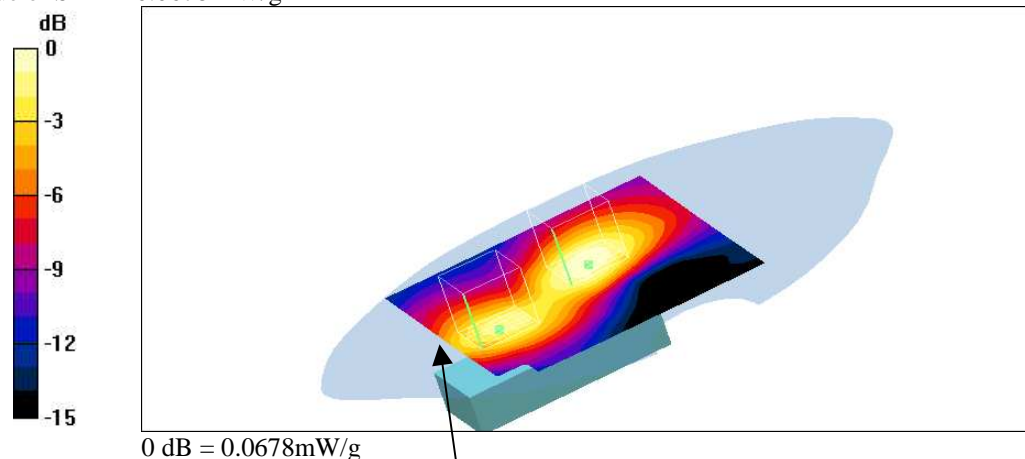
Peak SAR (extrapolated) =  $0.095 \text{ W/kg}$

SAR(1 g) =  $0.0633 \text{ mW/g}$ ; SAR(10g) =  $0.0405 \text{ mW/g}$

Reference Value =  $5.55 \text{ V/m}$

Power Drift =  $-0.04 \text{ dB}$

Maximum value of SAR =  $0.0678 \text{ mW/g}$



### Additional information:

position or distance of DUT to SAM : 15 mm distance

conducted peak power : see chapter 2.6

ambient temperature:  $24.2^\circ \text{C}$ ; liquid temperature:  $23.0^\circ \text{C}$

2<sup>nd</sup> cube

Date/Time: 07/30/03 14:09:52

## P1528\_OET65-Body-GSM850 Headset

**DUT: Sagem; Type: MyX-2a; Serial:351816.95.000121-0**

**Program: Compliance Testing: P1528 and OET65 Protocol(Body position) with headset**

Communication System: PCS 850; Frequency: 836.6 MHz; Duty Cycle: 1:8

Medium: M850 ( $\sigma = 0.95 \text{ mho/m}$   $\epsilon_r = 57.4$   $\rho = 1000 \text{ kg/m}^3$ )

Phantom section: Flat Section

DASY4 Configuration:

- Probe: ET3DV6 - SN1559; ConvF(6.56.56.5); Calibrated: 16.04.2003
- Sensor-Surface: 4mm (Mechanical SurfaceDetection)
- Electronics: DAE3 Sn413; Calibrated: 25.04.2003
- Phantom: SAM 12; Type: SAM; Serial: 1043
- Measurement SW: DASY4V4.1 Build 47; Postprocessing SW: SEMCADV1.6 Build 115

**Rear position - Middle/Area Scan (51x91x1):** Measurement grid: dx=15mmdy=15mm

**Rear position - Middle/Zoom Scan (7x7x7)/Cube 0:** Measurement grid: dx=5mmdy=5mmdz=5mm

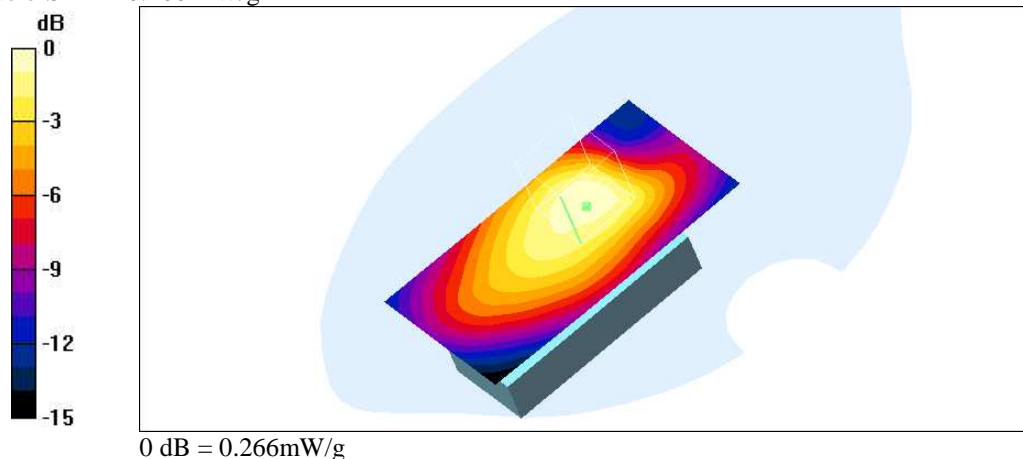
Peak SAR(extrapolated) = 0.363 W/kg

SAR(1 g) = 0.248 mW/g; SAR(10 g) = 0.167mW/g

Reference Value = 12.9 V/m

Power Drift = 0.04 dB

Maximum value of SAR = 0.266 mW/g



### Additional information:

position or distance of DUT to SAM : distance 15 mm

conducted peak power : see chapter 2.6

ambient temperature: 24.1 °C; liquid temperature: 23.2°C

## P1528\_OET65-Body-GSM850 Headset

**DUT: Sagem; Type: MyX-2a; Serial:351816.95.000121-0**

**Program: Compliance Testing: P1528 and OET65 Protocol(Body position) with headset**

Communication System: PCS 850; Frequency: 836.6 MHz;Duty Cycle:1:8

Medium: M850 ( $\sigma = 0.95 \text{ mho/m}$   $\epsilon_r = 57.4$   $\rho = 1000 \text{ kg/m}^3$ )

Phantom section: Flat Section

DASY4 Configuration:

- Probe: ET3DV6 - SN1559; ConvF(6.56.56.5);Calibrated: 16.04.2003
- Sensor-Surface: 4mm (Mechanical SurfaceDetection)
- Electronics: DAE3 Sn413; Calibrated: 25.04.2003
- Phantom:SAM 12; Type: SAM; Serial: 1043
- Measurement SW: DASY4V4.1 Build 47;Postprocessing SW: SEMCADV1.6 Build 115

**Front position - Middle/Area Scan (101x91x1):** Measurement grid:dx=15mmdy=15mm

**Front position - Middle/ZoomScan (7x7x7) (7x7x7)/Cube 0:** Measurement grid: dx=5mmdy=5mmdz=5mm

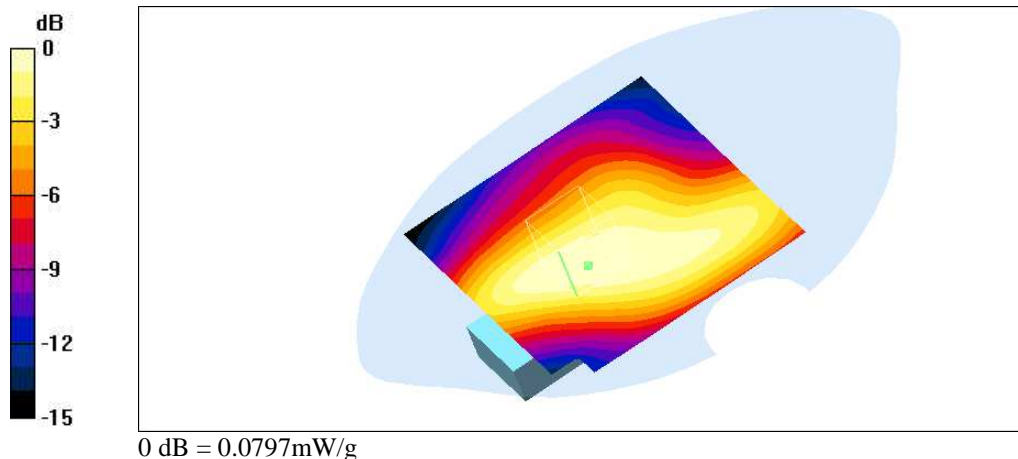
Peak SAR (extrapolated) = 0.0937 W/kg

SAR(1 g) = 0.0755 mW/g;SAR(10 g) = 0.0565 mW/g

Reference Value = 7.37 V/m

Power Drift = -0.02dB

Maximum value of SAR = 0.0797 mW/g



### Additional information:

position or distance of DUT to SAM : distance 15 mm

conducted peak power : see chapter 2.6

ambient temperature: 24.1 °C; liquid temperature: 23.2°C

## P1528\_OET65-Body-GSM850 Car Kit

**DUT: Sagem; Type: MyX-2a; Serial:351816.95.000121-0**

**Program: Compliance Testing: P1528 and OET65 Protocol(Body position) with car kit**

Communication System: PCS 850; Frequency: 836.6 MHz;Duty Cycle:1:8

Medium: M850 ( $\sigma = 0.95 \text{ mho/m}$   $\epsilon_r = 57.4$   $\rho = 1000 \text{ kg/m}^3$ )

Phantom section: Flat Section

DASY4 Configuration:

- Probe: ET3DV6 - SN1559; ConvF(6.56.56.5);Calibrated: 16.04.2003
- Sensor-Surface: 4mm (Mechanical SurfaceDetection)
- Electronics: DAE3 Sn413; Calibrated: 25.04.2003
- Phantom:SAM 12; Type: SAM; Serial: 1043
- Measurement SW: DASY4V4.1 Build 47;Postprocessing SW: SEMCADV1.6 Build 115

**Rear position - Middle/Area Scan (51x91x1):** Measurement grid:dx=15mmdy=15mm

**Rear position - Middle/ZoomScan (7x7x7) (7x7x7)/Cube 0:** Measurement grid: dx=5mmdy=5mmdz=5mm

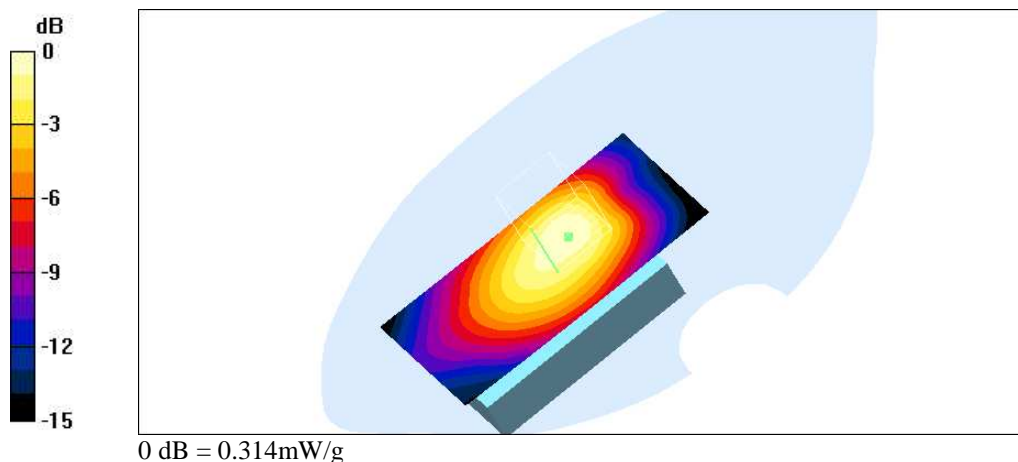
Peak SAR (extrapolated) = 0.416 W/kg

SAR(1 g) = 0.293 mW/g; SAR(10g) = 0.201 mW/g

Reference Value = 11.8 V/m

Power Drift = -0.03dB

Maximum value of SAR = 0.314 mW/g



### Additional information:

position or distanceof DUT to SAM : distance 15 mm

conducted peak power : see chapter2.6

ambient temperature: 24.0 °C; liquid temperature: 23.0°C



## P1528\_OET65-Body-GSM850 Car Kit

**DUT: Sagem; Type: MyX-2a; Serial:351816.95.000121-0**

**Program: Compliance Testing: P1528 and OET65 Protocol(Body position) with car kit**

Communication System: PCS 850; Frequency: 836.6 MHz;Duty Cycle:1:8

Medium: M850 ( $\sigma = 0.95 \text{ mho/m}$   $\epsilon_r = 57.4$   $\rho = 1000 \text{ kg/m}^3$ )

Phantom section: Flat Section

DASY4 Configuration:

- Probe: ET3DV6 - SN1559; ConvF(6.56.56.5);Calibrated: 16.04.2003
- Sensor-Surface: 4mm (Mechanical SurfaceDetection)
- Electronics: DAE3 Sn413; Calibrated: 25.04.2003
- Phantom:SAM 12; Type: SAM; Serial: 1043
- Measurement SW: DASY4V4.1 Build 47;Postprocessing SW: SEMCADV1.6 Build 115

**Front position - Middle/Area Scan (101x91x1):** Measurement grid:dx=15mmdy=15mm

**Front position - Middle/ZoomScan (7x7x7) (7x7x7)/Cube 0:** Measurement grid: dx=5mmdy=5mmdz=5mm

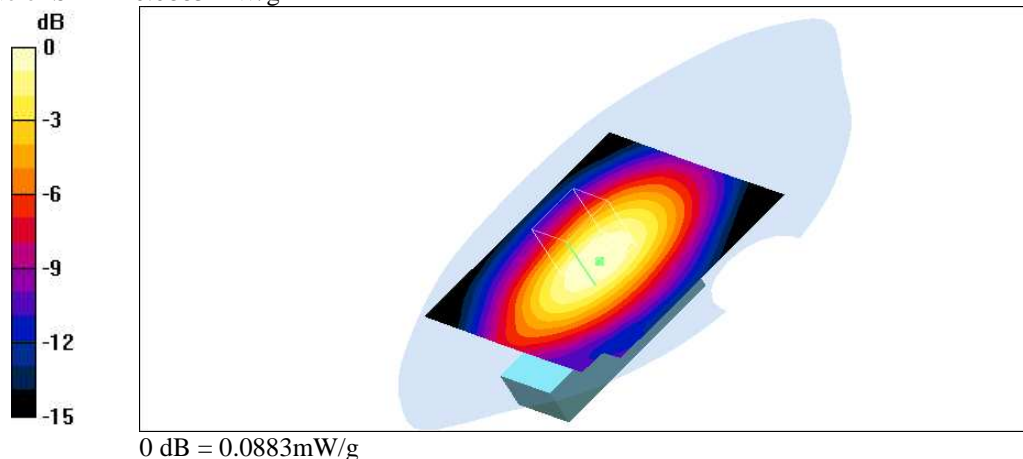
Peak SAR (extrapolated) = 0.107 W/kg

SAR(1 g) = 0.0843 mW/g; SAR(10g) = 0.0615 mW/g

Reference Value = 8.33 V/m

Power Drift = -0.02dB

Maximum value of SAR = 0.0883 mW/g



### Additional information:

position or distance of DUT to SAM : distance 15 mm

conducted peak power : see chapter 2.6

ambient temperature: 24.1°C; liquid temperature: 23.0°C



## P1528\_OET65-Body-GSM850 Cigar Lighter Adapter

**DUT: Sagem; Type: MyX-2a; Serial:351816.95.000121-0**

**Program: Compliance Testing: P1528 and OET65 Protocol(Body position) with cigar lighter adapter**

Communication System: PCS 850; Frequency: 836.6 MHz;Duty Cycle:1:8

Medium: M850 ( $\sigma = 0.95$  mho/m  $\epsilon_r = 57.4$   $\rho = 1000$ kg/m<sup>3</sup>)

Phantom section: Flat Section

DASY4 Configuration:

- Probe: ET3DV6 - SN1559; ConvF(6.56.56.5);Calibrated: 16.04.2003
- Sensor-Surface: 4mm (Mechanical SurfaceDetection)
- Electronics: DAE3 Sn413; Calibrated: 25.04.2003
- Phantom:SAM 12; Type: SAM; Serial: 1043
- Measurement SW: DASY4V4.1 Build 47;Postprocessing SW: SEMCADV1.6 Build 115

**Rear position - Middle/Area Scan (51x91x1):** Measurement grid:dx=15mmdy=15mm

**Rear position - Middle/ZoomScan (7x7x7) (7x7x7)/Cube 0:** Measurement grid: dx=5mmdy=5mmdz=5mm

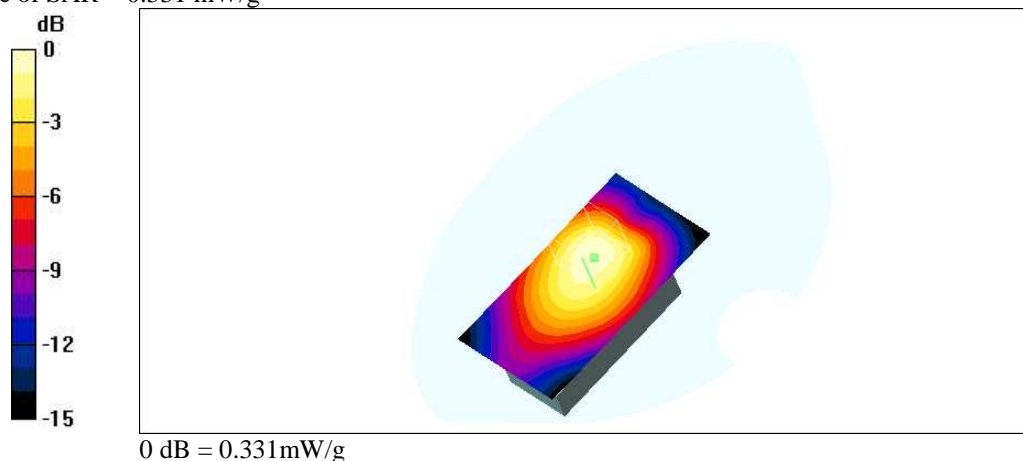
Peak SAR (extrapolated) = 0.437 W/kg

SAR(1 g) = 0.31 mW/g; SAR(10g) = 0.211 mW/g

Reference Value = 13 V/m

Power Drift = -0.04 dB

Maximumvalue of SAR = 0.331 mW/g



### Additional information:

position or distanceof DUT to SAM : distance 15 mm

conducted peak power : see chapter2.6

ambient temperature: 24.1 °C; liquid temperature: 23.2°C

**P1528\_OET65-Body-GSM850 Cigar Lighter Adapter****DUT: Sagem; Type: MyX-2a; Serial:351816.95.000121-0****Program: Compliance Testing: P1528 and OET65 Protocol(Body position) with cigar lighter adapter**

Communication System: PCS 850; Frequency: 836.6 MHz; Duty Cycle: 1:8

Medium: M850 ( $\sigma = 0.95 \text{ mho/m}$   $\epsilon_r = 57.4$   $\rho = 1000 \text{ kg/m}^3$ )

Phantom section: Flat Section

DASY4 Configuration:

- Probe: ET3DV6 - SN1559; ConvF(6.56.56.5); Calibrated: 16.04.2003
- Sensor-Surface: 4mm (Mechanical SurfaceDetection)
- Electronics: DAE3 Sn413; Calibrated: 25.04.2003
- Phantom: SAM 12; Type: SAM; Serial: 1043
- Measurement SW: DASY4V4.1 Build 47; Postprocessing SW: SEMCADV1.6 Build 115

**Front position - Middle/Area Scan (101x91x1):** Measurement grid:  $dx=15\text{mm}$   $dy=15\text{mm}$ **Front position - Middle/ZoomScan (7x7x7) (7x7x7)/Cube 0:** Measurement grid:  $dx=5\text{mm}$   $dy=5\text{mm}$   $dz=5\text{mm}$ 

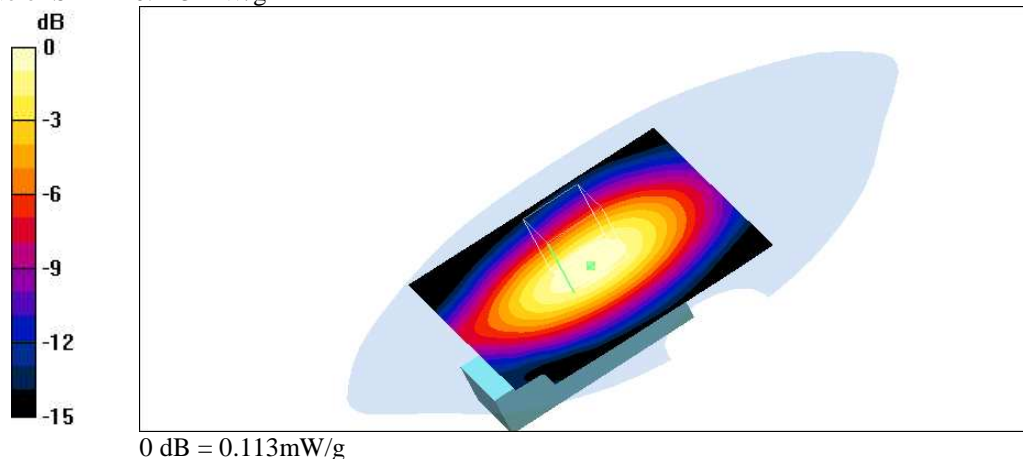
Peak SAR (extrapolated) = 0.133 W/kg

SAR(1 g) = 0.107 mW/g; SAR(10g) = 0.0781 mW/g

Reference Value = 9.72 V/m

Power Drift = -0.001dB

Maximum value of SAR = 0.113 mW/g

**Additional information:**

position or distance of DUT to SAM :

conducted peak power : see chapter 2.6

ambient temperature: 23.9 °C; liquid temperature: 23.0 °C

## P1528\_OET65-Body-GSM850 Data cable

**DUT: Sagem; Type: MyX-2a; Serial:351816.95.000121-0**

**Program: Compliance Testing: P1528 and OET65 Protocol(Body position) with data cable**

Communication System: PCS 850; Frequency: 836.6 MHz;Duty Cycle:1:8

Medium: M850 ( $\sigma = 0.95 \text{ mho/m}$   $\epsilon_r = 57.4$   $\rho = 1000 \text{ kg/m}^3$ )

Phantom section: Flat Section

DASY4 Configuration:

- Probe: ET3DV6 - SN1559; ConvF(6.56.56.5);Calibrated: 16.04.2003
- Sensor-Surface: 4mm (Mechanical SurfaceDetection)
- Electronics: DAE3 Sn413; Calibrated: 25.04.2003
- Phantom:SAM 12; Type: SAM; Serial: 1043
- Measurement SW: DASY4V4.1 Build 47;Postprocessing SW: SEMCADV1.6 Build 115

**Rear position - Middle/Area Scan (51x91x1):** Measurement grid:dx=15mmdy=15mm

**Rear position - Middle/ZoomScan (7x7x7) (7x7x7)/Cube 0:** Measurement grid: dx=5mmdy=5mmdz=5mm

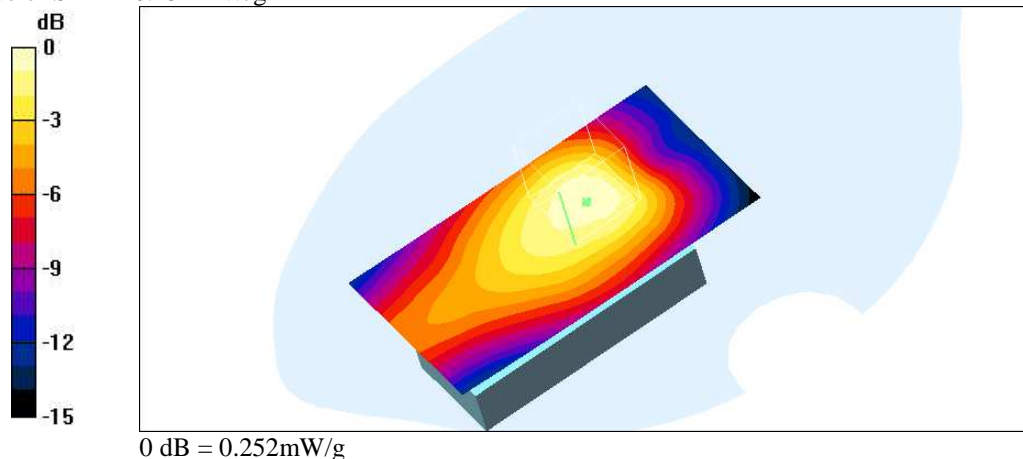
Peak SAR (extrapolated) = 0.34 W/kg

SAR(1 g) = 0.236 mW/g; SAR(10g) = 0.157 mW/g

Reference Value = 11.5 V/m

Power Drift = -0.04dB

Maximum value of SAR = 0.252 mW/g



### Additional information:

position or distance of DUT to SAM : distance 15 mm

conducted peak power : see chapter 2.6

ambient temperature: 24.0 °C; liquid temperature: 23.0 °C

## P1528\_OET65-Body-GSM850 Data cable

**DUT: Sagem; Type: MyX-2a; Serial:351816.95.000121-0**

**Program: Compliance Testing: P1528 and OET65 Protocol(Body position) with data cable**

Communication System: PCS 850; Frequency: 836.6 MHz;Duty Cycle:1:8

Medium: M850 ( $\sigma = 0.95 \text{ mho/m}$   $\epsilon_r = 57.4$   $\rho = 1000 \text{ kg/m}^3$ )

Phantom section: Flat Section

DASY4 Configuration:

- Probe: ET3DV6 - SN1559; ConvF(6.56.56.5);Calibrated: 16.04.2003
- Sensor-Surface: 4mm (Mechanical SurfaceDetection)
- Electronics: DAE3 Sn413; Calibrated: 25.04.2003
- Phantom: SAM 12; Type: SAM; Serial: 1043
- Measurement SW: DASY4V4.1 Build 47;Postprocessing SW: SEMCADV1.6 Build 115

**Front position - Middle/Area Scan (101x91x1):** Measurement grid:dx=15mmdy=15mm

**Front position - Middle/ZoomScan (7x7x7) (7x7x7)/Cube 0:** Measurement grid: dx=5mmdy=5mmdz=5mm

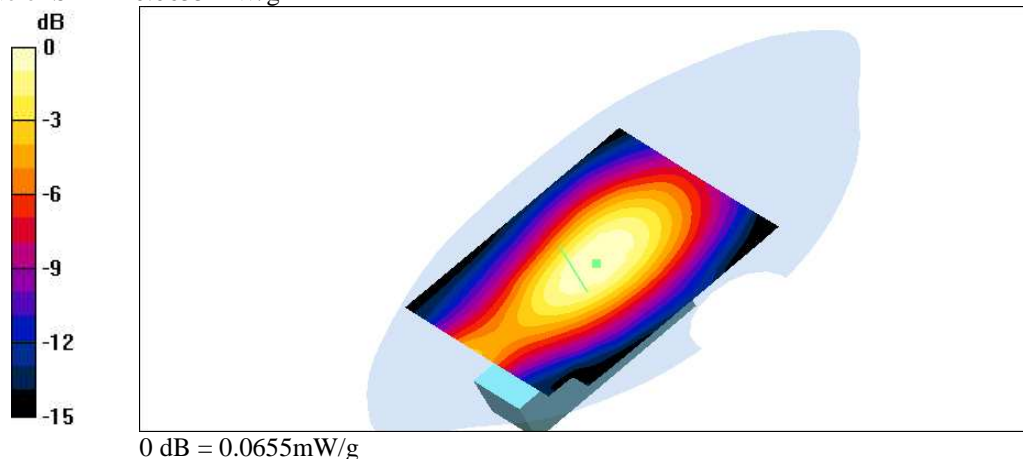
Peak SAR (extrapolated) = 0.0795 W/kg

SAR(1 g) = 0.0623 mW/g;SAR(10 g) = 0.0454 mW/g

Reference Value = 7.87 V/m

Power Drift = -0.03dB

Maximum value of SAR = 0.0655 mW/g



### Additional information:

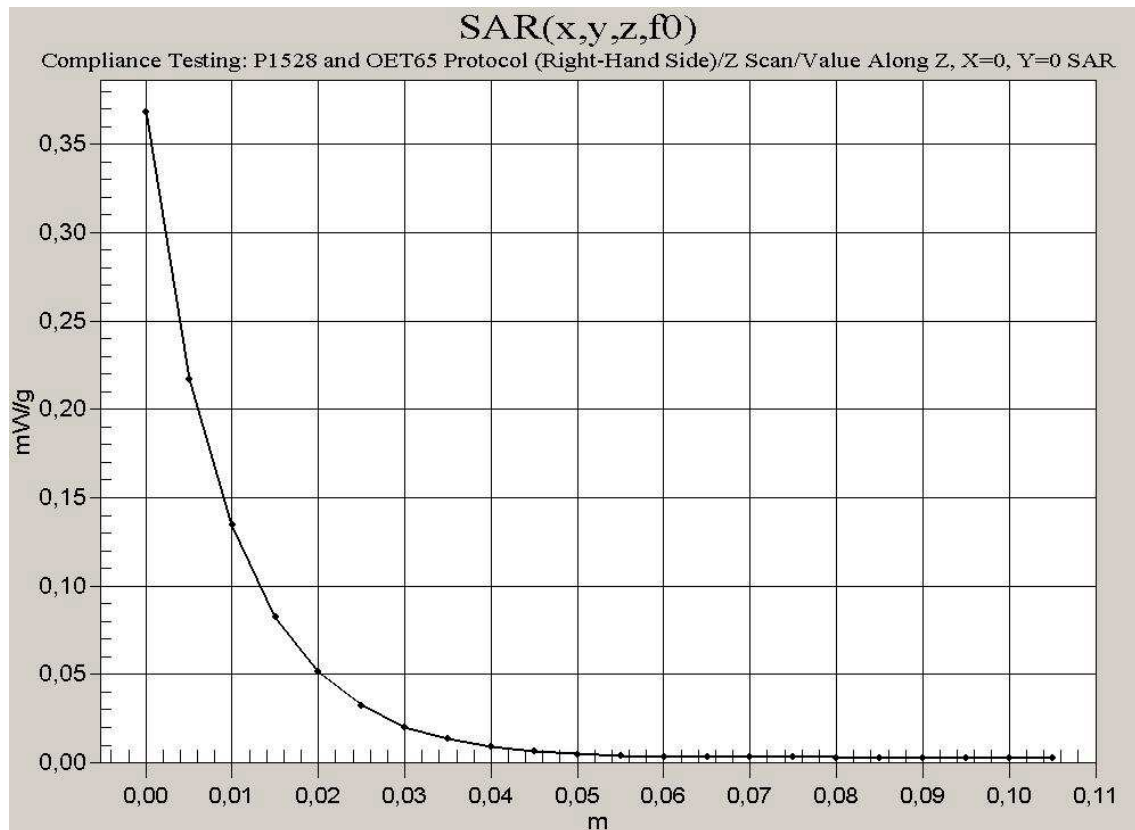
position or distance of DUT to SAM : distance 15 mm

conducted peak power : see chapter 2.6

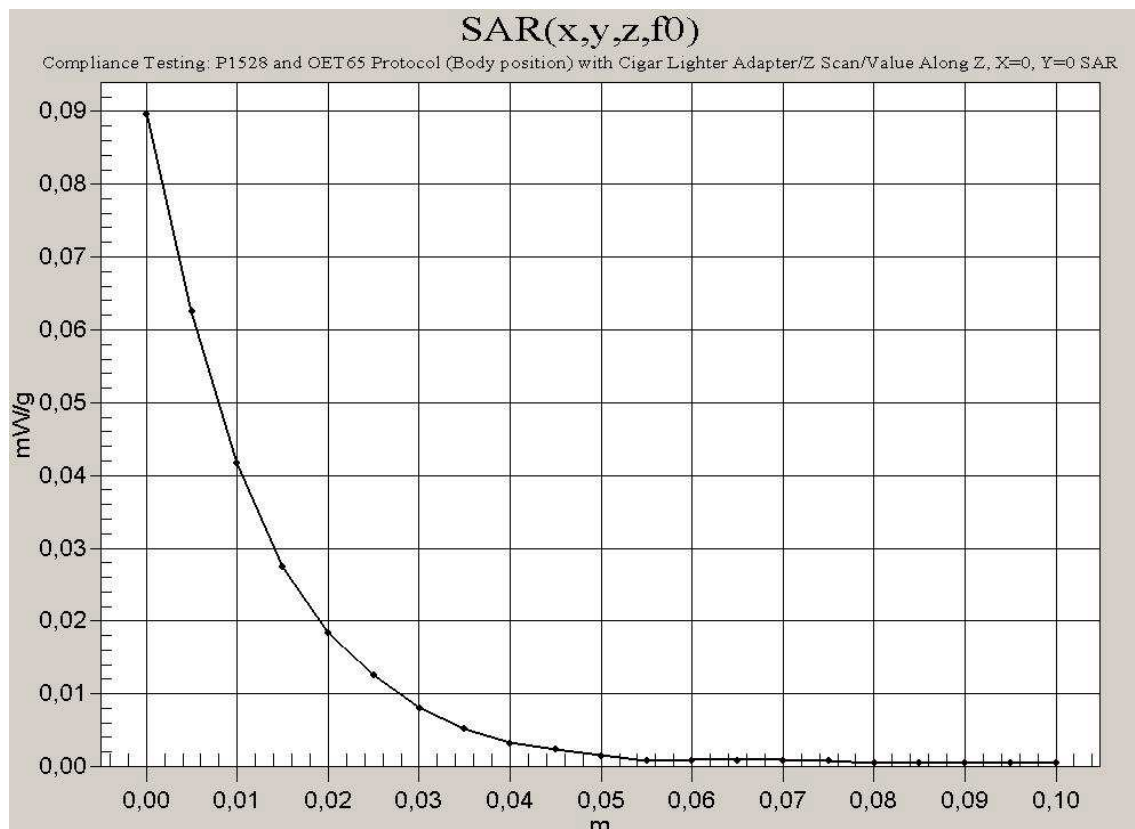
ambient temperature: 24.0 °C; liquid temperature: 23.2 °C

Test report no.: 4-0902-11-01/03

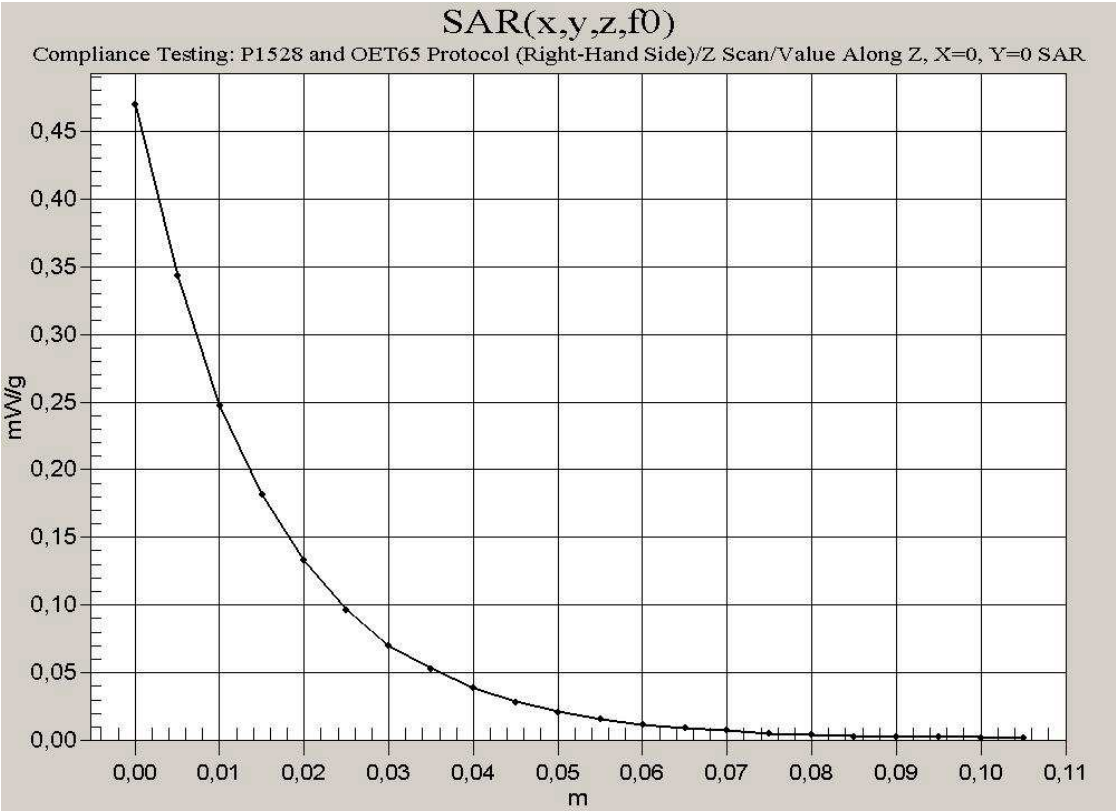
Z. Axis scan Head 1900 MHz



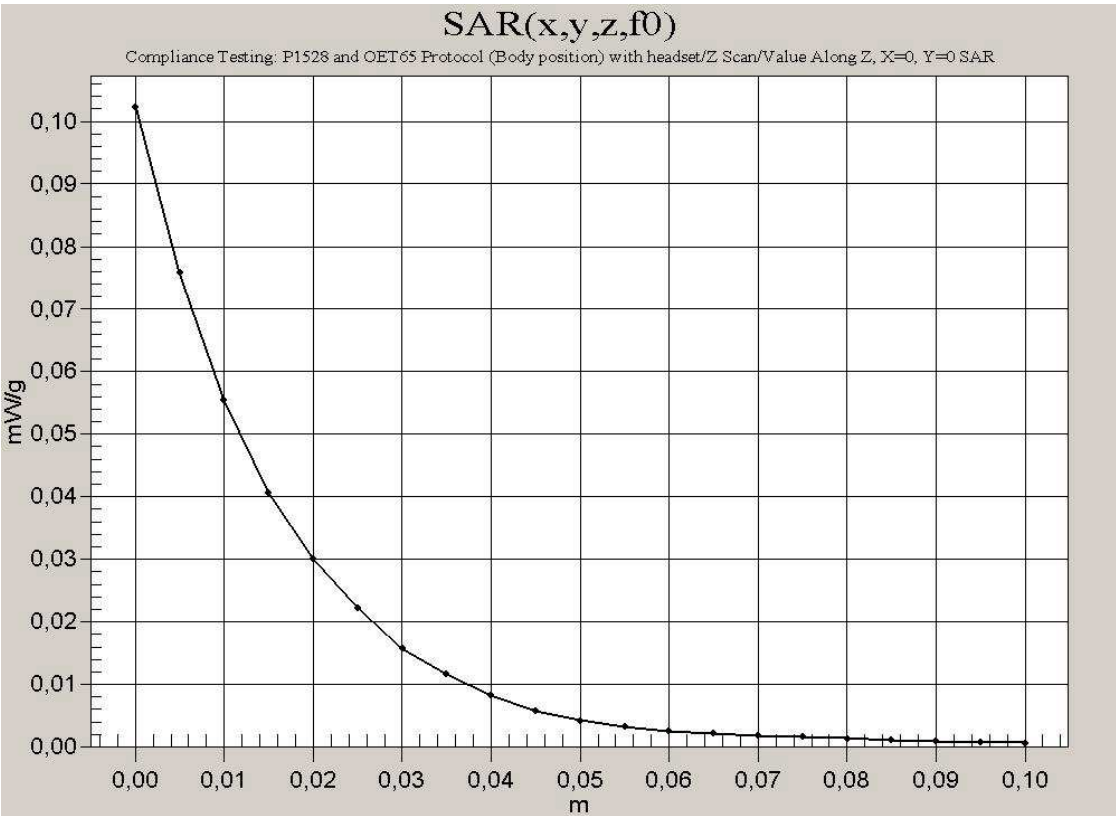
Z-Axis scan Body 1900 MHz



Z-axis scan head 850 MHz



Z-axis scan body 850 MHz



## Annex 3 Photo documentation

### Picture no. 1

Measurement System DASY 4





**Picture no. 2**

DUT - front view





**Picture no. 3**

DUT - side view



### Picture no. 4

DUT - connector for accessories



**Picture no. 5**

DUT - rear view



**Picture no. 6**

DUT - rear view (open)



**Picture no. 7**

DUT - rear view (open, with battery removed)





**Picture no. 8**

battery



**Picture no. 9**

DUT - with data cable



**Picture no. 10**

DUT - with car kit





**Picture no. 11**

DUT - with headset



**Picture no. 12**

DUT - with cigar lighter adaptor



**Picture no. 13**

test position left hand side touched



**Picture no. 14**

test position left hand side touched



**Picture no. 15**

test position left hand side tilted 15°



**Picture no. 16**

test position left hand side tilted 15°



**Picture no. 17**

test position right hand side touched





**Picture no. 18**

test position right hand side touched





**Picture no. 19**

test position right hand side tilted 15°



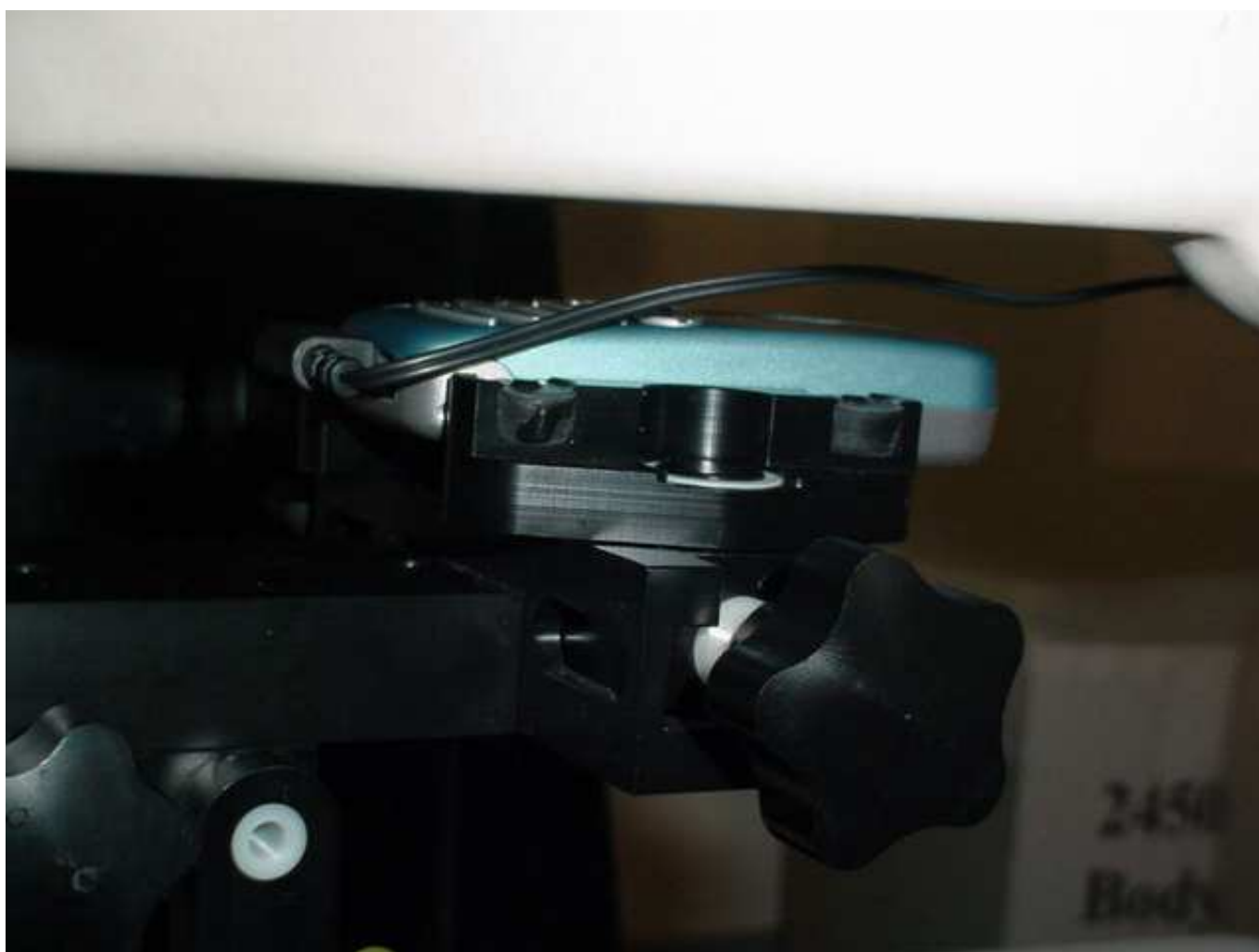
**Picture no. 20**

test position right hand side tilted 15°



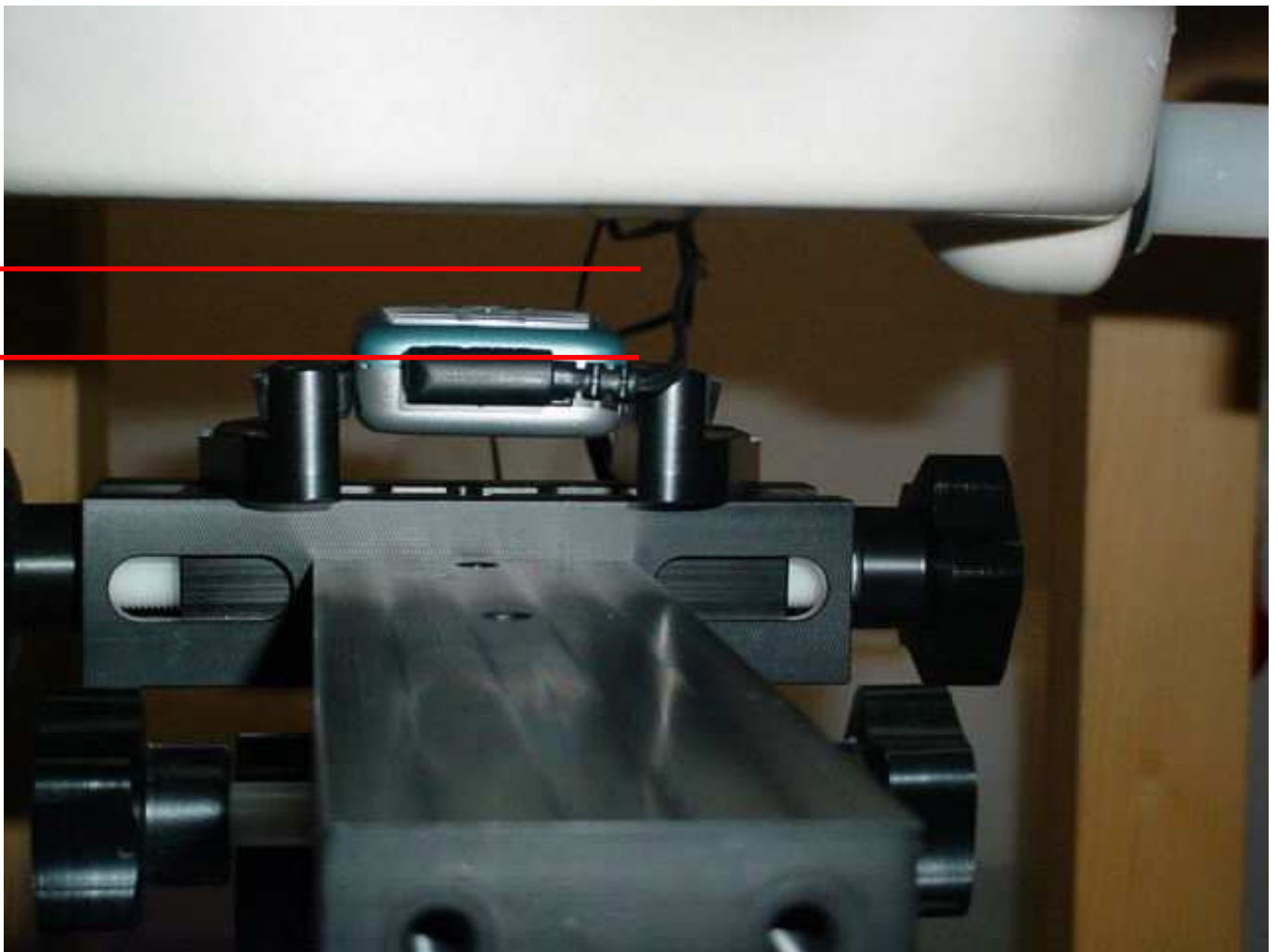
**Picture no. 21**

test position body front side with headset (distance to SAM : 15 mm)



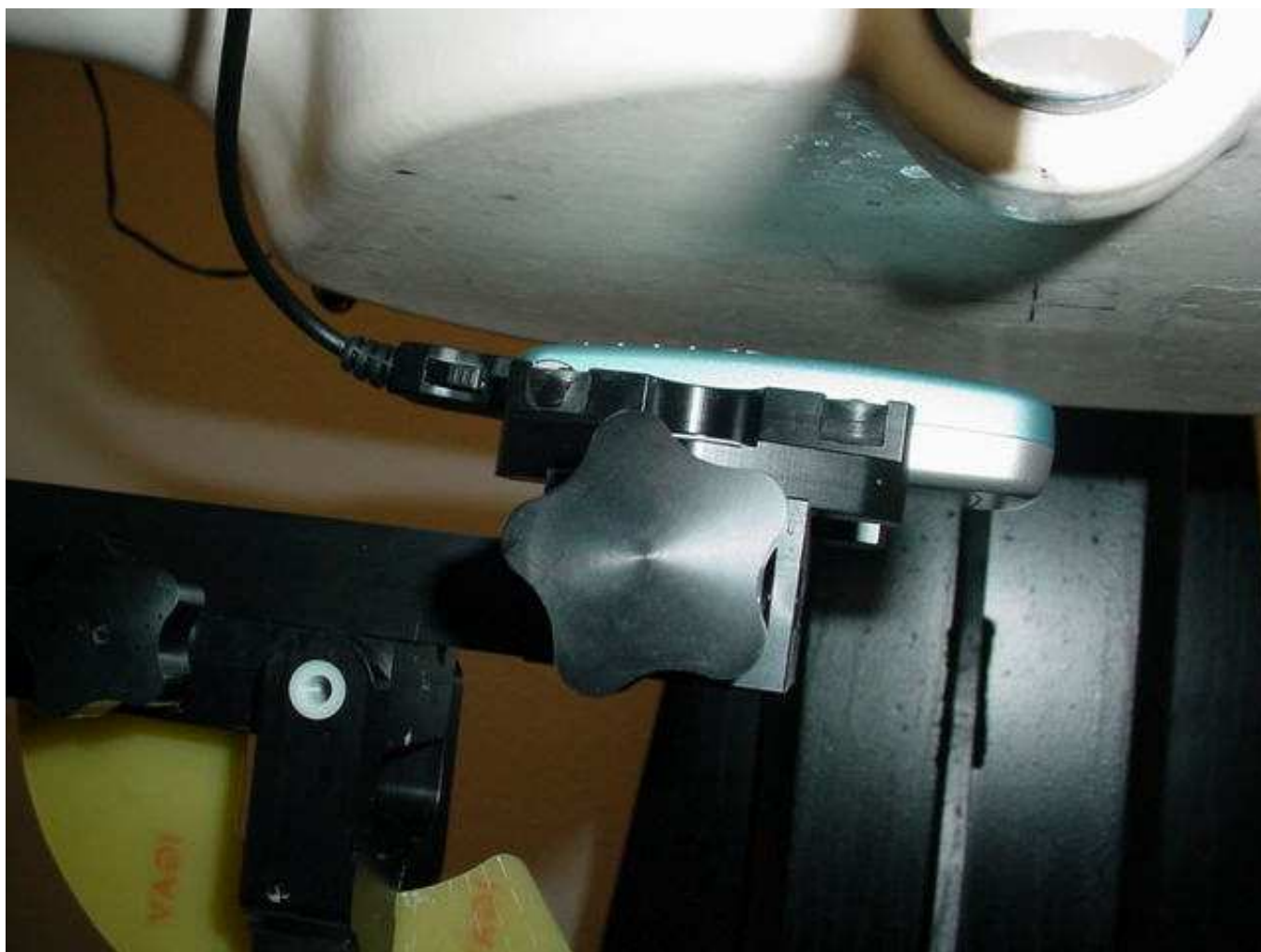
**Picture no. 22**

test position body front side with headset (distance to SAM : 15 mm)



**Picture no. 23**

test position body front side with cigar lighter adapter (distance to SAM : 15 mm)



**Picture no. 24**

test position body front side with data cable (distance to SAM : 15 mm)





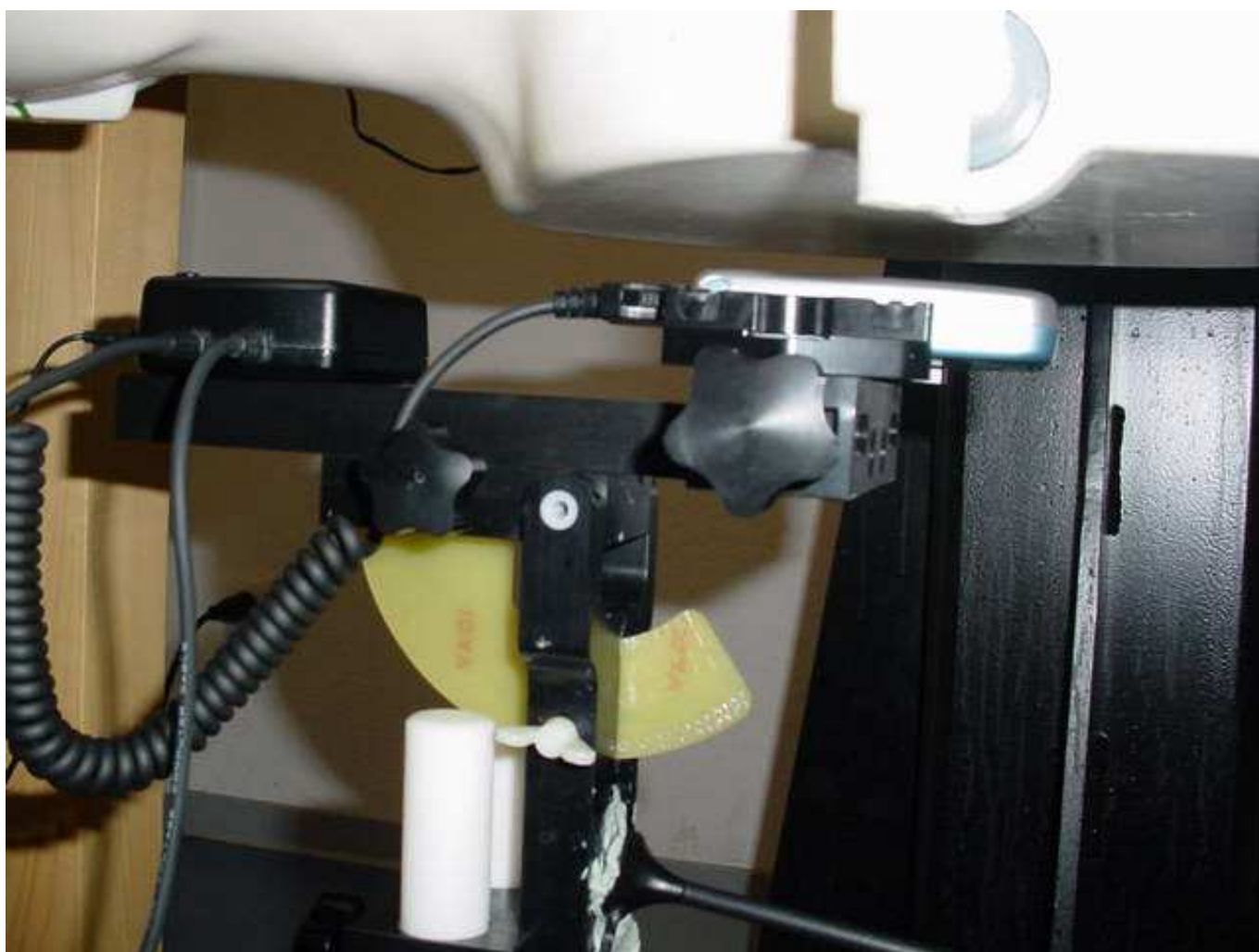
**Picture no. 25**

test position body front side with car kit (distance to SAM : 15 mm)



**Picture no. 26**

test position body rear side with car kit (distance to SAM : 15 mm)





**Picture no. 27**

test position body rear side with data cable (distance to SAM : 15 mm)



**Picture no. 28**

test position body rear side with headset (distance to SAM : 15 mm)



**Picture no. 29**

test position body rear side with headset (distance to SAM : 15 mm), close view



**Picture no. 30**

test position body rear side with cigar lighter adapter (distance to SAM : 15 mm)



**Picture no. 31**

liquid depth 1900 MHz head



**Picture no. 32**

liquid depth 1900 MHz body



**Picture no. 33**

liquid depth 850 MHz body





**Picture no. 34**

liquid depth 850 MHz head



## **Annex 4 Calibration parameters of E-field probe**

**Calibration parameters are described in the additional document**

**‘ Calibration data and Phantom information for test report no. 4-0902-11-01/03‘,**  
**provided together with this document.**