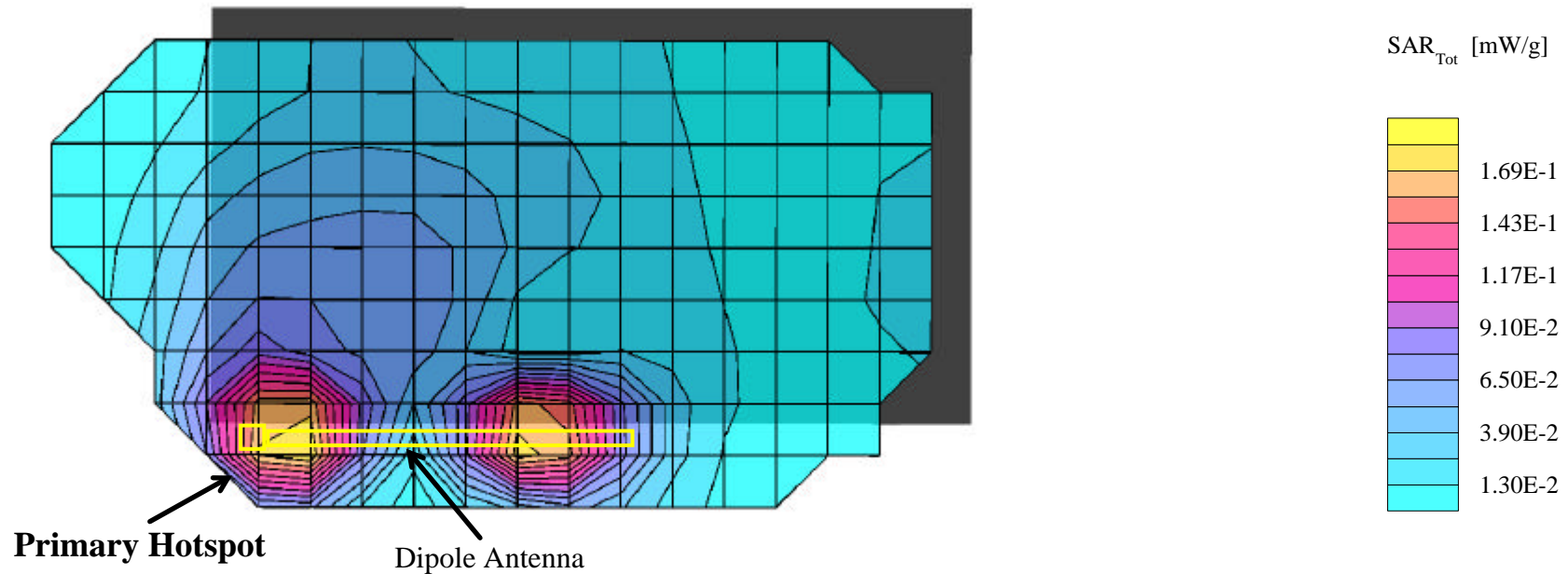

APPENDIX A - SAR MEASUREMENT DATA

Itronix Corporation FCC ID: KBCIX260AC750-MPI

SAM Phantom; Flat Section; Position: (0°,0°)
 Probe: ET3DV6 - SN1387; ConvF(4.90,4.90,4.90); Crest factor: 2.0
 1900 MHz Muscle: $\sigma = 1.55$ mho/m $\epsilon_r = 51.1$ $\rho = 1.00$ g/cm³
 Coarse: Dx = 15.0, Dy = 15.0, Dz = 10.0
 Cube 5x5x7
 SAR (1g): 0.192 mW/g, SAR (10g): 0.111 mW/g

Body SAR - Back of LCD Display (Closed) - Antenna Parallel to Planar Phantom (Stowed Position)
 1.5 cm Separation Distance from Back of LCD Display to Planar Phantom
 Itronix IX260 Rugged Laptop PC
 with Sierra Wireless AirCard 750 PCS GSM/GPRS Modem Card
 co-located with Cisco MPI-350 Mini-PCI DSSS WLAN Card
 PCS GPRS Mode
Single Transmit - PCS GPRS only
 Channel 661 [1880.00 MHz]
 Conducted Power: 27.9 dBm
 Ambient Temp: 22.8°C; Fluid Temp: 23.1°C
 Date Tested: March 24, 2003

Primary Hotspot Evaluation

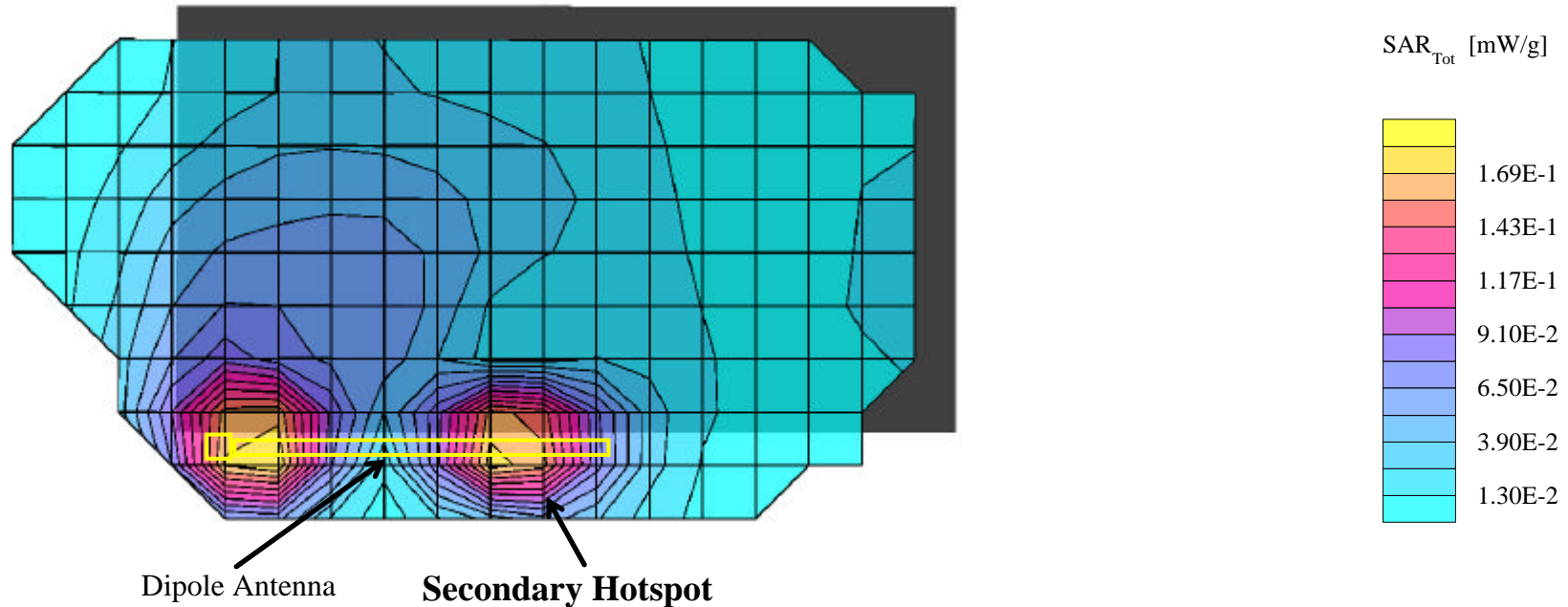


Itronix Corporation FCC ID: KBCIX260AC750-MPI

SAM Phantom; Flat Section; Position: (0°,0°)
 Probe: ET3DV6 - SN1387; ConvF(4.90,4.90,4.90); Crest factor: 2.0
 1900 MHz Muscle: $\sigma = 1.55$ mho/m $\epsilon_r = 51.1$ $\rho = 1.00$ g/cm³
 Coarse: Dx = 15.0, Dy = 15.0, Dz = 10.0
 Cube 5x5x7
 SAR (1g): 0.189 mW/g, SAR (10g): 0.108 mW/g

Body SAR - Back of LCD Display (Closed) - Antenna Parallel to Planar Phantom (Stowed Position)
 1.5 cm Separation Distance from Back of LCD Display to Planar Phantom
 Itronix IX260 Rugged Laptop PC
 with Sierra Wireless AirCard 750 PCS GSM/GPRS Modem Card
 co-located with Cisco MPI-350 Mini-PCI DSSS WLAN Card
 PCS GPRS Mode
Single Transmit - PCS GPRS only
 Channel 661 [1880.00 MHz]
 Conducted Power: 27.9 dBm
 Ambient Temp: 22.8°C; Fluid Temp: 23.1°C
 Date Tested: March 24, 2003

Secondary Hotspot Evaluation



Itronix Corporation FCC ID: KBCIX260AC750-MPI

SAM Phantom; Flat Section; Position: (0°,0°)
 Probe: ET3DV6 - SN1387; ConvF(4.90,4.90,4.90); Crest factor: 2.0
 1900 MHz Muscle: $\sigma = 1.55$ mho/m $\epsilon_r = 51.1$ $\rho = 1.00$ g/cm³
 Coarse: Dx = 15.0, Dy = 15.0, Dz = 10.0

Body SAR - Back of LCD Display (Closed) - Antenna Parallel to Planar Phantom (Stowed Position)

1.5 cm Separation Distance from Back of LCD Display to Planar Phantom

Itronix IX260 Rugged Laptop PC

with Sierra Wireless AirCard 750 PCS GSM/GPRS Modem Card

co-located with Cisco MPI-350 Mini-PCI DSSS WLAN Card

PCS GPRS Mode

Single Transmit - PCS GPRS only

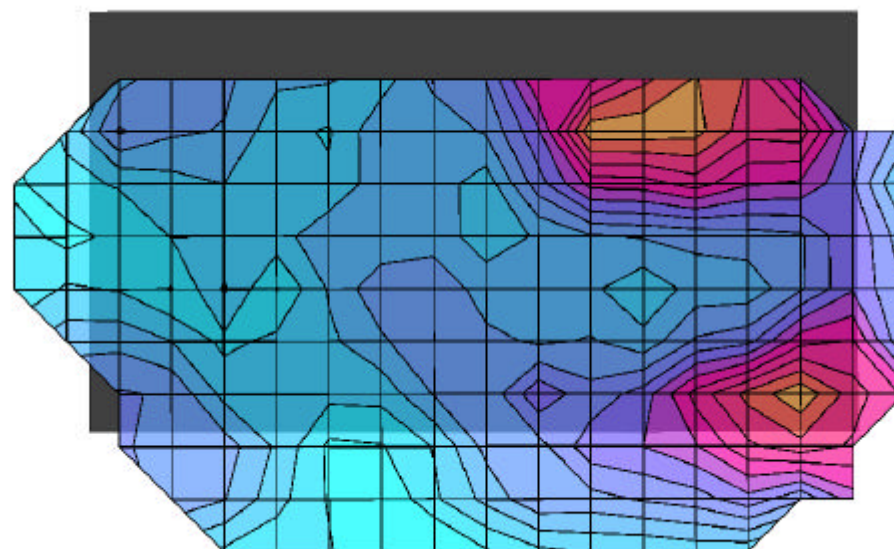
Channel 661 [1880.00 MHz]

Conducted Power: 27.9 dBm

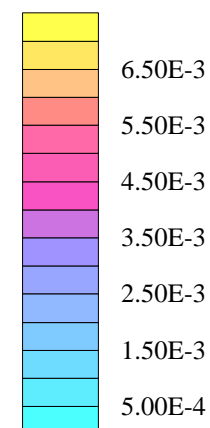
Ambient Temp: 22.8°C; Fluid Temp: 23.1°C

Date Tested: March 24, 2003

Coarse scan to show Left Half of LCD Display (Back Side)



SAR_{Tot} [mW/g]



Itronix Corporation FCC ID: KBCIX260AC750-MPI

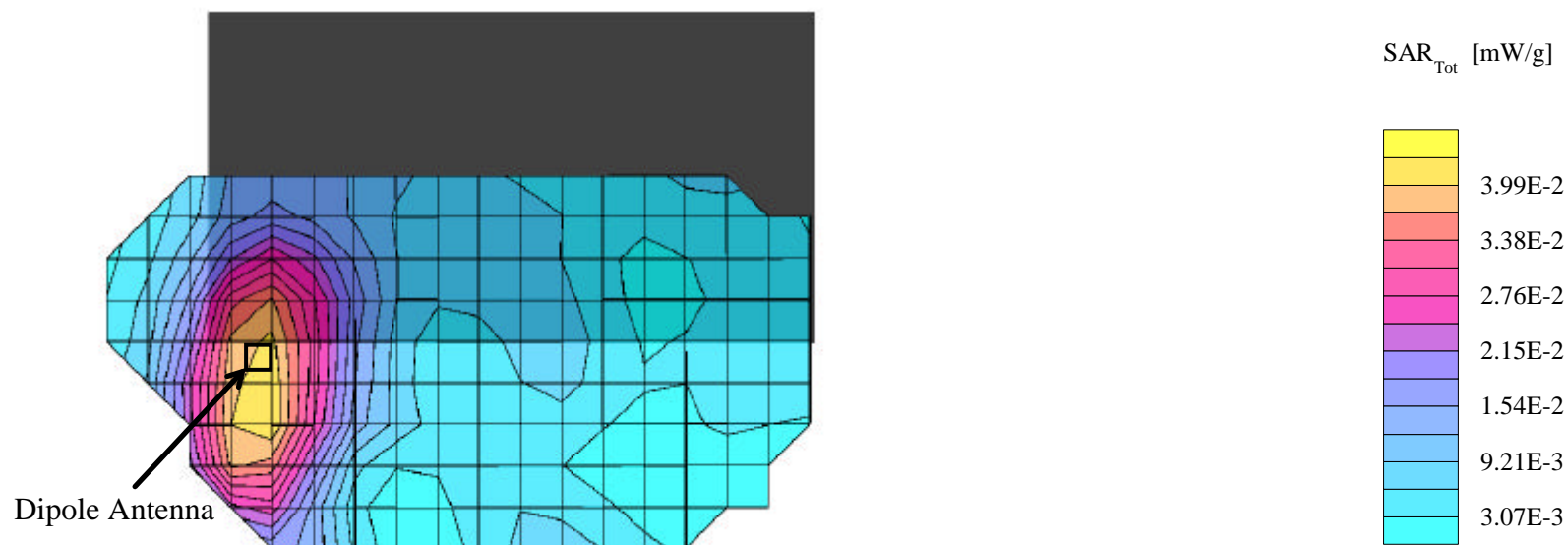
SAM Phantom; Flat Section; Position: (0°,0°)
 Probe: ET3DV6 - SN1387; ConvF(4.90,4.90,4.90); Crest factor: 2.0
 1900 MHz Muscle: $\sigma = 1.55$ mho/m $\epsilon_r = 51.1$ $\rho = 1.00$ g/cm³
 Coarse: Dx = 15.0, Dy = 15.0, Dz = 10.0
 Cube 5x5x7
 SAR (1g): 0.0361 mW/g, SAR (10g): 0.0229 mW/g

Body SAR - Back of LCD Display (Closed) - Antenna Perpendicular to Planar Phantom (180°)
 1.5 cm Separation Distance from Back of LCD Display to Planar Phantom

Itronix IX260 Rugged Laptop PC
 with Sierra Wireless AirCard 750 PCS GSM/GPRS Modem Card
 co-located with Cisco MPI-350 Mini-PCI DSSS WLAN Card
 PCS GPRS Mode

Single Transmit - PCS GPRS only

Channel 661 [1880.00 MHz]
 Conducted Power: 27.9 dBm
 Ambient Temp: 22.8°C; Fluid Temp: 23.1°C
 Date Tested: March 24, 2003



Itronix Corporation FCC ID: KBCIX260AC750-MPI

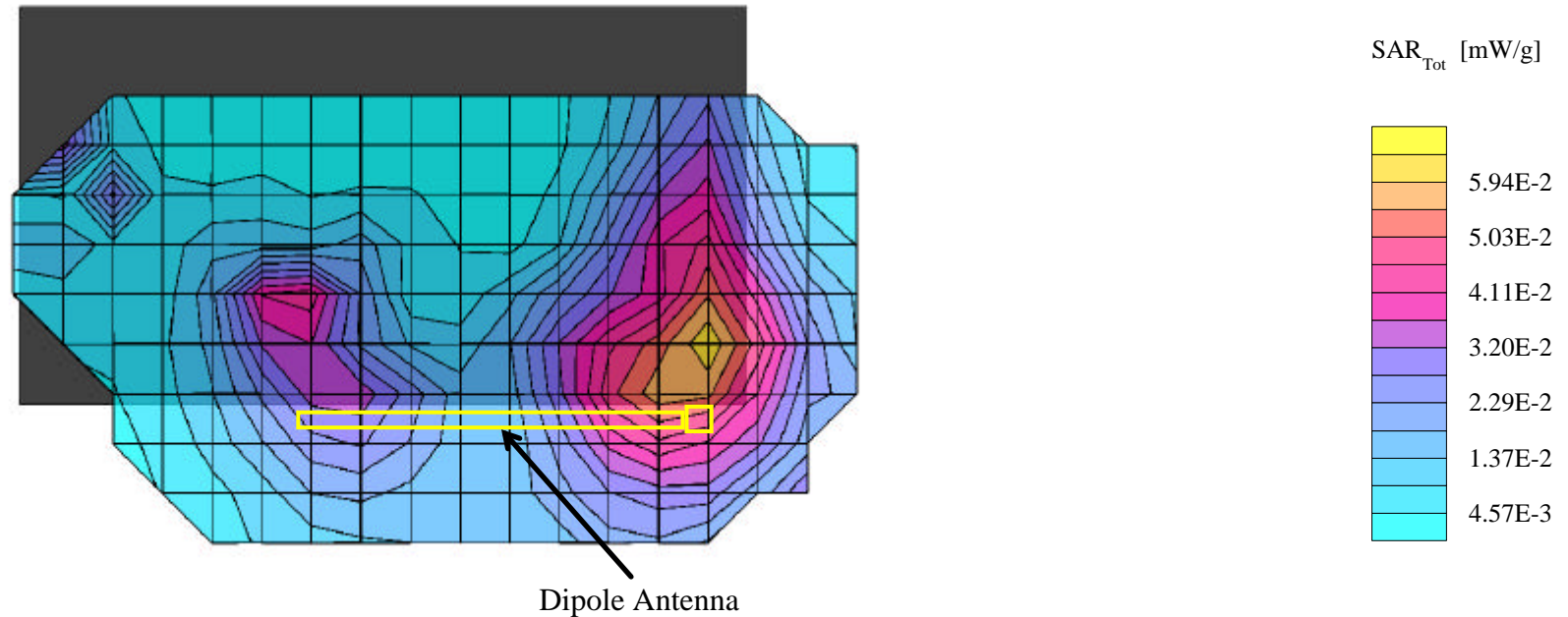
SAM Phantom; Flat Section; Position: (0°,0°)
 Probe: ET3DV6 - SN1387; ConvF(4.90,4.90,4.90); Crest factor: 2.0
 1900 MHz Muscle: $\sigma = 1.55$ mho/m $\epsilon_r = 51.1$ $\rho = 1.00$ g/cm³
 Coarse: Dx = 15.0, Dy = 15.0, Dz = 10.0
 Cube 5x5x7
 SAR (1g): 0.0537 mW/g, SAR (10g): 0.0347 mW/g

Body SAR - Bottom of Laptop PC (LCD Display Closed) - Antenna Parallel to Planar Phantom (Stowed Position)
 0.0 cm Separation Distance from Bottom of Laptop PC to Planar Phantom

Itronix IX260 Rugged Laptop PC
 with Sierra Wireless AirCard 750 PCS GSM/GPRS Modem Card
 co-located with Cisco MPI-350 Mini-PCI DSSS WLAN Card
 PCS GPRS Mode

Single Transmit - PCS GPRS only

Channel 661 [1880.00 MHz]
 Conducted Power: 27.9 dBm
 Ambient Temp: 22.8°C; Fluid Temp: 23.1°C
 Date Tested: March 24, 2003



Itronix Corporation FCC ID: KBCIX260AC750-MPI

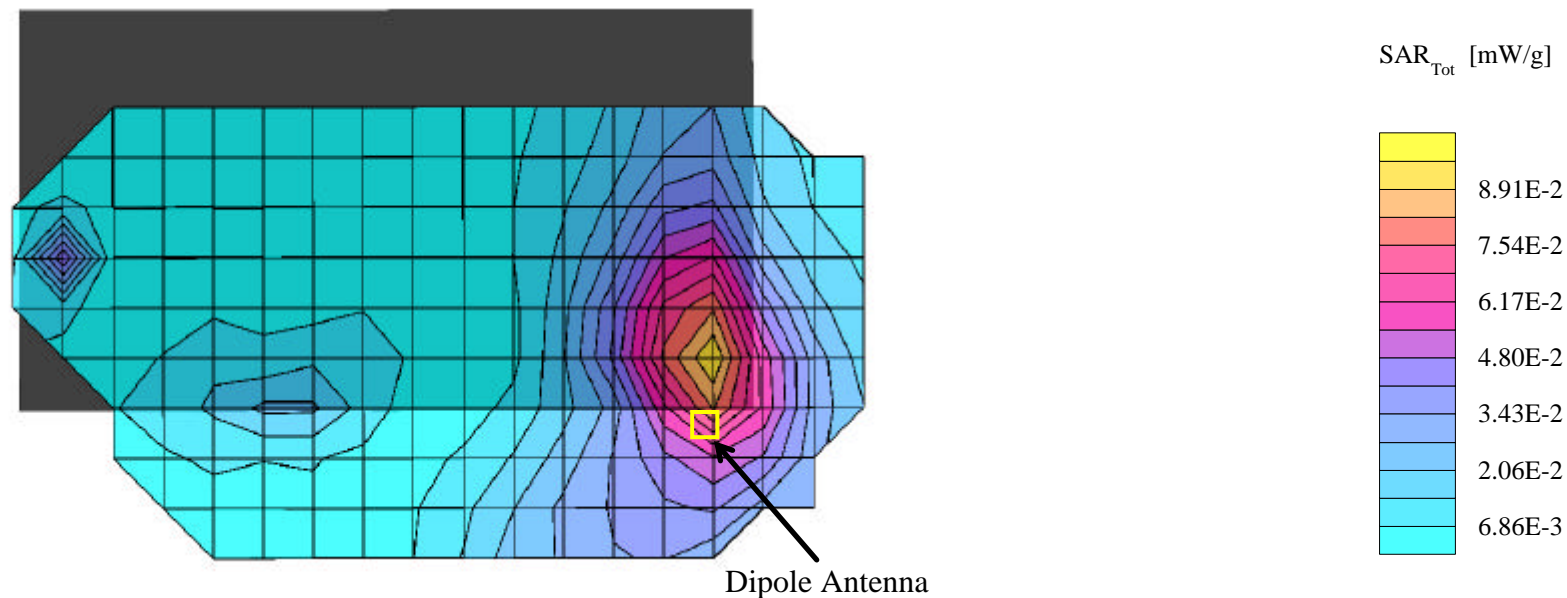
SAM Phantom; Flat Section; Position: (0°,0°)
 Probe: ET3DV6 - SN1387; ConvF(4.90,4.90,4.90); Crest factor: 2.0
 1900 MHz Muscle: $\sigma = 1.55$ mho/m $\epsilon_r = 51.1$ $\rho = 1.00$ g/cm³
 Coarse: Dx = 15.0, Dy = 15.0, Dz = 10.0
 Cube 5x5x7
 SAR (1g): 0.0837 mW/g, SAR (10g): 0.0502 mW/g

Body SAR - Bottom of Laptop PC (LCD Display Closed) - Antenna Perpendicular to Planar Phantom (Extended Position)
 0.0 cm Separation Distance from Bottom of Laptop PC to Planar Phantom

Itronix IX260 Rugged Laptop PC
 with Sierra Wireless AirCard 750 PCS GSM/GPRS Modem Card
 co-located with Cisco MPI-350 Mini-PCI DSSS WLAN Card
 PCS GPRS Mode

Single Transmit - PCS GPRS only

Channel 661 [1880.00 MHz]
 Conducted Power: 27.9 dBm
 Ambient Temp: 22.8°C; Fluid Temp: 23.1°C
 Date Tested: March 24, 2003



Itronix Corporation FCC ID: KBCIX260AC750-MPI

SAM Phantom; Flat Section; Position: (0°,0°)
Probe: ET3DV6 - SN1387; ConvF(4.90,4.90,4.90); Crest factor: 2.0
1900 MHz Muscle: $\sigma = 1.55$ mho/m $\epsilon_r = 51.1$ $\rho = 1.00$ g/cm³
Coarse: Dx = 15.0, Dy = 15.0, Dz = 10.0

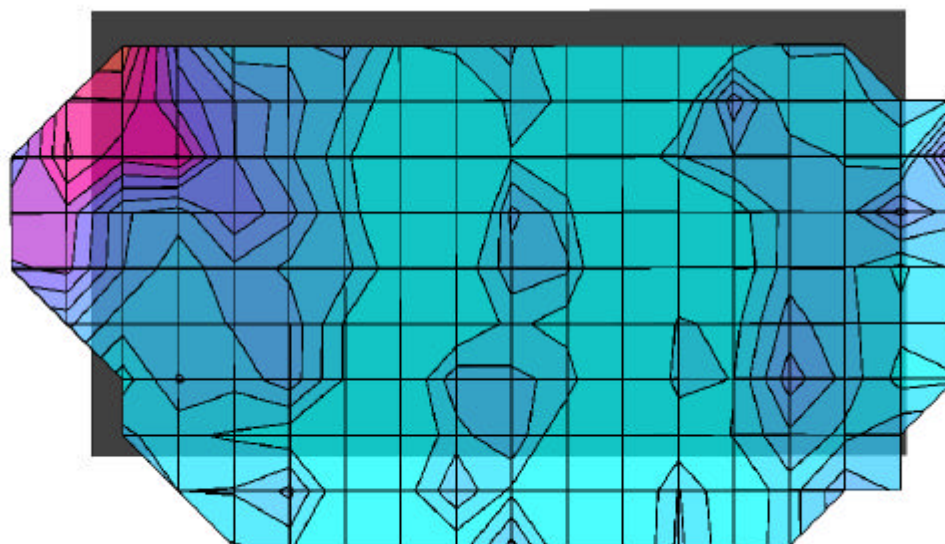
Body SAR - Bottom of Laptop PC (LCD Display Closed) - Antenna Perpendicular to Planar Phantom (Extended Position)
0.0 cm Separation Distance from Bottom of Laptop PC to Planar Phantom

Itronix IX260 Rugged Laptop PC
with Sierra Wireless AirCard 750 PCS GSM/GPRS Modem Card
co-located with Cisco MPI-350 Mini-PCI DSSS WLAN Card
PCS GPRS Mode

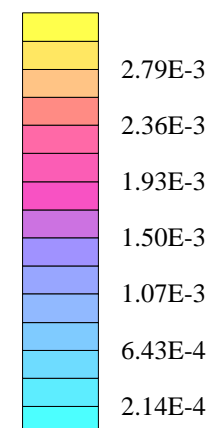
Single Transmit - PCS GPRS only

Channel 661 [1880.00 MHz]
Conducted Power: 27.9 dBm
Ambient Temp: 22.8°C; Fluid Temp: 23.1°C
Date Tested: March 24, 2003

Coarse scan to show Left Half of Bottom Side



SAR_{Tot} [mW/g]



Itronix Corporation FCC ID: KBCIX260AC750-MPI

SAM Phantom; Flat Section; Position: (90°,0°)

Probe: ET3DV6 - SN1387; ConvF(4.90,4.90,4.90); Crest factor: 2.0

1900 MHz Muscle: $\sigma = 1.55$ mho/m $\epsilon_r = 51.1$ $\rho = 1.00$ g/cm³

Coarse: Dx = 15.0, Dy = 15.0, Dz = 10.0

Cube 5x5x7

SAR (1g): 0.756 mW/g, SAR (10g): 0.426 mW/g

Body SAR - Right Side of LCD Display (Closed) - Antenna Parallel to Planar Phantom (Stowed Position)

1.5 cm Separation Distance from Dipole Antenna to Planar Phantom

Itronix IX260 Rugged Laptop PC

with Sierra Wireless AirCard 750 PCS GSM/GPRS Modem Card

co-located with Cisco MPI-350 Mini-PCI DSSS WLAN Card

PCS GPRS Mode

Single Transmit - PCS GPRS only

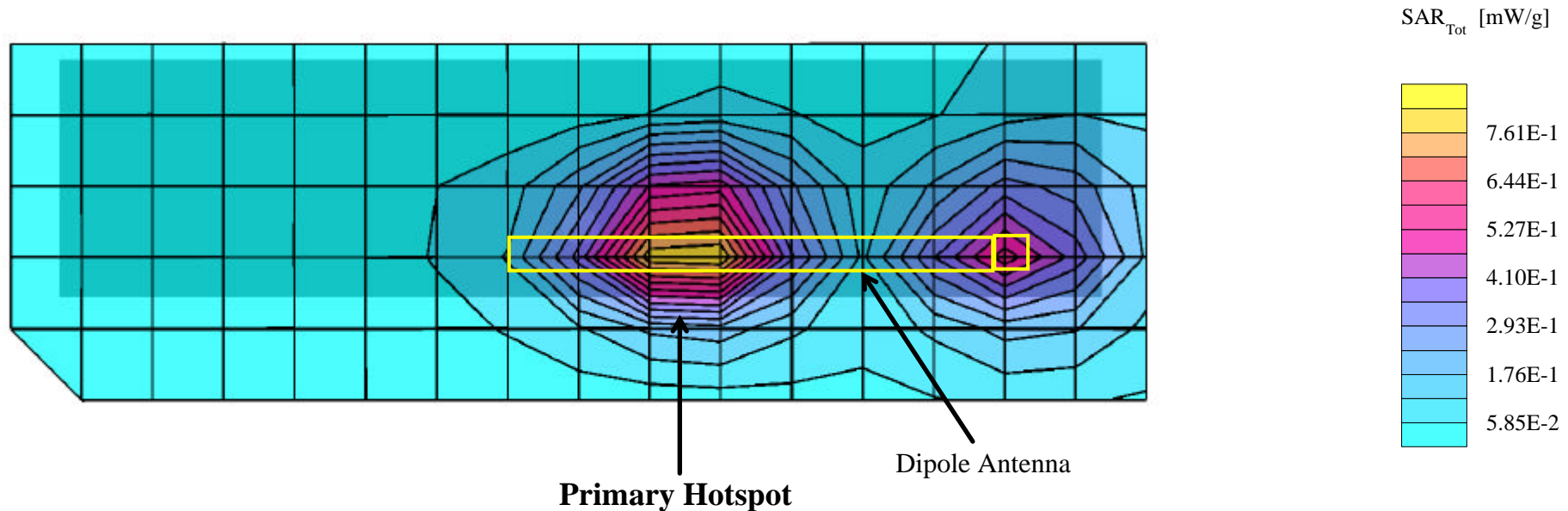
Channel 661 [1880.00 MHz]

Conducted Power: 27.9 dBm

Ambient Temp: 22.8°C; Fluid Temp: 23.1°C

Date Tested: March 24, 2003

Primary Hotspot Evaluation



Itronix Corporation FCC ID: KBCIX260AC750-MPI

SAM Phantom; Flat Section; Position: (90°,0°)

Probe: ET3DV6 - SN1387; ConvF(4.90,4.90,4.90); Crest factor: 2.0

1900 MHz Muscle: $\sigma = 1.55$ mho/m $\epsilon_r = 51.1$ $\rho = 1.00$ g/cm³

Coarse: Dx = 15.0, Dy = 15.0, Dz = 10.0

Cube 5x5x7

SAR (1g): 0.452 mW/g, SAR (10g): 0.260 mW/g

Body SAR - Right Side of LCD Display (Closed) - Antenna Parallel to Planar Phantom (Stowed Position)

1.5 cm Separation Distance from Dipole Antenna to Planar Phantom

Itronix IX260 Rugged Laptop PC

with Sierra Wireless AirCard 750 PCS GSM/GPRS Modem Card

co-located with Cisco MPI-350 Mini-PCI DSSS WLAN Card

PCS GPRS Mode

Single Transmit - PCS GPRS only

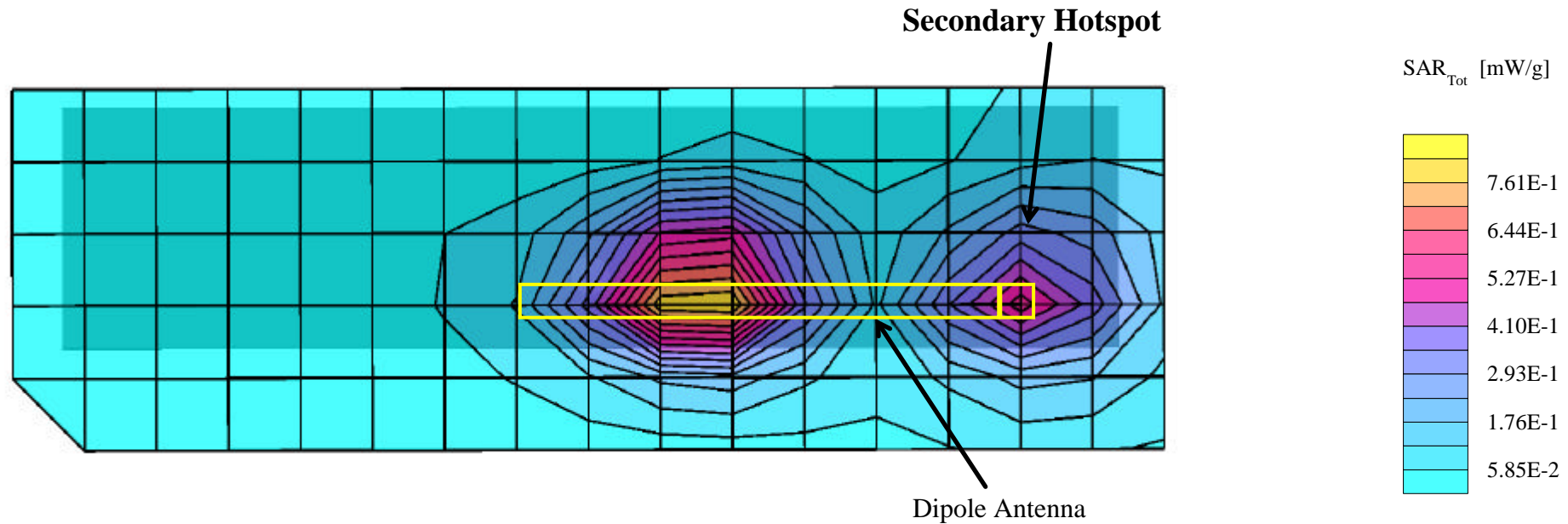
Channel 661 [1880.00 MHz]

Conducted Power: 27.9 dBm

Ambient Temp: 22.8°C; Fluid Temp: 23.1°C

Date Tested: March 24, 2003

Secondary Hotspot Evaluation



Itronix Corporation FCC ID: KBCIX260AC750-MPI

SAM Phantom; Flat Section; Position: (90°,0°)
 Probe: ET3DV6 - SN1387; ConvF(4.90,4.90,4.90); Crest factor: 2.0
 1900 MHz Muscle: $\sigma = 1.55$ mho/m $\epsilon_r = 51.1$ $\rho = 1.00$ g/cm³
 Coarse: Dx = 15.0, Dy = 15.0, Dz = 10.0
 Cube 5x5x7
 SAR (1g): 0.438 mW/g, SAR (10g): 0.255 mW/g

Body SAR - Right Side of LCD Display (Closed) - Antenna Parallel to Planar Phantom (Extended Position)
 1.5 cm Separation Distance from Dipole Antenna to Planar Phantom

Itronix IX260 Rugged Laptop PC
 with Sierra Wireless AirCard 750 PCS GSM/GPRS Modem Card
 co-located with Cisco MPI-350 Mini-PCI DSSS WLAN Card
 PCS GPRS Mode

Single Transmit - PCS GPRS only

Channel 661 [1880.00 MHz]
 Conducted Power: 27.9 dBm
 Ambient Temp: 22.8°C; Fluid Temp: 23.1°C
 Date Tested: March 24, 2003

