
	Name:	SKGBLERY01 Specification					Item:	
	Type:	G	Version:	V1.0	Owner:	R&D	Security level:	Internal publish

# SKGBLERY01 Specification


## Change Record

Version	Implementing Date	Change Reason	Change Description	Drafter
1.0	2022.8.29	Initial	Initial	Yulun Zhu

	Name:	SKGBLERY01 Specification					Item:	
	Type:	G	Version:	V1.0	Owner:	R&D	Security level:	Internal publish

## Catalogue

<b>1 Parameter.....</b>	<b>3</b>
<b>2 Apply To.....</b>	<b>3</b>
<b>3 Related Record.....</b>	<b>3</b>
<b>4 External info. &amp; Function.....</b>	<b>4</b>
4.1 Hardware & Firmware Version.....	4
4.2 External Apperance And Parameter Requirements.....	4

	Name:	SKGBLERY01 Specification					Item:	
	Type:	G	Version:	V1.0	Owner:	R&D	Security level:	Internal publish

## 1 Parameter


Chip Model	RTL8762CJF
Operation Voltage	3.3V
Operation Frequency	2402 MHz ~ 2480 MHz
Transmitting Power	0dbm
Receive Sensitivity	RX sensitivity:-97dBm
RAM	128KB
FLASH	512 KB
Quantity of GPIO	26
Frequency of Crystal	40 MHz
Module Size	11.6 * 16.4 * 2.2 mm
Packaging Type	SMT
Operating Temperature	-20℃~+70℃
Storage Temperature	-40 ℃ ~ + 85 ℃
Antenna Gain (peak)	2 dBi (peak)

## 2 Apply To

All the Bluetooth products of SKG

## 3 Related Record

Item	Form Number	Form Name	Department	Record Retention time
NA	NA	NA	NA	NA
NA	NA	NA	NA	NA

	Name:	SKGBLERY01 Specification					Item:	
	Type:	G	Version:	V1.0	Owner:	R&D	Security level:	Internal publish

## 4 External info. & Function


### 4.1 Hardware & Firmware Version

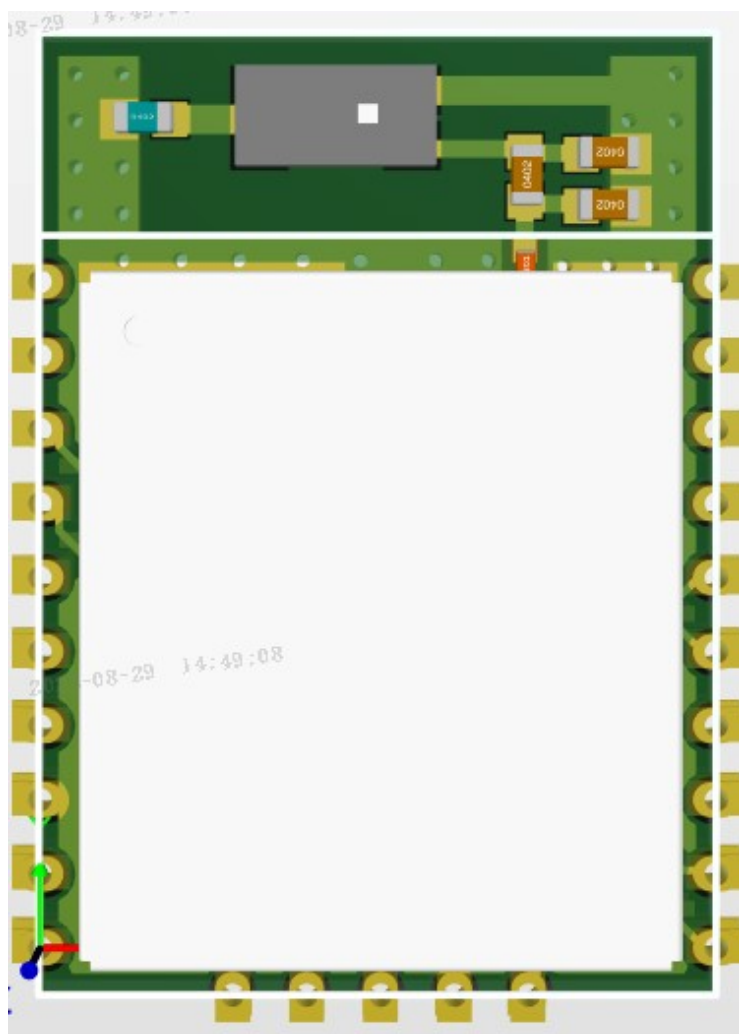
Bluetooth Module model number	SKGBLERY01	
Hardware version	H1.1	
Firmware Version	V1.0	

### 4.2 External Apperance And Parameter Requirements

Mainboard PCB external size: 16.4mm(Length)\*11.6mm(Width),Tolerance:  $\pm 0.1$ mm;

PCB Thickness: 1.2mm, Tolerance:  $\pm 0.12$ mm。 Whole Height(include Shielded enclosure): 2.2mm。

	Name:		SKGBLERY01 Specification				Item:	
	Type:	G	Version:	V1.0	Owner:	R&D	Security level:	Internal publish



## FCC STATEMENT :

This device complies with part 15 of the FCC Rules. Operation is subject to the following two conditions: (1) this device may not cause harmful interference, and (2) this device must accept any interference received, including interference that may cause undesired operation.

Any changes or modifications not expressly approved by the party responsible for compliance could void the user's authority to operate the equipment.

NOTE: This equipment has been tested and found to comply with the limits for a Class B digital device, pursuant to Part 15 of the FCC Rules. These limits are designed to provide reasonable protection against harmful interference in a residential installation. This equipment generates, uses and can radiate radio frequency energy and, if not installed and used in accordance with the instructions, may cause harmful interference to radio communications. However, there is no guarantee that interference will not occur in a particular installation.


If this equipment does cause harmful interference to radio or television reception,

which can be determined by turning the equipment off and on, the user is encouraged to try to correct the interference by one or more of the following measures:

- Reorient or relocate the receiving antenna.
- Increase the separation between the equipment and receiver.
- Connect the equipment into an outlet on a circuit different from that to which the receiver is connected.
- Consult the dealer or an experienced radio/TV technician for help.

## FCC Radiation Exposure Statement:

This equipment complies with FCC radiation exposure limits set forth for an uncontrolled environment. This equipment should be installed and operated with minimum distance 20cm between the radiator & your body.

	Name:	SKGBLERY01 Specification					Item:	
	Type:	G	Version:	V1.0	Owner:	R&D	Security level:	Internal publish

## Integration instructions for host product manufacturers according to KDB 996369 D03 OEM Manual v01

### 2.2 List of applicable FCC rules

FCC Part 15 Subpart C 15.247

### 2.3 Specific operational use conditions

The module SKGBLERY01 is a module with Bluetooth function.

Operation Frequency: 2402MHz~2480MHz

Type: Ceramic Antenna

Gain: 2dBi

The module can be used for mobile or applications with a maximum 2dBi antenna. The host manufacturer installing this module into their product must ensure that the final composite product complies with the FCC requirements by a technical assessment or evaluation to the FCC rules, including the transmitter operation. The host manufacturer has to be aware not to provide information to the end user regarding how to install or remove this RF module in the user's manual of the end product which integrates this module. The end user manual shall include all required regulatory information/warning as shown in this manual.

### 2.4 Limited module procedures

Not applicable. The module is a Single module and complies with the requirement of FCC Part 15.212.

### 2.5 Trace antenna designs

Not applicable. The module has its own antenna, and doesn't need a host's printed board microstrip trace antenna etc.

### 2.6 RF exposure considerations

The module must be installed in the host equipment such that at least 20cm is maintained between the antenna and users' body; and if RF exposure statement or module layout is changed, then the host product manufacturer required to take responsibility of the module through a change in FCC ID or new application. The FCC ID of the module cannot be used on the final product. In these circumstances, the host manufacturer will be responsible for re-evaluating the end product (including the transmitter) and obtaining a separate FCC authorization.

### 2.7 Antennas

Antenna Specification are as follows:

Type: Ceramic Antenna

Gain: 2dBi

This device is intended only for host manufacturers under the following conditions: The transmitter module may not be co-located with any other transmitter or antenna; The module shall be only used with the internal antenna(s) that has been originally tested and certified with this module. The antenna must be either permanently attached or employ a 'unique' antenna coupler. As long as the conditions above are met, further transmitter test will not be required. However, the host manufacturer is still responsible for testing their end-product for any additional compliance requirements required with this module installed (for example, digital device emissions, PC peripheral requirements, etc.).

### 2.8 Label and compliance information

Host product manufacturers need to provide a physical or e-label stating "Contains FCC ID:

**2AYVT-SKGBLERY01**" with their finished product.

### 2.9 Information on test modes and additional testing requirements


Data transfer module demo board can control the EUT work in RF test mode at specified test channel.

Additional testing, Part 15 Subpart B disclaimer.

The module without unintentional-radiator digital circuit, so the module does not require an evaluation by FCC Part 15 Subpart B. The host should be evaluated by the FCC Subpart B.

### 2.10 Additional testing, Part 15 Subpart B disclaimer

The modular transmitter is only FCC authorized for FCC Part 15 Subpart C 15.247 and that the host product manufacturer is responsible for compliance to any other FCC rules that apply to the host not covered by the modular transmitter grant of certification. If the grantee markets their product as being Part 15 Subpart B compliant (when it also contains unintentional-radiator digital circuitry), then the grantee shall provide a notice stating that the final host product still requires Part 15 Subpart B compliance testing with the modular transmitter installed.

	Name:	SKGBLERY01 Specification					Item:	
	Type:	G	Version:	V1.0	Owner:	R&D	Security level:	Internal publish

### **OEM integration instructions:**

This device is intended only for OEM integrators under the following conditions:

The transmitter module may not be co-located with any other transmitter or antenna. The module shall be only used with the external antenna(s) that has been originally tested and certified with this module.

As long as the conditions above are met, further transmitter test will not be required. However, the OEM integrator is still responsible for testing their end-product for any additional compliance requirements required with this module installed (for example, digital device emissions, PC peripheral requirements, etc.).

### **Validity of using the module certification:**

In the event that these conditions cannot be met (for example certain laptop configurations or co-location with another transmitter), then the FCC authorization for this module in combination with the host equipment is no longer considered valid and the FCC ID of the module cannot be used on the final product. In these circumstances, the OEM integrator will be responsible for re-evaluating the end product (including the transmitter) and obtaining a separate FCC authorization.

### **End product labeling:**

The final end product must be labeled in a visible area with the following: "Contains Transmitter Module FCC ID: **2AYVT-SKGBLERY01**".

If the size of the end product is smaller than 8x10cm, then additional FCC part 15.19 statement is required to be available in the users manual: This device complies with Part 15 of FCC rules. Operation is subject to the following two conditions:

- (1) this device may not cause harmful interference and
- (2) this device must accept any interference received, including interference that may cause undesired operation.

### **Information that must be placed in the end user manual:**

The OEM integrator has to be aware not to provide information to the end user regarding how to install or remove this RF module in the user's manual of the end product which integrates this module. The end user manual shall include all required regulatory information/warning as show in this manual.

### **IC Caution**

- English

This device contains licence-exempt transmitter(s)/receiver(s) that comply with Innovation, Science and Economic Development Canada's licence-exempt RSS(s). Operation is subject to the following two conditions:

This device may not cause interference.

This device must accept any interference, including interference that may cause undesired operation of the device.

The device has been evaluated to meet general RF exposure requirements. The device can be used under fixed/mobile exposure conditions. The minimum separation distance is 20 cm.

- French:

L'émetteur/récepteur exempt de licence contenu dans le présent appareil est conforme aux CNR d'Innovation, Sciences et Développement économique Canada applicables aux appareils radio exempts de licence. L'exploitation est autorisée aux deux conditions suivantes :

L'appareil ne doit pas produire de brouillage;

L'appareil doit accepter tout brouillage radioélectrique subi, même si le brouillage est susceptible d'en compromettre le fonctionnement.

L'appareil a été évalué pour répondre aux exigences générales d'exposition RF. L'appareil peut être utilisé dans des conditions d'exposition fixes / mobiles. La distance de séparation minimale est de 20 cm.