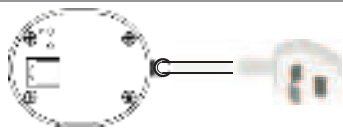
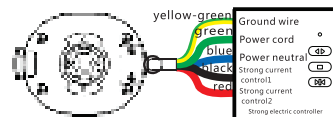


Motor wiring instructions



Direct plug-in power supply: It can realize remote control, dry contact control and pull start function.

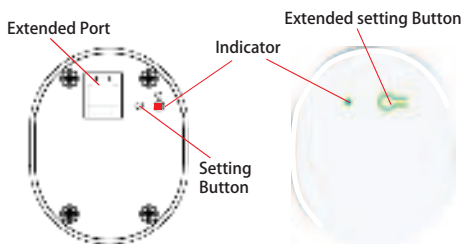


Five-core wire connection: It can realize strong current control, regardless of whether the strong current control line has electricity or not, it can realize remote control, dry contact control, and pull start functions.

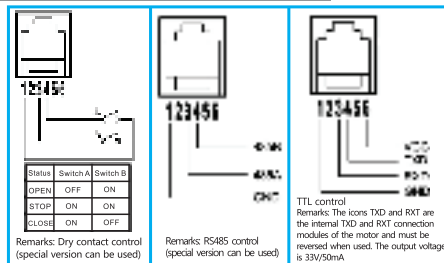
Note: The voltage of the strong current control line is AC90~240V 50/60HZ

When the red wire is connected and the black wire is disconnected, the motor rotates forward; when the black wire is connected and the red wire is disconnected, the motor reverses; when both the black and red wires are disconnected, the motor stops.

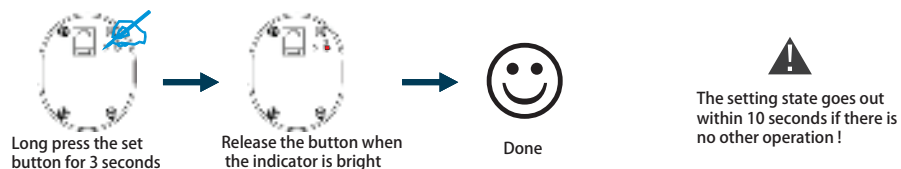
Motor button description



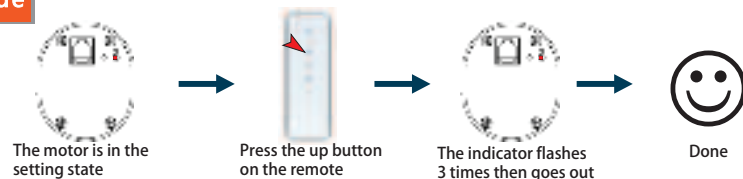
Weak current control wiring



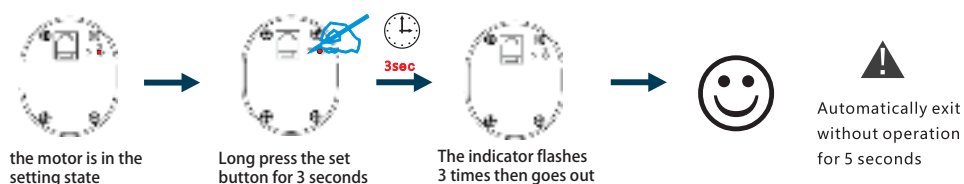
Enter setting state



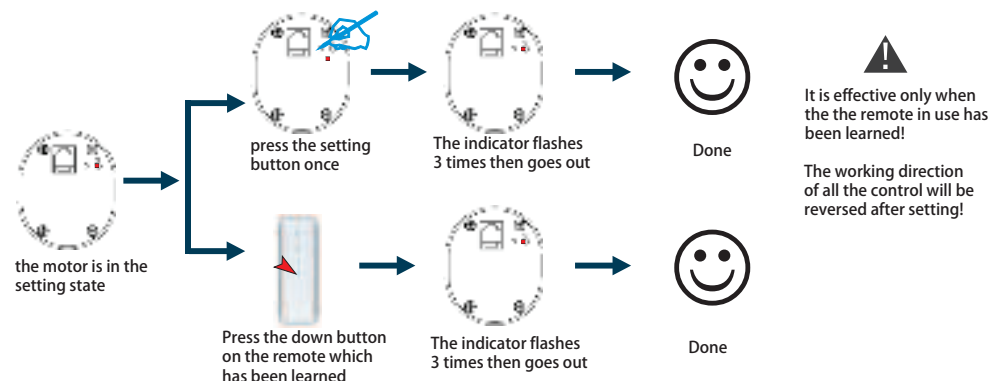
Learn code



Restore factory settings (clear code)



Reverse Settings



FCC Warning

This device complies with Part 15 of the FCC Rules.

Operation is subject to the following two conditions:

- (1) this device may not cause harmful interference.
- (2) this device must accept any interference received, including interference that may cause undesired operation.

This device has been tested and found to comply with the limits for a Class B digital device, pursuant to Part 15 of the FCC Rules. These limits are designed to provide reasonable protection against harmful interference in a residential installation. This device generates, uses and can radiate radio frequency energy and, if not installed and used in accordance with the instructions, may cause harmful interference to radio communications.

However, there is no guarantee that interference will not occur in a particular installation. If this device does cause harmful interference to radio or television reception, which can be determined by turning the device off and on, the user is encouraged to try to correct the interference by one or more of the following measures:

- Reorient or relocate the receiving antenna.
- Increase the separation between the device and receiver.
- Connect the device into an outlet on a circuit different from that to which the receiver is connected.
- Consult the dealer or an experienced radio/TV technician for help

Changes or modifications not expressly approved by the party responsible for compliance could void the user's authority to operate the equipment

Finish Curtain track



Step 5:
After installing the belt clamp, install the foot corner assembly.
Please note that the corner assembly direction.


Step 7:
Pull out the belt about 10-15cm from main gear face side, make the second mark with 10 teeth space from the first mark.



The diagram shows the belt being pulled out further from the main gear. A second mark is being made on the belt, 10 teeth space from the first mark.



Step 13:
Heat carrier arm and other components, then tighten the carrier screw.
Put into back cover and , tighten the screw.
The part of vee gear box is assembled:



1. During the five-year warranty period, if the product becomes unusable due to normal wear and tear, offer free maintenance for the product.

July 2000: The total percentage value of the 100 party, including the share of services provided in the low toward the economy, was about 10 percent in the third year.

As previously stated, with the method for accurate collection of actual, historical and simulated responses, the **EXPERIMENTAL DESIGN** and the subsequent development of separate from, simulated, responses. To produce our results and the subsequent, this experiment is the collection of a simulated collection of responses for electricity and economic simulation of the design. In the presentation of final a simulated design and simulation will have produced a simulated design and simulation of the simulation and simulation results. The first step in the simulation of the design and simulation results is the collection of the simulation of the design and simulation results.

Product Information
 Product Name _____
 Product Type _____
 Package Size _____
 Net Unit Weight _____
 Grade Information _____
 Country of Origin _____
 Component Name _____
 Country of Production _____

Problem Statement	Given Information	Find	Answer

[Subscribe here](#)