

FCC SAR Test Report

APPLICANT : Motorola Mobility LLC
EQUIPMENT : Mobile Cellular Phone
BRAND NAME : Motorola
MODEL NAME : XT2341-4
FCC ID : IHDT56AM3
STANDARD : FCC 47 CFR Part 2 (2.1093)

We, Sporton International Inc. (Shenzhen), would like to declare that the tested sample has been evaluated in accordance with the test procedures given in 47 CFR Part 2.1093 and FCC KDB and has been in compliance with the applicable technical standards.

The test results in this report apply exclusively to the tested model / sample. Without written approval of Sporton International Inc. (Shenzhen), the test report shall not be reproduced except in full.



Approved by: Si Zhang

Sporton International Inc. (Shenzhen)
1/F, 2/F, Bldg 5, Shiling Industrial Zone, Xinwei Village, Xili, Nanshan, Shenzhen, 518055
People's Republic of China



Table of Contents

1. Statement of Compliance	4
2. Administration Data	5
3. Guidance Applied	5
4. Equipment Under Test (EUT) Information	6
4.1 General Information	6
4.2 General LTE SAR Test and Reporting Considerations	7
5. Proximity Sensor Triggering Test	9
6. RF Exposure Limits	10
6.1 Uncontrolled Environment	10
6.2 Controlled Environment	10
7. Specific Absorption Rate (SAR)	11
7.1 Introduction	11
7.2 SAR Definition	11
8. System Description and Setup	12
8.1 E-Field Probe	13
8.2 Data Acquisition Electronics (DAE)	13
8.3 Phantom	14
8.4 Device Holder	15
9. Measurement Procedures	16
9.1 Spatial Peak SAR Evaluation	16
9.2 Power Reference Measurement	17
9.3 Area Scan	17
9.4 Zoom Scan	18
9.5 Volume Scan Procedures	18
9.6 Power Drift Monitoring	18
10. Test Equipment List	19
11. System Verification	20
11.1 Tissue Simulating Liquids	20
11.2 Tissue Verification	21
11.3 System Performance Check Results	22
12. RF Exposure Positions	23
12.1 Ear and handset reference point	23
12.2 Definition of the cheek position	24
12.3 Definition of the tilt position	25
12.4 Body Worn Accessory	26
12.5 Product Specific 10g SAR Exposure	27
12.6 Wireless Router	27
13. Conducted RF Output Power (Unit: dBm)	28
14. Antenna Location	38
15. SAR Test Results	39
15.1 Head SAR	42
15.2 Hotspot SAR	44
15.3 Body Worn Accessory SAR	47
15.4 Product Specific SAR	49
15.5 Repeated SAR Measurement	51
16. Simultaneous Transmission Analysis	52
16.1 Head Exposure Conditions	53
16.2 Hotspot Exposure Conditions	54
16.3 Body-Worn Accessory Exposure Conditions	55
16.4 Product Specific Exposure Conditions	56
16.5 SPLSR Evaluation and Analysis	57
17. Uncertainty Assessment	62
18. References	63
Appendix A. Plots of System Performance Check	
Appendix B. Plots of High SAR Measurement	
Appendix C. DASY Calibration Certificate	
Appendix D. Test Setup Photos	
Appendix E. Conducted RF Output Power Table	



Revision History

[illegible]

1. Statement of Compliance

The maximum results of Specific Absorption Rate (SAR) found during testing for **Motorola Mobility LLC, Mobile Cellular Phone, XT2341-4**, are as follows.

Highest 1g SAR Summary						
Equipment Class	Frequency Band		Head (Separation 0mm)	Hotspot (Separation 5mm)	Body-worn (Separation 5mm)	Highest Simultaneous Transmission
			1g SAR (W/kg)			1g SAR (W/kg)
Licensed	GSM	GSM850	0.37	1.14	1.14	1.59
	WCDMA	Band V	0.31	1.05	1.05	
	LTE	Band 26/5	0.31	1.04	1.04	
		Band 7	0.13	1.36	1.32	
		Band 41/38	<0.10	1.33	1.25	
DTS	WLAN	2.4GHz WLAN	1.31	1.33	1.33	1.59
NII		5GHz WLAN	0.73	1.15	1.15	1.51
DSS	Bluetooth	2.4GHz Bluetooth	0.18	0.13	0.13	1.44
Highest 10g SAR Summary						
Equipment Class	Frequency Band		Product Specific 10g SAR (W/kg) (Separation 0mm)			Highest Simultaneous Transmission 10g SAR (W/kg)
License	LTE	Band 7	3.37			3.41
		Band 41/38	3.41			
DTS	WLAN	2.4GHz WLAN	1.74			2.49
NII		5GHz WLAN	2.53			2.58
Date of Testing:			2023/5/10 ~ 2023/5/25			
Remark: This device supports both LTE B5/B38 and B26/B41. Since the supported frequency span for LTE B5/B38 falls completely within the supports frequency span for LTE B26/B41, both LTE bands have the same target power, and both LTE bands share the same transmission path; therefore, SAR was only assessed for LTE B26/B41.						

Declaration of Conformity:

The test results with all measurement uncertainty excluded are presented in accordance with the regulation limits or requirements declared by manufacturers.

Comments and Explanations:

The declared of product specification for EUT presented in the report are provided by the manufacturer, and the manufacturer takes all the responsibilities for the accuracy of product specification.

This device is in compliance with Specific Absorption Rate (SAR) for general population/uncontrolled exposure limits (1.6 W/kg for Partial-Body 1g SAR, 4.0 W/kg for Product Specific 10g SAR) specified in FCC 47 CFR part 2 (2.1093) and ANSI/IEEE C95.1-1992, and had been tested in accordance with the measurement methods and procedures specified in IEEE 1528-2013 and FCC KDB publications.



2. Administration Data

Sporton International Inc. (Shenzhen) is accredited to ISO/IEC 17025:2017 by American Association for Laboratory Accreditation with Certificate Number 5145.01.

Testing Laboratory			
Test Firm	Sporton International Inc. (Shenzhen)		
Test Site Location	1/F, 2/F, Bldg 5, Shiling Industrial Zone, Xinwei Village, Xili, Nanshan, Shenzhen, 518055 People's Republic of China TEL: +86-755-86379589 FAX: +86-755-86379595		
Test Site No.	Sporton Site No.	FCC Designation No.	FCC Test Firm Registration No.
	SAR03-SZ	CN1256	421272

Applicant	
Company Name	Motorola Mobility LLC
Address	222 W,Merchandise Mart Plaza, Chicago IL 60654 USA

Manufacturer	
Company Name	Motorola Mobility LLC
Address	222 W,Merchandise Mart Plaza, Chicago IL 60654 USA

3. Guidance Applied

The Specific Absorption Rate (SAR) testing specification, method, and procedure for this device is in accordance with the following standards:

- FCC 47 CFR Part 2 (2.1093)
- ANSI/IEEE C95.1-1992
- IEEE 1528-2013
- FCC KDB 865664 D01 SAR Measurement 100 MHz to 6 GHz v01r04
- FCC KDB 865664 D02 SAR Reporting v01r02
- FCC KDB 447498 D01 General RF Exposure Guidance v06
- FCC KDB 648474 D04 SAR Evaluation Considerations for Wireless Handsets v01r03
- FCC KDB 248227 D01 802.11 Wi-Fi SAR v02r02
- FCC KDB 616217 D04 SAR for laptop and tablets v01r02
- FCC KDB 941225 D01 3G SAR Procedures v03r01
- FCC KDB 941225 D05 SAR for LTE Devices v02r05
- FCC KDB 941225 D06 Hotspot Mode SAR v02r01

4. Equipment Under Test (EUT) Information

4.1 General Information

Product Feature & Specification	
Equipment Name	Mobile Cellular Phone
Brand Name	Motorola
Model Name	XT2341-4
FCC ID	IHDT56AM3
IMEI Code	Sample 1: IMEI 1: 356960280008256 IMEI 2: 356960280008264 Sample 2: IMEI 1: 356960280012712 IMEI 2: 356960280012720
Wireless Technology and Frequency Range	GSM850: 824 MHz ~ 849 MHz WCDMA Band V: 824 MHz ~ 849 MHz LTE Band 5: 824 MHz ~ 849 MHz LTE Band 7: 2500 MHz ~ 2570 MHz LTE Band 26: 814 MHz ~ 849 MHz LTE Band 38: 2570 MHz ~ 2620 MHz LTE Band 41 : 2496 MHz ~ 2690 MHz WLAN 2.4GHz Band: 2412 MHz ~ 2462 MHz WLAN 5.2GHz Band: 5180 MHz ~ 5240 MHz WLAN 5.3GHz Band: 5260 MHz ~ 5320 MHz WLAN 5.5GHz Band: 5500 MHz ~ 5700 MHz WLAN 5.8GHz Band: 5745 MHz ~ 5825 MHz Bluetooth: 2402 MHz ~ 2480 MHz NFC : 13.56 MHz
Mode	GSM/GPRS/EGPRS RMC/AMR 12.2Kbps HSDPA/HSUPA DC-HSDPA HSPA+ (16QAM uplink is not supported) LTE: QPSK, 16QAM WLAN 2.4GHz 802.11b/g/n HT20 WLAN 5GHz 802.11a/n HT20 WLAN 5GHz 802.11ac VHT20 Bluetooth BR/EDR/LE NFC: ASK
HW Version	DVT2
SW Version	TLA33.30
GSM / (E)GPRS Transfer mode	Class B – EUT cannot support Packet Switched and Circuit Switched Network simultaneously but can automatically switch between Packet and Circuit Switched Network.
EUT Stage	Identical Prototype
Remark: <ol style="list-style-type: none"> 1. This device supports VoIP in GPRS, EGPRS, WCDMA and LTE (e.g. for 3rd-party VoIP), LTE supports VoLTE operation. 2. This device 2.4GHz WLAN support hotspot operation and Bluetooth support tethering applications. 3. This device 5.2GHz WLAN/5.8GHz WLAN support hotspot operation, and 5.2GHz WLAN/5.8GHz WLAN supports WiFi Direct (GC/GO), and 5.3GHz / 5.5GHz supports WiFi Direct (GC only). 4. This device does not support DTM operation and supports GPRS/EGPRS mode up to multi-slot class 12. 5. For dual SIM card mobile has two SIM slots and supports dual SIM dual standby. The WWAN radio transmission will be enabled by either one SIM at a time (single active). After pre-scan two SIM cards power, we found test result of the SIM1 was the worse, so we chose SIM1 slot to perform all tests. 6. There are two different types of EUT, they are dual SIM card and single SIM card. The difference that is only SIM Slots, all the other are same, so we chose dual SIM card to perform all the testing. 7. The device implements Proximity sensors/receiver detect mechanism/hotspot trigger reduced power for the power management for SAR compliance at different exposure conditions (head, body-worn, hotspot, extremity). The device 	

- will invoke corresponding work scenarios power level base on frequency bands/antennas, which can refer to appendix E. power table.
8. There are two samples. The difference between them could be referred to the XT2341-4_Operational Description of Product Equality Declaration which is exhibited separately. According to the difference, we choose sample 1 for full testing and sample 2 for worst case verification.
 9. The device has two headsets. Only suppliers are different, so we chose headset 1 to perform full SAR testing and headset 2 for worst case verification.

4.2 General LTE SAR Test and Reporting Considerations

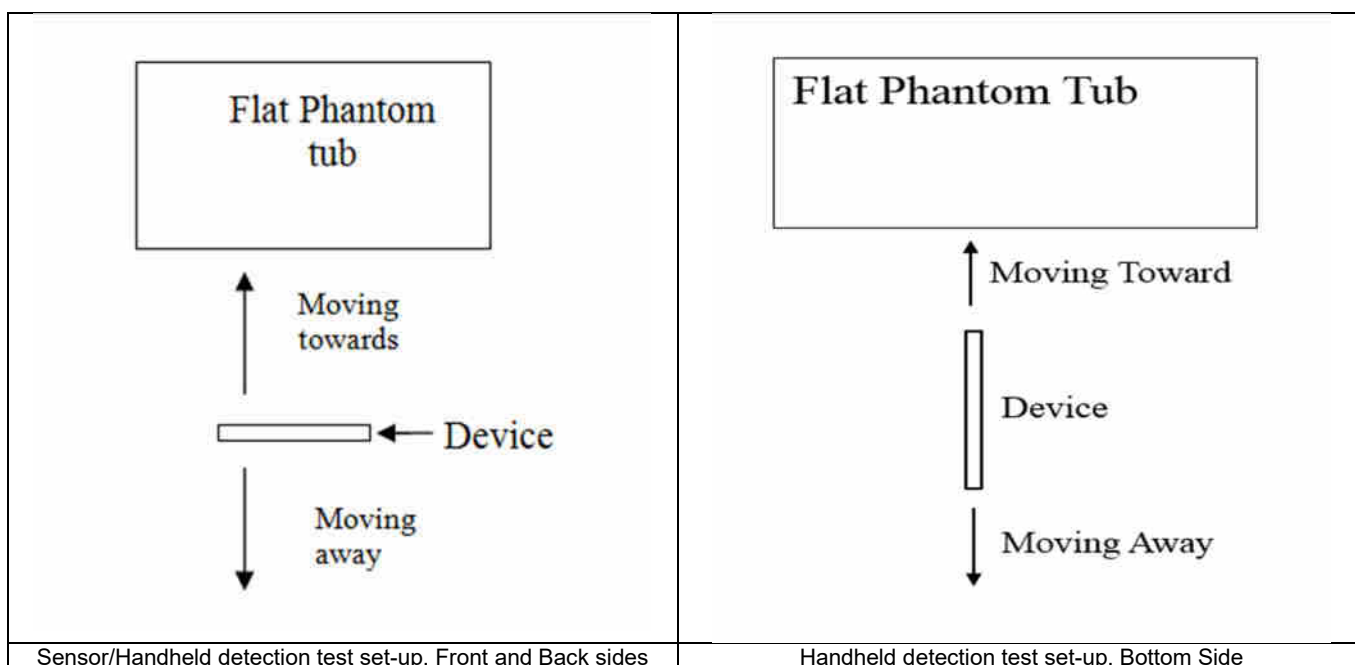
Summarized necessary items addressed in KDB 941225 D05 v02r05								
FCC ID	IHDT56AM3							
Equipment Name	Mobile Cellular Phone							
Operating Frequency Range of each LTE transmission band	LTE Band 5: 824 MHz ~ 849 MHz LTE Band 7: 2500 MHz ~ 2570 MHz LTE Band 26: 814 MHz ~ 849 MHz LTE Band 38: 2570 MHz ~ 2620 MHz LTE Band 41 : 2496 MHz ~ 2690 MH							
Channel Bandwidth	LTE Band 5:1.4MHz, 3MHz, 5MHz, 10MHz LTE Band 7: 5MHz, 10MHz, 15MHz, 20MHz LTE Band 26: 1.4MHz, 3MHz, 5MHz, 10MHz, 15MHz LTE Band 38: 5MHz, 10MHz, 15MHz, 20MHz LTE Band 41: 5MHz, 10MHz, 15MHz, 20MHz							
uplink modulations used	QPSK / 16QAM							
LTE Voice / Data requirements	Voice and Data							
LTE Release Version	R12, Cat4							
CA Support	Not Supported							
LTE MPR permanently built-in by design	Table 6.2.3-1: Maximum Power Reduction (MPR) for Power Class 1, 2 and 3							
	Modulation	Channel bandwidth / Transmission bandwidth (N_{RB})						MPR (dB)
		1.4 MHz	3.0 MHz	5 MHz	10 MHz	15 MHz	20 MHz	
	QPSK	> 5	> 4	> 8	> 12	> 16	> 18	≤ 1
	16 QAM	≤ 5	≤ 4	≤ 8	≤ 12	≤ 16	≤ 18	≤ 1
	16 QAM	> 5	> 4	> 8	> 12	> 16	> 18	≤ 2
	64 QAM	≤ 5	≤ 4	≤ 8	≤ 12	≤ 16	≤ 18	≤ 2
	64 QAM	> 5	> 4	> 8	> 12	> 16	> 18	≤ 3
	256 QAM	≥ 1					≤ 5	
LTE A-MPR	In the base station simulator configuration, Network Setting value is set to NS_01 to disable A-MPR during SAR testing and the LTE SAR tests was transmitting on all TTI frames (Maximum TTI)							
Spectrum plots for RB configuration	A properly configured base station simulator was used for the SAR and power measurement; therefore, spectrum plots for each RB allocation and offset configuration are not included in the SAR report.							
Power reduction applied to satisfy SAR compliance	Yes, when operating in Proximity sensors/receiver/hotspot detect mechanism, head/body-worm/hotspot/extremity will trigger reduced power for some WWAN bands applied to satisfy SAR compliance, the detail please referred to section 13.							

Transmission (H, M, L) channel numbers and frequencies in each LTE band										
LTE Band 5										
	Bandwidth 1.4 MHz		Bandwidth 3 MHz		Bandwidth 5 MHz		Bandwidth 10 MHz			
	Ch. #	Freq. (MHz)	Ch. #	Freq. (MHz)	Ch. #	Freq. (MHz)	Ch. #	Freq. (MHz)		
L	20407	824.7	20415	825.5	20425	826.5	20450	829		
M	20525	836.5	20525	836.5	20525	836.5	20525	836.5		
H	20643	848.3	20635	847.5	20625	846.5	20600	844		
LTE Band 7										
	Bandwidth 5 MHz		Bandwidth 10 MHz		Bandwidth 15 MHz		Bandwidth 20 MHz			
	Ch. #	Freq. (MHz)	Ch. #	Freq. (MHz)	Ch. #	Freq. (MHz)	Ch. #	Freq. (MHz)		
L	20775	2502.5	20800	2505	20825	2507.5	20850	2510		
M	21100	2535	21100	2535	21100	2535	21100	2535		
H	21425	2567.5	21400	2565	21375	2562.5	21350	2560		
LTE Band 26										
	Bandwidth 1.4 MHz		Bandwidth 3 MHz		Bandwidth 5 MHz		Bandwidth 10 MHz		Bandwidth 15 MHz	
	Ch. #	Freq. (MHz)	Ch. #	Freq. (MHz)	Ch. #	Freq. (MHz)	Ch. #	Freq. (MHz)	Ch. #	Freq. (MHz)
L	26697	814.7	26705	815.5	26715	816.5	26740	819	26765	821.5
M	26865	831.5	26865	831.5	26865	831.5	26865	831.5	26865	831.5
H	27033	848.3	27025	847.5	27015	846.5	26990	844	26965	841.5
LTE Band 38										
	Bandwidth 5 MHz		Bandwidth 10 MHz		Bandwidth 15 MHz		Bandwidth 20 MHz			
	Ch. #	Freq. (MHz)	Ch. #	Freq. (MHz)	Ch. #	Freq. (MHz)	Ch. #	Freq. (MHz)		
L	37775	2572.5	37800	2575	37825	2577.5	37850	2580		
M	38000	2595	38000	2595	38000	2595	38000	2595		
H	38225	2617.5	38200	2615	38175	2612.5	38150	2610		
LTE Band 41										
	Bandwidth 5 MHz		Bandwidth 10 MHz		Bandwidth 15 MHz		Bandwidth 20 MHz			
	Ch. #	Freq. (MHz)	Ch. #	Freq. (MHz)	Ch. #	Freq. (MHz)	Ch. #	Freq. (MHz)		
L	39675	2498.5	39700	2501	39725	2503.5	39750	2506		
LM	40148	2545.8	40160	2547	40173	2548.3	40185	2549.5		
M	40620	2593	40620	2593	40620	2593	40620	2593		
HM	41093	2640.3	41080	2639	41068	2637.8	41055	2636.5		
H	41565	2687.5	41540	2685	41515	2682.5	41490	2680		

5. Proximity Sensor Triggering Test

<Proximity Sensor Triggering Distance>:

1. Proximity sensor triggering distance testing was performed according to the procedures outlined in KDB 616217 D04 section 6.2, and EUT moving further away from the flat phantom and EUT moving toward the flat phantom were both assessed and the tissue-equivalent medium for highest frequency (5850MHz) and lowest (2600MHz) frequency was used for proximity sensor triggering testing.
2. Capacitive proximity sensors placed coincident with antenna elements at the top and bottom ends of the phone are utilized to determine when the device comes in proximity of the user's body at the front or back of the device. The output power will reduce to body worn power level when top and bottom sensor pad be detected.
3. The sensors used to detect the proximity of the user's body at the front or back surface of the device use a detection threshold distance. The data shown in the sections below shows the distance(s). When front or back body worn condition is detected reduced power will be active.
4. The device employs proximity sensors also can detect the presence of the user's a finger or hand when handheld state at the front/back/bottom side of the device. When front/back/bottom side of handheld condition is detected reduced power will be active.
5. For verification of compliance of power reduction scheme, additional SAR testing with EUT transmitting at full RF power at a conservative trigger distance -1mm was performed:



<P-Sensor>

Proximity Sensor Triggering Distance (mm)				
Position	Front		Back	
	Moving towards	Moving away	Moving towards	Moving away
Minimum	15	16	22	23

<Handheld for ANT0>

Proximity Sensor Triggering Distance (mm)						
Position	Front		Back		Bottom Side	
	Moving towards	Moving away	Moving towards	Moving away	Moving towards	Moving away
Minimum	21	22	27	28	28	29

6. RF Exposure Limits

6.1 Uncontrolled Environment

Uncontrolled Environments are defined as locations where there is the exposure of individuals who have no knowledge or control of their exposure. The general population/uncontrolled exposure limits are applicable to situations in which the general public may be exposed or in which persons who are exposed as a consequence of their employment may not be made fully aware of the potential for exposure or cannot exercise control over their exposure. Members of the general public would come under this category when exposure is not employment-related; for example, in the case of a wireless transmitter that exposes persons in its vicinity.

6.2 Controlled Environment

Controlled Environments are defined as locations where there is exposure that may be incurred by persons who are aware of the potential for exposure, (i.e. as a result of employment or occupation). In general, occupational/controlled exposure limits are applicable to situations in which persons are exposed as a consequence of their employment, who have been made fully aware of the potential for exposure and can exercise control over their exposure. The exposure category is also applicable when the exposure is of a transient nature due to incidental passage through a location where the exposure levels may be higher than the general population/uncontrolled limits, but the exposed person is fully aware of the potential for exposure and can exercise control over his or her exposure by leaving the area or by some other appropriate means.

Limits for Occupational/Controlled Exposure (W/kg)

Whole-Body	Partial-Body	Hands, Wrists, Feet and Ankles
0.4	8.0	20.0

Limits for General Population/Uncontrolled Exposure (W/kg)

Whole-Body	Partial-Body	Hands, Wrists, Feet and Ankles
0.08	1.6	4.0

Whole-Body SAR is averaged over the entire body, partial-body SAR is averaged over any 1gram of tissue defined as a tissue volume in the shape of a cube. SAR for hands, wrists, feet and ankles is averaged over any 10 grams of tissue defined as a tissue volume in the shape of a cube.

7. Specific Absorption Rate (SAR)

7.1 Introduction

SAR is related to the rate at which energy is absorbed per unit mass in an object exposed to a radio field. The SAR distribution in a biological body is complicated and is usually carried out by experimental techniques or numerical modeling. The standard recommends limits for two tiers of groups, occupational/controlled and general population/uncontrolled, based on a person's awareness and ability to exercise control over his or her exposure. In general, occupational/controlled exposure limits are higher than the limits for general population/uncontrolled.

7.2 SAR Definition

The SAR definition is the time derivative (rate) of the incremental energy (dW) absorbed by (dissipated in) an incremental mass (dm) contained in a volume element (dv) of a given density (ρ). The equation description is as below:

$$\text{SAR} = \frac{d}{dt} \left(\frac{dW}{dm} \right) = \frac{d}{dt} \left(\frac{dW}{\rho dv} \right)$$

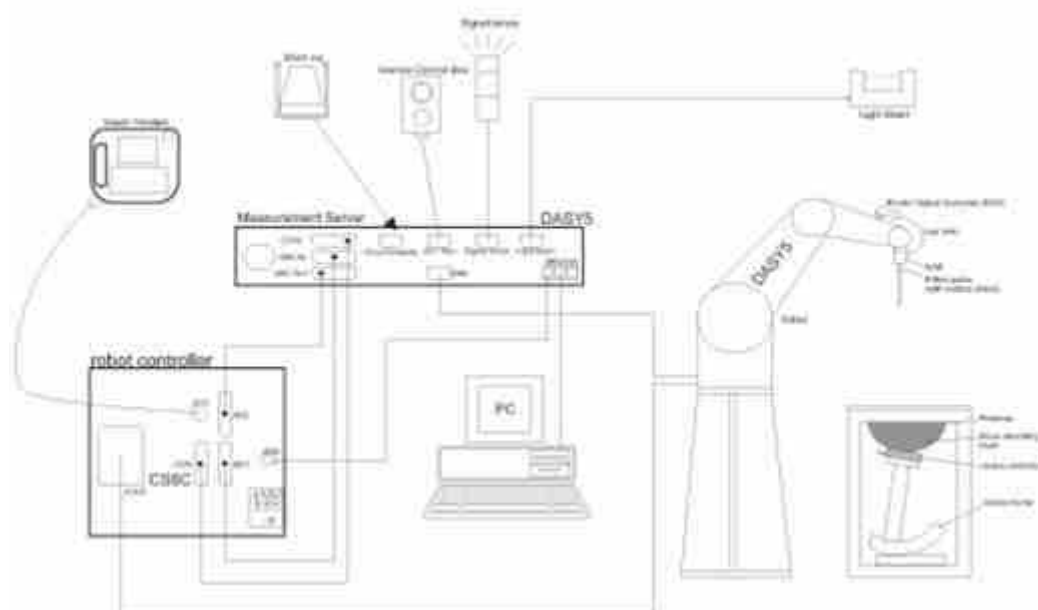
SAR is expressed in units of Watts per kilogram (W/kg)

$$\text{SAR} = \frac{\sigma |E|^2}{\rho}$$

Where: σ is the conductivity of the tissue, ρ is the mass density of the tissue and E is the RMS electrical field strength.

8. System Description and Setup

The DASY5 system used for performing compliance tests consists of the following items:




- A standard high precision 6-axis robot with controller, teach pendant and software. An arm extension for accommodating the data acquisition electronics (DAE).
- An isotropic Field probe optimized and calibrated for the targeted measurement.
- A data acquisition electronics (DAE) which performs the signal amplification, signal multiplexing, AD-conversion, offset measurements, mechanical surface detection, collision detection, etc. The unit is battery powered with standard or rechargeable batteries. The signal is optically transmitted to the EOC.
- The Electro-optical converter (EOC) performs the conversion from optical to electrical signals for the digital communication to the DAE. To use optical surface detection, a special version of the EOC is required. The EOC signal is transmitted to the measurement server.
- The function of the measurement server is to perform the time critical tasks such as signal filtering, control of the robot operation and fast movement interrupts.
- The Light Beam used is for probe alignment. This improves the (absolute) accuracy of the probe positioning.
- A computer running WinXP or Win7 and the DASY5 software.
- Remote control and teach pendant as well as additional circuitry for robot safety such as warning lamps, etc.
- The phantom, the device holder and other accessories according to the targeted measurement.


8.1 E-Field Probe

The SAR measurement is conducted with the dosimetric probe (manufactured by SPEAG). The probe is specially designed and calibrated for use in liquid with high permittivity. The dosimetric probe has special calibration in liquid at different frequency. This probe has a built in optical surface detection system to prevent from collision with phantom.

<EX3DV4 Probe>

Construction	Symmetric design with triangular core Built-in shielding against static charges PEEK enclosure material (resistant to organic solvents, e.g., DGBE)	
Frequency	10 MHz – >6 GHz Linearity: ± 0.2 dB (30 MHz – 6 GHz)	
Directivity	± 0.3 dB in TSL (rotation around probe axis) ± 0.5 dB in TSL (rotation normal to probe axis)	
Dynamic Range	10 μ W/g – >100 mW/g Linearity: ± 0.2 dB (noise: typically <1 μ W/g)	
Dimensions	Overall length: 337 mm (tip: 20 mm) Tip diameter: 2.5 mm (body: 12 mm) Typical distance from probe tip to dipole centers: 1 mm	

<ES3DV3 Probe>

Construction	Symmetric design with triangular core Interleaved sensors Built-in shielding against static charges PEEK enclosure material (resistant to organic solvents, e.g., DGBE)	
Frequency	10 MHz – 4 GHz; Linearity: ± 0.2 dB (30 MHz – 4 GHz)	
Directivity	± 0.2 dB in TSL (rotation around probe axis) ± 0.3 dB in TSL (rotation normal to probe axis)	
Dynamic Range	5 μ W/g – >100 mW/g; Linearity: ± 0.2 dB	
Dimensions	Overall length: 337 mm (tip: 20 mm) Tip diameter: 3.9 mm (body: 12 mm) Distance from probe tip to dipole centers: 3.0 mm	

8.2 Data Acquisition Electronics (DAE)

The data acquisition electronics (DAE) consists of a highly sensitive electrometer-grade preamplifier with auto-zeroing, a channel and gain-switching multiplexer, a fast 16 bit AD-converter and a command decoder and control logic unit. Transmission to the measurement server is accomplished through an optical downlink for data and status information as well as an optical uplink for commands and the clock.


The input impedance of the DAE is 200 MOhm; the inputs are symmetrical and floating. Common mode rejection is above 80 dB.



Photo of DAE


8.3 Phantom

<SAM Twin Phantom>

Shell Thickness	2 ± 0.2 mm; Center ear point: 6 ± 0.2 mm	
Filling Volume	Approx. 25 liters	
Dimensions	Length: 1000 mm; Width: 500 mm; Height: adjustable feet	
Measurement Areas	Left Hand, Right Hand, Flat Phantom	

The bottom plate contains three pair of bolts for locking the device holder. The device holder positions are adjusted to the standard measurement positions in the three sections. A white cover is provided to tap the phantom during off-periods to prevent water evaporation and changes in the liquid parameters. On the phantom top, three reference markers are provided to identify the phantom position with respect to the robot.

<ELI Phantom>

Shell Thickness	2 ± 0.2 mm (sagging: <1%)	
Filling Volume	Approx. 30 liters	
Dimensions	Major ellipse axis: 600 mm Minor axis: 400 mm	

The ELI phantom is intended for compliance testing of handheld and body-mounted wireless devices or for evaluating transmitters operating at low frequencies. ELI is fully compatible with standard and all known tissue simulating liquids.

8.4 Device Holder

<Mounting Device for Hand-Held Transmitter>

In combination with the Twin SAM V5.0/V5.0c or ELI phantoms, the Mounting Device for Hand-Held Transmitters enables rotation of the mounted transmitter device to specified spherical coordinates. At the heads, the rotation axis is at the ear opening. Transmitter devices can be easily and accurately positioned according to IEC 62209-1, IEEE 1528, FCC, or other specifications. The device holder can be locked for positioning at different phantom sections (left head, right head, flat). And upgrade kit to Mounting Device to enable easy mounting of wider devices like big smart-phones, e-books, small tablets, etc. It holds devices with width up to 140 mm.



Mounting Device for Hand-Held Transmitters



Mounting Device Adaptor for Wide-Phones

<Mounting Device for Laptops and other Body-Worn Transmitters>

The extension is lightweight and made of POM, acrylic glass and foam. It fits easily on the upper part of the mounting device in place of the phone positioned. The extension is fully compatible with the SAM Twin and ELI phantoms.



Mounting Device for Laptops

9. Measurement Procedures

The measurement procedures are as follows:

<Conducted power measurement>

- (a) For WWAN power measurement, use base station simulator to configure EUT WWAN transmission in conducted connection with RF cable, at maximum power in each supported wireless interface and frequency band.
- (b) Read the WWAN RF power level from the base station simulator.
- (c) For WLAN/BT power measurement, use engineering software to configure EUT WLAN/BT continuously transmission, at maximum RF power in each supported wireless interface and frequency band
- (d) Connect EUT RF port through RF cable to the power meter, and measure WLAN/BT output power

<SAR measurement>

- (a) Use base station simulator to configure EUT WWAN transmission in radiated connection, and engineering software to configure EUT WLAN/BT continuously transmission, at maximum RF power, in the highest power channel.
- (b) Place the EUT in the positions as Appendix D demonstrates.
- (c) Set scan area, grid size and other setting on the DASY software.
- (d) Measure SAR results for the highest power channel on each testing position.
- (e) Find out the largest SAR result on these testing positions of each band
- (f) Measure SAR results for other channels in worst SAR testing position if the reported SAR of highest power channel is larger than 0.8 W/kg

According to the test standard, the recommended procedure for assessing the peak spatial-average SAR value consists of the following steps:

- (a) Power reference measurement
- (b) Area scan
- (c) Zoom scan
- (d) Power drift measurement

9.1 Spatial Peak SAR Evaluation

The procedure for spatial peak SAR evaluation has been implemented according to the test standard. It can be conducted for 1g and 10g, as well as for user-specific masses. The DASY software includes all numerical procedures necessary to evaluate the spatial peak SAR value.

The base for the evaluation is a "cube" measurement. The measured volume must include the 1g and 10g cubes with the highest averaged SAR values. For that purpose, the center of the measured volume is aligned to the interpolated peak SAR value of a previously performed area scan.

The entire evaluation of the spatial peak values is performed within the post-processing engine (SEMCAD). The system always gives the maximum values for the 1g and 10g cubes. The algorithm to find the cube with highest averaged SAR is divided into the following stages:

- (a) Extraction of the measured data (grid and values) from the Zoom Scan
- (b) Calculation of the SAR value at every measurement point based on all stored data (A/D values and measurement parameters)
- (c) Generation of a high-resolution mesh within the measured volume
- (d) Interpolation of all measured values from the measurement grid to the high-resolution grid
- (e) Extrapolation of the entire 3-D field distribution to the phantom surface over the distance from sensor to surface
- (f) Calculation of the averaged SAR within masses of 1g and 10g

9.2 Power Reference Measurement

The Power Reference Measurement and Power Drift Measurements are for monitoring the power drift of the device under test in the batch process. The minimum distance of probe sensors to surface determines the closest measurement point to phantom surface. This distance cannot be smaller than the distance of sensor calibration points to probe tip as defined in the probe properties.

9.3 Area Scan

The area scan is used as a fast scan in two dimensions to find the area of high field values, before doing a fine measurement around the hot spot. The sophisticated interpolation routines implemented in DASY software can find the maximum found in the scanned area, within a range of the global maximum. The range (in dB0) is specified in the standards for compliance testing. For example, a 2 dB range is required in IEEE standard 1528 and IEC 62209 standards, whereby 3 dB is a requirement when compliance is assessed in accordance with the ARIB standard (Japan), if only one zoom scan follows the area scan, then only the absolute maximum will be taken as reference. For cases where multiple maximums are detected, the number of zoom scans has to be increased accordingly.

Area scan parameters extracted from FCC KDB 865664 D01v01r04 SAR measurement 100 MHz to 6 GHz.

	≤ 3 GHz	> 3 GHz
Maximum distance from closest measurement point (geometric center of probe sensors) to phantom surface	5 ± 1 mm	$\frac{1}{2} \cdot \delta \cdot \ln(2) \pm 0.5$ mm
Maximum probe angle from probe axis to phantom surface normal at the measurement location	$30^\circ \pm 1^\circ$	$20^\circ \pm 1^\circ$
Maximum area scan spatial resolution: $\Delta x_{\text{Area}}, \Delta y_{\text{Area}}$	≤ 2 GHz: ≤ 15 mm $2 - 3$ GHz: ≤ 12 mm	$3 - 4$ GHz: ≤ 12 mm $4 - 6$ GHz: ≤ 10 mm
	When the x or y dimension of the test device, in the measurement plane orientation, is smaller than the above, the measurement resolution must be \leq the corresponding x or y dimension of the test device with at least one measurement point on the test device.	

9.4 Zoom Scan

Zoom scans are used to assess the peak spatial SAR values within a cubic averaging volume containing 1 gram and 10 gram of simulated tissue. The zoom scan measures points (refer to table below) within a cube whose base faces are centered on the maxima found in a preceding area scan job within the same procedure. When the measurement is done, the zoom scan evaluates the averaged SAR for 1 gram and 10 gram and displays these values next to the job's label.

Zoom scan parameters extracted from FCC KDB 865664 D01v01r04 SAR measurement 100 MHz to 6 GHz.

			≤ 3 GHz	> 3 GHz
Maximum zoom scan spatial resolution: $\Delta x_{\text{Zoom}}, \Delta y_{\text{Zoom}}$			≤ 2 GHz: ≤ 8 mm 2 – 3 GHz: ≤ 5 mm*	3 – 4 GHz: ≤ 5 mm* 4 – 6 GHz: ≤ 4 mm*
Maximum zoom scan spatial resolution, normal to phantom surface	uniform grid: $\Delta z_{\text{Zoom}}(n)$		≤ 5 mm	3 – 4 GHz: ≤ 4 mm 4 – 5 GHz: ≤ 3 mm 5 – 6 GHz: ≤ 2 mm
	graded grid	$\Delta z_{\text{Zoom}}(1)$: between 1 st two points closest to phantom surface	≤ 4 mm	3 – 4 GHz: ≤ 3 mm 4 – 5 GHz: ≤ 2.5 mm 5 – 6 GHz: ≤ 2 mm
		$\Delta z_{\text{Zoom}}(n>1)$: between subsequent points	$\leq 1.5 \cdot \Delta z_{\text{Zoom}}(n-1)$	
Minimum zoom scan volume	x, y, z		≥ 30 mm	3 – 4 GHz: ≥ 28 mm 4 – 5 GHz: ≥ 25 mm 5 – 6 GHz: ≥ 22 mm
Note: δ is the penetration depth of a plane-wave at normal incidence to the tissue medium; see draft standard IEEE P1528-2011 for details.				
* When zoom scan is required and the <u>reported</u> SAR from the <u>area scan based 1-g SAR estimation</u> procedures of KDB 447498 is ≤ 1.4 W/kg, ≤ 8 mm, ≤ 7 mm and ≤ 5 mm zoom scan resolution may be applied, respectively, for 2 GHz to 3 GHz, 3 GHz to 4 GHz and 4 GHz to 6 GHz.				

9.5 Volume Scan Procedures

The volume scan is used to assess overlapping SAR distributions for antennas transmitting in different frequency bands. It is equivalent to an oversized zoom scan used in standalone measurements. The measurement volume will be used to enclose all the simultaneous transmitting antennas. For antennas transmitting simultaneously in different frequency bands, the volume scan is measured separately in each frequency band. In order to sum correctly to compute the 1g aggregate SAR, the EUT remain in the same test position for all measurements and all volume scan use the same spatial resolution and grid spacing. When all volume scan were completed, the software, SEMCAD postprocessor can combine and subsequently superpose these measurement data to calculating the multiband SAR.

9.6 Power Drift Monitoring

All SAR testing is under the EUT install full charged battery and transmit maximum output power. In DASY measurement software, the power reference measurement and power drift measurement procedures are used for monitoring the power drift of EUT during SAR test. Both these procedures measure the field at a specified reference position before and after the SAR testing. The software will calculate the field difference in dB. If the power drifts more than 5%, the SAR will be retested.

10. Test Equipment List

Manufacturer	Name of Equipment	Type/Model	Serial Number	Calibration	
				Last Cal.	Due Date
SPEAG	835MHz System Validation Kit	D835V2	4d162	Dec. 17, 2021	Dec. 16, 2024
SPEAG	2450MHz System Validation Kit	D2450V2	924	Sep. 02, 2020	Aug. 31, 2023
SPEAG	2600MHz System Validation Kit	D2600V2	1070	Dec. 20, 2021	Dec. 19, 2024
SPEAG	5000MHz System Validation Kit	D5GHzV2	1341	Dec. 13, 2021	Dec. 12, 2024
SPEAG	Data Acquisition Electronics	DAE4	679	Jun. 06, 2022	Jun. 05, 2023
SPEAG	Data Acquisition Electronics	DAE4	1437	Nov. 23, 2022	Nov. 22, 2023
SPEAG	Dosimetric E-Field Probe	ES3DV3	3191	Feb. 27, 2023	Feb. 26, 2024
SPEAG	Dosimetric E-Field Probe	EX3DV4	3819	May 30, 2022	May 29, 2023
SPEAG	SAM Twin Phantom	QD 000 P40 CD	1795	NCR	NCR
SPEAG	SAM Twin Phantom	QD 000 P40 CB	TP-1500	NCR	NCR
SPEAG	Phone Positioner	N/A	N/A	NCR	NCR
Anritsu	Radio communication analyzer	MT8820C	6201563813	Dec. 27, 2022	Dec. 26, 2023
Anritsu	Radio communication analyzer	MT8821C	6262314715	Jun. 27, 2022	Jun. 26, 2023
Agilent	Wireless Communication Test Set	E5515C	MY50267224	Jul. 07, 2022	Jul. 06, 2023
Keysight	Network Analyzer	E5071C	MY46523671	Oct. 17, 2022	Oct. 16, 2023
Speag	Dielectric Assessment KIT	DAK-3.5	1071	Feb. 20, 2023	Feb. 19, 2024
Agilent	Signal Generator	N5181A	MY50145381	Dec. 27, 2022	Dec. 26, 2023
Anritsu	Power Sensor	MA2411B	1306099	Oct. 17, 2022	Oct. 16, 2023
Anritsu	Power Meter	ML2495A	1349001	Oct. 17, 2022	Oct. 16, 2023
Anritsu	Power Sensor	MA2411B	1542004	Dec. 27, 2022	Dec. 26, 2023
Anritsu	Power Meter	ML2495A	1339473	Dec. 27, 2022	Dec. 26, 2023
R&S	CBT BLUETOOTH TESTER	CBT	100963	Dec. 27, 2022	Dec. 26, 2023
R&S	Spectrum Analyzer	FSP7	100818	Jul. 07, 2022	Jul. 06, 2023
TES	Hygrometer	1310	200505600	Jul. 12, 2022	Jul. 11, 2023
Anymetre	Thermo-Hygrometer	JR593	2015030904	Jul. 12, 2022	Jul. 11, 2023
Anymetre	Thermo-Hygrometer	JR593	2015030903	Dec. 30, 2022	Dec. 29, 2023
SPEAG	Device Holder	N/A	N/A	N/A	N/A
AR	Amplifier	5S1G4	0333096	Note 1	
Mini-Circuits	Amplifier	ZVE-3W-83+	599201528	Note 1	
ARRA	Power Divider	A3200-2	N/A	Note 1	
ET Industries	Dual Directional Coupler	C-058-10	N/A	Note 1	
Weinschel	Attenuator 1	3M-10	N/A	Note 1	
Weinschel	Attenuator 2	3M-20	N/A	Note 1	

Note:

1. Prior to system verification and validation, the path loss from the signal generator to the system check source and the power meter, which includes the amplifier, cable, attenuator and directional coupler, was measured by the network analyzer. The reading of the power meter was offset by the path loss difference between the path to the power meter and the path to the system check source to monitor the actual power level fed to the system check.
2. Referring to KDB 865664 D01v01r04, the dipole calibration interval can be extended to 3 years with justification. The dipoles are also not physically damaged, or repaired during the interval.
3. The justification data of dipole can be found in appendix C. The return loss is < -20dB, within 20% of prior calibration, the impedance is within 5 ohm of prior calibration.

11. System Verification

11.1 Tissue Simulating Liquids

For the measurement of the field distribution inside the SAM phantom with DASY, the phantom must be filled with around 25 liters of homogeneous body tissue simulating liquid. For head SAR testing, the liquid height from the ear reference point (ERP) of the phantom to the liquid top surface is larger than 15 cm, which is shown in Fig. 11.1. For body SAR testing, the liquid height from the center of the flat phantom to the liquid top surface is larger than 15 cm, which is shown in Fig. 11.2.



Fig 11.1 Photo of Liquid Height for Head SAR

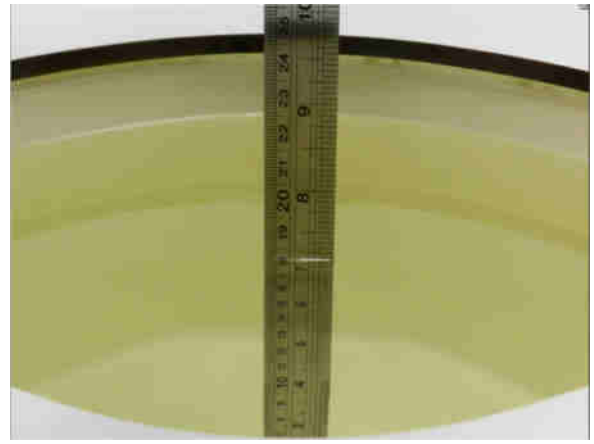


Fig 11.2 Photo of Liquid Height for Body SAR

11.2 Tissue Verification

The following tissue formulations are provided for reference only as some of the parameters have not been thoroughly verified. The composition of ingredients may be modified accordingly to achieve the desired target tissue parameters required for routine SAR evaluation.

Frequency (MHz)	Water (%)	Sugar (%)	Cellulose (%)	Salt (%)	Preventol (%)	DGBE (%)	Conductivity (σ)	Permittivity (ϵ_r)
For Head								
835	40.3	57.9	0.2	1.4	0.2	0	0.90	41.5
2450	55.0	0	0	0	0	45.0	1.80	39.2
2600	54.8	0	0	0.1	0	45.1	1.96	39.0

Simulating Liquid for 5GHz, Manufactured by SPEAG

Ingredients	(% by weight)
Water	64~78%
Mineral oil	11~18%
Emulsifiers	9~15%
Additives and Salt	2~3%

<Tissue Dielectric Parameter Check Results>

Frequency (MHz)	Tissue Type	Liquid Temp. (°C)	Conductivity (σ)	Permittivity (ϵ_r)	Conductivity Target (σ)	Permittivity Target (ϵ_r)	Delta (σ) (%)	Delta (ϵ_r) (%)	Limit (%)	Date
835	Head	22.3	0.902	40.749	0.90	41.50	0.22	-1.81	±5	2023/5/10
835	Head	22.1	0.925	42.207	0.90	41.50	2.78	1.70	±5	2023/5/18
2450	Head	22.4	1.848	40.369	1.80	39.20	2.67	2.98	±5	2023/5/12
2450	Head	22.2	1.777	38.698	1.80	39.20	-1.28	-1.28	±5	2023/5/21
2600	Head	22.5	2.039	37.491	1.96	39.00	4.03	-3.87	±5	2023/5/11
2600	Head	22.3	1.971	38.233	1.96	39.00	0.56	-1.97	±5	2023/5/20
5250	Head	22.7	4.714	36.412	4.71	35.95	0.08	1.29	±5	2023/5/14
5250	Head	22.6	4.668	36.857	4.71	35.95	-0.89	2.52	±5	2023/5/23
5600	Head	22.3	5.141	35.813	5.07	35.50	1.40	0.88	±5	2023/5/15
5600	Head	22.3	5.036	36.344	5.07	35.50	-0.67	2.38	±5	2023/5/24
5750	Head	22.6	5.315	35.552	5.22	35.35	1.82	0.57	±5	2023/5/16
5750	Head	22.5	5.196	36.137	5.22	35.35	-0.46	2.23	±5	2023/5/25

11.3 System Performance Check Results

Comparing to the original SAR value provided by SPEAG, the verification data should be within its specification of 10 %. Below table shows the target SAR and measured SAR after normalized to 1W input power. The table below indicates the system performance check can meet the variation criterion and the plots can be referred to Appendix A of this report.

<1g SAR>

Date	Frequency (MHz)	Tissue Type	Input Power (mW)	Dipole S/N	Probe S/N	DAE S/N	Measured 1g SAR (W/kg)	Targeted 1g SAR (W/kg)	Normalized 1g SAR (W/kg)	Deviation (%)
2023/5/10	835	Head	250	4d162	3819	1437	2.530	9.640	10.12	4.98
2023/5/18	835	Head	250	4d162	3191	679	2.400	9.640	9.60	-0.41
2023/5/12	2450	Head	250	924	3819	1437	14.000	51.400	56.00	8.95
2023/5/21	2450	Head	250	924	3191	679	13.900	51.400	55.60	8.17
2023/5/11	2600	Head	250	1070	3819	1437	15.200	56.200	60.80	8.19
2023/5/20	2600	Head	250	1070	3191	679	14.600	56.200	58.40	3.91
2023/5/14	5250	Head	100	1341	3819	1437	8.770	80.700	87.70	8.67
2023/5/23	5250	Head	100	1341	3819	1437	8.400	80.700	84.00	4.09
2023/5/15	5600	Head	100	1341	3819	1437	8.860	84.500	88.60	4.85
2023/5/24	5600	Head	100	1341	3819	1437	9.100	84.500	91.00	7.69
2023/5/16	5750	Head	100	1341	3819	1437	8.700	80.600	87.00	7.94
2023/5/25	5750	Head	100	1341	3819	1437	8.500	80.600	85.00	5.46

<10g SAR>

Date	Frequency (MHz)	Tissue Type	Input Power (mW)	Dipole S/N	Probe S/N	DAE S/N	Measured 10g SAR (W/kg)	Targeted 10g SAR (W/kg)	Normalized 10g SAR (W/kg)	Deviation (%)
2023/5/10	835	Head	250	4d162	3819	1437	1.67	6.26	6.68	6.71
2023/5/18	835	Head	250	4d162	3191	679	1.58	6.26	6.32	0.96
2023/5/12	2450	Head	250	924	3819	1437	6.53	24.00	26.12	8.83
2023/5/21	2450	Head	250	924	3191	679	6.48	24.00	25.92	8.00
2023/5/11	2600	Head	250	1070	3819	1437	6.67	24.60	26.68	8.46
2023/5/20	2600	Head	250	1070	3191	679	6.56	24.60	26.24	6.67
2023/5/14	5250	Head	100	1341	3819	1437	2.47	23.10	24.70	6.93
2023/5/23	5250	Head	100	1341	3819	1437	2.47	23.10	24.70	6.93
2023/5/15	5600	Head	100	1341	3819	1437	2.58	24.00	25.80	7.50
2023/5/24	5600	Head	100	1341	3819	1437	2.61	24.00	26.10	8.75
2023/5/16	5750	Head	100	1341	3819	1437	2.45	22.70	24.50	7.93
2023/5/25	5750	Head	100	1341	3819	1437	2.46	22.70	24.60	8.37

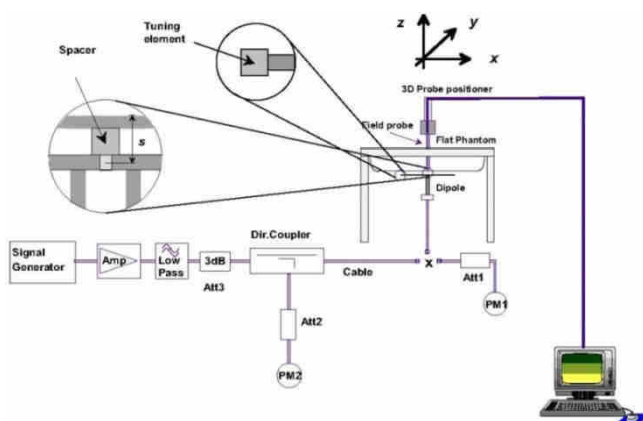


Fig 11.3.1 System Performance Check Setup



Fig 11.3.2 Setup Photo

12. RF Exposure Positions

12.1 Ear and handset reference point

Figure 12.1.1 shows the front, back, and side views of the SAM phantom. The center-of-mouth reference point is labeled "M," the left ear reference point (ERP) is marked "LE," and the right ERP is marked "RE." Each ERP is 15 mm along the B-M (back-mouth) line behind the entrance-to-ear-canal (EEC) point, as shown in Figure 12.1.2 The Reference Plane is defined as passing through the two ear reference points and point M. The line N-F (neck-front), also called the reference pivoting line, is normal to the Reference Plane and perpendicular to both a line passing through RE and LE and the B-M line (see Figure 12.1.3). Both N-F and B-M lines should be marked on the exterior of the phantom shell to facilitate handset positioning. Posterior to the N-F line the ear shape is a flat surface with 6 mm thickness at each ERP, and forward of the N-F line the ear is truncated, as illustrated in Figure 12.1.2. The ear truncation is introduced to preclude the ear lobe from interfering with handset tilt, which could lead to unstable positioning at the cheek.

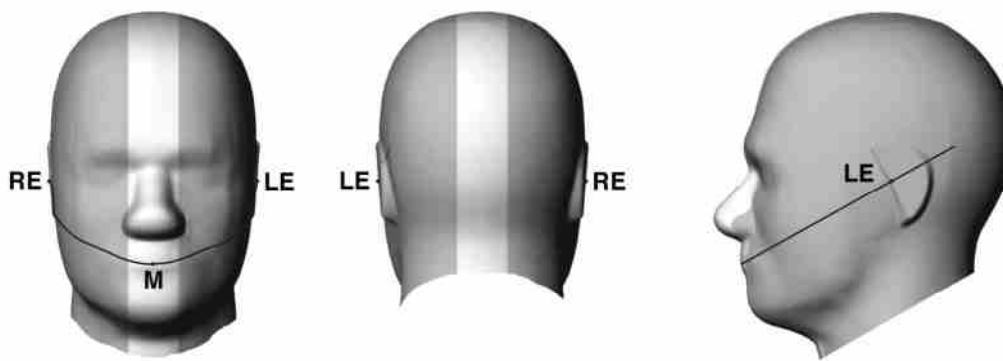


Fig 12.1.1 Front, back, and side views of SAM twin phantom

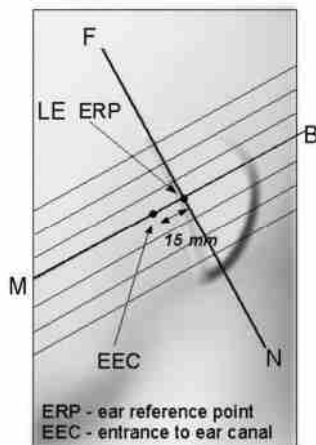


Fig 12.1.2 Close-up side view of phantom showing the ear region.

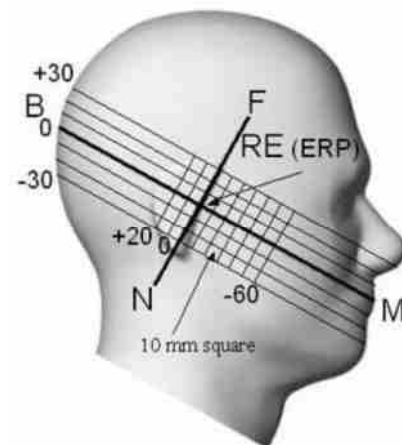


Fig 12.1.3 Side view of the phantom showing relevant markings and seven cross-sectional plane locations

12.2 Definition of the cheek position

1. Ready the handset for talk operation, if necessary. For example, for handsets with a cover piece (flip cover), open the cover. If the handset can transmit with the cover closed, both configurations must be tested.
2. Define two imaginary lines on the handset—the vertical centerline and the horizontal line. The vertical centerline passes through two points on the front side of the handset—the midpoint of the width w_t of the handset at the level of the acoustic output (point A in Figure 12.2.1 and Figure 12.2.2), and the midpoint of the width w_b of the bottom of the handset (point B). The horizontal line is perpendicular to the vertical centerline and passes through the center of the acoustic output (see Figure 12.2.1). The two lines intersect at point A. Note that for many handsets, point A coincides with the center of the acoustic output; however, the acoustic output may be located elsewhere on the handset. Also note that the vertical centerline is not necessarily parallel to the front face of the handset (see Figure 12.2.2), especially for clamshell handsets, handsets with flip covers, and other irregularly-shaped handsets.
3. Position the handset close to the surface of the phantom such that point A is on the (virtual) extension of the line passing through points RE and LE on the phantom (see Figure 12.2.3), such that the plane defined by the vertical centerline and the horizontal line of the handset is approximately parallel to the sagittal plane of the phantom.
4. Translate the handset towards the phantom along the line passing through RE and LE until handset point A touches the pinna at the ERP.
5. While maintaining the handset in this plane, rotate it around the LE-RE line until the vertical centerline is in the plane normal to the plane containing B-M and N-F lines, i.e., the Reference Plane.
6. Rotate the handset around the vertical centerline until the handset (horizontal line) is parallel to the N-F line.
7. While maintaining the vertical centerline in the Reference Plane, keeping point A on the line passing through RE and LE, and maintaining the handset contact with the pinna, rotate the handset about the N-F line until any point on the handset is in contact with a phantom point below the pinna on the cheek. See Figure 12.2.3. The actual rotation angles should be documented in the test report.

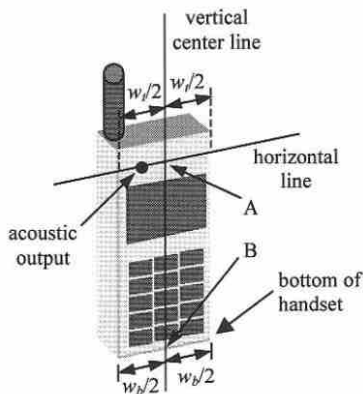


Fig 12.2.1 Handset vertical and horizontal reference lines—"fixed case"

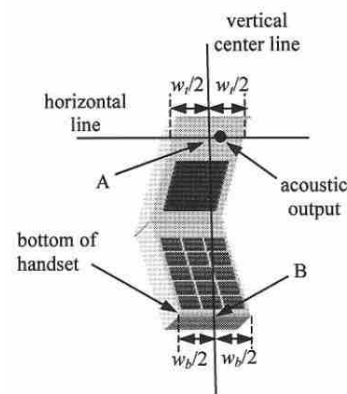


Fig 12.2.2 Handset vertical and horizontal reference lines—"clam-shell case"

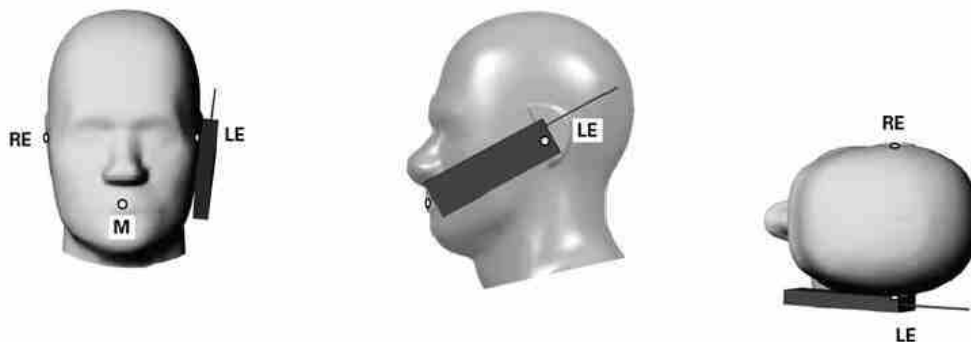


Fig 12.2.3 cheek or touch position. The reference points for the right ear (RE), left ear (LE), and mouth (M), which establish the Reference Plane for handset positioning, are indicated.

12.3 Definition of the tilt position

1. Ready the handset for talk operation, if necessary. For example, for handsets with a cover piece (flip cover), open the cover. If the handset can transmit with the cover closed, both configurations must be tested.
2. While maintaining the orientation of the handset, move the handset away from the pinna along the line passing through RE and LE far enough to allow a rotation of the handset away from the cheek by 15°.
3. Rotate the handset around the horizontal line by 15°.
4. While maintaining the orientation of the handset, move the handset towards the phantom on the line passing through RE and LE until any part of the handset touches the ear. The tilt position is obtained when the contact point is on the pinna. See Figure 12.3.1. If contact occurs at any location other than the pinna, e.g., the antenna at the back of the phantom head, the angle of the handset should be reduced. In this case, the tilt position is obtained if any point on the handset is in contact with the pinna and a second point

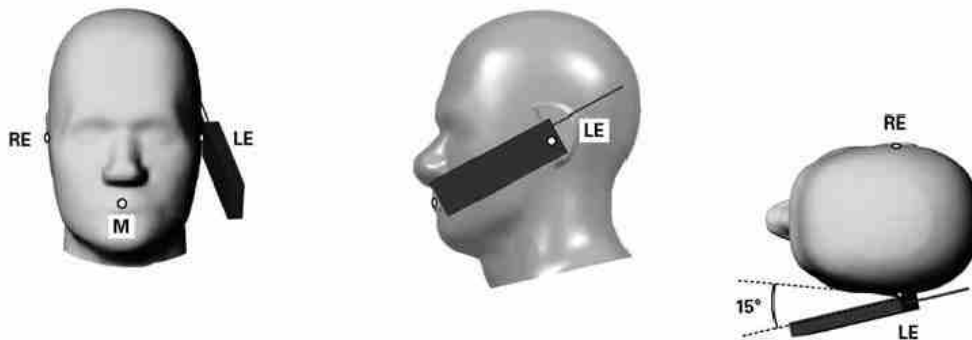


Fig 12.3.1 Tilt position. The reference points for the right ear (RE), left ear (LE), and mouth (M), which define the Reference Plane for handset positioning, are indicated.

12.4 Body Worn Accessory

Body-worn operating configurations are tested with the belt-clips and holsters attached to the device and positioned against a flat phantom in a normal use configuration (see Figure 12.4). Per KDB648474 D04v01r03, body-worn accessory exposure is typically related to voice mode operations when handsets are carried in body-worn accessories. The body-worn accessory procedures in FCC KDB 447498 D01v06 should be used to test for body-worn accessory SAR compliance, without a headset connected to it. This enables the test results for such configuration to be compatible with that required for hotspot mode when the body-worn accessory test separation distance is greater than or equal to that required for hotspot mode, when applicable. When the reported SAR for body-worn accessory, measured without a headset connected to the handset is $> 1.2 \text{ W/kg}$, the highest reported SAR configuration for that wireless mode and frequency band should be repeated for that body-worn accessory with a headset attached to the handset.

Accessories for body-worn operation configurations are divided into two categories: those that do not contain metallic components and those that do contain metallic components. When multiple accessories that do not contain metallic components are supplied with the device, the device is tested with only the accessory that dictates the closest spacing to the body. Then multiple accessories that contain metallic components are test with the device with each accessory. If multiple accessories share an identical metallic component (i.e. the same metallic belt-clip used with different holsters with no other metallic components) only the accessory that dictates the closest spacing to the body is tested.

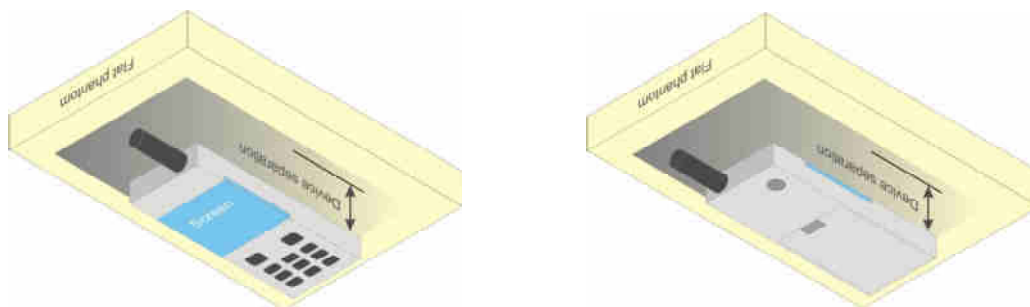


Fig 12.4 Body Worn Position

12.5 Product Specific 10g SAR Exposure

For smart phones with a display diagonal dimension > 15.0 cm or an overall diagonal dimension > 16.0 cm, that can provide similar mobile web access and multimedia support found in mini-tablets or UMPC mini-tablets and support voice calls next to the ear, According to KDB648474 D04v01r03, the following phablet procedures should be applied to evaluate SAR compliance for each applicable wireless modes and frequency band. Devices marketed as phablets, regardless of form factors and operating characteristics must be tested as a phablet to determine SAR compliance

1. The normally required head and body-worn accessory SAR test procedures for handsets, including hotspot mode, must be applied.
2. The UMPC mini-tablet procedures must also be applied to test the SAR of all surfaces and edges with an antenna located at ≤ 25 mm from that surface or edge, in direct contact with a flat phantom, for 10-g extremity SAR according to the body-equivalent tissue dielectric parameters in KDB 865664 to address interactive hand use exposure conditions.⁶ The UMPC mini-tablet 1-g SAR at 5 mm is not required. When hotspot mode applies, 10-g extremity SAR is required only for the surfaces and edges with hotspot mode 1-g reported SAR > 1.2 W/kg.

12.6 Wireless Router

Some battery-operated handsets have the capability to transmit and receive user through simultaneous transmission of WIFI simultaneously with a separate licensed transmitter. The FCC has provided guidance in FCC KDB Publication 941225 D06 v02r01 where SAR test considerations for handsets ($L \times W \geq 9$ cm x 5 cm) are based on a composite test separation distance of 10mm from the front, back and edges of the device containing transmitting antennas within 2.5cm of their edges, determined from general mixed use conditions for this type of devices. Since the hotspot SAR results may overlap with the body-worn accessory SAR requirements, the more conservative configurations can be considered, thus excluding some body-worn accessory SAR tests.

When the user enables the personal wireless router functions for the handset, actual operations include simultaneous transmission of both the WIFI transmitter and another licensed transmitter. Both transmitters often do not transmit at the same transmitting frequency and thus cannot be evaluated for SAR under actual use conditions due to the limitations of the SAR assessment probes. Therefore, SAR must be evaluated for each frequency transmission and mode separately and spatially summed with the WIFI transmitter according to FCC KDB Publication 447498 D01v06 publication procedures. The "Portable Hotspot" feature on the handset was NOT activated during SAR assessments, to ensure the SAR measurements were evaluated for a single transmission frequency RF signal at a time.

13. Conducted RF Output Power (Unit: dBm)

The detailed conducted power table can refer to Appendix E.

<GSM Conducted Power>

1. Per KDB 447498 D01v06, the maximum output power channel is used for SAR testing and for further SAR test reduction.
2. Per KDB 941225 D01v03r01, for SAR test reduction for GSM / GPRS / EDGE modes is determined by the source-based time-averaged output power including tune-up tolerance. The mode with highest specified time-averaged output power should be tested for SAR compliance in the applicable exposure conditions. For modes with the same specified maximum output power and tolerance, the higher number time-slot configuration should be tested.
3. Other configurations of GSM / GPRS / EDGE are considered as secondary modes. The 3G SAR test reduction procedure is applied, when the maximum output power and tune-up tolerance specified for production units in a secondary mode is $\leq \frac{1}{4}$ dB higher than the primary mode, SAR measurement is not required for the secondary mode.

<WCDMA Conducted Power>

1. The following tests were conducted according to the test requirements outlines in 3GPP TS 34.121 specification.
2. The procedures in KDB 941225 D01v03r01 are applied for 3GPP Rel. 6 HSPA to configure the device in the required sub-test mode(s) to determine SAR test exclusion.
3. For DC-HSDPA, the device was configured according to the H-Set 12, Fixed Reference Channel (FRC) configuration in Table C.8.1.12 of 3GPP TS 34.121-1, with the primary and the secondary serving HS-DSCH Cell enabled during the power measurement.

A summary of these settings are illustrated below:

HSDPA Setup Configuration:

- a. The EUT was connected to Base Station Agilent E5515C referred to the Setup Configuration.
- b. The RF path losses were compensated into the measurements.
- c. A call was established between EUT and Base Station with following setting:
 - i. Set Gain Factors (β_c and β_d) and parameters were set according to each
 - ii. Specific sub-test in the following table, C10.1.4, quoted from the TS 34.121
 - iii. Set RMC 12.2Kbps + HSDPA mode.
 - iv. Set Cell Power = -86 dBm
 - v. Set HS-DSCH Configuration Type to FRC (H-set 1, QPSK)
 - vi. Select HSDPA Uplink Parameters
 - vii. Set Delta ACK, Delta NACK and Delta CQI = 8
 - viii. Set Ack-Nack Repetition Factor to 3
 - ix. Set CQI Feedback Cycle (k) to 4 ms
 - x. Set CQI Repetition Factor to 2
 - xi. Power Ctrl Mode = All Up bits
- d. The transmitted maximum output power was recorded.

Table C.10.1.4: β values for transmitter characteristics tests with HS-DPCCH

Sub-test	β_c	β_d	β_d (SF)	β_o/β_d	β_{HS} (Note 1, Note 2)	CM (dB) (Note 3)	MPR (dB) (Note 3)
1	2/15	15/15	64	2/15	4/15	0.0	0.0
2	12/15 (Note 4)	15/15 (Note 4)	64	12/15 (Note 4)	24/15	1.0	0.0
3	15/15	8/15	64	15/8	30/15	1.5	0.5
4	15/15	4/15	64	15/4	30/15	1.5	0.5
<p>Note 1: Δ_{ACK}, Δ_{NACK} and $\Delta_{CQI} = 30/15$ with $\beta_{HS} = 30/15 * \beta_c$.</p> <p>Note 2: For the HS-DPCCH power mask requirement test in clause 5.2C, 5.7A, and the Error Vector Magnitude (EVM) with HS-DPCCH test in clause 5.13.1A, and HSDPA EVM with phase discontinuity in clause 5.13.1AA, Δ_{ACK} and $\Delta_{NACK} = 30/15$ with $\beta_{HS} = 30/15 * \beta_c$, and $\Delta_{CQI} = 24/15$ with $\beta_{HS} = 24/15 * \beta_c$.</p> <p>Note 3: CM = 1 for $\beta_o/\beta_d = 12/15$, $\beta_{HS}/\beta_c = 24/15$. For all other combinations of DPDCH, DPCCH and HS-DPCCH the MPR is based on the relative CM difference. This is applicable for only UEs that support HSDPA in release 6 and later releases.</p> <p>Note 4: For subtest 2 the β_o/β_d ratio of 12/15 for the TFC during the measurement period (TF1, TF0) is achieved by setting the signalled gain factors for the reference TFC (TF1, TF1) to $\beta_c = 11/15$ and $\beta_d = 15/15$.</p>							

Setup Configuration

HSUPA Setup Configuration:

- a. The EUT was connected to Base Station Agilent E5515C referred to the Setup Configuration.
- b. The RF path losses were compensated into the measurements.
- c. A call was established between EUT and Base Station with following setting * :
 - i. Call Configs = 5.2B, 5.9B, 5.10B, and 5.13.2B with QPSK
 - ii. Set the Gain Factors (β_c and β_d) and parameters (AG Index) were set according to each specific sub-test in the following table, C11.1.3, quoted from the TS 34.121
 - iii. Set Cell Power = -86 dBm
 - iv. Set Channel Type = 12.2k + HSPA
 - v. Set UE Target Power
 - vi. Power Ctrl Mode= Alternating bits
 - vii. Set and observe the E-TFCI
 - viii. Confirm that E-TFCI is equal to the target E-TFCI of 75 for sub-test 1, and other subtest's E-TFCI
- d. The transmitted maximum output power was recorded.

Table C.11.1.3: β values for transmitter characteristics tests with HS-DPCCH and E-DCH

Sub-test	β_c	β_d	β_d (SF)	β_c/β_d	β_{HS} (Note 1)	β_{EC}	β_{ed} (Note 4) (Note 5)	β_{ed} (SF)	β_{ed} (Codes)	CM (dB) (Note 2)	MPR (dB) (Note 2) (Note 6)	AG Index (Note 5)	E-TFCI
1	11/15 (Note 3)	15/15 (Note 3)	64	11/15 (Note 3)	22/15	209/25	1309/225	4	1	1.0	0.0	20	75
2	6/15	15/15	64	6/15	12/15	12/15	94/75	4	1	3.0	2.0	12	67
3	15/15	9/15	64	15/9	30/15	30/15	β_{ed1} : 47/15 β_{ed2} : 47/15	4	2	2.0	1.0	15	92
4	2/15	15/15	64	2/15	4/15	2/15	56/75	4	1	3.0	2.0	17	71
5	15/15	0	-	-	5/15	5/15	47/15	4	1	1.0	0.0	12	67

Note 1: For sub-test 1 to 4, Δ_{ACK} , Δ_{NACK} and $\Delta_{CDI} = 30/15$ with $\beta_{HS} = 30/15 * \beta_c$. For sub-test 5, Δ_{ACK} , Δ_{NACK} and $\Delta_{CDI} = 5/15$ with $\beta_{HS} = 5/15 * \beta_c$.

Note 2: CM = 1 for $\beta_c/\beta_d = 12/15$, $\beta_{HS}/\beta_c = 24/15$. For all other combinations of DPDCH, DPCCH, HS-DPCCH, E-DPDCH and E-DPCCH the MPR is based on the relative CM difference.

Note 3: For subtest 1 the β_c/β_d ratio of 11/15 for the TFC during the measurement period (TF1, TF0) is achieved by setting the signalled gain factors for the reference TFC (TF1, TF0) to $\beta_c = 10/15$ and $\beta_d = 15/15$.

Note 4: In case of testing by UE using E-DPDCH Physical Layer category 1, Sub-test 3 is omitted according to TS25.306 Table 5.1g.

Note 5: β_{ed} can not be set directly; it is set by Absolute Grant Value.

Note 6: For subtests 2, 3 and 4, UE may perform E-DPDCH power scaling at max power which could results in slightly smaller MPR values.

Setup Configuration

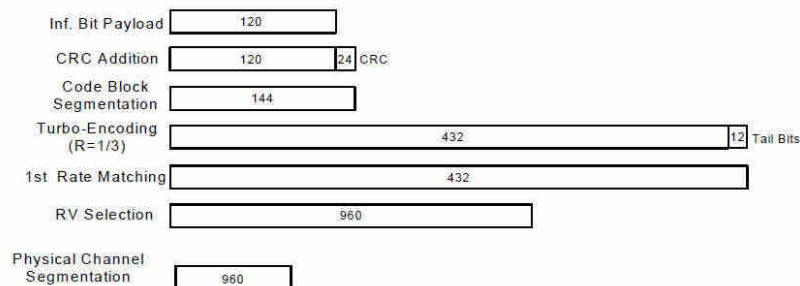
DC-HSDPA 3GPP release 8 Setup Configuration:

- a. The EUT was connected to Base Station referred to the Setup Configuration below
- b. The RF path losses were compensated into the measurements.
- c. A call was established between EUT and Base Station with following setting:
 - i. Set RMC 12.2Kbps + HSDPA mode.
 - ii. Set Cell Power = -25 dBm
 - iii. Set HS-DSCH Configuration Type to FRC (H-set 12, QPSK)
 - iv. Select HSDPA Uplink Parameters
 - v. Set Gain Factors (β_c and β_d) and parameters were set according to each Specific sub-test in the following table, C10.1.4, quoted from the TS 34.121
 - a). Subtest 1: $\beta_c/\beta_d=2/15$
 - b). Subtest 2: $\beta_c/\beta_d=12/15$
 - c). Subtest 3: $\beta_c/\beta_d=15/8$
 - d). Subtest 4: $\beta_c/\beta_d=15/4$
 - vi. Set Delta ACK, Delta NACK and Delta CQI = 8
 - vii. Set Ack-Nack Repetition Factor to 3
 - viii. Set CQI Feedback Cycle (k) to 4 ms
 - ix. Set CQI Repetition Factor to 2
 - x. Power Ctrl Mode = All Up bits
- d. The transmitted maximum output power was recorded.

The following tests were conducted according to the test requirements outlines in 3GPP TS 34.121 specification. A summary of these settings are illustrated below:

C.8.1.12 Fixed Reference Channel Definition H-Set 12
Table C.8.1.12: Fixed Reference Channel H-Set 12

Parameter	Unit	Value
Nominal Avg. Inf. Bit Rate	kbps	60
Inter-TTI Distance	TTI's	1
Number of HARQ Processes	Processes	6
Information Bit Payload (N_{INF})	Bits	120
Number Code Blocks	Blocks	1
Binary Channel Bits Per TTI	Bits	960
Total Available SML's in UE	SML's	19200
Number of SML's per HARQ Proc.	SML's	3200
Coding Rate		0.15
Number of Physical Channel Codes	Codes	1
Modulation		QPSK
Note 1: The RMC is intended to be used for DC-HSDPA mode and both cells shall transmit with identical parameters as listed in the table.		
Note 2: Maximum number of transmission is limited to 1, i.e., retransmission is not allowed. The redundancy and constellation version 0 shall be used.		


Figure C.8.19: Coding rate for Fixed reference Channel H-Set 12 (QPSK)
Setup Configuration

<WCDMA Conducted Power>

General Note:

1. Per KDB 941225 D01v03r01, for SAR testing is measured using a 12.2 kbps RMC with TPC bits configured to all "1's".
2. Per KDB 941225 D01v03r01, RMC 12.2kbps setting is used to evaluate SAR. The maximum output power and tune-up tolerance specified for production units in HSDPA / HSUPA / DC-HSDPA is $\leq \frac{1}{4}$ dB higher than RMC 12.2Kbps or when the highest reported SAR of the RMC12.2Kbps is scaled by the ratio of specified maximum output power and tune-up tolerance of HSDPA / HSUPA / DC-HSDPA to RMC12.2Kbps and the adjusted SAR is ≤ 1.2 W/kg, SAR measurement is not required for HSDPA / HSUPA / DC-HSDPA, and according to the following RF output power, the output power results of the secondary modes (HSDPA / HSUPA / DC-HSDPA) are less than $\frac{1}{4}$ dB higher than the primary modes; therefore, SAR measurement is not required for HSDPA / HSUPA / DC-HSDPA.

<LTE Conducted Power>

General Note:

1. Anritsu MT8820C base station simulator was used to setup the connection with EUT; the frequency band, channel bandwidth, RB allocation configuration, modulation type are set in the base station simulator to configure EUT transmitting at maximum power and at different configurations which are requested to be reported to FCC, for conducted power measurement and SAR testing.
2. Per KDB 941225 D05v02r05, when a properly configured base station simulator is used for the SAR and power measurements, spectrum plots for each RB allocation and offset configuration is not required.
3. Per KDB 941225 D05v02r05, start with the largest channel bandwidth and measure SAR for QPSK with 1 RB allocation, using the RB offset and required test channel combination with the highest maximum output power for RB offsets at the upper edge, middle and lower edge of each required test channel.
4. Per KDB 941225 D05v02r05, 50% RB allocation for QPSK SAR testing follows 1RB QPSK allocation procedure.
5. Per KDB 941225 D05v02r05, for QPSK with 100% RB allocation, SAR is not required when the highest maximum output power for 100 % RB allocation is less than the highest maximum output power in 50% and 1 RB allocations and the highest reported SAR for 1 RB and 50% RB allocation are ≤ 0.8 W/kg. Otherwise, SAR is measured for the highest output power channel; and if the reported SAR is > 1.45 W/kg, the remaining required test channels must also be tested.
6. Per KDB 941225 D05v02r05, 16QAM output power for each RB allocation configuration is $>$ not $\frac{1}{2}$ dB higher than the same configuration in QPSK and the reported SAR for the QPSK configuration is ≤ 1.45 W/kg; Per KDB 941225 D05v02r05, 16QAM SAR testing is not required.
7. Per KDB 941225 D05v02r05, smaller bandwidth output power for each RB allocation configuration is $>$ not $\frac{1}{2}$ dB higher than the same configuration in the largest supported bandwidth, and the reported SAR for the largest supported bandwidth is ≤ 1.45 W/kg; Per KDB 941225 D05v02r05, smaller bandwidth SAR testing is not required.
8. For LTE B5/B26/B38 the maximum bandwidth does not support three non-overlapping channels, per KDB 941225 D05v02r05, when a device supports overlapping channel assignment in a channel bandwidth configuration, the middle channel of the group of overlapping channels should be selected for testing.
9. LTE B5/B38 SAR test was covered by B26/B41; according to April 2015 TCB workshop, SAR test for overlapping LTE bands can be reduced if
 - a. the maximum output power, including tolerance, for the smaller band is \leq the larger band to qualify for the SAR test exclusion
 - b. the channel bandwidth and other operating parameters for the smaller band are fully supported by the larger band

<TDD LTE SAR Measurement>

TDD LTE configuration setup for SAR measurement

SAR was tested with a fixed periodic duty factor according to the highest transmission duty factor implemented for the device and supported by 3GPP.

- 3GPP TS 36.211 section 4.2 for Type 2 Frame Structure and Table 4.2-2 for uplink-downlink configurations
- "special subframe S" contains both uplink and downlink transmissions, it has been taken into consideration to determine the transmission duty factor according to the worst case uplink and downlink cyclic prefix requirements for UpPTS
- Establishing connections with base station simulators ensure a consistent means for testing SAR and recommended for evaluating SAR. The Anritsu MT8820C (firmware: #22.52#004) was used for LTE output power measurements and SAR testing.

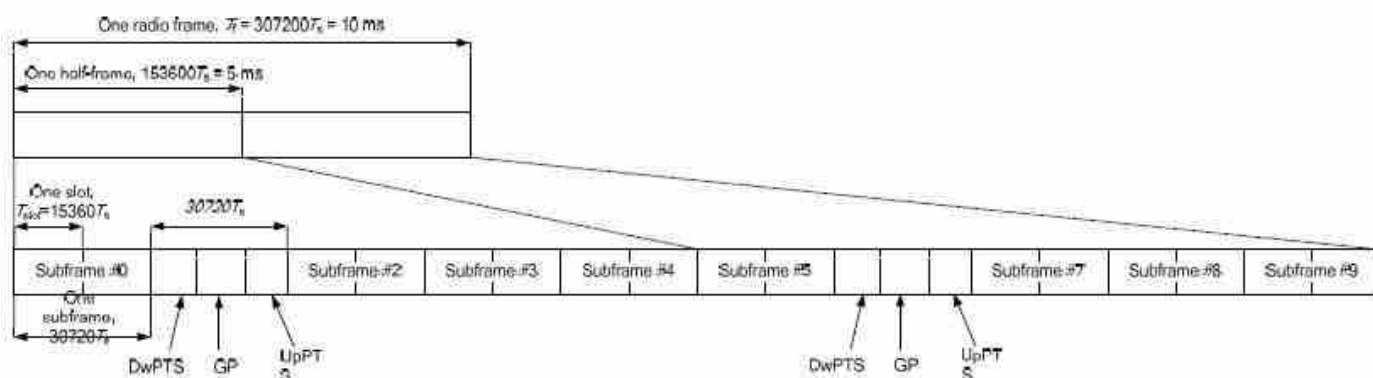


Figure 4.2-1: Frame structure type 2 (for 5 ms switch-point periodicity).

Table 4.2-2: Uplink-downlink configurations.

Uplink-downlink configuration	Downlink-to-Uplink Switch-point periodicity	Subframe number									
		0	1	2	3	4	5	6	7	8	9
0	5 ms	D	S	U	U	U	D	S	U	U	U
1	5 ms	D	S	U	U	D	D	S	U	U	D
2	5 ms	D	S	U	D	D	D	S	U	D	D
3	10 ms	D	S	U	U	U	D	D	D	D	D
4	10 ms	D	S	U	U	D	D	D	D	D	D
5	10 ms	D	S	U	D	D	D	D	D	D	D
6	5 ms	D	S	U	U	U	D	S	U	U	D

Table 4.2-1: Configuration of special subframe (lengths of DwPTS/GP/UpPTS).

Special subframe configuration	Normal cyclic prefix in downlink			Extended cyclic prefix in downlink		
	DwPTS	UpPTS		DwPTS	UpPTS	
		Normal cyclic prefix in uplink	Extended cyclic prefix in uplink		Normal cyclic prefix in uplink	Extended cyclic prefix in uplink
0	$6592 \cdot T_s$	$2192 \cdot T_s$	$2560 \cdot T_s$	$7680 \cdot T_s$	$2192 \cdot T_s$	$2560 \cdot T_s$
1	$19760 \cdot T_s$			$20480 \cdot T_s$		
2	$21952 \cdot T_s$			$23040 \cdot T_s$		
3	$24144 \cdot T_s$			$25600 \cdot T_s$		
4	$26336 \cdot T_s$	$4384 \cdot T_s$	$5120 \cdot T_s$	$7680 \cdot T_s$	$4384 \cdot T_s$	$5120 \cdot T_s$
5	$6592 \cdot T_s$			$20480 \cdot T_s$		
6	$19760 \cdot T_s$			$23040 \cdot T_s$		
7	$21952 \cdot T_s$			$12800 \cdot T_s$		
8	$24144 \cdot T_s$			-	-	-
9	$13168 \cdot T_s$			-	-	-

Special subframe (30720·T _s): Normal cyclic prefix in downlink (UpPTS)			
	Special subframe configuration	Normal cyclic prefix in uplink	Extended cyclic prefix in uplink
Uplink duty factor in one special subframe	0~4	7.13%	8.33%
	5~9	14.3%	16.7%

Special subframe(30720·T _s): Extended cyclic prefix in downlink (UpPTS)			
	Special subframe configuration	Normal cyclic prefix in uplink	Extended cyclic prefix in uplink
Uplink duty factor in one special subframe	0~3	7.13%	8.33%
	4~7	14.3%	16.7%

The highest duty factor is resulted from:

For LTE TDD Power class 3

- Uplink-downlink configuration: 0. In a half-frame consisted of 5 subframes, uplink operation is in 3 uplink subframes and 1 special subframe.
- special subframe configuration: 5-9 for normal cyclic prefix in downlink, 4-7 for extended cyclic prefix in downlink
- for special subframe with extended cyclic prefix in uplink, the total uplink duty factor in one half-frame is:
 $(3+0.167)/5 = 63.3\%$
- for special subframe with normal cyclic prefix in uplink, the total uplink duty factor in one half-frame is:
 $(3+0.143)/5 = 62.9\%$
- For TDD LTE SAR measurement, the duty cycle 1:1.59 (62.9 %) was used perform testing and considering the theoretical duty cycle of 63.3% for extended cyclic prefix in the uplink, and the theoretical duty cycle of 62.9% for normal cyclic prefix in uplink, a scaling factor of extended cyclic prefix $63.3\%/62.9\% = 1.006$ is applied to scale-up the measured SAR result. The scaled TDD LTE SAR = measured SAR (W/kg)* Tune-up Scaling Factor* scaling factor for extended cyclic prefix.

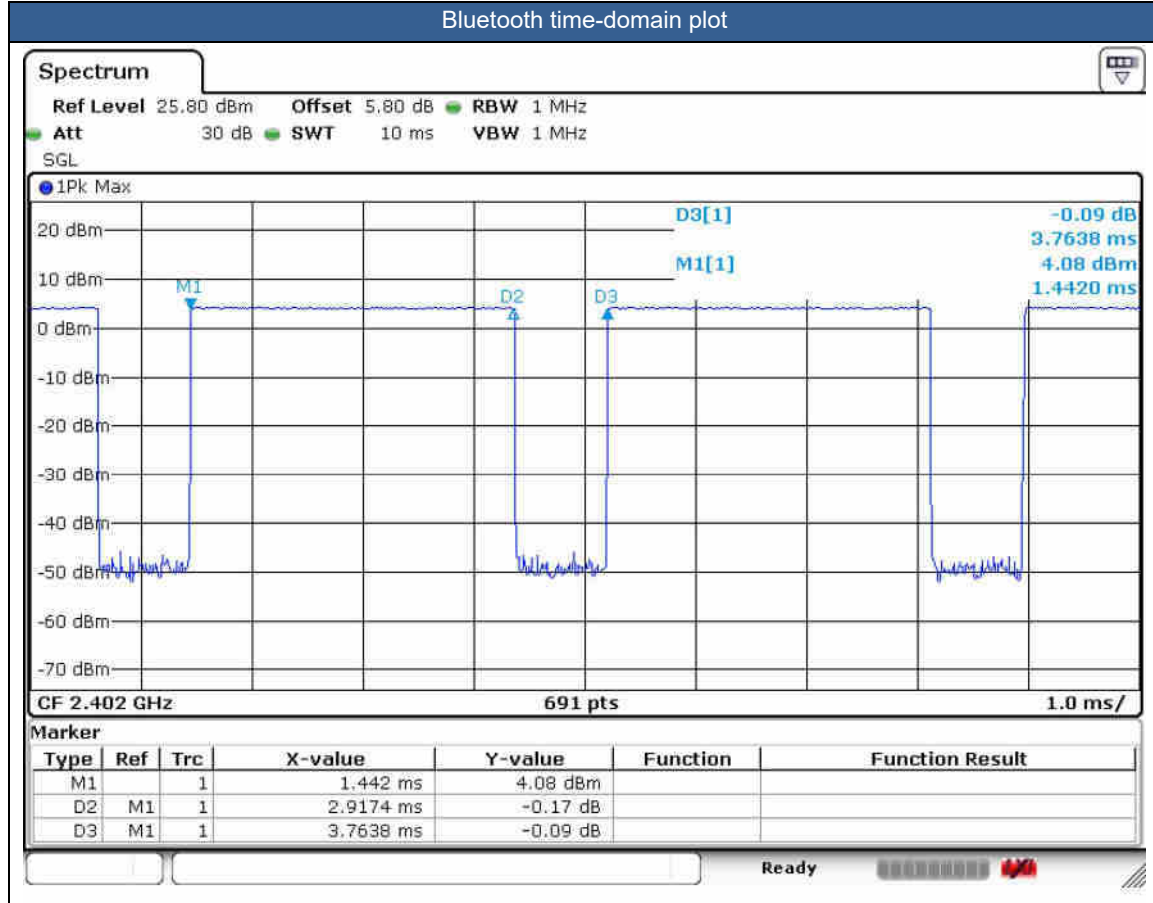
<WLAN Conducted Power>**General Note:**

1. The maximum output power specified for production units are determined for all applicable 802.11 transmission modes in each standalone and aggregated frequency band. Maximum output power is measured for the highest maximum output power configuration(s) in each frequency band according to the default power measurement procedures. For "Not required", SAR Test reduction was applied from KDB 248227 guidance, Sec. 2.1, b), 1) when the same maximum power is specified for multiple transmission modes in a frequency band, the largest channel bandwidth, lowest order modulation, lowest data rate and lowest order 802.11a/g/n/ac mode is used for SAR measurement, on the highest measured output power channel in the initial test configuration. Additional output power measurements were not necessary.
2. Per KDB 248227 D01v02r02, SAR test reduction is determined according to 802.11 transmission mode configurations and certain exposure conditions with multiple test positions. In the 2.4 GHz band, separate SAR procedures are applied to DSSS and OFDM configurations to simplify DSSS test requirements. For OFDM, in both 2.4 and 5 GHz bands, an initial test configuration must be determined for each standalone and aggregated frequency band, according to the transmission mode configuration with the highest maximum output power specified for production units to perform SAR measurements. If the same highest maximum output power applies to different combinations of channel bandwidths, modulations and data rates, additional procedures are applied to determine which test configurations require SAR measurement. When applicable, an initial test position may be applied to reduce the number of SAR measurements required for next to the ear, UMPC mini-tablet or hotspot mode configurations with multiple test positions.
3. For 2.4 GHz 802.11b DSSS, either the initial test position procedure for multiple exposure test positions or the DSSS procedure for fixed exposure position is applied; these are mutually exclusive. For 2.4 GHz and 5 GHz OFDM configurations, the initial test configuration is applied to measure SAR using either the initial test position procedure for multiple exposure test position configurations or the initial test configuration procedures for fixed exposure test conditions. Based on the reported SAR of the measured configurations and maximum output power of the transmission mode configurations that are not included in the initial test configuration, the subsequent test configuration and initial test position procedures are applied to determine if SAR measurements are required for the remaining OFDM transmission configurations. In general, the number of test channels that require SAR measurement is minimized based on maximum output power measured for the test sample(s).
4. For OFDM transmission configurations in the 2.4 GHz and 5 GHz bands, When the same maximum power is specified for multiple transmission modes in a frequency band, the largest channel bandwidth, lowest order modulation, lowest data rate and lowest order 802.11a/g/n/ac mode is used for SAR measurement, on the highest measured output power channel for each frequency band.
5. DSSS and OFDM configurations are considered separately according to the required SAR procedures. SAR is measured in the initial test position using the 802.11 transmission mode configuration required by the DSSS procedure or initial test configuration and subsequent test configuration(s) according to the OFDM procedures.18 The initial test position procedure is described in the following:
 - a. When the reported SAR of the initial test position is ≤ 0.4 W/kg, further SAR measurement is not required for the other test positions in that exposure configuration and 802.11 transmission mode combinations within the frequency band or aggregated band.
 - b. When the reported SAR of the test position is > 0.4 W/kg, SAR is repeated for the 802.11 transmission mode configuration tested in the initial test position to measure the subsequent next closet/smallest test separation distance and maximum coupling test position on the highest maximum output power channel, until the report SAR is ≤ 0.8 W/kg or all required test position are tested.
 - c. For all positions/configurations, when the reported SAR is > 0.8 W/kg, SAR is measured for these test positions/configurations on the subsequent next highest measured output power channel(s) until the reported SAR is ≤ 1.2 W/kg or all required channels are tested.

<2.4GHz Bluetooth>

General Note:

1. For 2.4GHz Bluetooth SAR testing was selected 1Mbps, due to its highest average power.
2. The Bluetooth duty cycle is 77.51% as following figure, for Bluetooth SAR scaling need further consideration and the theoretical duty cycle is 100%, therefore the actual duty cycle will be scaled up to 100% for Bluetooth reported SAR calculation.





14. Antenna Location

The detailed antenna location information can refer to SAR Test Setup Photos.

15. SAR Test Results

General Note:

1. Per KDB 447498 D01v06, the reported SAR is the measured SAR value adjusted for maximum tune-up tolerance.
 - a. Tune-up scaling Factor = tune-up limit power (mW) / EUT RF power (mW), where tune-up limit is the maximum rated power among all production units.
 - b. For SAR testing of WLAN/Bluetooth signal with non-100% duty cycle, the measured SAR is scaled-up by the duty cycle scaling factor which is equal to "1/(duty cycle)"
 - c. For WWAN: Reported SAR(W/kg)= Measured SAR(W/kg)*Tune-up Scaling Factor
 - d. For BT/WLAN: Reported SAR(W/kg)= Measured SAR(W/kg)* Duty Cycle scaling factor * Tune-up scaling factor
 - e. For TDD LTE SAR measurement of power class 3, the duty cycle 1:1.59 (62.9 %) was used perform testing and considering the theoretical duty cycle of 63.3% for extended cyclic prefix in the uplink, and the theoretical duty cycle of 62.9% for normal cyclic prefix in uplink, a scaling factor of extended cyclic prefix 63.3%/62.9% = 1.006 is applied to scale-up the measured SAR result. The Reported TDD LTE SAR = measured SAR (W/kg)* Tune-up Scaling Factor* scaling factor for extended cyclic prefix.
2. Per KDB 447498 D01v06, for each exposure position, testing of other required channels within the operating mode of a frequency band is not required when the *reported* 1-g or 10-g SAR for the mid-band or highest output power channel is:
 - ≤ 0.8 W/kg or 2.0 W/kg, for 1-g or 10-g respectively, when the transmission band is ≤ 100 MHz
 - ≤ 0.6 W/kg or 1.5 W/kg, for 1-g or 10-g respectively, when the transmission band is between 100 MHz and 200 MHz
 - ≤ 0.4 W/kg or 1.0 W/kg, for 1-g or 10-g respectively, when the transmission band is ≥ 200 MHz
3. Per KDB 865664 D01v01r04, for each frequency band, repeated SAR measurement is required when the measured SAR is ≥ 0.8 W/kg. Per KDB 865664 D01v01r04, if the extremity repeated SAR is necessary, the same procedures should be adapted for measurements according to extremity and occupational exposure limits by applying a factor of 2.5 for extremity exposure and a factor of 5 for occupational exposure to the corresponding SAR thresholds.
4. The device implements the power management and proximity sensor /receiver detection/hotspot mode for SAR compliance at different exposure conditions (head, body-worn, hotspot, extremity) and the details about the power management decision and sensor detection are provided in the operational description. And the device will invoke corresponding work scenarios power level base on frequency bands/antennas, which can refer to power table at appendix E.
5. Per KDB648474 D04v01r03, for smart phones with a display diagonal dimension > 15.0 cm or an overall diagonal dimension > 16.0 cm, when hotspot mode applies, 10-g extremity SAR is required only for the surfaces and edges with hotspot mode 1-g reported SAR > 1.2 W/kg, however, when power reduction applies to hotspot mode the measured SAR must be scaled to the maximum output power, including tolerance, allowed for phablet modes to compare with the 1.2 W/kg SAR test reduction threshold.
 - a. For this device SAR for WWAN/WLAN transmitter scaled to maximum output power mode for product specific 10g SAR is higher than 1.2 W/kg of LTE Band 7/38/41 and WLAN2.4/5.2/5.8GHz, therefore product specific 10g SAR is necessary.
 - b. WLAN 5.3/5.5GHz tested the product specific 10g SAR since it has no hotspot mode.
 - c. When 10-g product specific 10g SAR is considered, SAR thresholds is specified in the procedures for SAR test reduction and exclusion should be multiplied by 2.5.
6. For some WWAN bands, sensor on power level higher than hotspot power level, so front/back sensor on SAR can represent hotspot conservatively.
7. Although the headset SAR is greater than 0.8 W/kg, the headset SAR verified the worst of the non-headset SAR and less than non-headset SAR, so there is no need to be tested other channels.
8. Although the distance 1gSAR is greater than 0.8 W/kg at body-worn exposure conditions, the distance SAR verified the worst of the non-distance SAR and less than non-distance SAR, so there is no need to be tested other channels.

GSM Note:

1. Per KDB 941225 D01v03r01, for SAR test reduction for GSM / GPRS / EDGE modes is determined by the source-based time-averaged output power including tune-up tolerance. The mode with highest specified time-averaged output power should be tested for SAR compliance in the applicable exposure conditions. For modes with the same specified maximum output power and tolerance, the higher number time-slot configuration should be tested.
2. Other configurations of GSM / GPRS / EDGE are considered as secondary modes. The 3G SAR test reduction procedure is applied, when the maximum output power and tune-up tolerance specified for production units in a secondary mode is $\leq \frac{1}{4}$ dB higher than the primary mode, SAR measurement is not required for the secondary mode.

WCDMA Note:

1. Per KDB 941225 D01v03r01, for SAR testing is measured using a 12.2 kbps RMC with TPC bits configured to all "1's".
2. Per KDB 941225 D01v03r01, RMC 12.2kbps setting is used to evaluate SAR. The maximum output power and tune-up tolerance specified for production units in HSDPA / HSUPA / DC-HSDPA is $\leq \frac{1}{4}$ dB higher than RMC 12.2Kbps or when the highest reported SAR of the RMC12.2Kbps is scaled by the ratio of specified maximum output power and tune-up tolerance of HSDPA / HSUPA / DC-HSDPA to RMC12.2Kbps and the adjusted SAR is ≤ 1.2 W/kg, SAR measurement is not required for HSDPA / HSUPA / DC-HSDPA, and according to the following RF output power, the output power results of the secondary modes (HSDPA / HSUPA / DC-HSDPA) are less than $\frac{1}{4}$ dB higher than the primary modes; therefore, SAR measurement is not required for HSDPA / HSUPA / DC-HSDPA.

LTE Note:

1. Per KDB 941225 D05v02r05, start with the largest channel bandwidth and measure SAR for QPSK with 1 RB allocation, using the RB offset and required test channel combination with the highest maximum output power for RB offsets at the upper edge, middle and lower edge of each required test channel.
2. Per KDB 941225 D05v02r05, 50% RB allocation for QPSK SAR testing follows 1RB QPSK allocation procedure.
3. Per KDB 941225 D05v02r05, for QPSK with 100% RB allocation, SAR is not required when the highest maximum output power for 100 % RB allocation is less than the highest maximum output power in 50% and 1 RB allocations and the highest reported SAR for 1 RB and 50% RB allocation are ≤ 0.8 W/kg. Otherwise, SAR is measured for the highest output power channel; and if the reported SAR is > 1.45 W/kg, the remaining required test channels must also be tested.
4. Per KDB 941225 D05v02r05, 16QAM output power for each RB allocation configuration is $>$ not $\frac{1}{2}$ dB higher than the same configuration in QPSK and the reported SAR for the QPSK configuration is ≤ 1.45 W/kg; Per KDB 941225 D05v02r05, 16QAM SAR testing is not required.
5. Per KDB 941225 D05v02r05, smaller bandwidth output power for each RB allocation configuration is $>$ not $\frac{1}{2}$ dB higher than the same configuration in the largest supported bandwidth, and the reported SAR for the largest supported bandwidth is ≤ 1.45 W/kg; Per KDB 941225 D05v02r05, smaller bandwidth SAR testing is not required.
6. For LTE B5/B26/B38 the maximum bandwidth does not support three non-overlapping channels, per KDB 941225 D05v02r05, when a device supports overlapping channel assignment in a channel bandwidth configuration, the middle channel of the group of overlapping channels should be selected for testing.
7. LTE B5/B38 SAR test was covered by B26/B41; according to April 2015 TCB workshop, SAR test for overlapping LTE bands can be reduced if
 - a. the maximum output power, including tolerance, for the smaller band is \leq the larger band to qualify for the SAR test exclusion
 - b. the channel bandwidth and other operating parameters for the smaller band are fully supported by the larger band

WLAN Note:

1. Per KDB 248227 D01v02r02, for 2.4GHz 802.11g/n SAR testing is not required when the highest reported SAR for DSSS is adjusted by the ratio of OFDM to DSSS specified maximum output power and the adjusted SAR is ≤ 1.2 W/kg.
2. Per KDB 248227 D01v02r02, U-NII-1 SAR testing is not required when the U-NII-2A band highest reported SAR for a test configuration is ≤ 1.2 W/kg, SAR is not required for U-NII-1 band.
3. When the reported SAR of the test position is > 0.4 W/kg, SAR is repeated for the 802.11 transmission mode configuration tested in the initial test position to measure the subsequent next closet/smallest test separation distance and maximum coupling test position on the highest maximum output power channel, until the report SAR is ≤ 0.8 W/kg or all required test position are tested.
4. For all positions / configurations, when the reported SAR is > 0.8 W/kg, SAR is measured for these test positions / configurations on the subsequent next highest measured output power channel(s) until the reported SAR is ≤ 1.2 W/kg or all required channels are tested.
5. During SAR testing the WLAN transmission was verified using a spectrum analyzer.

DSI status description:

The device has the following DSI state which used at different exposure condition.

Exposure Condition	DSI	
Head SAR	DSI 2	Receiver on
Body worn Mode SAR	DSI 4	Default/Full power
Hotspot Mode SAR	DSI 6	Hotspot On
Body worn Mode SAR	DSI 3	Receiver off/Sensor On
Extremity(Handheld) SAR	DSI 5	Receiver off/Sensor On



15.1 Head SAR

Plot No.	Band	BW (MHz)	Modulation	RB Size	RB offset	Mode	Test Position	Gap (mm)	Power State	Ch.	Freq. (MHz)	Sample	Average Power (dBm)	Tune-Up Limit (dBm)	Tune-up Scaling Factor	Duty Cycle %	Duty Cycle Scaling Factor	Power Drift (dB)	Measured 1g SAR (W/kg)	Reported 1g SAR (W/kg)
835MHz																				
01	GSM850	-	-	-	-	GPRS (2 Tx slots)	Right Cheek	0mm	DSI 2	189	836.4	1	30.75	31.50	1.189	-	-	0.03	0.314	0.373
	GSM850	-	-	-	-	GPRS (2 Tx slots)	Right Cheek	0mm	DSI 2	189	836.4	2	30.75	31.50	1.189	-	-	0.05	0.278	0.330
	GSM850	-	-	-	-	GPRS (2 Tx slots)	Right Tilted	0mm	DSI 2	189	836.4	1	30.75	31.50	1.189	-	-	-0.1	0.192	0.228
	GSM850	-	-	-	-	GPRS (2 Tx slots)	Left Cheek	0mm	DSI 2	189	836.4	1	30.75	31.50	1.189	-	-	0.16	0.281	0.334
	GSM850	-	-	-	-	GPRS (2 Tx slots)	Left Tilted	0mm	DSI 2	189	836.4	1	30.75	31.50	1.189	-	-	0.15	0.169	0.201
02	WCDMA V	-	-	-	-	RMC 12.2Kbps	Right Cheek	0mm	DSI 2	4182	836.4	1	22.89	24.00	1.291	-	-	-0.05	0.236	0.305
	WCDMA V	-	-	-	-	RMC 12.2Kbps	Right Tilted	0mm	DSI 2	4182	836.4	1	22.89	24.00	1.291	-	-	-0.01	0.158	0.204
	WCDMA V	-	-	-	-	RMC 12.2Kbps	Left Cheek	0mm	DSI 2	4182	836.4	1	22.89	24.00	1.291	-	-	-0.16	0.211	0.272
	WCDMA V	-	-	-	-	RMC 12.2Kbps	Left Tilted	0mm	DSI 2	4182	836.4	1	22.89	24.00	1.291	-	-	-0.1	0.152	0.196
03	LTE Band 26	15M	QPSK	1	37	-	Right Cheek	0mm	DSI 2	26865	831.5	1	23.38	24.00	1.153	-	-	-0.12	0.268	0.309
	LTE Band 26	15M	QPSK	1	37	-	Right Tilted	0mm	DSI 2	26865	831.5	1	23.38	24.00	1.153	-	-	-0.05	0.154	0.178
	LTE Band 26	15M	QPSK	1	37	-	Left Cheek	0mm	DSI 2	26865	831.5	1	23.38	24.00	1.153	-	-	-0.02	0.235	0.271
	LTE Band 26	15M	QPSK	1	37	-	Left Tilted	0mm	DSI 2	26865	831.5	1	23.38	24.00	1.153	-	-	0.12	0.148	0.171
	LTE Band 26	15M	QPSK	36	20	-	Right Cheek	0mm	DSI 2	26865	831.5	1	22.25	23.00	1.189	-	-	0.16	0.246	0.292
	LTE Band 26	15M	QPSK	36	20	-	Right Tilted	0mm	DSI 2	26865	831.5	1	22.25	23.00	1.189	-	-	0.09	0.142	0.169
	LTE Band 26	15M	QPSK	36	20	-	Left Cheek	0mm	DSI 2	26865	831.5	1	22.25	23.00	1.189	-	-	0.19	0.225	0.267
	LTE Band 26	15M	QPSK	36	20	-	Left Tilted	0mm	DSI 2	26865	831.5	1	22.25	23.00	1.189	-	-	-0.03	0.138	0.164
2600MHz																				
04	LTE Band 7	20M	QPSK	1	49	-	Right Cheek	0mm	DSI 2	21100	2535	1	23.41	24.00	1.146	-	-	0.03	0.117	0.134
	LTE Band 7	20M	QPSK	1	49	-	Right Tilted	0mm	DSI 2	21100	2535	1	23.41	24.00	1.146	-	-	0.11	0.045	0.052
	LTE Band 7	20M	QPSK	1	49	-	Left Cheek	0mm	DSI 2	21100	2535	1	23.41	24.00	1.146	-	-	0.18	0.041	0.047
	LTE Band 7	20M	QPSK	1	49	-	Left Tilted	0mm	DSI 2	21100	2535	1	23.41	24.00	1.146	-	-	0.01	0.039	0.045
	LTE Band 7	20M	QPSK	50	24	-	Right Cheek	0mm	DSI 2	21100	2535	1	22.33	23.00	1.167	-	-	-0.19	0.106	0.124
	LTE Band 7	20M	QPSK	50	24	-	Right Tilted	0mm	DSI 2	21100	2535	1	22.33	23.00	1.167	-	-	0.08	0.042	0.049
	LTE Band 7	20M	QPSK	50	24	-	Left Cheek	0mm	DSI 2	21100	2535	1	22.33	23.00	1.167	-	-	-0.07	0.038	0.044
	LTE Band 7	20M	QPSK	50	24	-	Left Tilted	0mm	DSI 2	21100	2535	1	22.33	23.00	1.167	-	-	0.14	0.033	0.039
05	LTE Band 41	20M	QPSK	1	49	-	Right Cheek	0mm	DSI 2	40620	2593	1	23.01	24.00	1.256	62.9	1.006	0.12	0.046	0.058
	LTE Band 41	20M	QPSK	1	49	-	Right Tilted	0mm	DSI 2	40620	2593	1	23.01	24.00	1.256	62.9	1.006	-0.01	0.024	0.030
	LTE Band 41	20M	QPSK	1	49	-	Left Cheek	0mm	DSI 2	40620	2593	1	23.01	24.00	1.256	62.9	1.006	-0.17	0.022	0.028
	LTE Band 41	20M	QPSK	1	49	-	Left Tilted	0mm	DSI 2	40620	2593	1	23.01	24.00	1.256	62.9	1.006	-0.17	0.018	0.023
	LTE Band 41	20M	QPSK	50	24	-	Right Cheek	0mm	DSI 2	40620	2593	1	21.94	23.00	1.276	62.9	1.006	-0.12	0.034	0.044
	LTE Band 41	20M	QPSK	50	24	-	Right Tilted	0mm	DSI 2	40620	2593	1	21.94	23.00	1.276	62.9	1.006	0.04	0.020	0.026
	LTE Band 41	20M	QPSK	50	24	-	Left Cheek	0mm	DSI 2	40620	2593	1	21.94	23.00	1.276	62.9	1.006	0.11	0.018	0.023
	LTE Band 41	20M	QPSK	50	24	-	Left Tilted	0mm	DSI 2	40620	2593	1	21.94	23.00	1.276	62.9	1.006	-0.01	0.015	0.019



Plot No.	Band	Mode	Test Position	Gap (mm)	Power State	Ch.	Freq. (MHz)	Sample	Average Power (dBm)	Tune-Up Limit (dBm)	Tune-up Scaling Factor	Duty Cycle %	Duty Cycle Scaling Factor	Power Drift (dB)	Measured 1g SAR (W/kg)	Reported 1g SAR (W/kg)
2450MHz																
	Bluetooth	DH5 1Mbps	Right Cheek	0mm	Full	39	2441	1	9.69	11.00	1.353	77.51	1.290	-0.13	0.031	0.054
	Bluetooth	DH5 1Mbps	Right Tilted	0mm	Full	39	2441	1	9.69	11.00	1.353	77.51	1.290	-0.04	0.028	0.049
06	Bluetooth	DH5 1Mbps	Left Cheek	0mm	Full	39	2441	1	9.69	11.00	1.353	77.51	1.290	0.14	0.102	0.178
	Bluetooth	DH5 1Mbps	Left Tilted	0mm	Full	39	2441	1	9.69	11.00	1.353	77.51	1.290	0.08	0.070	0.123
	WLAN2.4GHz	802.11b 1Mbps	Right Cheek	0mm	Reduced	6	2437	1	16.21	17.50	1.346	97.59	1.025	-0.05	0.471	0.650
	WLAN2.4GHz	802.11b 1Mbps	Right Tilted	0mm	Reduced	6	2437	1	16.21	17.50	1.346	97.59	1.025	0.18	0.493	0.680
	WLAN2.4GHz	802.11b 1Mbps	Left Cheek	0mm	Reduced	6	2437	1	16.21	17.50	1.346	97.59	1.025	-0.09	0.950	1.311
	WLAN2.4GHz	802.11b 1Mbps	Left Tilted	0mm	Reduced	6	2437	1	16.21	17.50	1.346	97.59	1.025	0.12	0.642	0.886
07	WLAN2.4GHz	802.11b 1Mbps	Left Cheek	0mm	Reduced	1	2412	1	15.75	17.50	1.496	97.59	1.025	0.02	0.856	1.313
	WLAN2.4GHz	802.11b 1Mbps	Left Cheek	0mm	Reduced	1	2412	2	15.75	17.50	1.496	97.59	1.025	0.06	0.851	1.305
	WLAN2.4GHz	802.11b 1Mbps	Left Cheek	0mm	Reduced	11	2462	1	15.19	17.00	1.517	97.59	1.025	0.07	0.811	1.261
	WLAN2.4GHz	802.11g 6Mbps	Left Cheek	0mm	Reduced	6	2437	1	16.46	17.50	1.271	87.44	1.144	0.08	0.669	0.972
	WLAN2.4GHz	802.11b 1Mbps	Left Tilted	0mm	Reduced	1	2412	1	15.75	17.50	1.496	97.59	1.025	0.08	0.602	0.923
WLAN5GHz																
	WLAN5.3GHz	802.11a 6Mbps	Right Cheek	0mm	Full	64	5320	1	18.29	19.50	1.321	89.52	1.117	-0.13	0.154	0.227
	WLAN5.3GHz	802.11a 6Mbps	Right Tilted	0mm	Full	64	5320	1	18.29	19.50	1.321	89.52	1.117	-0.12	0.142	0.210
08	WLAN5.3GHz	802.11a 6Mbps	Left Cheek	0mm	Full	64	5320	1	18.29	19.50	1.321	89.52	1.117	0.13	0.495	0.731
	WLAN5.3GHz	802.11a 6Mbps	Left Cheek	0mm	Full	64	5320	2	18.29	19.50	1.321	89.52	1.117	-0.05	0.446	0.658
	WLAN5.3GHz	802.11a 6Mbps	Left Tilted	0mm	Full	64	5320	1	18.29	19.50	1.321	89.52	1.117	-0.17	0.277	0.409
	WLAN5.5GHz	802.11a 6Mbps	Right Cheek	0mm	Full	116	5580	1	18.35	19.50	1.303	89.52	1.117	0.02	0.110	0.160
	WLAN5.5GHz	802.11a 6Mbps	Right Tilted	0mm	Full	116	5580	1	18.35	19.50	1.303	89.52	1.117	-0.05	0.100	0.146
09	WLAN5.5GHz	802.11a 6Mbps	Left Cheek	0mm	Full	116	5580	1	18.35	19.50	1.303	89.52	1.117	-0.01	0.259	0.377
	WLAN5.5GHz	802.11a 6Mbps	Left Tilted	0mm	Full	116	5580	1	18.35	19.50	1.303	89.52	1.117	-0.09	0.155	0.226
	WLAN5.8GHz	802.11a 6Mbps	Right Cheek	0mm	Full	149	5745	1	18.02	19.50	1.406	89.52	1.117	-0.11	0.177	0.278
	WLAN5.8GHz	802.11a 6Mbps	Right Tilted	0mm	Full	149	5745	1	18.02	19.50	1.406	89.52	1.117	-0.13	0.156	0.245
10	WLAN5.8GHz	802.11a 6Mbps	Left Cheek	0mm	Full	149	5745	1	18.02	19.50	1.406	89.52	1.117	-0.1	0.412	0.647
	WLAN5.8GHz	802.11a 6Mbps	Left Tilted	0mm	Full	149	5745	1	18.02	19.50	1.406	89.52	1.117	-0.06	0.245	0.385



15.2 Hotspot SAR

Plot No.	Band	BW (MHz)	Modulation	RB Size	RB offset	Mode	Test Position	Gap (mm)	Power State	Ch.	Freq. (MHz)	Sample	Average Power (dBm)	Tune-Up Limit (dBm)	Tune-up Scaling Factor	Duty Cycle %	Duty Cycle Scaling Factor	Power Drift (dB)	Measured 1g SAR (W/kg)	Reported 1g SAR (W/kg)
835MHz																				
11	GSM850	-	-	-	-	GPRS (2 Tx slots)	Front	5mm	DSI3	189	836.4	1	30.75	31.50	1.189	-	-	-0.19	0.535	0.636
	GSM850	-	-	-	-	GPRS (2 Tx slots)	Back	5mm	DSI3	189	836.4	1	30.75	31.50	1.189	-	-	-0.01	0.961	1.142
	GSM850	-	-	-	-	GPRS (2 Tx slots)	Back	5mm	DSI3	189	836.4	2	30.75	31.50	1.189	-	-	0.03	0.722	0.858
	GSM850	-	-	-	-	GPRS (2 Tx slots)	Back	5mm	DSI3	128	824.2	1	30.72	31.50	1.197	-	-	-0.1	0.808	0.967
	GSM850	-	-	-	-	GPRS (2 Tx slots)	Back	5mm	DSI3	251	848.8	1	30.75	31.50	1.189	-	-	0.13	0.924	1.098
	GSM850	-	-	-	-	GPRS (2 Tx slots)	Right Side	5mm	DSI6	189	836.4	1	30.75	31.50	1.189	-	-	0.02	0.548	0.651
	GSM850	-	-	-	-	GPRS (2 Tx slots)	Left Side	5mm	DSI6	189	836.4	1	30.75	31.50	1.189	-	-	-0.1	0.328	0.390
	GSM850	-	-	-	-	GPRS (2 Tx slots)	Bottom Side	5mm	DSI6	189	836.4	1	30.75	31.50	1.189	-	-	-0.07	0.530	0.630
12	WCDMA V	-	-	-	-	RMC 12.2Kbps	Front	5mm	DSI3	4182	836.4	1	22.89	24.00	1.291	-	-	0.01	0.611	0.789
	WCDMA V	-	-	-	-	RMC 12.2Kbps	Back	5mm	DSI3	4182	836.4	1	22.89	24.00	1.291	-	-	-0.17	0.811	1.047
	WCDMA V	-	-	-	-	RMC 12.2Kbps	Back	5mm	DSI3	4132	826.4	1	22.83	24.00	1.309	-	-	-0.13	0.783	1.025
	WCDMA V	-	-	-	-	RMC 12.2Kbps	Back	5mm	DSI3	4233	846.6	1	22.85	24.00	1.303	-	-	0.11	0.772	1.006
	WCDMA V	-	-	-	-	RMC 12.2Kbps	Right Side	5mm	DSI6	4182	836.4	1	22.89	24.00	1.291	-	-	-0.18	0.378	0.488
	WCDMA V	-	-	-	-	RMC 12.2Kbps	Left Side	5mm	DSI6	4182	836.4	1	22.89	24.00	1.291	-	-	0.08	0.339	0.438
	WCDMA V	-	-	-	-	RMC 12.2Kbps	Bottom Side	5mm	DSI6	4182	836.4	1	22.89	24.00	1.291	-	-	0.17	0.803	1.037
	WCDMA V	-	-	-	-	RMC 12.2Kbps	Bottom Side	5mm	DSI6	4132	826.4	1	22.83	24.00	1.309	-	-	0.01	0.755	0.988
13	WCDMA V	-	-	-	-	RMC 12.2Kbps	Bottom Side	5mm	DSI6	4233	846.6	1	22.85	24.00	1.303	-	-	0.08	0.745	0.971
	LTE Band 26	15M	QPSK	1	37	-	Front	5mm	DSI3	26865	831.5	1	23.38	24.00	1.153	-	-	0.14	0.534	0.616
	LTE Band 26	15M	QPSK	1	37	-	Back	5mm	DSI3	26865	831.5	1	23.38	24.00	1.153	-	-	0.17	0.851	0.982
	LTE Band 26	15M	QPSK	1	37	-	Back	5mm	DSI3	26765	821.5	1	23.34	24.00	1.164	-	-	0.1	0.877	1.021
	LTE Band 26	15M	QPSK	1	37	-	Back	5mm	DSI3	26965	841.5	1	23.33	24.00	1.167	-	-	-0.19	0.889	1.037
	LTE Band 26	15M	QPSK	1	37	-	Right Side	5mm	DSI6	26865	831.5	1	23.38	24.00	1.153	-	-	-0.1	0.304	0.351
	LTE Band 26	15M	QPSK	1	37	-	Left Side	5mm	DSI6	26865	831.5	1	23.38	24.00	1.153	-	-	-0.09	0.255	0.294
	LTE Band 26	15M	QPSK	1	37	-	Bottom Side	5mm	DSI6	26865	831.5	1	23.38	24.00	1.153	-	-	-0.09	0.466	0.538
	LTE Band 26	15M	QPSK	36	20	-	Front	5mm	DSI3	26865	831.5	1	22.25	23.00	1.189	-	-	-0.19	0.421	0.500
	LTE Band 26	15M	QPSK	36	20	-	Back	5mm	DSI3	26865	831.5	1	22.25	23.00	1.189	-	-	-0.08	0.733	0.871
	LTE Band 26	15M	QPSK	36	20	-	Back	5mm	DSI3	26765	821.5	1	22.20	23.00	1.202	-	-	-0.12	0.759	0.913
	LTE Band 26	15M	QPSK	36	20	-	Back	5mm	DSI3	26965	841.5	1	22.18	23.00	1.208	-	-	0.02	0.747	0.902
	LTE Band 26	15M	QPSK	36	20	-	Right Side	5mm	DSI6	26865	831.5	1	22.25	23.00	1.189	-	-	-0.12	0.281	0.334
	LTE Band 26	15M	QPSK	36	20	-	Left Side	5mm	DSI6	26865	831.5	1	22.25	23.00	1.189	-	-	-0.13	0.221	0.263
	LTE Band 26	15M	QPSK	36	20	-	Bottom Side	5mm	DSI6	26865	831.5	1	22.25	23.00	1.189	-	-	0.08	0.405	0.481
	LTE Band 26	15M	QPSK	75	0	-	Back	5mm	DSI3	26865	831.5	1	22.13	23.00	1.222	-	-	-0.05	0.744	0.909
2600MHz																				
14	LTE Band 7	20M	QPSK	1	0	-	Front	5mm	DSI3	21350	2560	1	15.18	16.00	1.208	-	-	-0.14	0.308	0.372
	LTE Band 7	20M	QPSK	1	0	-	Back	5mm	DSI3	21350	2560	1	15.18	16.00	1.208	-	-	0.16	1.090	1.317
	LTE Band 7	20M	QPSK	1	49	-	Back	5mm	DSI3	20850	2510	1	14.62	16.00	1.374	-	-	-0.12	0.938	1.289
	LTE Band 7	20M	QPSK	1	49	-	Back	5mm	DSI3	21100	2535	1	14.66	16.00	1.361	-	-	-0.11	0.788	1.073
	LTE Band 7	20M	QPSK	1	0	-	Right Side	5mm	DSI6	21350	2560	1	14.31	15.00	1.172	-	-	0.02	0.035	0.041
	LTE Band 7	20M	QPSK	1	0	-	Left Side	5mm	DSI6	21350	2560	1	14.31	15.00	1.172	-	-	-0.09	0.042	0.049
	LTE Band 7	20M	QPSK	1	0	-	Bottom Side	5mm	DSI6	21350	2560	1	14.31	15.00	1.172	-	-	-0.13	1.160	1.360
	LTE Band 7	20M	QPSK	1	0	-	Bottom Side	5mm	DSI6	21350	2560	2	14.31	15.00	1.172	-	-	0.05	0.933	1.094
	LTE Band 7	20M	QPSK	1	49	-	Bottom Side	5mm	DSI6	20850	2510	1	13.59	15.00	1.384	-	-	0.07	0.745	1.031
	LTE Band 7	20M	QPSK	1	49	-	Bottom Side	5mm	DSI6	21100	2535	1	13.64	15.00	1.368	-	-	0.05	0.783	1.071
	LTE Band 7	20M	QPSK	50	0	-	Front	5mm	DSI3	21350	2560	1	14.13	15.00	1.222	-	-	-0.17	0.260	0.318
	LTE Band 7	20M	QPSK	50	0	-	Back	5mm	DSI3	21350	2560	1	14.13	15.00	1.222	-	-	-0.06	0.881	1.076
	LTE Band 7	20M	QPSK	50	24	-	Back	5mm	DSI3	20850	2510	1	13.49	15.00	1.416	-	-	-0.07	0.765	1.083
	LTE Band 7	20M	QPSK	50	24	-	Back	5mm	DSI3	21100	2535	1	13.52	15.00	1.406	-	-	-0.11	0.698	0.981
	LTE Band 7	20M	QPSK	50	0	-	Right Side	5mm	DSI6	21350	2560	1	13.27	14.00	1.183	-	-	-0.11	0.027	0.032
	LTE Band 7	20M	QPSK	50	0	-	Left Side	5mm	DSI6	21350	2560	1	13.27	14.00	1.183	-	-	0.11	0.031	0.037
	LTE Band 7	20M	QPSK	50	0	-	Bottom Side	5mm	DSI6	21350	2560	1	13.27	14.00	1.183	-	-	-0.05	0.916	1.084



FCC SAR Test Report

Report No. : FA332006-01

	LTE Band 7	20M	QPSK	50	24	-	Bottom Side	5mm	DSI6	20850	2510	1	12.53	14.00	1.403	-	-	-0.07	0.655	0.919
	LTE Band 7	20M	QPSK	50	24	-	Bottom Side	5mm	DSI6	21100	2535	1	12.56	14.00	1.393	-	-	0.11	0.633	0.882
	LTE Band 7	20M	QPSK	100	0	-	Back	5mm	DSI3	21350	2560	1	13.68	15.00	1.355	-	-	0.05	0.755	1.023
	LTE Band 7	20M	QPSK	100	0	-	Bottom Side	5mm	DSI6	21350	2560	1	12.78	14.00	1.324	-	-	0.09	0.797	1.056
	LTE Band 41	20M	QPSK	1	0	-	Front	5mm	DSI3	40620	2593	1	15.83	16.50	1.167	62.9	1.006	0.04	0.510	0.599
	LTE Band 41	20M	QPSK	1	0	-	Back	5mm	DSI3	40620	2593	1	15.83	16.50	1.167	62.9	1.006	-0.14	0.955	1.121
	LTE Band 41	20M	QPSK	1	0	-	Back	5mm	DSI3	39750	2506	1	15.67	16.50	1.211	62.9	1.006	-0.03	0.627	0.764
	LTE Band 41	20M	QPSK	1	0	-	Back	5mm	DSI3	40185	2549.5	1	15.39	16.50	1.291	62.9	1.006	0.15	0.928	1.205
	LTE Band 41	20M	QPSK	1	0	-	Back	5mm	DSI3	41055	2636.5	1	15.23	16.50	1.340	62.9	1.006	-0.06	0.921	1.241
	LTE Band 41	20M	QPSK	1	0	-	Back	5mm	DSI3	41490	2680	1	15.53	16.50	1.250	62.9	1.006	0.05	0.993	1.249
	LTE Band 41	20M	QPSK	1	0	-	Right Side	5mm	DSI6	40620	2593	1	15.83	16.50	1.167	62.9	1.006	-0.15	0.040	0.047
	LTE Band 41	20M	QPSK	1	0	-	Left Side	5mm	DSI6	40620	2593	1	15.83	16.50	1.167	62.9	1.006	0.19	0.053	0.062
15	LTE Band 41	20M	QPSK	1	0	-	Bottom Side	5mm	DSI6	40620	2593	1	15.83	16.50	1.167	62.9	1.006	-0.13	1.130	1.326
	LTE Band 41	20M	QPSK	1	0	-	Bottom Side	5mm	DSI6	39750	2506	1	15.67	16.50	1.211	62.9	1.006	-0.14	0.598	0.728
	LTE Band 41	20M	QPSK	1	0	-	Bottom Side	5mm	DSI6	40185	2549.5	1	15.39	16.50	1.291	62.9	1.006	0.01	0.851	1.105
	LTE Band 41	20M	QPSK	1	0	-	Bottom Side	5mm	DSI6	41055	2636.5	1	15.23	16.50	1.340	62.9	1.006	-0.05	0.910	1.226
	LTE Band 41	20M	QPSK	1	0	-	Bottom Side	5mm	DSI6	41490	2680	1	15.53	16.50	1.250	62.9	1.006	0.18	1.040	1.308
	LTE Band 41	20M	QPSK	50	24	-	Front	5mm	DSI3	40620	2593	1	14.77	15.50	1.183	62.9	1.006	0.07	0.407	0.484
	LTE Band 41	20M	QPSK	50	24	-	Back	5mm	DSI3	40620	2593	1	14.77	15.50	1.183	62.9	1.006	-0.13	0.756	0.900
	LTE Band 41	20M	QPSK	50	24	-	Back	5mm	DSI3	39750	2506	1	14.64	15.50	1.219	62.9	1.006	-0.12	0.498	0.611
	LTE Band 41	20M	QPSK	50	24	-	Back	5mm	DSI3	40185	2549.5	1	14.22	15.50	1.343	62.9	1.006	0.11	0.737	0.996
	LTE Band 41	20M	QPSK	50	24	-	Back	5mm	DSI3	41055	2636.5	1	14.23	15.50	1.340	62.9	1.006	-0.05	0.735	0.991
	LTE Band 41	20M	QPSK	50	24	-	Back	5mm	DSI3	41490	2680	1	14.35	15.50	1.303	62.9	1.006	-0.03	0.789	1.034
	LTE Band 41	20M	QPSK	50	24	-	Right Side	5mm	DSI6	40620	2593	1	14.77	15.50	1.183	62.9	1.006	0.14	0.032	0.038
	LTE Band 41	20M	QPSK	50	24	-	Left Side	5mm	DSI6	40620	2593	1	14.77	15.50	1.183	62.9	1.006	-0.1	0.042	0.050
	LTE Band 41	20M	QPSK	50	24	-	Bottom Side	5mm	DSI6	40620	2593	1	14.77	15.50	1.183	62.9	1.006	-0.04	0.898	1.069
	LTE Band 41	20M	QPSK	50	24	-	Bottom Side	5mm	DSI6	39750	2506	1	14.64	15.50	1.219	62.9	1.006	-0.01	0.475	0.582
	LTE Band 41	20M	QPSK	50	24	-	Bottom Side	5mm	DSI6	40185	2549.5	1	14.22	15.50	1.343	62.9	1.006	-0.11	0.676	0.913
	LTE Band 41	20M	QPSK	50	24	-	Bottom Side	5mm	DSI6	41055	2636.5	1	14.23	15.50	1.340	62.9	1.006	-0.08	0.723	0.974
	LTE Band 41	20M	QPSK	50	24	-	Bottom Side	5mm	DSI6	41490	2680	1	14.35	15.50	1.303	62.9	1.006	-0.08	0.826	1.083
	LTE Band 41	20M	QPSK	100	0	-	Back	5mm	DSI3	40620	2593	1	14.65	15.50	1.216	62.9	1.006	0.05	0.781	0.956
	LTE Band 41	20M	QPSK	100	0	-	Bottom Side	5mm	DSI6	40620	2593	1	14.65	15.50	1.216	62.9	1.006	0.01	0.856	1.047



Plot No.	Band	Mode	Test Position	Gap (mm)	Power State	Ch.	Freq. (MHz)	Sample	Average Power (dBm)	Tune-Up Limit (dBm)	Tune-up Scaling Factor	Duty Cycle %	Duty Cycle Scaling Factor	Power Drift (dB)	Measured 1g SAR (W/kg)	Reported 1g SAR (W/kg)
2450MHz																
	Bluetooth	DH5 1Mbps	Front	5mm	Full	39	2441	1	9.69	11.00	1.353	77.51	1.290	0.01	0.030	0.052
16	Bluetooth	DH5 1Mbps	Back	5mm	Full	39	2441	1	9.69	11.00	1.353	77.51	1.290	0.06	0.071	0.125
	Bluetooth	DH5 1Mbps	Right Side	5mm	Full	39	2441	1	9.69	11.00	1.353	77.51	1.290	-0.11	0.033	0.058
	Bluetooth	DH5 1Mbps	Top Side	5mm	Full	39	2441	1	9.69	11.00	1.353	77.51	1.290	-0.13	0.027	0.047
	WLAN2.4GHz	802.11b 1Mbps	Front	5mm	Reduced	6	2437	1	18.72	19.50	1.197	97.59	1.025	-0.12	0.574	0.704
	WLAN2.4GHz	802.11b 1Mbps	Back	5mm	Reduced	6	2437	1	18.72	19.50	1.197	97.59	1.025	0.09	0.860	1.055
17	WLAN2.4GHz	802.11b 1Mbps	Back	5mm	Reduced	1	2412	1	17.69	19.50	1.517	97.59	1.025	0.02	0.856	1.331
	WLAN2.4GHz	802.11b 1Mbps	Back	5mm	Reduced	11	2462	1	17.57	19.50	1.560	97.59	1.025	0.06	0.821	1.312
	WLAN2.4GHz	802.11b 6Mbps	Back	5mm	Reduced	6	2437	1	18.92	19.50	1.143	87.44	1.144	0.05	0.820	1.072
	WLAN2.4GHz	802.11b 1Mbps	Right Side	5mm	Reduced	6	2437	1	18.72	19.50	1.197	97.59	1.025	-0.19	0.598	0.734
	WLAN2.4GHz	802.11b 1Mbps	Top Side	5mm	Reduced	6	2437	1	18.72	19.50	1.197	97.59	1.025	0.03	0.531	0.651
WLAN5GHz																
	WLAN5.2GHz	802.11a 6Mbps	Front	5mm	Reduced	40	5200	1	13.75	15.00	1.333	89.52	1.117	0.13	0.209	0.311
18	WLAN5.2GHz	802.11a 6Mbps	Back	5mm	Reduced	40	5200	1	13.75	15.00	1.333	89.52	1.117	0.04	0.772	1.150
	WLAN5.2GHz	802.11a 6Mbps	Back	5mm	Reduced	40	5200	2	13.75	15.00	1.333	89.52	1.117	0.06	0.741	1.103
	WLAN5.2GHz	802.11a 6Mbps	Back	5mm	Reduced	44	5220	1	13.16	15.00	1.527	89.52	1.117	0.03	0.586	1.000
	WLAN5.2GHz	802.11a 6Mbps	Right Side	5mm	Reduced	40	5200	1	13.75	15.00	1.333	89.52	1.117	0.04	0.549	0.818
	WLAN5.2GHz	802.11a 6Mbps	Top Side	5mm	Reduced	40	5200	1	13.75	15.00	1.333	89.52	1.117	-0.06	0.247	0.368
	WLAN5.8GHz	802.11a 6Mbps	Front	5mm	Reduced	149	5745	1	13.21	14.50	1.345	89.52	1.117	0.18	0.121	0.182
	WLAN5.8GHz	802.11a 6Mbps	Back	5mm	Reduced	149	5745	1	13.21	14.50	1.345	89.52	1.117	0.08	0.595	0.894
	WLAN5.8GHz	802.11a 6Mbps	Right Side	5mm	Reduced	149	5745	1	13.21	14.50	1.345	89.52	1.117	0.06	0.488	0.733
	WLAN5.8GHz	802.11a 6Mbps	Top Side	5mm	Reduced	149	5745	1	13.21	14.50	1.345	89.52	1.117	0.05	0.275	0.413
19	WLAN5.8GHz	802.11a 6Mbps	Back	5mm	Reduced	157	5785	1	12.98	14.50	1.419	89.52	1.117	0.14	0.656	1.040



15.3 Body Worn Accessory SAR

Plot No.	Band	BW (MHz)	Modulation	RB Size	RB offset	Mode	Test Position	Gap (mm)	Headset	Power State	Ch.	Freq. (MHz)	Sample	Average Power (dBm)	Tune-Up Limit (dBm)	Tune-up Scaling Factor	Duty Cycle %	Duty Cycle Scaling Factor	Power Drift (dB)	Measured 1g SAR (W/kg)	Reported 1g SAR (W/kg)
835MHz																					
20	GSM850	-	-	-	-	GPRS (2 Tx slots)	Front	5mm	-	DSI3	189	836.4	1	30.75	31.50	1.189	-	-	-0.19	0.535	0.636
	GSM850	-	-	-	-	GPRS (2 Tx slots)	Back	5mm	-	DSI3	189	836.4	1	30.75	31.50	1.189	-	-	-0.01	0.961	1.142
	GSM850	-	-	-	-	GPRS (2 Tx slots)	Back	5mm	-	DSI3	189	836.4	2	30.75	31.50	1.189	-	-	0.03	0.722	0.858
	GSM850	-	-	-	-	GPRS (2 Tx slots)	Back	5mm	-	DSI3	128	824.2	1	30.72	31.50	1.197	-	-	-0.1	0.808	0.967
	GSM850	-	-	-	-	GPRS (2 Tx slots)	Back	5mm	-	DSI3	251	848.8	1	30.75	31.50	1.189	-	-	0.13	0.924	1.098
21	WCDMA V	-	-	-	-	RMC 12.2Kbps	Front	5mm	-	DSI3	4182	836.4	1	22.89	24.00	1.291	-	-	0.01	0.611	0.789
	WCDMA V	-	-	-	-	RMC 12.2Kbps	Back	5mm	-	DSI3	4182	836.4	1	22.89	24.00	1.291	-	-	-0.17	0.811	1.047
	WCDMA V	-	-	-	-	RMC 12.2Kbps	Back	5mm	-	DSI3	4132	826.4	1	22.83	24.00	1.309	-	-	-0.13	0.783	1.025
	WCDMA V	-	-	-	-	RMC 12.2Kbps	Back	5mm	-	DSI3	4233	846.6	1	22.85	24.00	1.303	-	-	0.11	0.772	1.006
	LTE Band 26	15M	QPSK	1	37	-	Front	5mm	-	DSI3	26865	831.5	1	23.38	24.00	1.153	-	-	0.14	0.534	0.616
22	LTE Band 26	15M	QPSK	1	37	-	Back	5mm	-	DSI3	26865	831.5	1	23.38	24.00	1.153	-	-	0.17	0.851	0.982
	LTE Band 26	15M	QPSK	1	37	-	Back	5mm	-	DSI3	26765	821.5	1	23.34	24.00	1.164	-	-	0.1	0.877	1.021
	LTE Band 26	15M	QPSK	1	37	-	Back	5mm	-	DSI3	26965	841.5	1	23.33	24.00	1.167	-	-	-0.19	0.889	1.037
	LTE Band 26	15M	QPSK	36	20	-	Front	5mm	-	DSI3	26865	831.5	1	22.25	23.00	1.189	-	-	-0.19	0.421	0.500
	LTE Band 26	15M	QPSK	36	20	-	Back	5mm	-	DSI3	26865	831.5	1	22.25	23.00	1.189	-	-	-0.08	0.733	0.871
	LTE Band 26	15M	QPSK	36	20	-	Back	5mm	-	DSI3	26765	821.5	1	22.20	23.00	1.202	-	-	-0.12	0.759	0.913
	LTE Band 26	15M	QPSK	36	20	-	Back	5mm	-	DSI3	26965	841.5	1	22.18	23.00	1.208	-	-	0.02	0.747	0.902
	LTE Band 26	15M	QPSK	75	0	-	Back	5mm	-	DSI3	26865	831.5	1	22.13	23.00	1.222	-	-	-0.05	0.744	0.909
	2600MHz																				
	LTE Band 7	20M	QPSK	1	0	-	Front	5mm	-	DSI3	21350	2560	1	15.18	16.00	1.208	-	-	-0.14	0.308	0.372
23	LTE Band 7	20M	QPSK	1	0	-	Back	5mm	-	DSI3	21350	2560	1	15.18	16.00	1.208	-	-	0.16	1.090	1.317
	LTE Band 7	20M	QPSK	1	49	-	Back	5mm	-	DSI3	20850	2510	1	14.62	16.00	1.374	-	-	-0.12	0.938	1.289
	LTE Band 7	20M	QPSK	1	49	-	Back	5mm	-	DSI3	21100	2535	1	14.66	16.00	1.361	-	-	-0.11	0.788	1.073
	LTE Band 7	20M	QPSK	1	49	-	Back	5mm	Headset 1	DSI3	21350	2560	1	15.18	16.00	1.208	-	-	0.14	0.957	1.156
	LTE Band 7	20M	QPSK	1	49	-	Front	14mm	-	DSI4	21350	2560	1	23.40	24.00	1.148	-	-	-0.03	0.914	1.049
	LTE Band 7	20M	QPSK	1	49	-	Front	14mm	-	DSI4	20850	2510	1	23.10	24.00	1.230	-	-	0.05	0.845	1.040
	LTE Band 7	20M	QPSK	1	49	-	Front	14mm	-	DSI4	21100	2535	1	23.41	24.00	1.146	-	-	0.01	0.895	1.025
	LTE Band 7	20M	QPSK	1	49	-	Back	21mm	-	DSI4	21350	2560	1	23.40	24.00	1.148	-	-	0.05	0.957	1.099
	LTE Band 7	20M	QPSK	50	0	-	Front	5mm	-	DSI3	21350	2560	1	14.13	15.00	1.222	-	-	-0.17	0.260	0.318
	LTE Band 7	20M	QPSK	50	0	-	Back	5mm	-	DSI3	21350	2560	1	14.13	15.00	1.222	-	-	-0.06	0.881	1.076
24	LTE Band 7	20M	QPSK	50	24	-	Back	5mm	-	DSI3	20850	2510	1	13.49	15.00	1.416	-	-	-0.07	0.765	1.083
	LTE Band 7	20M	QPSK	50	24	-	Back	5mm	-	DSI3	21100	2535	1	13.52	15.00	1.406	-	-	-0.11	0.698	0.981
	LTE Band 7	20M	QPSK	100	0	-	Back	5mm	-	DSI3	21350	2560	1	13.68	15.00	1.355	-	-	0.05	0.755	1.023
	LTE Band 41	20M	QPSK	1	0	-	Front	5mm	-	DSI3	40620	2593	1	15.83	16.50	1.167	62.9	1.006	0.04	0.510	0.599
	LTE Band 41	20M	QPSK	1	0	-	Back	5mm	-	DSI3	40620	2593	1	15.83	16.50	1.167	62.9	1.006	-0.14	0.955	1.121
	LTE Band 41	20M	QPSK	1	0	-	Back	5mm	-	DSI3	39750	2506	1	15.67	16.50	1.211	62.9	1.006	-0.03	0.627	0.764
	LTE Band 41	20M	QPSK	1	0	-	Back	5mm	-	DSI3	40185	2549.5	1	15.39	16.50	1.291	62.9	1.006	0.15	0.928	1.205
	LTE Band 41	20M	QPSK	1	0	-	Back	5mm	-	DSI3	41055	2636.5	1	15.23	16.50	1.340	62.9	1.006	-0.06	0.921	1.241
	LTE Band 41	20M	QPSK	1	0	-	Back	5mm	-	DSI3	41490	2680	1	15.53	16.50	1.250	62.9	1.006	0.05	0.993	1.249
	LTE Band 41	20M	QPSK	1	0	-	Back	5mm	Headset 1	DSI3	41490	2680	1	15.53	16.50	1.250	62.9	1.006	-0.13	0.933	1.173
	LTE Band 41	20M	QPSK	1	0	-	Front	14mm	-	DSI4	40620	2593	1	23.01	24.00	1.256	62.9	1.006	-0.09	0.526	0.665
	LTE Band 41	20M	QPSK	1	0	-	Back	21mm	-	DSI4	41490	2680	1	22.63	24.00	1.371	62.9	1.006	-0.05	0.533	0.735
	LTE Band 41	20M	QPSK	50	24	-	Front	5mm	-	DSI3	40620	2593	1	14.77	15.50	1.183	62.9	1.006	0.07	0.407	0.484
	LTE Band 41	20M	QPSK	50	24	-	Back	5mm	-	DSI3	40620	2593	1	14.77	15.50	1.183	62.9	1.006	-0.13	0.756	0.900
	LTE Band 41	20M	QPSK	50	24	-	Back	5mm	-	DSI3	39750	2506	1	14.64	15.50	1.219	62.9	1.006	-0.12	0.498	0.611
	LTE Band 41	20M	QPSK	50	24	-	Back	5mm	-	DSI3	40185	2549.5	1	14.22	15.50	1.343	62.9	1.006	0.11	0.737	0.996
	LTE Band 41	20M	QPSK	50	24	-	Back	5mm	-	DSI3	41055	2636.5	1	14.23	15.50	1.340	62.9	1.006	-0.05	0.735	0.991
	LTE Band 41	20M	QPSK	50	24	-	Back	5mm	-	DSI3	41490	2680	1	14.35	15.50	1.303	62.9	1.006	-0.03	0.789	1.034
	LTE Band 41	20M	QPSK	100	0	-	Back	5mm	-	DSI3	40620	2593	1	14.65	15.50	1.216	62.9	1.006	0.05	0.781	0.956



Plot No.	Band	Mode	Test Position	Gap (mm)	Headset	Power State	Ch.	Freq. (MHz)	Sample	Average Power (dBm)	Tune-Up Limit (dBm)	Tune-up Scaling Factor	Duty Cycle %	Duty Cycle Scaling Factor	Power Drift (dB)	Measured 1g SAR (W/kg)	Reported 1g SAR (W/kg)
2450MHz																	
	Bluetooth	DH5 1Mbps	Front	5mm	-	Full	39	2441	1	9.69	11.00	1.353	77.51	1.290	0.01	0.030	0.052
25	Bluetooth	DH5 1Mbps	Back	5mm	-	Full	39	2441	1	9.69	11.00	1.353	77.51	1.290	0.06	0.071	0.125
	WLAN2.4GHz	802.11b 1Mbps	Front	5mm	-	Reduced	6	2437	1	18.72	19.50	1.197	97.59	1.025	-0.12	0.574	0.704
	WLAN2.4GHz	802.11b 1Mbps	Back	5mm	-	Reduced	6	2437	1	18.72	19.50	1.197	97.59	1.025	0.09	0.860	1.055
26	WLAN2.4GHz	802.11b 1Mbps	Back	5mm	-	Reduced	1	2412	1	17.69	19.50	1.517	97.59	1.025	0.02	0.856	1.331
	WLAN2.4GHz	802.11b 1Mbps	Back	5mm	-	Reduced	1	2412	2	17.69	19.50	1.517	97.59	1.025	0.08	0.836	1.300
	WLAN2.4GHz	802.11b 1Mbps	Back	5mm	-	Reduced	11	2462	1	17.57	19.50	1.560	97.59	1.025	0.06	0.821	1.312
	WLAN2.4GHz	802.11b 1Mbps	Back	5mm	Headset 1	Reduced	1	2412	1	17.69	19.50	1.517	97.59	1.025	0.03	0.755	1.174
	WLAN2.4GHz	802.11b 1Mbps	Back	5mm	Headset 2	Reduced	1	2412	1	17.69	19.50	1.517	97.59	1.025	0.06	0.748	1.163
	WLAN2.4GHz	802.11g 6Mbps	Back	5mm	-	Reduced	6	2437	1	18.92	19.50	1.143	87.44	1.144	0.05	0.820	1.072
	WLAN2.4GHz	802.11b 1Mbps	Front	14mm	-	Full	6	2437	1	19.23	20.50	1.340	97.59	1.025	-0.11	0.113	0.155
	WLAN2.4GHz	802.11b 1Mbps	Back	21mm	-	Full	1	2412	1	19.24	20.50	1.337	97.59	1.025	0.08	0.069	0.095
WLAN5GHz																	
	WLAN5GHz	802.11a 6Mbps	Front	5mm	-	Reduced	40	5200	1	13.75	15.00	1.333	89.52	1.117	0.13	0.209	0.311
27	WLAN5GHz	802.11a 6Mbps	Back	5mm	-	Reduced	40	5200	1	13.75	15.00	1.333	89.52	1.117	0.04	0.772	1.150
	WLAN5GHz	802.11a 6Mbps	Back	5mm	-	Reduced	40	5200	2	13.75	15.00	1.333	89.52	1.117	0.06	0.741	1.103
	WLAN5GHz	802.11a 6Mbps	Back	5mm	-	Reduced	44	5220	1	13.16	15.00	1.527	89.52	1.117	0.03	0.586	1.000
	WLAN5GHz	802.11a 6Mbps	Front	14mm	-	Full	40	5200	1	18.09	19.50	1.383	89.52	1.117	0.13	0.087	0.134
	WLAN5GHz	802.11a 6Mbps	Back	21mm	-	Full	40	5200	1	18.09	19.50	1.383	89.52	1.117	0.04	0.258	0.399
	WLAN5GHz	802.11a 6Mbps	Front	5mm	-	Reduced	64	5320	1	12.64	14.50	1.534	89.52	1.117	0.14	0.109	0.187
28	WLAN5GHz	802.11a 6Mbps	Back	5mm	-	Reduced	64	5320	1	12.64	14.50	1.534	89.52	1.117	0.07	0.543	0.931
	WLAN5GHz	802.11a 6Mbps	Back	5mm	-	Reduced	60	5300	1	12.61	14.50	1.545	89.52	1.117	0.06	0.521	0.899
	WLAN5GHz	802.11a 6Mbps	Front	14mm	-	Full	64	5320	1	18.29	19.50	1.321	89.52	1.117	0.1	0.095	0.140
	WLAN5GHz	802.11a 6Mbps	Back	21mm	-	Full	64	5320	1	18.29	19.50	1.321	89.52	1.117	0.02	0.286	0.422
	WLAN5GHz	802.11a 6Mbps	Front	5mm	-	Reduced	116	5580	1	15.33	16.50	1.309	89.52	1.117	-0.13	0.397	0.581
	WLAN5GHz	802.11a 6Mbps	Back	5mm	-	Reduced	116	5580	1	15.33	16.50	1.309	89.52	1.117	0.09	0.567	0.829
29	WLAN5GHz	802.11a 6Mbps	Back	5mm	-	Reduced	100	5500	1	15.27	16.50	1.327	89.52	1.117	0.05	0.702	1.041
	WLAN5GHz	802.11a 6Mbps	Front	14mm	-	Full	116	5580	1	18.35	19.50	1.303	89.52	1.117	-0.13	0.145	0.211
	WLAN5GHz	802.11a 6Mbps	Back	21mm	-	Full	100	5500	1	18.34	19.50	1.306	89.52	1.117	0.05	0.197	0.287
	WLAN5GHz	802.11a 6Mbps	Front	5mm	-	Reduced	149	5745	1	13.21	14.50	1.345	89.52	1.117	0.18	0.121	0.182
	WLAN5GHz	802.11a 6Mbps	Back	5mm	-	Reduced	149	5745	1	13.21	14.50	1.345	89.52	1.117	0.08	0.595	0.894
30	WLAN5GHz	802.11a 6Mbps	Back	5mm	-	Reduced	157	5785	1	12.98	14.50	1.419	89.52	1.117	0.14	0.656	1.040
	WLAN5GHz	802.11a 6Mbps	Front	14mm	-	Full	149	5745	1	18.02	19.50	1.406	89.52	1.117	0.18	0.088	0.138
	WLAN5GHz	802.11a 6Mbps	Back	21mm	-	Full	157	5785	1	17.99	19.50	1.416	89.52	1.117	0.14	0.490	0.775



15.4 Product Specific SAR

Plot No.	Band	BW (MHz)	Modulation	RB Size	RB offset	Test Position	Gap (mm)	Power State	Ch.	Freq. (MHz)	Sample	Average Power (dBm)	Tune-Up Limit (dBm)	Tune-up Scaling Factor	Duty Cycle %	Duty Cycle Scaling Factor	Power Drift (dB)	Measured 10g SAR (W/kg)	Reported 10g SAR (W/kg)
2600MHz																			
	LTE Band 7	20M	QPSK	1	0	Front	0mm	DSIS	21350	2560	1	18.28	19.00	1.180	-	-	0.07	1.670	1.971
	LTE Band 7	20M	QPSK	1	0	Back	0mm	DSIS	21350	2560	1	18.28	19.00	1.180	-	-	-0.01	2.670	3.151
31	LTE Band 7	20M	QPSK	1	49	Back	0mm	DSIS	20850	2510	1	17.51	19.00	1.409	-	-	-0.13	2.390	3.368
	LTE Band 7	20M	QPSK	1	49	Back	0mm	DSIS	21100	2535	1	17.72	19.00	1.343	-	-	-0.04	2.450	3.290
	LTE Band 7	20M	QPSK	1	0	Bottom Side	0mm	DSIS	21350	2560	1	18.28	19.00	1.180	-	-	0.19	2.008	2.370
	LTE Band 7	20M	QPSK	1	49	Bottom Side	0mm	DSIS	20850	2510	1	17.51	19.00	1.409	-	-	0.02	1.770	2.494
	LTE Band 7	20M	QPSK	1	49	Bottom Side	0mm	DSIS	21100	2535	1	17.72	19.00	1.343	-	-	0.08	1.660	2.229
	LTE Band 7	20M	QPSK	1	49	Front	20mm	DSI4	21100	2535	1	23.41	24.00	1.146	-	-	-0.19	0.225	0.258
	LTE Band 7	20M	QPSK	1	49	Back	26mm	DSI4	20850	2510	1	23.10	24.00	1.230	-	-	-0.14	0.454	0.559
	LTE Band 7	20M	QPSK	1	49	Bottom Side	27mm	DSI4	20850	2510	1	23.10	24.00	1.230	-	-	0.16	0.531	0.653
	LTE Band 7	20M	QPSK	50	0	Front	0mm	DSIS	21350	2560	1	17.27	18.00	1.183	-	-	-0.11	1.250	1.479
	LTE Band 7	20M	QPSK	50	0	Back	0mm	DSIS	21350	2560	1	17.27	18.00	1.183	-	-	-0.17	2.040	2.413
	LTE Band 7	20M	QPSK	50	24	Back	0mm	DSIS	20850	2510	1	16.69	18.00	1.352	-	-	-0.1	1.960	2.650
	LTE Band 7	20M	QPSK	50	24	Back	0mm	DSIS	21100	2535	1	16.90	18.00	1.288	-	-	-0.12	1.950	2.512
	LTE Band 7	20M	QPSK	50	0	Bottom Side	0mm	DSIS	21350	2560	1	17.27	18.00	1.183	-	-	-0.09	1.700	2.011
	LTE Band 7	20M	QPSK	50	24	Bottom Side	0mm	DSIS	20850	2510	1	16.69	18.00	1.352	-	-	-0.1	1.510	2.042
	LTE Band 7	20M	QPSK	50	24	Bottom Side	0mm	DSIS	21100	2535	1	16.90	18.00	1.288	-	-	-0.12	1.410	1.816
	LTE Band 7	20M	QPSK	100	0	Back	0mm	DSIS	21100	2535	1	16.90	18.00	1.288	-	-	0.05	1.510	1.945
	LTE Band 7	20M	QPSK	100	0	Bottom Side	0mm	DSIS	21100	2535	1	16.90	18.00	1.288	-	-	0.01	1.660	2.138
	LTE Band 41	20M	QPSK	1	49	Front	0mm	DSIS	40620	2593	1	19.42	20.50	1.282	62.9	1.006	0.09	1.110	1.432
	LTE Band 41	20M	QPSK	1	49	Back	0mm	DSIS	40620	2593	1	19.42	20.50	1.282	62.9	1.006	0.17	2.040	2.632
	LTE Band 41	20M	QPSK	1	49	Back	0mm	DSIS	39750	2506	1	19.28	20.50	1.324	62.9	1.006	-0.08	2.130	2.838
32	LTE Band 41	20M	QPSK	1	49	Back	0mm	DSIS	40185	2549.5	1	19.37	20.50	1.297	62.9	1.006	-0.1	2.610	3.406
	LTE Band 41	20M	QPSK	1	49	Back	0mm	DSIS	40185	2549.5	2	19.37	20.50	1.297	62.9	1.006	0.11	2.240	2.923
	LTE Band 41	20M	QPSK	1	49	Back	0mm	DSIS	41055	2636.5	1	19.09	20.50	1.384	62.9	1.006	0.07	1.250	1.740
	LTE Band 41	20M	QPSK	1	49	Back	0mm	DSIS	41490	2680	1	18.94	20.50	1.432	62.9	1.006	-0.05	1.390	2.003
	LTE Band 41	20M	QPSK	1	49	Bottom Side	0mm	DSIS	40620	2593	1	19.42	20.50	1.282	62.9	1.006	-0.11	1.470	1.896
	LTE Band 41	20M	QPSK	1	49	Bottom Side	0mm	DSIS	39750	2506	1	19.28	20.50	1.324	62.9	1.006	-0.08	1.120	1.492
	LTE Band 41	20M	QPSK	1	49	Bottom Side	0mm	DSIS	40185	2549.5	1	19.37	20.50	1.297	62.9	1.006	-0.1	1.400	1.827
	LTE Band 41	20M	QPSK	1	49	Bottom Side	0mm	DSIS	41055	2636.5	1	19.09	20.50	1.384	62.9	1.006	0.07	1.310	1.823
	LTE Band 41	20M	QPSK	1	49	Bottom Side	0mm	DSIS	41490	2680	1	18.94	20.50	1.432	62.9	1.006	-0.05	1.440	2.075
	LTE Band 41	20M	QPSK	1	49	Front	20mm	DSI4	40620	2593	1	23.01	24.00	1.256	62.9	1.006	0.05	0.123	0.155
	LTE Band 41	20M	QPSK	1	49	Back	26mm	DSI4	40185	2549.5	1	22.99	24.00	1.262	62.9	1.006	-0.07	0.125	0.159
	LTE Band 41	20M	QPSK	1	49	Bottom Side	27mm	DSI4	41490	2680	1	22.63	24.00	1.371	62.9	1.006	-0.01	0.191	0.263
	LTE Band 41	20M	QPSK	50	24	Front	0mm	DSIS	40620	2593	1	18.79	19.50	1.178	62.9	1.006	-0.04	0.925	1.096
	LTE Band 41	20M	QPSK	50	24	Back	0mm	DSIS	40620	2593	1	18.79	19.50	1.178	62.9	1.006	0.06	1.650	1.955
	LTE Band 41	20M	QPSK	50	24	Back	0mm	DSIS	39750	2506	1	18.73	19.50	1.194	62.9	1.006	-0.18	1.720	2.066
	LTE Band 41	20M	QPSK	50	24	Back	0mm	DSIS	40185	2549.5	1	18.72	19.50	1.197	62.9	1.006	-0.18	1.720	2.071
	LTE Band 41	20M	QPSK	50	24	Back	0mm	DSIS	41055	2636.5	1	18.53	19.50	1.250	62.9	1.006	0.18	1.090	1.371
	LTE Band 41	20M	QPSK	50	24	Back	0mm	DSIS	41490	2680	1	18.69	19.50	1.205	62.9	1.006	0.16	1.220	1.479
	LTE Band 41	20M	QPSK	50	24	Bottom Side	0mm	DSIS	40620	2593	1	18.79	19.50	1.178	62.9	1.006	-0.05	1.100	1.303
	LTE Band 41	20M	QPSK	100	0	Back	0mm	DSIS	40620	2593	1	18.77	19.50	1.183	62.9	1.006	0.01	1.590	1.892
	LTE Band 41	20M	QPSK	100	0	Bottom Side	0mm	DSIS	40620	2593	1	18.77	19.50	1.183	62.9	1.006	0.01	1.020	1.214



Plot No.	Band	Mode	Test Position	Gap (mm)	Antenna	Power State	Ch.	Freq. (MHz)	Sample	Average Power (dBm)	Tune-Up Limit (dBm)	Tune-up Scaling Factor	Duty Cycle %	Duty Cycle Scaling Factor	Power Drift (dB)	Measured 10g SAR (W/kg)	Reported 10g SAR (W/kg)
2450MHz																	
33	WLAN2.4GHz	802.11b 1Mbps	Back	0mm	Ant 3	Full Power	1	2412	1	19.24	20.50	1.337	97.59	1.025	0.07	1.270	1.740
WLAN5GHz																	
	WLAN5.2GHz	802.11a 6Mbps	Back	0mm	Ant 3	Full Power	40	5200	1	18.09	19.50	1.383	89.52	1.117	-0.11	0.928	1.434
	WLAN5.2GHz	802.11a 6Mbps	Right Side	0mm	Ant 3	Full Power	40	5200	1	18.09	19.50	1.383	89.52	1.117	0.04	1.300	2.009
34	WLAN5.2GHz	802.11a 6Mbps	Right Side	0mm	Ant 3	Full Power	44	5220	1	17.79	19.50	1.482	89.52	1.117	0.07	1.520	2.517
	WLAN5.3GHz	802.11a 6Mbps	Front	0mm	Ant 3	Full Power	64	5320	1	18.29	19.50	1.321	89.52	1.117	-0.15	0.318	0.469
	WLAN5.3GHz	802.11a 6Mbps	Back	0mm	Ant 3	Full Power	64	5320	1	18.29	19.50	1.321	89.52	1.117	-0.08	1.030	1.520
	WLAN5.3GHz	802.11a 6Mbps	Right Side	0mm	Ant 3	Full Power	64	5320	1	18.29	19.50	1.321	89.52	1.117	-0.07	1.530	2.258
	WLAN5.3GHz	802.11a 6Mbps	Top Side	0mm	Ant 3	Full Power	64	5320	1	18.29	19.50	1.321	89.52	1.117	-0.01	0.392	0.578
35	WLAN5.3GHz	802.11a 6Mbps	Right Side	0mm	Ant 3	Full Power	60	5300	1	17.82	19.50	1.472	89.52	1.117	0.02	1.540	2.532
	WLAN5.3GHz	802.11a 6Mbps	Right Side	0mm	Ant 3	Full Power	60	5300	2	17.82	19.50	1.472	89.52	1.117	-0.04	1.510	2.483
	WLAN5.5GHz	802.11a 6Mbps	Front	0mm	Ant 3	Full Power	116	5580	1	18.35	19.50	1.303	89.52	1.117	-0.09	0.419	0.610
	WLAN5.5GHz	802.11a 6Mbps	Back	0mm	Ant 3	Full Power	116	5580	1	18.35	19.50	1.303	89.52	1.117	-0.02	1.130	1.645
36	WLAN5.5GHz	802.11a 6Mbps	Right Side	0mm	Ant 3	Full Power	116	5580	1	18.35	19.50	1.303	89.52	1.117	-0.05	1.160	1.688
	WLAN5.5GHz	802.11a 6Mbps	Top Side	0mm	Ant 3	Full Power	116	5580	1	18.35	19.50	1.303	89.52	1.117	0.11	0.420	0.611
	WLAN5.8GHz	802.11a 6Mbps	Back	0mm	Ant 3	Full Power	149	5745	1	18.02	19.50	1.406	89.52	1.117	-0.07	1.370	2.152
	WLAN5.8GHz	802.11a 6Mbps	Back	0mm	Ant 3	Full Power	157	5785	1	17.99	19.50	1.416	89.52	1.117	0.05	1.050	1.661
37	WLAN5.8GHz	802.11a 6Mbps	Right Side	0mm	Ant 3	Full Power	149	5745	1	18.02	19.50	1.406	89.52	1.117	-0.08	1.410	2.214
	WLAN5.8GHz	802.11a 6Mbps	Right Side	0mm	Ant 3	Full Power	157	5785	1	17.99	19.50	1.416	89.52	1.117	0.08	1.110	1.755

15.5 Repeated SAR Measurement

<1g>

Plot No.	Band	BW (MHz)	Modulation	RB Size	RB offset	Mode	Test Position	Gap (mm)	Power State	Ch.	Freq. (MHz)	Sample	Average Power (dBm)	Tune-Up Limit (dBm)	Tune-up Scaling Factor	Duty Cycle %	Duty Cycle Scaling Factor	Power Drift (dB)	Measured 1g SAR (W/kg)	Ratio	Reported 1g SAR (W/kg)
1st	WLAN2.4GHz	-	-	-	-	802.11b 1Mbps	Left Cheek	0mm	Reduced	1	2412	1	15.75	17.50	1.496	97.59	1.025	-0.09	0.950	1	1.311
2nd	WLAN2.4GHz	-	-	-	-	802.11b 1Mbps	Left Cheek	0mm	Reduced	6	2437	1	16.21	17.50	1.346	97.59	1.025	-0.09	0.910	1.044	1.255
1st	GSM850	-	-	-	-	GPRS (2 Tx slots)	Back	5mm	DSI3	189	836.4	1	30.75	31.50	1.189	-	-	-0.01	0.961	1	1.142
2nd	GSM850	-	-	-	-	GPRS (2 Tx slots)	Back	5mm	DSI3	189	836.4	1	30.75	31.50	1.189	-	-	0.06	0.942	1.020	1.120
1st	LTE Band 7	20M	QPSK	1	0	-	Bottom Side	5mm	DSI6	21350	2560	1	14.31	15.00	1.172	-	-	-0.13	1.160	1	1.360
2nd	LTE Band 7	20M	QPSK	1	0	-	Bottom Side	5mm	DSI6	21350	2560	1	14.31	15.00	1.172	-	-	0.03	1.080	1.074	1.266

<10g>

Plot No.	Band	BW (MHz)	Modulation	RB Size	RB offset	Test Position	Gap (mm)	Power State	Ch.	Freq. (MHz)	Sample	Average Power (dBm)	Tune-Up Limit (dBm)	Tune-up Scaling Factor	Duty Cycle %	Duty Cycle Scaling Factor	Power Drift (dB)	Measured 10g SAR (W/kg)	Ratio	Reported 10g SAR (W/kg)
	LTE Band 7	20M	QPSK	1	49	Back	0mm	DSI5	20850	2510	1	17.51	19.00	1.409	-	-	-0.01	2.670	1	3.151
	LTE Band 7	20M	QPSK	1	0	Back	0mm	DSI5	21350	2560	1	18.28	19.00	1.180	-	-	0.06	2.580	1.034	3.045

General Note:

1. Per KDB 865664 D01v01r04, for each frequency band, repeated SAR measurement is required only when the measured SAR is $\geq 0.8\text{W/kg}$.
2. Per KDB 865664 D01v01r04, if the ratio among the repeated measurement is ≤ 1.2 and the measured SAR $< 1.45\text{W/kg}$, only one repeated measurement is required.
3. Per KDB 865664 D01v01r04, if the extremity repeated SAR is necessary, the same procedures should be adapted for measurements according to extremity and occupational exposure limits by applying a factor of 2.5 for extremity exposure and a factor of 5 for occupational exposure to the corresponding SAR thresholds.
4. The ratio is the difference in percentage between original and repeated *measured SAR*.
5. All measurement SAR result is scaled-up to account for tune-up tolerance and is compliant.

16. Simultaneous Transmission Analysis

No.	Simultaneous Transmission Configurations	Portable Handset			
		Head	Body-worn	Hotspot	Product specific 10g SAR
1.	WWAN + WLAN2.4GHz	Yes	Yes	Yes	Yes
2.	WWAN + WLAN5GHz	Yes	Yes	Yes	Yes
3.	WWAN + Bluetooth	Yes	Yes	Yes	Yes
4.	WWAN + WLAN2.4GHz+NFC				Yes
5.	WWAN + WLAN5GHz+NFC				Yes
6.	WWAN + Bluetooth+NFC				Yes

General Note:

1. This device supports VoIP in GPRS, EGPRS, WCDMA and LTE (e.g. for 3rd-party VoIP), LTE supports VoLTE operation.
2. EUT will choose each GSM, WCDMA and LTE according to the network signal condition; therefore, they will not operate simultaneously at any moment.
3. This device 2.4GHz WLAN support hotspot operation and Bluetooth support tethering applications.
4. This device 5.2GHz WLAN/5.8GHz WLAN support hotspot operation, and 5.2GHz WLAN/5.8GHz WLAN supports WLAN Direct (GC/GO), and 5.3GHz / 5.5GHz supports WLAN Direct (GC only).
5. The worst case 5 GHz WLAN SAR for each configuration was used for SAR summation.
6. WLAN 2.4GHz and Bluetooth share the same antenna so can't transmit simultaneously.
7. According to the EUT characteristic, WLAN 5GHz and Bluetooth can't transmit simultaneously.
8. According to the EUT characteristic, WLAN 5GHz and WLAN 2.4GHz can't transmit simultaneously.
9. NFC can transmit simultaneously with other Radios in extremity exposure condition.
10. For Headset SAR and non-Headset SAR always chose higher SAR to do co-located analysis.
11. For distance SAR and non-distance SAR at extremity exposure conditions always chose higher SAR to do co-located analysis.
12. The maximum SAR summation is calculated based on the same configuration and test position.
13. Per KDB 447498 D01v06, simultaneous transmission SAR is compliant if,
 - i) 1g Scalar SAR summation < 1.6W/kg and 10g Scalar SAR summation < 4.0W/kg.
 - ii) $SPLSR = (SAR1 + SAR2)^{1.5} / (\text{min. separation distance, mm})$, and the peak separation distance is determined from the square root of $[(x1-x2)^2 + (y1-y2)^2 + (z1-z2)^2]$, where (x1, y1, z1) and (x2, y2, z2) are the coordinates of the extrapolated peak SAR locations in the zoom scan.
 - iii) If $SPLSR \leq 0.04$ for 1g SAR and $SPLSR \leq 0.10$ for 10g SAR, simultaneously transmission SAR measurement is not necessary.
 - iv) Simultaneously transmission SAR measurement, and the reported multi-band 1g SAR < 1.6W/kg and 10g SAR < 4.0W/kg.
 - v) The SPLSR calculated results please refer to section 16.5.



16.1 Head Exposure Conditions

WWAN Band	Exposure Position	1	5	12	17	1+5	1+12	1+17	SPLSR
		WWAN 1g SAR (W/kg)	WLAN2.4GHz 1g SAR (W/kg)	WLAN5GHz 1g SAR (W/kg)	Bluetooth 1g SAR (W/kg)	Summed 1g SAR (W/kg)	Summed 1g SAR (W/kg)	Summed 1g SAR (W/kg)	
GSM850	Right Cheek	0.373	0.650	0.278	0.054	1.02	0.65	0.43	
	Right Tilted	0.228	0.680	0.245	0.049	0.91	0.47	0.28	
	Left Cheek	0.334	1.313	0.731	0.178	1.65	1.07	0.51	Case 1
	Left Tilted	0.201	0.923	0.409	0.123	1.12	0.61	0.32	
WCDMA V	Right Cheek	0.305	0.650	0.278	0.054	0.96	0.58	0.36	
	Right Tilted	0.204	0.680	0.245	0.049	0.88	0.45	0.25	
	Left Cheek	0.272	1.313	0.731	0.178	1.59	1.00	0.45	
	Left Tilted	0.196	0.923	0.409	0.123	1.12	0.61	0.32	
LTE Band 26	Right Cheek	0.309	0.650	0.278	0.054	0.96	0.59	0.36	
	Right Tilted	0.178	0.680	0.245	0.049	0.86	0.42	0.23	
	Left Cheek	0.271	1.313	0.731	0.178	1.58	1.00	0.45	
	Left Tilted	0.171	0.923	0.409	0.123	1.09	0.58	0.29	
LTE Band 7	Right Cheek	0.134	0.650	0.278	0.054	0.78	0.41	0.19	
	Right Tilted	0.052	0.680	0.245	0.049	0.73	0.30	0.10	
	Left Cheek	0.047	1.313	0.731	0.178	1.36	0.78	0.23	
	Left Tilted	0.045	0.923	0.409	0.123	0.97	0.45	0.17	
LTE Band 41	Right Cheek	0.058	0.650	0.278	0.054	0.71	0.34	0.11	
	Right Tilted	0.030	0.680	0.245	0.049	0.71	0.28	0.08	
	Left Cheek	0.028	1.313	0.731	0.178	1.34	0.76	0.21	
	Left Tilted	0.023	0.923	0.409	0.123	0.95	0.43	0.15	



16.2 Hotspot Exposure Conditions

WWAN Band	Exposure Position	1	5	12	17	1+5 Summed 1g SAR (W/kg)	1+12 Summed 1g SAR (W/kg)	1+17 Summed 1g SAR (W/kg)	SPLSR
		WWAN 1g SAR (W/kg)	WLAN2.4GHz 1g SAR (W/kg)	WLAN5GHz 1g SAR (W/kg)	Bluetooth 1g SAR (W/kg)				
GSM850	Front	0.636	0.704	0.311	0.052	1.34	0.95	0.69	
	Back	1.142	1.331	1.150	0.125	2.47	2.29	1.27	Case 2/3
	Left side	0.390				0.39	0.39	0.39	
	Right side	0.651	0.734	0.818	0.058	1.39	1.47	0.71	
	Top side		0.651	0.413	0.047	0.65	0.41	0.05	
	Bottom side	0.630				0.63	0.63	0.63	
WCDMA V	Front	0.789	0.704	0.311	0.052	1.49	1.10	0.84	
	Back	1.047	1.331	1.150	0.125	2.38	2.20	1.17	Case 4/5
	Left side	0.438				0.44	0.44	0.44	
	Right side	0.488	0.734	0.818	0.058	1.22	1.31	0.55	
	Top side		0.651	0.413	0.047	0.65	0.41	0.05	
	Bottom side	1.037				1.04	1.04	1.04	
LTE Band 26	Front	0.616	0.704	0.311	0.052	1.32	0.93	0.67	
	Back	1.037	1.331	1.150	0.125	2.37	2.19	1.16	Case 6/7
	Left side	0.294				0.29	0.29	0.29	
	Right side	0.351	0.734	0.818	0.058	1.09	1.17	0.41	
	Top side		0.651	0.413	0.047	0.65	0.41	0.05	
	Bottom side	0.538				0.54	0.54	0.54	
LTE Band 7	Front	0.372	0.704	0.311	0.052	1.08	0.68	0.42	
	Back	1.317	1.331	1.150	0.125	2.65	2.47	1.44	Case 8/9
	Left side	0.049				0.05	0.05	0.05	
	Right side	0.041	0.734	0.818	0.058	0.78	0.86	0.10	
	Top side		0.651	0.413	0.047	0.65	0.41	0.05	
	Bottom side	1.360				1.36	1.36	1.36	
LTE Band 41	Front	0.599	0.704	0.311	0.052	1.30	0.91	0.65	
	Back	1.249	1.331	1.150	0.125	2.58	2.40	1.37	Case 10/11
	Left side	0.062				0.06	0.06	0.06	
	Right side	0.047	0.734	0.818	0.058	0.78	0.87	0.11	
	Top side		0.651	0.413	0.047	0.65	0.41	0.05	
	Bottom side	1.326				1.33	1.33	1.33	

16.3 Body-Worn Accessory Exposure Conditions

WWAN Band	Exposure Position	1	5	12	17	1+5	1+12	1+17	SPLSR
		WWAN 1g SAR (W/kg)	WLAN2.4GHz 1g SAR (W/kg)	WLAN5GHz 1g SAR (W/kg)	Bluetooth 1g SAR (W/kg)	Summed 1g SAR (W/kg)	Summed 1g SAR (W/kg)	Summed 1g SAR (W/kg)	
GSM850	Front	0.636	0.704	0.581	0.052	1.34	1.22	0.69	
	Back	1.142	1.331	1.150	0.125	2.47	2.29	1.27	Case 2/12
WCDMA V	Front	0.789	0.704	0.581	0.052	1.49	1.37	0.84	
	Back	1.047	1.331	1.150	0.125	2.38	2.20	1.17	Case 4/13
LTE Band 26	Front	0.616	0.704	0.581	0.052	1.32	1.20	0.67	
	Back	1.037	1.331	1.150	0.125	2.37	2.19	1.16	Case 6/14
LTE Band 7	Front	0.372	0.704	0.581	0.052	1.08	0.95	0.42	
	Back	1.317	1.331	1.150	0.125	2.65	2.47	1.44	Case 8/15
LTE Band 41	Front	0.599	0.704	0.581	0.052	1.30	1.18	0.65	
	Back	1.249	1.331	1.150	0.125	2.58	2.40	1.37	Case 10/16

Sensor off

WWAN Band	Exposure Position	1	5	12	1+5	1+12	1+17	SPLSR
		WWAN 1g SAR (W/kg)	WLAN2.4GHz 1g SAR (W/kg)	WLAN5GHz 1g SAR (W/kg)	Summed 1g SAR (W/kg)	Summed 1g SAR (W/kg)	Summed 1g SAR (W/kg)	
LTE Band 7	Front	1.049	0.155	0.211	1.20	1.26	1.05	
	Back	1.099	0.095	0.775	1.19	1.87	1.10	Case 21
LTE Band 41	Front	0.665	0.155	0.211	0.82	0.88	0.67	
	Back	0.735	0.095	0.775	0.83	1.51	0.74	

16.4 Product Specific Exposure Conditions

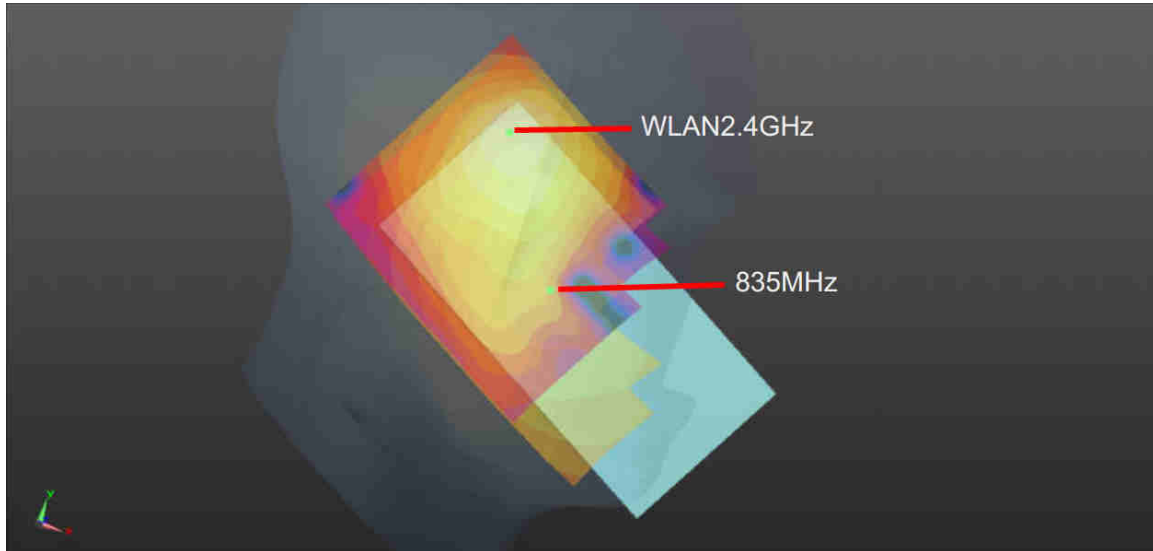
Note: 1. For Bluetooth Product specific 10g stand-alone SAR is not required for a transmitter or antenna, due to 1g hotspot SAR is <1.2W/kg.

WWAN Band	Exposure Position	1	5	12	13	1+5+13	1+12+13	SPLSR
		WWAN 10g SAR (W/kg)	WLAN2.4GHz 10g SAR (W/kg)	WLAN5GHz 10g SAR (W/kg)	NFC 10g SAR (W/kg)	Summed 10g SAR (W/kg)	Summed 10g SAR (W/kg)	
LTE Band 7	Front	1.971		0.610		1.97	2.58	
	Back	3.368	1.740	2.152	0.069	5.18	5.59	Case 17/18
	Left side					0.00	0.00	
	Right side			2.532		0.00	2.53	
	Top side			0.611		0.00	0.61	
	Bottom side	2.494				2.49	2.49	
LTE Band 41	Front	1.432		0.610		1.43	2.04	
	Back	3.406	1.740	2.152	0.069	5.22	5.63	Case 19/20
	Left side					0.00	0.00	
	Right side			2.532		0.00	2.53	
	Top side			0.611		0.00	0.61	
	Bottom side	2.075				2.08	2.08	

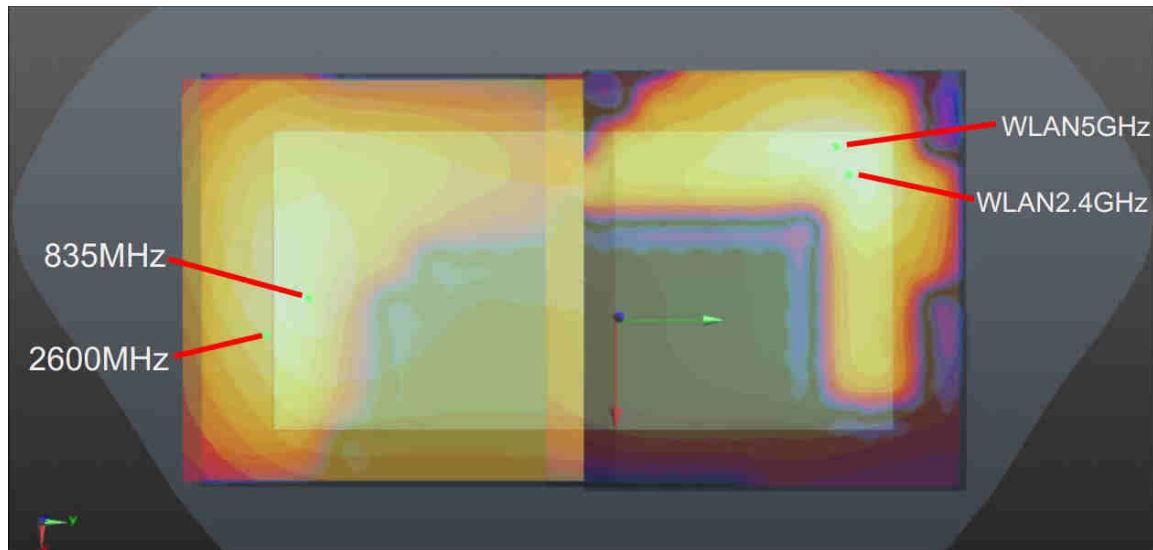
16.5 SPLSR Evaluation and Analysis

General Note:

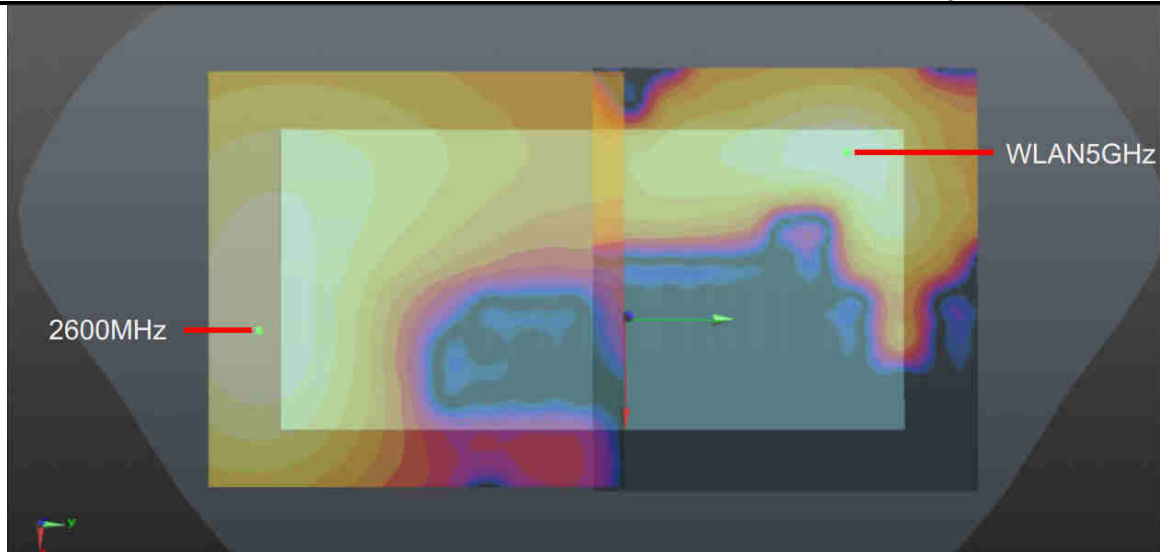
1. When standalone SAR is measured for both antennas in the pair, the peak location separation distance is computed by the square root of $[(x1-x2)^2 + (y1-y2)^2 + (z1-z2)^2]$, where $(x1, y1, z1)$ and $(x2, y2, z2)$ are the coordinates in the area scans or extrapolated peak SAR locations in the zoom scans, as appropriate.
2. $SPLSR = (SAR1 + SAR2)1.5 / (\text{min. separation distance, mm})$. If $SPLSR \leq 0.04$ for 1g SAR and $SPLSR \leq 0.10$ for 10g SAR, simultaneously transmission SAR measurement is not necessary.



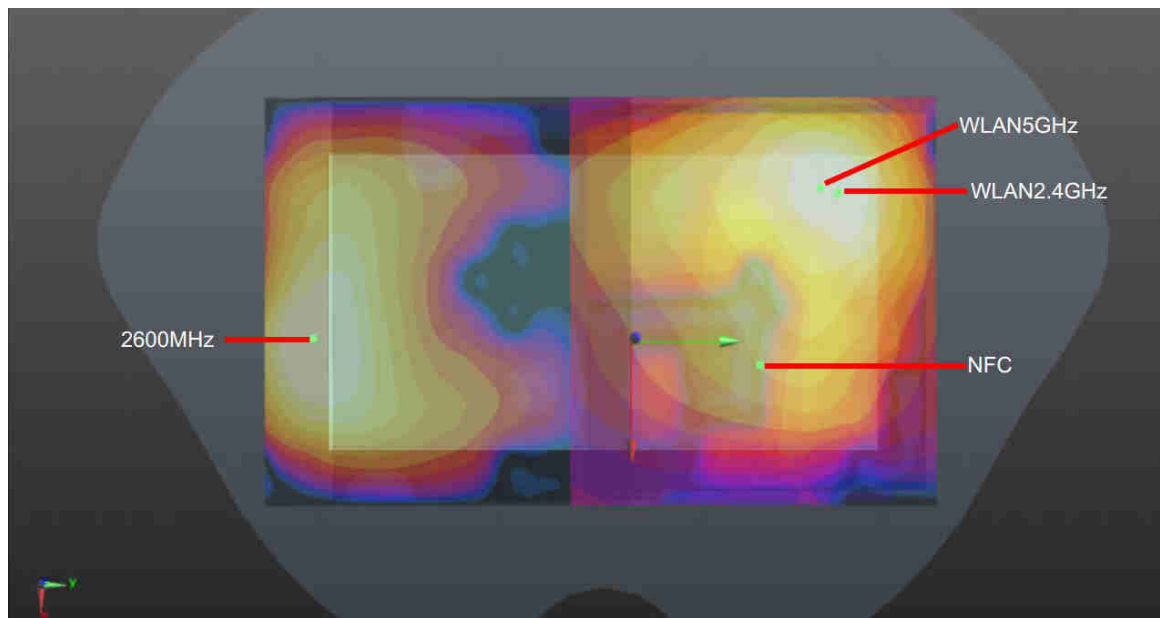
WWAN + WLAN 2.4GHz_Left Cheek



WWAN + WLAN 5GHz/2.4GHz Back_5mm



WWAN + WLAN 5GHz Back_21mm



WWAN + WLAN 5GHz/2.4GHz+NFC Back_0mm

**For Head**

Case 1	Band	Position	SAR (W/kg)	Gap (mm)	SAR peak location (m)			3D distance (mm)	Summed SAR (W/kg)	SPLSR Results	Simultaneous SAR
	GSM850	Left Cheek	0.334	0mm	0.0695	0.273	-0.174	67.1	1.65	0.03	Not required
	WLAN2.4GHz		1.313	0mm	0.0325	0.329	-0.174				

For Hotspot

Case 2	Band	Position	SAR (W/kg)	Gap (mm)	SAR peak location (m)			3D distance (mm)	Summed SAR (W/kg)	SPLSR Results	Simultaneous SAR
	GSM850	Back	1.142	5mm	-0.021	-0.080	-0.205	151.1	2.47	0.03	Not required
	WLAN2.4GHz		1.331	5mm	-0.045	0.069	-0.205				
Case 3	Band	Position	SAR (W/kg)	Gap (mm)	SAR peak location (m)			3D distance (mm)	Summed SAR (W/kg)	SPLSR Results	Simultaneous SAR
	GSM850	Back	1.142	5mm	-0.021	-0.080	-0.205	146.7	2.29	0.02	Not required
	WLAN5GHz		1.15	5mm	-0.053	0.063	-0.207				
Case 4	Band	Position	SAR (W/kg)	Gap (mm)	SAR peak location (m)			3D distance (mm)	Summed SAR (W/kg)	SPLSR Results	Simultaneous SAR
	WCDMA V	Back	1.047	5mm	-0.013	-0.074	-0.205	146.3	2.38	0.03	Not required
	WLAN2.4GHz		1.331	5mm	-0.045	0.069	-0.205				
Case 5	Band	Position	SAR (W/kg)	Gap (mm)	SAR peak location (m)			3D distance (mm)	Summed SAR (W/kg)	SPLSR Results	Simultaneous SAR
	WCDMA V	Back	1.047	5mm	-0.013	-0.074	-0.205	142.4	2.20	0.02	Not required
	WLAN5GHz		1.15	5mm	-0.053	0.063	-0.207				
Case 6	Band	Position	SAR (W/kg)	Gap (mm)	SAR peak location (m)			3D distance (mm)	Summed SAR (W/kg)	SPLSR Results	Simultaneous SAR
	LTE Band 26	Back	1.037	5mm	-0.017	-0.081	-0.205	152.3	2.37	0.02	Not required
	WLAN2.4GHz		1.331	5mm	-0.045	0.069	-0.205				
Case 7	Band	Position	SAR (W/kg)	Gap (mm)	SAR peak location (m)			3D distance (mm)	Summed SAR (W/kg)	SPLSR Results	Simultaneous SAR
	LTE Band 26	Back	1.037	5mm	-0.017	-0.081	-0.205	148.1	2.19	0.02	Not required
	WLAN5GHz		1.15	5mm	-0.053	0.063	-0.207				
Case 8	Band	Position	SAR (W/kg)	Gap (mm)	SAR peak location (m)			3D distance (mm)	Summed SAR (W/kg)	SPLSR Results	Simultaneous SAR
	LTE Band 7	Back	1.317	5mm	-0.003	-0.083	-0.205	158.1	2.65	0.03	Not required
	WLAN2.4GHz		1.331	5mm	-0.045	0.069	-0.205				
Case 9	Band	Position	SAR (W/kg)	Gap (mm)	SAR peak location (m)			3D distance (mm)	Summed SAR (W/kg)	SPLSR Results	Simultaneous SAR
	LTE Band 7	Back	1.317	5mm	-0.003	-0.083	-0.205	154.7	2.47	0.03	Not required
	WLAN5GHz		1.15	5mm	-0.053	0.063	-0.207				
Case 10	Band	Position	SAR (W/kg)	Gap (mm)	SAR peak location (m)			3D distance (mm)	Summed SAR (W/kg)	SPLSR Results	Simultaneous SAR
	LTE Band 41	Back	1.249	5mm	-0.001	-0.086	-0.205	160.7	2.58	0.03	Not required
	WLAN2.4GHz		1.331	5mm	-0.045	0.069	-0.205				
Case 11	Band	Position	SAR (W/kg)	Gap (mm)	SAR peak location (m)			3D distance (mm)	Summed SAR (W/kg)	SPLSR Results	Simultaneous SAR
	LTE Band 41	Back	1.249	5mm	-0.001	-0.086	-0.205	157.3	2.40	0.02	Not required
	WLAN5GHz		1.15	5mm	-0.053	0.063	-0.207				



For Body-worn

Case 12	Band	Position	SAR (W/kg)	Gap (mm)	SAR peak location (m)			3D distance (mm)	Summed SAR (W/kg)	SPLSR Results	Simultaneous SAR
					X	Y	Z				
	GSM850	Back	1.142	5mm	-0.021	-0.080	-0.205	151.3	2.29	0.02	Not required
	WLAN5GHz		1.15	5mm	-0.045	0.069	-0.207				
Case 13	Band	Position	SAR (W/kg)	Gap (mm)	SAR peak location (m)			3D distance (mm)	Summed SAR (W/kg)	SPLSR Results	Simultaneous SAR
					X	Y	Z				
	WCDMA V	Back	1.047	5mm	-0.013	-0.074	-0.205	146.4	2.20	0.02	Not required
	WLAN5GHz		1.15	5mm	-0.045	0.069	-0.207				
Case 14	Band	Position	SAR (W/kg)	Gap (mm)	SAR peak location (m)			3D distance (mm)	Summed SAR (W/kg)	SPLSR Results	Simultaneous SAR
					X	Y	Z				
	LTE Band 26	Back	1.037	5mm	-0.017	-0.081	-0.205	152.5	2.19	0.02	Not required
	WLAN5GHz		1.15	5mm	-0.045	0.069	-0.207				
Case 15	Band	Position	SAR (W/kg)	Gap (mm)	SAR peak location (m)			3D distance (mm)	Summed SAR (W/kg)	SPLSR Results	Simultaneous SAR
					X	Y	Z				
	LTE Band 7	Back	1.317	5mm	-0.003	-0.083	-0.205	158.2	2.47	0.02	Not required
	WLAN5GHz		1.15	5mm	-0.045	0.069	-0.207				
Case 16	Band	Position	SAR (W/kg)	Gap (mm)	SAR peak location (m)			3D distance (mm)	Summed SAR (W/kg)	SPLSR Results	Simultaneous SAR
					X	Y	Z				
	LTE Band 41	Back	1.249	5mm	-0.017	-0.081	-0.205	152.5	2.40	0.00	Not required
	WLAN5GHz		1.15	5mm	-0.045	0.069	-0.207				

Sensor off 1g

Case 21	Band	Position	SAR (W/kg)	Gap (mm)	SAR peak location (m)			3D distance (mm)	Summed SAR (W/kg)	SPLSR Results	Simultaneous SAR
					X	Y	Z				
	LTE Band 7	Back	1.099	21mm	-0.0038	-0.0868	-0.205	160.9	1.87	0.02	Not required
	WLAN5GHz		0.775	21mm	-0.051	0.067	-0.207				



Extremity

Case 17	Band	Position	SAR (W/kg)	Gap (mm)	SAR peak location (m)			3D distance (mm)	Summed SAR (W/kg)	SPLSR Results	Simultaneous SAR
					X	Y	Z				
Case 17	LTE Band 7	Back	3.368	0mm	-0.007	-0.086	-0.205	159.5	5.11	0.07	Not required
	WLAN2.4GHz		1.740	0mm	-0.046	0.069	-0.205				
	LTE Band 7	Back	3.368	0mm	-0.007	-0.086	-0.205	123.2	3.44	0.05	Not required
	NFC		0.069	0mm	0.015	0.032	-0.174				
	WLAN2.4GHz	Back	1.740	0mm	-0.046	0.069	-0.205	78.0	1.81	0.03	Not required
	NFC		0.069	0mm	0.015	0.032	-0.174				
Case 18	Band	Position	SAR (W/kg)	Gap (mm)	SAR peak location (m)			3D distance (mm)	Summed SAR (W/kg)	SPLSR Results	Simultaneous SAR
					X	Y	Z				
	LTE Band 7	Back	3.368	0mm	-0.007	-0.086	-0.205	156.0	5.52	0.08	Not required
	WLAN5GHz		2.152	0mm	-0.048	0.065	-0.207				
	LTE Band 7	Back	3.368	0mm	-0.007	-0.086	-0.205	123.2	3.44	0.05	Not required
	NFC		0.069	0mm	0.015	0.032	-0.174				
	WLAN5GHz	Back	2.152	0mm	-0.048	0.065	-0.207	78.6	2.22	0.04	Not required
	NFC		0.069	0mm	0.015	0.032	-0.174				
Case 19	Band	Position	SAR (W/kg)	Gap (mm)	SAR peak location (m)			3D distance (mm)	Summed SAR (W/kg)	SPLSR Results	Simultaneous SAR
					X	Y	Z				
	LTE Band 41	Back	3.406	0mm	-0.006	-0.086	-0.205	159.7	5.15	0.07	Not required
	WLAN2.4GHz		1.740	0mm	-0.046	0.069	-0.205				
	LTE Band 41	Back	3.406	0mm	-0.006	-0.086	-0.205	123.0	3.48	0.05	Not required
	NFC		0.069	0mm	0.015	0.032	-0.174				
	WLAN2.4GHz	Back	1.740	0mm	-0.046	0.069	-0.205	78.0	1.81	0.03	Not required
	NFC		0.069	0mm	0.015	0.032	-0.174				
Case 20	Band	Position	SAR (W/kg)	Gap (mm)	SAR peak location (m)			3D distance (mm)	Summed SAR (W/kg)	SPLSR Results	Simultaneous SAR
					X	Y	Z				
	LTE Band 41	Back	3.406	0mm	-0.006	-0.086	-0.205	156.3	5.56	0.08	Not required
	WLAN5GHz		2.152	0mm	-0.048	0.065	-0.207				
	LTE Band 41	Back	3.406	0mm	-0.006	-0.086	-0.205	123.0	3.48	0.05	Not required
	NFC		0.069	0mm	0.015	0.032	-0.174				
	WLAN5GHz	Back	2.152	0mm	-0.048	0.065	-0.207	78.6	2.22	0.04	Not required
	NFC		0.069	0mm	0.015	0.032	-0.174				

Test Engineer : Hank Huang, Kevin Xu, David Dai, Bin He

17. Uncertainty Assessment

Per KDB 865664 D01 SAR measurement 100MHz to 6GHz, when the highest measured 1-g SAR within a frequency band is < 1.5 W/kg and the measured 10-g SAR within a frequency band is < 3.75 W/kg. The expanded SAR measurement uncertainty must be $\leq 30\%$, for a confidence interval of $k = 2$. If these conditions are met, extensive SAR measurement uncertainty analysis described in IEEE Std 1528-2013 is not required in SAR reports submitted for equipment approval. For this device, the highest measured 1-g SAR is less 1.5W/kg and highest measured 10-g SAR is less 3.75W/kg. Therefore, the measurement uncertainty table is not required in this report.

18. References

- [1] FCC 47 CFR Part 2 "Frequency Allocations and Radio Treaty Matters; General Rules and Regulations"
- [2] ANSI/IEEE Std. C95.1-1992, "IEEE Standard for Safety Levels with Respect to Human Exposure to Radio Frequency Electromagnetic Fields, 3 kHz to 300 GHz", September 1992
- [3] IEEE Std. 1528-2013, "IEEE Recommended Practice for Determining the Peak Spatial-Average Specific Absorption Rate (SAR) in the Human Head from Wireless Communications Devices: Measurement Techniques", Sep 2013
- [4] SPEAG DASY System Handbook
- [5] FCC KDB 865664 D01 v01r04, "SAR Measurement Requirements for 100 MHz to 6 GHz", Aug 2015.
- [6] FCC KDB 865664 D02 v01r02, "RF Exposure Compliance Reporting and Documentation Considerations" Oct 2015.
- [7] FCC KDB 447498 D01 v06, "Mobile and Portable Device RF Exposure Procedures and Equipment Authorization Policies", Oct 2015
- [8] FCC KDB 648474 D04 v01r03, "SAR Evaluation Considerations for Wireless Handsets", Oct 2015.
- [9] FCC KDB 248227 D01 v02r02, "SAR Guidance for IEEE 802.11 (WiFi) Transmitters", Oct 2015.
- [10] FCC KDB 616217 D04 v01r02, "SAR Evaluation Considerations for Laptop, Notebook, Netbook and Tablet Computers", Oct 2015
- [11] FCC KDB 941225 D01 v03r01, "3G SAR MEAUREMENT PROCEDURES", Oct 2015
- [12] FCC KDB 941225 D05 v02r05, "SAR Evaluation Considerations for LTE Devices", Dec 2015
- [13] FCC KDB 941225 D06 v02r01, "SAR Evaluation Procedures for Portable Devices with Wireless Router Capabilities", Oct 2015.

-----THE END-----