

Keepsens·Type KP-CCXG700-DOOR Door Magnetic Sensor Product Specification

Tianjin Keepsens Information Technology Co., Ltd.

All rights reserved © Published in China by Tianjin Keepsens Information Technology Co., Ltd., all rights reserved.

Without the written consent of Tianjin Keepsens Information Technology Co., Ltd., no unit or individual is allowed to copy or reproduce part or all of the contents of this Manual, and disseminate it in any form.

Trademark Statement

KEEPSENS®, UNICORETECH, UNICORETEC, UNICOREIOT, BHCMIOT, CMIOT, , , 

are the trademarks or registered trademarks of Tianjin Keepsens Information Technology Co., Ltd. and its subsidiaries. Other trademarks, product names, service names and company names presented in this manual and in the products described in this Manual shall be owned by their respective owners.

Disclaimer

This document is provided as a reference for users to select the suitable products of Tianjin Keepsens Information Technology Co., Ltd. and its subsidiaries (hereinafter referred to as "Keepsens Information") based on their purposes. This document may contain predictive and dynamic information, including but not limited to information about future product series, new technologies, services provided, etc. Due to many uncertainties in practice, actual results may be quite different from the predictive information. The information in this document is for reference only, does not constitute any offer or acceptance. The Purchaser shall be solely responsible for the selection and use of the products and services of Keepsens Information described herein, and Keepsens Information shall not assume the Purchaser's responsibility for the selection and use of the products and services described herein. Tianjin Keepsens Information Technology Co., Ltd. may modify the above information without prior notice.

Address: Building 9, No.399, Huixiang Road, Information Security Industry Park, Binhai High-tech Zone, Tianjin

Website: <http://www.keepsens.com/>

Consultation: 022-59183850 022-59183660

Post code: 300459

I. Product introduction

KP-CCXG700-DOOR Wireless Door Magnetic Sensor can detect whether the container door is opened or closed during driving, thus improving security and operational efficiency. Door Magnetic Sensor can report the events on opening and closing, thus improving the asset security of the owners of containers.



KP-CCXG700-DOOR Door Magnetic
Sensor

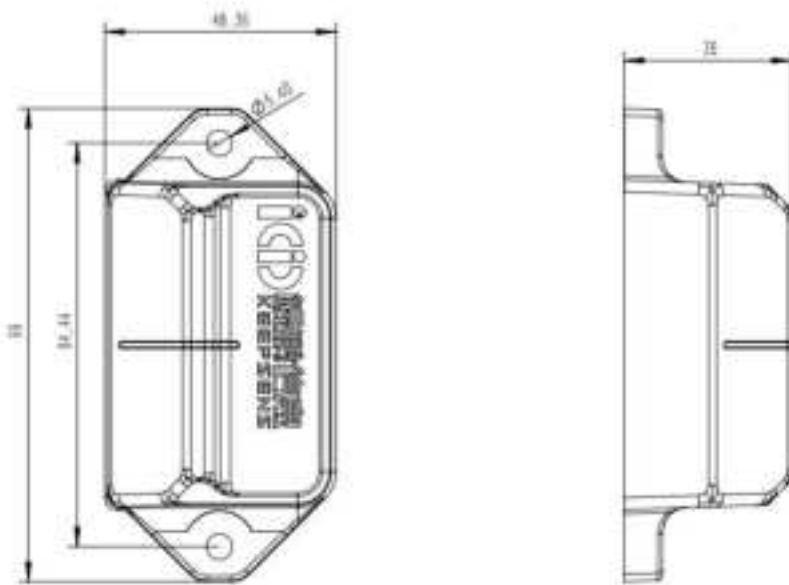
II. Product features

- Maximize the utilization and efficiency of containers
- Monitor retention billing
- Avoid theft and ensure cargo safety
- Improve customer satisfaction
- Fast and simple installation

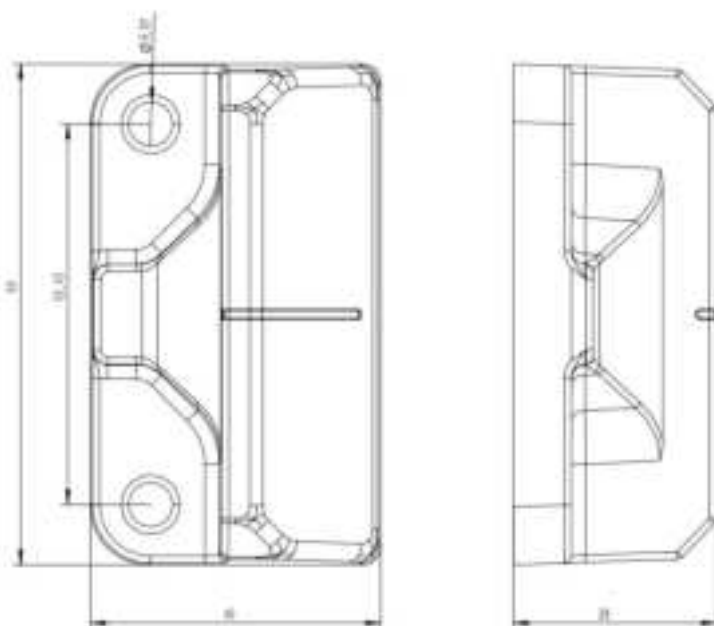
III. Product parameters

Item	Specification parameters	Remarks
Communication	Bluetooth 5.1	
Battery	Standby current	<10uA
	Working current	<5mA
	Battery voltage	3.6V
	Battery capacity	2700mAh
Built-in sensor	Battery voltage detection	0-4V
	Magnetic door contact	
Volume	100mm*50mm*30mm	
	70mm*40mm*30mm	
Weight	150g	
Working environment	Working temperature	- 40°C- +85°C
	Working humidity	5% - 95%

IV. Product structure chart



Structure Chart of Acquisition Part



Structure Chart of Magnet Part

Version information

Version No.	Issue date	Number of pages	Chapter or chart	Description of changes
1.0	2021.03	7		First release

Products of Keepsens Information

Chip: GJB RFID Tag Chip, ISO RFID Tag Chip, Temperature Sensing RFID Tag Chip;

Radio Frequency Identification (RFID): GJB/ISO/GB Fixed Reader, Handheld Reader, Card Sender, Channel Reader, Intelligent Control Cabinet;

Wide-area positioning: Sensor Module for Container Positioning, Sensor Module for Tray Positioning, Sensor Module for Standard Carrier Positioning;

Application system: Secret-related Carriers Management System, Asset Management System, Warehouse Management System, Wide-area Positioner Management System.....

Declaration of Conformity

Hereby, [Tianjin Keepsens Information Technology Co., Ltd.] declares that the radio equipment type [Door magnetic sensor, KP-CCXG700-DOOR] is in compliance with Directive 2014/53/EU.

The full text of the EU declaration of conformity is available at the following internet address:

<http://www.keepsens.com/>

RF exposure statement

RF exposure information: The Maximum Permissible Exposure (MPE) level has been calculated based on a distance of $d=20$ cm between the device and the human body. To maintain compliance with RF exposure requirement, use product that maintain a 20cm distance between the device and human body.

Operating frequency range: 2400-2483.5MHz max power -2dbm

Federal Communication Commission Interference Statement

This equipment has been tested and found to comply with the limits for a Class B digital device, pursuant to Part 15 of the FCC Rules. These limits are designed to provide reasonable protection against harmful interference in a residential installation. This equipment generates, uses and can radiate radio frequency energy and, if not installed and used in accordance with the instructions, may cause harmful interference to radio communications. However, there is no guarantee that interference will not occur in a particular installation. If this equipment does cause harmful interference to radio or television reception, which can be determined by turning the equipment off and on, the user is encouraged to try to correct the interference by one of the following measures:

- Reorient or relocate the receiving antenna.
- Increase the separation between the equipment and receiver.
- Connect the equipment into an outlet on a circuit different from that to which the receiver is connected.
- Consult the dealer or an experienced radio/TV technician for help.

FCC Caution:

Any changes or modifications not expressly approved by the party responsible for compliance could void the user's authority to operate this equipment.

This device complies with Part 15 of the FCC Rules. Operation is subject to the following two conditions:

- (1) This device may not cause harmful interference, and
- (2) This device must accept any interference received, including interference that may cause undesired operation.

FCC Radiation Exposure Statement:

This equipment complies with FCC radiation exposure limits set forth for an uncontrolled environment. This equipment should be installed and operated with minimum distance 20cm between the radiator & your body. This transmitter must not be co-located or operating in conjunction with any other antenna or transmitter.