

Appendix A-1 WIFI6E and PD Test Plots of System Verification

The plots for system verification with largest deviation for each WIFI6E system combination are shown as follows.

Measurement Report for Device

System Check_H6.5GHz_210408

Device under Test Properties

Model, Manufacturer	Dimensions [mm]	IMEI	DUT Type
Speag 6.5GHz System Valisation Kit	50.0 x 10.0 x 8.0	SN:1008	6.5GHzV2 Valisation Kit

Exposure Conditions

Phantom Section, TSL	Position, Test Distance [mm]	Band	Group, UID	Frequency [MHz], Channel Number	Conversion Factor	TSL Conductivity [S/m]	TSL Permittivity
Flat,	-	-	UID 0	6500.0,	5.65	6.21	33.8

Hardware Setup

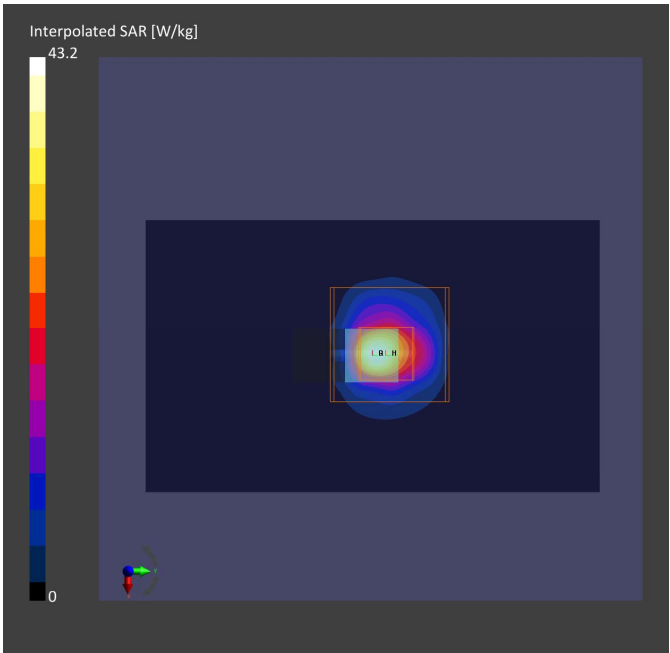
Phantom	TSL, Measured Date	Probe, Calibration Date	DAE, Calibration Date
ELI V5.0 (20deg probe tilt) - 1204	H50T72N2 , 2021-Apr-08	EX3DV4 - SN7555, 2020-09-28	DAE4 Sn1589, 2020-09-15

Scan Setup

	Area Scan	Zoom Scan
Grid Extents [mm]	51.0 x 85.0	22.0 x 22.0 x 22.0
Grid Steps [mm]	8.5 x 8.5	3.4 x 3.4 x 1.4
Sensor Surface [mm]	3.0	1.4

Measurement Results

	Area Scan	Zoom Scan
Date	2021-04-08	2021-04-08
psSAR1g [W/Kg]	24.8	30.9
psSAR10g [W/Kg]	5.21	5.69
Power Drift [dB]	0.02	-0.01
M2/M1 [%]		52.1
Dist 3dB Peak [mm]		4.8



Test Lab: Bureau Veritas ADT SAR/HAC/PD Teating Lab

Power Density Plot NO:

PD_System Check_30 GHz_2021.04.10

Device under Test Properties

Name, Manufacturer	Dimensions [mm]	IMEI	DUT Type
SPEAG,	100.0 x 100.0 x 100.0	SN: 1016	5G Verification Source 30 GHz

Exposure Conditions

Phantom Section	Position, Test Distance [mm]	Band	Group, UID	Frequency [MHz], Channel Number	Conversion Factor
5G Air	FRONT, 5.55	Validation band	CW,	30000.0,	1.0

Hardware Setup

Phantom	Medium	Probe, Calibration Date	DAE, Calibration Date
mmWave	--Air--	EUmmWV3 – SN9454_F1-78GHz, 2020-09-24	DAE4 Sn1590, 2020-09-15

Scan Setup

	5G Scan
Grid Extents [mm]	60.0 x 60.0
Grid Steps [lambda]	0.25 x 0.25
Sensor Surface [mm]	5.55

Measurement Results

	5G Scan
Date	2021-04-10
Avg. Area [cm²]	4.00
pS _{tot} avg [W/m²]	35.4
pS _n avg [W/m²]	34.9
E _{peak} [V/m]	129

