

ICON Tablet

Model:

MP22-Argon3-TV

MP22-Argon3-TV-OT

Directions

Meanings of icons:



Forbidding: forbid improper operations to avoid damaging the tablet.



Caution: cautions for operators to avoid potential damages.
Please note and remember.



Importance: important information, common notes, definitions, general knowledge and references, etc.

Other trademarks and trade name may be used in this manual to refer to either the entities claiming the marks and names or their products. The manufacture disclaims any proprietary interest in trademarks and trade names other than its own.

Information in this manual is subject to change without notice.

Reproduction in any manner whatsoever without the written permission from the manufacture is strictly forbidden.

Product images in this manual are for your reference only.

Contents

Directions.....	2
Safety Precautions.....	5
1 Know Your Tablet.....	7
2 Get to Know Your System.....	7
<i>2-1 Enter APPs Menu</i>	<i>10</i>
<i>2-2 Add screen shortcuts</i>	<i>10</i>
<i>2-3 Delete screen shortcuts/widgets.....</i>	<i>11</i>
<i>2-4 On-screen Keyboard</i>	<i>11</i>
3 System Settings	12
<i>3-1 Wireless & networks.....</i>	<i>12</i>
<i>3-2 Device.....</i>	<i>17</i>
<i>3-3 Personal</i>	<i>19</i>
<i>3-4 System.....</i>	<i>19</i>

4 Camera	20
5 Specifications.....	21
6 CE Mark	22
7 Assembly & Using.....	26

Safety Precautions


1. DO NOT expose the tablet to dirty or dusty environment. Keep the environment clean and dry.
2. DO NOT place or drop objects on the top of the tablet. DO NOT shove any foreign objects into the tablet. DO NOT cover the LCD Screen strongly.
3. DO NOT expose the tablet to strong magnetic or electrical fields; DO NOT place the floppy disk near or on the tablet, which may loss the data of the floppy disk.
4. DO NOT leave the tablet facing the sun as it can damage the LCD Screen, especially in the car.
5. DO NOT expose the tablet to or use near liquids, rain, or moisture.
6. DO NOT throw the tablet in municipal waste.

Check local regulations for disposal of electronic products.

8. DO NOT insert anything into the tablet that may result in short circuit or damage the circuit.
9. Power off the tablet, if you want to install or remove some external devices which are not support hot-plug.
10. DO NOT disassemble the tablet, only a certified service technician should perform repairs on your computer. Otherwise, problems may result and the manufacturer should not hold responsibility for the damage.

11.  This symbol indicates DC voltage

12. Device using temperature 40°C MAX.

13.  RECYCLING This product bears the selective sorting symbol for Waste electrical and electronic equipment (WEEE). This means that this product must be handled pursuant to European directive 2012/19/EU in order to be recycled or dismantled to minimize its impact on the environment. User has the choice to give his product to a competent

recycling organization or to the retailer when he buys an new electrical or electronic equipment.

14. For AC/DC Adapter, the socket-outlet shall be installed near the equipment and shall be easily accessible.

15. Any changes or modifications not expressly approved by the party responsible for compliance could void the user's authority to operate the equipment.

1 Know Your Tablet



Picture1-1 (MP22-Argon3-TV)



Picture1-2 (MP22-Argon3-TV-OT)

KEYS: connect to the console host through a cable, so that the host can control the volume or reset.

AUDIO JACK: connect to the console host through a cable to provide audio signal output.

2 Get to Know Your System

Connect to the power supply and then it will display the home screen as below picture

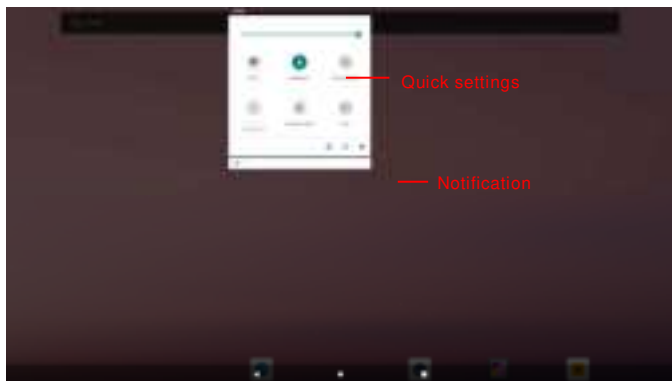


Picture2-1

Click on the screen for ten times, pause for 5 seconds and then do it again for ten times' clicks to enter the Setting privileged mode as below.



Picture 2-2



Picture 2-3

◀ : tap to return to the previous page.

○ : tap to enter Home screen.

□ : tap to open recent APPs list menu.

If it's your first time to use the tablet, the system will enter the guide menu. Please finish the initial setting following the instructions.

2-1 Enter APPs Menu

On the home page, slide the screen from bottom to top, the system will enter the APPs Menu as shown in picture 2-3



Picture2-4

2-2 Add screen shortcuts

On the home page, touch and hold the blank area to popup menu to change wallpaper;

Enter APPs Menu ,touch and hold an APPS icon to add it to the home screen.

2-3 Delete screen shortcuts/widgets

On the home screen, touch and hold the shortcut or widget to be deleted until the icon “✕” appears at the top middle of the home screen.

Drag the shortcuts to the remove icon to delete.

2-4On-screen Keyboard



Toggle letters & numbers

Space

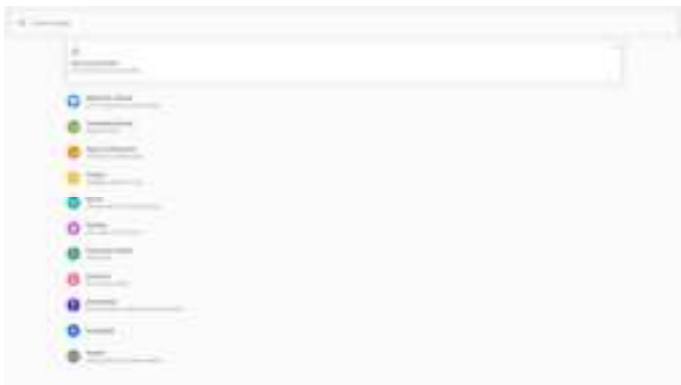
Picture 2-5

Go

Just touch a text field to open the on-screen keyboard;

Touch ▾ on the tool bar to close it.

3 System Settings




Picture 3-1

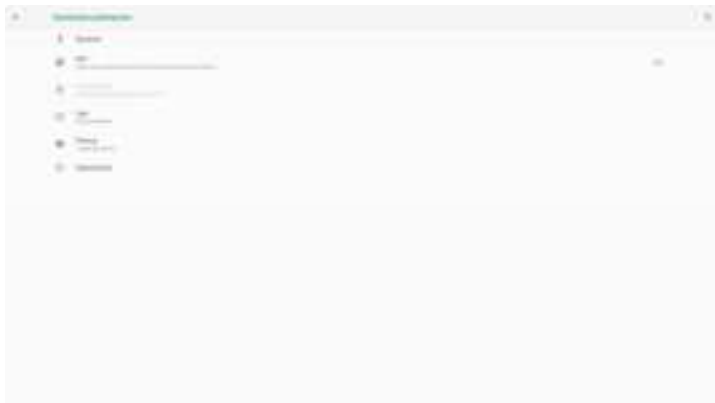
3-1 Wireless & networks

3-1-1 Wi-Fi

Touch the Wi-Fi switch behind of the Wi-Fi item to turn on the Wi-Fi function and then the system will auto-scan the available networks to display as shown in picture 3-2.

Select one network and input its password if necessary to connect.


Touch  to perform advanced Wi-Fi settings.

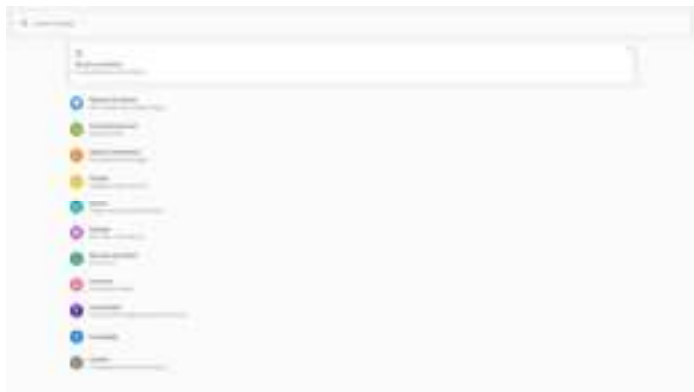


Picture 3-3

Touch the desired Bluetooth device to start pairing. Then according to the indications on both sides, users can complete the connection successfully in seconds.

After pairing, you can share files between the unit and the Bluetooth device.

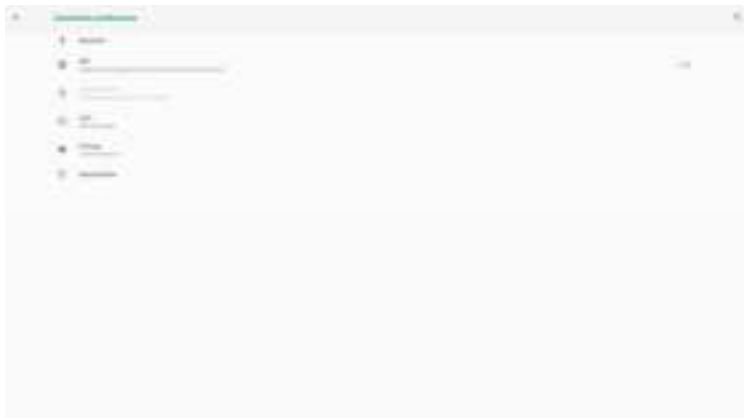
Touch  to perform advanced Bluetooth settings.



Picture 3-5



Picture 3-6



Picture 3-7

3-1-4 Data usage

Touch to see the data usage information.

3-1-5 More

The system supplies users more networks settings, such as Airplane mode, Tethering & portable hotspot, VPN and Network settings reset.

3-2 Device

3-2-1 Display

Set memory in 3 hours, 6 hours, 12 hours or 1 day and check the memory in the time period.

3-3 Personal

3-3-1 Location

To open or close location services.

3-3-2 Security

Security information of system settings.

3-3-3 Accounts

To add email accounts or google accounts.

3-3-4 Language & input

To choose the system language and open/close the Spell checker.

You can also set the keyboard & input methods.

3-3-5 Backup & reset

Reset the system to the factory states.

3-4 System

3-4-1 Date & time

Option is about the current system date & time setting. You can set the date and time, and their format of the tablet.

3-4-2 Accessibility

Look at what other accessibilities in the system or add some.

3-4-3 Developer options

To turn on/off the development settings. These settings are intended for development use only. They can cause your device and the applications on it to break or misbehave.

3-4-4 About tablet

The detailed information about the unit, including Status, Legal information, Model, Android version, Android security patch level, Kernel version, and Build number

4 Camera

Open: 

Take Pictures: 1. Aim the object.

2. Press  to take a picture.



Picture4-1

Notice:

1. Select video mode if you want to record videos.
2. All photos or videos taken are both stored in the photos and gallery.

5 Specifications

ICON part No.	420332/423569
ICON model	MP22-Argon3-TV /MP22-Argon3-TV-OT
Description	21.5 inch display tablet, with touch, and core board
OS	Android 9.0
CPU Manufacturer	MTK
CPU Model	MT8766A
CPU Core Model	Cortex A53 / Quad core
CPU Frequency	2.0GHz
DDR3	2GB
Mass Memory	32GB iNAND
Resolution	1920 (W) x1080(H)
Contrast	4000:1
WiFi	802.11ac/a/b/g/n
Bluetooth Version	5.0
Front Camera	2M pixels
Adapter	12V/2A (not included)

6 CE Mark

Compliance with the RE Directive

We, ICON Health & Fitness Inc.

Hereby, ICON Health & Fitness Inc. declares that the radio equipment
MP22-Argon3-TV-OT/MP22-Argon3-TV is In compliance with Directive
2014/53/EU

SW Version

Product SW Version: Model AOSP on avn_ref

Operating Temperature: 0°C ~40°C

Operations in the 5.15-5.35GHz band are restricted to indoor usage only in
following Countries:

	BE	BG	CZ	DK	DE	EE	IE
	EL	ES	FR	HR	IT	CY	LV
	LT	LU	HU	MT	NL	AT	PL
	PT	RO	SI	SK	FI	SE	UK

For AC/DC Adapter, the socket-outlet shall be installed near the equipment and shall be easily accessible

For FCC

RF EXPOSURE INFORMATION

The exposure standard for wireless device employs a unit of measurement known.

This device complies with FCC's radiation exposure limits set forth for an uncontrolled environment.

This equipment should be installed and operated with minimum distance 20cm between the radiator & your body.

FCC CAUTION

This device complies with part 15 of the FCC Rules. Operation is subject to the following two conditions: (1) This device may not cause harmful interference, and (2) this device must accept any interference received, including interference that may cause undesired operation

Note: This equipment has been tested and found to comply with the limits for a Class B digital device, pursuant to part 15 of the FCC Rules. These limits are designed to provide reasonable protection against harmful interference in a residential installation. This equipment generates, uses and can radiate radio frequency energy and, if not installed and used in accordance with the instructions, may cause harmful interference to radio communications. However,

there is no guarantee that interference will not occur in a particular installation. If this equipment does cause harmful interference to radio or television reception, which can be determined by turning the equipment off and on, the user is encouraged to try to correct the interference by one or more of the following measures:

- Reorient or relocate the receiving antenna.
- Increase the separation between the equipment and receiver.
- Connect the equipment into an outlet on a circuit different from that to which the receiver is connected.
- Consult the dealer or an experienced radio/TV technician for help.

Any Changes or modifications not expressly approved by the party responsible for compliance could void the user's authority to operate the equipment.
FCC 5150-5250 indoor use only statement in the manual

For IC:

The device for operation in the band 5150-5250MHz is only for indoor use reduce the potential for harmful interference to co-channel mobile satellite systems

Le dispositif destiné à être utilisé dans la bande 5150-5250 MHz est réservé à une utilisation en intérieur, ce qui réduit les interférences nuisibles potentielles avec les systèmes mobiles par satellite co-canal

This equipment complies with FCC/IC radiation exposure limits set forth for an uncontrolled environment. This equipment should be installed and operated with minimum distance 20cm between the radiator & your body

This device complies with Industry Canada's licence-exempt RSSs. Operation is subject to the following two conditions:

- (1) This device may not cause interference; and
- (2) This device must accept any interference, including interference that may cause undesired operation of the device

CNR d'Innovation, Sciences et Développement économique Canada applicables aux appareils radio exempts de licence. L'exploitation est autorisée aux deux conditions suivantes :

- 1) L'appareil ne doit pas produire de brouillage;
- 2) L'appareil doit accepter tout brouillage radioélectrique subi, même si le brouillage est susceptible d'en compromettre le fonctionnement.

7 Assembly & Using

- 1) Assemble module and shell , combine PCB and other component to be a console;
- 2) Assemble console and other components (Belt, motor, metals holder etc.) to be a treadmill, elliptical etc.
- 3) Using console to control the whole treadmill.



Picture7-1