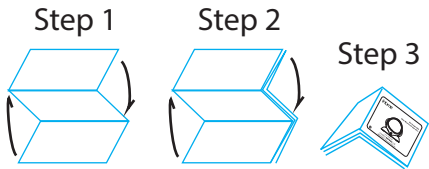


Ui-B66.MA IB (English)  
Printing Size: 186mm x 218mm  
Folded size: 93mm(W) x 73mm(H)  
Printing color: Black  
Dec 9, 2019  
80gsm2 (WF) paper, 1C + 1C



### Limited 90-Day Warranty Information

eKids, LLC, warrants this product to be free from defects in workmanship and materials, under normal use and conditions, for a period of 90 days from the date of original purchase.

Should this product fail to function in a satisfactory manner, it is best to first return it to the store where it was originally purchased. Should this fail to resolve the matter and service still be required by reason of any defect or malfunction during the warranty period, eKids will repair or, at its discretion, replace this product without charge. This decision is subject to verification of the defect or malfunction upon delivery of this product to the Factory Service Center authorized by Customer Service.

If service is required, please call Customer Service at 1-800-288-2792 to obtain a Return Authorization Number and shipping instructions.

#### Disclaimer of Warranty

NOTE: This warranty is valid only if the product is used for the purpose for which it was designed. It does not cover (i) products which have been damaged by negligence or willful actions, misuse or accident, or which have been modified or repaired by unauthorized persons; (ii) cracked or broken cabinets, or units damaged by excessive heat; (iii) damage to digital media players, CD's or tape cassettes (if applicable); (iv) the cost of shipping this product to the Factory Service Center and its return to the owner.

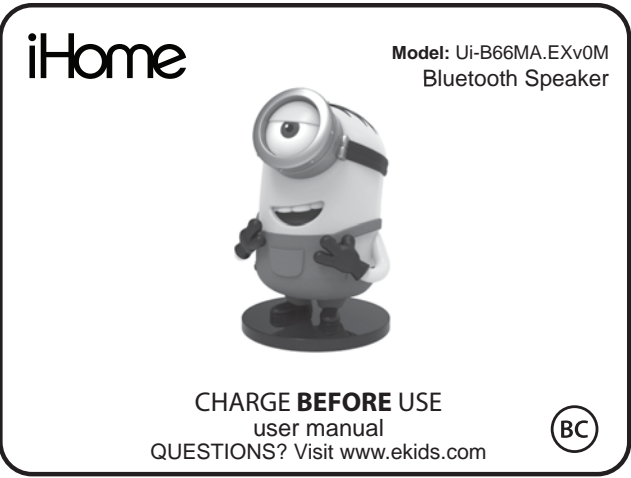
This warranty is valid only in the United States of America and does not extend to owners of the product other than to the original purchaser. In no event will eKids or any of its affiliates, contractors, resellers, their officers, directors, shareholders, members or agents be liable to you or any third party for any consequential or incidental damages, any lost profits, actual, exemplary or punitive damages. (Some states do not allow limitations on implied warranties or exclusion of consequential damages, so these restrictions may not apply to you.) This warranty gives you specific legal rights, and you may also have other rights which vary from state to state.

Your acknowledgement and agreement to fully and completely abide by the above mentioned disclaimer of warranty is contractually binding to you upon your transfer of currency (money order, cashier's check, or credit card) for purchase of your eKids product.

Questions? Visit [www.ekids.com](http://www.ekids.com)  
©2020 SDI Technologies, Inc. All Rights Reserved.  
iHome is a registered trademark of SDI Technologies Inc.,  
used under license.

UiB66.MA191209A

Printed in China



### FCC Information

#### FCC Radiation Exposure Statement

This equipment complies with FCC RF radiation exposure limits set forth for an uncontrolled environment.

This device complies with Part 15 of the FCC Rules, operation is subject to the following two conditions: (1) This device may not cause harmful interference, and (2) this device must accept any interference received, including interference that may cause undesired operation.

- Warning: Changes or modifications to this unit not expressly approved by the party responsible for compliance could void the user's authority to operate the equipment.
- NOTE: This equipment has been tested and found to comply with the limits for a Class B digital device, pursuant to Part 15 of the FCC Rules.

These limits are designed to provide reasonable protection against harmful interference in a residential installation. This equipment generates, uses and can radiate radio frequency energy and, if not installed and used in accordance with the instructions, may cause harmful interference to radio communications.

However, there is no guarantee that interference will not occur in a particular installation. If this equipment does cause harmful interference to radio or television reception, which can be determined by turning the equipment off and on, the user is encouraged to try to correct the interference by one or more of the following measures:

- Reorient or relocate the receiving antenna.
- Increase the separation between the equipment and receiver.
- Connect the equipment into an outlet on a circuit different from that to which the receiver is connected.
- Consult the dealer or an experienced radio/TV technician for help.

#### CAN ICES-3 (B)/NMB-3(B)

#### Canada Statement

This device contains licence-exempt transmitter(s)/receiver(s) that comply with Innovation, Science and Economic Development Canada's licence-exempt RSS(s). Operation is subject to the following two conditions:

- (1) This device may not cause interference.
- (2) This device must accept any interference, including interference that may cause undesired operation of the device.

The device has been evaluated to meet general RF exposure requirement.  
The device can be used in portable exposure condition without restriction.

L'émetteur/récepteur exempt de licence contenu dans le présent appareil est conforme aux CNR d'Innovation, Sciences et Développement économique Canada applicables aux appareils radio exempts de licence. L'exploitation est autorisée aux deux conditions suivantes :

- (1) L'appareil ne doit pas produire de brouillage;
- (2) L'appareil doit accepter tout brouillage radioélectrique subi, même si le brouillage est susceptible d'en compromettre le fonctionnement.

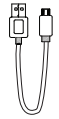
Le dispositif a été évalué à satisfaire l'exigence générale de l'exposition aux rf.

L'appareil peut être utilisé dans des conditions d'exposition portatif sans restriction.

### What's Included:



B66 Speaker

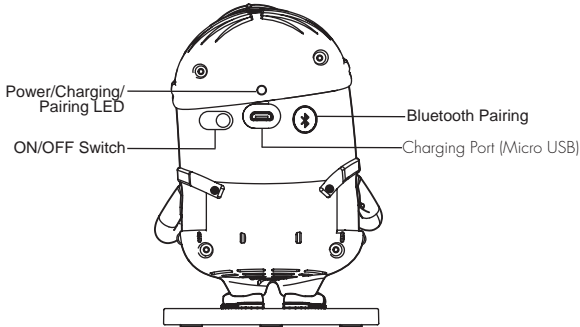


USB charging cable

### Maintenance:

- Place unit on a level surface away from sources of direct sunlight or excessive heat.
- Protect your furniture when placing your unit on natural wood and lacquered finish. A cloth or other protective material should be placed between it and the furniture.
- Clean your unit with a soft cloth moistened only with mild soap and water. Stronger cleaning agents can damage the surface of the unit.

### Controls



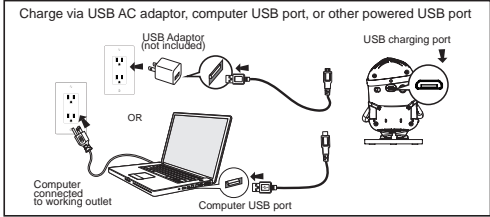
Back

When not in use, slide Power Switch to the OFF position to save battery power.

### Charging the Unit

#### CHARGE UNIT BEFORE USE

- Connect the micro USB plug to the micro USB charging port on the back of the unit.



NOTE: When the unit is on and not connected to a power source, the Power/Charging/Pairing Indicator Light flashing red means the battery needs charging.

- Connect the standard USB plug end of the cable to a power USB port on a computer or other USB charging device. For first time use, charge unit for about 5 hours.
- The Power/Charging/Pairing Indicator Light on the bottom of the unit glows red steadily while the unit is charging and turns OFF once the unit is fully charged. If unit is not powered on when micro USB plug is connected, the red light glows steadily to indicate unit is charging.

### Pairing Your Device

Pairing is the set-up process to introduce your Bluetooth-capable device to the B66. Once your device is paired, the B66 can recognize it and you can play your audio through it.

- Make sure your Bluetooth device is fully charged. Turn on your Bluetooth device and make it "discoverable" by turning on Bluetooth mode (check in Options or Settings).
- Slide the Power ON/OFF Switch to ON to turn on the B66. The first time the unit is powered on, it will enter auto-pairing mode and attempt to connect to a Bluetooth device (if so, skip to step 4). Otherwise, follow step 3 to begin pairing.
- Press and hold the Bluetooth Pairing button for 3 seconds. The B66 will beep and the Bluetooth status indicator light on top of the unit will flash quickly.

"iHome B66" should appear in your device's Bluetooth menu. If "Not Paired", "Not Connected" or similar message appears, select "iHome B66" to connect it. If prompted for a passcode, enter "1234" on your device's keypad.

- If pairing is successful, a tone will sound and the blue LED will glow solid, indicating the B66 is ready to play music. There should also be an indication on your device. If no device is successfully paired within 3 minutes the B66 will default to previous mode. Once the B66 is paired to a device, it will attempt to autolink when the device is within range (about 30 feet).

### Pairing with a Different Device

When the speaker is ON, it will automatically link with the previously paired Bluetooth device as long as that device is still within range (approx. 30 feet). So to pair with a different device you must press and hold the Bluetooth Pairing Button for 3 seconds to re-enter pairing mode.

### Playing Audio Via Bluetooth

- Move the ON/OFF Switch to the ON position to listen to audio streamed wirelessly from your paired iPad, iPhone, iPod or other Bluetooth device. The Power/Charging/Pairing Indicator Light on the unit will flash blue and a tone will sound as the unit searches for a previously paired device, and then turn solid blue once a previously paired device is detected.
- Use the controls on your Bluetooth device to play or pause audio, navigate tracks and control volume.
- When done listening, move the ON/OFF Switch to the OFF position to conserve the battery.

### Troubleshooting

#### Unit doesn't respond (no power):

- Make sure unit is completely charged.
- Check that all connections are correct and properly plugged in.
- Make sure your device is properly paired with the B66.
- Make sure the ON/OFF Switch is not in the OFF position.
- The rechargeable battery in your speaker can be replaced only by eKids Consumer Repair Department.

#### Unit doesn't respond (locked up/ "frozen")

If the unit does not respond, try resetting it. Press and hold the Bluetooth Pairing button for 9 seconds. Note that doing so will clear settings, and any Bluetooth devices will need to be re-paired.

#### Trouble pairing device with B66

Bluetooth implementation varies depending on your device's hardware and operating system. Please see our website for updates on pairing.

- When you power ON the speaker, it will automatically link with the last previously paired Bluetooth device if the device is still within range (approx. 30 feet). To pair with a different device you must turn off Bluetooth capability on the already paired device, or take it out of range.
- If your device does not auto-link when within range, re-pair the device. To do so, first delete the B66 from your Bluetooth devices menu.

For further information and to see the latest instructions, visit [www.ekids.com](http://www.ekids.com)